

Figure 13. Observed (obs, +), calculated (calc, solid) and difference (obs-calc, lower curve) synchrotron powder diffraction pattern ($\lambda = 0.4093 \text{ \AA}$) of β' -2 LaOLa after Rietveld refinement with GSAS.

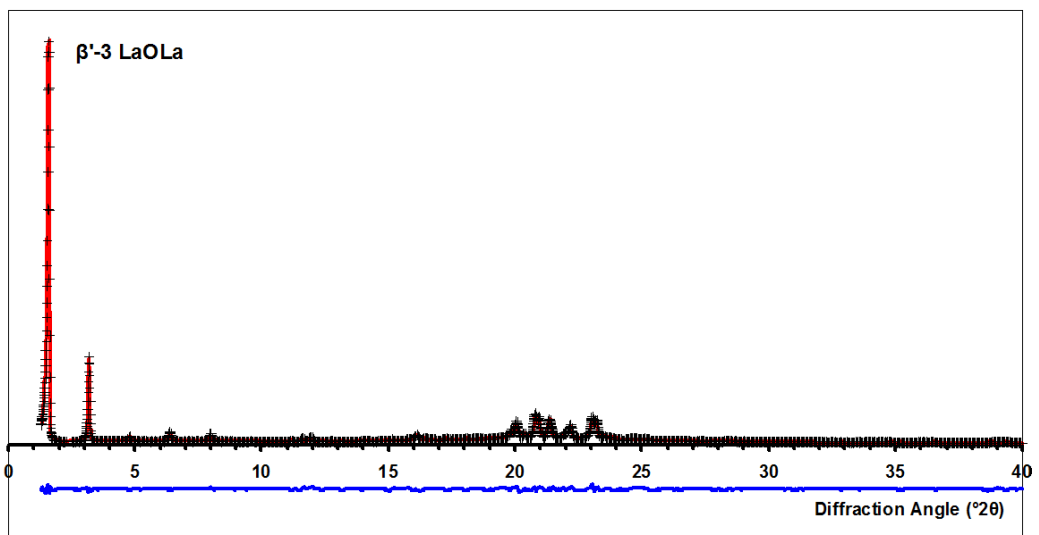


Figure 14. Observed (obs, +), calculated (calc, solid) and difference (obs-calc, lower curve) laboratory high resolution powder diffraction pattern ($\lambda = 1.5418 \text{ \AA}$) of β' -3 LaOLa after Rietveld refinement with GSAS.

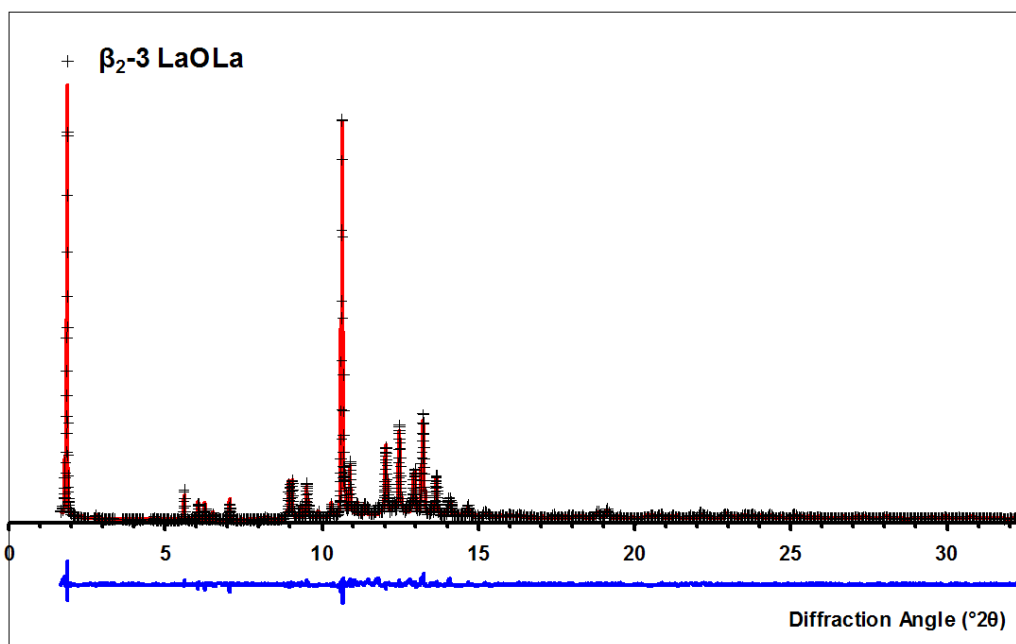


Figure 15. Observed (obs, +), calculated (calc, solid) and difference (obs-calc, lower curve) synchrotron powder diffraction pattern ($\lambda = 0.85005 \text{ \AA}$) of β_2 -3 LaOLa after Rietveld refinement with GSAS.