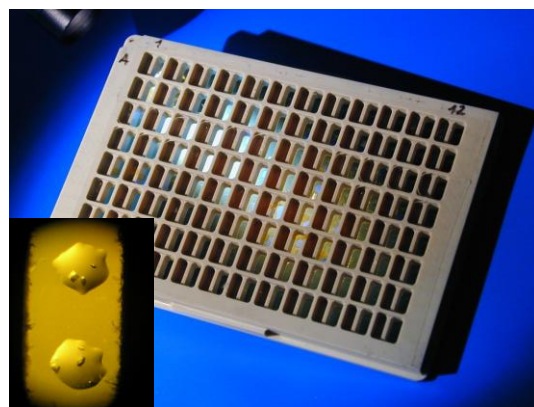
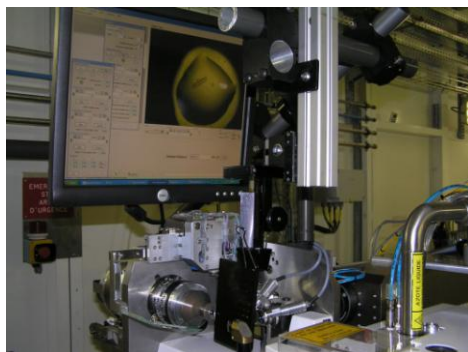


Other uses of Crystal Direct Plates

Crystal Direct Plates

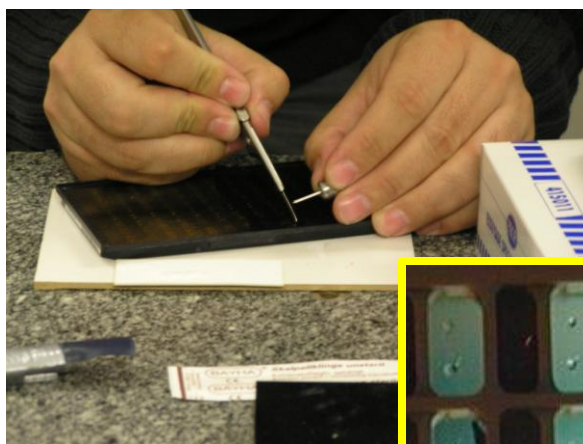
Direct in-Plate diffraction

- minimal background



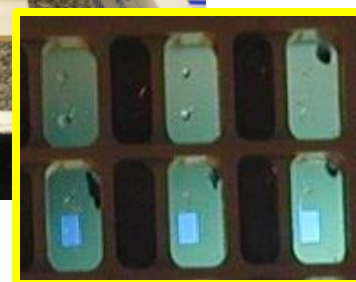
Manual harvesting

- With or Without loop fishing



Automated harvesting

- Photo Ablation with a Laser



Supplementary Figure 1 : Although the CD plates have been designed to enable automation of crystal harvesting they may also be used for standard manual mounting. For this purpose a section of the film containing the crystallization drop can be excised with a scalpel and placed under a microscope where crystals can be mounted in standard loops. This eliminates the inconvenient access angle associated with some 96-well crystallization plates. Alternatively, the excised film can be glued directly to a CD pin and used directly for x-ray diffractions experiments. CD plates are also ideal for in plate x-ray diffraction experiments, as the background x-ray scattering associated to the support is strongly reduced compared to standard crystallization plates.