

Acta Crystallographica Section E

Structure Reports

Online

ISSN 1600-5368

4,4'-Bis(prop-2-ynoxy)biphenyl

 Wu Zhang,^a Li Yao^b and Ruo-Jie Tao^{a*}

^aInstitute of Molecular and Crystal Engineering, College of Chemistry and Chemical Engineering, Henan University, Kaifeng 475001, Henan, People's Republic of China, and ^bSchool of Computer and Information Engineering, Henan University, Kaifeng 475001, Henan, People's Republic of China

Correspondence e-mail: rjtao@henu.edu.cn

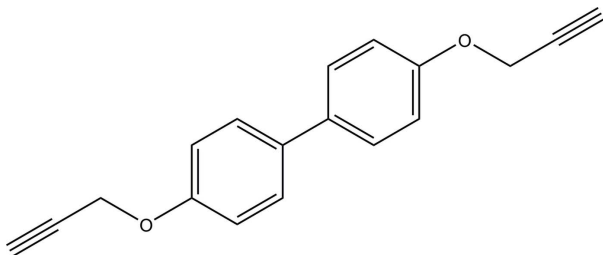
Received 21 November 2007; accepted 10 December 2007

Key indicators: single-crystal X-ray study; $T = 293$ K; mean $\sigma(\text{C}-\text{C}) = 0.002$ Å; R factor = 0.051; wR factor = 0.116; data-to-parameter ratio = 15.3.

The title compound, $\text{C}_{18}\text{H}_{14}\text{O}_2$, crystallizes with one half-molecule in the asymmetric unit. The molecule lies on an inversion center, located at the mid-point of the central C—C bond. As a result, the benzene rings are coplanar. No classical hydrogen bonds or stacking interactions are observed in the crystal structure.

Related literature

The title molecule was obtained unintentionally during an attempt at the synthesis of a Co^{II} complex, carried out following a published work (Burchell *et al.*, 2006).



Experimental

Crystal data

$\text{C}_{18}\text{H}_{14}\text{O}_2$	$V = 1424.3 (5) \text{ \AA}^3$
$M_r = 262.29$	$Z = 4$
Orthorhombic, <i>Pbca</i>	Mo $K\alpha$ radiation
$a = 7.5881 (16) \text{ \AA}$	$\mu = 0.08 \text{ mm}^{-1}$
$b = 8.2061 (18) \text{ \AA}$	$T = 293 (2) \text{ K}$
$c = 22.873 (5) \text{ \AA}$	$0.20 \times 0.17 \times 0.15 \text{ mm}$

Data collection

Bruker APEXII CCD area-detector diffractometer	1392 independent reflections
Absorption correction: none	1037 reflections with $I > 2\sigma(I)$
7569 measured reflections	$R_{\text{int}} = 0.040$

Refinement

$R[F^2 > 2\sigma(F^2)] = 0.051$	91 parameters
$wR(F^2) = 0.116$	H-atom parameters constrained
$S = 1.08$	$\Delta\rho_{\text{max}} = 0.16 \text{ e \AA}^{-3}$
1392 reflections	$\Delta\rho_{\text{min}} = -0.14 \text{ e \AA}^{-3}$

Data collection: *APEX2* (Bruker, 2005); cell refinement: *APEX2*; data reduction: *APEX2*; program(s) used to solve structure: *SHELXS97* (Sheldrick, 1997); program(s) used to refine structure: *SHELXL97* (Sheldrick, 1997); molecular graphics: *SHELXTL* (Bruker, 2005) and *DIAMOND* (Brandenburg, 1998); software used to prepare material for publication: *SHELXL97*.

The authors are grateful for financial support provided by the Henan Administration of Science and Technology (grant No. 0111030700).

Supplementary data and figures for this paper are available from the IUCr electronic archives (Reference: BH2156).

References

- Brandenburg, K. (1998). *DIAMOND*. Version 2.0. University of Bonn, Germany.
- Bruker (2005). *APEX2* (Version 1.27) and *SHELXTL* (Version 6.12). Bruker AXS Inc., Madison, Wisconsin, USA.
- Burchell, T. J., Jennings, M. C. & Puddephatt, R. J. (2006). *Inorg. Chim. Acta*, **359**, 2812–2818.
- Sheldrick, G. M. (1997). *SHELXS97* and *SHELXL97*. University of Göttingen, Germany.

supporting information

Acta Cryst. (2008). E64, o307 [https://doi.org/10.1107/S160053680706638X]

4,4'-Bis(prop-2-ynyloxy)biphenyl

Wu Zhang, Li Yao and Ruo-Jie Tao

S1. Comment

The title compound has been X-ray characterized (Fig. 1). The molecule lies on an inversion center, placed at the midpoint of the central C—C bond. As a result, all non-H atoms are almost coplanar, with a mean deviation from the least-squares plane of 0.0318 (13) Å. The bond lengths and angles show normal values. The crystal structure is characterized by zigzag chains (Fig. 2 and 3) formed along [100].

S2. Experimental

The title compound was obtained unintentionally as the product of an attempted synthesis of a network complex (Burchell *et al.*, 2006) based on Co^{II} and 4,4'-bis(prop-2-ynyloxy)biphenyl, by evaporation of a methyl alcohol and acetone solution of CoCl₂, NaN₃ and the title molecule, at 298 K.

S3. Refinement

All H atoms were included in calculated positions, with C—H distances fixed to 0.93 (aromatic CH) or 0.97 Å (methylene CH₂) and were refined in the riding-model approximation, with $U_{\text{iso}}(\text{H}) = 1.2U_{\text{eq}}(\text{carrier C})$.

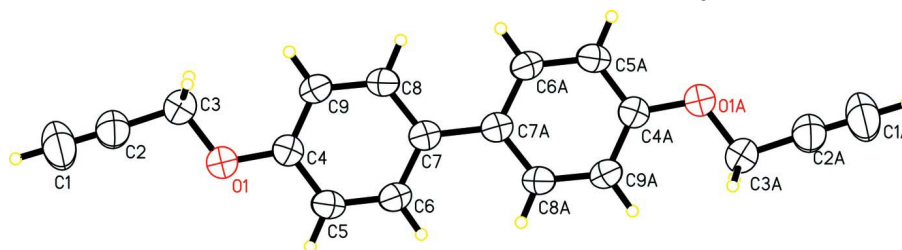


Figure 1

The molecular structure of the title molecule, showing the atom-labeling scheme. Displacement ellipsoids are drawn at the 50% probability level. 'A' labeled atoms are generated by symmetry code $-x, -y, -z$.

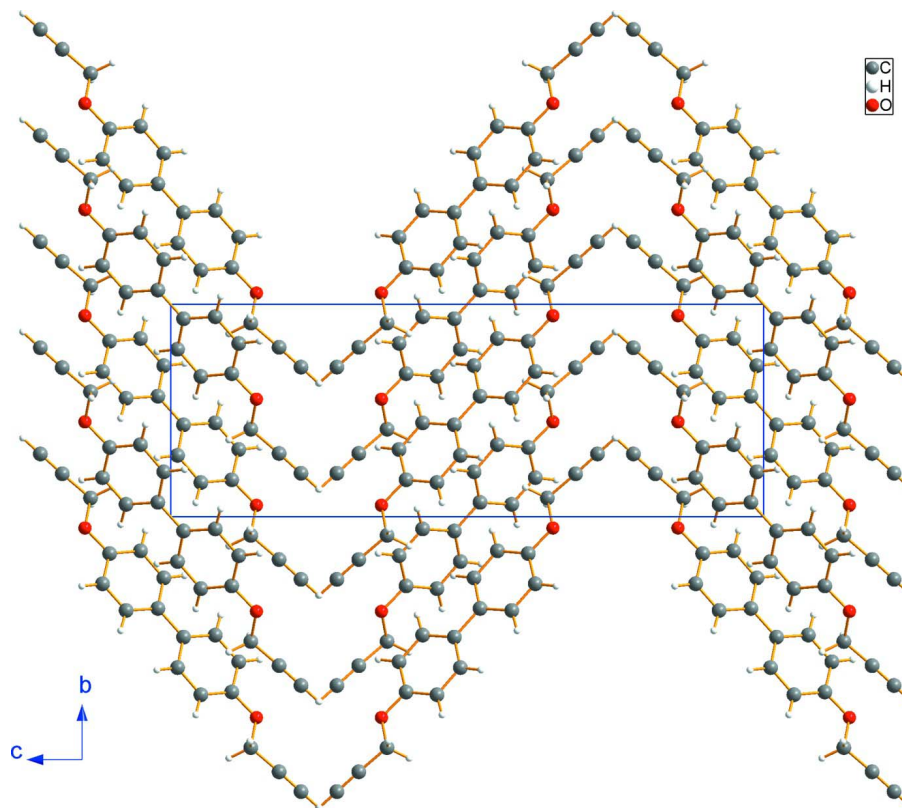


Figure 2

The molecular packing of the title compound, viewed along the a axis.

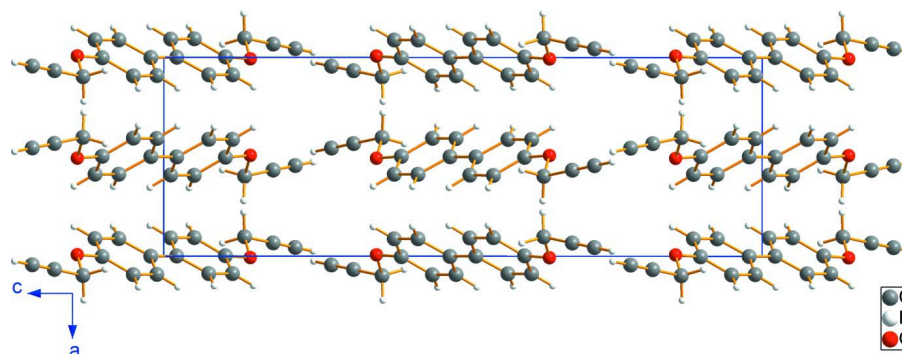


Figure 3

The molecular packing of the title compound, viewed along the b axis.

4,4'-Bis(prop-2-ynyloxy)biphenyl

Crystal data

$C_{18}H_{14}O_2$

$M_r = 262.29$

Orthorhombic, $Pbca$

Hall symbol: $-P\ 2ac\ 2ab$

$a = 7.5881(16)\ \text{\AA}$

$b = 8.2061(18)\ \text{\AA}$

$c = 22.873(5)\ \text{\AA}$

$V = 1424.3(5)\ \text{\AA}^3$

$Z = 4$

$F(000) = 552$

$D_x = 1.223\ \text{Mg m}^{-3}$

Mo $K\alpha$ radiation, $\lambda = 0.71073\ \text{\AA}$

Cell parameters from 1896 reflections

$\theta = 5.4\text{--}55.8^\circ$

$\mu = 0.08 \text{ mm}^{-1}$
 $T = 293 \text{ K}$

Block, colourless
 $0.20 \times 0.17 \times 0.15 \text{ mm}$

Data collection

Bruker APEXII CCD area-detector
 diffractometer
 Radiation source: fine-focus sealed tube
 Graphite monochromator
 φ and ω scans
 7569 measured reflections
 1392 independent reflections

1037 reflections with $I > 2\sigma(I)$
 $R_{\text{int}} = 0.040$
 $\theta_{\text{max}} = 26.0^\circ$, $\theta_{\text{min}} = 3.2^\circ$
 $h = -9 \rightarrow 8$
 $k = -9 \rightarrow 10$
 $l = -28 \rightarrow 26$

Refinement

Refinement on F^2
 Least-squares matrix: full
 $R[F^2 > 2\sigma(F^2)] = 0.051$
 $wR(F^2) = 0.116$
 $S = 1.08$
 1392 reflections
 91 parameters
 0 restraints
 0 constraints
 Primary atom site location: structure-invariant
 direct methods

Secondary atom site location: difference Fourier
 map
 Hydrogen site location: inferred from
 neighbouring sites
 H-atom parameters constrained
 $w = 1/[\sigma^2(F_o^2) + (0.0448P)^2 + 0.3393P]$
 where $P = (F_o^2 + 2F_c^2)/3$
 $(\Delta/\sigma)_{\text{max}} < 0.001$
 $\Delta\rho_{\text{max}} = 0.16 \text{ e } \text{\AA}^{-3}$
 $\Delta\rho_{\text{min}} = -0.14 \text{ e } \text{\AA}^{-3}$

Fractional atomic coordinates and isotropic or equivalent isotropic displacement parameters (\AA^2)

	<i>x</i>	<i>y</i>	<i>z</i>	$U_{\text{iso}}^*/U_{\text{eq}}$
C1	0.0440 (4)	0.7955 (3)	0.21976 (10)	0.0956 (9)
H1	0.0256	0.8708	0.2495	0.115*
C2	0.0669 (3)	0.7021 (2)	0.18279 (8)	0.0636 (5)
C3	0.0975 (3)	0.5881 (2)	0.13510 (8)	0.0587 (5)
H3A	0.0660	0.6382	0.0981	0.070*
H3B	0.2212	0.5586	0.1336	0.070*
C4	0.0023 (2)	0.32626 (19)	0.10298 (7)	0.0408 (4)
C5	-0.0877 (2)	0.1838 (2)	0.11486 (7)	0.0474 (4)
H5A	-0.1484	0.1728	0.1500	0.057*
C6	-0.0879 (2)	0.0580 (2)	0.07515 (7)	0.0465 (4)
H6A	-0.1493	-0.0369	0.0842	0.056*
C7	0.0007 (2)	0.06755 (18)	0.02165 (6)	0.0381 (4)
C8	0.0918 (2)	0.2113 (2)	0.01155 (7)	0.0483 (5)
H8A	0.1545	0.2222	-0.0232	0.058*
C9	0.0934 (2)	0.3391 (2)	0.05092 (7)	0.0493 (5)
H9A	0.1558	0.4337	0.0424	0.059*
O1	-0.00711 (15)	0.44653 (14)	0.14459 (5)	0.0507 (4)

Atomic displacement parameters (\AA^2)

	U^{11}	U^{22}	U^{33}	U^{12}	U^{13}	U^{23}
C1	0.139 (3)	0.0774 (17)	0.0706 (14)	-0.0022 (17)	0.0079 (14)	-0.0255 (13)
C2	0.0802 (14)	0.0552 (12)	0.0554 (11)	-0.0051 (11)	0.0010 (10)	-0.0046 (10)

C3	0.0691 (13)	0.0485 (11)	0.0586 (11)	-0.0098 (10)	0.0079 (10)	-0.0049 (9)
C4	0.0390 (9)	0.0414 (9)	0.0421 (8)	0.0028 (8)	-0.0008 (7)	0.0011 (7)
C5	0.0483 (10)	0.0518 (11)	0.0421 (9)	-0.0054 (8)	0.0082 (8)	0.0036 (8)
C6	0.0485 (10)	0.0439 (10)	0.0470 (9)	-0.0094 (8)	0.0049 (8)	0.0042 (8)
C7	0.0323 (8)	0.0388 (9)	0.0431 (8)	0.0033 (7)	-0.0009 (7)	0.0052 (7)
C8	0.0523 (10)	0.0459 (10)	0.0468 (9)	-0.0057 (8)	0.0132 (8)	0.0021 (8)
C9	0.0541 (11)	0.0407 (10)	0.0531 (10)	-0.0093 (8)	0.0111 (8)	0.0018 (8)
O1	0.0577 (8)	0.0463 (7)	0.0480 (6)	-0.0062 (6)	0.0081 (6)	-0.0044 (6)

Geometric parameters (Å, °)

C1—C2	1.155 (3)	C5—C6	1.375 (2)
C1—H1	0.9300	C5—H5A	0.9300
C2—C3	1.456 (3)	C6—C7	1.399 (2)
C3—O1	1.424 (2)	C6—H6A	0.9300
C3—H3A	0.9700	C7—C8	1.386 (2)
C3—H3B	0.9700	C7—C7 ⁱ	1.487 (3)
C4—O1	1.3729 (19)	C8—C9	1.382 (2)
C4—C5	1.381 (2)	C8—H8A	0.9300
C4—C9	1.381 (2)	C9—H9A	0.9300
C2—C1—H1	180.0	C5—C6—C7	122.35 (15)
C1—C2—C3	178.3 (2)	C5—C6—H6A	118.8
O1—C3—C2	108.71 (15)	C7—C6—H6A	118.8
O1—C3—H3A	109.9	C8—C7—C6	115.68 (14)
C2—C3—H3A	109.9	C8—C7—C7 ⁱ	121.82 (17)
O1—C3—H3B	109.9	C6—C7—C7 ⁱ	122.50 (17)
C2—C3—H3B	109.9	C9—C8—C7	122.78 (15)
H3A—C3—H3B	108.3	C9—C8—H8A	118.6
O1—C4—C5	116.53 (14)	C7—C8—H8A	118.6
O1—C4—C9	124.67 (15)	C4—C9—C8	119.95 (15)
C5—C4—C9	118.80 (15)	C4—C9—H9A	120.0
C6—C5—C4	120.43 (15)	C8—C9—H9A	120.0
C6—C5—H5A	119.8	C4—O1—C3	116.87 (12)
C4—C5—H5A	119.8		
O1—C4—C5—C6	178.87 (15)	O1—C4—C9—C8	-178.91 (16)
C9—C4—C5—C6	-0.8 (2)	C5—C4—C9—C8	0.7 (3)
C4—C5—C6—C7	-0.1 (3)	C7—C8—C9—C4	0.3 (3)
C5—C6—C7—C8	1.1 (2)	C5—C4—O1—C3	174.67 (16)
C5—C6—C7—C7 ⁱ	-179.38 (18)	C9—C4—O1—C3	-5.7 (2)
C6—C7—C8—C9	-1.2 (2)	C2—C3—O1—C4	178.71 (15)
C7 ⁱ —C7—C8—C9	179.30 (18)		

Symmetry code: (i) $-x, -y, -z$.