

Acta Crystallographica Section E

Structure Reports

Online

ISSN 1600-5368

Bis[2-(pyrimidin-2-ylamino)pyrimidinium] hexamolybdate

Chun-Wei Yeh, Chia-Her Lin* and Jhy-Der Chen

 Department of Chemistry, Chung-Yuan Christian University, Chung-Li 320, Taiwan
 Correspondence e-mail: jdchen@cycu.edu.tw

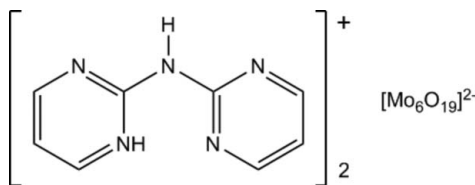
Received 24 October 2007; accepted 24 November 2007

 Key indicators: single-crystal X-ray study; $T = 295$ K; mean $\sigma(\text{C}-\text{C}) = 0.018$ Å;
 R factor = 0.057; wR factor = 0.146; data-to-parameter ratio = 11.5.

The title compound, $(\text{C}_8\text{H}_8\text{N}_5)_2[\text{Mo}_6\text{O}_{19}]$, was prepared by reaction of $\text{Mo}(\text{CO})_6$ and dipyrimidylamine in refluxing toluene. The hexanuclear polyoxomolybdate anions lie on centres of inversion. Each 2-(pyrimidin-2-ylamino)pyrimidinium cation forms an intramolecular $\text{N}-\text{H}\cdots\text{N}$ hydrogen bond and the cations are linked through self-complementary pairs of $\text{N}-\text{H}\cdots\text{N}$ hydrogen bonds into dimers across centres of inversion. The cations and anions are interlinked through $\text{C}-\text{H}\cdots\text{O}$ contacts.

Related literature

For related literature, see: Shivaiah (2006); Bridgeman & Cavigliasso (2002); Shi *et al.* (2006); Wang *et al.* (2004); Guo *et al.* (2004); Burkholder & Zubieta (2004); Hagrman *et al.* (1999).



Experimental

Crystal data

$(\text{C}_8\text{H}_8\text{N}_5)_2[\text{Mo}_6\text{O}_{19}]$
 $M_r = 1228.03$
 Monoclinic, $P2_1/n$
 $a = 10.4338$ (19) Å
 $b = 13.7437$ (19) Å
 $c = 11.0792$ (17) Å
 $\beta = 105.471$ (13)°

$V = 1531.2$ (4) Å³
 $Z = 2$
 Mo $K\alpha$ radiation
 $\mu = 2.48$ mm⁻¹
 $T = 295$ (2) K
 $0.40 \times 0.20 \times 0.05$ mm

Data collection

 Bruker *P4* diffractometer

Absorption correction: ψ scan
 (North *et al.*, 1968)
 $T_{\min} = 0.578$, $T_{\max} = 0.883$

3399 measured reflections
 2660 independent reflections
 1833 reflections with $I > 2\sigma(I)$
 $R_{\text{int}} = 0.082$

3 standard reflections
 every 97 reflections
 intensity decay: none

Refinement

$R[F^2 > 2\sigma(F^2)] = 0.057$
 $wR(F^2) = 0.146$
 $S = 1.02$
 2660 reflections

232 parameters
 H-atom parameters constrained
 $\Delta\rho_{\text{max}} = 0.91$ e Å⁻³
 $\Delta\rho_{\text{min}} = -1.78$ e Å⁻³

Table 1

Hydrogen-bond geometry (Å, °).

| $D-\text{H}\cdots A$ | $D-\text{H}$ | $\text{H}\cdots A$ | $D\cdots A$ | $D-\text{H}\cdots A$ |
|---|--------------|--------------------|-------------|----------------------|
| $\text{N3}-\text{H3N}\cdots\text{N4}$ | 0.86 | 1.95 | 2.605 (12) | 132 |
| $\text{N1}-\text{H1N}\cdots\text{N5}^{\text{i}}$ | 0.86 | 2.07 | 2.924 (13) | 180 |
| $\text{C2}-\text{H2}\cdots\text{O8}^{\text{ii}}$ | 0.93 | 2.65 | 3.444 (14) | 144 |
| $\text{C4}-\text{H4}\cdots\text{O2}^{\text{iii}}$ | 0.93 | 2.69 | 3.391 (14) | 133 |
| $\text{C6}-\text{H6}\cdots\text{O6}^{\text{iv}}$ | 0.93 | 2.38 | 3.250 (15) | 157 |
| $\text{C7}-\text{H7}\cdots\text{O1}^{\text{v}}$ | 0.93 | 2.51 | 3.196 (14) | 131 |

Symmetry codes: (i) $-x+1, -y+2, -z+1$; (ii) $-x+\frac{1}{2}, y+\frac{1}{2}, -z+\frac{1}{2}$; (iii) $x+\frac{1}{2}, -y+\frac{3}{2}, z-\frac{1}{2}$; (iv) $-x+\frac{1}{2}, y-\frac{1}{2}, -z+\frac{1}{2}$; (v) $x+\frac{1}{2}, -y+\frac{3}{2}, z+\frac{1}{2}$.

Data collection: *XSCANS* (Siemens, 1996); cell refinement: *XSCANS*; data reduction: *XSCANS* program(s) used to solve structure: *SHELXS97* (Sheldrick, 1997); program(s) used to refine structure: *SHELXL97* (Sheldrick, 1997); molecular graphics: *SHELXTL* (Bruker, 1997); software used to prepare material for publication: *SHELXTL*.

We are grateful to the National Science Council of the Republic of China for support. This research was also supported by the project of the specific research fields in Chung Yuan Christian University, Taiwan, under grant CYCU-95-CR-CH.

Supplementary data and figures for this paper are available from the IUCr electronic archives (Reference: B12259).

References

- Bridgeman, A. J. & Cavigliasso, G. (2002). *Inorg. Chem.* **41**, 1761–1770.
 Bruker (1997). *SHELXTL*. Version 5.10. Bruker AXS Inc., Madison, Wisconsin, USA.
 Burkholder, E. & Zubieta, J. (2004). *Inorg. Chim. Acta*, **357**, 279–284.
 Guo, Y., Wang, X., Li, Y., Wang, E., Xu, L. & Hu, C. (2004). *J. Coord. Chem.* **57**, 445–451.
 Hagrman, P. J., Hagrman, D. & Zubieta, Z. (1999). *Angew. Chem. Int. Ed. Engl.* **38**, 2638–2684.
 North, A. C. T., Phillips, D. C. & Mathews, F. S. (1968). *Acta Cryst.* **A24**, 351–359.
 Sheldrick, G. M. (1997). *SHELXL97* and *SHELXS97*. University of Göttingen, Germany.
 Shi, Y., Yang, W., Xue, G., Hu, H. & Wang, J. (2006). *J. Mol. Struct.* **784**, 244–248.
 Shivaiah, V. (2006). *Inorg. Chem. Commun.* **9**, 1191–1194.
 Siemens (1996). *XSCANS*. Siemens Analytical X-ray Instruments Inc., Madison, Wisconsin, USA.
 Wang, X., Guo, Y., Wang, E., Duan, L., Xu, X. & Hu, C. (2004). *J. Mol. Struct.* **691**, 171–180.

supplementary materials

Acta Cryst. (2008). E64, m41 [doi:10.1107/S1600536807062897]

Bis[2-(pyrimidin-2-ylamino)pyrimidinium] hexamolybdate

C.-W. Yeh, C.-H. Lin and J.-D. Chen

Comment

Polyoxomolybdates are an important class of metal-oxygen cluster compounds (Shivaiah, 2006; Bridgeman & Cavigliasso, 2002) which show interesting chemical and physical properties (Shi, *et al.*, 2006; Wang, *et al.*, 2004; Guo, *et al.*, 2004; Burkholder & Zubieta, 2004; Hagrman, *et al.*, 1999). Since the anions contain many oxygen atoms which are good hydrogen-bond acceptors, cocrystallization with organic cations should result in interesting supramolecular chemistry. In the title complex (Fig. 1), the protonated dipyrimidylamine molecules (Hdipm) are linked into dimers by N—H \cdots N hydrogen bonds. The cations and anions are interlinked through C—H \cdots O contacts (Fig. 2).

Experimental

Mo(CO)₆ (0.52 g, 2.00 mmol) was added to a solution of dipyrimidylamine (dipm) (0.34 g, 2.00 mmol) in 20 ml toluene. The mixture was refluxed for 18 h to yield an orange solution. The solvent was reduced and *n*-hexanes added to induce precipitation. The precipitate was filtered and washed by ether (3 × 10 ml) and then dried under reduced pressure to give an orange powder. The green plate crystals were obtained by slow diffusion of ether into a CH₂Cl₂ solution of the orange powder. The crystals were filtered and washed by ether (3 × 10 ml) and then dried under reduced pressure. Overall crystal yield: 0.207 g (8.43%, based on Mo). Elemental analysis calculated: C, 15.16%; H, 1.31%; N, 11.41%; found: C, 15.02%; H, 1.34%; N, 11.03%.

Refinement

H atoms were placed geometrically with C—H = 0.93 Å and N—H = 0.86 Å, and refined as riding with $U_{\text{iso}}(\text{H}) = U_{\text{eq}}(\text{C/N})$.

Figures

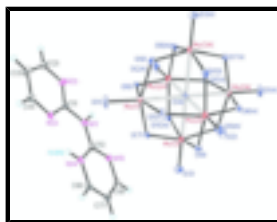


Fig. 1. The molecular structure of the title compound showing displacement ellipsoids at the 30% probability level for non-H atoms.

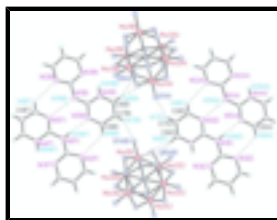


Fig. 2. Partial packing diagram showing N—H \cdots N hydrogen bonding between Hdipm molecules and C—H \cdots O contacts to the polyoxometalate.

Bis[2-(pyrimidin-2-ylamino)pyrimidinium] hexamolybdate

Crystal data

(C₈H₈N₅)₂[Mo₆O₁₉]

$M_r = 1228.03$

Monoclinic, $P2_1/n$

Hall symbol: -P 2yn

$a = 10.4338$ (19) Å

$b = 13.7437$ (19) Å

$c = 11.0792$ (17) Å

$\beta = 105.471$ (13)°

$V = 1531.2$ (4) Å³

$Z = 2$

$F_{000} = 1172$

$D_x = 2.664$ Mg m⁻³

Mo $K\alpha$ radiation

$\lambda = 0.71073$ Å

Cell parameters from 31 reflections

$\theta = 4.8$ – 12.5 °

$\mu = 2.48$ mm⁻¹

$T = 295$ (2) K

Plate, green

$0.40 \times 0.20 \times 0.05$ mm

Data collection

Bruker P4
diffractometer

Radiation source: fine-focus sealed tube

Monochromator: graphite

$T = 295$ (2) K

ω scans

Absorption correction: ψ scan
(North *et al.*, 1968)

$T_{\min} = 0.578$, $T_{\max} = 0.883$

3399 measured reflections

2660 independent reflections

1833 reflections with $I > 2\sigma(I)$

$R_{\text{int}} = 0.082$

$\theta_{\max} = 25.0$ °

$\theta_{\min} = 2.4$ °

$h = -1 \rightarrow 12$

$k = -1 \rightarrow 16$

$l = -13 \rightarrow 12$

3 standard reflections

every 97 reflections

intensity decay: none

Refinement

Refinement on F^2

Least-squares matrix: full

$R[F^2 > 2\sigma(F^2)] = 0.057$

$wR(F^2) = 0.146$

$S = 1.02$

2660 reflections

232 parameters

Primary atom site location: structure-invariant direct
methods

Secondary atom site location: difference Fourier map

Hydrogen site location: inferred from neighbouring
sites

H-atom parameters constrained

$$w = 1/[\sigma^2(F_o^2) + (0.0858P)^2]$$

where $P = (F_o^2 + 2F_c^2)/3$

$(\Delta/\sigma)_{\max} < 0.001$

$\Delta\rho_{\max} = 0.91$ e Å⁻³

$\Delta\rho_{\min} = -1.78$ e Å⁻³

Extinction correction: none

Special details

Geometry. All e.s.d.'s (except the e.s.d. in the dihedral angle between two l.s. planes) are estimated using the full covariance matrix. The cell e.s.d.'s are taken into account individually in the estimation of e.s.d.'s in distances, angles and torsion angles; correlations between e.s.d.'s in cell parameters are only used when they are defined by crystal symmetry. An approximate (isotropic) treatment of cell e.s.d.'s is used for estimating e.s.d.'s involving l.s. planes.

Refinement. Refinement of F^2 against ALL reflections. The weighted R -factor wR and goodness of fit S are based on F^2 , conventional R -factors R are based on F , with F set to zero for negative F^2 . The threshold expression of $F^2 > 2\sigma(F^2)$ is used only for calculating R -factors(gt) *etc.* and is not relevant to the choice of reflections for refinement. R -factors based on F^2 are statistically about twice as large as those based on F , and R -factors based on ALL data will be even larger.

Fractional atomic coordinates and isotropic or equivalent isotropic displacement parameters (\AA^2)

| | <i>x</i> | <i>y</i> | <i>z</i> | $U_{\text{iso}}^*/U_{\text{eq}}$ |
|-----|--------------|-------------|--------------|----------------------------------|
| Mo1 | 0.06601 (9) | 0.95848 (7) | 0.32376 (8) | 0.0380 (3) |
| Mo2 | -0.15184 (9) | 0.87281 (7) | 0.46013 (9) | 0.0418 (3) |
| Mo3 | 0.16049 (9) | 0.89727 (7) | 0.61876 (9) | 0.0434 (3) |
| N1 | 0.4384 (8) | 0.9695 (6) | 0.3239 (8) | 0.040 (2) |
| H1N | 0.4607 | 1.0166 | 0.3764 | 0.048* |
| N2 | 0.4053 (10) | 1.0908 (7) | 0.1792 (9) | 0.052 (2) |
| N3 | 0.3659 (9) | 0.9281 (7) | 0.1128 (8) | 0.043 (2) |
| H3N | 0.3676 | 0.8676 | 0.1331 | 0.052* |
| N4 | 0.4025 (9) | 0.8036 (6) | 0.2961 (9) | 0.046 (2) |
| N5 | 0.4845 (8) | 0.8709 (6) | 0.4968 (9) | 0.040 (2) |
| O1 | 0.1142 (7) | 0.9318 (7) | 0.1952 (7) | 0.065 (2) |
| O2 | -0.2622 (8) | 0.7811 (6) | 0.4336 (9) | 0.072 (3) |
| O3 | 0.2743 (9) | 0.8222 (7) | 0.7019 (9) | 0.076 (3) |
| O4 | 0.0000 | 1.0000 | 0.5000 | 0.0286 (19) |
| O5 | -0.0732 (7) | 0.8658 (5) | 0.3211 (7) | 0.052 (2) |
| O6 | 0.1775 (7) | 1.0683 (5) | 0.3902 (7) | 0.0414 (17) |
| O7 | 0.1797 (7) | 0.8825 (5) | 0.4514 (7) | 0.0446 (18) |
| O8 | 0.0033 (7) | 0.8138 (5) | 0.5623 (8) | 0.056 (2) |
| O9 | -0.0736 (7) | 1.0520 (6) | 0.2626 (6) | 0.052 (2) |
| O10 | -0.2525 (6) | 0.9816 (6) | 0.3719 (6) | 0.0465 (19) |
| C1 | 0.4034 (10) | 0.9955 (8) | 0.1993 (9) | 0.041 (3) |
| C2 | 0.3673 (12) | 1.1171 (10) | 0.0578 (12) | 0.060 (3) |
| H2 | 0.3699 | 1.1827 | 0.0376 | 0.072* |
| C3 | 0.3249 (13) | 1.0509 (11) | -0.0372 (12) | 0.064 (4) |
| H3 | 0.2968 | 1.0711 | -0.1202 | 0.077* |
| C4 | 0.3252 (12) | 0.9553 (10) | -0.0069 (11) | 0.055 (3) |
| H4 | 0.2971 | 0.9089 | -0.0694 | 0.066* |
| C5 | 0.4425 (9) | 0.8789 (7) | 0.3750 (10) | 0.037 (2) |
| C6 | 0.4060 (12) | 0.7135 (9) | 0.3495 (12) | 0.054 (3) |
| H6 | 0.3774 | 0.6596 | 0.2987 | 0.064* |
| C7 | 0.4491 (11) | 0.7019 (8) | 0.4714 (11) | 0.048 (3) |
| H7 | 0.4537 | 0.6402 | 0.5068 | 0.057* |
| C8 | 0.4876 (10) | 0.7831 (8) | 0.5462 (10) | 0.046 (3) |

supplementary materials

H8 0.5161 0.7758 0.6327 0.055*

Atomic displacement parameters (\AA^2)

| | U^{11} | U^{22} | U^{33} | U^{12} | U^{13} | U^{23} |
|-----|------------|------------|------------|-------------|------------|-------------|
| Mo1 | 0.0374 (5) | 0.0496 (6) | 0.0324 (5) | -0.0021 (4) | 0.0188 (4) | -0.0061 (4) |
| Mo2 | 0.0393 (5) | 0.0414 (5) | 0.0508 (6) | -0.0114 (4) | 0.0228 (4) | -0.0095 (4) |
| Mo3 | 0.0400 (5) | 0.0502 (6) | 0.0424 (6) | 0.0122 (4) | 0.0151 (4) | 0.0098 (5) |
| N1 | 0.043 (5) | 0.041 (5) | 0.035 (5) | -0.002 (4) | 0.009 (4) | -0.005 (4) |
| N2 | 0.059 (6) | 0.049 (6) | 0.048 (6) | -0.006 (5) | 0.016 (5) | 0.000 (5) |
| N3 | 0.053 (5) | 0.046 (5) | 0.034 (5) | 0.004 (4) | 0.016 (4) | -0.005 (4) |
| N4 | 0.047 (5) | 0.042 (5) | 0.051 (6) | 0.003 (4) | 0.018 (4) | -0.007 (5) |
| N5 | 0.036 (5) | 0.045 (5) | 0.038 (5) | 0.004 (4) | 0.009 (4) | 0.001 (4) |
| O1 | 0.046 (4) | 0.120 (7) | 0.036 (4) | -0.014 (5) | 0.023 (4) | -0.025 (5) |
| O2 | 0.069 (6) | 0.067 (6) | 0.100 (7) | -0.029 (5) | 0.054 (5) | -0.034 (5) |
| O3 | 0.067 (6) | 0.088 (7) | 0.075 (6) | 0.035 (5) | 0.026 (5) | 0.038 (5) |
| O4 | 0.024 (4) | 0.037 (5) | 0.029 (5) | -0.002 (4) | 0.014 (4) | -0.009 (4) |
| O5 | 0.047 (4) | 0.055 (5) | 0.061 (5) | -0.024 (4) | 0.029 (4) | -0.029 (4) |
| O6 | 0.040 (4) | 0.042 (4) | 0.049 (4) | 0.004 (3) | 0.025 (3) | 0.003 (3) |
| O7 | 0.042 (4) | 0.042 (4) | 0.058 (5) | 0.012 (3) | 0.028 (4) | 0.003 (4) |
| O8 | 0.062 (5) | 0.032 (4) | 0.085 (6) | 0.012 (4) | 0.037 (5) | 0.014 (4) |
| O9 | 0.042 (4) | 0.083 (6) | 0.034 (4) | 0.013 (4) | 0.017 (3) | 0.016 (4) |
| O10 | 0.028 (3) | 0.077 (5) | 0.035 (4) | -0.003 (4) | 0.009 (3) | -0.002 (4) |
| C1 | 0.046 (6) | 0.047 (7) | 0.034 (6) | -0.002 (5) | 0.018 (5) | 0.004 (5) |
| C2 | 0.063 (8) | 0.066 (8) | 0.053 (8) | 0.001 (7) | 0.021 (7) | 0.007 (7) |
| C3 | 0.067 (8) | 0.085 (10) | 0.039 (7) | -0.007 (7) | 0.011 (6) | 0.010 (7) |
| C4 | 0.055 (7) | 0.066 (8) | 0.046 (8) | 0.004 (6) | 0.017 (6) | -0.005 (6) |
| C5 | 0.025 (5) | 0.047 (6) | 0.038 (6) | -0.001 (4) | 0.008 (4) | -0.012 (5) |
| C6 | 0.061 (7) | 0.044 (7) | 0.060 (9) | 0.002 (6) | 0.023 (6) | -0.012 (6) |
| C7 | 0.058 (7) | 0.035 (6) | 0.048 (8) | 0.000 (5) | 0.011 (6) | -0.002 (5) |
| C8 | 0.051 (7) | 0.052 (7) | 0.041 (7) | 0.007 (5) | 0.023 (5) | 0.008 (6) |

Geometric parameters (\AA , $^\circ$)

| | | | |
|---------------------|------------|----------------------|------------|
| Mo1—O1 | 1.673 (7) | N3—C1 | 1.315 (13) |
| Mo1—O7 | 1.897 (7) | N3—C4 | 1.333 (14) |
| Mo1—O9 | 1.926 (7) | N3—H3N | 0.860 |
| Mo1—O5 | 1.926 (7) | N4—C5 | 1.347 (13) |
| Mo1—O6 | 1.927 (7) | N4—C6 | 1.369 (15) |
| Mo1—O4 | 2.3087 (9) | N5—C5 | 1.308 (13) |
| Mo2—O2 | 1.680 (8) | N5—C8 | 1.321 (13) |
| Mo2—O8 | 1.892 (8) | O4—Mo1 ⁱ | 2.3087 (9) |
| Mo2—O6 ⁱ | 1.927 (7) | O4—Mo3 ⁱ | 2.3137 (9) |
| Mo2—O5 | 1.931 (8) | O4—Mo2 ⁱ | 2.3210 (9) |
| Mo2—O10 | 1.935 (7) | O6—Mo2 ⁱ | 1.927 (7) |
| Mo2—O4 | 2.3210 (9) | O9—Mo3 ⁱ | 1.916 (7) |
| Mo3—O3 | 1.655 (8) | O10—Mo3 ⁱ | 1.911 (8) |

| | | | |
|---------------------------------------|------------|---------------------------------------|------------|
| Mo3—O10 ⁱ | 1.911 (8) | C2—C3 | 1.372 (18) |
| Mo3—O9 ⁱ | 1.916 (7) | C2—H2 | 0.930 |
| Mo3—O7 | 1.928 (8) | C3—C4 | 1.356 (19) |
| Mo3—O8 | 1.963 (8) | C3—H3 | 0.930 |
| Mo3—O4 | 2.3137 (9) | C4—H4 | 0.930 |
| N1—C5 | 1.364 (13) | C6—C7 | 1.314 (16) |
| N1—C1 | 1.378 (13) | C6—H6 | 0.930 |
| N1—H1N | 0.860 | C7—C8 | 1.384 (15) |
| N2—C1 | 1.329 (14) | C7—H7 | 0.930 |
| N2—C2 | 1.347 (15) | C8—H8 | 0.930 |
| O1—Mo1—O7 | 104.1 (4) | C1—N3—H3N | 120.6 |
| O1—Mo1—O9 | 102.6 (4) | C4—N3—H3N | 120.6 |
| O7—Mo1—O9 | 153.3 (3) | C5—N4—C6 | 116.5 (10) |
| O1—Mo1—O5 | 103.8 (4) | C5—N5—C8 | 117.9 (9) |
| O7—Mo1—O5 | 88.1 (3) | Mo1 ⁱ —O4—Mo1 | 180.0 |
| O9—Mo1—O5 | 86.5 (4) | Mo1 ⁱ —O4—Mo3 | 90.22 (4) |
| O1—Mo1—O6 | 102.0 (4) | Mo1—O4—Mo3 | 89.78 (4) |
| O7—Mo1—O6 | 87.3 (3) | Mo1 ⁱ —O4—Mo3 ⁱ | 89.78 (4) |
| O9—Mo1—O6 | 86.2 (3) | Mo1—O4—Mo3 ⁱ | 90.22 (4) |
| O5—Mo1—O6 | 154.1 (3) | Mo3—O4—Mo3 ⁱ | 180.0 |
| O1—Mo1—O4 | 178.3 (4) | Mo1 ⁱ —O4—Mo2 | 90.27 (3) |
| O7—Mo1—O4 | 76.9 (2) | Mo1—O4—Mo2 | 89.73 (3) |
| O9—Mo1—O4 | 76.4 (2) | Mo3—O4—Mo2 | 90.14 (4) |
| O5—Mo1—O4 | 77.4 (2) | Mo3 ⁱ —O4—Mo2 | 89.86 (4) |
| O6—Mo1—O4 | 76.7 (2) | Mo1 ⁱ —O4—Mo2 ⁱ | 89.73 (3) |
| O2—Mo2—O8 | 102.7 (4) | Mo1—O4—Mo2 ⁱ | 90.27 (3) |
| O2—Mo2—O6 ⁱ | 102.7 (4) | Mo3—O4—Mo2 ⁱ | 89.86 (4) |
| O8—Mo2—O6 ⁱ | 87.6 (3) | Mo3 ⁱ —O4—Mo2 ⁱ | 90.14 (4) |
| O2—Mo2—O5 | 103.9 (3) | Mo2—O4—Mo2 ⁱ | 180.0 |
| O8—Mo2—O5 | 88.8 (4) | Mo1—O5—Mo2 | 115.7 (3) |
| O6 ⁱ —Mo2—O5 | 153.3 (3) | Mo2 ⁱ —O6—Mo1 | 116.7 (3) |
| O2—Mo2—O10 | 103.7 (4) | Mo1—O7—Mo3 | 117.0 (3) |
| O8—Mo2—O10 | 153.6 (3) | Mo2—O8—Mo3 | 116.7 (3) |
| O6 ⁱ —Mo2—O10 | 85.9 (3) | Mo3 ⁱ —O9—Mo1 | 116.9 (3) |
| O5—Mo2—O10 | 85.6 (3) | Mo3 ⁱ —O10—Mo2 | 116.6 (3) |
| O2—Mo2—O4 | 179.1 (3) | N3—C1—N2 | 125.9 (10) |
| O8—Mo2—O4 | 77.2 (2) | N3—C1—N1 | 119.6 (10) |
| O6 ⁱ —Mo2—O4 | 76.4 (2) | N2—C1—N1 | 114.3 (10) |
| O5—Mo2—O4 | 77.0 (2) | N2—C2—C3 | 122.4 (13) |
| O10—Mo2—O4 | 76.4 (2) | N2—C2—H2 | 118.8 |
| O3—Mo3—O10 ⁱ | 103.7 (4) | C3—C2—H2 | 118.8 |
| O3—Mo3—O9 ⁱ | 104.2 (4) | C4—C3—C2 | 118.3 (12) |
| O10 ⁱ —Mo3—O9 ⁱ | 88.2 (3) | C4—C3—H3 | 120.9 |
| O3—Mo3—O7 | 103.1 (4) | C2—C3—H3 | 120.9 |

supplementary materials

| | | | |
|--------------------------|------------|----------|------------|
| O10 ⁱ —Mo3—O7 | 88.0 (3) | N3—C4—C3 | 119.8 (12) |
| O9 ⁱ —Mo3—O7 | 152.6 (3) | N3—C4—H4 | 120.1 |
| O3—Mo3—O8 | 103.1 (4) | C3—C4—H4 | 120.1 |
| O10 ⁱ —Mo3—O8 | 153.1 (3) | N5—C5—N4 | 124.5 (10) |
| O9 ⁱ —Mo3—O8 | 85.6 (3) | N5—C5—N1 | 118.0 (9) |
| O7—Mo3—O8 | 85.7 (3) | N4—C5—N1 | 117.5 (9) |
| O3—Mo3—O4 | 179.0 (4) | C7—C6—N4 | 121.1 (11) |
| O10 ⁱ —Mo3—O4 | 77.1 (2) | C7—C6—H6 | 119.5 |
| O9 ⁱ —Mo3—O4 | 76.4 (2) | N4—C6—H6 | 119.5 |
| O7—Mo3—O4 | 76.2 (2) | C6—C7—C8 | 118.8 (11) |
| O8—Mo3—O4 | 76.0 (2) | C6—C7—H7 | 120.6 |
| C5—N1—C1 | 128.6 (9) | C8—C7—H7 | 120.6 |
| C5—N1—H1N | 115.7 | N5—C8—C7 | 121.2 (10) |
| C1—N1—H1N | 115.7 | N5—C8—H8 | 119.4 |
| C1—N2—C2 | 114.8 (10) | C7—C8—H8 | 119.4 |
| C1—N3—C4 | 118.7 (10) | | |

Symmetry codes: (i) $-x, -y+2, -z+1$.

Hydrogen-bond geometry ($\text{\AA}, ^\circ$)

| $D-H\cdots A$ | $D-H$ | $H\cdots A$ | $D\cdots A$ | $D-H\cdots A$ |
|----------------------------------|-------|-------------|-------------|---------------|
| N3—H3N \cdots N4 | 0.86 | 1.95 | 2.605 (12) | 132 |
| N1—H1N \cdots N5 ⁱⁱ | 0.86 | 2.07 | 2.924 (13) | 180 |
| C2—H2 \cdots O8 ⁱⁱⁱ | 0.93 | 2.65 | 3.444 (14) | 144 |
| C4—H4 \cdots O2 ^{iv} | 0.93 | 2.69 | 3.391 (14) | 133 |
| C6—H6 \cdots O6 ^v | 0.93 | 2.38 | 3.250 (15) | 157 |
| C7—H7 \cdots O1 ^{vi} | 0.93 | 2.51 | 3.196 (14) | 131 |

Symmetry codes: (ii) $-x+1, -y+2, -z+1$; (iii) $-x+1/2, y+1/2, -z+1/2$; (iv) $x+1/2, -y+3/2, z-1/2$; (v) $-x+1/2, y-1/2, -z+1/2$; (vi) $x+1/2, -y+3/2, z+1/2$.

Fig. 1

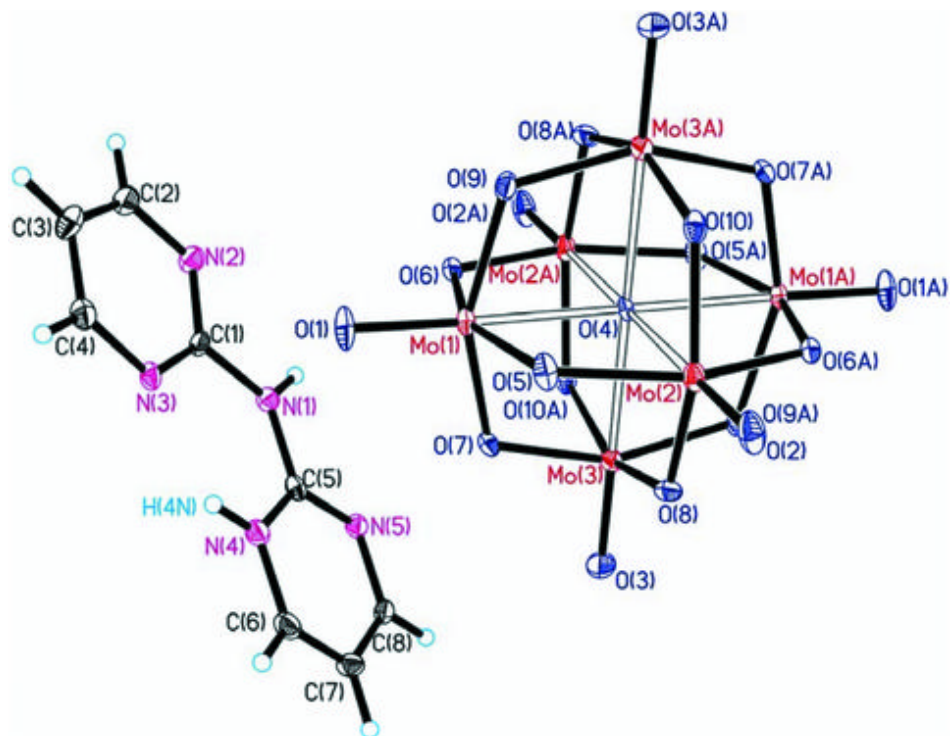


Fig. 2

