

Acta Crystallographica Section E

## Structure Reports

Online

ISSN 1600-5368

# 5,6-Dichloro-2-(3-methoxyphenyl)-isoindoline-1,3-dione

 Orhan Büyükgüngör<sup>a\*</sup> and Mustafa Odabaşoğlu<sup>b</sup>
<sup>a</sup>Department of Physics, Faculty of Arts and Sciences, Ondokuz Mayıs University, TR-55139 Kurupelit Samsun, Turkey, and <sup>b</sup>Department of Chemistry, Faculty of Arts and Sciences, Ondokuz Mayıs University, TR-55139 Kurupelit Samsun, Turkey

Correspondence e-mail: orhanb@omu.edu.tr

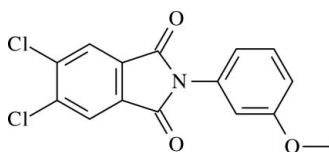
Received 4 April 2008; accepted 17 April 2008

 Key indicators: single-crystal X-ray study;  $T = 296$  K; mean  $\sigma(\text{C}-\text{C}) = 0.006$  Å;  $R$  factor = 0.071;  $wR$  factor = 0.170; data-to-parameter ratio = 14.0.

The title compound,  $\text{C}_{15}\text{H}_9\text{Cl}_2\text{NO}_3$ , crystallizes as an inversion twin, the ratio of the twin components being 0.43 (13):0.57 (13). The isoindoline group is planar and inclined by  $77.63$  (3)° to the aromatic ring substituent. The crystal structure is stabilized by aromatic  $\pi-\pi$  stacking interactions involving the benzene rings of adjacent isoindoline groups, with a centroid-centroid distance of  $3.664$  (7) Å and an interplanar separation of  $3.409$  Å.

## Related literature

For general background, see: Chapman *et al.* (1979); Hall *et al.*, (1983; 1987); Srivastava *et al.* (2001); Abdel-Hafez (2004); Sena *et al.* (2007).



## Experimental

### Crystal data

 $\text{C}_{15}\text{H}_9\text{Cl}_2\text{NO}_3$   
 $M_r = 322.13$ 

 Orthorhombic,  $P2_12_12_1$   
 $a = 6.8689$  (5) Å

 $b = 9.7362$  (10) Å  
 $c = 20.4271$  (14) Å  
 $V = 1366.1$  (2) Å<sup>3</sup>  
 $Z = 4$ 

 Mo  $K\alpha$  radiation  
 $\mu = 0.48$  mm<sup>-1</sup>  
 $T = 296$  K  
 $0.65 \times 0.51 \times 0.23$  mm

### Data collection

 Stoe IPDSII diffractometer  
 Absorption correction: integration  
 ( $X\text{-RED32}$ ; Stoe & Cie, 2002)  
 $T_{\min} = 0.685$ ,  $T_{\max} = 0.888$ 

 6123 measured reflections  
 2687 independent reflections  
 2076 reflections with  $I > 2\sigma(I)$   
 $R_{\text{int}} = 0.117$ 

### Refinement

 $R[F^2 > 2\sigma(F^2)] = 0.071$   
 $wR(F^2) = 0.169$   
 $S = 1.00$   
 2687 reflections  
 192 parameters  
 H-atom parameters constrained

 $\Delta\rho_{\max} = 0.63$  e Å<sup>-3</sup>  
 $\Delta\rho_{\min} = -0.57$  e Å<sup>-3</sup>  
 Absolute structure: Flack (1983),  
 1114 Friedel pairs  
 Flack parameter: 0.43 (13)

Data collection: *X-AREA* (Stoe & Cie, 2002); cell refinement: *X-AREA*; data reduction: *X-RED32* (Stoe & Cie, 2002); program(s) used to solve structure: *SHELXS97* (Sheldrick, 2008); program(s) used to refine structure: *SHELXL97* (Sheldrick, 2008); molecular graphics: *ORTEP-3 for Windows* (Farrugia, 1997); software used to prepare material for publication: *WinGX* (Farrugia, 1999).

The authors acknowledge the Faculty of Arts and Sciences, Ondokuz Mayıs University, Turkey, for the use of the Stoe IPDSII diffractometer (purchased under grant F.279 of the University Research Fund).

Supplementary data and figures for this paper are available from the IUCr electronic archives (Reference: RZ2205).

## References

- Abdel-Hafez, A. A. M. (2004). *Arch. Pharm. Res.* **27**, 495–501.  
 Chapman, J. M., Cocolas, G. H. & Hall, I. H. (1979). *J. Med. Chem.* **22**, 1399–1402.  
 Farrugia, L. J. (1997). *J. Appl. Cryst.* **30**, 565.  
 Farrugia, L. J. (1999). *J. Appl. Cryst.* **32**, 837–838.  
 Flack, H. D. (1983). *Acta Cryst.* **A39**, 876–881.  
 Hall, I. H., Reynolds, D. J., Wong, O. T., Oswald, C. B. & Murthy, A. R. K. (1987). *Pharm. Res.* **4**, 472–479.  
 Hall, I. H., Voorstad, P. J., Chapman, J. M. & Cocolas, G. H. (1983). *J. Pharm. Sci.* **72**, 845–851.  
 Sena, V. L. M., Srivastava, M. R., de Simone, C. A., da Cruz Gonçalves, S. M., Silva, R. O. & Pereira, M. A. (2007). *J. Braz. Chem. Soc.* **18**, 1224–1234.  
 Sheldrick, G. M. (2008). *Acta Cryst.* **A64**, 112–122.  
 Srivastava, R. M., Oliveira, F. J. S., da Silva, L. P., de Freitas Filho, J. R., Oliveira, S. P. & Lima, V. L. M. (2001). *Carbohydr. Res.* **332**, 335–340.  
 Stoe & Cie (2002). *X-AREA* and *X-RED32*. Stoe & Cie, Darmstadt, Germany.

**supplementary materials**

*Acta Cryst.* (2008). E64, o881 [ doi:10.1107/S1600536808010659 ]

## 5,6-Dichloro-2-(3-methoxyphenyl)isoindoline-1,3-dione

O. Büyükgüngör and M. Odabasoglu

### Comment

The present work is part of a structural study of derivatives of *N*-arylphthalimides (Abdel-Hafez, 2004; Chapman *et al.*, 1979; Hall *et al.*, 1983; Hall *et al.*, 1987; Sena *et al.*, 2007; Srivastava *et al.*, 2001). We report here the crystal structure of 5,6-dichloro-2-(3-methoxyphenyl)isoindoline-1,3-dione.

The molecule of the title compound consist of a 5,6-dichlorophthalimide unit connected to a *m*-methoxyphenyl group through the nitrogen atom (Fig. 1). The isoindoline ring (atoms N1/C1–C8) is almost planar, the largest deviation from the mean plane being 0.051 (3) Å for atom C5. The dihedral angle between the methoxyphenyl ring and the mean plane of the isoindoline group is 77.63 (3)°. The crystal packing is stabilized by aromatic  $\pi\cdots\pi$  stacking interactions (Fig. 2) occurring between the aromatic rings of isoindoline groups at  $(x, y, z)$  and  $(-1/2+x; 3/2 - y; 1-z)$ , with a centroid-centroid distance of 3.664 (7) Å and a plane-plane separations of 3.409 Å.

### Experimental

A mixture of 4,5-dichlorophthalic acid (1.175 g, 0.005 mol) and 2-aminophenol (0.545 g, 0.02 mol) in DMF (1.5 ml) was heated at boiling temperature for 15 min, then ethanol (95%, 50 ml) was added. Crystals of the title compound suitable for X-ray analysis were obtained by slow evaporation of this mixture at room temperature (yield 80%; mp. 546–548 K).

### Refinement

H atoms were positioned geometrically, with C—H = 0.93 and 0.96 Å for aromatic and methyl H, respectively, and constrained to ride on their parent atoms with  $U_{\text{iso}}(\text{H}) = 1.2U_{\text{eq}}(\text{C})$  or  $1.5U_{\text{eq}}(\text{C})$  for methyl H atoms. The rather high Rint value is ascribed to the poor nature of the available crystals.

### Figures

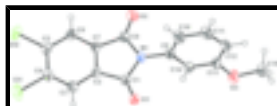


Fig. 1. The molecular structure of the title molecule, with the atom-numbering scheme. Displacement ellipsoids are drawn at the 30% probability level.



Fig. 2. A partial packing diagram of the title compound, showing the formation of  $\pi\cdots\pi$  stacking interactions. H atoms are omitted for clarity. Cg1 and Cg1<sup>i</sup> are the centroids of the benzene rings of the isoindoline groups. [Symmetry code: (i)  $-1/2+x, 3/2-y, 1-z$ ].

## 5,6-Dichloro-2-(3-methoxyphenyl)isoindoline-1,3-dione

### Crystal data

|                                |   |
|--------------------------------|---|
| $C_{15}H_9Cl_2NO_3$            | $F_{000} = 656$                           |
| $M_r = 322.13$                 | $D_x = 1.566 \text{ Mg m}^{-3}$           |
| Orthorhombic, $P2_12_12_1$     | Mo $K\alpha$ radiation                    |
| Hall symbol: P 2ac 2ab         | $\lambda = 0.71073 \text{ \AA}$           |
| $a = 6.8689 (5) \text{ \AA}$   | Cell parameters from 6123 reflections     |
| $b = 9.7362 (10) \text{ \AA}$  | $\theta = 2.0\text{--}27.3^\circ$         |
| $c = 20.4271 (14) \text{ \AA}$ | $\mu = 0.48 \text{ mm}^{-1}$              |
| $V = 1366.1 (2) \text{ \AA}^3$ | $T = 296 \text{ K}$                       |
| $Z = 4$                        | Prism, colourless                         |
|                                | $0.65 \times 0.51 \times 0.23 \text{ mm}$ |

### Data collection

|   |  |
|---|--|
| Stoe IPDSII<br>diffractometer                                     | 2687 independent reflections           |
| Monochromator: plane graphite                                     | 2076 reflections with $I > 2\sigma(I)$ |
| Detector resolution: $6.67 \text{ pixels mm}^{-1}$                | $R_{\text{int}} = 0.117$               |
| $T = 296 \text{ K}$   | $\theta_{\text{max}} = 26.0^\circ$     |
| $\omega$ scan rotation method                                     | $\theta_{\text{min}} = 2.0^\circ$      |
| Absorption correction: integration<br>(X-RED32; Stoe & Cie, 2002) | $h = -8 \rightarrow 8$                 |
| $T_{\text{min}} = 0.685$ , $T_{\text{max}} = 0.888$               | $k = -12 \rightarrow 10$               |
| 6123 measured reflections   | $l = -23 \rightarrow 25$               |

### Refinement

|  |   |
|--|---|
| Refinement on $F^2$  | H-atom parameters constrained   |
| Least-squares matrix: full                                     | $w = 1/[\sigma^2(F_o^2) + (0.1011P)^2]$   |
| $R[F^2 > 2\sigma(F^2)] = 0.071$                                | where $P = (F_o^2 + 2F_c^2)/3$  |
| $wR(F^2) = 0.169$  | $(\Delta/\sigma)_{\text{max}} = 0.001$  |
| $S = 1.01$   | $\Delta\rho_{\text{max}} = 0.63 \text{ e \AA}^{-3}$   |
| 2687 reflections   | $\Delta\rho_{\text{min}} = -0.57 \text{ e \AA}^{-3}$  |
| 192 parameters   | Extinction correction: SHELXL97 (Sheldrick, 2008),<br>$F_c^* = kFc[1+0.001xFc^2\lambda^3/\sin(2\theta)]^{-1/4}$ |
| Primary atom site location: structure-invariant direct methods | Extinction coefficient: 0.054 (7)   |
| Secondary atom site location: difference Fourier map           | Absolute structure: Flack (1983), 1114 Friedel pairs  |
| Hydrogen site location: inferred from neighbouring sites       | Flack parameter: 0.43 (13)  |

*Special details*

**Geometry.** All e.s.d.'s (except the e.s.d. in the dihedral angle between two l.s. planes) are estimated using the full covariance matrix. The cell e.s.d.'s are taken into account individually in the estimation of e.s.d.'s in distances, angles and torsion angles; correlations between e.s.d.'s in cell parameters are only used when they are defined by crystal symmetry. An approximate (isotropic) treatment of cell e.s.d.'s is used for estimating e.s.d.'s involving l.s. planes.

**Refinement.** Refinement of  $F^2$  against ALL reflections. The weighted  $R$ -factor  $wR$  and goodness of fit  $S$  are based on  $F^2$ , conventional  $R$ -factors  $R$  are based on  $F$ , with  $F$  set to zero for negative  $F^2$ . The threshold expression of  $F^2 > \sigma(F^2)$  is used only for calculating  $R$ -factors(gt) *etc.* and is not relevant to the choice of reflections for refinement.  $R$ -factors based on  $F^2$  are statistically about twice as large as those based on  $F$ , and  $R$ -factors based on ALL data will be even larger.

*Fractional atomic coordinates and isotropic or equivalent isotropic displacement parameters ( $\text{\AA}^2$ )*

|      | <i>x</i>     | <i>y</i>     | <i>z</i>     | $U_{\text{iso}}^*/U_{\text{eq}}$ |
|------|--------------|--------------|--------------|----------------------------------|
| C1   | 0.2767 (6)   | 0.3976 (4)   | 0.4834 (2)   | 0.0408 (9)                       |
| C2   | 0.2607 (6)   | 0.5458 (4)   | 0.5011 (2)   | 0.0380 (8)                       |
| C3   | 0.2552 (7)   | 0.6055 (4)   | 0.5626 (2)   | 0.0474 (9)                       |
| H3   | 0.2551       | 0.5526       | 0.6005       | 0.057*                           |
| C4   | 0.2499 (6)   | 0.7459 (4)   | 0.5652 (2)   | 0.0458 (9)                       |
| C5   | 0.2520 (6)   | 0.8278 (4)   | 0.5080 (2)   | 0.0444 (9)                       |
| C6   | 0.2545 (7)   | 0.7642 (4)   | 0.4471 (2)   | 0.0463 (9)                       |
| H6   | 0.2538       | 0.8157       | 0.4088       | 0.056*                           |
| C7   | 0.2579 (6)   | 0.6225 (4)   | 0.44509 (19) | 0.0395 (8)                       |
| C8   | 0.2677 (6)   | 0.5285 (4)   | 0.3883 (2)   | 0.0438 (9)                       |
| C9   | 0.3137 (6)   | 0.2765 (5)   | 0.3758 (2)   | 0.0436 (10)                      |
| C10  | 0.4978 (6)   | 0.2535 (6)   | 0.3505 (3)   | 0.0598 (13)                      |
| H10  | 0.5993       | 0.3135       | 0.3599       | 0.072*                           |
| C11  | 0.5282 (7)   | 0.1425 (6)   | 0.3118 (3)   | 0.0624 (14)                      |
| H11  | 0.6517       | 0.1277       | 0.2946       | 0.075*                           |
| C12  | 0.3806 (7)   | 0.0500 (5)   | 0.2972 (2)   | 0.0527 (12)                      |
| H12  | 0.4041       | -0.0263      | 0.2710       | 0.063*                           |
| C13  | 0.1967 (7)   | 0.0752 (5)   | 0.3229 (2)   | 0.0477 (11)                      |
| C14  | 0.1630 (6)   | 0.1861 (4)   | 0.3621 (2)   | 0.0466 (10)                      |
| H14  | 0.0397       | 0.2011       | 0.3795       | 0.056*                           |
| C15  | 0.0552 (10)  | -0.1131 (6)  | 0.2632 (3)   | 0.0743 (16)                      |
| H15A | -0.0652      | -0.1629      | 0.2605       | 0.112*                           |
| H15B | 0.1584       | -0.1749      | 0.2749       | 0.112*                           |
| H15C | 0.0834       | -0.0720      | 0.2216       | 0.112*                           |
| N1   | 0.2788 (5)   | 0.3963 (4)   | 0.41436 (16) | 0.0412 (8)                       |
| O1   | 0.2907 (5)   | 0.2994 (3)   | 0.51795 (15) | 0.0550 (8)                       |
| O2   | 0.2669 (6)   | 0.5562 (3)   | 0.33082 (15) | 0.0616 (9)                       |
| O3   | 0.0389 (5)   | -0.0085 (4)  | 0.3116 (2)   | 0.0749 (11)                      |
| Cl1  | 0.2389 (2)   | 0.82582 (13) | 0.64049 (6)  | 0.0730 (4)                       |
| Cl2  | 0.25735 (16) | 1.00342 (11) | 0.51245 (6)  | 0.0578 (4)                       |

## supplementary materials

---

### Atomic displacement parameters ( $\text{\AA}^2$ )

|     | $U^{11}$    | $U^{22}$    | $U^{33}$    | $U^{12}$     | $U^{13}$     | $U^{23}$     |
|-----|-------------|-------------|-------------|--------------|--------------|--------------|
| C1  | 0.047 (2)   | 0.0320 (19) | 0.044 (2)   | -0.0019 (18) | 0.0005 (19)  | 0.0014 (16)  |
| C2  | 0.0407 (16) | 0.0300 (17) | 0.043 (2)   | -0.0036 (16) | -0.0006 (19) | -0.0017 (14) |
| C3  | 0.058 (2)   | 0.041 (2)   | 0.043 (2)   | 0.004 (2)    | -0.004 (2)   | -0.0045 (17) |
| C4  | 0.0455 (19) | 0.044 (2)   | 0.047 (2)   | 0.003 (2)    | -0.006 (2)   | -0.0117 (17) |
| C5  | 0.0383 (15) | 0.0338 (19) | 0.061 (2)   | 0.0010 (17)  | -0.006 (2)   | -0.0052 (18) |
| C6  | 0.0487 (19) | 0.037 (2)   | 0.053 (2)   | 0.006 (2)    | 0.001 (2)    | 0.0073 (17)  |
| C7  | 0.0399 (17) | 0.0360 (19) | 0.043 (2)   | -0.0027 (18) | 0.001 (2)    | 0.0000 (15)  |
| C8  | 0.049 (2)   | 0.041 (2)   | 0.042 (2)   | 0.004 (2)    | 0.0003 (18)  | 0.0012 (16)  |
| C9  | 0.054 (2)   | 0.043 (2)   | 0.034 (2)   | 0.0034 (19)  | 0.0016 (15)  | 0.0006 (18)  |
| C10 | 0.050 (2)   | 0.072 (3)   | 0.058 (3)   | -0.006 (2)   | 0.007 (2)    | -0.016 (3)   |
| C11 | 0.057 (3)   | 0.069 (4)   | 0.061 (3)   | 0.007 (3)    | 0.010 (2)    | -0.010 (3)   |
| C12 | 0.075 (3)   | 0.043 (3)   | 0.040 (3)   | 0.012 (2)    | 0.002 (2)    | -0.011 (2)   |
| C13 | 0.066 (3)   | 0.035 (2)   | 0.042 (2)   | -0.0022 (19) | -0.0012 (18) | -0.0046 (18) |
| C14 | 0.054 (2)   | 0.040 (2)   | 0.046 (2)   | 0.0013 (19)  | 0.0058 (18)  | -0.001 (2)   |
| C15 | 0.108 (4)   | 0.059 (3)   | 0.055 (3)   | -0.021 (3)   | -0.001 (3)   | -0.013 (3)   |
| N1  | 0.0523 (19) | 0.0362 (17) | 0.0351 (18) | -0.0028 (15) | 0.0025 (15)  | -0.0036 (13) |
| O1  | 0.087 (2)   | 0.0336 (15) | 0.0445 (17) | 0.0030 (16)  | -0.0010 (15) | 0.0009 (12)  |
| O2  | 0.090 (2)   | 0.0525 (18) | 0.0425 (18) | 0.004 (2)    | 0.0015 (18)  | 0.0047 (14)  |
| O3  | 0.081 (2)   | 0.067 (2)   | 0.076 (3)   | -0.026 (2)   | 0.0145 (19)  | -0.027 (2)   |
| Cl1 | 0.1007 (9)  | 0.0574 (7)  | 0.0609 (8)  | 0.0176 (8)   | -0.0121 (8)  | -0.0238 (6)  |
| Cl2 | 0.0536 (5)  | 0.0314 (5)  | 0.0883 (8)  | 0.0032 (5)   | -0.0054 (6)  | -0.0070 (5)  |

### Geometric parameters ( $\text{\AA}$ , $^\circ$ )

|          |           |             |           |
|----------|-----------|-------------|-----------|
| C1—O1    | 1.192 (5) | C9—C10      | 1.384 (6) |
| C1—N1    | 1.410 (5) | C9—C14      | 1.387 (6) |
| C1—C2    | 1.491 (5) | C9—N1       | 1.428 (5) |
| C2—C7    | 1.367 (5) | C10—C11     | 1.355 (7) |
| C2—C3    | 1.384 (6) | C10—H10     | 0.9300    |
| C3—C4    | 1.368 (6) | C11—C12     | 1.388 (7) |
| C3—H3    | 0.9300    | C11—H11     | 0.9300    |
| C4—C5    | 1.415 (6) | C12—C13     | 1.390 (6) |
| C4—C11   | 1.725 (4) | C12—H12     | 0.9300    |
| C5—C6    | 1.389 (6) | C13—C14     | 1.364 (6) |
| C5—Cl2   | 1.713 (4) | C13—O3      | 1.376 (5) |
| C6—C7    | 1.381 (6) | C14—H14     | 0.9300    |
| C6—H6    | 0.9300    | C15—O3      | 1.424 (6) |
| C7—C8    | 1.479 (6) | C15—H15A    | 0.9600    |
| C8—O2    | 1.205 (5) | C15—H15B    | 0.9600    |
| C8—N1    | 1.395 (5) | C15—H15C    | 0.9600    |
| O1—C1—N1 | 125.7 (4) | C14—C9—N1   | 120.2 (3) |
| O1—C1—C2 | 129.6 (4) | C11—C10—C9  | 119.2 (4) |
| N1—C1—C2 | 104.6 (3) | C11—C10—H10 | 120.4     |
| C7—C2—C3 | 122.0 (4) | C9—C10—H10  | 120.4     |

|               |            |                 |            |
|---------------|------------|-----------------|------------|
| C7—C2—C1      | 109.0 (3)  | C10—C11—C12     | 122.0 (4)  |
| C3—C2—C1      | 129.0 (4)  | C10—C11—H11     | 119.0      |
| C4—C3—C2      | 117.1 (4)  | C12—C11—H11     | 119.0      |
| C4—C3—H3      | 121.5      | C11—C12—C13     | 117.9 (4)  |
| C2—C3—H3      | 121.5      | C11—C12—H12     | 121.1      |
| C3—C4—C5      | 122.0 (4)  | C13—C12—H12     | 121.1      |
| C3—C4—C11     | 119.1 (3)  | C14—C13—O3      | 115.7 (4)  |
| C5—C4—C11     | 118.9 (3)  | C14—C13—C12     | 121.1 (4)  |
| C6—C5—C4      | 119.2 (4)  | O3—C13—C12      | 123.2 (4)  |
| C6—C5—C12     | 119.5 (3)  | C13—C14—C9      | 119.6 (4)  |
| C4—C5—C12     | 121.2 (3)  | C13—C14—H14     | 120.2      |
| C7—C6—C5      | 118.2 (4)  | C9—C14—H14      | 120.2      |
| C7—C6—H6      | 120.9      | O3—C15—H15A     | 109.5      |
| C5—C6—H6      | 120.9      | O3—C15—H15B     | 109.5      |
| C2—C7—C6      | 121.4 (4)  | H15A—C15—H15B   | 109.5      |
| C2—C7—C8      | 108.6 (3)  | O3—C15—H15C     | 109.5      |
| C6—C7—C8      | 130.0 (4)  | H15A—C15—H15C   | 109.5      |
| O2—C8—N1      | 125.4 (4)  | H15B—C15—H15C   | 109.5      |
| O2—C8—C7      | 128.7 (4)  | C8—N1—C1        | 111.9 (3)  |
| N1—C8—C7      | 105.9 (3)  | C8—N1—C9        | 123.5 (3)  |
| C10—C9—C14    | 120.3 (4)  | C1—N1—C9        | 124.1 (3)  |
| C10—C9—N1     | 119.5 (4)  | C13—O3—C15      | 118.6 (4)  |
| O1—C1—C2—C7   | 176.9 (5)  | C14—C9—C10—C11  | 0.5 (8)    |
| N1—C1—C2—C7   | -1.1 (5)   | N1—C9—C10—C11   | -177.4 (4) |
| O1—C1—C2—C3   | -1.1 (8)   | C9—C10—C11—C12  | -0.6 (9)   |
| N1—C1—C2—C3   | -179.1 (4) | C10—C11—C12—C13 | 0.8 (8)    |
| C7—C2—C3—C4   | -1.0 (7)   | C11—C12—C13—C14 | -0.9 (7)   |
| C1—C2—C3—C4   | 176.7 (4)  | C11—C12—C13—O3  | 179.7 (5)  |
| C2—C3—C4—C5   | -0.6 (8)   | O3—C13—C14—C9   | -179.7 (4) |
| C2—C3—C4—C11  | 178.9 (3)  | C12—C13—C14—C9  | 0.9 (7)    |
| C3—C4—C5—C6   | 1.7 (7)    | C10—C9—C14—C13  | -0.7 (7)   |
| C11—C4—C5—C6  | -177.9 (4) | N1—C9—C14—C13   | 177.2 (4)  |
| C3—C4—C5—C12  | -176.8 (4) | O2—C8—N1—C1     | 180.0 (5)  |
| C11—C4—C5—C12 | 3.6 (5)    | C7—C8—N1—C1     | 0.1 (5)    |
| C4—C5—C6—C7   | -1.0 (7)   | O2—C8—N1—C9     | 7.6 (7)    |
| C12—C5—C6—C7  | 177.4 (3)  | C7—C8—N1—C9     | -172.3 (4) |
| C3—C2—C7—C6   | 1.7 (7)    | O1—C1—N1—C8     | -177.5 (4) |
| C1—C2—C7—C6   | -176.5 (4) | C2—C1—N1—C8     | 0.6 (5)    |
| C3—C2—C7—C8   | 179.3 (4)  | O1—C1—N1—C9     | -5.2 (7)   |
| C1—C2—C7—C8   | 1.2 (5)    | C2—C1—N1—C9     | 172.9 (3)  |
| C5—C6—C7—C2   | -0.6 (7)   | C10—C9—N1—C8    | 72.8 (6)   |
| C5—C6—C7—C8   | -177.7 (4) | C14—C9—N1—C8    | -105.2 (5) |
| C2—C7—C8—O2   | 179.3 (5)  | C10—C9—N1—C1    | -98.6 (5)  |
| C6—C7—C8—O2   | -3.3 (9)   | C14—C9—N1—C1    | 83.4 (5)   |
| C2—C7—C8—N1   | -0.8 (5)   | C14—C13—O3—C15  | 170.2 (5)  |
| C6—C7—C8—N1   | 176.6 (5)  | C12—C13—O3—C15  | -10.5 (8)  |

Fig. 1

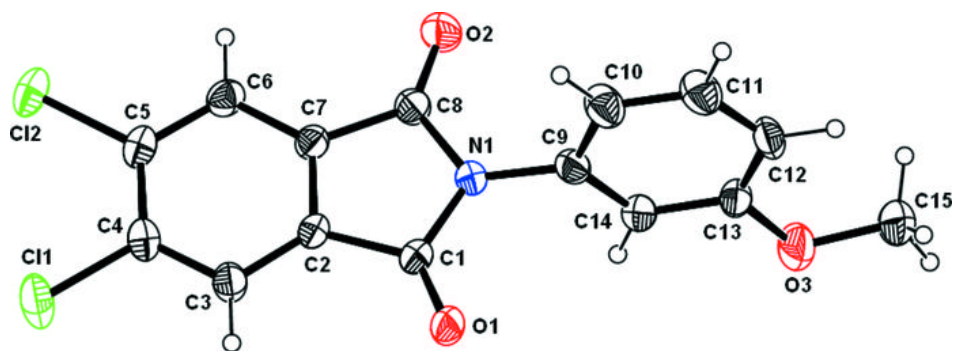


Fig. 2

