

Acta Crystallographica Section E

Structure Reports

Online

ISSN 1600-5368

9-Ethyl-3,6-bis(1*H*-imidazol-1-yl)-9*H*-carbazole

Hong Ping Zhou,* Liang Fei Lv, Peng Wang and Ren Tao Hu

Department of Chemistry, Anhui University, Hefei 230039, Peoples Republic of China and, Key Laboratory of Opto-Electronic Information Acquisition and Manipulation (Anhui University), Ministry of Education, Hefei 230039, People's Republic of China

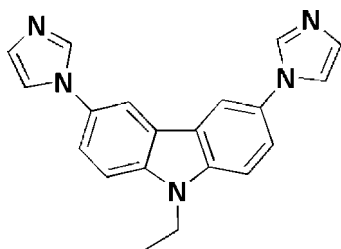
Correspondence e-mail: zhpzhp@263.net

Received 28 March 2008; accepted 9 May 2008

 Key indicators: single-crystal X-ray study; $T = 293$ K; mean $\sigma(\text{C}-\text{C}) = 0.002$ Å; R factor = 0.040; wR factor = 0.120; data-to-parameter ratio = 13.0.

In the crystal structure of the title compound, $\text{C}_{20}\text{H}_{17}\text{N}_5$, the two imidazole rings are twisted with respect to the carbazole plane, making dihedral angles of 55.8 (2) and 43.7 (2)°. The crystal structure is stabilized by weak $\text{C}-\text{H}\cdots\text{N}$ and $\text{C}-\text{H}\cdots\pi$ interactions.

Related literature

 For general background, see: Mi *et al.* (2003).


Experimental

Crystal data

$\text{C}_{20}\text{H}_{17}\text{N}_5$
 $M_r = 327.39$
 Triclinic, $P\bar{1}$
 $a = 5.625$ (2) Å
 $b = 8.826$ (3) Å
 $c = 17.367$ (6) Å
 $\alpha = 92.698$ (6)°
 $\beta = 96.011$ (6)°

$\gamma = 102.567$ (6)°
 $V = 834.8$ (5) Å³
 $Z = 2$
 Mo $K\alpha$ radiation
 $\mu = 0.08$ mm⁻¹
 $T = 293$ (2) K
 $0.46 \times 0.40 \times 0.16$ mm

Data collection

Bruker SMART APEX area-detector diffractometer
 Absorption correction: none
 6040 measured reflections

2928 independent reflections
 2611 reflections with $I > 2\sigma(I)$
 $R_{\text{int}} = 0.017$

Refinement

$R[F^2 > 2\sigma(F^2)] = 0.039$
 $wR(F^2) = 0.120$
 $S = 1.06$
 2928 reflections

225 parameters
 H-atom parameters constrained
 $\Delta\rho_{\text{max}} = 0.23$ e Å⁻³
 $\Delta\rho_{\text{min}} = -0.18$ e Å⁻³

Table 1

Hydrogen-bond geometry (Å, °).

$D-\text{H}\cdots A$	$D-\text{H}$	$\text{H}\cdots A$	$D\cdots A$	$D-\text{H}\cdots A$
$\text{C1}-\text{H1}\cdots\text{N1}^{\text{i}}$	0.93	2.73	3.533 (2)	144
$\text{C2}-\text{H2}\cdots\text{N1}^{\text{ii}}$	0.93	2.63	3.452 (2)	148
$\text{C16}-\text{H16}\cdots\text{N5}^{\text{ii}}$	0.93	2.68	3.509 (2)	149
$\text{C14}-\text{H14}\cdots\text{N5}^{\text{iii}}$	0.93	2.66	3.570 (2)	165

 Symmetry codes: (i) $-x, -y, -z$; (ii) $x+1, y, z$; (iii) $-x+1, -y+1, -z+1$.

Data collection: *SMART* (Bruker, 2002); cell refinement: *SAINTE* (Bruker, 2002); data reduction: *SAINTE*; program(s) used to solve structure: *SHELXS97* (Sheldrick, 2008); program(s) used to refine structure: *SHELXL97* (Sheldrick, 2008); molecular graphics: *ORTEPII* (Johnson, 1976); software used to prepare material for publication: *SHELXL97*.

This work was supported by the National Natural Science Foundation of China (50532030, 50703001 and 20771001), the Natural Science Foundation of Anhui Province, China (070414188), the Doctoral Program Foundation of the Ministry of Education of China, the Education Committee of Anhui Province, China (2006K J032A), the Team for Scientific Innovation Foundation of Anhui Province (2006K J007TD), the Young Teacher Foundation of Institutions of Higher Education of Anhui Province (2007jq1019), the Ministry of Education and the Persons with Ability Foundation of Anhui University, China.

Supplementary data and figures for this paper are available from the IUCr electronic archives (Reference: XU2412).

References

- Bruker (2002). *SMART* and *SAINTE*, Bruker AXS Inc., Madison, Wisconsin, USA.
 Johnson, C. K. (1976). *ORTEPII*. Report ORNL-5138. Oak Ridge National Laboratory, Tennessee, USA.
 Mi, B. X., Wang, P. F., Liu, M. W., Kwong, H. L., Wong, N. B., Lee, C. S. & Lee, S. T. (2003). *Chem. Mater.* **15**, 3148–3151.
 Sheldrick, G. M. (2008). *Acta Cryst.* **A64**, 112–122.

supplementary materials

Acta Cryst. (2008). E64, o1075 [doi:10.1107/S1600536808013937]

9-Ethyl-3,6-bis(1*H*-imidazol-1-yl)-9*H*-carbazole

H. P. Zhou, L. F. Lv, P. Wang and R. T. Hu

Comment

Carbazole derivatives exhibit good charge transfer and hole transporting properties, which are being explored for a multitude of optoelectronic and photocatalytic applications, including organic light emitting diodes (OLEDs) (Mi *et al.*, 2003). The title molecule containing imidazole with electrochemical and biology properties has been prepared, its crystal structure is reported here.

The molecular structure is shown in Fig. 1, the bond lengths and angles are normal. The dihedral angles between N2-imidazole and C4-benzene rings and between N4-imidazole and C10-benzene rings are 55.8 (2) and 43.7 (2)°, respectively. In the crystal structure, the molecules are stacked through the weak C19—H19A···Cgⁱ interactions (Cg is the centroid of the N1-imidazole ring), H19A···Cgⁱ = 2.85 Å, C19···Cgⁱ = 3.640 (11) Å and C19—H19A···Cgⁱ = 139° [symmetry code: (i) -1 + x, -1 + y, z]. The weak C—H···N hydrogen bonding (Table 1) helps to stabilize the crystal structure.

Experimental

For the preparation of 3,6-diimidazolyl-9-ethylcarbazole, a mixture of CuI (0.27 g, 1.40 mmol) and 1,10-phenanthroline (0.60 g, 3.00 mmol) were heated at 393 K with DMF (3 ml) as solvent for 10 min. Then, the mixture was cooled to room temperature, potassium *tert*-butanol (6.05 g, 54.00 mmol), imidazole (3.65 g, 54.00 mmol), 3,6-diiodo-9-ethylcarbazole (3.00 g, 6.70 mmol) and 18-crown-6 (litter) were added and heated at 413 k for 48 h, then the reaction mixture was heated to 433 k for 12 h, and cooled to room temperature. The mixture solution was poured into water and extracted by dichloromethane. The organic layer was separated, dried with anhydrous magnesium sulfate. Then it was filtered and concentrated, the re-crystallization from ethyl acetate produced light yellow single crystals (1.50 g, Yield 70.0%).

Refinement

All hydrogen atoms were placed in geometrically idealized positions and constrained to ride on their parent atoms, with C—H = 0.93 - 0.96 Å and $U_{iso}(H) = 1.2U_{eq}(C)$ or $1.5U_{eq}(C)$.

Figures

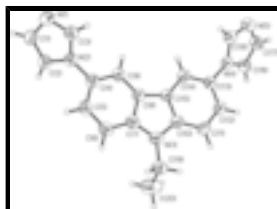


Fig. 1. The molecular structure of the title compound showing 50% probability displacement ellipsoids.

9-Ethyl-3,6-bis(1*H*-imidazol-1-yl)-9*H*-carbazole

Crystal data

$C_{20}H_{17}N_5$	$Z = 2$
$M_r = 327.39$	$F_{000} = 344$
Triclinic, $P\bar{1}$	$D_x = 1.302 \text{ Mg m}^{-3}$
Hall symbol: -P 1	Mo $K\alpha$ radiation
$a = 5.625 (2) \text{ \AA}$	$\lambda = 0.71073 \text{ \AA}$
$b = 8.826 (3) \text{ \AA}$	Cell parameters from 2928 reflections
$c = 17.367 (6) \text{ \AA}$	$\theta = 1.2\text{--}25.0^\circ$
$\alpha = 92.698 (6)^\circ$	$\mu = 0.08 \text{ mm}^{-1}$
$\beta = 96.011 (6)^\circ$	$T = 293 (2) \text{ K}$
$\gamma = 102.567 (6)^\circ$	Prism, yellow
$V = 834.8 (5) \text{ \AA}^3$	$0.46 \times 0.40 \times 0.16 \text{ mm}$

Data collection

Bruker SMART APEX area-detector diffractometer	2611 reflections with $I > 2\sigma(I)$
Radiation source: fine-focus sealed tube	$R_{\text{int}} = 0.017$
Monochromator: graphite	$\theta_{\text{max}} = 25.0^\circ$
$T = 293(2) \text{ K}$	$\theta_{\text{min}} = 1.2^\circ$
φ and ω scans	$h = -6 \rightarrow 6$
Absorption correction: none	$k = -10 \rightarrow 10$
6040 measured reflections	$l = -20 \rightarrow 20$
2928 independent reflections	

Refinement

Refinement on F^2	Hydrogen site location: inferred from neighbouring sites
Least-squares matrix: full	H-atom parameters constrained
$R[F^2 > 2\sigma(F^2)] = 0.039$	$w = 1/[\sigma^2(F_o^2) + (0.0695P)^2 + 0.1471P]$
$wR(F^2) = 0.120$	where $P = (F_o^2 + 2F_c^2)/3$
$S = 1.06$	$(\Delta/\sigma)_{\text{max}} < 0.001$
2928 reflections	$\Delta\rho_{\text{max}} = 0.23 \text{ e \AA}^{-3}$
225 parameters	$\Delta\rho_{\text{min}} = -0.18 \text{ e \AA}^{-3}$
Primary atom site location: structure-invariant direct methods	Extinction correction: SHELXL97 (Sheldrick, 2008), $F_c^* = kF_c[1 + 0.001x F_c^2 \lambda^3 / \sin(2\theta)]^{-1/4}$
Secondary atom site location: difference Fourier map	Extinction coefficient: 0.044 (6)

Special details

Geometry. All e.s.d.'s (except the e.s.d. in the dihedral angle between two l.s. planes) are estimated using the full covariance matrix. The cell e.s.d.'s are taken into account individually in the estimation of e.s.d.'s in distances, angles and torsion angles; correlations between e.s.d.'s in cell parameters are only used when they are defined by crystal symmetry. An approximate (isotropic) treatment of cell e.s.d.'s is used for estimating e.s.d.'s involving l.s. planes.

Fractional atomic coordinates and isotropic or equivalent isotropic displacement parameters (\AA^2)

	<i>x</i>	<i>y</i>	<i>z</i>	$U_{\text{iso}}^*/U_{\text{eq}}$
N2	0.49085 (19)	0.34017 (13)	0.10310 (6)	0.0435 (3)
N4	0.89546 (19)	0.72250 (13)	0.53896 (6)	0.0418 (3)
N5	0.6235 (2)	0.67394 (15)	0.62354 (7)	0.0553 (4)
N1	0.1184 (2)	0.19639 (15)	0.06703 (7)	0.0535 (3)
N3	1.2016 (2)	0.83688 (14)	0.24918 (7)	0.0484 (3)
C13	0.9898 (2)	0.75062 (15)	0.46637 (7)	0.0405 (3)
C5	0.8279 (3)	0.56084 (17)	0.09187 (8)	0.0485 (4)
H5	0.8010	0.5396	0.0383	0.058*
C9	0.7148 (2)	0.49327 (16)	0.21905 (7)	0.0432 (3)
H9	0.6179	0.4289	0.2500	0.052*
C12	1.1789 (2)	0.88178 (16)	0.46167 (8)	0.0459 (4)
H12	1.2463	0.9456	0.5062	0.055*
C7	1.0438 (2)	0.71535 (16)	0.20364 (8)	0.0438 (3)
C10	1.1590 (2)	0.82136 (16)	0.32594 (8)	0.0433 (3)
C11	1.2661 (2)	0.91729 (16)	0.39191 (8)	0.0476 (4)
H11	1.3933	1.0032	0.3890	0.057*
C8	0.8970 (2)	0.62019 (15)	0.25193 (7)	0.0416 (3)
C14	0.8859 (2)	0.65280 (15)	0.40123 (7)	0.0430 (3)
H14	0.7624	0.5652	0.4048	0.052*
C2	0.5129 (3)	0.22459 (17)	0.05004 (8)	0.0493 (4)
H2	0.6569	0.2093	0.0323	0.059*
C18	0.6561 (2)	0.68650 (16)	0.55011 (8)	0.0480 (4)
H18	0.5281	0.6722	0.5101	0.058*
C15	0.9703 (2)	0.68841 (15)	0.33029 (7)	0.0416 (3)
C1	0.2852 (3)	0.13828 (17)	0.02886 (8)	0.0515 (4)
H1	0.2460	0.0517	-0.0065	0.062*
C6	1.0107 (3)	0.68540 (17)	0.12343 (8)	0.0496 (4)
H6	1.1090	0.7476	0.0920	0.060*
C4	0.6822 (2)	0.46580 (16)	0.13922 (7)	0.0423 (3)
C16	1.0248 (3)	0.73427 (18)	0.61152 (8)	0.0503 (4)
H16	1.1944	0.7584	0.6235	0.060*
C19	1.3664 (3)	0.96821 (17)	0.22027 (9)	0.0535 (4)
H19A	1.3862	1.0591	0.2560	0.064*
H19B	1.2921	0.9914	0.1705	0.064*
C3	0.2492 (2)	0.31619 (17)	0.11053 (8)	0.0473 (4)
H3	0.1832	0.3784	0.1432	0.057*
C17	0.8562 (3)	0.70373 (19)	0.66187 (8)	0.0553 (4)
H17	0.8929	0.7030	0.7153	0.066*

supplementary materials

C20	1.6114 (4)	0.9380 (3)	0.21097 (14)	0.0896 (6)
H20A	1.6872	0.9167	0.2602	0.134*
H20B	1.7120	1.0279	0.1923	0.134*
H20C	1.5936	0.8501	0.1744	0.134*

Atomic displacement parameters (\AA^2)

	U^{11}	U^{22}	U^{33}	U^{12}	U^{13}	U^{23}
N2	0.0408 (6)	0.0507 (7)	0.0374 (6)	0.0095 (5)	0.0013 (4)	-0.0020 (5)
N4	0.0403 (6)	0.0420 (6)	0.0403 (6)	0.0042 (5)	0.0040 (5)	-0.0012 (5)
N5	0.0514 (7)	0.0583 (8)	0.0555 (8)	0.0067 (6)	0.0152 (6)	0.0044 (6)
N1	0.0427 (6)	0.0611 (8)	0.0533 (7)	0.0076 (6)	0.0006 (5)	0.0001 (6)
N3	0.0488 (7)	0.0466 (7)	0.0447 (7)	-0.0022 (5)	0.0084 (5)	0.0065 (5)
C13	0.0394 (7)	0.0409 (7)	0.0390 (7)	0.0047 (5)	0.0032 (5)	0.0012 (5)
C5	0.0521 (8)	0.0574 (9)	0.0353 (7)	0.0114 (7)	0.0047 (6)	0.0030 (6)
C9	0.0449 (7)	0.0436 (7)	0.0383 (7)	0.0042 (6)	0.0046 (5)	0.0022 (5)
C12	0.0446 (7)	0.0426 (8)	0.0448 (8)	0.0011 (6)	0.0003 (6)	-0.0031 (6)
C7	0.0438 (7)	0.0449 (8)	0.0416 (7)	0.0066 (6)	0.0056 (5)	0.0053 (6)
C10	0.0418 (7)	0.0415 (7)	0.0441 (7)	0.0032 (6)	0.0052 (5)	0.0050 (6)
C11	0.0429 (7)	0.0419 (8)	0.0508 (8)	-0.0048 (6)	0.0032 (6)	0.0029 (6)
C8	0.0433 (7)	0.0413 (7)	0.0380 (7)	0.0044 (6)	0.0051 (5)	0.0040 (5)
C14	0.0431 (7)	0.0388 (7)	0.0423 (7)	-0.0003 (6)	0.0040 (6)	0.0016 (6)
C2	0.0449 (8)	0.0552 (9)	0.0468 (8)	0.0118 (6)	0.0047 (6)	-0.0083 (6)
C18	0.0394 (7)	0.0499 (8)	0.0505 (8)	0.0019 (6)	0.0051 (6)	-0.0001 (6)
C15	0.0424 (7)	0.0381 (7)	0.0407 (7)	0.0015 (6)	0.0034 (5)	0.0035 (5)
C1	0.0513 (8)	0.0511 (8)	0.0483 (8)	0.0082 (7)	-0.0004 (6)	-0.0066 (6)
C6	0.0501 (8)	0.0552 (9)	0.0423 (8)	0.0051 (7)	0.0107 (6)	0.0101 (6)
C4	0.0397 (7)	0.0461 (8)	0.0400 (7)	0.0090 (6)	0.0017 (5)	-0.0001 (6)
C16	0.0441 (7)	0.0650 (9)	0.0411 (8)	0.0121 (6)	0.0021 (6)	0.0021 (6)
C19	0.0554 (9)	0.0474 (8)	0.0565 (9)	0.0047 (7)	0.0124 (7)	0.0122 (7)
C3	0.0406 (7)	0.0574 (9)	0.0442 (7)	0.0124 (6)	0.0045 (6)	0.0001 (6)
C17	0.0595 (9)	0.0679 (10)	0.0404 (8)	0.0165 (7)	0.0082 (6)	0.0074 (7)
C20	0.0618 (11)	0.0954 (15)	0.1158 (18)	0.0141 (10)	0.0283 (11)	0.0259 (13)

Geometric parameters (\AA , $^\circ$)

N2—C3	1.3501 (17)	C7—C6	1.391 (2)
N2—C2	1.3769 (18)	C7—C8	1.4142 (18)
N2—C4	1.4336 (18)	C10—C11	1.3909 (19)
N4—C18	1.3512 (18)	C10—C15	1.4116 (19)
N4—C16	1.3750 (18)	C11—H11	0.9300
N4—C13	1.4299 (17)	C8—C15	1.4428 (19)
N5—C18	1.3135 (19)	C14—C15	1.3913 (19)
N5—C17	1.370 (2)	C14—H14	0.9300
N1—C3	1.3039 (18)	C2—C1	1.344 (2)
N1—C1	1.3748 (19)	C2—H2	0.9300
N3—C7	1.3867 (18)	C18—H18	0.9300
N3—C10	1.3867 (18)	C1—H1	0.9300
N3—C19	1.4629 (18)	C6—H6	0.9300

C13—C14	1.3844 (18)	C16—C17	1.350 (2)
C13—C12	1.403 (2)	C16—H16	0.9300
C5—C6	1.378 (2)	C19—C20	1.483 (2)
C5—C4	1.400 (2)	C19—H19A	0.9700
C5—H5	0.9300	C19—H19B	0.9700
C9—C4	1.3820 (19)	C3—H3	0.9300
C9—C8	1.3960 (18)	C17—H17	0.9300
C9—H9	0.9300	C20—H20A	0.9600
C12—C11	1.378 (2)	C20—H20B	0.9600
C12—H12	0.9300	C20—H20C	0.9600
C3—N2—C2	105.71 (11)	C1—C2—H2	126.8
C3—N2—C4	127.00 (11)	N2—C2—H2	126.8
C2—N2—C4	127.18 (11)	N5—C18—N4	112.78 (12)
C18—N4—C16	105.83 (11)	N5—C18—H18	123.6
C18—N4—C13	126.09 (11)	N4—C18—H18	123.6
C16—N4—C13	128.00 (11)	C14—C15—C10	119.99 (12)
C18—N5—C17	104.42 (12)	C14—C15—C8	133.50 (12)
C3—N1—C1	104.81 (11)	C10—C15—C8	106.43 (12)
C7—N3—C10	108.52 (11)	C2—C1—N1	110.27 (13)
C7—N3—C19	125.61 (12)	C2—C1—H1	124.9
C10—N3—C19	125.58 (12)	N1—C1—H1	124.9
C14—C13—C12	121.06 (12)	C5—C6—C7	118.08 (13)
C14—C13—N4	119.69 (12)	C5—C6—H6	121.0
C12—C13—N4	119.18 (11)	C7—C6—H6	121.0
C6—C5—C4	120.98 (13)	C9—C4—C5	121.53 (13)
C6—C5—H5	119.5	C9—C4—N2	119.89 (12)
C4—C5—H5	119.5	C5—C4—N2	118.56 (12)
C4—C9—C8	118.25 (13)	C17—C16—N4	106.22 (13)
C4—C9—H9	120.9	C17—C16—H16	126.9
C8—C9—H9	120.9	N4—C16—H16	126.9
C11—C12—C13	120.91 (12)	N3—C19—C20	112.98 (14)
C11—C12—H12	119.5	N3—C19—H19A	109.0
C13—C12—H12	119.5	C20—C19—H19A	109.0
N3—C7—C6	129.66 (13)	N3—C19—H19B	109.0
N3—C7—C8	108.93 (12)	C20—C19—H19B	109.0
C6—C7—C8	121.33 (13)	H19A—C19—H19B	107.8
N3—C10—C11	129.53 (13)	N1—C3—N2	112.77 (12)
N3—C10—C15	109.31 (12)	N1—C3—H3	123.6
C11—C10—C15	121.11 (13)	N2—C3—H3	123.6
C12—C11—C10	118.32 (13)	C16—C17—N5	110.75 (13)
C12—C11—H11	120.8	C16—C17—H17	124.6
C10—C11—H11	120.8	N5—C17—H17	124.6
C9—C8—C7	119.82 (12)	C19—C20—H20A	109.5
C9—C8—C15	133.27 (12)	C19—C20—H20B	109.5
C7—C8—C15	106.82 (12)	H20A—C20—H20B	109.5
C13—C14—C15	118.58 (12)	C19—C20—H20C	109.5
C13—C14—H14	120.7	H20A—C20—H20C	109.5
C15—C14—H14	120.7	H20B—C20—H20C	109.5
C1—C2—N2	106.44 (12)		

supplementary materials

C18—N4—C13—C14	-44.43 (19)	C13—C14—C15—C8	-175.75 (14)
C16—N4—C13—C14	139.43 (14)	N3—C10—C15—C14	-176.74 (11)
C18—N4—C13—C12	132.48 (14)	C11—C10—C15—C14	1.0 (2)
C16—N4—C13—C12	-43.66 (19)	N3—C10—C15—C8	0.35 (15)
C14—C13—C12—C11	0.2 (2)	C11—C10—C15—C8	178.06 (12)
N4—C13—C12—C11	-176.63 (11)	C9—C8—C15—C14	-0.2 (3)
C10—N3—C7—C6	176.82 (13)	C7—C8—C15—C14	176.22 (14)
C19—N3—C7—C6	2.8 (2)	C9—C8—C15—C10	-176.67 (14)
C10—N3—C7—C8	0.07 (15)	C7—C8—C15—C10	-0.30 (15)
C19—N3—C7—C8	-173.96 (13)	N2—C2—C1—N1	0.16 (17)
C7—N3—C10—C11	-177.73 (13)	C3—N1—C1—C2	-0.17 (17)
C19—N3—C10—C11	-3.7 (2)	C4—C5—C6—C7	-0.9 (2)
C7—N3—C10—C15	-0.26 (16)	N3—C7—C6—C5	-175.61 (13)
C19—N3—C10—C15	173.77 (13)	C8—C7—C6—C5	0.8 (2)
C13—C12—C11—C10	1.1 (2)	C8—C9—C4—C5	0.6 (2)
N3—C10—C11—C12	175.49 (13)	C8—C9—C4—N2	-177.63 (11)
C15—C10—C11—C12	-1.7 (2)	C6—C5—C4—C9	0.3 (2)
C4—C9—C8—C7	-0.7 (2)	C6—C5—C4—N2	178.49 (12)
C4—C9—C8—C15	175.30 (14)	C3—N2—C4—C9	55.86 (19)
N3—C7—C8—C9	177.10 (12)	C2—N2—C4—C9	-128.49 (15)
C6—C7—C8—C9	0.0 (2)	C3—N2—C4—C5	-122.38 (15)
N3—C7—C8—C15	0.15 (15)	C2—N2—C4—C5	53.27 (19)
C6—C7—C8—C15	-176.93 (13)	C18—N4—C16—C17	0.40 (16)
C12—C13—C14—C15	-1.0 (2)	C13—N4—C16—C17	177.15 (13)
N4—C13—C14—C15	175.86 (11)	C7—N3—C19—C20	-89.67 (19)
C3—N2—C2—C1	-0.09 (16)	C10—N3—C19—C20	97.30 (19)
C4—N2—C2—C1	-176.48 (13)	C1—N1—C3—N2	0.11 (16)
C17—N5—C18—N4	0.02 (16)	C2—N2—C3—N1	-0.02 (16)
C16—N4—C18—N5	-0.26 (16)	C4—N2—C3—N1	176.39 (12)
C13—N4—C18—N5	-177.10 (12)	N4—C16—C17—N5	-0.41 (18)
C13—C14—C15—C10	0.4 (2)	C18—N5—C17—C16	0.24 (17)

Hydrogen-bond geometry (\AA , $^\circ$)

$D-H\cdots A$	$D-H$	$H\cdots A$	$D\cdots A$	$D-H\cdots A$
C1—H1 \cdots N1 ⁱ	0.93	2.73	3.533 (2)	144
C2—H2 \cdots N1 ⁱⁱ	0.93	2.63	3.452 (2)	148
C16—H16 \cdots N5 ⁱⁱ	0.93	2.68	3.509 (2)	149
C14—H14 \cdots N5 ⁱⁱⁱ	0.93	2.66	3.570 (2)	165

Symmetry codes: (i) $-x, -y, -z$; (ii) $x+1, y, z$; (iii) $-x+1, -y+1, -z+1$.

Fig. 1

