

Acta Crystallographica Section E

Structure Reports

Online

ISSN 1600-5368

4-Carboxypyridinium 3-carboxy-4-hydroxybenzenesulfonate

Zhong-long Wang,^{a,b*} Kai-lun Yao,^a Zu-li Liu^a and Hui-jin Xu^b^aDepartment of Physics, Huazhong University of Science and Technology, Wuhan 430074, People's Republic of China, and ^bScience College, China Three Gorges University, Yichang 443002, People's Republic of China

Correspondence e-mail: zhonglong_wang@126.com

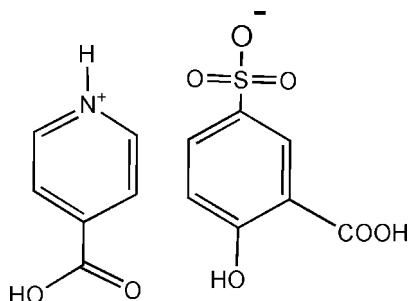
Received 22 May 2008; accepted 27 May 2008

Key indicators: single-crystal X-ray study; $T = 298$ K; mean $\sigma(\text{C}-\text{C}) = 0.008$ Å; R factor = 0.072; wR factor = 0.168; data-to-parameter ratio = 11.6.

Cocrystallization of 4-carboxypyridine (4-CPY) and 5-sulfosalicylic acid (5-H₂SSA) yields the title salt, C₆H₆NO₂⁺·C₇H₅O₆S⁻. In the crystal structure, the components of the salt are linked by a combination of intermolecular O—H···O and N—H···O, and weak C—H···O hydrogen bonds, forming a three-dimensional framework.

Related literature

For related literature, see: Aakeröy & Salmon (2005); Meng *et al.* (2007, 2008); Fan *et al.* (2005); Smith *et al.* (2006).



Experimental

Crystal data

C₆H₆NO₂⁺·C₇H₅O₆S⁻
 $M_r = 341.29$
 Orthorhombic, $P2_12_12_1$
 $a = 6.6358$ (6) Å
 $b = 13.0514$ (12) Å
 $c = 16.7415$ (14) Å

$V = 1449.9$ (2) Å³
 $Z = 4$
 Mo $K\alpha$ radiation
 $\mu = 0.27$ mm⁻¹
 $T = 298$ (2) K
 $0.30 \times 0.04 \times 0.02$ mm

Data collection

Bruker SMART APEX CCD area-detector diffractometer
 Absorption correction: none
 13287 measured reflections

2545 independent reflections
 1522 reflections with $I > 2\sigma(I)$
 $R_{\text{int}} = 0.143$

Refinement

$R[F^2 > 2\sigma(F^2)] = 0.072$
 $wR(F^2) = 0.168$
 $S = 0.97$
 2545 reflections
 220 parameters
 5 restraints

H atoms treated by a mixture of independent and constrained refinement
 $\Delta\rho_{\text{max}} = 0.45$ e Å⁻³
 $\Delta\rho_{\text{min}} = -0.37$ e Å⁻³
 Absolute structure: Flack (1983), 1056 Friedel pairs
 Flack parameter: -0.1 (2)

Table 1

Hydrogen-bond geometry (Å, °).

$D-H\cdots A$	$D-H$	$H\cdots A$	$D\cdots A$	$D-H\cdots A$
O1—H1···O5 ⁱ	0.82 (2)	1.82 (2)	2.632 (5)	170 (7)
N1—H1A···O2 ⁱⁱ	0.85 (2)	2.57 (5)	3.140 (7)	125 (5)
C3—H3···O3 ⁱⁱⁱ	0.93	2.51	3.379 (7)	156
O3—H3A···O6 ⁱⁱⁱ	0.82 (2)	2.57 (5)	3.140 (5)	127 (6)
O7—H7···O4 ^{iv}	0.83 (5)	1.87 (4)	2.654 (5)	155 (8)
C10—H10···O8 ^v	0.93	2.46	3.152 (8)	132
C11—H11···O4 ^{vi}	0.93	2.57	3.257 (7)	131
N1—H1A···O6	0.85 (2)	2.14 (3)	2.902 (6)	149 (5)
O3—H3A···O2	0.82 (2)	1.90 (4)	2.626 (5)	146 (6)
C10—H10···O4	0.93	2.54	3.331 (7)	143

Symmetry codes: (i) $-x + \frac{1}{2}, -y + 1, z - \frac{1}{2}$; (ii) $-x + 1, y - \frac{1}{2}, -z + \frac{1}{2}$; (iii) $-x + 1, y + \frac{1}{2}, -z + \frac{1}{2}$; (iv) $-x + 1, y - \frac{1}{2}, -z + \frac{3}{2}$; (v) $-x + 1, y + \frac{1}{2}, -z + \frac{3}{2}$; (vi) $x - \frac{1}{2}, -y + \frac{1}{2}, -z + 1$.

Data collection: SMART (Bruker, 2001); cell refinement: SAINT-Plus (Bruker, 2001); data reduction: SAINT-Plus; program(s) used to solve structure: SHELXS97 (Sheldrick, 2008); program(s) used to refine structure: SHELXL97 (Sheldrick, 2008); molecular graphics: PLATON (Spek, 2003); software used to prepare material for publication: PLATON.

This work was supported by the National Natural Science Foundation of China under grants No. 10574047, No. 10574048 and No. 20490210. This work was also supported by the National 973 Project under grant No. 2006CB921605.

Supplementary data and figures for this paper are available from the IUCr electronic archives (Reference: LH2633).

References

- Aakeröy, C. B. & Salmon, D. J. (2005). *CrystEngComm*, **7**, 439–448.
 Bruker (2001). *SAINTE-Plus* and *SMART*. Bruker AXS Inc., Madison, Wisconsin, USA.
 Fan, S.-R., Xiao, H.-P. & Zhu, L.-G. (2005). *Acta Cryst.* **E61**, o253–o255.
 Flack, H. D. (1983). *Acta Cryst.* **A39**, 876–881.
 Meng, X.-G., Xiao, Y.-L., Wang, Z.-L. & Liu, C.-L. (2008). *Acta Cryst.* **C64**, o53–o57.
 Meng, X.-G., Zhou, C.-S., Wang, L. & Liu, C.-L. (2007). *Acta Cryst.* **C63**, o667–o670.
 Sheldrick, G. M. (2008). *Acta Cryst.* **A64**, 112–122.
 Smith, G., Wermuth, U. D. & Healy, P. C. (2006). *J. Chem. Crystallogr.* **36**, 841–849.
 Spek, A. L. (2003). *J. Appl. Cryst.* **36**, 7–13.

supporting information

Acta Cryst. (2008). E64, o1192 [doi:10.1107/S1600536808015882]

4-Carboxypyridinium 3-carboxy-4-hydroxybenzenesulfonate

Zhong-long Wang, Kai-lun Yao, Zu-li Liu and Hui-jin Xu

S1. Comment

As awareness of the importance of pharmaceutical molecular adducts grows, it becomes imperative to fully understand and investigate the intermolecular interactions in a binary, ternary or multi-component organic adducts (Aakeröy and Salmon, 2005). 5-sulfosalicylic acid (5-H₂SSA), is a particularly strong acid which is capable of donating its sulfonic protons to many N-containing heterocycles, forming organic salts (Smith *et al.*, 2006; Meng *et al.*, 2007 and 2008; Fan *et al.*, 2005). With the aim of gaining more insight into hydrogen-bonding interactions involving 5-H₂SSA and pyridine derivatives, we report here the molecular and supramolecular structure of the title compound.

In the asymmetric unit of title compound (I), contains one 5-HSSA⁻ and one 4-CPY⁺ ion. Similar to the analogous organic adducts reported (Meng *et al.*, 2007), the H atom is transferred from the sulfonic acid group to the pyridine N atom forming an 1:1 organic salt.

In the crystal structure, the component ions are linked by a combination of O—H \cdots O, N—H \cdots O and C—H \cdots O hydrogen bonds (Table 1), forming a three-dimensional network (Fig.2). An analysis using *PLATON* (Spek, 2003), showed that there are no other interactions (*e.g.* C—H \cdots π and π - π) observed in the crystal structure.

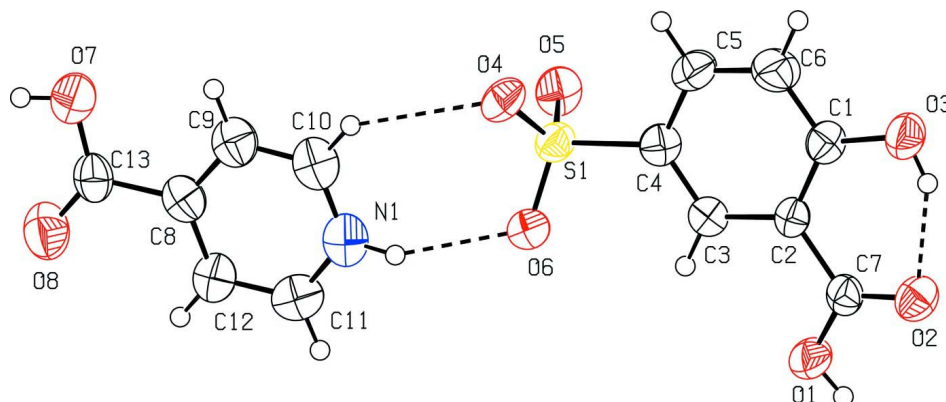
S2. Experimental

All reagents and solvents were used as obtained without further purification. Equivalent molar amount of 4-carboxypyridine and 5-sulfosalicylic acid dihydrate were dissolved in 95% methanol (20 ml). The mixture was stirred for 10 minutes at 330 K and then filtered. Colorless needles of (I) suitable for single-crystal X-ray diffraction analysis grew at the bottom of the vessel in one week after slow evaporation of the solution.

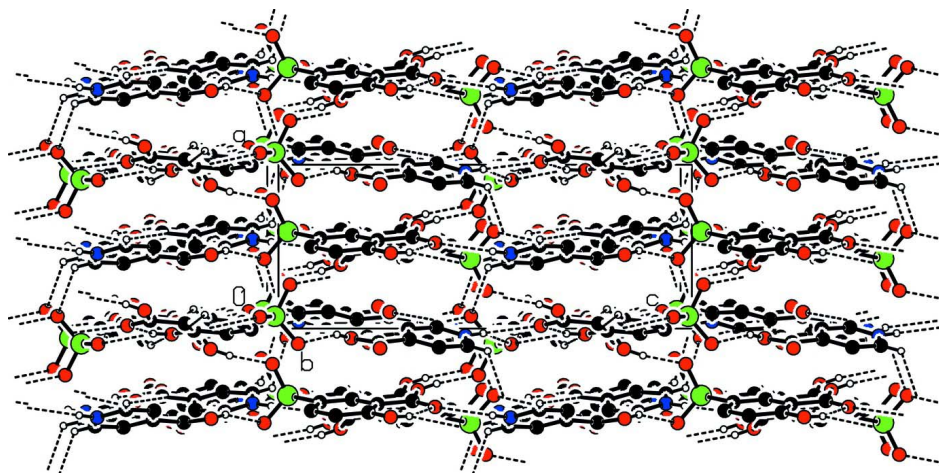
S3. Refinement

Owing to the poor quality the crystal selected for diffraction, conventional least squares refinement of the structural model gave $R_1 = 0.072$. We attempted to select better crystals for diffraction, but none were an improvement. The title compound is racemic in solution but spontaneously resolved upon crystallization. The absolute configuration of the molecules in the crystal selected was readily determined and the configuration has no chemical significance.

H atoms bonded to C atoms were positioned geometrically with C—H = 0.93 Å (aromatic) and refined in a riding mode [$U_{\text{iso}}(\text{H}) = 1.2U_{\text{eq}}(\text{aromatic C})$]. H atoms bonded to N and O atoms were found in Fourier difference maps and refined with the constraints of N—H = 0.86 (2) Å, O—H = 0.82 (2) Å, and $U_{\text{iso}}(\text{H}) = 1.2U_{\text{eq}}(\text{N})$ or $1.5U_{\text{eq}}(\text{O})$.

**Figure 1**

Molecular structure of (I), showing the atom-numbering scheme. Displacement ellipsoids are drawn at the 50% probability level. H-bonds are shown as dashed lines.

**Figure 2**

Part of the crystal structure of (I), showing the formation of the three-dimensional framework structure. Hydrogen bonds are shown as dashed lines. For the sake of clarity, H atoms not involved in the motif have been omitted from the drawing.

4-Carboxypyridinium 3-carboxy-4-hydroxybenzenesulfonate

Crystal data

$C_6H_6NO_2^+ \cdot C_7H_5O_6S^-$

$M_r = 341.29$

Orthorhombic, $P2_12_12_1$

Hall symbol: P 2ac 2ab

$a = 6.6358 (6) \text{ \AA}$

$b = 13.0514 (12) \text{ \AA}$

$c = 16.7415 (14) \text{ \AA}$

$V = 1449.9 (2) \text{ \AA}^3$

$Z = 4$

$F(000) = 704$

$D_x = 1.563 \text{ Mg m}^{-3}$

Mo $K\alpha$ radiation, $\lambda = 0.71073 \text{ \AA}$

Cell parameters from 950 reflections

$\theta = 3.1\text{--}19.7^\circ$

$\mu = 0.27 \text{ mm}^{-1}$

$T = 298 \text{ K}$

Needle, colorless

$0.30 \times 0.04 \times 0.02 \text{ mm}$

Data collection

Bruker SMART APEX CCD area-detector
diffractometer
Radiation source: fine focus sealed Siemens Mo
tube
Graphite monochromator
0.3° wide ω exposures scans
13287 measured reflections

2545 independent reflections
1522 reflections with $I > 2\sigma(I)$
 $R_{\text{int}} = 0.143$
 $\theta_{\text{max}} = 25.0^\circ$, $\theta_{\text{min}} = 2.9^\circ$
 $h = -7 \rightarrow 7$
 $k = -15 \rightarrow 15$
 $l = -19 \rightarrow 18$

Refinement

Refinement on F^2
Least-squares matrix: full
 $R[F^2 > 2\sigma(F^2)] = 0.072$
 $wR(F^2) = 0.168$
 $S = 0.97$
2545 reflections
220 parameters
5 restraints
Primary atom site location: structure-invariant
direct methods
Secondary atom site location: difference Fourier
map

Hydrogen site location: inferred from
neighbouring sites
H atoms treated by a mixture of independent
and constrained refinement
 $w = 1/[\sigma^2(F_o^2) + (0.0554P)^2]$
where $P = (F_o^2 + 2F_c^2)/3$
 $(\Delta/\sigma)_{\text{max}} < 0.001$
 $\Delta\rho_{\text{max}} = 0.45 \text{ e } \text{Å}^{-3}$
 $\Delta\rho_{\text{min}} = -0.37 \text{ e } \text{Å}^{-3}$
Absolute structure: Flack (1983), 1056 Friedel
pairs
Absolute structure parameter: $-0.1 (2)$

Special details

Geometry. All e.s.d.'s (except the e.s.d. in the dihedral angle between two l.s. planes) are estimated using the full covariance matrix. The cell e.s.d.'s are taken into account individually in the estimation of e.s.d.'s in distances, angles and torsion angles; correlations between e.s.d.'s in cell parameters are only used when they are defined by crystal symmetry. An approximate (isotropic) treatment of cell e.s.d.'s is used for estimating e.s.d.'s involving l.s. planes.

Refinement. Refinement of F^2 against ALL reflections. The weighted R -factor wR and goodness of fit S are based on F^2 , conventional R -factors R are based on F , with F set to zero for negative F^2 . The threshold expression of $F^2 > \sigma(F^2)$ is used only for calculating R -factors(gt) *etc.* and is not relevant to the choice of reflections for refinement. R -factors based on F^2 are statistically about twice as large as those based on F , and R -factors based on ALL data will be even larger.

Fractional atomic coordinates and isotropic or equivalent isotropic displacement parameters (Å^2)

	<i>x</i>	<i>y</i>	<i>z</i>	$U_{\text{iso}}^*/U_{\text{eq}}$
C1	0.5027 (9)	0.7437 (4)	0.2884 (4)	0.0404 (15)
C2	0.4566 (8)	0.6435 (4)	0.2645 (3)	0.0334 (13)
C3	0.4291 (9)	0.5677 (4)	0.3235 (3)	0.0362 (13)
H3	0.3988	0.5009	0.3082	0.043*
C4	0.4464 (9)	0.5908 (4)	0.4022 (3)	0.0410 (15)
C5	0.4945 (12)	0.6910 (4)	0.4256 (4)	0.0563 (18)
H5	0.5083	0.7069	0.4794	0.068*
C6	0.5212 (12)	0.7655 (4)	0.3689 (4)	0.062 (2)
H6	0.5524	0.8319	0.3848	0.074*
C7	0.4373 (9)	0.6190 (4)	0.1788 (3)	0.0393 (14)
O1	0.3740 (8)	0.5263 (3)	0.1634 (2)	0.0556 (12)
H1	0.335 (11)	0.517 (5)	0.1176 (19)	0.083*
O2	0.4714 (6)	0.6826 (3)	0.1260 (2)	0.0496 (11)
O3	0.5284 (8)	0.8216 (3)	0.2371 (2)	0.0554 (13)
H3A	0.524 (13)	0.799 (5)	0.1914 (18)	0.083*

O4	0.5754 (7)	0.5082 (3)	0.5343 (2)	0.0524 (11)
O5	0.2154 (6)	0.5225 (3)	0.5150 (2)	0.0519 (11)
O6	0.4088 (7)	0.3976 (2)	0.4391 (2)	0.0474 (10)
S1	0.4079 (2)	0.49700 (10)	0.47738 (8)	0.0424 (4)
C8	0.4478 (9)	0.1284 (4)	0.6933 (4)	0.0466 (15)
C9	0.5068 (10)	0.2291 (5)	0.6931 (4)	0.0551 (18)
H9	0.5412	0.2611	0.7409	0.066*
C10	0.5153 (10)	0.2820 (5)	0.6234 (4)	0.0538 (17)
H10	0.5557	0.3503	0.6230	0.065*
C11	0.4091 (10)	0.1365 (5)	0.5529 (4)	0.0531 (16)
H11	0.3762	0.1060	0.5045	0.064*
C12	0.4005 (9)	0.0804 (4)	0.6229 (4)	0.0474 (15)
H12	0.3635	0.0117	0.6223	0.057*
C13	0.4301 (10)	0.0658 (5)	0.7697 (4)	0.0491 (16)
N1	0.4651 (8)	0.2351 (4)	0.5553 (4)	0.0533 (14)
H1A	0.480 (8)	0.267 (4)	0.511 (2)	0.064*
O7	0.4546 (8)	0.1208 (3)	0.8342 (3)	0.0669 (14)
H7	0.478 (13)	0.078 (4)	0.870 (3)	0.100*
O8	0.3980 (8)	-0.0253 (3)	0.7684 (3)	0.0715 (14)

Atomic displacement parameters (\AA^2)

	U^{11}	U^{22}	U^{33}	U^{12}	U^{13}	U^{23}
C1	0.037 (4)	0.045 (3)	0.040 (3)	-0.008 (3)	0.006 (3)	0.005 (3)
C2	0.025 (3)	0.041 (3)	0.035 (3)	0.003 (2)	0.000 (3)	0.004 (2)
C3	0.028 (3)	0.039 (3)	0.042 (4)	-0.002 (2)	0.002 (3)	0.000 (3)
C4	0.034 (4)	0.046 (3)	0.043 (4)	-0.003 (3)	0.007 (3)	0.002 (3)
C5	0.077 (5)	0.054 (3)	0.038 (3)	-0.006 (4)	-0.006 (4)	-0.005 (3)
C6	0.085 (6)	0.043 (3)	0.057 (4)	-0.017 (4)	0.009 (4)	-0.003 (3)
C7	0.035 (4)	0.043 (3)	0.040 (4)	0.009 (3)	0.001 (3)	0.004 (3)
O1	0.079 (3)	0.047 (2)	0.041 (3)	-0.011 (2)	-0.012 (3)	-0.003 (2)
O2	0.048 (3)	0.057 (2)	0.043 (2)	-0.007 (2)	0.002 (2)	0.003 (2)
O3	0.075 (4)	0.050 (2)	0.042 (2)	-0.010 (2)	-0.003 (3)	0.008 (2)
O4	0.054 (3)	0.066 (2)	0.037 (2)	-0.001 (2)	-0.012 (2)	-0.003 (2)
O5	0.040 (3)	0.064 (3)	0.052 (3)	0.002 (2)	0.021 (2)	0.008 (2)
O6	0.054 (3)	0.047 (2)	0.042 (2)	0.000 (2)	0.000 (3)	-0.0028 (18)
S1	0.0461 (9)	0.0454 (8)	0.0356 (8)	-0.0018 (8)	0.0026 (7)	0.0006 (7)
C8	0.028 (4)	0.051 (3)	0.061 (4)	0.008 (3)	-0.002 (3)	0.002 (3)
C9	0.044 (4)	0.059 (4)	0.063 (5)	0.002 (3)	-0.006 (4)	0.003 (3)
C10	0.031 (4)	0.060 (4)	0.070 (5)	0.000 (3)	-0.001 (4)	0.007 (4)
C11	0.030 (4)	0.070 (4)	0.059 (4)	0.001 (3)	0.002 (4)	-0.009 (3)
C12	0.029 (3)	0.060 (4)	0.053 (4)	-0.001 (3)	-0.003 (4)	0.006 (4)
C13	0.039 (4)	0.053 (4)	0.056 (4)	0.010 (3)	-0.006 (4)	0.009 (3)
N1	0.033 (3)	0.065 (4)	0.062 (4)	0.003 (3)	0.008 (3)	0.011 (3)
O7	0.081 (4)	0.064 (3)	0.055 (3)	-0.001 (3)	-0.007 (3)	0.006 (2)
O8	0.077 (4)	0.062 (3)	0.075 (3)	-0.008 (3)	-0.011 (3)	0.015 (2)

Geometric parameters (Å, °)

C1—O3	1.343 (6)	O5—S1	1.462 (4)
C1—C6	1.382 (8)	O6—S1	1.446 (3)
C1—C2	1.401 (7)	C8—C12	1.370 (8)
C2—C3	1.409 (7)	C8—C9	1.371 (8)
C2—C7	1.477 (7)	C8—C13	1.523 (8)
C3—C4	1.357 (7)	C9—C10	1.359 (8)
C3—H3	0.9300	C9—H9	0.9300
C4—C5	1.401 (7)	C10—N1	1.336 (8)
C4—S1	1.775 (5)	C10—H10	0.9300
C5—C6	1.371 (8)	C11—N1	1.340 (7)
C5—H5	0.9300	C11—C12	1.383 (8)
C6—H6	0.9300	C11—H11	0.9300
C7—O2	1.233 (6)	C12—H12	0.9300
C7—O1	1.306 (6)	C13—O8	1.209 (7)
O1—H1	0.82 (2)	C13—O7	1.306 (7)
O3—H3A	0.82 (2)	N1—H1A	0.85 (2)
O4—S1	1.472 (4)	O7—H7	0.83 (5)
O3—C1—C6	117.1 (5)	O6—S1—C4	107.7 (2)
O3—C1—C2	123.5 (5)	O5—S1—C4	105.9 (3)
C6—C1—C2	119.3 (5)	O4—S1—C4	106.4 (3)
C1—C2—C3	118.9 (5)	C12—C8—C9	120.1 (6)
C1—C2—C7	119.9 (5)	C12—C8—C13	117.4 (5)
C3—C2—C7	121.2 (5)	C9—C8—C13	122.5 (6)
C4—C3—C2	120.8 (5)	C10—C9—C8	120.1 (6)
C4—C3—H3	119.6	C10—C9—H9	120.0
C2—C3—H3	119.6	C8—C9—H9	120.0
C3—C4—C5	119.9 (5)	N1—C10—C9	119.3 (6)
C3—C4—S1	121.5 (4)	N1—C10—H10	120.3
C5—C4—S1	118.6 (4)	C9—C10—H10	120.3
C6—C5—C4	119.9 (6)	N1—C11—C12	119.7 (6)
C6—C5—H5	120.1	N1—C11—H11	120.1
C4—C5—H5	120.1	C12—C11—H11	120.1
C5—C6—C1	121.1 (5)	C8—C12—C11	118.5 (5)
C5—C6—H6	119.4	C8—C12—H12	120.8
C1—C6—H6	119.4	C11—C12—H12	120.8
O2—C7—O1	122.8 (5)	O8—C13—O7	125.3 (6)
O2—C7—C2	122.3 (5)	O8—C13—C8	121.7 (6)
O1—C7—C2	114.8 (5)	O7—C13—C8	113.0 (5)
C7—O1—H1	115 (5)	C10—N1—C11	122.3 (6)
C1—O3—H3A	109 (5)	C10—N1—H1A	119 (4)
O6—S1—O5	113.5 (3)	C11—N1—H1A	119 (4)
O6—S1—O4	111.9 (2)	C13—O7—H7	105 (5)
O5—S1—O4	111.0 (2)		

Hydrogen-bond geometry (Å, °)

<i>D</i> —H \cdots <i>A</i>	<i>D</i> —H	H \cdots <i>A</i>	<i>D</i> \cdots <i>A</i>	<i>D</i> —H \cdots <i>A</i>
O1—H1 \cdots O5 ⁱ	0.82 (2)	1.82 (2)	2.632 (5)	170 (7)
N1—H1A \cdots O2 ⁱⁱ	0.85 (2)	2.57 (5)	3.140 (7)	125 (5)
C3—H3 \cdots O3 ⁱⁱ	0.93	2.51	3.379 (7)	156
O3—H3A \cdots O6 ⁱⁱⁱ	0.82 (2)	2.57 (5)	3.140 (5)	127 (6)
O7—H7 \cdots O4 ^{iv}	0.83 (5)	1.87 (4)	2.654 (5)	155 (8)
C10—H10 \cdots O8 ^v	0.93	2.46	3.152 (8)	132
C11—H11 \cdots O4 ^{vi}	0.93	2.57	3.257 (7)	131
N1—H1A \cdots O6	0.85 (2)	2.14 (3)	2.902 (6)	149 (5)
O3—H3A \cdots O2	0.82 (2)	1.90 (4)	2.626 (5)	146 (6)
C10—H10 \cdots O4	0.93	2.54	3.331 (7)	143

Symmetry codes: (i) $-x+1/2, -y+1, z-1/2$; (ii) $-x+1, y-1/2, -z+1/2$; (iii) $-x+1, y+1/2, -z+1/2$; (iv) $-x+1, y-1/2, -z+3/2$; (v) $-x+1, y+1/2, -z+3/2$; (vi) $x-1/2, -y+1/2, -z+1$.