

Acta Crystallographica Section E

Structure Reports

Online

ISSN 1600-5368

Ethyl 4-(*tert*-butylamino)-3-nitrobenzoateSiti Marina Mohd. Maidin,^a Aisyah Saad Abdul Rahim,^{a‡} Hasnah Osman,^b Reza Kia^c and Hoong-Kun Fun^{c*}^aSchool of Pharmaceutical Sciences, Universiti Sains Malaysia, 11800 USM, Penang, Malaysia, ^bSchool of Chemical Sciences, Universiti Sains Malaysia, 11800 USM, Penang, Malaysia, and ^cX-ray Crystallography Unit, School of Physics, Universiti Sains Malaysia, 11800 USM, Penang, Malaysia

Correspondence e-mail: hkfun@usm.my

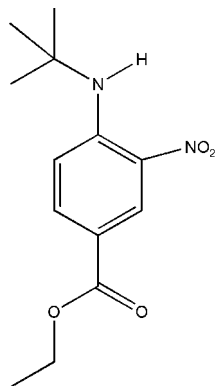
Received 11 July 2008; accepted 15 July 2008

Key indicators: single-crystal X-ray study; $T = 100$ K; mean $\sigma(\text{C}-\text{C}) = 0.002$ Å; R factor = 0.047; wR factor = 0.134; data-to-parameter ratio = 23.2.

In the title compound, $\text{C}_{13}\text{H}_{18}\text{N}_2\text{O}_4$, intramolecular $\text{N}-\text{H}\cdots\text{O}$, $\text{N}-\text{H}\cdots\text{N}$ and $\text{C}-\text{H}\cdots\text{O}$ ($\times 3$) hydrogen bonds generate $S(6)$ and $S(5)$ ring motifs. There are two crystallographically independent molecules (A and B) in the asymmetric unit. The nitro group is coplanar with the benzene ring, with $\text{O}-\text{N}-\text{C}-\text{C}$ torsion angles of -0.33 (13) and 0.93 (14) $^\circ$ in molecules A and B , respectively. In the crystal structure, neighbouring molecules are linked together by intermolecular $\text{C}-\text{H}\cdots\text{O}$ hydrogen bonds. In addition, the crystal structure is stabilized by $\pi-\pi$ interactions with centroid-centroid distances ranging from 3.7853 (6) to 3.8625 (6) Å.

Related literature

For literature on hydrogen-bond motifs, see: Bernstein *et al.* (1995). For values of bond lengths, see: Allen *et al.* (1987). For related literature, see, for example: Göker *et al.* (1998); Anderson (2005); Kakei *et al.* (1993).



‡ Additional correspondence author, e-mail: aisyah@usm.my.

Experimental

Crystal data

$\text{C}_{13}\text{H}_{18}\text{N}_2\text{O}_4$
 $M_r = 266.29$
 Monoclinic, $P2_1/c$
 $a = 16.0471$ (5) Å
 $b = 6.6417$ (2) Å
 $c = 30.0180$ (9) Å
 $\beta = 121.688$ (2) $^\circ$
 $V = 2722.37$ (14) Å³
 $Z = 8$
 Mo $K\alpha$ radiation
 $\mu = 0.10$ mm⁻¹
 $T = 100.0$ (1) K
 $0.51 \times 0.43 \times 0.17$ mm

Data collection

Bruker SMART APEXII CCD
 area-detector diffractometer
 Absorption correction: multi-scan
 (SADABS; Bruker, 2005)
 $T_{\min} = 0.879$, $T_{\max} = 0.984$
 63326 measured reflections
 8141 independent reflections
 6368 reflections with $I > 2\sigma(I)$
 $R_{\text{int}} = 0.033$

Refinement

$R[F^2 > 2\sigma(F^2)] = 0.046$
 $wR(F^2) = 0.133$
 $S = 1.04$
 8141 reflections
 351 parameters
 H-atom parameters constrained
 $\Delta\rho_{\max} = 0.53$ e Å⁻³
 $\Delta\rho_{\min} = -0.24$ e Å⁻³

Table 1

Selected centroid-centroid distances (Å).

$Cg1$ and $Cg2$ are the centroids of the $C1A-C6A$ and $C1B-C6B$ rings, respectively.

$Cg1\cdots Cg2^i$	3.7853 (6)	$Cg1\cdots Cg2^{ii}$	3.8625 (6)
-------------------	------------	----------------------	------------

Symmetry codes: (i) $x, -y - \frac{1}{2}, z - \frac{1}{2}$; (ii) $x, -y + \frac{1}{2}, z - \frac{1}{2}$.

Table 2

Hydrogen-bond geometry (Å, $^\circ$).

$D-H\cdots A$	$D-H$	$H\cdots A$	$D\cdots A$	$D-H\cdots A$
$N2A-H2NA\cdots O4A$	0.86	1.93	2.6299 (15)	138
$N2A-H2NA\cdots N1A$	0.86	2.54	2.9361 (15)	109
$N2B-H2NB\cdots O4B$	0.87	1.95	2.6355 (15)	134
$N2B-H2NB\cdots N1B$	0.87	2.58	2.9419 (15)	106
$C1A-H1A\cdots O3A$	0.95	2.31	2.6522 (16)	100
$C1B-H1B\cdots O3B$	0.95	2.31	2.6498 (16)	100
$C4A-H4A\cdots O3B^{iii}$	0.95	2.50	3.4124 (17)	160
$C4B-H4B\cdots O3A^{iv}$	0.95	2.42	3.2566 (18)	147
$C5A-H5A\cdots O1A$	0.95	2.41	2.7326 (13)	100
$C11A-H11A\cdots O2B^v$	0.98	2.55	3.4714 (17)	157
$C11B-H11B\cdots O2A^{ii}$	0.98	2.52	3.4446 (17)	158
$C13B-H13D\cdots O2A^{vi}$	0.98	2.60	3.5071 (17)	154

Symmetry codes: (ii) $x, -y + \frac{1}{2}, z - \frac{1}{2}$; (iii) $-x + 2, -y + 1, -z + 1$; (iv) $-x + 1, -y + 1, -z + 1$; (v) $x, -y + \frac{1}{2}, z + \frac{1}{2}$; (vi) $x, -y + \frac{3}{2}, z - \frac{1}{2}$.

Data collection: APEX2 (Bruker, 2005); cell refinement: APEX2; data reduction: SAINT (Bruker, 2005); program(s) used to solve structure: SHELXTL (Sheldrick, 2008); program(s) used to refine structure: SHELXTL; molecular graphics: SHELXTL; software used to prepare material for publication: SHELXTL and PLATON (Spek, 2003).

We are grateful to the Malaysian Government and Universiti Sains Malaysia (USM) for financial support given under the USM Research University funding (1001/PFAR-MASI/815026). HKF and RK thank the Malaysian Government and Universiti Sains Malaysia for the Science Fund grant No. 305/PFIZIK/ 613312. RK thanks Universiti Sains Malaysia for a postdoctoral research fellowship.

Supplementary data and figures for this paper are available from the IUCr electronic archives (Reference: AT2594).

References

- Allen, F. H., Kennard, O., Watson, D. G., Brammer, L., Orpen, A. G. & Taylor, R. (1987). *J. Chem. Soc. Perkin Trans. 2*, pp. S1–19.
- Anderson, J. B. (2005). *Nat. Rev. Microbiol.* **3**, 547–556.
- Bernstein, J., Davis, R. E., Shimoni, L. & Chang, N.-L. (1995). *Angew. Chem. Int. Ed. Engl.* **34**, 1555–1573.
- Bruker (2005). *APEX2*, *SAINT* and *SADABS*. Bruker AXS Inc., Madison, Wisconsin, USA.
- Göker, H., Tunçbilek, M., Ayhan, G. & Altanlar, N. (1998). *Farmaco*, **53**, 415–420.
- Takei, N., Ichinose, M., Tsukada, S., Tatematsu, M., Tezuka, N., Yahagi, N., Matsushima, M., Miki, K., Kurokawa, K., Takahashi, K. & Fukamachi, H. (1993). *Biochem. Biophys. Res. Commun.* **195**, 997–1004.
- Sheldrick, G. M. (2008). *Acta Cryst. A* **64**, 112–122.
- Spek, A. L. (2003). *J. Appl. Cryst.* **36**, 7–13.

supporting information

Acta Cryst. (2008). E64, o1550–o1551 [doi:10.1107/S160053680802206X]

Ethyl 4-(*tert*-butylamino)-3-nitrobenzoate

Siti Marina Mohd. Maidin, Aisyah Saad Abdul Rahim, Hasnah Osman, Reza Kia and Hoong-Kun Fun

S1. Comment

As a part of our ongoing studies on new nitro benzoic acid derivatives, we have synthesized the title compound (I) employing a modified protocol of previous procedure (Göker *et al.*, 1998). The nitro benzoic acid intermediates are a convenient starting material for the synthesis of heterocycles targeting important biological processes, *e.g.* antifungal (Fluconazole) (Anderson, 2005) and proton pump inhibitor (Omeprazole) (Kakei *et al.*, 1993). The crystal structure of the *tert*-butylamino functionalized nitro benzoic acid (I) has been determined, and herein, we present a full report on its crystal structure.

In the title compound (I) (Fig. 1), intramolecular N—H \cdots O (x 2), N—H \cdots N (x 2), and C—H \cdots O (x 3) hydrogen bonds (Table 2) generate $S(6)$ and $S(5)$ ring motifs, respectively (Bernstein *et al.*, 1995). There are two crystallographically independent molecules, A and B in the asymmetric unit of the title compound. The nitro group is coplanar with the benzene ring with torsion angle of -0.33 (13) and 0.93 (14) $^\circ$ in the molecule A and B, respectively. In the crystal structure neighbouring molecules are linked together by intermolecular C—H \cdots O hydrogen bonds (Table 1). In the crystal packing (Table 2 & Fig. 2), molecules are stacked down the b axis, being consolidated by π – π interactions with centroid to centroid distances ranging from 3.7853 (6) – 3.8625 (6) Å.

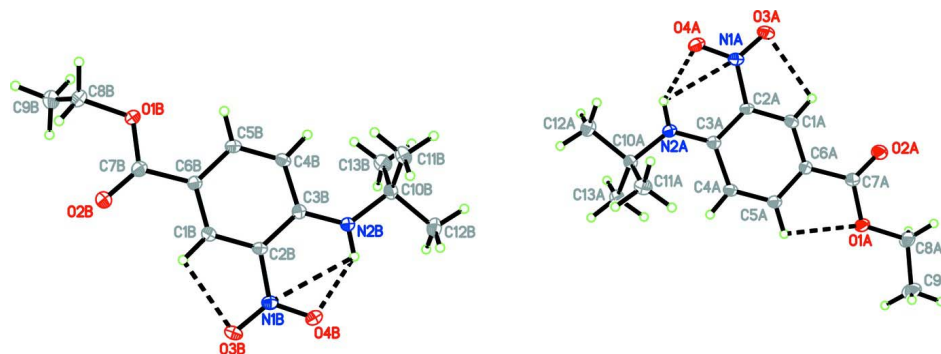
The crystal structure is stabilized by intramolecular N—H \cdots O (x 2), N—H \cdots N (x 2), C—H \cdots O (x 3), and intermolecular C—H \cdots O (x 5) hydrogen bonds and π – π interactions.

S2. Experimental

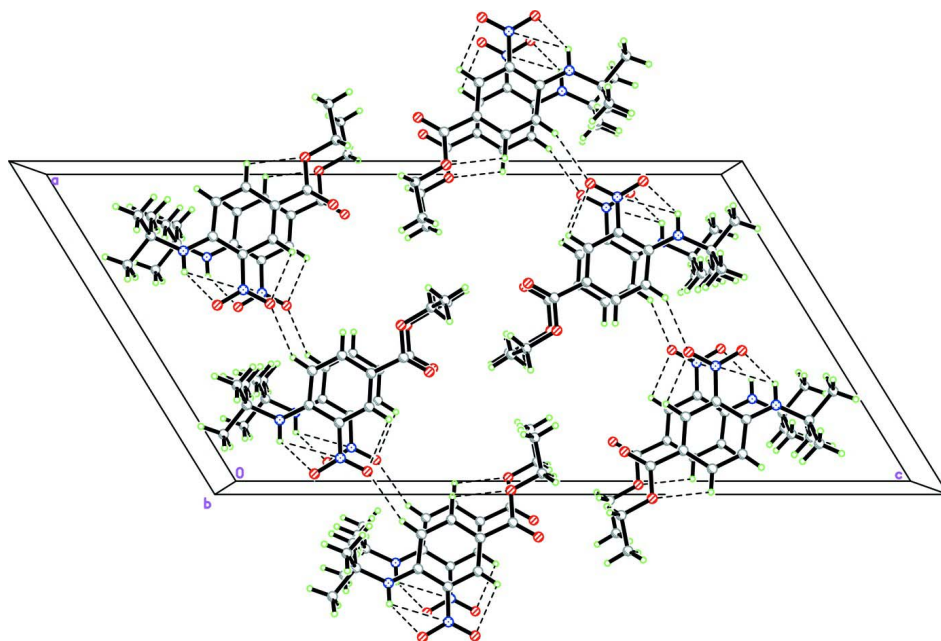
Ethyl 4-fluoro-3-nitrobenzoate (200 mg, 0.93 mmol) was dissolved in dry dichloromethane (10 ml). *N,N*-diisopropylethylamine (DIPEA) (0.20 ml, 1.12 mmol) was added to the stirred mixture. Then, *tert*-butylamine (0.11 ml, 1.03 mmol) was added dropwise using syringe and stirred at room temperature under N₂ overnight. After completion of the reaction, the mixture was washed with 10% NaCO₃ (10 ml). The aqueous layer was washed with dichloromethane (3 x 15 ml). The organic layers were collected and dried over MgSO₄ (anhydrous). The solvent was removed under reduced pressure to yield the crude product. Recrystallisation with hot hexane revealed the title compound (I) as bright yellow crystals.

S3. Refinement

The H-atoms attached to N2A and N2B were located from the difference Fourier map and refined as riding with the parent atom with an isotropic thermal parameter 1.2 times that of the parent atom. The rest of the hydrogen atoms were positioned geometrically [C—H = 0.95–98 Å] and refined using a riding model. A rotating-group model was used for the methyl groups. The highest peak is located 0.63 Å from C6B and the deepest hole is located 0.59 Å from N1A.

**Figure 1**

The molecular structure of the title compound, showing 50% probability displacement ellipsoids and the atomic numbering. Intramolecular hydrogen bonds are drawn as dashed lines.

**Figure 2**

The crystal packing of (I), showing stacking arrangement viewed down the *b*-axis. Intramolecular and intermolecular interactions are drawn as dashed lines.

Ethyl 4-(*tert*-butylamino)-3-nitrobenzoate

Crystal data

$C_{13}H_{18}N_2O_4$

$M_r = 266.29$

Monoclinic, $P2_1/c$

Hall symbol: $-P\ 2_1/c$

$a = 16.0471(5)\ \text{\AA}$

$b = 6.6417(2)\ \text{\AA}$

$c = 30.0180(9)\ \text{\AA}$

$\beta = 121.688(2)^\circ$

$V = 2722.37(14)\ \text{\AA}^3$

$Z = 8$

$F(000) = 1136$

$D_x = 1.299\ \text{Mg m}^{-3}$

Mo $K\alpha$ radiation, $\lambda = 0.71073\ \text{\AA}$

Cell parameters from 9969 reflections

$\theta = 2.5\text{--}30.1^\circ$

$\mu = 0.10\ \text{mm}^{-1}$

$T = 100\ \text{K}$

Plate, yellow

$0.51 \times 0.43 \times 0.17\ \text{mm}$

Data collection

Bruker SMART APEXII CCD area-detector
diffractometer

Radiation source: fine-focus sealed tube

Graphite monochromator

φ and ω scans

Absorption correction: multi-scan
(*SADABS*; Bruker, 2005)

$T_{\min} = 0.879$, $T_{\max} = 0.984$

63326 measured reflections

8141 independent reflections

6368 reflections with $I > 2\sigma(I)$

$R_{\text{int}} = 0.033$

$\theta_{\max} = 30.3^\circ$, $\theta_{\min} = 1.5^\circ$

$h = -21 \rightarrow 22$

$k = -9 \rightarrow 9$

$l = -41 \rightarrow 42$

Refinement

Refinement on F^2

Least-squares matrix: full

$R[F^2 > 2\sigma(F^2)] = 0.047$

$wR(F^2) = 0.133$

$S = 1.04$

8141 reflections

351 parameters

0 restraints

Primary atom site location: structure-invariant
direct methods

Secondary atom site location: difference Fourier
map

Hydrogen site location: inferred from
neighbouring sites

H-atom parameters constrained

$w = 1/[\sigma^2(F_o^2) + (0.0652P)^2 + 0.787P]$

where $P = (F_o^2 + 2F_c^2)/3$

$(\Delta/\sigma)_{\max} = 0.001$

$\Delta\rho_{\max} = 0.53 \text{ e } \text{\AA}^{-3}$

$\Delta\rho_{\min} = -0.24 \text{ e } \text{\AA}^{-3}$

Special details

Experimental. The low-temperature data was collected with the Oxford Cyrosystem Cobra low-temperature attachment.

Geometry. All e.s.d.'s (except the e.s.d. in the dihedral angle between two l.s. planes) are estimated using the full covariance matrix. The cell e.s.d.'s are taken into account individually in the estimation of e.s.d.'s in distances, angles and torsion angles; correlations between e.s.d.'s in cell parameters are only used when they are defined by crystal symmetry. An approximate (isotropic) treatment of cell e.s.d.'s is used for estimating e.s.d.'s involving l.s. planes.

Refinement. Refinement of F^2 against ALL reflections. The weighted R -factor wR and goodness of fit S are based on F^2 , conventional R -factors R are based on F , with F set to zero for negative F^2 . The threshold expression of $F^2 > \sigma(F^2)$ is used only for calculating R -factors(gt) *etc.* and is not relevant to the choice of reflections for refinement. R -factors based on F^2 are statistically about twice as large as those based on F , and R -factors based on ALL data will be even larger.

Fractional atomic coordinates and isotropic or equivalent isotropic displacement parameters (\AA^2)

	x	y	z	$U_{\text{iso}}^*/U_{\text{eq}}$
O1A	1.01188 (6)	0.50707 (13)	0.90700 (3)	0.02027 (18)
O2A	0.87073 (6)	0.53054 (14)	0.90534 (3)	0.02371 (19)
O3A	0.57249 (6)	0.54152 (13)	0.73478 (3)	0.02243 (18)
O4A	0.56803 (6)	0.54680 (13)	0.66152 (3)	0.02250 (18)
N1A	0.61441 (6)	0.54228 (13)	0.71013 (4)	0.01589 (18)
N2A	0.73120 (6)	0.54415 (13)	0.66080 (3)	0.01583 (18)
H2NA	0.6682	0.5497	0.6444	0.019*
C1A	0.76647 (7)	0.53258 (15)	0.79329 (4)	0.0143 (2)
H1A	0.7281	0.5335	0.8089	0.017*
C2A	0.72036 (7)	0.53705 (15)	0.73898 (4)	0.01349 (19)
C3A	0.77441 (7)	0.53716 (14)	0.71324 (4)	0.01347 (19)
C4A	0.87825 (7)	0.52932 (15)	0.74731 (4)	0.0151 (2)
H4A	0.9180	0.5271	0.7325	0.018*
C5A	0.92253 (7)	0.52490 (15)	0.80055 (4)	0.0149 (2)
H5A	0.9920	0.5204	0.8217	0.018*

C6A	0.86747 (7)	0.52682 (15)	0.82473 (4)	0.0142 (2)
C7A	0.91408 (8)	0.52224 (16)	0.88226 (4)	0.0159 (2)
C8A	1.06291 (8)	0.5008 (2)	0.96363 (4)	0.0252 (3)
H8A	1.0412	0.3828	0.9751	0.030*
H8B	1.0489	0.6242	0.9771	0.030*
C9A	1.17025 (9)	0.4861 (2)	0.98412 (5)	0.0347 (3)
H9A	1.2069	0.4877	1.0225	0.052*
H9B	1.1904	0.6006	0.9713	0.052*
H9C	1.1837	0.3603	0.9720	0.052*
C10A	0.77667 (8)	0.54745 (16)	0.62878 (4)	0.0163 (2)
C11A	0.83246 (8)	0.35165 (17)	0.63510 (4)	0.0203 (2)
H11A	0.7877	0.2370	0.6254	0.030*
H11B	0.8861	0.3373	0.6716	0.030*
H11C	0.8593	0.3555	0.6124	0.030*
C12A	0.68959 (9)	0.56150 (19)	0.57218 (4)	0.0233 (2)
H12A	0.6458	0.4465	0.5647	0.035*
H12B	0.7136	0.5600	0.5481	0.035*
H12C	0.6537	0.6869	0.5676	0.035*
C13A	0.84047 (8)	0.73502 (17)	0.64034 (4)	0.0195 (2)
H13A	0.8927	0.7359	0.6774	0.029*
H13B	0.8000	0.8560	0.6324	0.029*
H13C	0.8695	0.7331	0.6186	0.029*
O1B	0.49200 (5)	0.43211 (13)	0.10402 (3)	0.02139 (18)
O2B	0.63293 (6)	0.45058 (13)	0.10484 (3)	0.02286 (18)
O3B	0.93204 (6)	0.47400 (13)	0.27341 (3)	0.02111 (18)
O4B	0.93898 (6)	0.47557 (13)	0.34743 (3)	0.02151 (18)
N1B	0.89147 (6)	0.47252 (13)	0.29872 (4)	0.01529 (18)
N2B	0.77682 (6)	0.47199 (14)	0.34950 (3)	0.01565 (18)
H2NB	0.8407	0.4767	0.3671	0.019*
C1B	0.73817 (7)	0.46115 (15)	0.21633 (4)	0.01401 (19)
H1B	0.7757	0.4608	0.2002	0.017*
C2B	0.78566 (7)	0.46722 (15)	0.27069 (4)	0.01293 (19)
C3B	0.73273 (7)	0.46737 (15)	0.29702 (4)	0.01340 (19)
C4B	0.62889 (8)	0.46322 (16)	0.26366 (4)	0.0157 (2)
H4B	0.5900	0.4645	0.2790	0.019*
C5B	0.58317 (7)	0.45740 (15)	0.21029 (4)	0.0154 (2)
H5B	0.5137	0.4545	0.1895	0.019*
C6B	0.63721 (7)	0.45564 (15)	0.18553 (4)	0.01401 (19)
C7B	0.58976 (8)	0.44669 (16)	0.12800 (4)	0.0168 (2)
C8B	0.43816 (8)	0.4179 (2)	0.04737 (4)	0.0260 (3)
H8C	0.3751	0.3484	0.0350	0.031*
H8D	0.4762	0.3370	0.0365	0.031*
C9B	0.41883 (9)	0.6226 (2)	0.02271 (5)	0.0302 (3)
H9D	0.3804	0.6089	-0.0155	0.045*
H9E	0.4812	0.6888	0.0335	0.045*
H9F	0.3822	0.7038	0.0340	0.045*
C10B	0.73206 (8)	0.46992 (16)	0.38189 (4)	0.0172 (2)
C11B	0.67381 (8)	0.27595 (17)	0.37340 (4)	0.0217 (2)

H11D	0.6189	0.2698	0.3370	0.032*
H11E	0.6487	0.2747	0.3969	0.032*
H11F	0.7166	0.1593	0.3809	0.032*
C12B	0.81999 (9)	0.47351 (19)	0.43837 (4)	0.0246 (2)
H12D	0.8582	0.5964	0.4441	0.037*
H12E	0.8613	0.3555	0.4445	0.037*
H12F	0.7966	0.4710	0.4627	0.037*
C13B	0.66997 (8)	0.65807 (18)	0.37269 (5)	0.0222 (2)
H13D	0.7108	0.7784	0.3806	0.033*
H13E	0.6433	0.6541	0.3955	0.033*
H13F	0.6160	0.6623	0.3360	0.033*

Atomic displacement parameters (Å²)

	U^{11}	U^{22}	U^{33}	U^{12}	U^{13}	U^{23}
O1A	0.0132 (3)	0.0327 (5)	0.0134 (4)	0.0004 (3)	0.0059 (3)	-0.0014 (3)
O2A	0.0181 (4)	0.0365 (5)	0.0190 (4)	0.0000 (3)	0.0114 (3)	-0.0013 (3)
O3A	0.0154 (4)	0.0298 (5)	0.0260 (4)	0.0006 (3)	0.0135 (3)	0.0003 (3)
O4A	0.0136 (4)	0.0309 (5)	0.0186 (4)	0.0002 (3)	0.0055 (3)	-0.0002 (3)
N1A	0.0126 (4)	0.0142 (4)	0.0205 (4)	-0.0004 (3)	0.0084 (3)	-0.0004 (3)
N2A	0.0120 (4)	0.0192 (4)	0.0151 (4)	0.0004 (3)	0.0062 (3)	0.0003 (3)
C1A	0.0149 (5)	0.0111 (4)	0.0189 (5)	-0.0006 (3)	0.0104 (4)	-0.0004 (4)
C2A	0.0102 (4)	0.0119 (5)	0.0175 (5)	0.0002 (3)	0.0068 (4)	0.0002 (4)
C3A	0.0135 (4)	0.0099 (4)	0.0168 (5)	-0.0006 (3)	0.0078 (4)	-0.0003 (3)
C4A	0.0127 (4)	0.0155 (5)	0.0182 (5)	0.0003 (4)	0.0088 (4)	0.0005 (4)
C5A	0.0124 (4)	0.0145 (5)	0.0175 (5)	0.0003 (4)	0.0076 (4)	0.0006 (4)
C6A	0.0147 (5)	0.0131 (5)	0.0148 (5)	-0.0004 (4)	0.0077 (4)	-0.0005 (4)
C7A	0.0140 (5)	0.0160 (5)	0.0170 (5)	-0.0009 (4)	0.0075 (4)	-0.0013 (4)
C8A	0.0188 (5)	0.0421 (7)	0.0122 (5)	0.0004 (5)	0.0065 (4)	-0.0021 (5)
C9A	0.0184 (6)	0.0630 (10)	0.0180 (6)	0.0030 (6)	0.0063 (5)	-0.0027 (6)
C10A	0.0161 (5)	0.0183 (5)	0.0154 (5)	-0.0005 (4)	0.0088 (4)	0.0001 (4)
C11A	0.0208 (5)	0.0181 (5)	0.0240 (5)	-0.0002 (4)	0.0131 (4)	-0.0028 (4)
C12A	0.0212 (5)	0.0303 (6)	0.0157 (5)	-0.0009 (5)	0.0078 (4)	-0.0005 (4)
C13A	0.0205 (5)	0.0190 (5)	0.0203 (5)	-0.0011 (4)	0.0116 (4)	0.0018 (4)
O1B	0.0133 (4)	0.0343 (5)	0.0138 (4)	-0.0022 (3)	0.0053 (3)	0.0013 (3)
O2B	0.0181 (4)	0.0339 (5)	0.0178 (4)	0.0012 (3)	0.0102 (3)	-0.0004 (3)
O3B	0.0150 (4)	0.0280 (4)	0.0238 (4)	0.0003 (3)	0.0127 (3)	0.0009 (3)
O4B	0.0136 (4)	0.0302 (5)	0.0164 (4)	0.0002 (3)	0.0049 (3)	0.0004 (3)
N1B	0.0135 (4)	0.0134 (4)	0.0186 (4)	0.0001 (3)	0.0081 (3)	0.0002 (3)
N2B	0.0129 (4)	0.0195 (4)	0.0143 (4)	0.0001 (3)	0.0070 (3)	0.0001 (3)
C1B	0.0144 (4)	0.0125 (5)	0.0168 (5)	0.0004 (3)	0.0093 (4)	0.0006 (4)
C2B	0.0108 (4)	0.0113 (4)	0.0166 (5)	0.0003 (3)	0.0072 (4)	0.0007 (3)
C3B	0.0147 (5)	0.0101 (4)	0.0151 (5)	0.0004 (3)	0.0077 (4)	0.0010 (3)
C4B	0.0137 (4)	0.0173 (5)	0.0185 (5)	0.0004 (4)	0.0100 (4)	0.0005 (4)
C5B	0.0121 (4)	0.0151 (5)	0.0185 (5)	0.0000 (4)	0.0076 (4)	0.0007 (4)
C6B	0.0135 (4)	0.0133 (5)	0.0148 (5)	0.0000 (3)	0.0071 (4)	0.0009 (3)
C7B	0.0152 (5)	0.0170 (5)	0.0163 (5)	0.0001 (4)	0.0070 (4)	0.0007 (4)
C8B	0.0176 (5)	0.0410 (7)	0.0148 (5)	-0.0037 (5)	0.0055 (4)	-0.0017 (5)

C9B	0.0236 (6)	0.0469 (8)	0.0197 (6)	0.0022 (5)	0.0111 (5)	0.0074 (5)
C10B	0.0194 (5)	0.0187 (5)	0.0158 (5)	0.0009 (4)	0.0107 (4)	0.0007 (4)
C11B	0.0255 (6)	0.0209 (5)	0.0226 (5)	-0.0013 (4)	0.0154 (5)	0.0024 (4)
C12B	0.0265 (6)	0.0306 (6)	0.0152 (5)	0.0009 (5)	0.0099 (5)	0.0008 (4)
C13B	0.0242 (5)	0.0205 (5)	0.0251 (6)	0.0019 (4)	0.0151 (5)	-0.0022 (4)

Geometric parameters (Å, °)

O1A—C7A	1.3418 (13)	O1B—C7B	1.3424 (13)
O1A—C8A	1.4489 (13)	O1B—C8B	1.4503 (13)
O2A—C7A	1.2136 (13)	O2B—C7B	1.2125 (13)
O3A—N1A	1.2340 (12)	O3B—N1B	1.2332 (12)
O4A—N1A	1.2424 (12)	O4B—N1B	1.2443 (12)
N1A—C2A	1.4474 (13)	N1B—C2B	1.4462 (13)
N2A—C3A	1.3470 (13)	N2B—C3B	1.3463 (13)
N2A—C10A	1.4810 (13)	N2B—C10B	1.4816 (13)
N2A—H2NA	0.8617	N2B—H2NB	0.8733
C1A—C6A	1.3827 (14)	C1B—C6B	1.3809 (14)
C1A—C2A	1.3925 (14)	C1B—C2B	1.3924 (14)
C1A—H1A	0.9500	C1B—H1B	0.9500
C2A—C3A	1.4328 (14)	C2B—C3B	1.4321 (14)
C3A—C4A	1.4265 (14)	C3B—C4B	1.4238 (14)
C4A—C5A	1.3663 (14)	C4B—C5B	1.3683 (14)
C4A—H4A	0.9500	C4B—H4B	0.9500
C5A—C6A	1.4076 (14)	C5B—C6B	1.4076 (14)
C5A—H5A	0.9500	C5B—H5B	0.9500
C6A—C7A	1.4784 (14)	C6B—C7B	1.4778 (14)
C8A—C9A	1.4973 (17)	C8B—C9B	1.5003 (19)
C8A—H8A	0.9900	C8B—H8C	0.9900
C8A—H8B	0.9900	C8B—H8D	0.9900
C9A—H9A	0.9800	C9B—H9D	0.9800
C9A—H9B	0.9800	C9B—H9E	0.9800
C9A—H9C	0.9800	C9B—H9F	0.9800
C10A—C13A	1.5320 (15)	C10B—C13B	1.5302 (15)
C10A—C11A	1.5331 (15)	C10B—C11B	1.5323 (15)
C10A—C12A	1.5343 (15)	C10B—C12B	1.5338 (15)
C11A—H11A	0.9800	C11B—H11D	0.9800
C11A—H11B	0.9800	C11B—H11E	0.9800
C11A—H11C	0.9800	C11B—H11F	0.9800
C12A—H12A	0.9800	C12B—H12D	0.9800
C12A—H12B	0.9800	C12B—H12E	0.9800
C12A—H12C	0.9800	C12B—H12F	0.9800
C13A—H13A	0.9800	C13B—H13D	0.9800
C13A—H13B	0.9800	C13B—H13E	0.9800
C13A—H13C	0.9800	C13B—H13F	0.9800
Cg1...Cg2 ⁱ	3.7853 (6)	Cg1...Cg2 ⁱⁱ	3.8625 (6)

C7A—O1A—C8A	115.30 (9)	C7B—O1B—C8B	116.24 (9)
O3A—N1A—O4A	121.71 (9)	O3B—N1B—O4B	121.87 (9)
O3A—N1A—C2A	118.70 (9)	O3B—N1B—C2B	118.70 (9)
O4A—N1A—C2A	119.59 (9)	O4B—N1B—C2B	119.43 (9)
C3A—N2A—C10A	129.22 (9)	C3B—N2B—C10B	129.04 (9)
C3A—N2A—H2NA	113.4	C3B—N2B—H2NB	115.9
C10A—N2A—H2NA	117.3	C10B—N2B—H2NB	115.0
C6A—C1A—C2A	120.74 (9)	C6B—C1B—C2B	120.85 (9)
C6A—C1A—H1A	119.6	C6B—C1B—H1B	119.6
C2A—C1A—H1A	119.6	C2B—C1B—H1B	119.6
C1A—C2A—C3A	122.10 (9)	C1B—C2B—C3B	121.91 (9)
C1A—C2A—N1A	115.83 (9)	C1B—C2B—N1B	115.79 (9)
C3A—C2A—N1A	122.07 (9)	C3B—C2B—N1B	122.30 (9)
N2A—C3A—C4A	121.97 (9)	N2B—C3B—C4B	121.65 (9)
N2A—C3A—C2A	122.98 (9)	N2B—C3B—C2B	123.11 (9)
C4A—C3A—C2A	115.05 (9)	C4B—C3B—C2B	115.23 (9)
C5A—C4A—C3A	122.23 (10)	C5B—C4B—C3B	122.25 (9)
C5A—C4A—H4A	118.9	C5B—C4B—H4B	118.9
C3A—C4A—H4A	118.9	C3B—C4B—H4B	118.9
C4A—C5A—C6A	121.42 (9)	C4B—C5B—C6B	121.22 (9)
C4A—C5A—H5A	119.3	C4B—C5B—H5B	119.4
C6A—C5A—H5A	119.3	C6B—C5B—H5B	119.4
C1A—C6A—C5A	118.45 (9)	C1B—C6B—C5B	118.54 (9)
C1A—C6A—C7A	119.36 (9)	C1B—C6B—C7B	119.12 (9)
C5A—C6A—C7A	122.19 (9)	C5B—C6B—C7B	122.34 (9)
O2A—C7A—O1A	122.82 (10)	O2B—C7B—O1B	123.56 (10)
O2A—C7A—C6A	125.16 (10)	O2B—C7B—C6B	124.77 (10)
O1A—C7A—C6A	112.03 (9)	O1B—C7B—C6B	111.67 (9)
O1A—C8A—C9A	107.65 (9)	O1B—C8B—C9B	111.18 (11)
O1A—C8A—H8A	110.2	O1B—C8B—H8C	109.4
C9A—C8A—H8A	110.2	C9B—C8B—H8C	109.4
O1A—C8A—H8B	110.2	O1B—C8B—H8D	109.4
C9A—C8A—H8B	110.2	C9B—C8B—H8D	109.4
H8A—C8A—H8B	108.5	H8C—C8B—H8D	108.0
C8A—C9A—H9A	109.5	C8B—C9B—H9D	109.5
C8A—C9A—H9B	109.5	C8B—C9B—H9E	109.5
H9A—C9A—H9B	109.5	H9D—C9B—H9E	109.5
C8A—C9A—H9C	109.5	C8B—C9B—H9F	109.5
H9A—C9A—H9C	109.5	H9D—C9B—H9F	109.5
H9B—C9A—H9C	109.5	H9E—C9B—H9F	109.5
N2A—C10A—C13A	111.31 (9)	N2B—C10B—C13B	111.59 (9)
N2A—C10A—C11A	111.21 (9)	N2B—C10B—C11B	111.24 (9)
C13A—C10A—C11A	112.61 (9)	C13B—C10B—C11B	111.97 (9)
N2A—C10A—C12A	104.30 (8)	N2B—C10B—C12B	104.10 (9)
C13A—C10A—C12A	108.24 (9)	C13B—C10B—C12B	108.70 (9)
C11A—C10A—C12A	108.76 (9)	C11B—C10B—C12B	108.88 (9)
C10A—C11A—H11A	109.5	C10B—C11B—H11D	109.5
C10A—C11A—H11B	109.5	C10B—C11B—H11E	109.5

H11A—C11A—H11B	109.5	H11D—C11B—H11E	109.5
C10A—C11A—H11C	109.5	C10B—C11B—H11F	109.5
H11A—C11A—H11C	109.5	H11D—C11B—H11F	109.5
H11B—C11A—H11C	109.5	H11E—C11B—H11F	109.5
C10A—C12A—H12A	109.5	C10B—C12B—H12D	109.5
C10A—C12A—H12B	109.5	C10B—C12B—H12E	109.5
H12A—C12A—H12B	109.5	H12D—C12B—H12E	109.5
C10A—C12A—H12C	109.5	C10B—C12B—H12F	109.5
H12A—C12A—H12C	109.5	H12D—C12B—H12F	109.5
H12B—C12A—H12C	109.5	H12E—C12B—H12F	109.5
C10A—C13A—H13A	109.5	C10B—C13B—H13D	109.5
C10A—C13A—H13B	109.5	C10B—C13B—H13E	109.5
H13A—C13A—H13B	109.5	H13D—C13B—H13E	109.5
C10A—C13A—H13C	109.5	C10B—C13B—H13F	109.5
H13A—C13A—H13C	109.5	H13D—C13B—H13F	109.5
H13B—C13A—H13C	109.5	H13E—C13B—H13F	109.5

Symmetry codes: (i) $x, -y-1/2, z-1/2$; (ii) $x, -y+1/2, z-1/2$.

Hydrogen-bond geometry ($\text{\AA}, ^\circ$)

$D-H\cdots A$	$D-H$	$H\cdots A$	$D\cdots A$	$D-H\cdots A$
N2A—H2NA \cdots O4A	0.86	1.93	2.6299 (15)	138
N2A—H2NA \cdots N1A	0.86	2.54	2.9361 (15)	109
N2B—H2NB \cdots O4B	0.87	1.95	2.6355 (15)	134
N2B—H2NB \cdots N1B	0.87	2.58	2.9419 (15)	106
C1A—H1A \cdots O3A	0.95	2.31	2.6522 (16)	100
C1B—H1B \cdots O3B	0.95	2.31	2.6498 (16)	100
C4A—H4A \cdots O3B ⁱⁱⁱ	0.95	2.50	3.4124 (17)	160
C4B—H4B \cdots O3A ^{iv}	0.95	2.42	3.2566 (18)	147
C5A—H5A \cdots O1A	0.95	2.41	2.7326 (13)	100
C11A—H11A \cdots O2B ^v	0.98	2.55	3.4714 (17)	157
C11B—H11F \cdots O2A ⁱⁱ	0.98	2.52	3.4446 (17)	158
C13B—H13D \cdots O2A ^{vi}	0.98	2.60	3.5071 (17)	154

Symmetry codes: (ii) $x, -y+1/2, z-1/2$; (iii) $-x+2, -y+1, -z+1$; (iv) $-x+1, -y+1, -z+1$; (v) $x, -y+1/2, z+1/2$; (vi) $x, -y+3/2, z-1/2$.