

Acta Crystallographica Section E

## Structure Reports

Online

ISSN 1600-5368

## 2,2'-Dimethoxybiphenyl

 Kosuke Nakaema,<sup>a</sup> Akiko Okamoto,<sup>a</sup> Satoshi Maruyama,<sup>b</sup> Keiichi Noguchi<sup>c</sup> and Noriyuki Yonezawa<sup>a\*</sup>

<sup>a</sup>Department of Organic and Polymer Materials Chemistry, Tokyo University of Agriculture & Technology, Koganei, Tokyo 184-8588, Japan, <sup>b</sup>TDK Corporation, 2-15-7, Hiagashi Owada, Ichikawa, Chiba 272-8558, Japan, and <sup>c</sup>Instrumentation Analysis Center, Tokyo University of Agriculture & Technology, Koganei, Tokyo 184-8588, Japan

Correspondence e-mail: yonezawa@cc.tuat.ac.jp

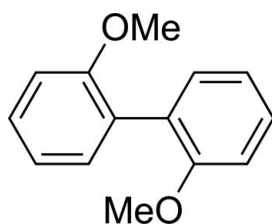
Received 4 July 2008; accepted 5 August 2008

Key indicators: single-crystal X-ray study;  $T = 193$  K; mean  $\sigma(\text{C}-\text{C}) = 0.002$  Å;  $R$  factor = 0.025;  $wR$  factor = 0.071; data-to-parameter ratio = 8.7.

The molecule of the title compound,  $\text{C}_{14}\text{H}_{14}\text{O}_2$ , lies on a crystallographic twofold axis perpendicular to the central C—C bond; there is one half-molecule in the asymmetric unit. The angle between the least-squares planes of the two aromatic rings is  $66.94(7)^\circ$ . The methoxy group, with a twist angle of  $10.69(8)^\circ$ , is slightly out of the plane of the benzene ring. In the crystal structure, C—H $\cdots\pi$  interactions are observed between adjacent molecules along the  $c$ -axis direction.

## Related literature

For related literature, see: Hargreaves *et al.* (1961); Yonezawa *et al.* (1993, 2000, 2003); Iyoda *et al.* (1990).



## Experimental

## Crystal data

$\text{C}_{14}\text{H}_{14}\text{O}_2$   
 $M_r = 214.25$   
 Tetragonal,  $P4_12_12$   
 $a = 7.39307(13)$  Å  
 $c = 20.1623(4)$  Å  
 $V = 1102.02(4)$  Å<sup>3</sup>

$Z = 4$   
 Cu  $K\alpha$  radiation  
 $\mu = 0.68$  mm<sup>-1</sup>  
 $T = 193$  K  
 $0.40 \times 0.20 \times 0.10$  mm

## Data collection

Rigaku R-Axis RAPID diffractometer  
 Absorption correction: numerical (NUMABS; Higashi, 1999)  
 $T_{\min} = 0.813$ ,  $T_{\max} = 0.934$

20356 measured reflections  
 651 independent reflections  
 640 reflections with  $I > 2\sigma(I)$   
 $R_{\text{int}} = 0.024$

## Refinement

$R[F^2 > 2\sigma(F^2)] = 0.024$   
 $wR(F^2) = 0.071$   
 $S = 1.14$   
 651 reflections

75 parameters  
 H-atom parameters constrained  
 $\Delta\rho_{\max} = 0.15$  e Å<sup>-3</sup>  
 $\Delta\rho_{\min} = -0.11$  e Å<sup>-3</sup>

Table 1

Hydrogen-bond geometry (Å, °).

| $D-H\cdots A$                           | $D-H$ | $H\cdots A$ | $D\cdots A$ | $D-H\cdots A$ |
|---|-------|-------------|-------------|---------------|
| $\text{C3}-\text{H3}\cdots\text{Cg1}^i$ | 0.95  | 2.85        | 3.7266 (14) | 154           |

Symmetry code: (i)  $-x + \frac{3}{2}, y - \frac{1}{2}, -z + \frac{1}{4}$ . Cg1 is the centroid of atoms C1–C6.

Data collection: *PROCESS-AUTO* (Rigaku, 1998); cell refinement: *PROCESS-AUTO*; data reduction: *CrystalStructure* (Rigaku/MS, 2004); program(s) used to solve structure: *SIR2004* (Burla *et al.*, 2005); program(s) used to refine structure: *SHELXL97* (Sheldrick, 2008); molecular graphics: *ORTEPIII* (Burnett & Johnson, 1996); software used to prepare material for publication: *SHELXL97*.

This work was partially supported by The Shorai Foundation for Science and Technology, Tokyo, Japan.

Supplementary data and figures for this paper are available from the IUCr electronic archives (Reference: FL2209).

## References

- Burla, M. C., Caliandro, R., Camalli, M., Carrozzini, B., Cascarano, G. L., De Caro, L., Giacovazzo, C., Polidori, G. & Spagna, R. (2005). *J. Appl. Cryst.* **38**, 381–388.
- Burnett, M. N. & Johnson, C. K. (1996). *ORTEPIII*. Report ORNL-6895. Oak Ridge National Laboratory, Tennessee, USA.
- Hargreaves, A., Rizvi, S. H. & Trotter, J. (1961). *Proc. Chem. Soc.* 122–3.
- Higashi, T. (1999). *NUMABS*. Rigaku Corporation, Tokyo, Japan.
- Iyoda, M., Otsuka, H., Sato, K., Nisato, N. & Oda, M. (1990). *Bull. Chem. Soc. Jpn.* **63**, 80–87.
- Rigaku (1998). *PROCESS-AUTO*. Rigaku Corporation, Tokyo, Japan.
- Rigaku/MS (2004). *CrystalStructure*. Rigaku/MS, The Woodlands, Texas, USA.
- Sheldrick, G. M. (2008). *Acta Cryst.* **A64**, 112–122.
- Yonezawa, N., Ikezaki, T., Nakamura, H. & Maeyama, K. (2000). *Macromolecules*, **33**, 8125–8129.
- Yonezawa, N., Miyata, S., Nakamura, T., Mori, S., Ueha, Y. & Kataki, R. (1993). *Macromolecules*, **26**, 5262–5263.
- Yonezawa, N., Mori, S., Miyata, S., Ueha, A. Y., Wu, S. M. & Maeyama, K. (2003). *Polym. J.* **35**, 998–1002.

**supplementary materials**

*Acta Cryst.* (2008). E64, o1731 [ doi:10.1107/S1600536808025178 ]

## 2,2'-Dimethoxybiphenyl

K. Nakaema, A. Okamoto, S. Maruyama, K. Noguchi and N. Yonezawa

### Comment

Biphenyl is the simplest example of aromatic ring assemblies in which aromatic rings are connected by a single bond. The apparent single bond lies behind the characteristic diversity in the molecular structure and chemical properties of these assemblies. As with the formal single bonding of alternative polyenes, the single bond between the aromatic rings has the nature of double bonding. However, the steric hindrance of substituents, especially at the *o*-positions, collapses coplanarity lowering the stabilizing conjugative effects on the structure. The non-substituted biphenyl is planar in the solid state in spite of the *o*-protons' repulsion (Hargreaves *et al.*, 1961) but it has a twisted conformation in solution. In the past decade and a half, the authors have demonstrated the excellent acyl-accepting ability of (I), an *o,o'*-disubstituted biphenyl, in consecutive dual electrophilic aromatic arylation reactions, especially in condensation polymerization or monomer preparation for wholly aromatic polyketones (Yonezawa *et al.*, 1993, 2000, 2003). The strong electron donating ability of the *o*-methoxy group should make (I) highly reactive against electrophiles not only for a first acylation but also for a second one, even though the introduced ketonic carbonyl group has a strong electron-withdrawing nature. The maintenance of high reactivity after the first acylation is thought to be brought about by the suitable conformation of the mono-acylated intermediate preventing the transmission of the electron-withdrawing effect of the acyl group to the other aromatic ring.

The molecule of (I) lies across a crystallographic 2-fold axis so that the asymmetric unit contains one-half molecule (Fig. 1). The 2-fold axis is perpendicular to the central C—C bond of (I). The angle between the least-squares planes of the two phenyl rings is 66.94 (7)°. The methoxy group is slightly out of the plane of the phenyl ring with the angle between the O1—C7 bond and least-squares plane of the phenyl ring at 10.69 (8)°. The molecular packing of (I) is mainly stabilized by van der Waals interactions. In addition, C—H $\cdots$  $\pi$  interactions are observed between adjacent molecules along the *c*-direction (Fig. 2). The distance between H3 and *Cg* (the ring center of gravity) at (3/2 - *x*, *y* - 1/2, 1/4 - *z*) is 2.85 Å. The slightly short intermolecular C6 $\cdots$ H7A at (*y* + 1/2, 1/2 - *x*, *z* - 1/4) contact of 2.86 Å is also found.

### Experimental

To the solution of 2,2'-dihydroxybiphenyl (5.5 g, 26 mmol) in an aqueous NaOH solution (3.2 wt-%, 220 ml), dimethyl sulfate (16 g, 127 mmol) was added dropwise over a period of 10 min with ice-cooling and vigorous stirring. After stirring for 3 h, the resulting precipitate was collected by filtration and dissolved in chloroform (*ca* 100 ml). The solution was washed with aqueous 1 M NaOH solution (*ca* 100 ml) and dried over granular magnesium sulfate. The crude product obtained by evaporation of the above solution was recrystallized from acetone. Yield 72%. *M.p.* 154–154.5°C. Lit. 154–155°C (Iyoda *et al.*, 1990). Colorless single crystals suitable for X-ray diffraction were obtained by simple standing of the hot acetone solution of the crude crystals at room temperature in an Erlenmeyer flask with a cork-stopper.

## Refinement

All the H atoms were found in difference maps and were subsequently refined as riding atoms, with C—H = 0.95 (aromatic) and 0.98 (methyl) Å, and  $U_{\text{iso}}(\text{H}) = 1.2U_{\text{eq}}(\text{C})$ . The anomalous scattering signal of (I) is too weak to predict the accurate absolute structure. Therefore, the merging of Friedel-pair data was performed before final refinement.

## Figures

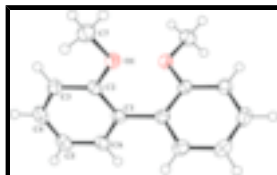


Fig. 1. Molecular structure of (I), with the atom-labeling scheme and displacement ellipsoids drawn at the 50% probability level. Unlabeled atoms are related to labeled atoms by  $x, y, -z$ .

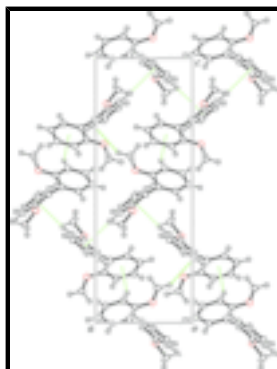


Fig. 2. A partial packing diagram of (I), viewed down the  $b$ -axis. Green broken and full lines indicate the C—H... $\pi$  and short C...H interactions, respectively.

## 2,2'-Dimethoxybiphenyl

### Crystal data

$\text{C}_{14}\text{H}_{14}\text{O}_2$

$M_r = 214.25$

Tetragonal,  $P4_12_12$

Hall symbol: P 4abw 2nw

$a = 7.39307(13) \text{ \AA}$

$b = 7.39307(13) \text{ \AA}$

$c = 20.1623(4) \text{ \AA}$

$\alpha = 90^\circ$

$\beta = 90^\circ$

$\gamma = 90^\circ$

$V = 1102.02(4) \text{ \AA}^3$

$Z = 4$

$F_{000} = 456$

$D_x = 1.291 \text{ Mg m}^{-3}$

Melting point = 427.0–427.5 K

Cu  $K\alpha$  radiation

$\lambda = 1.54187 \text{ \AA}$

Cell parameters from 19640 reflections

$\theta = 4.4\text{--}68.2^\circ$

$\mu = 0.68 \text{ mm}^{-1}$

$T = 193 \text{ K}$

Block, colorless

$0.40 \times 0.20 \times 0.10 \text{ mm}$

### Data collection

Rigaku R-Axis RAPID  
diffractometer

651 independent reflections

|   |                                       |
|---|---------------------------------------|
| Radiation source: rotating anode                            | 640 reflections with $I > 2\sigma(I)$ |
| Monochromator: graphite                                     | $R_{\text{int}} = 0.024$              |
| Detector resolution: 10.00 pixels $\text{mm}^{-1}$          | $\theta_{\text{max}} = 68.2^\circ$    |
| $T = 193$ K   | $\theta_{\text{min}} = 6.4^\circ$     |
| $\omega$ scans  | $h = -8 \rightarrow 8$                |
| Absorption correction: numerical<br>(NUMABS; Higashi, 1999) | $k = -8 \rightarrow 8$                |
| $T_{\text{min}} = 0.813$ , $T_{\text{max}} = 0.934$         | $l = -24 \rightarrow 24$              |
| 20356 measured reflections                                  |                                       |

### Refinement

|  |   |
|--|---|
| Refinement on $F^2$  | Hydrogen site location: difference Fourier map  |
| Least-squares matrix: full                                     | H-atom parameters constrained   |
| $R[F^2 > 2\sigma(F^2)] = 0.024$                                | $w = 1/[\sigma^2(F_o^2) + (0.0428P)^2 + 0.1367P]$   |
| $wR(F^2) = 0.071$  | where $P = (F_o^2 + 2F_c^2)/3$  |
| $S = 1.14$   | $(\Delta/\sigma)_{\text{max}} < 0.001$  |
| 651 reflections  | $\Delta\rho_{\text{max}} = 0.15 \text{ e } \text{\AA}^{-3}$   |
| 75 parameters  | $\Delta\rho_{\text{min}} = -0.11 \text{ e } \text{\AA}^{-3}$  |
| Primary atom site location: structure-invariant direct methods | Extinction correction: SHELXL97 (Sheldrick, 2008),<br>$F_c^* = kFc[1 + 0.001x Fc^2 \lambda^3 / \sin(2\theta)]^{-1/4}$ |
| Secondary atom site location: difference Fourier map           | Extinction coefficient: 0.0079 (11)   |

### Special details

**Geometry.** All e.s.d.'s (except the e.s.d. in the dihedral angle between two l.s. planes) are estimated using the full covariance matrix. The cell e.s.d.'s are taken into account individually in the estimation of e.s.d.'s in distances, angles and torsion angles; correlations between e.s.d.'s in cell parameters are only used when they are defined by crystal symmetry. An approximate (isotropic) treatment of cell e.s.d.'s is used for estimating e.s.d.'s involving l.s. planes.

**Refinement.** Refinement of  $F^2$  against ALL reflections. The weighted  $R$ -factor  $wR$  and goodness of fit  $S$  are based on  $F^2$ , conventional  $R$ -factors  $R$  are based on  $F$ , with  $F$  set to zero for negative  $F^2$ . The threshold expression of  $F^2 > \sigma(F^2)$  is used only for calculating  $R$ -factors(gt) *etc.* and is not relevant to the choice of reflections for refinement.  $R$ -factors based on  $F^2$  are statistically about twice as large as those based on  $F$ , and  $R$ -factors based on ALL data will be even larger.

### Fractional atomic coordinates and isotropic or equivalent isotropic displacement parameters ( $\text{\AA}^2$ )

|    | $x$          | $y$          | $z$         | $U_{\text{iso}}^*/U_{\text{eq}}$ |
|----|--------------|--------------|-------------|----------------------------------|
| O1 | 0.41372 (12) | 0.38528 (13) | 0.07663 (4) | 0.0307 (3)                       |
| C1 | 0.64788 (17) | 0.51523 (17) | 0.01376 (5) | 0.0237 (3)                       |
| C2 | 0.59201 (17) | 0.38066 (18) | 0.05852 (6) | 0.0249 (3)                       |
| C3 | 0.71465 (19) | 0.25505 (19) | 0.08287 (6) | 0.0297 (3)                       |
| H3 | 0.6753       | 0.1627       | 0.1123      | 0.036*                           |
| C4 | 0.89583 (18) | 0.2648 (2)   | 0.06399 (7) | 0.0332 (4)                       |
| H4 | 0.9793       | 0.1774       | 0.0800      | 0.040*                           |

## supplementary materials

---

|     |              |              |              |            |
|-----|--------------|--------------|--------------|------------|
| C5  | 0.95499 (19) | 0.4005 (2)   | 0.02208 (6)  | 0.0338 (4) |
| H5  | 1.0792       | 0.4093       | 0.0105       | 0.041*     |
| C6  | 0.83034 (18) | 0.52435 (19) | -0.00291 (6) | 0.0290 (3) |
| H6  | 0.8708       | 0.6171       | -0.0320      | 0.035*     |
| C7  | 0.3605 (2)   | 0.2711 (2)   | 0.13032 (7)  | 0.0364 (4) |
| H7A | 0.2347       | 0.2969       | 0.1423       | 0.044*     |
| H7B | 0.4388       | 0.2939       | 0.1686       | 0.044*     |
| H7C | 0.3715       | 0.1442       | 0.1169       | 0.044*     |

### Atomic displacement parameters ( $\text{\AA}^2$ )

|    | $U^{11}$   | $U^{22}$   | $U^{33}$   | $U^{12}$    | $U^{13}$    | $U^{23}$    |
|----|------------|------------|------------|-------------|-------------|-------------|
| O1 | 0.0242 (5) | 0.0351 (6) | 0.0327 (5) | 0.0000 (4)  | 0.0018 (4)  | 0.0101 (4)  |
| C1 | 0.0259 (7) | 0.0252 (7) | 0.0201 (6) | -0.0028 (5) | -0.0028 (5) | -0.0028 (5) |
| C2 | 0.0244 (6) | 0.0274 (7) | 0.0229 (6) | -0.0016 (5) | -0.0030 (5) | -0.0025 (5) |
| C3 | 0.0327 (7) | 0.0281 (7) | 0.0282 (6) | -0.0012 (6) | -0.0051 (5) | 0.0031 (6)  |
| C4 | 0.0299 (7) | 0.0359 (8) | 0.0339 (7) | 0.0067 (6)  | -0.0073 (6) | -0.0019 (6) |
| C5 | 0.0238 (7) | 0.0462 (9) | 0.0313 (7) | 0.0004 (6)  | -0.0014 (5) | -0.0038 (6) |
| C6 | 0.0284 (7) | 0.0350 (8) | 0.0237 (6) | -0.0048 (6) | -0.0004 (6) | -0.0009 (6) |
| C7 | 0.0351 (8) | 0.0410 (9) | 0.0331 (6) | -0.0020 (6) | 0.0055 (6)  | 0.0094 (6)  |

### Geometric parameters ( $\text{\AA}$ , $^\circ$ )

|                           |              |             |             |
|---------------------------|--------------|-------------|-------------|
| O1—C2                     | 1.3682 (16)  | C4—C5       | 1.383 (2)   |
| O1—C7                     | 1.4279 (16)  | C4—H4       | 0.9500      |
| C1—C6                     | 1.3918 (18)  | C5—C6       | 1.393 (2)   |
| C1—C2                     | 1.4053 (18)  | C5—H5       | 0.9500      |
| C1—C1 <sup>i</sup>        | 1.494 (3)    | C6—H6       | 0.9500      |
| C2—C3                     | 1.3876 (18)  | C7—H7A      | 0.9800      |
| C3—C4                     | 1.3944 (19)  | C7—H7B      | 0.9800      |
| C3—H3                     | 0.9500       | C7—H7C      | 0.9800      |
| C2—O1—C7                  | 116.93 (11)  | C4—C5—C6    | 119.25 (14) |
| C6—C1—C2                  | 118.31 (12)  | C4—C5—H5    | 120.4       |
| C6—C1—C1 <sup>i</sup>     | 120.99 (10)  | C6—C5—H5    | 120.4       |
| C2—C1—C1 <sup>i</sup>     | 120.69 (10)  | C1—C6—C5    | 121.46 (13) |
| O1—C2—C3                  | 123.49 (12)  | C1—C6—H6    | 119.3       |
| O1—C2—C1                  | 115.90 (11)  | C5—C6—H6    | 119.3       |
| C3—C2—C1                  | 120.60 (12)  | O1—C7—H7A   | 109.5       |
| C2—C3—C4                  | 119.78 (13)  | O1—C7—H7B   | 109.5       |
| C2—C3—H3                  | 120.1        | H7A—C7—H7B  | 109.5       |
| C4—C3—H3                  | 120.1        | O1—C7—H7C   | 109.5       |
| C5—C4—C3                  | 120.53 (13)  | H7A—C7—H7C  | 109.5       |
| C5—C4—H4                  | 119.7        | H7B—C7—H7C  | 109.5       |
| C3—C4—H4                  | 119.7        |             |             |
| C7—O1—C2—C3               | 9.30 (18)    | C1—C2—C3—C4 | 1.5 (2)     |
| C7—O1—C2—C1               | -169.45 (11) | C2—C3—C4—C5 | 1.1 (2)     |
| C6—C1—C2—O1               | 175.77 (11)  | C3—C4—C5—C6 | -2.1 (2)    |
| C1 <sup>i</sup> —C1—C2—O1 | -2.66 (18)   | C2—C1—C6—C5 | 2.0 (2)     |

|                           |              |                           |              |
|---------------------------|--------------|---------------------------|--------------|
| C6—C1—C2—C3               | -3.02 (18)   | C1 <sup>i</sup> —C1—C6—C5 | -179.53 (12) |
| C1 <sup>i</sup> —C1—C2—C3 | 178.54 (12)  | C4—C5—C6—C1               | 0.5 (2)      |
| O1—C2—C3—C4               | -177.22 (12) |                           |              |

Symmetry codes: (i)  $y, x, -z$ .

*Hydrogen-bond geometry* ( $\text{\AA}, ^\circ$ )

| $D-H\cdots A$                    | $D-H$ | $H\cdots A$ | $D\cdots A$ | $D-H\cdots A$ |
|----------------------------------|-------|-------------|-------------|---------------|
| C3—H3 $\cdots$ Cg1 <sup>ii</sup> | 0.95  | 2.85        | 3.7266 (14) | 154           |

Symmetry codes: (ii)  $-x+3/2, y-1/2, -z+1/4$ .

Fig. 1

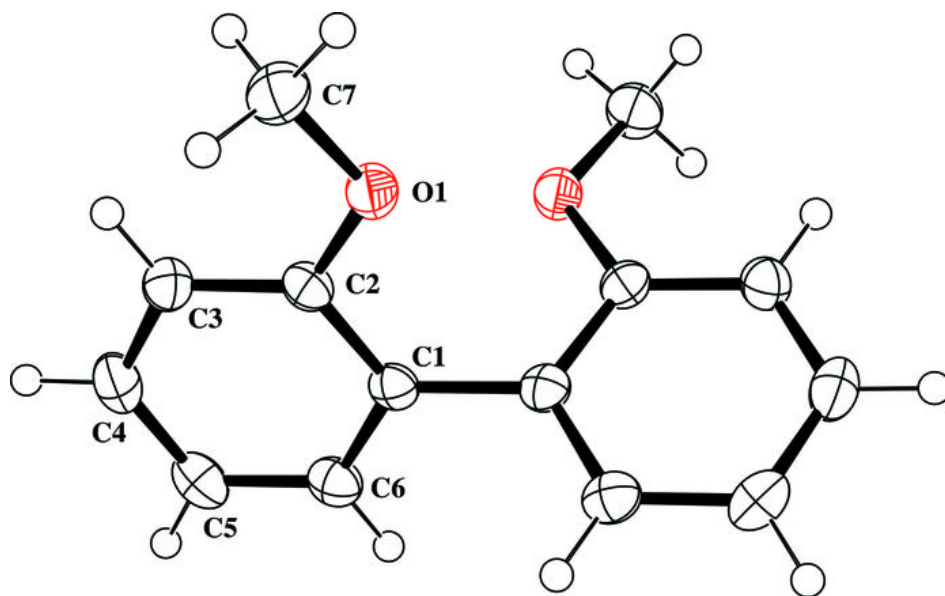


Fig. 2

