

Acta Crystallographica Section E

Structure Reports

Online

ISSN 1600-5368

1-Allyl-3-amino-1*H*-pyrazole-4-carboxylic acidGong-Chun Li,^a Li-Ye Wang,^a Ran Zhu^b and Feng-Ling Yang^{a*}^aCollege of Chemistry and Chemical Engineering, Xuchang University, Xuchang, Henan Province 461000, People's Republic of China, and ^bState Key Laboratory of Elemento-Organic Chemistry, Nankai University, Tianjin 300071, People's Republic of China

Correspondence e-mail: yfling2000cn@yahoo.com.cn

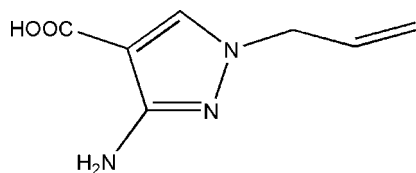
Received 17 October 2008; accepted 30 October 2008

Key indicators: single-crystal X-ray study; $T = 113$ K; mean $\sigma(\text{C}-\text{C}) = 0.002$ Å; R factor = 0.034; wR factor = 0.085; data-to-parameter ratio = 15.3.

The title compound, $\text{C}_7\text{H}_9\text{N}_3\text{O}_2$, was prepared by alkaline hydrolysis of ethyl 1-allyl-3-amino-1*H*-pyrazole-4-carboxylate. The crystal structure is stabilized by three types of intermolecular hydrogen bond ($\text{N}-\text{H}\cdots\text{O}$, $\text{N}-\text{H}\cdots\text{N}$ and $\text{O}-\text{H}\cdots\text{N}$).

Related literature

For details of the biological activities of pyrazole derivatives, see: Malhotra *et al.* (1997); Takao *et al.* (1994); Wang *et al.* (2005).



Experimental

Crystal data

$\text{C}_7\text{H}_9\text{N}_3\text{O}_2$
 $M_r = 167.17$
 Monoclinic, $P2_1/c$
 $a = 8.966$ (2) Å
 $b = 8.531$ (2) Å
 $c = 10.266$ (2) Å
 $\beta = 95.57$ (3)°

$V = 781.5$ (3) Å³
 $Z = 4$
 Mo $K\alpha$ radiation
 $\mu = 0.11$ mm⁻¹
 $T = 113$ (2) K
 $0.20 \times 0.18 \times 0.14$ mm

Data collection

Rigaku Saturn CCD area-detector diffractometer
 Absorption correction: multi-scan (*CrystalClear*; Rigaku/MS, 2005)
 $T_{\min} = 0.979$, $T_{\max} = 0.985$

5773 measured reflections
 1852 independent reflections
 1631 reflections with $I > 2\sigma(I)$
 $R_{\text{int}} = 0.025$

Refinement

$R[F^2 > 2\sigma(F^2)] = 0.034$
 $wR(F^2) = 0.085$
 $S = 1.06$
 1852 reflections
 121 parameters

H atoms treated by a mixture of independent and constrained refinement
 $\Delta\rho_{\text{max}} = 0.29$ e Å⁻³
 $\Delta\rho_{\text{min}} = -0.26$ e Å⁻³

Table 1

Hydrogen-bond geometry (Å, °).

$D-\text{H}\cdots A$	$D-\text{H}$	$\text{H}\cdots A$	$D\cdots A$	$D-\text{H}\cdots A$
$\text{N1}-\text{H1A}\cdots\text{O1}^{\text{i}}$	0.894 (16)	2.073 (16)	2.9652 (13)	175.7 (14)
$\text{N1}-\text{H1B}\cdots\text{N2}^{\text{ii}}$	0.905 (17)	2.457 (16)	3.2187 (14)	142.1 (13)
$\text{O2}-\text{H2A}\cdots\text{N1}^{\text{iii}}$	0.92 (2)	1.82 (2)	2.7232 (14)	166.8 (18)

Symmetry codes: (i) $-x + 1, y - \frac{1}{2}, -z + \frac{3}{2}$; (ii) $-x + 1, y + \frac{1}{2}, -z + \frac{3}{2}$; (iii) $x, -y + \frac{3}{2}, z - \frac{1}{2}$.

Data collection: *CrystalClear* (Rigaku/MS, 2005); cell refinement: *CrystalClear*; data reduction: *CrystalClear*; program(s) used to solve structure: *SHELXS97* (Sheldrick, 2008); program(s) used to refine structure: *SHELXL97* (Sheldrick, 2008); molecular graphics: *ORTEP-3* (Farrugia, 1997) and *DIAMOND* (Brandenburg, 1998); software used to prepare material for publication: *CrystalStructure* (Rigaku/MS, 2005).

This work was supported by the Program for New Century Excellent Talents in Universities of Henan Province (grant No. 2005HANCET-17), the Natural Science Foundation of Henan Province (grant No. 082300420110) and the Natural Science Foundation of Henan Province Education Department (grant No. 2007150036).

Supplementary data and figures for this paper are available from the IUCr electronic archives (Reference: LX2076).

References

- Brandenburg, K. (1998). *DIAMOND*. Crystal Impact GbR, Bonn, Germany.
 Farrugia, L. J. (1997). *J. Appl. Cryst.* **30**, 565.
 Malhotra, S., Parmar, V. S. & Errington, W. (1997). *Acta Cryst.* **C53**, 1885–1887.
 Rigaku/MS (2005). *CrystalClear* and *CrystalStructure*. Rigaku/MS, The Woodlands, Texas, USA.
 Sheldrick, G. M. (2008). *Acta Cryst.* **A64**, 112–122.
 Takao, H., Wakisaka, S. & Murai, K. (1994). Japanese Patent No. 06329633.
 Wang, J.-G., Li, Z.-M., Ma, N., Wang, B.-L., Jiang, L., Pang, S.-S., Lee, Y.-T., Guddat, L. W. & Duggleby, R. G. (2005). *J. Comput. Aided Mol. Des.* **19**, 801–820.

supplementary materials

Acta Cryst. (2008). E64, o2264 [doi:10.1107/S1600536808035538]

1-Allyl-3-amino-1H-pyrazole-4-carboxylic acid

G.-C. Li, L.-Y. Wang, R. Zhu and F.-L. Yang

Comment

Pyrazole ring derivatives are very important substances in biology and have many application in the field of pesticide and pharmaceutical agents (Malhotra *et al.*, 1997; Takao *et al.*, 1994). Some of these compounds such as pyrazosufuron have been sold as agrochemicals (Wang *et al.*, 2005).

Here we report the synthesis and crystal structure of the title compound, 1-allyl-3-amino-1H-pyrazole-4-carboxylic acid (Fig. 1). The crystal packing (Fig. 2) is stabilized by the intermolecular hydrogen bonds (Fig. 2 & Table 1).

Experimental

The mixture of ethyl 1-allyl-3-amino-1H-pyrazole-4-carboxylate (1.95 g, 10 mmol) in THF-MeOH (50 ml, v/v = 1/1) with 2.5N NaOH(25 ml) was heated at 333 K for 4 h. The solvent was removed under reduced pressure and the residue was acidified with 6N HCl at 273 K. A gray solid was precipitated, filtered, and washed with water. Single crystals suitable for X-ray diffraction were obtained by recrystallization of the title compound in ethanol.

Refinement

H atoms of N1 and O2 were positioned in a difference Fourier maps and their parameters were freely refined. The other H atoms were placed in calculated positions, with C—H = 0.95 or 0.99 Å, and and O—H = 0.82 Å, and included in the final cycles of refinement using a riding model, with $U_{\text{iso}}(\text{H}) = 1.2U_{\text{eq}}(\text{C})$.

Figures

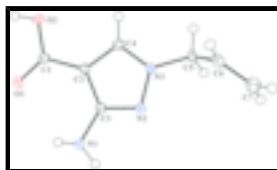


Fig. 1. The molecular structure of the title compound, showing displacement ellipsoids drawn at the 50% probability level.

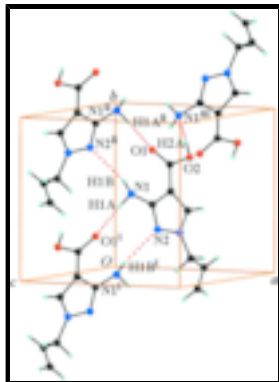


Fig. 2. Hydrogen bonds interactions (dotted lines) in the title compound. [symmetry code; (i) $-x+1, y-1/2, -z+3/2$; (ii) $-x+1, y+1/2, -z+3/2$; (iii) $x, -y+3/2, z-1/2$.]

1-Allyl-3-amino-1H-pyrazole-4-carboxylic acid

Crystal data

$C_7H_9N_3O_2$

$M_r = 167.17$

Monoclinic, $P2_1/c$

Hall symbol: $-P\ 2ybc$

$a = 8.966\ (2)\ \text{\AA}$

$b = 8.531\ (2)\ \text{\AA}$

$c = 10.266\ (2)\ \text{\AA}$

$\beta = 95.57\ (3)^\circ$

$V = 781.5\ (3)\ \text{\AA}^3$

$Z = 4$

$F_{000} = 352$

$D_x = 1.421\ \text{Mg m}^{-3}$

Mo $K\alpha$ radiation

$\lambda = 0.71073\ \text{\AA}$

Cell parameters from 2299 reflections

$\theta = 2.4\text{--}27.9^\circ$

$\mu = 0.11\ \text{mm}^{-1}$

$T = 113\ (2)\ \text{K}$

Prism, colorless

$0.20 \times 0.18 \times 0.14\ \text{mm}$

Data collection

Rigaku Saturn CCD area-detector diffractometer

Radiation source: rotating anode

Monochromator: confocal

Detector resolution: $7.31\ \text{pixels mm}^{-1}$

$T = 113\ (2)\ \text{K}$

ω and φ scans

Absorption correction: Multi-scan (CrystalClear; Rigaku/MS, 2005)

$T_{\min} = 0.979, T_{\max} = 0.985$

5773 measured reflections

1852 independent reflections

1631 reflections with $I > 2\sigma(I)$

$R_{\text{int}} = 0.025$

$\theta_{\max} = 27.9^\circ$

$\theta_{\min} = 3.1^\circ$

$h = -7 \rightarrow 11$

$k = -11 \rightarrow 11$

$l = -13 \rightarrow 13$

Refinement

Refinement on F^2

Least-squares matrix: full

$R[F^2 > 2\sigma(F^2)] = 0.034$

Secondary atom site location: difference Fourier map

Hydrogen site location: inferred from neighbouring sites

H atoms treated by a mixture of

	independent and constrained refinement
$wR(F^2) = 0.085$	$w = 1/[\sigma^2(F_o^2) + (0.0353P)^2 + 0.3376P]$
	where $P = (F_o^2 + 2F_c^2)/3$
$S = 1.06$	$(\Delta/\sigma)_{\max} < 0.001$
1852 reflections	$\Delta\rho_{\max} = 0.29 \text{ e } \text{\AA}^{-3}$
121 parameters	$\Delta\rho_{\min} = -0.25 \text{ e } \text{\AA}^{-3}$
Primary atom site location: structure-invariant direct methods	Extinction correction: none

Special details

Geometry. All esds (except the esd in the dihedral angle between two l.s. planes) are estimated using the full covariance matrix. The cell esds are taken into account individually in the estimation of esds in distances, angles and torsion angles; correlations between esds in cell parameters are only used when they are defined by crystal symmetry. An approximate (isotropic) treatment of cell esds is used for estimating esds involving l.s. planes.

Refinement. Refinement of F^2 against ALL reflections. The weighted R-factor wR and goodness of fit S are based on F^2 , conventional R-factors R are based on F , with F set to zero for negative F^2 . The threshold expression of $F^2 > 2\sigma(F^2)$ is used only for calculating R-factors(gt) etc. and is not relevant to the choice of reflections for refinement. R-factors based on F^2 are statistically about twice as large as those based on F , and R- factors based on ALL data will be even larger.

Fractional atomic coordinates and isotropic or equivalent isotropic displacement parameters (\AA^2)

	<i>x</i>	<i>y</i>	<i>z</i>	$U_{\text{iso}}^*/U_{\text{eq}}$
C1	0.64833 (12)	0.69316 (12)	0.51583 (10)	0.0123 (2)
C2	0.68026 (12)	0.53444 (13)	0.56126 (10)	0.0122 (2)
C3	0.63332 (12)	0.46275 (12)	0.67507 (10)	0.0116 (2)
C4	0.75001 (12)	0.41422 (13)	0.49875 (10)	0.0134 (2)
H4	0.7935	0.4217	0.4182	0.016*
C5	0.79757 (13)	0.12954 (13)	0.54567 (11)	0.0149 (2)
H5A	0.8212	0.1241	0.4536	0.018*
H5B	0.7169	0.0529	0.5570	0.018*
C6	0.93408 (13)	0.08629 (14)	0.63419 (11)	0.0177 (2)
H6	1.0204	0.1508	0.6340	0.021*
C7	0.94070 (15)	-0.03654 (16)	0.71224 (12)	0.0238 (3)
H7A	0.8560	-0.1030	0.7143	0.029*
H7B	1.0302	-0.0587	0.7665	0.029*
N1	0.55906 (11)	0.53395 (11)	0.77249 (9)	0.0132 (2)
H1A	0.5169 (17)	0.4628 (18)	0.8213 (15)	0.024 (4)*
H1B	0.4929 (18)	0.6087 (19)	0.7423 (15)	0.025 (4)*
N2	0.67310 (10)	0.31234 (11)	0.68348 (9)	0.0128 (2)
N3	0.74458 (10)	0.28673 (11)	0.57279 (9)	0.0128 (2)
O1	0.57152 (9)	0.78485 (9)	0.57215 (8)	0.01648 (19)
O2	0.70880 (9)	0.72908 (10)	0.40620 (8)	0.01749 (19)
H2A	0.663 (2)	0.818 (2)	0.3719 (19)	0.049 (5)*

supplementary materials

Atomic displacement parameters (\AA^2)

	U^{11}	U^{22}	U^{33}	U^{12}	U^{13}	U^{23}
C1	0.0129 (5)	0.0125 (5)	0.0113 (5)	-0.0016 (4)	0.0006 (4)	0.0004 (4)
C2	0.0130 (5)	0.0122 (5)	0.0114 (5)	0.0000 (4)	0.0007 (4)	0.0000 (4)
C3	0.0118 (5)	0.0113 (5)	0.0114 (5)	-0.0008 (4)	0.0001 (4)	-0.0012 (4)
C4	0.0141 (5)	0.0142 (5)	0.0119 (5)	0.0006 (4)	0.0016 (4)	0.0012 (4)
C5	0.0187 (5)	0.0114 (5)	0.0151 (5)	0.0026 (4)	0.0029 (4)	-0.0025 (4)
C6	0.0151 (5)	0.0168 (6)	0.0215 (5)	0.0026 (4)	0.0032 (4)	-0.0032 (4)
C7	0.0237 (6)	0.0262 (7)	0.0216 (6)	0.0075 (5)	0.0021 (5)	0.0031 (5)
N1	0.0170 (5)	0.0104 (4)	0.0127 (4)	0.0009 (4)	0.0043 (4)	0.0006 (3)
N2	0.0148 (4)	0.0124 (5)	0.0114 (4)	0.0007 (3)	0.0032 (3)	-0.0012 (3)
N3	0.0146 (4)	0.0124 (5)	0.0116 (4)	0.0015 (3)	0.0027 (3)	-0.0010 (3)
O1	0.0215 (4)	0.0125 (4)	0.0160 (4)	0.0026 (3)	0.0048 (3)	-0.0005 (3)
O2	0.0216 (4)	0.0160 (4)	0.0160 (4)	0.0043 (3)	0.0077 (3)	0.0058 (3)

Geometric parameters (\AA , $^\circ$)

C1—O1	1.2238 (13)	C5—H5A	0.9900
C1—O2	1.3316 (13)	C5—H5B	0.9900
C1—C2	1.4516 (15)	C6—C7	1.3170 (17)
C2—C4	1.3902 (15)	C6—H6	0.9500
C2—C3	1.4182 (14)	C7—H7A	0.9500
C3—N2	1.3323 (14)	C7—H7B	0.9500
C3—N1	1.3936 (14)	N1—H1A	0.894 (16)
C4—N3	1.3305 (14)	N1—H1B	0.905 (17)
C4—H4	0.9500	N2—N3	1.3752 (13)
C5—N3	1.4585 (14)	O2—H2A	0.92 (2)
C5—C6	1.4980 (16)		
O1—C1—O2	123.11 (10)	C6—C5—H5B	109.2
O1—C1—C2	123.16 (10)	H5A—C5—H5B	107.9
O2—C1—C2	113.73 (9)	C7—C6—C5	123.43 (11)
C4—C2—C3	104.18 (9)	C7—C6—H6	118.3
C4—C2—C1	128.56 (10)	C5—C6—H6	118.3
C3—C2—C1	127.00 (10)	C6—C7—H7A	120.0
N2—C3—N1	121.12 (10)	C6—C7—H7B	120.0
N2—C3—C2	111.70 (9)	H7A—C7—H7B	120.0
N1—C3—C2	127.15 (10)	C3—N1—H1A	111.3 (10)
N3—C4—C2	107.24 (9)	C3—N1—H1B	113.8 (10)
N3—C4—H4	126.4	H1A—N1—H1B	111.8 (14)
C2—C4—H4	126.4	C3—N2—N3	104.05 (9)
N3—C5—C6	111.89 (9)	C4—N3—N2	112.83 (9)
N3—C5—H5A	109.2	C4—N3—C5	127.73 (9)
C6—C5—H5A	109.2	N2—N3—C5	119.37 (9)
N3—C5—H5B	109.2	C1—O2—H2A	108.1 (12)
O1—C1—C2—C4	171.64 (11)	N3—C5—C6—C7	121.64 (12)
O2—C1—C2—C4	-7.54 (16)	N1—C3—N2—N3	-178.90 (9)

O1—C1—C2—C3	-1.60 (17)	C2—C3—N2—N3	-0.81 (12)
O2—C1—C2—C3	179.22 (10)	C2—C4—N3—N2	0.52 (12)
C4—C2—C3—N2	1.12 (12)	C2—C4—N3—C5	177.29 (10)
C1—C2—C3—N2	175.67 (10)	C3—N2—N3—C4	0.18 (12)
C4—C2—C3—N1	179.07 (10)	C3—N2—N3—C5	-176.89 (9)
C1—C2—C3—N1	-6.38 (18)	C6—C5—N3—C4	109.64 (12)
C3—C2—C4—N3	-0.95 (12)	C6—C5—N3—N2	-73.77 (12)
C1—C2—C4—N3	-175.38 (10)		

Hydrogen-bond geometry (\AA , $^\circ$)

<i>D</i> —H \cdots <i>A</i>	<i>D</i> —H	H \cdots <i>A</i>	<i>D</i> \cdots <i>A</i>	<i>D</i> —H \cdots <i>A</i>
N1—H1A \cdots O1 ⁱ	0.894 (16)	2.073 (16)	2.9652 (13)	175.7 (14)
N1—H1B \cdots N2 ⁱⁱ	0.905 (17)	2.457 (16)	3.2187 (14)	142.1 (13)
O2—H2A \cdots N1 ⁱⁱⁱ	0.92 (2)	1.82 (2)	2.7232 (14)	166.8 (18)

Symmetry codes: (i) $-x+1, y-1/2, -z+3/2$; (ii) $-x+1, y+1/2, -z+3/2$; (iii) $x, -y+3/2, z-1/2$.

Fig. 1

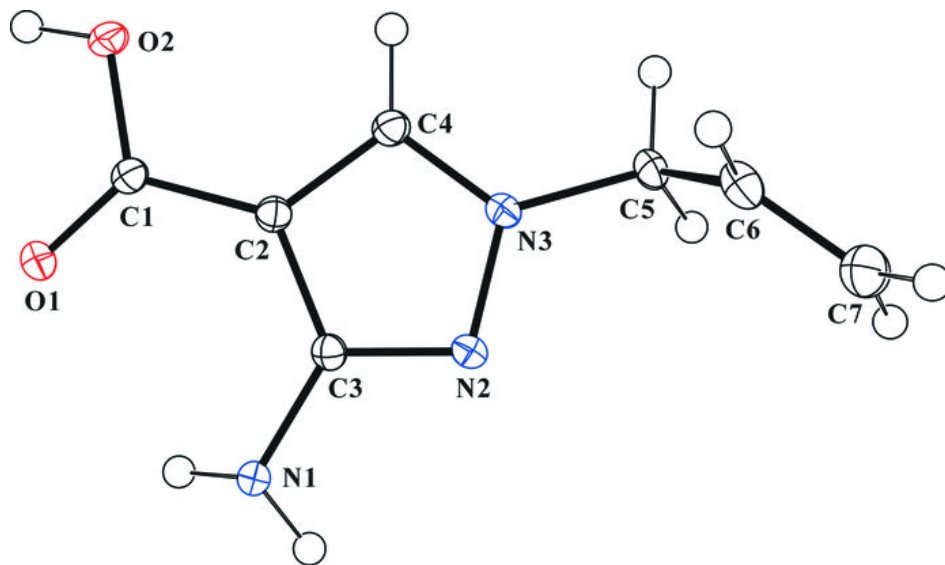


Fig. 2

