

Acta Crystallographica Section E

Structure Reports

Online

ISSN 1600-5368

{ μ -*N,N'*-Bis[1-(2-pyridyl)ethylidene]-benzene-1,2-diamine}di- μ -chlorido-bis[diaquanickel(II)] dichloride ethanol disolvate

Farba Bouyagui Tamboura,^a Mohamed Gaye,^{a*}
Abdou Salam Sall,^a Aliou Hamady Barry^b and Youssouph Bah^c

^aDépartement de Chimie, Faculté des Sciences et Techniques, Université Cheikh Anta Diop, Dakar, Senegal, ^bDépartement de Chimie, Faculté des Sciences, Université de Nouakchott, Nouakchott, Mauritania, and ^cDépartement de Chimie, Faculté des Sciences, Université de Conakry, Conakry, Guinea
Correspondence e-mail: mlgayeastou@yahoo.fr

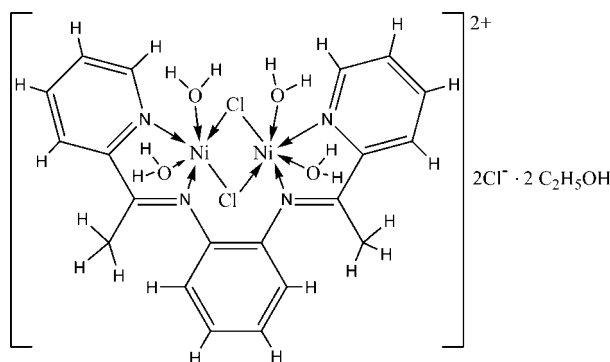
Received 13 November 2008; accepted 6 December 2008

Key indicators: single-crystal X-ray study; $T = 173$ K; mean $\sigma(\text{C}-\text{C}) = 0.005$ Å; R factor = 0.042; wR factor = 0.096; data-to-parameter ratio = 22.8.

In the title compound, $[\text{Ni}_2\text{Cl}_2(\text{C}_{20}\text{H}_{18}\text{N}_4)(\text{H}_2\text{O})_4]\text{Cl}_2 \cdot 2\text{C}_2\text{H}_5\text{O}$, the coordination environment of each Ni^{2+} ion is distorted octahedral formed by two N atoms from the Schiff base ligand, two O atoms from water molecules and two chloride anions acting as μ_2 bridges between the metal ions. The coordinated water molecules are linked to the uncoordinated ethanol molecules and chloride anions by $\text{O}-\text{H}\cdots\text{O}$ and $\text{O}-\text{H}\cdots\text{Cl}$ hydrogen bonds, although the assignment of some of these is tentative. A weak intermolecular $\text{O}-\text{H}\cdots\text{N}$ interaction within the ligand is also observed.

Related literature

For related structures, see: Kelly *et al.* (2005); Garoufis *et al.* (1998); Li *et al.* (2005); Deters *et al.* (2005); Sengottuvelan *et al.* (2008).



Experimental

Crystal data

$[\text{Ni}_2\text{Cl}_2(\text{C}_{20}\text{H}_{18}\text{N}_4)(\text{H}_2\text{O})_4]\text{Cl}_2 \cdot 2\text{C}_2\text{H}_5\text{O}$
 $M_r = 737.80$
Orthorhombic, $P2_12_12_1$
 $a = 13.078$ (2) Å
 $b = 13.575$ (2) Å
 $c = 17.873$ (4) Å

$V = 3173.06$ (10) Å³
 $Z = 4$
Mo $K\alpha$ radiation
 $\mu = 1.57$ mm⁻¹
 $T = 173$ (2) K
 $0.14 \times 0.12 \times 0.10$ mm

Data collection

Nonius KappaCCD diffractometer
Absorption correction: none
13155 measured reflections

8765 independent reflections
6892 reflections with $I > 2\sigma(I)$

Refinement

$R[F^2 > 2\sigma(F^2)] = 0.042$
 $wR(F^2) = 0.096$
 $S = 1.04$
8765 reflections
385 parameters
8 restraints

H atoms treated by a mixture of independent and constrained refinement

$\Delta\rho_{\text{max}} = 0.61$ e Å⁻³
 $\Delta\rho_{\text{min}} = -0.63$ e Å⁻³
Absolute structure: Flack (1983),
3623 Friedel pairs
Flack parameter: 0.005 (12)

Table 1

Selected bond lengths (Å).

Ni1—N1	2.071 (3)	Ni2—N4	2.063 (2)
Ni1—N2	2.073 (3)	Ni2—N3	2.077 (3)
Ni1—O1	2.072 (2)	Ni2—O3	2.087 (2)
Ni1—O2	2.085 (2)	Ni2—O4	2.097 (2)
Ni1—Cl2	2.3985 (8)	Ni2—Cl2	2.3778 (8)
Ni1—Cl1	2.4323 (8)	Ni2—Cl1	2.4331 (8)

Table 2

Hydrogen-bond geometry (Å, °).

$D-\text{H}\cdots A$	$D-\text{H}$	$\text{H}\cdots A$	$D\cdots A$	$D-\text{H}\cdots A$
O1—HW1A \cdots O5 ⁱ	0.888 (19)	1.98 (3)	2.781 (3)	150 (4)
O1—HW1B \cdots Cl3 ⁱ	0.934 (18)	2.175 (19)	3.107 (2)	176 (4)
O2—HW2A \cdots Cl3 ⁱ	0.916 (19)	2.21 (2)	3.104 (3)	165 (4)
O2—HW2B \cdots Cl4	0.942 (19)	2.122 (19)	3.064 (3)	179 (4)
O3—HW3A \cdots O5 ⁱ	0.939 (19)	1.87 (2)	2.787 (3)	163 (4)
O3—HW3B \cdots Cl3 ⁱⁱ	0.919 (18)	2.215 (19)	3.133 (2)	176 (4)
O4—HW4A \cdots O6 ⁱⁱ	0.922 (19)	1.79 (2)	2.702 (4)	168 (4)
O4—HW4B \cdots Cl3 ⁱⁱ	0.921 (19)	2.27 (2)	3.136 (3)	157 (4)
O5—H1A \cdots O1 ⁱⁱⁱ	0.84	1.96	2.781 (3)	166
O6—H2A \cdots O4 ^{iv}	0.84	2.18	2.702 (4)	121
O6—H2A \cdots N4 ^{iv}	0.84	2.66	3.467 (4)	163

Symmetry codes: (i) $-x + \frac{1}{2}, -y + 1, z + \frac{1}{2}$; (ii) $-x + 1, y + \frac{1}{2}, -z + \frac{1}{2}$; (iii) $-x + \frac{1}{2}, -y + 1, z - \frac{1}{2}$; (iv) $-x + 1, y - \frac{1}{2}, -z + \frac{1}{2}$.

Data collection: *COLLECT* (Nonius, 1998); cell refinement: *DENZO* (Nonius, 1998); data reduction: *DENZO*; program(s) used to solve structure: *SHELXS97* (Sheldrick, 2008); program(s) used to refine structure: *SHELXL97* (Sheldrick, 2008); molecular graphics: *PLATON* (Spek, 2003); software used to prepare material for publication: *SHELXL97*.

The authors thank the Agence Universitaire de la Francophonie for financial support (AUF-PSCI No. 6314PS804).

Supplementary data and figures for this paper are available from the IUCr electronic archives (Reference: HB2846).

References

- Deters, E. A., Goldcamp, M. J., Krause Bauer, J. A. & Baldwin, M. J. (2005). *Inorg. Chem.* **44**, 5222–5228.
- Flack, H. D. (1983). *Acta Cryst. A* **39**, 876–881.
- Garoufis, A., Kasselouri, S., Raptopoulou, C. P. & Terzis, A. (1998). *Polyhedron*, **17**, 1–7.
- Kelly, T. L., Milway, V. A., Grove, H., Niel, V., Abedin, T. S. M., Thompson, L. K., Zhao, L., Harvey, R. G., Miller, D. O., Leech, M., Goeta, A. E. & Howard, J. A. K. (2005). *Polyhedron*, **24**, 807–821.
- Li, Q. X., Luo, Q. H., Li, Y. Z., Duan, C. Y. & Tu, O. Y. (2005). *Inorg. Chim. Acta*, **358**, 504–512.
- Nonius (1998). *COLLECT* and *DENZO*. Nonius BV, Delft, The Netherlands.
- Sengottuvelan, N., Kang, S. K. & Kim, Y.-I. (2008). *Bull. Korean Chem. Soc.* **29**, 1784–1786.
- Sheldrick, G. M. (2008). *Acta Cryst. A* **64**, 112–122.
- Spek, A. L. (2003). *J. Appl. Cryst.* **36**, 7–13.

supplementary materials

Acta Cryst. (2009). E65, m100-m101 [doi:10.1107/S1600536808041299]

{ μ -*N,N'*-Bis[1-(2-pyridyl)ethylidene]benzene-1,2-diamine}di- μ -chlorido-bis[diaquanickel(II)] dichloride ethanol disolvate

F. B. Tamboura, M. Gaye, A. S. Sall, A. H. Barry and Y. Bah

Comment

The structure of the title compound, (I), is shown in Fig. 1. In the complex, the ligand coordinates the two metal ions via the two imine N atoms and the two pyridyl nitrogen atoms (one of each type per metal ion). Each metal ion is coordinated by two oxygen atoms from water molecules and two chloride anions (Table 1). Thus, the metal ions are in facial $N_2O_2Cl_2$ coordination environments and are connected by two chloride anions bridges to yield a binuclear complex. The Ni \cdots Ni distance spanned by the two chloride ion bridges is 3.9615 (16) Å. The Ni—Cl distances in (I) are longer than distances observed in other Ni^{II} coordination complexes (Li *et al.*, 2005; Deters *et al.*, 2005; Sengottuvelan *et al.*, 2008). Two chloride ions are present in the asymmetric unit to compensate for the doubly positive charge of the complex and hydrogen bonds (Table 2) help to establish the packing.

Experimental

To a mixture of 1 g (9.2 mmol) 1,2-diaminobenzene and 100 ml of ethanol was added dropwise a solution of 2.24 g (18.46 mmol) of 2-acetylpyridine. The resulting mixture was stirred under reflux for 60 min. A solution of 2.19 g (9.2 mmol) of NiCl₂·6H₂O was added. After cooling the solution was filtered and the solvent evaporated to dryness. The resulting yellow solid was recrystallized by diffusion of toluene in the ethanolic solution of the compound and green prisms of (I) were obtained (5.2 g; 75.00°) after one week. IR (cm⁻¹,KBr): 3372, 1595, 1570. Analysis calculated for C₂₄H₃₈Cl₄N₄O₆Ni₂: C 39.07, H 5.19, N 7.59 %; found: C 39.01, H 5.21, N 7.60 %.

Refinement

The water H atoms were located from difference maps and refined with distance restraints of 0.96±0.02Å. The other H atoms were placed geometrically (C—H = 0.95–0.99Å, O—H = 0.84Å) and refined as riding with $U_{iso}(H) = 1.2U_{eq}(C)$ or $1.5U_{eq}(methyl\ C, O)$. The refinement scheme has led to some very short intermolecular H \cdots H contacts and the location of the water H atoms should be regarded as less certain.

Figures

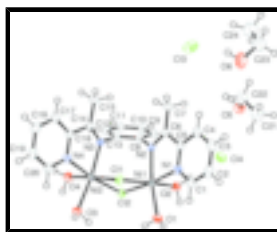


Fig. 1. The molecular structure of (I) with displacement ellipsoids for the non-hydrogen atoms plotted at the 50% probability level.

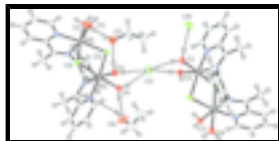


Fig. 2. The packing for (I): the broken lines stand for hydrogen bonds.

{ μ -*N,N'*-Bis[1-(2-pyridyl)ethylidene]benzene-1,2-diamine}di- μ -chlorido-bis[diaquanickel(II)] dichloride ethanol disolvate

Crystal data

[Ni₂Cl₂(C₂₀H₁₈N₄)(H₂O)₄]Cl₂·2C₂H₆O

M_r = 737.80

Orthorhombic, *P*2₁2₁2₁

Hall symbol: P 2ac 2ab

a = 13.078 (2) Å

b = 13.575 (2) Å

c = 17.873 (4) Å

V = 3173.06 (10) Å³

Z = 4

*F*₀₀₀ = 1528

D_x = 1.544 Mg m⁻³

Mo *K*α radiation

λ = 0.71073 Å

Cell parameters from 5114 reflections

θ = 1.0–30.0°

μ = 1.57 mm⁻¹

T = 173 (2) K

Prism, green

0.14 × 0.12 × 0.10 mm

Data collection

KappaCCD diffractometer

Radiation source: fine-focus sealed tube

Monochromator: graphite

T = 173(2) K

π and ω scans

Absorption correction: none

13155 measured reflections

8765 independent reflections

6892 reflections with *I* > 2σ(*I*)

*R*_{int} = 0.0000

θ_{max} = 30.0°

θ_{min} = 3.2°

h = -18→18

k = -19→19

l = -25→25

Refinement

Refinement on *F*²

Least-squares matrix: full

R[*F*² > 2σ(*F*²)] = 0.042

wR(*F*²) = 0.096

S = 1.04

8765 reflections

385 parameters

8 restraints

Primary atom site location: structure-invariant direct methods

Hydrogen site location: inferred from neighbouring sites

H atoms treated by a mixture of independent and constrained refinement

$$w = 1/[\sigma^2(F_o^2) + (0.0393P)^2 + 1.0903P]$$

where *P* = (*F_o*² + 2*F_c*²)/3

(Δ/σ)_{max} = 0.006

Δρ_{max} = 0.61 e Å⁻³

Δρ_{min} = -0.62 e Å⁻³

Extinction correction: none

Absolute structure: Flack (1983), 3623 Friedel pairs

Flack parameter: 0.005 (12)

Secondary atom site location: difference Fourier map

Special details

Geometry. All e.s.d.'s (except the e.s.d. in the dihedral angle between two l.s. planes) are estimated using the full covariance matrix. The cell e.s.d.'s are taken into account individually in the estimation of e.s.d.'s in distances, angles and torsion angles; correlations between e.s.d.'s in cell parameters are only used when they are defined by crystal symmetry. An approximate (isotropic) treatment of cell e.s.d.'s is used for estimating e.s.d.'s involving l.s. planes.

Refinement. Refinement on F^2 for ALL reflections except for 0 with very negative F^2 or flagged by the user for potential systematic errors. Weighted R -factors wR and all goodnesses of fit S are based on F^2 , conventional R -factors R are based on F , with F set to zero for negative F^2 . The observed criterion of $F^2 > \sigma(F^2)$ is used only for calculating `_R_factor_obs` etc. and is not relevant to the choice of reflections for refinement. R -factors based on F^2 are statistically about twice as large as those based on F , and R -factors based on ALL data will be even larger.

Fractional atomic coordinates and isotropic or equivalent isotropic displacement parameters (\AA^2)

	<i>x</i>	<i>y</i>	<i>z</i>	$U_{\text{iso}}^*/U_{\text{eq}}$
Ni1	0.35695 (3)	0.50399 (3)	0.39085 (2)	0.01943 (9)
Ni2	0.61577 (3)	0.50829 (3)	0.40432 (2)	0.01891 (9)
Cl1	0.48398 (6)	0.39219 (5)	0.44251 (5)	0.02207 (16)
Cl2	0.48535 (6)	0.62991 (5)	0.39662 (5)	0.02335 (17)
Cl3	0.28973 (9)	0.25896 (7)	-0.01232 (6)	0.0461 (3)
Cl4	0.08115 (8)	0.53903 (7)	0.24677 (6)	0.0400 (2)
O1	0.30614 (18)	0.53214 (16)	0.49855 (13)	0.0255 (5)
HW1A	0.351 (3)	0.519 (3)	0.5344 (18)	0.050*
HW1B	0.279 (3)	0.5959 (17)	0.497 (2)	0.050*
O2	0.25390 (18)	0.60814 (18)	0.35001 (14)	0.0256 (6)
HW2A	0.228 (3)	0.645 (3)	0.3889 (18)	0.050*
HW2B	0.200 (2)	0.587 (3)	0.319 (2)	0.050*
O3	0.64419 (18)	0.53720 (16)	0.51712 (13)	0.0245 (5)
HW3A	0.588 (2)	0.535 (3)	0.549 (2)	0.050*
HW3B	0.660 (3)	0.6031 (15)	0.517 (2)	0.050*
O4	0.72880 (18)	0.61205 (17)	0.37763 (14)	0.0253 (5)
HW4A	0.7962 (17)	0.594 (3)	0.370 (2)	0.050*
HW4B	0.743 (3)	0.651 (3)	0.4184 (17)	0.050*
O5	0.03498 (19)	0.43711 (17)	0.09927 (15)	0.0345 (6)
H1A	0.0755	0.4509	0.0644	0.050*
O6	0.0747 (2)	0.0506 (3)	0.1231 (2)	0.0660 (10)
H2A	0.1320	0.0246	0.1155	0.050*
N1	0.2552 (2)	0.3885 (2)	0.37723 (17)	0.0229 (6)
N2	0.38534 (19)	0.46316 (17)	0.28105 (15)	0.0190 (5)
N3	0.60457 (19)	0.46709 (18)	0.29271 (15)	0.0193 (6)
N4	0.71873 (19)	0.39336 (18)	0.39947 (16)	0.0197 (5)
C1	0.1904 (3)	0.3521 (3)	0.4284 (2)	0.0299 (8)
H1	0.1873	0.3825	0.4762	0.036*
C2	0.1276 (3)	0.2716 (3)	0.4140 (2)	0.0355 (9)
H2	0.0824	0.2476	0.4514	0.043*

supplementary materials

C3	0.1321 (3)	0.2272 (3)	0.3446 (2)	0.0348 (9)
H3	0.0899	0.1722	0.3334	0.042*
C4	0.1993 (3)	0.2642 (2)	0.2912 (2)	0.0282 (8)
H4	0.2034	0.2350	0.2430	0.034*
C5	0.2603 (2)	0.3446 (2)	0.3093 (2)	0.0227 (7)
C6	0.3333 (2)	0.3895 (2)	0.25517 (19)	0.0246 (7)
C7	0.3406 (3)	0.3484 (3)	0.1785 (2)	0.0370 (9)
H7A	0.2776	0.3631	0.1510	0.056*
H7B	0.3499	0.2768	0.1814	0.056*
H7C	0.3990	0.3779	0.1526	0.056*
C8	0.4461 (2)	0.5215 (2)	0.23195 (18)	0.0206 (7)
C9	0.3971 (3)	0.5831 (2)	0.1807 (2)	0.0271 (8)
H9	0.3250	0.5799	0.1751	0.032*
C10	0.4531 (3)	0.6488 (2)	0.1380 (2)	0.0291 (8)
H10	0.4192	0.6919	0.1043	0.035*
C11	0.5586 (3)	0.6515 (3)	0.1445 (2)	0.0296 (8)
H11	0.5972	0.6962	0.1149	0.036*
C12	0.6079 (3)	0.5888 (2)	0.1942 (2)	0.0274 (8)
H12	0.6804	0.5899	0.1981	0.033*
C13	0.5517 (2)	0.5246 (2)	0.23829 (18)	0.0205 (7)
C14	0.6560 (2)	0.3905 (2)	0.27341 (19)	0.0237 (7)
C15	0.6549 (3)	0.3448 (3)	0.1975 (2)	0.0386 (10)
H15A	0.6486	0.2731	0.2023	0.058*
H15B	0.7187	0.3607	0.1713	0.058*
H15C	0.5968	0.3705	0.1689	0.058*
C16	0.7215 (2)	0.3468 (2)	0.33302 (19)	0.0211 (7)
C17	0.7835 (3)	0.2657 (2)	0.3212 (2)	0.0266 (8)
H17	0.7858	0.2345	0.2736	0.032*
C18	0.8422 (3)	0.2308 (2)	0.3800 (2)	0.0314 (8)
H18	0.8847	0.1748	0.3734	0.038*
C19	0.8382 (3)	0.2780 (3)	0.4480 (2)	0.0324 (8)
H19	0.8780	0.2550	0.4889	0.039*
C20	0.7753 (3)	0.3597 (2)	0.4559 (2)	0.0267 (8)
H20	0.7725	0.3924	0.5028	0.032*
C21	-0.0361 (4)	0.3042 (3)	0.1739 (3)	0.0508 (12)
H21A	-0.0340	0.2328	0.1817	0.076*
H21B	-0.1056	0.3241	0.1603	0.076*
H21C	-0.0158	0.3378	0.2201	0.076*
C22	0.0361 (3)	0.3317 (3)	0.1123 (2)	0.0417 (10)
H22A	0.1062	0.3107	0.1258	0.050*
H22B	0.0163	0.2969	0.0658	0.050*
C23	0.0117 (4)	0.0366 (4)	0.0593 (3)	0.0704 (15)
H23A	-0.0561	0.0662	0.0694	0.084*
H23B	0.0015	-0.0350	0.0518	0.084*
C24	0.0527 (4)	0.0792 (4)	-0.0104 (3)	0.0676 (15)
H24A	0.0395	0.1503	-0.0111	0.101*
H24B	0.0193	0.0482	-0.0534	0.101*
H24C	0.1266	0.0675	-0.0129	0.101*

Atomic displacement parameters (\AA^2)

	U^{11}	U^{22}	U^{33}	U^{12}	U^{13}	U^{23}
Ni1	0.02046 (19)	0.01869 (19)	0.0192 (2)	-0.00053 (16)	0.00040 (15)	-0.00077 (17)
Ni2	0.02056 (19)	0.01757 (18)	0.0186 (2)	0.00017 (16)	-0.00013 (15)	-0.00029 (17)
Cl1	0.0228 (4)	0.0177 (3)	0.0257 (4)	-0.0007 (3)	0.0004 (3)	0.0026 (3)
Cl2	0.0246 (4)	0.0183 (3)	0.0272 (4)	0.0005 (3)	-0.0005 (4)	-0.0005 (3)
Cl3	0.0681 (7)	0.0345 (5)	0.0358 (6)	0.0194 (5)	0.0085 (5)	0.0105 (4)
Cl4	0.0453 (6)	0.0444 (5)	0.0303 (5)	-0.0074 (4)	-0.0043 (4)	-0.0064 (4)
O1	0.0302 (13)	0.0273 (12)	0.0188 (13)	0.0035 (10)	-0.0009 (10)	-0.0024 (10)
O2	0.0262 (14)	0.0255 (12)	0.0252 (15)	0.0027 (10)	-0.0005 (11)	-0.0031 (10)
O3	0.0289 (13)	0.0241 (11)	0.0206 (13)	-0.0015 (10)	0.0005 (10)	-0.0034 (9)
O4	0.0261 (12)	0.0250 (12)	0.0250 (14)	-0.0031 (10)	0.0020 (11)	0.0021 (10)
O5	0.0393 (15)	0.0381 (13)	0.0259 (14)	-0.0034 (11)	0.0030 (12)	0.0069 (11)
O6	0.0325 (16)	0.109 (3)	0.056 (2)	-0.0077 (17)	-0.0038 (16)	0.001 (2)
N1	0.0230 (15)	0.0211 (13)	0.0246 (16)	0.0015 (11)	-0.0007 (12)	0.0003 (12)
N2	0.0198 (13)	0.0165 (12)	0.0208 (14)	0.0000 (10)	0.0017 (11)	0.0008 (10)
N3	0.0207 (13)	0.0199 (13)	0.0172 (14)	-0.0013 (10)	0.0008 (11)	-0.0003 (10)
N4	0.0204 (13)	0.0178 (12)	0.0209 (15)	0.0001 (10)	0.0009 (12)	0.0026 (11)
C1	0.0251 (18)	0.0332 (18)	0.032 (2)	-0.0022 (15)	0.0035 (16)	0.0010 (16)
C2	0.026 (2)	0.0381 (19)	0.042 (2)	-0.0064 (16)	0.0056 (17)	0.0087 (17)
C3	0.031 (2)	0.0239 (17)	0.049 (3)	-0.0091 (16)	-0.0048 (19)	0.0004 (16)
C4	0.0275 (18)	0.0246 (17)	0.032 (2)	-0.0016 (15)	-0.0048 (16)	-0.0004 (15)
C5	0.0212 (17)	0.0207 (16)	0.0264 (19)	0.0012 (13)	0.0000 (14)	0.0026 (14)
C6	0.0275 (18)	0.0236 (16)	0.0226 (18)	0.0038 (14)	-0.0018 (14)	-0.0021 (14)
C7	0.047 (2)	0.037 (2)	0.027 (2)	-0.0130 (18)	0.0027 (18)	-0.0100 (16)
C8	0.0257 (16)	0.0181 (15)	0.0180 (16)	-0.0008 (12)	0.0016 (13)	0.0004 (12)
C9	0.0247 (18)	0.0272 (17)	0.029 (2)	0.0040 (14)	-0.0031 (15)	0.0005 (14)
C10	0.038 (2)	0.0267 (17)	0.0228 (19)	0.0036 (15)	-0.0013 (16)	0.0075 (14)
C11	0.038 (2)	0.0268 (17)	0.024 (2)	-0.0041 (15)	0.0027 (16)	0.0071 (14)
C12	0.0257 (18)	0.0294 (17)	0.0270 (19)	-0.0030 (14)	0.0017 (15)	0.0016 (14)
C13	0.0257 (16)	0.0183 (15)	0.0176 (16)	-0.0007 (12)	0.0001 (13)	-0.0016 (12)
C14	0.0236 (17)	0.0240 (16)	0.0235 (18)	-0.0021 (14)	0.0036 (14)	-0.0023 (13)
C15	0.046 (2)	0.044 (2)	0.025 (2)	0.0153 (19)	-0.0069 (18)	-0.0112 (17)
C16	0.0203 (16)	0.0211 (15)	0.0220 (18)	-0.0013 (13)	0.0003 (14)	0.0006 (13)
C17	0.0283 (19)	0.0249 (17)	0.026 (2)	0.0004 (14)	0.0017 (15)	-0.0005 (14)
C18	0.0305 (19)	0.0247 (16)	0.039 (2)	0.0076 (14)	0.0005 (17)	0.0000 (16)
C19	0.0262 (19)	0.0327 (19)	0.038 (2)	0.0077 (15)	-0.0058 (17)	0.0054 (16)
C20	0.0284 (18)	0.0288 (17)	0.0230 (19)	0.0004 (14)	-0.0031 (15)	0.0018 (14)
C21	0.053 (3)	0.049 (2)	0.050 (3)	-0.010 (2)	-0.002 (2)	0.015 (2)
C22	0.044 (2)	0.038 (2)	0.044 (3)	0.0019 (17)	0.000 (2)	0.0052 (18)
C23	0.042 (3)	0.099 (4)	0.070 (4)	-0.009 (3)	-0.003 (3)	-0.013 (3)
C24	0.065 (3)	0.096 (4)	0.042 (3)	-0.011 (3)	0.007 (3)	-0.001 (3)

Geometric parameters (\AA , $^\circ$)

Ni1—N1	2.071 (3)	C5—C6	1.490 (5)
Ni1—N2	2.073 (3)	C6—C7	1.482 (5)

supplementary materials

Ni1—O1	2.072 (2)	C7—H7A	0.9800
Ni1—O2	2.085 (2)	C7—H7B	0.9800
Ni1—C12	2.3985 (8)	C7—H7C	0.9800
Ni1—C11	2.4323 (8)	C8—C13	1.386 (4)
Ni2—N4	2.063 (2)	C8—C9	1.396 (4)
Ni2—N3	2.077 (3)	C9—C10	1.384 (5)
Ni2—O3	2.087 (2)	C9—H9	0.9500
Ni2—O4	2.097 (2)	C10—C11	1.385 (5)
Ni2—C12	2.3778 (8)	C10—H10	0.9500
Ni2—C11	2.4331 (8)	C11—C12	1.390 (5)
O1—HW1A	0.888 (19)	C11—H11	0.9500
O1—HW1B	0.934 (18)	C12—C13	1.386 (4)
O2—HW2A	0.916 (19)	C12—H12	0.9500
O2—HW2B	0.942 (19)	C14—C16	1.490 (5)
O3—HW3A	0.939 (19)	C14—C15	1.493 (5)
O3—HW3B	0.919 (18)	C15—H15A	0.9800
O4—HW4A	0.922 (19)	C15—H15B	0.9800
O4—HW4B	0.921 (19)	C15—H15C	0.9800
O5—C22	1.450 (4)	C16—C17	1.384 (5)
O5—H1A	0.8400	C17—C18	1.385 (5)
O6—C23	1.418 (6)	C17—H17	0.9500
O6—H2A	0.8400	C18—C19	1.374 (5)
N1—C1	1.340 (4)	C18—H18	0.9500
N1—C5	1.354 (5)	C19—C20	1.389 (5)
N2—C6	1.295 (4)	C19—H19	0.9500
N2—C8	1.424 (4)	C20—H20	0.9500
N3—C14	1.285 (4)	C21—C22	1.498 (6)
N3—C13	1.426 (4)	C21—H21A	0.9800
N4—C20	1.332 (4)	C21—H21B	0.9800
N4—C16	1.346 (4)	C21—H21C	0.9800
C1—C2	1.391 (5)	C22—H22A	0.9900
C1—H1	0.9500	C22—H22B	0.9900
C2—C3	1.381 (6)	C23—C24	1.475 (7)
C2—H2	0.9500	C23—H23A	0.9900
C3—C4	1.390 (5)	C23—H23B	0.9900
C3—H3	0.9500	C24—H24A	0.9800
C4—C5	1.390 (5)	C24—H24B	0.9800
C4—H4	0.9500	C24—H24C	0.9800
N1—Ni1—O1	92.45 (11)	N2—C6—C5	114.9 (3)
N1—Ni1—N2	78.55 (11)	C7—C6—C5	119.2 (3)
O1—Ni1—N2	170.54 (10)	C6—C7—H7A	109.5
N1—Ni1—O2	93.27 (10)	C6—C7—H7B	109.5
O1—Ni1—O2	89.59 (9)	H7A—C7—H7B	109.5
N2—Ni1—O2	88.03 (10)	C6—C7—H7C	109.5
N1—Ni1—C12	174.04 (8)	H7A—C7—H7C	109.5
O1—Ni1—C12	93.04 (7)	H7B—C7—H7C	109.5
N2—Ni1—C12	96.08 (7)	C13—C8—C9	119.5 (3)
O2—Ni1—C12	89.10 (7)	C13—C8—N2	121.5 (3)
N1—Ni1—C11	90.64 (8)	C9—C8—N2	118.8 (3)

O1—Ni1—C11	88.94 (7)	C10—C9—C8	120.4 (3)
N2—Ni1—C11	94.02 (7)	C10—C9—H9	119.8
O2—Ni1—C11	175.89 (7)	C8—C9—H9	119.8
C12—Ni1—C11	87.14 (3)	C9—C10—C11	119.8 (3)
N4—Ni2—N3	78.58 (11)	C9—C10—H10	120.1
N4—Ni2—O3	93.82 (10)	C11—C10—H10	120.1
N3—Ni2—O3	172.26 (10)	C10—C11—C12	120.0 (3)
N4—Ni2—O4	92.20 (9)	C10—C11—H11	120.0
N3—Ni2—O4	90.69 (10)	C12—C11—H11	120.0
O3—Ni2—O4	88.16 (9)	C13—C12—C11	120.2 (3)
N4—Ni2—C12	172.31 (8)	C13—C12—H12	119.9
N3—Ni2—C12	94.64 (7)	C11—C12—H12	119.9
O3—Ni2—C12	93.04 (7)	C12—C13—C8	120.1 (3)
O4—Ni2—C12	91.50 (7)	C12—C13—N3	118.3 (3)
N4—Ni2—C11	89.10 (7)	C8—C13—N3	121.5 (3)
N3—Ni2—C11	92.58 (7)	N3—C14—C16	115.5 (3)
O3—Ni2—C11	88.68 (7)	N3—C14—C15	125.1 (3)
O4—Ni2—C11	176.66 (8)	C16—C14—C15	119.3 (3)
C12—Ni2—C11	87.59 (3)	C14—C15—H15A	109.5
Ni1—C11—Ni2	88.46 (3)	C14—C15—H15B	109.5
Ni2—C12—Ni1	90.56 (3)	H15A—C15—H15B	109.5
Ni1—O1—HW1A	115 (3)	C14—C15—H15C	109.5
Ni1—O1—HW1B	106 (3)	H15A—C15—H15C	109.5
HW1A—O1—HW1B	116 (4)	H15B—C15—H15C	109.5
Ni1—O2—HW2A	110 (3)	N4—C16—C17	121.6 (3)
Ni1—O2—HW2B	119 (2)	N4—C16—C14	115.4 (3)
HW2A—O2—HW2B	110 (4)	C17—C16—C14	123.0 (3)
Ni2—O3—HW3A	117 (3)	C16—C17—C18	118.7 (3)
Ni2—O3—HW3B	102 (3)	C16—C17—H17	120.7
HW3A—O3—HW3B	103 (3)	C18—C17—H17	120.7
Ni2—O4—HW4A	122 (3)	C19—C18—C17	119.5 (3)
Ni2—O4—HW4B	110 (3)	C19—C18—H18	120.3
HW4A—O4—HW4B	94 (3)	C17—C18—H18	120.3
C22—O5—H1A	109.5	C18—C19—C20	119.0 (3)
C23—O6—H2A	109.5	C18—C19—H19	120.5
C1—N1—C5	118.8 (3)	C20—C19—H19	120.5
C1—N1—Ni1	127.2 (2)	N4—C20—C19	121.7 (3)
C5—N1—Ni1	114.0 (2)	N4—C20—H20	119.1
C6—N2—C8	120.2 (3)	C19—C20—H20	119.1
C6—N2—Ni1	116.8 (2)	C22—C21—H21A	109.5
C8—N2—Ni1	122.33 (19)	C22—C21—H21B	109.5
C14—N3—C13	120.9 (3)	H21A—C21—H21B	109.5
C14—N3—Ni2	116.0 (2)	C22—C21—H21C	109.5
C13—N3—Ni2	122.83 (19)	H21A—C21—H21C	109.5
C20—N4—C16	119.5 (3)	H21B—C21—H21C	109.5
C20—N4—Ni2	126.2 (2)	O5—C22—C21	111.0 (3)
C16—N4—Ni2	114.2 (2)	O5—C22—H22A	109.4
N1—C1—C2	122.5 (3)	C21—C22—H22A	109.4
N1—C1—H1	118.8	O5—C22—H22B	109.4

supplementary materials

C2—C1—H1	118.8	C21—C22—H22B	109.4
C3—C2—C1	118.9 (3)	H22A—C22—H22B	108.0
C3—C2—H2	120.6	O6—C23—C24	114.5 (4)
C1—C2—H2	120.6	O6—C23—H23A	108.6
C2—C3—C4	119.1 (3)	C24—C23—H23A	108.6
C2—C3—H3	120.5	O6—C23—H23B	108.6
C4—C3—H3	120.5	C24—C23—H23B	108.6
C5—C4—C3	119.1 (3)	H23A—C23—H23B	107.6
C5—C4—H4	120.5	C23—C24—H24A	109.5
C3—C4—H4	120.5	C23—C24—H24B	109.5
N1—C5—C4	121.7 (3)	H24A—C24—H24B	109.5
N1—C5—C6	115.8 (3)	C23—C24—H24C	109.5
C4—C5—C6	122.5 (3)	H24A—C24—H24C	109.5
N2—C6—C7	126.0 (3)	H24B—C24—H24C	109.5

Hydrogen-bond geometry (\AA , $^\circ$)

$D-H\cdots A$	$D-H$	$H\cdots A$	$D\cdots A$	$D-H\cdots A$
O1—HW1A \cdots O5 ⁱ	0.888 (19)	1.98 (3)	2.781 (3)	150 (4)
O1—HW1B \cdots Cl3 ⁱ	0.934 (18)	2.175 (19)	3.107 (2)	176 (4)
O2—HW2A \cdots Cl3 ⁱ	0.916 (19)	2.21 (2)	3.104 (3)	165 (4)
O2—HW2B \cdots Cl4	0.942 (19)	2.122 (19)	3.064 (3)	179 (4)
O3—HW3A \cdots O5 ⁱ	0.939 (19)	1.87 (2)	2.787 (3)	163 (4)
O3—HW3B \cdots Cl3 ⁱⁱ	0.919 (18)	2.215 (19)	3.133 (2)	176 (4)
O4—HW4A \cdots O6 ⁱⁱ	0.922 (19)	1.79 (2)	2.702 (4)	168 (4)
O4—HW4B \cdots Cl3 ⁱⁱ	0.921 (19)	2.27 (2)	3.136 (3)	157 (4)
O5—H1A \cdots O1 ⁱⁱⁱ	0.84	1.96	2.781 (3)	166
O6—H2A \cdots O4 ^{iv}	0.84	2.18	2.702 (4)	121
O6—H2A \cdots N4 ^{iv}	0.84	2.66	3.467 (4)	163

Symmetry codes: (i) $-x+1/2, -y+1, z+1/2$; (ii) $-x+1, y+1/2, -z+1/2$; (iii) $-x+1/2, -y+1, z-1/2$; (iv) $-x+1, y-1/2, -z+1/2$.

Fig. 1

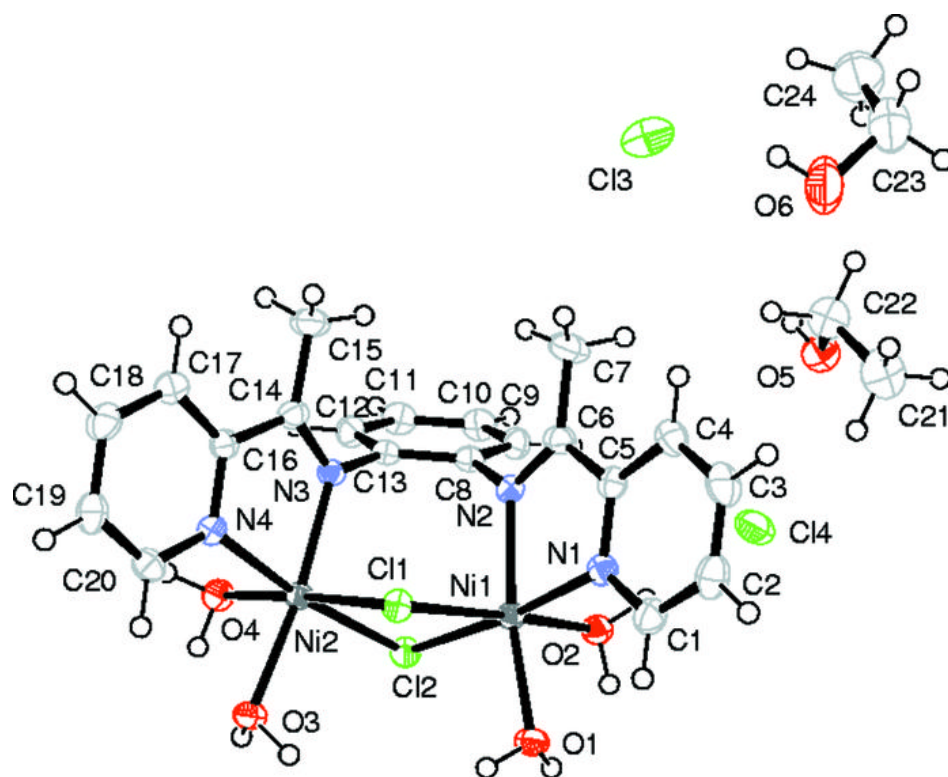


Fig. 2

