

Acta Crystallographica Section E

## Structure Reports

Online

ISSN 1600-5368

## 2-(3-Methyl-2-nitrophenyl)-4,5-dihydro-1,3-oxazole

Dongwei Lei,<sup>a</sup> Huibin Yang,<sup>b</sup> Bin Li<sup>b</sup> and Zhuo Kang<sup>b\*</sup><sup>a</sup>Shenyang Institute of Chemical Technology, Shenyang 110142, People's Republic of China, and <sup>b</sup>Agrochemicals Division, Shenyang Research Institute of Chemical Industry, Shenyang 110021, People's Republic of China

Correspondence e-mail: kangzhuo@sinochem.com

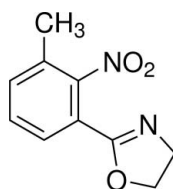
Received 27 November 2008; accepted 4 December 2008

Key indicators: single-crystal X-ray study;  $T = 296$  K; mean  $\sigma(\text{C}-\text{C}) = 0.003$  Å;  $R$  factor = 0.037;  $wR$  factor = 0.110; data-to-parameter ratio = 10.4.

In the title compound,  $\text{C}_{10}\text{H}_{10}\text{N}_2\text{O}_3$ , an intermediate in the synthesis of anthranilamide insecticides, all the non-H atoms except the nitro-group O atom lie on a crystallographic mirror plane. The H atoms of the methyl group are disordered over two sets of sites with equal occupancies. In the crystal structure,  $\text{C}-\text{H}\cdots\text{N}$  links lead to chains of molecules propagating in [100].

## Related literature

For background to anthranilamide compounds, a new class of insecticides, see: Lahm *et al.* (2003, 2005).



## Experimental

## Crystal data

 $\text{C}_{10}\text{H}_{10}\text{N}_2\text{O}_3$  $M_r = 206.20$ 

Monoclinic,  $P2_1/m$   
 $a = 7.7767$  (10) Å  
 $b = 7.3370$  (10) Å  
 $c = 8.6468$  (12) Å  
 $\beta = 99.414$  (2)°  
 $V = 486.72$  (11) Å<sup>3</sup>

$Z = 2$   
 Mo  $K\alpha$  radiation  
 $\mu = 0.11$  mm<sup>-1</sup>  
 $T = 296$  (2) K  
 $0.24 \times 0.22 \times 0.18$  mm

## Data collection

Bruker SMART CCD diffractometer  
 Absorption correction: multi-scan (SADABS; Bruker, 2001)  
 $T_{\min} = 0.834$ ,  $T_{\max} = 1.000$   
 (expected range = 0.818–0.981)

2462 measured reflections  
 937 independent reflections  
 842 reflections with  $I > 2\sigma(I)$   
 $R_{\text{int}} = 0.011$

## Refinement

$R[F^2 > 2\sigma(F^2)] = 0.037$   
 $wR(F^2) = 0.110$   
 $S = 1.07$   
 937 reflections

90 parameters  
 H-atom parameters constrained  
 $\Delta\rho_{\max} = 0.17$  e Å<sup>-3</sup>  
 $\Delta\rho_{\min} = -0.15$  e Å<sup>-3</sup>

Table 1

Hydrogen-bond geometry (Å, °).

$D-H\cdots A$	$D-H$	$H\cdots A$	$D\cdots A$	$D-H\cdots A$
$\text{C4}-\text{H4}\cdots\text{N1}^i$	0.93	2.60	3.508 (3)	167

Symmetry code: (i)  $x - 1, y, z$ .

Data collection: SMART (Bruker, 2005); cell refinement: SAINT (Bruker, 2005); data reduction: SAINT; program(s) used to solve structure: SHELXS97 (Sheldrick, 2008); program(s) used to refine structure: SHELXL97 (Sheldrick, 2008); molecular graphics: SHELXTL (Sheldrick, 2008); software used to prepare material for publication: SHELXTL.

Supplementary data and figures for this paper are available from the IUCr electronic archives (Reference: HB2868).

## References

- Bruker (2005). SMART and SAINT. Bruker AXS Inc., Madison, Wisconsin, USA.  
 Lahm, G. P., Selby, T. P., Freudenberger, J. H., Stevenson, T. M., Myers, B. J., Seburyamo, G., Smith, B. K., Flexner, L., Clark, C. E. & Cordova, D. (2005). *Bioorg. Med. Chem. Lett.* **15**, 4898–4906.  
 Lahm, G. P., Selby, T. P. & Stevenson, T. M. (2003). International Patent WO 03/015 519.  
 Sheldrick, G. M. (2008). *Acta Cryst.* **A64**, 112–122.

**supplementary materials**

*Acta Cryst.* (2009). E65, o54 [ doi:10.1107/S1600536808040920 ]

## 2-(3-Methyl-2-nitrophenyl)-4,5-dihydro-1,3-oxazole

D. Lei, H. Yang, B. Li and Z. Kang

### Comment

Anthranilamide compounds as a new class of insecticides are characterized by their high levels of insecticidal activity, no-cross resistance to existing insecticides, safety to off-target animal and low toxicity to mammals (Lahm *et al.* 2003, 2005)

The title compound (I) as an intermediate for preparing Chlorantraniliprole analogs plays an important role in identifying the configuration of two possible products.

In the molecular structure of (I), (Fig. 1) all the non-hydrogen atoms except the nitro-group O atom lie on a crystallographic mirror plane. In the crystal, C—H $\cdots$ N links lead to chains of molecules propagating in [100].

### Experimental

2-Bromoethanamine hydrobromide (10.25 g, 50 mmol) and 3-methyl-2-nitrobenzoyl chloride (9.98 g, 50 mmol) were added into dichloromethane (200 ml), then triethylamine (16.70 g, 165 mmol) was added. The mixture was heated to reflux for 14 h and cooled down to room temperature, washed with water and brine, dried by anhydrous sulfate magnesium, then evaporated to give the title compound as a white solid. The product was dissolved in dichloromethane and left to stand at room temperature and colourless blocks of (I) were obtained.

Anal. Calcd for C<sub>10</sub>H<sub>10</sub>N<sub>2</sub>O<sub>3</sub>: C, 58.25; H, 4.89; N, 13.59; O, 23.28. Found: C, 58.20; H, 4.90; N, 13.61; O, 23.25 <sup>1</sup>H NMR(CDCl<sub>3</sub>): 2.35 (s, 3H, CH<sub>3</sub>), 4.06 (t, J=9.8 Hz, 2H, CH<sub>2</sub>), 4.40 (t, J=9.6 Hz, 2H, CH<sub>2</sub>), 7.41–7.43(m, 2H), 7.78–7.81 (m, 1H).

### Refinement

Although all H atoms were visible in difference maps, they were finally placed in geometrically calculated positions, with C—H distances in the range 0.93–0.96 Å, and included in the final refinement in the riding model approximation, with  $U_{\text{iso}}(\text{H}) = 1.2U_{\text{eq}}(\text{C})$  for aromatic and  $U_{\text{iso}}(\text{H}) = 1.5U_{\text{eq}}(\text{C})$  for methyl H atoms.

### Figures

Fig. 1. The molecular structure of (I), with 30% probability displacement ellipsoids for the non-hydrogen atoms. Symmetry code: A x, 1/2–y, z.

## 2-(3-Methyl-2-nitrophenyl)-4,5-dihydro-1,3-oxazole

### Crystal data

C<sub>10</sub>H<sub>10</sub>N<sub>2</sub>O<sub>3</sub>

$F_{000} = 216$

# supplementary materials

---

$M_r = 206.20$

Monoclinic,  $P2_1/m$

$a = 7.7767$  (10) Å

$b = 7.3370$  (10) Å

$c = 8.6468$  (12) Å

$\beta = 99.414$  (2)°

$V = 486.72$  (11) Å<sup>3</sup>

$Z = 2$

$D_x = 1.407$  Mg m<sup>-3</sup>

Mo  $K\alpha$  radiation

$\lambda = 0.71073$  Å

Cell parameters from 1713 reflections

$\theta = 2.7$ – $27.9$ °

$\mu = 0.11$  mm<sup>-1</sup>

$T = 296$  (2) K

BLOCK, colourless

$0.24 \times 0.22 \times 0.18$  mm

## Data collection

Bruker SMART CCD  
diffractometer

Radiation source: fine-focus sealed tube

Monochromator: graphite

$T = 296$ (2) K

$\omega$  scans

Absorption correction: multi-scan  
(SADABS; Bruker, 2001)

$T_{\min} = 0.834$ ,  $T_{\max} = 1.000$

2462 measured reflections

937 independent reflections

842 reflections with  $I > 2\sigma(I)$

$R_{\text{int}} = 0.011$

$\theta_{\text{max}} = 25.0$ °

$\theta_{\text{min}} = 2.4$ °

$h = -9$ → $9$

$k = -6$ → $8$

$l = -10$ → $9$

## Refinement

Refinement on  $F^2$

Least-squares matrix: full

$R[F^2 > 2\sigma(F^2)] = 0.037$

$wR(F^2) = 0.110$

$S = 1.07$

937 reflections

90 parameters

Primary atom site location: structure-invariant direct  
methods

Secondary atom site location: difference Fourier map

Hydrogen site location: inferred from neighbouring  
sites

H-atom parameters constrained

$$w = 1/[\sigma^2(F_o^2) + (0.0583P)^2 + 0.1052P]$$

where  $P = (F_o^2 + 2F_c^2)/3$

$(\Delta/\sigma)_{\text{max}} < 0.001$

$\Delta\rho_{\text{max}} = 0.17$  e Å<sup>-3</sup>

$\Delta\rho_{\text{min}} = -0.15$  e Å<sup>-3</sup>

## Special details

**Geometry.** All e.s.d.'s (except the e.s.d. in the dihedral angle between two l.s. planes) are estimated using the full covariance matrix. The cell e.s.d.'s are taken into account individually in the estimation of e.s.d.'s in distances, angles and torsion angles; correlations between e.s.d.'s in cell parameters are only used when they are defined by crystal symmetry. An approximate (isotropic) treatment of cell e.s.d.'s is used for estimating e.s.d.'s involving l.s. planes.

**Refinement.** Refinement of  $F^2$  against ALL reflections. The weighted  $R$ -factor  $wR$  and goodness of fit  $S$  are based on  $F^2$ , conventional  $R$ -factors  $R$  are based on  $F$ , with  $F$  set to zero for negative  $F^2$ . The threshold expression of  $F^2 > \sigma(F^2)$  is used only for calculating  $R$ -factors(gt) *etc.* and is not relevant to the choice of reflections for refinement.  $R$ -factors based on  $F^2$  are statistically about twice as large as those based on  $F$ , and  $R$ -factors based on ALL data will be even larger.

Fractional atomic coordinates and isotropic or equivalent isotropic displacement parameters ( $\text{\AA}^2$ )

	x	y	z	$U_{\text{iso}}^*/U_{\text{eq}}$	Occ. (<1)
O1	0.2190 (2)	0.2500	1.12373 (17)	0.0794 (6)	
O2	0.33918 (12)	0.10351 (17)	0.61731 (13)	0.0628 (4)	
N1	0.4057 (2)	0.2500	0.95534 (19)	0.0617 (6)	
N2	0.27535 (19)	0.2500	0.64083 (17)	0.0428 (4)	
C1	-0.0249 (3)	0.2500	0.4054 (2)	0.0520 (5)	
H1A	0.0705	0.3268	0.3893	0.078*	0.50
H1B	-0.1309	0.2952	0.3449	0.078*	0.50
H1C	-0.0041	0.1280	0.3728	0.078*	0.50
C2	-0.0410 (2)	0.2500	0.5759 (2)	0.0430 (5)	
C3	-0.2030 (3)	0.2500	0.6245 (3)	0.0533 (5)	
H3	-0.3034	0.2500	0.5495	0.064*	
C4	-0.2181 (3)	0.2500	0.7801 (3)	0.0630 (6)	
H4	-0.3281	0.2500	0.8092	0.076*	
C5	-0.0709 (3)	0.2500	0.8946 (3)	0.0589 (6)	
H5	-0.0828	0.2500	0.9998	0.071*	
C6	0.0946 (2)	0.2500	0.8531 (2)	0.0434 (5)	
C7	0.1040 (2)	0.2500	0.6938 (2)	0.0381 (4)	
C8	0.2508 (2)	0.2500	0.9762 (2)	0.0428 (5)	
C9	0.3878 (3)	0.2500	1.2242 (3)	0.0671 (7)	
H9	0.4021	0.1424	1.2902	0.081*	
C10	0.5156 (3)	0.2500	1.1111 (2)	0.0580 (6)	
H10	0.5890	0.3576	1.1251	0.070*	

Atomic displacement parameters ( $\text{\AA}^2$ )

	$U^{11}$	$U^{22}$	$U^{33}$	$U^{12}$	$U^{13}$	$U^{23}$
O1	0.0487 (9)	0.1510 (17)	0.0384 (8)	0.000	0.0066 (7)	0.000
O2	0.0475 (6)	0.0714 (8)	0.0701 (8)	0.0137 (5)	0.0117 (5)	-0.0128 (5)
N1	0.0353 (9)	0.1100 (16)	0.0376 (9)	0.000	-0.0005 (7)	0.000
N2	0.0323 (8)	0.0582 (10)	0.0363 (8)	0.000	0.0013 (6)	0.000
C1	0.0451 (11)	0.0637 (13)	0.0437 (11)	0.000	-0.0033 (8)	0.000
C2	0.0358 (10)	0.0443 (10)	0.0463 (10)	0.000	-0.0010 (8)	0.000
C3	0.0316 (9)	0.0658 (13)	0.0594 (13)	0.000	-0.0020 (8)	0.000
C4	0.0322 (10)	0.0932 (17)	0.0649 (14)	0.000	0.0114 (9)	0.000
C5	0.0397 (11)	0.0885 (16)	0.0505 (12)	0.000	0.0130 (9)	0.000
C6	0.0347 (10)	0.0516 (11)	0.0434 (10)	0.000	0.0046 (8)	0.000
C7	0.0290 (8)	0.0422 (10)	0.0428 (10)	0.000	0.0047 (7)	0.000
C8	0.0408 (10)	0.0521 (11)	0.0352 (9)	0.000	0.0057 (7)	0.000
C9	0.0550 (13)	0.1013 (19)	0.0413 (11)	0.000	-0.0030 (10)	0.000
C10	0.0445 (11)	0.0834 (16)	0.0418 (11)	0.000	-0.0058 (8)	0.000

Geometric parameters ( $\text{\AA}$ ,  $^\circ$ )

O1—C8	1.339 (2)	C3—C4	1.370 (3)
O1—C9	1.451 (3)	C3—H3	0.9300

## supplementary materials

---

O2—N2	1.2149 (13)	C4—C5	1.385 (3)
N1—C8	1.247 (2)	C4—H4	0.9300
N1—C10	1.472 (2)	C5—C6	1.391 (3)
N2—O2 <sup>i</sup>	1.2149 (13)	C5—H5	0.9300
N2—C7	1.478 (2)	C6—C7	1.391 (3)
C1—C2	1.501 (3)	C6—C8	1.478 (3)
C1—H1A	0.9600	C9—C10	1.504 (3)
C1—H1B	0.9600	C9—H9	0.9700
C1—H1C	0.9600	C9—H9 <sup>i</sup>	0.9700
C2—C7	1.391 (2)	C10—H10	0.9700
C2—C3	1.391 (3)	C10—H10 <sup>i</sup>	0.9700
C8—O1—C9	106.31 (16)	C6—C5—H5	119.8
C8—N1—C10	107.34 (17)	C7—C6—C5	117.07 (18)
O2 <sup>i</sup> —N2—O2	124.43 (16)	C7—C6—C8	122.89 (17)
O2 <sup>i</sup> —N2—C7	117.75 (8)	C5—C6—C8	120.04 (18)
O2—N2—C7	117.75 (8)	C2—C7—C6	123.93 (17)
C2—C1—H1A	109.5	C2—C7—N2	115.90 (16)
C2—C1—H1B	109.5	C6—C7—N2	120.18 (15)
H1A—C1—H1B	109.5	N1—C8—O1	118.10 (17)
C2—C1—H1C	109.5	N1—C8—C6	126.55 (17)
H1A—C1—H1C	109.5	O1—C8—C6	115.35 (16)
H1B—C1—H1C	109.5	O1—C9—C10	103.87 (16)
C7—C2—C3	116.38 (18)	O1—C9—H9	111.0
C7—C2—C1	122.16 (17)	C10—C9—H9 <sup>i</sup>	111.0
C3—C2—C1	121.46 (17)	O1—C9—H9 <sup>i</sup>	111.0
C4—C3—C2	121.60 (18)	C10—C9—H9 <sup>i</sup>	111.0
C4—C3—H3	119.2	H9—C9—H9 <sup>i</sup>	109.0
C2—C3—H3	119.2	N1—C10—C9	104.38 (16)
C3—C4—C5	120.52 (19)	N1—C10—H10	110.9
C3—C4—H4	119.7	C9—C10—H10	110.9
C5—C4—H4	119.7	N1—C10—H10 <sup>i</sup>	110.9
C4—C5—C6	120.5 (2)	C9—C10—H10 <sup>i</sup>	110.9
C4—C5—H5	119.8	H10—C10—H10 <sup>i</sup>	108.9
C7—C2—C3—C4	0.0	O2—N2—C7—C2	-88.46 (13)
C1—C2—C3—C4	180.0	O2 <sup>i</sup> —N2—C7—C6	-91.54 (13)
C2—C3—C4—C5	0.0	O2—N2—C7—C6	91.54 (13)
C3—C4—C5—C6	0.0	C10—N1—C8—O1	0.0
C4—C5—C6—C7	0.0	C10—N1—C8—C6	180.0
C4—C5—C6—C8	180.0	C9—O1—C8—N1	0.0
C3—C2—C7—C6	0.0	C9—O1—C8—C6	180.0
C1—C2—C7—C6	180.0	C7—C6—C8—N1	0.0
C3—C2—C7—N2	180.0	C5—C6—C8—N1	180.0
C1—C2—C7—N2	0.0	C7—C6—C8—O1	180.0
C5—C6—C7—C2	0.0	C5—C6—C8—O1	0.0
C8—C6—C7—C2	180.0	C8—O1—C9—C10	0.0
C5—C6—C7—N2	180.0	C8—N1—C10—C9	0.0

C8—C6—C7—N2	0.0	O1—C9—C10—N1	0.0
O2 <sup>i</sup> —N2—C7—C2	88.46 (13)		
Symmetry codes: (i) $x, -y+1/2, z$ .			

*Hydrogen-bond geometry* (Å, °)

<i>D</i> —H $\cdots$ <i>A</i>	<i>D</i> —H	H $\cdots$ <i>A</i>	<i>D</i> $\cdots$ <i>A</i>	<i>D</i> —H $\cdots$ <i>A</i>
C4—H4 $\cdots$ N1 <sup>ii</sup>	0.93	2.60	3.508 (3)	167
Symmetry codes: (ii) $x-1, y, z$ .				

Fig. 1

