

Acta Crystallographica Section E

Structure Reports

Online

ISSN 1600-5368

4-Chloro-*N*-[*N*-(6-methyl-2-pyridyl)-carbamothioyl]benzamide

 Gün Binzet,^a Fatih Mehmet Emen,^a Ulrich Flörke,^b Tuncay Yeşilkaynak,^a Nevzat Külcü^a and Hakan Arslan^{c,d*}

^aDepartment of Chemistry, Faculty of Arts and Science, Mersin University, 33343 Mersin, Turkey, ^bDepartment of Chemistry, University of Paderborn, 33098 Paderborn, Germany, ^cDepartment of Natural Sciences, Fayetteville State University, Fayetteville, NC, 28301, USA, and ^dDepartment of Chemistry, Faculty of Pharmacy, Mersin University, 33169 Mersin, Turkey
Correspondence e-mail: hakan.arslan.acad@gmail.com

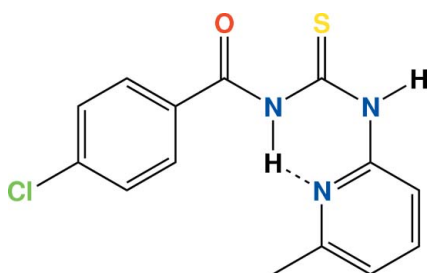
Received 10 November 2008; accepted 5 December 2008

Key indicators: single-crystal X-ray study; $T = 120$ K; mean $\sigma(\text{C}-\text{C}) = 0.008$ Å; R factor = 0.077; wR factor = 0.266; data-to-parameter ratio = 14.3.

In the title compound, $\text{C}_{14}\text{H}_{12}\text{ClN}_3\text{OS}$, the short exocyclic $\text{N}-\text{C}$ bond lengths indicate resonance in the thiourea part of the molecule. The title compound is stabilized by an intramolecular $\text{N}-\text{H}\cdots\text{N}$ hydrogen bond, which results in the formation of a six-membered ring. In addition, it shows a synperiplanar conformation between the thiocarbonyl group and the pyridine group. Intermolecular $\text{N}-\text{H}\cdots\text{S}$ and $\text{C}-\text{H}\cdots\text{O}$ interactions are also present.

Related literature

For the synthesis, see: Mansuroğlu *et al.* (2008); Arslan *et al.* (2003a,b); Binzet *et al.* (2006). For general background, see: Arslan *et al.* (2006a,b, 2007); Kemp *et al.* (1997); Koch *et al.* (1995); Nencki (1873); Özpozan *et al.* (2000). For related compounds, see: Arslan *et al.* (2003a, 2006b, 2007); Dong *et al.* (2008); Duque *et al.* (2008); Tutughamiarso & Bolte (2007); Yue *et al.* (2008); Yusof *et al.* (2008a,b); Xian (2008); Thiam *et al.* (2008); Binzet *et al.* (2006); Uğur *et al.* (2006).



Experimental

Crystal data

$\text{C}_{14}\text{H}_{12}\text{ClN}_3\text{OS}$
 $M_r = 305.78$
 Triclinic, $P\bar{1}$
 $a = 8.255$ (3) Å
 $b = 9.030$ (3) Å
 $c = 9.957$ (3) Å
 $\alpha = 80.810$ (7)°
 $\beta = 66.552$ (7)°
 $\gamma = 87.269$ (7)°
 $V = 672.1$ (4) Å³
 $Z = 2$
 Mo $K\alpha$ radiation
 $\mu = 0.44$ mm⁻¹
 $T = 120$ (2) K
 $0.20 \times 0.14 \times 0.10$ mm

Data collection

Bruker SMART CCD area-detector diffractometer
 Absorption correction: multi-scan (*SADABS*; Bruker, 2002)
 $T_{\min} = 0.918$, $T_{\max} = 0.958$
 3651 measured reflections
 2609 independent reflections
 1492 reflections with $I > 2\sigma(I)$
 $R_{\text{int}} = 0.100$

Refinement

$R[F^2 > 2\sigma(F^2)] = 0.077$
 $wR(F^2) = 0.266$
 $S = 0.98$
 2609 reflections
 182 parameters
 H-atom parameters constrained
 $\Delta\rho_{\max} = 0.81$ e Å⁻³
 $\Delta\rho_{\min} = -0.50$ e Å⁻³

Table 1

Hydrogen-bond geometry (Å, °).

$D-\text{H}\cdots A$	$D-\text{H}$	$\text{H}\cdots A$	$D\cdots A$	$D-\text{H}\cdots A$
$\text{C12}-\text{H12A}\cdots\text{O1}^{\text{i}}$	0.95	2.42	3.303 (7)	154
$\text{N2}-\text{H2B}\cdots\text{S1}^{\text{ii}}$	0.88	2.61	3.464 (5)	165
$\text{N1}-\text{H1B}\cdots\text{N3}$	0.88	1.90	2.651 (7)	142

 Symmetry codes: (i) $x, y, z - 1$; (ii) $-x + 1, -y + 2, -z$.

Data collection: *SMART* (Bruker, 2002); cell refinement: *SAINTE* (Bruker, 2002); data reduction: *SAINTE*; program(s) used to solve structure: *SHELXTL* (Sheldrick, 2008); program(s) used to refine structure: *SHELXTL*; molecular graphics: *SHELXTL*; software used to prepare material for publication: *SHELXTL*.

This work was supported by Mersin University Research Fund (Project Nos. BAP-ECZ-F-TBB-(HA) 2004–3 and BAP-FEF-KB-(NK) 2006–3).

Supplementary data and figures for this paper are available from the IUCr electronic archives (Reference: HG2444).

References

- Arslan, H., Flörke, U. & Külcü, N. (2003a). *J. Chem. Crystallogr.* **33**, 919–924.
 Arslan, H., Flörke, U. & Külcü, N. (2007). *Spectrochim. Acta A*, **67**, 936–943.
 Arslan, H., Flörke, U., Külcü, N. & Emen, M. F. (2006a). *J. Coord. Chem.* **59**, 223–228.
 Arslan, H., Külcü, N. & Flörke, U. (2003b). *Transition Met. Chem.* **28**, 816–819.
 Arslan, H., Külcü, N. & Flörke, U. (2006b). *Spectrochim. Acta A*, **64**, 1065–1071.
 Binzet, G., Arslan, H., Flörke, U., Külcü, N. & Duran, N. (2006). *J. Coord. Chem.* **59**, 1395–1406.
 Bruker (2002). *SMART, SAINTE and SADABS*. Bruker AXS Inc., Madison, Wisconsin, USA.
 Dong, W.-K., Yan, H.-B., Chai, L.-Q., Lv, Z.-W. & Zhao, C.-Y. (2008). *Acta Cryst. E* **64**, o1097.
 Duque, J., Estevez-Hernandez, O., Reguera, E., Corrêa, R. S. & Gutierrez Maria, P. (2008). *Acta Cryst. E* **64**, o1068.
 Kemp, G., Roodt, A., Purcell, W. & Koch, K. R. (1997). *J. Chem. Soc. Dalton Trans.* **23**, 4481–4483.

- Koch, K. R., Sacht, C., Grimmbacher, T. & Bourne, S. (1995). *S. Afr. J. Chem.* **48**, 71–77.
- Mansuroğlu, D. S., Arslan, H., Flörke, U. & Külcü, N. (2008). *J. Coord. Chem.* **61**, 3134–3146.
- Nencki, M. (1873). *Ber. Dtsch. Chem. Ges.* **6**, 598–600.
- Özpozan, N., Arslan, H., Ozpozan, T., Ozdes, N. & Külcü, N. (2000). *Thermochim. Acta*, **343**, 127–133.
- Sheldrick, G. M. (2008). *Acta Cryst.* **A64**, 112–122.
- Thiam, E. I., Diop, M., Gaye, M., Sall, A. S. & Barry, A. H. (2008). *Acta Cryst.* **E64**, o776.
- Tutughamiarso, M. & Bolte, M. (2007). *Acta Cryst.* **E63**, o4682.
- Uğur, D., Arslan, H. & Külcü, N. (2006). *Russ. J. Coord. Chem.* **32**, 669–675.
- Xian, L. (2008). *Acta Cryst.* **E64**, o1969.
- Yue, H., Wang, Y., Xia, A., Luo, S. & Xu, D. (2008). *Acta Cryst.* **E64**, o858.
- Yusof, M. S. M., Ayob, N. A. C., Kadir, M. A. & Yamin, B. M. (2008a). *Acta Cryst.* **E64**, o937.
- Yusof, M. S. M., Muharam, S. H., Kassim, M. B. & Yamin, B. M. (2008b). *Acta Cryst.* **E64**, o1137.

supplementary materials

Acta Cryst. (2009). E65, o81-o82 [doi:10.1107/S1600536808041123]

4-Chloro-*N*-[*N*-(6-methyl-2-pyridyl)carbamothioyl]benzamide

G. Binzet, F. M. Emen, U. Flörke, T. Yesilkaynak, N. Külçü and H. Arslan

Comment

Thiourea derivatives, first synthesized by Nencki, 1873, are very flexible ligands and able to coordinate to a range of metal centers as neutral ligands, monoanions or dianions (Mansuroğlu *et al.*, 2008; Arslan *et al.*, 2003*b*, 2006*a*; Binzet *et al.*, 2006; Kemp *et al.*, 1997; Koch *et al.*, 1995). In addition, the oxygen, nitrogen and sulfur donors provide a multitude of bonding possibilities. The coordination chemistry of substituted thioureas has led to some interesting practical applications such as liquid–liquid extraction, pre-concentration and highly efficient chromatographic separation (Kemp *et al.*, 1997; Koch *et al.*, 1995).

Our team focused on the synthesis, characterization, crystal structure, thermal behavior and antimicrobial activity of new thiourea derivatives (Mansuroğlu *et al.*, 2008; Arslan *et al.*, 2003*a*, 2003*b*, 2006*a*, 2006*b*, 2007; Uğur *et al.*, 2006; Özpozan *et al.*, 2000). In this article, we report the preparation and characterization of a novel thiourea compound, 4-chloro-*N*-(6-methylpyridin-2-yl-carbamothioyl)benzamide (I), and its crystal structure. The title compound was purified by re-crystallization from ethanol:dichloromethane mixture (1:2) and characterized by elemental analysis. The analytical data is consistent with the proposed structure given in Scheme 1.

The molecular structure and packing diagram are depicted in Figure 1 and 2, respectively. The bond lengths and angles in the thiourea moiety are typical for thiourea derivatives; the C8—S1 and C7—O1 bonds both show a typical double-bond character with 1.655 (5) and 1.203 (6) Å, respectively. The short bond lengths of the N1—C7, 1.395 (7); N1—C8, 1.376 (6) and N2—C8, 1.364 (6) Å bonds indicate partial double bond character. These results can be explained by the existence of resonance in this part of the molecule. The other C—N bond length is within the expected range.

A lot of substitute benzoylthiourea derivatives have *cis-trans* configurations (Yusof, *et al.*, 2008*a*, 2008*b*; Thiam, *et al.*, 2008; Xian, 2008; Dong, *et al.*, 2008; Duque, *et al.*, 2008). However, the title compound shows an intramolecular N—H...N hydrogen bond (Table 1) which results in the formation of a six membered ring (N3—C9—N2—C8—N1—H1) and leads to a *syn*-periplanar conformation between the thiocarbonyl group carbon atom and the pyridine group nitrogen atom (Tutughamiarso & Bolte, 2007; Yue *et al.*, 2008). The torsion angles in this region, C8—N2—C9—N3, 14.9 (9)° and C9—N2—C8—N1, -7.2 (8)° confirm this conformation. This formation forces the two amide hydrogen atoms to the opposite direction.

The carbonyl and thiocarbonyl part is essentially planar, as reflected by the torsional angles O1—C7—N1—C8, C7—N1—C8—S1 and C7—N1—C8—N2 of 1.7 (9), 0.3 (8) and 179.3 (5)°, respectively. O1, C7, N1, C8 and S1 fragment is also planar (maximum and mean deviations are 0.010 and 0.005 Å, respectively).

The crystal packing is shown in Fig. 2. There are two intermolecular, N—H...S and C—H...O, hydrogen bonds which connect molecules in chains parallel to [100].

Experimental

The compound was prepared with a procedure similar to that reported in the literature (Arslan *et al.*, 2003b, 2006a). A solution of 4-chloro-benzoyl chloride (0.01 mol) in acetone (50 cm³) was added dropwise to a suspension of potassium thiocyanate (0.01 mol) in acetone (30 cm³). The reaction mixture was heated under reflux for 30 min, and then cooled to room temperature. A solution of 6-methylpyridin-2-amine (0.01 mol) in acetone (10 cm³) was added and the resulting mixture was stirred for 2 h. Hydrochloric acid (0.1 N, 300 cm³) was added to the solution, which was then filtered. The solid product was washed with water and purified by recrystallization from an ethanol:dichloromethane mixture (1:2). Anal. Calcd. for C₁₄H₁₂ClN₃OS: C, 55.0; H, 4.0; N, 13.7. Found: C, 55.1; H, 3.9; N, 13.7%.

Figures

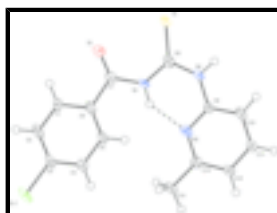


Fig. 1. The molecular structure of the title compound, showing the atom-numbering scheme and displacement ellipsoids drawn at the 50% probability level.

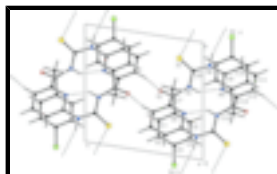


Fig. 2. Packing diagram for (I) viewed along a-direction. Hydrogen bonds shown as dotted lines.

4-Chloro-N-[N-(6-methyl-2-pyridyl)carbamoithiyl]benzamide

Crystal data

C₁₄H₁₂ClN₃OS

M_r = 305.78

Triclinic, *P* $\bar{1}$

Hall symbol: -P 1

a = 8.255 (3) Å

b = 9.030 (3) Å

c = 9.957 (3) Å

α = 80.810 (7)°

β = 66.552 (7)°

γ = 87.269 (7)°

V = 672.1 (4) Å³

Z = 2

*F*₀₀₀ = 316

D_x = 1.511 Mg m⁻³

Mo *K* α radiation

λ = 0.71073 Å

Cell parameters from 716 reflections

θ = 2.3–26.3°

μ = 0.44 mm⁻¹

T = 120 (2) K

Prism, yellow

0.20 × 0.14 × 0.10 mm

Data collection

Bruker SMART CCD area-detector

2609 independent reflections

diffractometer	
Radiation source: sealed tube	1492 reflections with $I > 2\sigma(I)$
Monochromator: graphite	$R_{\text{int}} = 0.100$
$T = 120(2)$ K	$\theta_{\text{max}} = 26.4^\circ$
φ and ω scans	$\theta_{\text{min}} = 2.3^\circ$
Absorption correction: multi-scan (SADABS; Bruker, 2002)	$h = -10 \rightarrow 10$
$T_{\text{min}} = 0.918$, $T_{\text{max}} = 0.958$	$k = -11 \rightarrow 5$
3651 measured reflections	$l = -12 \rightarrow 10$

Refinement

Refinement on F^2	Secondary atom site location: difference Fourier map
Least-squares matrix: full	Hydrogen site location: inferred from neighbouring sites
$R[F^2 > 2\sigma(F^2)] = 0.077$	H-atom parameters constrained
$wR(F^2) = 0.266$	$w = 1/[\sigma^2(F_o^2) + (0.1601P)^2]$
$S = 0.98$	where $P = (F_o^2 + 2F_c^2)/3$
2609 reflections	$(\Delta/\sigma)_{\text{max}} < 0.001$
182 parameters	$\Delta\rho_{\text{max}} = 0.81 \text{ e } \text{\AA}^{-3}$
Primary atom site location: structure-invariant direct methods	$\Delta\rho_{\text{min}} = -0.50 \text{ e } \text{\AA}^{-3}$
	Extinction correction: none

Special details

Geometry. All e.s.d.'s (except the e.s.d. in the dihedral angle between two l.s. planes) are estimated using the full covariance matrix. The cell e.s.d.'s are taken into account individually in the estimation of e.s.d.'s in distances, angles and torsion angles; correlations between e.s.d.'s in cell parameters are only used when they are defined by crystal symmetry. An approximate (isotropic) treatment of cell e.s.d.'s is used for estimating e.s.d.'s involving l.s. planes.

Refinement. Refinement of F^2 against ALL reflections. The weighted R -factor wR and goodness of fit S are based on F^2 , conventional R -factors R are based on F , with F set to zero for negative F^2 . The threshold expression of $F^2 > \sigma(F^2)$ is used only for calculating R -factors(gt) *etc.* and is not relevant to the choice of reflections for refinement. R -factors based on F^2 are statistically about twice as large as those based on F , and R -factors based on ALL data will be even larger.

Fractional atomic coordinates and isotropic or equivalent isotropic displacement parameters (\AA^2)

	x	y	z	$U_{\text{iso}}^*/U_{\text{eq}}$
Cl1	-0.0760 (2)	-0.08311 (16)	0.24521 (19)	0.0469 (5)
S1	0.4068 (2)	0.83271 (15)	0.20068 (15)	0.0316 (5)
O1	0.2334 (6)	0.5331 (4)	0.3623 (4)	0.0370 (10)
N1	0.2869 (6)	0.6040 (5)	0.1158 (5)	0.0296 (11)
H1B	0.2730	0.5725	0.0418	0.036*
N2	0.4090 (6)	0.8104 (5)	-0.0583 (5)	0.0282 (11)
H2B	0.4462	0.9040	-0.0760	0.034*
N3	0.3162 (6)	0.6306 (5)	-0.1620 (5)	0.0253 (10)
C1	0.0432 (8)	0.2777 (6)	0.3757 (6)	0.0347 (14)

supplementary materials

H1A	0.0183	0.3141	0.4662	0.042*
C2	-0.0314 (8)	0.1427 (6)	0.3760 (7)	0.0394 (15)
H2A	-0.1122	0.0888	0.4661	0.047*
C3	0.0122 (8)	0.0878 (6)	0.2450 (6)	0.0322 (13)
C4	0.1259 (8)	0.1664 (6)	0.1110 (6)	0.0365 (15)
H4A	0.1537	0.1280	0.0211	0.044*
C5	0.1987 (7)	0.3030 (6)	0.1107 (6)	0.0264 (12)
H5A	0.2783	0.3572	0.0201	0.032*
C6	0.1558 (7)	0.3597 (5)	0.2407 (6)	0.0258 (12)
C7	0.2278 (7)	0.5061 (6)	0.2497 (6)	0.0272 (12)
C8	0.3644 (6)	0.7438 (5)	0.0850 (6)	0.0208 (11)
C9	0.4067 (7)	0.7576 (6)	-0.1828 (6)	0.0261 (12)
C10	0.5010 (7)	0.8375 (6)	-0.3213 (6)	0.0291 (13)
H10A	0.5701	0.9232	-0.3321	0.035*
C11	0.4925 (8)	0.7902 (6)	-0.4435 (6)	0.0316 (13)
H11A	0.5503	0.8463	-0.5394	0.038*
C12	0.3987 (7)	0.6598 (6)	-0.4245 (6)	0.0287 (13)
H12A	0.3913	0.6251	-0.5071	0.034*
C13	0.3156 (7)	0.5806 (6)	-0.2823 (6)	0.0229 (12)
C14	0.2159 (8)	0.4360 (6)	-0.2553 (7)	0.0322 (13)
H14A	0.2846	0.3515	-0.2327	0.048*
H14B	0.1965	0.4249	-0.3441	0.048*
H14C	0.1018	0.4375	-0.1715	0.048*

Atomic displacement parameters (\AA^2)

	U^{11}	U^{22}	U^{33}	U^{12}	U^{13}	U^{23}
Cl1	0.0577 (11)	0.0250 (8)	0.0548 (11)	-0.0248 (7)	-0.0183 (9)	-0.0001 (7)
S1	0.0473 (10)	0.0223 (7)	0.0274 (8)	-0.0173 (6)	-0.0164 (7)	-0.0004 (6)
O1	0.053 (3)	0.030 (2)	0.029 (2)	-0.0182 (19)	-0.017 (2)	-0.0027 (17)
N1	0.043 (3)	0.023 (2)	0.022 (2)	-0.019 (2)	-0.009 (2)	-0.0055 (19)
N2	0.038 (3)	0.020 (2)	0.027 (2)	-0.0162 (19)	-0.013 (2)	-0.0017 (18)
N3	0.024 (2)	0.022 (2)	0.034 (3)	-0.0071 (18)	-0.015 (2)	-0.0014 (19)
C1	0.059 (4)	0.022 (3)	0.019 (3)	-0.015 (3)	-0.012 (3)	0.004 (2)
C2	0.045 (4)	0.027 (3)	0.034 (3)	-0.022 (3)	-0.003 (3)	0.003 (3)
C3	0.040 (3)	0.022 (3)	0.029 (3)	-0.019 (2)	-0.009 (3)	0.005 (2)
C4	0.064 (4)	0.021 (3)	0.024 (3)	-0.014 (3)	-0.017 (3)	0.001 (2)
C5	0.033 (3)	0.020 (3)	0.026 (3)	-0.013 (2)	-0.015 (2)	0.007 (2)
C6	0.030 (3)	0.017 (3)	0.030 (3)	-0.008 (2)	-0.013 (3)	0.004 (2)
C7	0.035 (3)	0.020 (3)	0.027 (3)	-0.009 (2)	-0.015 (3)	0.002 (2)
C8	0.020 (3)	0.017 (2)	0.029 (3)	0.000 (2)	-0.016 (2)	0.004 (2)
C9	0.043 (3)	0.017 (3)	0.020 (3)	-0.009 (2)	-0.016 (3)	0.004 (2)
C10	0.036 (3)	0.020 (3)	0.032 (3)	-0.013 (2)	-0.015 (3)	0.003 (2)
C11	0.047 (4)	0.020 (3)	0.024 (3)	-0.013 (2)	-0.011 (3)	0.001 (2)
C12	0.036 (3)	0.025 (3)	0.024 (3)	-0.014 (2)	-0.010 (2)	-0.004 (2)
C13	0.027 (3)	0.021 (3)	0.026 (3)	-0.004 (2)	-0.016 (2)	0.001 (2)
C14	0.042 (3)	0.024 (3)	0.038 (3)	-0.011 (2)	-0.022 (3)	-0.006 (2)

Geometric parameters (Å, °)

C11—C3	1.737 (5)	C4—C5	1.396 (7)
S1—C8	1.655 (5)	C4—H4A	0.9500
O1—C7	1.203 (6)	C5—C6	1.376 (7)
N1—C8	1.376 (6)	C5—H5A	0.9500
N1—C7	1.395 (7)	C6—C7	1.504 (7)
N1—H1B	0.8800	C9—C10	1.382 (7)
N2—C8	1.364 (6)	C10—C11	1.379 (7)
N2—C9	1.405 (6)	C10—H10A	0.9500
N2—H2B	0.8800	C11—C12	1.386 (7)
N3—C9	1.341 (6)	C11—H11A	0.9500
N3—C13	1.347 (7)	C12—C13	1.392 (7)
C1—C2	1.391 (7)	C12—H12A	0.9500
C1—C6	1.405 (7)	C13—C14	1.506 (7)
C1—H1A	0.9500	C14—H14A	0.9800
C2—C3	1.375 (8)	C14—H14B	0.9800
C2—H2A	0.9500	C14—H14C	0.9800
C3—C4	1.390 (8)		
C8—N1—C7	128.0 (4)	O1—C7—C6	122.3 (5)
C8—N1—H1B	116.0	N1—C7—C6	113.2 (4)
C7—N1—H1B	116.0	N2—C8—N1	113.5 (4)
C8—N2—C9	132.1 (4)	N2—C8—S1	119.5 (4)
C8—N2—H2B	113.9	N1—C8—S1	127.1 (4)
C9—N2—H2B	113.9	N3—C9—C10	123.1 (5)
C9—N3—C13	118.0 (5)	N3—C9—N2	118.5 (5)
C2—C1—C6	119.5 (5)	C10—C9—N2	118.3 (5)
C2—C1—H1A	120.2	C11—C10—C9	118.6 (5)
C6—C1—H1A	120.2	C11—C10—H10A	120.7
C3—C2—C1	119.7 (5)	C9—C10—H10A	120.7
C3—C2—H2A	120.2	C10—C11—C12	119.2 (5)
C1—C2—H2A	120.2	C10—C11—H11A	120.4
C2—C3—C4	121.4 (5)	C12—C11—H11A	120.4
C2—C3—C11	119.9 (4)	C11—C12—C13	118.8 (5)
C4—C3—C11	118.7 (4)	C11—C12—H12A	120.6
C3—C4—C5	118.8 (5)	C13—C12—H12A	120.6
C3—C4—H4A	120.6	N3—C13—C12	122.1 (5)
C5—C4—H4A	120.6	N3—C13—C14	116.7 (5)
C6—C5—C4	120.5 (5)	C12—C13—C14	121.2 (5)
C6—C5—H5A	119.8	C13—C14—H14A	109.5
C4—C5—H5A	119.8	C13—C14—H14B	109.5
C5—C6—C1	120.1 (5)	H14A—C14—H14B	109.5
C5—C6—C7	123.7 (5)	C13—C14—H14C	109.5
C1—C6—C7	116.2 (5)	H14A—C14—H14C	109.5
O1—C7—N1	124.4 (5)	H14B—C14—H14C	109.5
C6—C1—C2—C3	3.0 (10)	C9—N2—C8—N1	-7.2 (8)
C1—C2—C3—C4	-1.9 (10)	C9—N2—C8—S1	172.4 (5)
C1—C2—C3—C11	178.3 (5)	C7—N1—C8—N2	179.3 (5)

supplementary materials

C2—C3—C4—C5	0.9 (10)	C7—N1—C8—S1	-0.3 (8)
C11—C3—C4—C5	-179.3 (4)	C13—N3—C9—C10	-1.1 (8)
C3—C4—C5—C6	-1.2 (9)	C13—N3—C9—N2	-179.7 (4)
C4—C5—C6—C1	2.3 (9)	C8—N2—C9—N3	14.9 (9)
C4—C5—C6—C7	-179.8 (5)	C8—N2—C9—C10	-163.8 (5)
C2—C1—C6—C5	-3.3 (9)	N3—C9—C10—C11	4.4 (9)
C2—C1—C6—C7	178.7 (5)	N2—C9—C10—C11	-177.0 (5)
C8—N1—C7—O1	1.7 (9)	C9—C10—C11—C12	-3.7 (8)
C8—N1—C7—C6	-177.9 (5)	C10—C11—C12—C13	0.1 (9)
C5—C6—C7—O1	-157.3 (6)	C9—N3—C13—C12	-2.8 (8)
C1—C6—C7—O1	20.7 (8)	C9—N3—C13—C14	178.7 (5)
C5—C6—C7—N1	22.3 (8)	C11—C12—C13—N3	3.3 (8)
C1—C6—C7—N1	-159.7 (5)	C11—C12—C13—C14	-178.3 (5)

Hydrogen-bond geometry (Å, °)

<i>D</i> —H \cdots <i>A</i>	<i>D</i> —H	H \cdots <i>A</i>	<i>D</i> \cdots <i>A</i>	<i>D</i> —H \cdots <i>A</i>
C12—H12A \cdots O1 ⁱ	0.95	2.42	3.303 (7)	154
N2—H2B \cdots S1 ⁱⁱ	0.88	2.61	3.464 (5)	165
N1—H1B \cdots N3	0.88	1.90	2.651 (7)	142

Symmetry codes: (i) $x, y, z-1$; (ii) $-x+1, -y+2, -z$.

Fig. 1

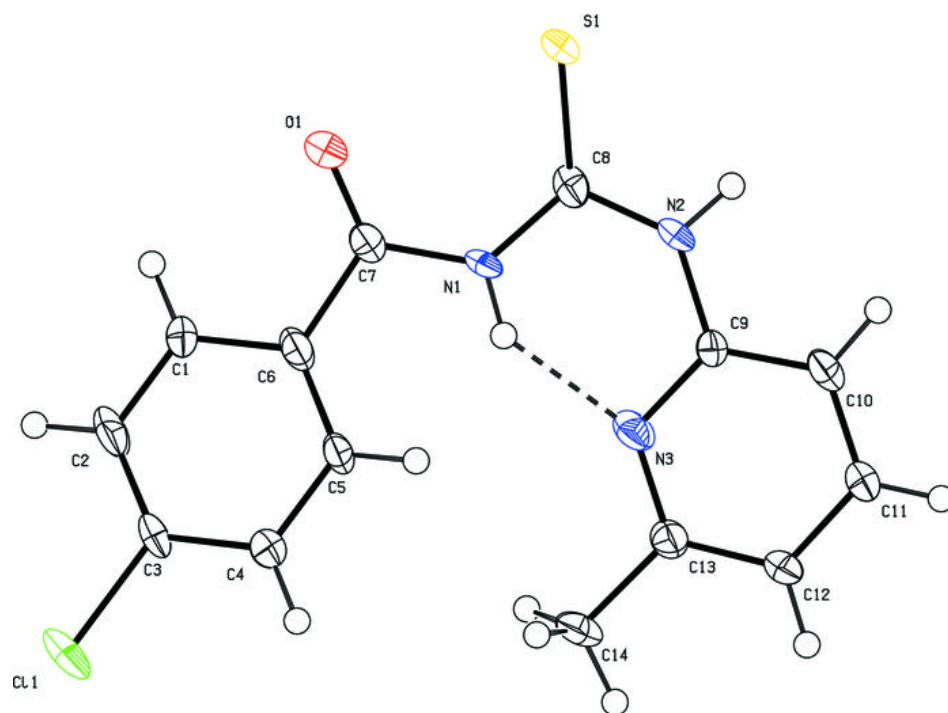


Fig. 2

