

Acta Crystallographica Section E

Structure Reports

Online

ISSN 1600-5368

trans-5,6-Diphenylperhydropyran-2,4-dione

Laura C. de Souza, Dennis de O. Imbroisi, Carlos A. De Simone,* Mariano A. Pereira and Valéria R. S. Malta

Instituto de Química e Biotecnologia, Universidade Federal de Alagoas, 57072-970 Maceió, AL, Brazil

Correspondence e-mail: cas@qui.ufal.br

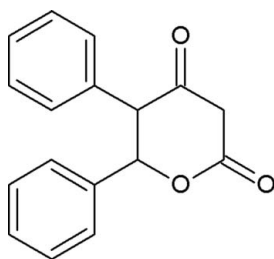
Received 21 November 2008; accepted 2 January 2009

Key indicators: single-crystal X-ray study; $T = 295$ K; mean $\sigma(\text{C}-\text{C}) = 0.002$ Å; R factor = 0.050; wR factor = 0.131; data-to-parameter ratio = 17.2.

In the title compound, $\text{C}_{17}\text{H}_{14}\text{O}_3$, the pyran ring adopts a boat conformation and the dihedral angle between the aromatic ring planes is $59.1(1)^\circ$. In the crystal structure intermolecular $\text{C}-\text{H}\cdots\text{O}$ hydrogen bonds and $\text{C}-\text{H}\cdots\pi$ interactions link the molecules.

Related literature

For general background, see: Yen & Chen (1995); Soler-Rivas *et al.* (2000). For related structures and biological activity, see: Brand-William *et al.* (1995); Sánchez-Moreno *et al.* (1998); Souza *et al.* (2004). For the synthesis, see: Souza (2008). For geometric analysis, see: Cremer & Pople (1975). For bond-length data, see: Allen *et al.* (1987).



Experimental

Crystal data

$\text{C}_{17}\text{H}_{14}\text{O}_3$
 $M_r = 266.28$
 Monoclinic, $P2_1/c$
 $a = 8.9940(2)$ Å
 $b = 8.2310(4)$ Å
 $c = 18.9040(8)$ Å
 $\beta = 101.412(2)^\circ$

$V = 1371.79(9)$ Å³
 $Z = 4$
 Mo $K\alpha$ radiation
 $\mu = 0.09$ mm⁻¹
 $T = 295$ K
 $0.30 \times 0.30 \times 0.18$ mm

Data collection

Nonius KappaCCD diffractometer
 Absorption correction: none
 5298 measured reflections
 3113 independent reflections
 2459 reflections with $I > 2\sigma(I)$
 $R_{\text{int}} = 0.017$

Refinement

$R[F^2 > 2\sigma(F^2)] = 0.050$
 $wR(F^2) = 0.131$
 $S = 1.05$
 3113 reflections
 181 parameters
 H-atom parameters constrained
 $\Delta\rho_{\text{max}} = 0.19$ e Å⁻³
 $\Delta\rho_{\text{min}} = -0.20$ e Å⁻³

Table 1

Hydrogen-bond geometry (Å, °).

$D-\text{H}\cdots A$	$D-\text{H}$	$\text{H}\cdots A$	$D\cdots A$	$D-\text{H}\cdots A$
$\text{C6}-\text{H6}\cdots\text{O2}^i$	0.98	2.44	3.380 (2)	161
$\text{C17}-\text{H17}\cdots\text{O3}^{ii}$	0.93	2.46	3.351 (3)	160
$\text{C3}-\text{H3B}\cdots\text{Cg1}^i$	0.97	2.97	3.681 (2)	131
$\text{C5}-\text{H5}\cdots\text{Cg2}^{iii}$	0.98	2.96	3.830 (2)	149

Symmetry codes: (i) $-x + 2, y - \frac{1}{2}, -z + \frac{3}{2}$; (ii) $x, -y - \frac{1}{2}, z + \frac{1}{2}$; (iii) $-x + 1, y + \frac{1}{2}, -z + \frac{3}{2}$. Cg1 and Cg2 are the centroids of the $\text{C7}-\text{C12}$ and $\text{C13}-\text{C18}$ rings, respectively.

Data collection: *COLLECT* (Nonius, 2000); cell refinement: *SCALEPACK* (Otwinowski & Minor, 1997); data reduction: *DENZO* (Otwinowski & Minor, 1997) and *SCALEPACK*; program(s) used to solve structure: *SHELXS97* (Sheldrick, 2008); program(s) used to refine structure: *SHELXL97* (Sheldrick, 2008); molecular graphics: *ORTEP-3 for Windows* (Farrugia, 1997); software used to prepare material for publication: *WinGX* (Farrugia, 1999).

This work has received partial support from CNPq, CAPES, FAPEAL, IM-INOVAR and FINEP.

Supplementary data and figures for this paper are available from the IUCr electronic archives (Reference: BQ2110).

References

- Allen, F. H., Kennard, O., Watson, D. G., Brammer, L., Orpen, A. G. & Taylor, R. (1987). *J. Chem. Soc. Perkin Trans. 2*, pp. S1–19.
- Brand-William, W., Cuvelier, M. E. & Berset, C. (1995). *Food Sci. Technol.* **28**, 25–30.
- Cremer, D. & Pople, J. A. (1975). *J. Am. Chem. Soc.* **97**, 1354–1358.
- Farrugia, L. J. (1997). *J. Appl. Cryst.* **30**, 565.
- Farrugia, L. J. (1999). *J. Appl. Cryst.* **32**, 837–838.
- Nonius (2000). *COLLECT*. Nonius BV, Delft, The Netherlands.
- Otwinowski, Z. & Minor, W. (1997). *Methods in Enzymology*, Vol. 276, *Macromolecular Crystallography*, Part A, edited by C. W. Carter Jr & R. M. Sweet, pp. 307–326, New York: Academic Press.
- Sánchez-Moreno, C., Larrauri, J. A. & Saura-Calixto, F. J. (1998). *Sci. Food. Agric.* **76**, 270–276.
- Sheldrick, G. M. (2008). *Acta Cryst.* **A64**, 112–122.
- Soler-Rivas, C., Espin, J. C. & Withers, H. J. (2000). *Phytochem. Anal.* **11**, 330–338.
- Souza, L. C. (2008). PhD thesis, Instituto de Química e Biotecnologia, University of Alagoas, Brazil.
- Souza, L. C., Araújo, S. M. S. & Imbroisi, D. O. (2004). *Bioorg. Med. Chem. Lett.* **14**, 5859–5861.
- Yen, G. C. & Chen, H. Y. J. (1995). *Agric. Food Chem.* **43**, 27–32.

supplementary materials

Acta Cryst. (2009). E65, o250 [doi:10.1107/S1600536809000087]

***trans*-5,6-Diphenylperhydropyran-2,4-dione**

L. C. de Souza, D. de O. Imbroisi, C. A. De Simone, M. A. Pereira and V. R. S. Malta

Comment

The free radicals generated in bioorganic redoxi processes induce oxidative damage in various components of the cells (*e.g.*, lipids, proteins and nucleic acids) and their play a significant role in the development of life-limiting chronic diseases such as cancer, hypertension, arteriosclerosis, rheumatism, cataracts and other (Yen & Chen, 1995; Soler-Rivas *et al.*, 2000). The dihydropyran-2,4-diones exhibit structural features present bin many biologically active natural products possessing important pharmacological activities (Brand-William *et al.*, 1995; Sánchez-Moreno *et al.*, 1998). As part of our continuing studies aimed at ascertaining the biological activity of this class, the title compound was synthesized (Souza, 2008) and its antioxidant activity analyzed *in vitro*, by measuring the decrease in absorbance at 515 nm that occurred when the 2,2-diphenyl-1-picryl-hydrazyl radical (DPPH) was reduced by the antioxidant. The spectrophotometric assay was used to determine the radical scavenging activity (Souza *et al.*, 2004).

The *ORTEP*-3 (Farrugia, 1997) representation of the title compound (5,6-DPDP) is showing in (Fig. 1). Bond lengths and angles are in good agreement with the expected values reported in the literature (Allen *et al.*, 1987). The pirane ring adopts a boat conformation and the calculated puckering parameters are: $q_2 = 0.624(1) \text{ \AA}$, $q_3 = 0.121(1) \text{ \AA}$, $Q_T = 0.636(1) \text{ \AA}$, $\theta = 79.0(1)^\circ$ and $\varphi = 287.5(1)^\circ$ (Cremer & Pople, 1975). The dihedral angle between planes passing through atoms C7—C12 and C13—C18 of the aromatic rings is $59.1(1)^\circ$. In the crystal packing, molecules interact through two intermolecular C—H \cdots O hydrogen bonds and two C—H \cdots π interactions, Fig. 2 and Table 1.

Experimental

The *trans*-5, 6-diphenyltetrahydropyran-2,4-dione has showed similar antioxidant activity at the positive control, the synthetic antioxidant BHT (2,6-di-*tert*-butyl-4-methylphenol) used as food conserving. The reduction percentage after 60 minutes to a solution of 20 nM of sample were 88% to 5,6-DPDP and 82% to BHT (Souza, 2008). The 5,6-DPDP was synthesized in one pot by preparation of the dianion of the ethyl 3-oxo-4-phenylbutanoate (NaH, *n*-butyllithium, THF, -10°C), and alkylation reaction with benzaldehyde followed by ester hydrolysis (NaOH, H₂O, 12 h, RT) and lactonization in acidic medium (HCl, H₂O, 2 h, 0°C). The compound was purified by silica gel chromatography and the crystals for *x*-ray diffraction studies were grown by slow evaporation from a CHCl₃ solution.

Refinement

H atoms were located on stereochemical grounds and refined with fixed geometry, each riding on a carrier atom, with C—H = [0.93 - 0.98] Å and anisotropic displacement parameter amounting to 1.5 (for Methyl-H atoms) and 1.2 (for the other H atoms) times the value of the equivalent isotropic displacement parameter of the which they are attached. The maximum and minimum residual electron density peaks were located 0.73 and 0.74 Å, from the C5 and H15 atoms respectively.

Figures

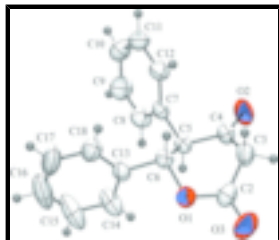


Fig. 1. Projection of $C_{17}H_{14}O_3$, showing the atom labelling with 50% probability displacement.

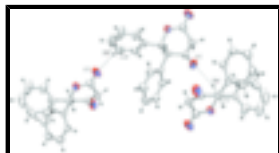


Fig. 2. Hydrogen interactions.

trans-5,6-Diphenylperhydropyran-2,4-dione

Crystal data

$C_{17}H_{14}O_3$

$M_r = 266.28$

Monoclinic, $P2_1/c$

Hall symbol: $-P2_1/c$

$a = 8.9940$ (2) Å

$b = 8.2310$ (4) Å

$c = 18.9040$ (8) Å

$\beta = 101.412$ (2)°

$V = 1371.79$ (9) Å³

$Z = 4$

$F_{000} = 560$

$D_x = 1.289$ Mg m⁻³

Mo $K\alpha$ radiation

$\lambda = 0.71073$ Å

Cell parameters from 2880 reflections

$\theta = 1.0$ – 27.5 °

$\mu = 0.09$ mm⁻¹

$T = 295$ K

Prism, yellow

$0.30 \times 0.30 \times 0.18$ mm

Data collection

Nonius KappaCCD
diffractometer

2459 reflections with $I > 2\sigma(I)$

Radiation source: Enraf Nonius FR590

$R_{int} = 0.017$

Monochromator: horizontally mounted graphite crystal

$\theta_{max} = 27.5$ °

Detector resolution: 9 pixels mm⁻¹

$\theta_{min} = 2.3$ °

CCD rotation images, thick slices scans

$h = -11 \rightarrow 11$

Absorption correction: none

$k = -9 \rightarrow 10$

5298 measured reflections

$l = -24 \rightarrow 24$

3113 independent reflections

Refinement

Refinement on F^2

Secondary atom site location: difference Fourier map

Least-squares matrix: full

$$R[F^2 > 2\sigma(F^2)] = 0.050$$

$$wR(F^2) = 0.131$$

$$S = 1.05$$

3113 reflections

181 parameters

Primary atom site location: structure-invariant direct methods

Hydrogen site location: inferred from neighbouring sites

H-atom parameters constrained

$$w = 1/[\sigma^2(F_o^2) + (0.0508P)^2 + 0.3831P]$$

$$\text{where } P = (F_o^2 + 2F_c^2)/3$$

$$(\Delta/\sigma)_{\max} < 0.001$$

$$\Delta\rho_{\max} = 0.19 \text{ e } \text{\AA}^{-3}$$

$$\Delta\rho_{\min} = -0.20 \text{ e } \text{\AA}^{-3}$$

Extinction correction: none

Special details

Geometry. All e.s.d.'s (except the e.s.d. in the dihedral angle between two l.s. planes) are estimated using the full covariance matrix. The cell e.s.d.'s are taken into account individually in the estimation of e.s.d.'s in distances, angles and torsion angles; correlations between e.s.d.'s in cell parameters are only used when they are defined by crystal symmetry. An approximate (isotropic) treatment of cell e.s.d.'s is used for estimating e.s.d.'s involving l.s. planes.

Refinement. Refinement of F^2 against ALL reflections. The weighted R -factor wR and goodness of fit S are based on F^2 , conventional R -factors R are based on F , with F set to zero for negative F^2 . The threshold expression of $F^2 > \sigma(F^2)$ is used only for calculating R -factors(gt) *etc.* and is not relevant to the choice of reflections for refinement. R -factors based on F^2 are statistically about twice as large as those based on F , and R -factors based on ALL data will be even larger.

Fractional atomic coordinates and isotropic or equivalent isotropic displacement parameters (\AA^2)

	<i>x</i>	<i>y</i>	<i>z</i>	$U_{\text{iso}}^*/U_{\text{eq}}$
C2	0.69397 (19)	-0.0595 (2)	0.63794 (8)	0.0521 (4)
C3	0.84834 (19)	0.0134 (2)	0.65634 (8)	0.0560 (4)
H3A	0.8717	0.0620	0.6131	0.067*
H3B	0.9211	-0.0730	0.6712	0.067*
C4	0.86937 (16)	0.1403 (2)	0.71484 (8)	0.0476 (4)
C5	0.76480 (14)	0.12492 (17)	0.76852 (7)	0.0383 (3)
H5	0.6771	0.1953	0.7515	0.046*
C6	0.70604 (15)	-0.05049 (17)	0.76642 (7)	0.0385 (3)
H6	0.7925	-0.1246	0.7790	0.046*
C7	0.83633 (14)	0.17992 (16)	0.84390 (7)	0.0385 (3)
C8	0.76586 (17)	0.2946 (2)	0.87924 (9)	0.0520 (4)
H8	0.6745	0.3402	0.8562	0.062*
C9	0.8303 (2)	0.3421 (2)	0.94867 (10)	0.0652 (5)
H9	0.7817	0.4189	0.9722	0.078*
C10	0.9657 (2)	0.2763 (2)	0.98306 (9)	0.0631 (5)
H10	1.0094	0.3097	1.0295	0.076*
C11	1.03660 (18)	0.1616 (2)	0.94891 (9)	0.0565 (4)
H11	1.1281	0.1166	0.9723	0.068*
C12	0.97190 (16)	0.11267 (19)	0.87959 (8)	0.0477 (4)
H12	1.0198	0.0340	0.8567	0.057*
C13	0.59831 (15)	-0.07985 (17)	0.81644 (7)	0.0412 (3)
C14	0.46566 (19)	0.0086 (2)	0.80971 (12)	0.0644 (5)

supplementary materials

H14	0.4401	0.0834	0.7724	0.077*
C15	0.3711 (3)	-0.0137 (3)	0.85803 (16)	0.0935 (8)
H15	0.2827	0.0473	0.8535	0.112*
C16	0.4061 (3)	-0.1242 (4)	0.91217 (15)	0.1019 (10)
H16	0.3420	-0.1378	0.9447	0.122*
C17	0.5352 (3)	-0.2153 (4)	0.91893 (11)	0.0967 (9)
H17	0.5583	-0.2915	0.9558	0.116*
C18	0.6323 (2)	-0.1938 (2)	0.87041 (9)	0.0643 (5)
H18	0.7197	-0.2564	0.8746	0.077*
O1	0.62369 (12)	-0.08786 (13)	0.69346 (5)	0.0487 (3)
O2	0.96257 (15)	0.24604 (19)	0.71798 (7)	0.0767 (4)
O3	0.63076 (17)	-0.0935 (2)	0.57795 (6)	0.0792 (4)

Atomic displacement parameters (\AA^2)

	U^{11}	U^{22}	U^{33}	U^{12}	U^{13}	U^{23}
C2	0.0651 (10)	0.0484 (9)	0.0431 (8)	0.0015 (7)	0.0113 (7)	-0.0051 (7)
C3	0.0617 (9)	0.0655 (10)	0.0462 (8)	-0.0027 (8)	0.0239 (7)	-0.0015 (7)
C4	0.0423 (7)	0.0550 (9)	0.0467 (8)	-0.0069 (7)	0.0113 (6)	0.0061 (7)
C5	0.0347 (6)	0.0387 (7)	0.0422 (7)	-0.0028 (5)	0.0091 (5)	0.0005 (6)
C6	0.0368 (6)	0.0390 (7)	0.0393 (7)	-0.0005 (5)	0.0065 (5)	-0.0010 (5)
C7	0.0355 (6)	0.0375 (7)	0.0436 (7)	-0.0054 (5)	0.0105 (5)	-0.0013 (6)
C8	0.0456 (8)	0.0520 (9)	0.0578 (9)	0.0054 (7)	0.0089 (7)	-0.0089 (7)
C9	0.0683 (11)	0.0677 (11)	0.0606 (10)	0.0065 (9)	0.0158 (8)	-0.0212 (9)
C10	0.0674 (11)	0.0741 (12)	0.0456 (9)	-0.0053 (9)	0.0054 (7)	-0.0149 (8)
C11	0.0462 (8)	0.0640 (10)	0.0558 (9)	0.0005 (7)	0.0015 (7)	-0.0007 (8)
C12	0.0400 (7)	0.0506 (8)	0.0524 (8)	0.0012 (6)	0.0091 (6)	-0.0066 (7)
C13	0.0426 (7)	0.0381 (7)	0.0435 (7)	-0.0100 (5)	0.0100 (6)	-0.0046 (6)
C14	0.0544 (9)	0.0477 (9)	0.0998 (14)	-0.0010 (7)	0.0365 (9)	0.0020 (9)
C15	0.0823 (14)	0.0728 (14)	0.147 (2)	-0.0182 (11)	0.0759 (15)	-0.0221 (15)
C16	0.113 (2)	0.118 (2)	0.0933 (17)	-0.0592 (18)	0.0672 (16)	-0.0339 (16)
C17	0.1149 (19)	0.122 (2)	0.0517 (11)	-0.0542 (18)	0.0137 (12)	0.0191 (12)
C18	0.0620 (10)	0.0742 (12)	0.0529 (9)	-0.0146 (9)	0.0023 (8)	0.0170 (9)
O1	0.0522 (6)	0.0502 (6)	0.0433 (6)	-0.0104 (5)	0.0084 (4)	-0.0078 (5)
O2	0.0722 (8)	0.0922 (10)	0.0712 (8)	-0.0402 (7)	0.0275 (6)	-0.0053 (7)
O3	0.0974 (10)	0.0914 (10)	0.0454 (7)	-0.0122 (8)	0.0061 (6)	-0.0174 (7)

Geometric parameters (\AA , $^\circ$)

C2—O3	1.1971 (19)	C9—C10	1.374 (3)
C2—O1	1.3484 (19)	C9—H9	0.9300
C2—C3	1.489 (2)	C10—C11	1.370 (2)
C3—C4	1.506 (2)	C10—H10	0.9300
C3—H3A	0.9700	C11—C12	1.384 (2)
C3—H3B	0.9700	C11—H11	0.9300
C4—O2	1.2013 (19)	C12—H12	0.9300
C4—C5	1.5191 (19)	C13—C18	1.375 (2)
C5—C7	1.5122 (18)	C13—C14	1.382 (2)
C5—C6	1.5353 (19)	C14—C15	1.378 (3)

C5—H5	0.9800	C14—H14	0.9300
C6—O1	1.4633 (16)	C15—C16	1.358 (4)
C6—C13	1.5013 (18)	C15—H15	0.9300
C6—H6	0.9800	C16—C17	1.367 (4)
C7—C8	1.381 (2)	C16—H16	0.9300
C7—C12	1.387 (2)	C17—C18	1.398 (3)
C8—C9	1.382 (2)	C17—H17	0.9300
C8—H8	0.9300	C18—H18	0.9300
O3—C2—O1	119.27 (16)	C10—C9—H9	119.9
O3—C2—C3	124.18 (16)	C8—C9—H9	119.9
O1—C2—C3	116.55 (13)	C11—C10—C9	120.03 (16)
C2—C3—C4	115.28 (13)	C11—C10—H10	120.0
C2—C3—H3A	108.5	C9—C10—H10	120.0
C4—C3—H3A	108.5	C10—C11—C12	119.91 (15)
C2—C3—H3B	108.5	C10—C11—H11	120.0
C4—C3—H3B	108.5	C12—C11—H11	120.0
H3A—C3—H3B	107.5	C11—C12—C7	120.60 (14)
O2—C4—C3	121.58 (14)	C11—C12—H12	119.7
O2—C4—C5	123.07 (15)	C7—C12—H12	119.7
C3—C4—C5	115.35 (12)	C18—C13—C14	119.27 (15)
C7—C5—C4	113.59 (11)	C18—C13—C6	120.03 (14)
C7—C5—C6	112.70 (11)	C14—C13—C6	120.69 (14)
C4—C5—C6	108.47 (11)	C15—C14—C13	120.3 (2)
C7—C5—H5	107.2	C15—C14—H14	119.9
C4—C5—H5	107.2	C13—C14—H14	119.9
C6—C5—H5	107.2	C16—C15—C14	120.5 (2)
O1—C6—C13	106.88 (10)	C16—C15—H15	119.8
O1—C6—C5	109.24 (11)	C14—C15—H15	119.8
C13—C6—C5	113.39 (11)	C15—C16—C17	120.2 (2)
O1—C6—H6	109.1	C15—C16—H16	119.9
C13—C6—H6	109.1	C17—C16—H16	119.9
C5—C6—H6	109.1	C16—C17—C18	119.9 (2)
C8—C7—C12	118.76 (13)	C16—C17—H17	120.0
C8—C7—C5	120.68 (13)	C18—C17—H17	120.0
C12—C7—C5	120.54 (13)	C13—C18—C17	119.8 (2)
C7—C8—C9	120.43 (15)	C13—C18—H18	120.1
C7—C8—H8	119.8	C17—C18—H18	120.1
C9—C8—H8	119.8	C2—O1—C6	118.00 (11)
C10—C9—C8	120.25 (16)		
O3—C2—C3—C4	141.51 (18)	C9—C10—C11—C12	0.3 (3)
O1—C2—C3—C4	-38.6 (2)	C10—C11—C12—C7	0.6 (3)
C2—C3—C4—O2	-153.41 (17)	C8—C7—C12—C11	-1.0 (2)
C2—C3—C4—C5	26.3 (2)	C5—C7—C12—C11	-179.25 (14)
O2—C4—C5—C7	-33.0 (2)	O1—C6—C13—C18	119.45 (14)
C3—C4—C5—C7	147.27 (13)	C5—C6—C13—C18	-120.13 (15)
O2—C4—C5—C6	-159.12 (16)	O1—C6—C13—C14	-61.63 (17)
C3—C4—C5—C6	21.12 (17)	C5—C6—C13—C14	58.80 (18)
C7—C5—C6—O1	173.61 (10)	C18—C13—C14—C15	2.1 (3)

supplementary materials

C4—C5—C6—O1	-59.72 (13)	C6—C13—C14—C15	-176.85 (17)
C7—C5—C6—C13	54.54 (15)	C13—C14—C15—C16	-0.9 (3)
C4—C5—C6—C13	-178.80 (11)	C14—C15—C16—C17	-0.5 (4)
C4—C5—C7—C8	126.23 (15)	C15—C16—C17—C18	0.6 (4)
C6—C5—C7—C8	-109.89 (15)	C14—C13—C18—C17	-1.9 (3)
C4—C5—C7—C12	-55.59 (18)	C6—C13—C18—C17	176.99 (16)
C6—C5—C7—C12	68.29 (16)	C16—C17—C18—C13	0.6 (3)
C12—C7—C8—C9	0.5 (2)	O3—C2—O1—C6	177.79 (15)
C5—C7—C8—C9	178.72 (15)	C3—C2—O1—C6	-2.1 (2)
C7—C8—C9—C10	0.4 (3)	C13—C6—O1—C2	175.37 (12)
C8—C9—C10—C11	-0.9 (3)	C5—C6—O1—C2	52.33 (16)

Hydrogen-bond geometry (\AA , $^\circ$)

$D-H\cdots A$	$D-H$	$H\cdots A$	$D\cdots A$	$D-H\cdots A$
C6—H6 \cdots O2 ⁱ	0.98	2.44	3.380 (2)	161
C17—H17 \cdots O3 ⁱⁱ	0.93	2.46	3.351 (3)	160
C3—H3B \cdots Cg1 ⁱ	0.97	2.98	3.681 (2)	131
C5—H5 \cdots Cg2 ⁱⁱⁱ	0.98	2.96	3.830 (2)	149

Symmetry codes: (i) $-x+2, y-1/2, -z+3/2$; (ii) $x, -y-1/2, z+1/2$; (iii) $-x+1, y+1/2, -z+3/2$.

Fig. 1

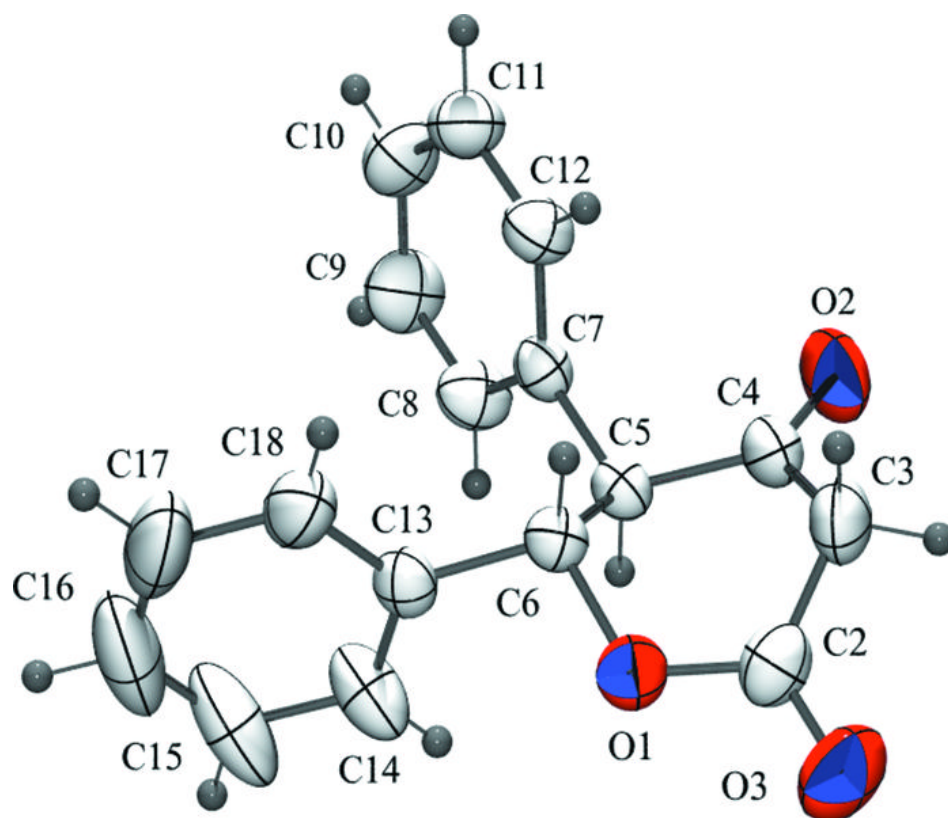


Fig. 2

