

Acta Crystallographica Section E

## Structure Reports

Online

ISSN 1600-5368

# Poly[diaqua( $\mu$ -oxalato)( $\mu$ -2-oxido-pyridinium-3-carboxylato)praseodymium(III)]

Yong-Jun Xu,\* Xiao-Xi Yang and Hong-Bin Zhao

College of Chemistry and Environmental Engineering, Dongguan University of Technology, Dongguan 523808, Guangdong, People's Republic of China

Correspondence e-mail: xuyj2009@yahoo.com.cn

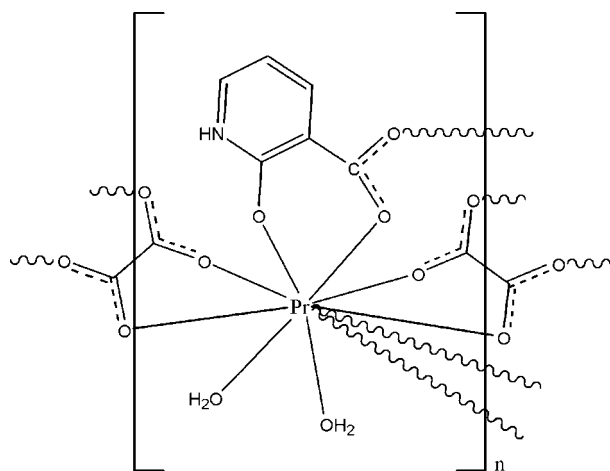
Received 1 February 2009; accepted 16 February 2009

Key indicators: single-crystal X-ray study;  $T = 296$  K; mean  $\sigma(\text{C}-\text{C}) = 0.009$  Å;  $R$  factor = 0.030;  $wR$  factor = 0.080; data-to-parameter ratio = 10.1.

In the title complex,  $[\text{Pr}(\text{C}_6\text{H}_4\text{NO}_3)(\text{C}_2\text{O}_4)(\text{H}_2\text{O})_2]_n$ , each  $\text{Pr}^{\text{III}}$  ion is coordinated by eight O atoms from two 2-oxynicotinate ligands, two oxalate ligands and two water molecules, displaying a distorted bicapped square-antiprismatic geometry. The carboxylate groups link adjacent praseodymium metal centres, forming layers parallel to the  $bc$  plane. The crystal packing is stabilized by intermolecular  $\text{O}-\text{H}\cdots\text{O}$  and  $\text{N}-\text{H}\cdots\text{O}$  hydrogen bonds.

## Related literature

For a general background on the molecular self-assembly of supramolecular architectures, see: Mou *et al.* (2008); Moulton & Zaworotko (2001); Zeng *et al.* (2007).



## Experimental

### Crystal data

$[\text{Pr}(\text{C}_6\text{H}_4\text{NO}_3)(\text{C}_2\text{O}_4)(\text{H}_2\text{O})_2]$   
 $M_r = 403.06$   
 Triclinic,  $P\bar{1}$   
 $a = 7.5820$  (19) Å  
 $b = 8.643$  (2) Å  
 $c = 9.375$  (4) Å  
 $\alpha = 108.992$  (4)°  
 $\beta = 103.925$  (4)°  
 $\gamma = 102.043$  (3)°  
 $V = 535.6$  (3) Å<sup>3</sup>  
 $Z = 2$   
 Mo  $K\alpha$  radiation  
 $\mu = 4.60$  mm<sup>-1</sup>  
 $T = 296$  K  
 $0.19 \times 0.17 \times 0.16$  mm

### Data collection

Bruker APEXII area-detector diffractometer  
 Absorption correction: multi-scan (SADABS; Sheldrick, 1996)  
 $T_{\text{min}} = 0.435$ ,  $T_{\text{max}} = 0.485$   
 2751 measured reflections  
 1888 independent reflections  
 1753 reflections with  $I > 2\sigma(I)$   
 $R_{\text{int}} = 0.024$

### Refinement

$R[F^2 > 2\sigma(F^2)] = 0.030$   
 $wR(F^2) = 0.080$   
 $S = 1.10$   
 1888 reflections  
 187 parameters  
 8 restraints  
 H atoms treated by a mixture of independent and constrained refinement  
 $\Delta\rho_{\text{max}} = 1.06$  e Å<sup>-3</sup>  
 $\Delta\rho_{\text{min}} = -1.66$  e Å<sup>-3</sup>

Table 1

Hydrogen-bond geometry (Å, °).

| $D-\text{H}\cdots A$   | $D-\text{H}$ | $\text{H}\cdots A$ | $D\cdots A$ | $D-\text{H}\cdots A$ |
|--|--------------|--------------------|-------------|----------------------|
| $\text{O}2\text{W}-\text{H}4\text{W}\cdots\text{O}3$                     | 0.83 (3)     | 2.56 (2)           | 3.306 (6)   | 149 (4)              |
| $\text{O}2\text{W}-\text{H}3\text{W}\cdots\text{O}7^{\text{i}}$          | 0.84 (5)     | 1.95 (6)           | 2.764 (6)   | 164 (7)              |
| $\text{O}2\text{W}-\text{H}4\text{W}\cdots\text{O}2\text{W}^{\text{ii}}$ | 0.83 (3)     | 2.37 (2)           | 2.820 (8)   | 114 (2)              |
| $\text{O}1\text{W}-\text{H}2\text{W}\cdots\text{O}2^{\text{ii}}$         | 0.85 (6)     | 2.49 (4)           | 3.280 (7)   | 157 (8)              |
| $\text{O}1\text{W}-\text{H}1\text{W}\cdots\text{O}3$                     | 0.84 (5)     | 2.34 (6)           | 2.760 (6)   | 111 (5)              |
| $\text{O}1\text{W}-\text{H}1\text{W}\cdots\text{O}6^{\text{iii}}$        | 0.84 (5)     | 2.24 (3)           | 3.002 (6)   | 151 (6)              |
| $\text{N}1-\text{H}1\cdots\text{O}4^{\text{iii}}$                        | 0.86 (6)     | 2.12 (4)           | 2.878 (7)   | 146 (6)              |

Symmetry codes: (i)  $x, y-1, z$ ; (ii)  $-x+1, -y+1, -z+2$ ; (iii)  $-x+1, -y+2, -z+2$ .

Data collection: APEX2 (Bruker, 2004); cell refinement: APEX2; data reduction: SAINT (Bruker, 2004); program(s) used to solve structure: SHELXS97 (Sheldrick, 2008); program(s) used to refine structure: SHELXL97 (Sheldrick, 2008); molecular graphics: SHELXTL (Sheldrick, 2008); software used to prepare material for publication: SHELXL97.

The authors gratefully acknowledge the financial support from the Emphasis Project sponsored by the Department of Education of Guangdong Province (No. [2007]129).

Supplementary data and figures for this paper are available from the IUCr electronic archives (Reference: RZ2293).

## References

- Bruker (2004). APEX2 and SAINT. Bruker AXS Inc., Madison, Wisconsin, USA.  
 Mou, J.-X., Zeng, R.-H., Qiu, Y.-C., Zhang, W.-G., Deng, H. & Zeller, M. (2008). *Inorg. Chem. Commun.* **11**, 1347–1351.  
 Moulton, B. & Zaworotko, M. J. (2001). *Chem. Rev.* **101**, 1629–1658.  
 Sheldrick, G. M. (1996). SADABS. University of Göttingen, Germany.  
 Sheldrick, G. M. (2008). *Acta Cryst.* **A64**, 112–122.  
 Zeng, R.-H., Qiu, Y.-C., Cai, Y.-P., Wu, J.-Z. & Deng, H. (2007). *Acta Cryst.* **E63**, m1666.

**supplementary materials**

*Acta Cryst.* (2009). E65, m310 [ doi:10.1107/S160053680900542X ]

## Poly[*diaqua*( $\mu$ -oxalato)( $\mu$ -2-oxidopyridinium-3-carboxylato)praseodymium(III)]

Y.-J. Xu, X.-X. Yang and H.-B. Zhao

### Comment

Molecular self-assembly of supramolecular architectures has received much attention during recent decades (Zeng *et al.*, 2007; Moulton & Zaworotko, 2001; Mou *et al.*, 2008). The structures and properties of such systems depend on the coordination and geometric preferences of both the central metal ions and the bridging building blocks, as well as the influence of weaker non-covalent interactions, such as hydrogen bonds and  $\pi$ - $\pi$  stacking interactions. Recently, we obtained the title coordination polymer, which was synthesized under hydrothermal conditions.

As illustrated in Fig. 1, in the structure of the title compound each Pr<sup>III</sup> centre is in a distorted bicapped square antiprismatic geometry, defined by eight oxygen atoms from two 2-oxynicotinate ligands, two oxalate ligands, and two water molecules. The Pr<sup>III</sup> ions are linked by 2-oxynicotinate ligands and oxalate ligands to form layers parallel to the *bc* plane (Fig. 2), with separations between adjacent Pr<sup>III</sup> metal centres of 4.410 (4), 6.505 (5) and 6.551 (3) Å. Intermolecular O—H $\cdots$ O and N—H $\cdots$ O hydrogen bonding interactions (Table 1) involving the 2-oxynicotinate ligands, the oxalate ligands and the water molecules assemble neighboring layers to form a three-dimensional supramolecular network motif.

### Experimental

A mixture of Pr<sub>2</sub>O<sub>3</sub> (0.330 g; 1.0 mmol), 2-oxynicotinic acid (0.127 g; 1 mmol), oxalic acid (0.09 g; 1 mmol), water (10 ml) in the presence of HNO<sub>3</sub> (0.024 g; 0.385 mmol) was stirred vigorously for 20 min and then sealed in a Teflon-lined stainless-steel autoclave (20 ml, capacity). The autoclave was heated and maintained at 443 K for 3 days. After cooling to room temperature at 5 K h<sup>-1</sup>, colourless block crystals of the title compound were obtained.

### Refinement

Water H atoms were located in difference Fourier maps and were refined with distance restraints of O—H = 0.84 Å, H $\cdots$ H = 1.35 Å, and with  $U_{\text{iso}}(\text{H}) = 1.5 U_{\text{eq}}(\text{O})$ . The separation between symmetry related H4W atoms at (*x*, *y*, *z*) and (1 - *x*, 1 - *y*, 2 - *z*) was restrained to be 2.2 Å. Carbon-bound H atoms were placed at calculated positions and were treated as riding on the parent C atoms with C—H = 0.93 Å, and with  $U_{\text{iso}}(\text{H}) = 1.2 U_{\text{eq}}(\text{C})$ . The H atom bound to the N1 nitrogen atom was refined with a distance restraints of N—H = 0.86 Å and with  $U_{\text{iso}}(\text{H}) = 1.2 U_{\text{eq}}(\text{N})$ .

## Figures

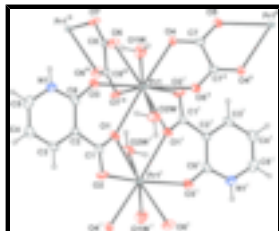


Fig. 1. The molecular structure of the title compound showing the atom-numbering scheme. Displacement ellipsoids are drawn at the 50% probability level. Symmetry codes: (i)  $-x, 1 - y, 2 - z$ ; (ii)  $-x, 1 - y, 1 - z$ ; (iii)  $-x, 2 - y, 2 - z$ .

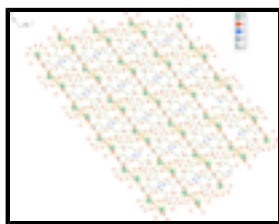


Fig. 2. Crystal structure of the title compound viewed approximately along the  $a$  axis.

## Poly[*diaqua*( $\mu$ -oxalato)( $\mu$ -2-oxidopyridinium-3- carboxylato)praseodymium(III)]

### Crystal data

$[\text{Pr}(\text{C}_6\text{H}_4\text{NO}_3)(\text{C}_2\text{O}_4)(\text{H}_2\text{O})_2]$

$M_r = 403.06$

Triclinic,  $P\bar{1}$

Hall symbol:  $-P\ 1$

$a = 7.5820(19)\ \text{\AA}$

$b = 8.643(2)\ \text{\AA}$

$c = 9.375(4)\ \text{\AA}$

$\alpha = 108.992(4)^\circ$

$\beta = 103.925(4)^\circ$

$\gamma = 102.043(3)^\circ$

$V = 535.6(3)\ \text{\AA}^3$

$Z = 2$

$F_{000} = 388$

$D_x = 2.499\ \text{Mg m}^{-3}$

Mo  $K\alpha$  radiation

$\lambda = 0.71073\ \text{\AA}$

Cell parameters from 2183 reflections

$\theta = 2.6\text{--}28.0^\circ$

$\mu = 4.60\ \text{mm}^{-1}$

$T = 296\ \text{K}$

Block, colourless

$0.19 \times 0.17 \times 0.16\ \text{mm}$

### Data collection

Bruker APEXII area-detector diffractometer

1888 independent reflections

Radiation source: fine-focus sealed tube

1753 reflections with  $I > 2\sigma(I)$

Monochromator: graphite

$R_{\text{int}} = 0.024$

$T = 296\ \text{K}$

$\theta_{\text{max}} = 25.2^\circ$

$\varphi$  and  $\omega$  scans

$\theta_{\text{min}} = 2.4^\circ$

Absorption correction: multi-Scan (SADABS; Sheldrick, 1996)

$h = -9 \rightarrow 8$

$T_{\text{min}} = 0.435, T_{\text{max}} = 0.485$

$k = -6 \rightarrow 10$

2751 measured reflections

$l = -11 \rightarrow 10$

Refinement

|  |  |
|--|--|
| Refinement on $F^2$  | Secondary atom site location: difference Fourier map                   |
| Least-squares matrix: full                                     | Hydrogen site location: inferred from neighbouring sites               |
| $R[F^2 > 2\sigma(F^2)] = 0.030$                                | H atoms treated by a mixture of independent and constrained refinement |
| $wR(F^2) = 0.080$  | $w = 1/[\sigma^2(F_o^2) + (0.0483P)^2 + 0.01P]$                        |
| $S = 1.10$   | where $P = (F_o^2 + 2F_c^2)/3$   |
| 1888 reflections   | $(\Delta/\sigma)_{\max} = 0.001$                                       |
| 187 parameters   | $\Delta\rho_{\max} = 1.06 \text{ e } \text{\AA}^{-3}$                  |
| 8 restraints   | $\Delta\rho_{\min} = -1.66 \text{ e } \text{\AA}^{-3}$                 |
| Primary atom site location: structure-invariant direct methods | Extinction correction: none  |

Special details

**Geometry.** All e.s.d.'s (except the e.s.d. in the dihedral angle between two l.s. planes) are estimated using the full covariance matrix. The cell e.s.d.'s are taken into account individually in the estimation of e.s.d.'s in distances, angles and torsion angles; correlations between e.s.d.'s in cell parameters are only used when they are defined by crystal symmetry. An approximate (isotropic) treatment of cell e.s.d.'s is used for estimating e.s.d.'s involving l.s. planes.

**Refinement.** Refinement of  $F^2$  against ALL reflections. The weighted  $R$ -factor  $wR$  and goodness of fit  $S$  are based on  $F^2$ , conventional  $R$ -factors  $R$  are based on  $F$ , with  $F$  set to zero for negative  $F^2$ . The threshold expression of  $F^2 > \sigma(F^2)$  is used only for calculating  $R$ -factors(gt) *etc.* and is not relevant to the choice of reflections for refinement.  $R$ -factors based on  $F^2$  are statistically about twice as large as those based on  $F$ , and  $R$ -factors based on ALL data will be even larger.

Fractional atomic coordinates and isotropic or equivalent isotropic displacement parameters ( $\text{\AA}^2$ )

|     | $x$         | $y$         | $z$         | $U_{\text{iso}}^*/U_{\text{eq}}$ |
|-----|-------------|-------------|-------------|----------------------------------|
| Pr1 | 0.13688 (4) | 0.65736 (3) | 0.88899 (3) | 0.01199 (13)                     |
| O1  | 0.1360 (5)  | 0.5899 (6)  | 1.1378 (4)  | 0.0209 (9)                       |
| O2  | 0.2431 (6)  | 0.4573 (6)  | 1.2882 (5)  | 0.0292 (10)                      |
| O3  | 0.4163 (6)  | 0.8435 (6)  | 1.1280 (4)  | 0.0255 (10)                      |
| O4  | 0.0792 (6)  | 0.7141 (5)  | 0.6359 (4)  | 0.0210 (9)                       |
| O5  | -0.0653 (6) | 0.5985 (5)  | 0.3701 (5)  | 0.0240 (9)                       |
| O6  | 0.1917 (5)  | 0.9740 (5)  | 0.9339 (5)  | 0.0211 (9)                       |
| O7  | 0.0683 (6)  | 1.1925 (5)  | 0.9755 (5)  | 0.0221 (9)                       |
| N1  | 0.6714 (7)  | 0.9795 (7)  | 1.3550 (6)  | 0.0213 (11)                      |
| H1  | 0.709 (9)   | 1.056 (6)   | 1.320 (7)   | 0.026*                           |
| C1  | 0.2690 (8)  | 0.5814 (8)  | 1.2460 (6)  | 0.0184 (12)                      |
| C2  | 0.4526 (7)  | 0.7259 (7)  | 1.3291 (6)  | 0.0155 (11)                      |
| C3  | 0.5671 (8)  | 0.7451 (8)  | 1.4747 (7)  | 0.0226 (13)                      |
| H3  | 0.5331      | 0.6633      | 1.5160      | 0.027*                           |
| C4  | 0.7339 (8)  | 0.8845 (9)  | 1.5629 (7)  | 0.0268 (14)                      |
| H4  | 0.8106      | 0.8963      | 1.6620      | 0.032*                           |

## supplementary materials

---

|     |            |            |            |             |
|-----|------------|------------|------------|-------------|
| C5  | 0.7816 (8) | 1.0019 (8) | 1.5011 (7) | 0.0260 (14) |
| H5  | 0.8900     | 1.0978     | 1.5591     | 0.031*      |
| C6  | 0.5042 (8) | 0.8480 (8) | 1.2612 (6) | 0.0176 (12) |
| C7  | 0.0043 (7) | 0.5910 (7) | 0.5025 (6) | 0.0169 (12) |
| C8  | 0.0756 (7) | 1.0482 (7) | 0.9731 (6) | 0.0132 (11) |
| O1W | 0.4579 (6) | 0.7364 (7) | 0.8300 (6) | 0.0344 (11) |
| H1W | 0.526 (8)  | 0.825 (6)  | 0.912 (6)  | 0.052*      |
| H2W | 0.532 (7)  | 0.703 (9)  | 0.781 (7)  | 0.052*      |
| O2W | 0.3042 (6) | 0.4283 (6) | 0.9073 (5) | 0.0256 (9)  |
| H3W | 0.253 (9)  | 0.355 (5)  | 0.938 (6)  | 0.038*      |
| H4W | 0.362 (3)  | 0.520 (3)  | 0.987 (4)  | 0.038*      |

### Atomic displacement parameters ( $\text{\AA}^2$ )

|     | $U^{11}$     | $U^{22}$   | $U^{33}$     | $U^{12}$     | $U^{13}$     | $U^{23}$     |
|-----|--------------|------------|--------------|--------------|--------------|--------------|
| Pr1 | 0.01204 (18) | 0.0123 (2) | 0.01350 (19) | 0.00367 (13) | 0.00302 (12) | 0.00841 (14) |
| O1  | 0.0147 (19)  | 0.030 (3)  | 0.0152 (19)  | 0.0010 (18)  | -0.0001 (16) | 0.0128 (18)  |
| O2  | 0.030 (2)    | 0.023 (3)  | 0.031 (2)    | -0.003 (2)   | 0.0026 (19)  | 0.019 (2)    |
| O3  | 0.0211 (19)  | 0.029 (3)  | 0.019 (2)    | -0.0046 (18) | -0.0042 (16) | 0.0153 (19)  |
| O4  | 0.031 (2)    | 0.015 (2)  | 0.0137 (19)  | 0.0041 (18)  | 0.0044 (17)  | 0.0060 (17)  |
| O5  | 0.040 (2)    | 0.016 (2)  | 0.016 (2)    | 0.0109 (19)  | 0.0039 (18)  | 0.0103 (18)  |
| O6  | 0.0183 (19)  | 0.019 (2)  | 0.035 (2)    | 0.0104 (18)  | 0.0150 (17)  | 0.0138 (19)  |
| O7  | 0.027 (2)    | 0.013 (2)  | 0.036 (2)    | 0.0079 (18)  | 0.0173 (18)  | 0.0158 (19)  |
| N1  | 0.019 (2)    | 0.019 (3)  | 0.025 (3)    | 0.002 (2)    | 0.003 (2)    | 0.012 (2)    |
| C1  | 0.023 (3)    | 0.019 (3)  | 0.013 (3)    | 0.006 (3)    | 0.005 (2)    | 0.006 (2)    |
| C2  | 0.015 (2)    | 0.018 (3)  | 0.015 (3)    | 0.004 (2)    | 0.006 (2)    | 0.008 (2)    |
| C3  | 0.026 (3)    | 0.028 (4)  | 0.018 (3)    | 0.009 (3)    | 0.007 (2)    | 0.016 (3)    |
| C4  | 0.020 (3)    | 0.035 (4)  | 0.019 (3)    | 0.005 (3)    | -0.003 (2)   | 0.012 (3)    |
| C5  | 0.015 (3)    | 0.025 (4)  | 0.029 (3)    | 0.003 (3)    | 0.001 (2)    | 0.006 (3)    |
| C6  | 0.019 (3)    | 0.021 (3)  | 0.015 (3)    | 0.008 (2)    | 0.008 (2)    | 0.006 (2)    |
| C7  | 0.017 (3)    | 0.017 (3)  | 0.019 (3)    | 0.005 (2)    | 0.005 (2)    | 0.011 (2)    |
| C8  | 0.014 (2)    | 0.011 (3)  | 0.013 (3)    | 0.003 (2)    | 0.000 (2)    | 0.005 (2)    |
| O1W | 0.025 (2)    | 0.035 (3)  | 0.034 (3)    | 0.000 (2)    | 0.0112 (19)  | 0.007 (2)    |
| O2W | 0.025 (2)    | 0.030 (3)  | 0.033 (2)    | 0.015 (2)    | 0.0120 (18)  | 0.021 (2)    |

### Geometric parameters ( $\text{\AA}$ , $^\circ$ )

|                       |           |                       |           |
|-----------------------|-----------|-----------------------|-----------|
| Pr1—O3                | 2.458 (4) | O7—C8                 | 1.253 (7) |
| Pr1—O4                | 2.532 (4) | O7—Pr1 <sup>i</sup>   | 2.537 (4) |
| Pr1—O7 <sup>i</sup>   | 2.537 (4) | N1—C5                 | 1.350 (8) |
| Pr1—O5 <sup>ii</sup>  | 2.540 (4) | N1—C6                 | 1.372 (8) |
| Pr1—O1 <sup>iii</sup> | 2.543 (4) | N1—H1                 | 0.86 (6)  |
| Pr1—O6                | 2.555 (4) | C1—C2                 | 1.491 (8) |
| Pr1—O1                | 2.583 (4) | C1—Pr1 <sup>iii</sup> | 3.018 (6) |
| Pr1—O2W               | 2.593 (4) | C2—C3                 | 1.367 (8) |
| Pr1—O1W               | 2.626 (4) | C2—C6                 | 1.434 (8) |
| Pr1—O2 <sup>iii</sup> | 2.734 (4) | C3—C4                 | 1.396 (8) |

|   |             |                            |             |
|---|-------------|----------------------------|-------------|
| Pr1—C1 <sup>iii</sup>                   | 3.018 (6)   | C3—H3                      | 0.9300      |
| Pr1—H4W                                 | 2.44 (4)    | C4—C5                      | 1.352 (9)   |
| O1—C1                                   | 1.280 (7)   | C4—H4                      | 0.9300      |
| O1—Pr1 <sup>iii</sup>                   | 2.543 (4)   | C5—H5                      | 0.9300      |
| O2—C1                                   | 1.253 (7)   | C7—C7 <sup>ii</sup>        | 1.546 (11)  |
| O2—Pr1 <sup>iii</sup>                   | 2.734 (4)   | C8—C8 <sup>i</sup>         | 1.555 (10)  |
| O3—C6                                   | 1.251 (7)   | O1W—H1W                    | 0.84 (5)    |
| O4—C7                                   | 1.248 (7)   | O1W—H2W                    | 0.84 (5)    |
| O5—C7                                   | 1.255 (6)   | O2W—H3W                    | 0.84 (5)    |
| O5—Pr1 <sup>ii</sup>                    | 2.540 (4)   | O2W—H4W                    | 0.83 (3)    |
| O6—C8                                   | 1.249 (6)   |                            |             |
| O3—Pr1—O4                               | 120.86 (13) | O4—Pr1—H4W                 | 127.8 (11)  |
| O3—Pr1—O7 <sup>i</sup>                  | 88.47 (14)  | O7 <sup>i</sup> —Pr1—H4W   | 129.5 (10)  |
| O4—Pr1—O7 <sup>i</sup>                  | 102.37 (13) | O5 <sup>ii</sup> —Pr1—H4W  | 81.2 (5)    |
| O3—Pr1—O5 <sup>ii</sup>                 | 137.09 (15) | O1 <sup>iii</sup> —Pr1—H4W | 88.8 (9)    |
| O4—Pr1—O5 <sup>ii</sup>                 | 63.36 (13)  | O6—Pr1—H4W                 | 129.1 (6)   |
| O7 <sup>i</sup> —Pr1—O5 <sup>ii</sup>   | 134.11 (14) | O1—Pr1—H4W                 | 60.0 (11)   |
| O3—Pr1—O1 <sup>iii</sup>                | 127.58 (12) | O2W—Pr1—H4W                | 18.7 (8)    |
| O4—Pr1—O1 <sup>iii</sup>                | 111.40 (13) | O1W—Pr1—H4W                | 67.4 (11)   |
| O7 <sup>i</sup> —Pr1—O1 <sup>iii</sup>  | 76.36 (13)  | O2 <sup>iii</sup> —Pr1—H4W | 134.2 (6)   |
| O5 <sup>ii</sup> —Pr1—O1 <sup>iii</sup> | 70.57 (14)  | C1 <sup>iii</sup> —Pr1—H4W | 111.2 (8)   |
| O3—Pr1—O6                               | 69.27 (14)  | C1—O1—Pr1 <sup>iii</sup>   | 98.8 (3)    |
| O4—Pr1—O6                               | 65.37 (13)  | C1—O1—Pr1                  | 131.9 (3)   |
| O7 <sup>i</sup> —Pr1—O6                 | 63.08 (12)  | Pr1 <sup>iii</sup> —O1—Pr1 | 118.71 (14) |
| O5 <sup>ii</sup> —Pr1—O6                | 128.42 (12) | C1—O2—Pr1 <sup>iii</sup>   | 90.5 (3)    |
| O1 <sup>iii</sup> —Pr1—O6               | 136.28 (12) | C6—O3—Pr1                  | 140.0 (4)   |
| O3—Pr1—O1                               | 66.31 (12)  | C7—O4—Pr1                  | 119.9 (3)   |
| O4—Pr1—O1                               | 170.59 (12) | C7—O5—Pr1 <sup>ii</sup>    | 120.3 (4)   |
| O7 <sup>i</sup> —Pr1—O1                 | 70.75 (13)  | C8—O6—Pr1                  | 120.7 (3)   |
| O5 <sup>ii</sup> —Pr1—O1                | 116.45 (13) | C8—O7—Pr1 <sup>i</sup>     | 121.3 (3)   |
| O1 <sup>iii</sup> —Pr1—O1               | 61.29 (14)  | C5—N1—C6                   | 125.6 (5)   |
| O6—Pr1—O1                               | 115.03 (13) | C5—N1—H1                   | 116 (5)     |
| O3—Pr1—O2W                              | 81.72 (14)  | C6—N1—H1                   | 118 (4)     |
| O4—Pr1—O2W                              | 117.75 (13) | O2—C1—O1                   | 120.7 (5)   |
| O7 <sup>i</sup> —Pr1—O2W                | 137.99 (13) | O2—C1—C2                   | 119.7 (5)   |
| O5 <sup>ii</sup> —Pr1—O2W               | 63.32 (13)  | O1—C1—C2                   | 119.5 (5)   |
| O1 <sup>iii</sup> —Pr1—O2W              | 77.80 (13)  | O2—C1—Pr1 <sup>iii</sup>   | 65.0 (3)    |
| O6—Pr1—O2W                              | 144.55 (13) | O1—C1—Pr1 <sup>iii</sup>   | 56.4 (3)    |
| O1—Pr1—O2W                              | 67.88 (13)  | C2—C1—Pr1 <sup>iii</sup>   | 168.4 (4)   |
| O3—Pr1—O1W                              | 65.67 (14)  | C3—C2—C6                   | 120.3 (5)   |
| O4—Pr1—O1W                              | 69.36 (14)  | C3—C2—C1                   | 119.0 (5)   |
| O7 <sup>i</sup> —Pr1—O1W                | 139.13 (15) | C6—C2—C1                   | 120.6 (5)   |
| O5 <sup>ii</sup> —Pr1—O1W               | 79.60 (14)  | C2—C3—C4                   | 121.5 (6)   |

## supplementary materials

|  |             |                        |           |
|--|-------------|------------------------|-----------|
| O1 <sup>iii</sup> —Pr1—O1W               | 144.47 (15) | C2—C3—H3               | 119.2     |
| O6—Pr1—O1W                               | 77.88 (14)  | C4—C3—H3               | 119.2     |
| O1—Pr1—O1W                               | 120.06 (14) | C5—C4—C3               | 118.5 (5) |
| O2W—Pr1—O1W                              | 71.70 (15)  | C5—C4—H4               | 120.7     |
| O3—Pr1—O2 <sup>iii</sup>                 | 153.63 (15) | C3—C4—H4               | 120.7     |
| O4—Pr1—O2 <sup>iii</sup>                 | 67.95 (13)  | N1—C5—C4               | 119.8 (6) |
| O7 <sup>i</sup> —Pr1—O2 <sup>iii</sup>   | 65.16 (14)  | N1—C5—H5               | 120.1     |
| O5 <sup>ii</sup> —Pr1—O2 <sup>iii</sup>  | 69.19 (14)  | C4—C5—H5               | 120.1     |
| O1 <sup>iii</sup> —Pr1—O2 <sup>iii</sup> | 49.16 (12)  | O3—C6—N1               | 118.7 (5) |
| O6—Pr1—O2 <sup>iii</sup>                 | 96.62 (13)  | O3—C6—C2               | 127.0 (5) |
| O1—Pr1—O2 <sup>iii</sup>                 | 102.91 (12) | N1—C6—C2               | 114.3 (5) |
| O2W—Pr1—O2 <sup>iii</sup>                | 117.69 (14) | O4—C7—O5               | 127.0 (5) |
| O1W—Pr1—O2 <sup>iii</sup>                | 135.00 (14) | O4—C7—C7 <sup>ii</sup> | 117.4 (6) |
| O3—Pr1—C1 <sup>iii</sup>                 | 147.53 (14) | O5—C7—C7 <sup>ii</sup> | 115.7 (6) |
| O4—Pr1—C1 <sup>iii</sup>                 | 88.65 (14)  | O6—C8—O7               | 127.4 (5) |
| O7 <sup>i</sup> —Pr1—C1 <sup>iii</sup>   | 70.79 (14)  | O6—C8—C8 <sup>i</sup>  | 116.4 (6) |
| O5 <sup>ii</sup> —Pr1—C1 <sup>iii</sup>  | 65.76 (14)  | O7—C8—C8 <sup>i</sup>  | 116.2 (6) |
| O1 <sup>iii</sup> —Pr1—C1 <sup>iii</sup> | 24.77 (14)  | Pr1—O1W—H1W            | 103 (4)   |
| O6—Pr1—C1 <sup>iii</sup>                 | 118.47 (14) | Pr1—O1W—H2W            | 148 (5)   |
| O1—Pr1—C1 <sup>iii</sup>                 | 83.03 (13)  | H1W—O1W—H2W            | 107 (6)   |
| O2W—Pr1—C1 <sup>iii</sup>                | 96.95 (15)  | Pr1—O2W—H3W            | 116 (5)   |
| O1W—Pr1—C1 <sup>iii</sup>                | 144.76 (15) | Pr1—O2W—H4W            | 70 (3)    |
| O2 <sup>iii</sup> —Pr1—C1 <sup>iii</sup> | 24.54 (14)  | H3W—O2W—H4W            | 108 (4)   |
| O3—Pr1—H4W                               | 63.2 (7)    |                        |           |

Symmetry codes: (i)  $-x, -y+2, -z+2$ ; (ii)  $-x, -y+1, -z+1$ ; (iii)  $-x, -y+1, -z+2$ .

### Hydrogen-bond geometry ( $\text{\AA}, ^\circ$ )

| $D-H\cdots A$                     | $D-H$    | $H\cdots A$ | $D\cdots A$ | $D-H\cdots A$ |
|-----------------------------------|----------|-------------|-------------|---------------|
| O2W—H4W $\cdots$ O3               | 0.83 (3) | 2.56 (2)    | 3.306 (6)   | 149 (4)       |
| O2W—H3W $\cdots$ O7 <sup>iv</sup> | 0.84 (5) | 1.95 (6)    | 2.764 (6)   | 164 (7)       |
| O2W—H4W $\cdots$ O2W <sup>v</sup> | 0.83 (3) | 2.37 (2)    | 2.820 (8)   | 114 (2)       |
| O1W—H2W $\cdots$ O2 <sup>v</sup>  | 0.85 (6) | 2.49 (4)    | 3.280 (7)   | 157 (8)       |
| O1W—H1W $\cdots$ O3               | 0.84 (5) | 2.34 (6)    | 2.760 (6)   | 111 (5)       |
| O1W—H1W $\cdots$ O6 <sup>vi</sup> | 0.84 (5) | 2.24 (3)    | 3.002 (6)   | 151 (6)       |
| N1—H1 $\cdots$ O4 <sup>vi</sup>   | 0.86 (6) | 2.12 (4)    | 2.878 (7)   | 146 (6)       |

Symmetry codes: (iv)  $x, y-1, z$ ; (v)  $-x+1, -y+1, -z+2$ ; (vi)  $-x+1, -y+2, -z+2$ .



Fig. 2

