

Acta Crystallographica Section E

Structure Reports

Online

ISSN 1600-5368

2,5-Dimethyl-1-phenylsulfonyl-1H-pyrrole-3,4-dicarbaldehyde

 P. R. Seshadri,^{a*} B. Balakrishnan,^b K. Ilangovan,^c
 R. Sureshbabu^d and A. K. Mohanakrishnan^d

^aPostgraduate and Research Department of Physics, Agurchand Manmull Jain College, Chennai 600 114, India, ^bDepartment of Physics, P. T. Lee Chengalvaraya Naicker College of Engineering and Technology, Kancheepuram 631 502, India, ^cPostgraduate and Research Department of Physics, RKM Vivekananda College, Chennai 600 004, India, and ^dDepartment of Organic Chemistry, University of Madras, Guindy Campus, Chennai 600 025, India

Correspondence e-mail: seshadri_pr@yahoo.com

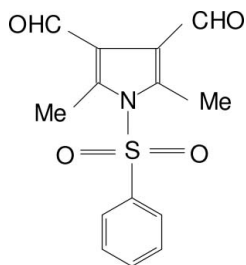
Received 20 January 2009; accepted 6 February 2009

 Key indicators: single-crystal X-ray study; $T = 293$ K; mean $\sigma(\text{C}-\text{C}) = 0.002$ Å; R factor = 0.048; wR factor = 0.154; data-to-parameter ratio = 25.9.

In the title compound, $\text{C}_{14}\text{H}_{13}\text{NO}_4\text{S}$, the mean planes of the pyrrole and phenyl rings form a dihedral angle of $88.7(1)^\circ$. The aldehyde groups are slightly twisted from the pyrrole plane. In the crystal structure, molecules are linked into a three-dimensional framework by $\text{C}-\text{H}\cdots\text{O}$ hydrogen bonds.

Related literature

For general background, see: Ali *et al.* (1989); Amal Raj *et al.* (2003). For bond-length data, see: Allen *et al.* (1987). For N-atom hybridization details, see: Beddoes *et al.* (1986).



Experimental

Crystal data

$\text{C}_{14}\text{H}_{13}\text{NO}_4\text{S}$
 $M_r = 291.31$
 Monoclinic, $P2_1/n$

$a = 9.0257(3)$ Å
 $b = 12.6240(5)$ Å
 $c = 11.9914(5)$ Å

$\beta = 97.700(2)^\circ$
 $V = 1353.99(9)$ Å³
 $Z = 4$
 Mo $K\alpha$ radiation

$\mu = 0.25$ mm⁻¹
 $T = 293$ K
 $0.25 \times 0.20 \times 0.20$ mm

Data collection

Bruker Kappa APEXII area-detector diffractometer
 Absorption correction: multi-scan (SADABS; Sheldrick, 2001)
 $T_{\min} = 0.940$, $T_{\max} = 0.952$

19609 measured reflections
 4736 independent reflections
 3164 reflections with $I > 2\sigma(I)$
 $R_{\text{int}} = 0.032$

Refinement

$R[F^2 > 2\sigma(F^2)] = 0.048$
 $wR(F^2) = 0.154$
 $S = 1.00$
 4736 reflections

183 parameters
 H-atom parameters constrained
 $\Delta\rho_{\text{max}} = 0.19$ e Å⁻³
 $\Delta\rho_{\text{min}} = -0.42$ e Å⁻³

Table 1

Hydrogen-bond geometry (Å, °).

| $D-H\cdots A$ | $D-H$ | $H\cdots A$ | $D\cdots A$ | $D-H\cdots A$ |
|---|-------|-------------|-------------|---------------|
| $\text{C6}-\text{H6}\cdots\text{O3}$ | 0.93 | 2.46 | 3.077 (2) | 124 |
| $\text{C7}-\text{H7A}\cdots\text{O4}$ | 0.96 | 2.33 | 3.021 (3) | 128 |
| $\text{C11}-\text{H11}\cdots\text{O4}^i$ | 0.93 | 2.53 | 3.456 (2) | 174 |
| $\text{C13}-\text{H13}\cdots\text{O2}$ | 0.93 | 2.52 | 3.304 (2) | 143 |
| $\text{C14}-\text{H14}\cdots\text{O3}^{ii}$ | 0.93 | 2.57 | 3.383 (2) | 146 |

 Symmetry codes: (i) $x, y, z - 1$; (ii) $-x + 1, -y + 1, -z + 1$.

Data collection: APEX2 (Bruker, 2004); cell refinement: SAINT (Bruker, 2004); data reduction: SAINT; program(s) used to solve structure: SHELXS97 (Sheldrick, 2008); program(s) used to refine structure: SHELXL97 (Sheldrick, 2008); molecular graphics: ORTEP-3 (Farrugia, 1997) and PLATON (Spek, 2009); software used to prepare material for publication: PARST (Nardelli, 1995).

BB and RS thank Dr Babu Varghese, SAIF, IIT Madras, India, for his help with the data collection.

Supplementary data and figures for this paper are available from the IUCr electronic archives (Reference: WN2307).

References

- Ali, R., Misra, B. & Nizamuddin (1989). *Indian J. Chem. Sect. B*, **28**, 526–528.
 Allen, F. H., Kennard, O., Watson, D. G., Brammer, L., Orpen, A. G. & Taylor, R. (1987). *J. Chem. Soc. Perkin Trans. 2*, pp. S1–19.
 Amal Raj, A., Raghunathan, R., Sridevikumari, M. R. & Raman, N. (2003). *Bioorg. Med. Chem.* **11**, 407–419.
 Beddoes, R. L., Dalton, L., Joule, J. A., Mills, O. S., Street, J. O. & Watt, C. I. F. (1986). *J. Chem. Soc. Perkin Trans. 2*, pp. 787–797.
 Bruker (2004). APEX2 and SAINT. Bruker AXS Inc., Madison, Wisconsin, USA.
 Farrugia, L. J. (1997). *J. Appl. Cryst.* **30**, 565.
 Nardelli, M. (1995). *J. Appl. Cryst.* **28**, 659.
 Sheldrick, G. M. (2001). SADABS. University of Göttingen, Germany.
 Sheldrick, G. M. (2008). *Acta Cryst.* **A64**, 112–122.
 Spek, A. L. (2009). *Acta Cryst.* **D65**, 148–155.

supplementary materials

Acta Cryst. (2009). E65, o531 [doi:10.1107/S1600536809004425]

2,5-Dimethyl-1-phenylsulfonyl-1*H*-pyrrole-3,4-dicarbaldehyde

P. R. Seshadri, B. Balakrishnan, K. Ilangovan, R. Sureshbabu and A. K. Mohanakrishnan

Comment

Heterocyclic compounds, especially five-membered rings, have occupied an important place among organic compounds because of their biological activities. The fungicidal activity of novel heterocycles has been reported by Ali *et al.* (1989). These are crucial intermediates for various pyrrole natural products possessing antitumour properties. They are found to have antifungal activity against various pathogens (Amal Raj *et al.*, 2003). Against this background and in order to obtain detailed information on molecular conformation in the solid state, an X-ray crystallographic study of the title compound has been carried out and the results are presented here.

The geometric parameters are normal (Allen *et al.*, 1987). The mean planes of the pyrrole and phenyl rings form a dihedral angle of 88.7 (1)°. The aldehyde groups are slightly twisted from the pyrrole plane, with O3 towards C2 and O4 towards C1, as evidenced by the torsion angles C2—C3—C5—O3 = 2.1 (3)° and C1—C2—C6—O4 = 5.9 (3)° (Fig. 1). The sum of the angles at N is 360.0, which is an indication of sp^2 hybridization (Beddoes *et al.*, 1986). In the crystal structure, the molecules are linked into a three-dimensional framework by C—H...O hydrogen bonds (Fig. 2 and Table 1).

Experimental

To a suspension of 3°-butoxide (4.4 g, 39.7 mmol) in dry THF (20 ml), 18-crown-6 (catalyst) and 2,5-dimethyl-1*H*-pyrrole-3,4-dicarbaldehyde (4 g, 26.5 mmol) in dry THF were added slowly at room temperature and the reaction mixture was stirred for 15 min. To this, PhSO₂Cl (6.1 g, 34.4 mmol) in dry THF (15 ml) was added and stirred for another 4 h. The mixture was then poured over ice–water (500 ml) and the solid obtained was filtered. The product, 2,5-dimethyl-1-(phenyl sulfonyl)-1*H*-pyrrole-3,4-dicarbaldehyde, was recrystallized from methanol. Yield 4.9 g (64%). M.p = 395 K.

Refinement

All H atoms were positioned geometrically and allowed to ride on their parent atoms, with C—H = 0.93–0.96 Å and $U_{\text{iso}}(\text{H}) = 1.5 U_{\text{eq}}(\text{C})$ for methyl H atoms and $1.2 U_{\text{eq}}(\text{C})$ for other H atoms.

Figures

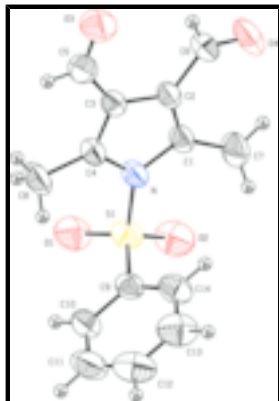


Fig. 1. Molecular structure of the title compound showing 30% probability displacement ellipsoids. Hydrogen atoms are represented by spheres of arbitrary radius.

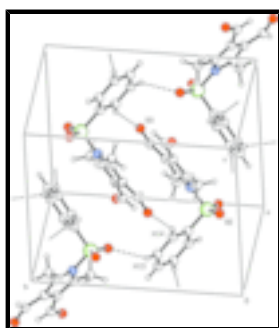


Fig. 2. Crystal packing of the title compound. Hydrogen bonds are shown as dashed lines.

2,5-Dimethyl-1-phenylsulfonyl-1*H*-pyrrole-3,4-dicarbaldehyde

Crystal data

$C_{14}H_{13}NO_4S$

$M_r = 291.31$

Monoclinic, $P2_1/n$

$a = 9.0257(3) \text{ \AA}$

$b = 12.6240(5) \text{ \AA}$

$c = 11.9914(5) \text{ \AA}$

$\beta = 97.700(2)^\circ$

$V = 1353.99(9) \text{ \AA}^3$

$Z = 4$

$F_{000} = 608$

$D_x = 1.429 \text{ Mg m}^{-3}$

Mo $K\alpha$ radiation

$\lambda = 0.71073 \text{ \AA}$

Cell parameters from 6814 reflections

$\theta = 2.4\text{--}32.2^\circ$

$\mu = 0.25 \text{ mm}^{-1}$

$T = 293 \text{ K}$

Block, colourless

$0.25 \times 0.20 \times 0.20 \text{ mm}$

Data collection

Bruker Kappa-APEXII area-detector diffractometer

Radiation source: fine-focus sealed tube

Monochromator: graphite

$T = 293 \text{ K}$

ω scans

4736 independent reflections

3164 reflections with $I > 2\sigma(I)$

$R_{\text{int}} = 0.032$

$\theta_{\text{max}} = 32.2^\circ$

$\theta_{\text{min}} = 2.4^\circ$

Absorption correction: multi-scan
(SADABS; Sheldrick, 2001) $h = -13 \rightarrow 10$
 $T_{\min} = 0.940$, $T_{\max} = 0.952$ $k = -18 \rightarrow 18$
 19609 measured reflections $l = -16 \rightarrow 17$

Refinement

Refinement on F^2 Secondary atom site location: difference Fourier map
 Least-squares matrix: full Hydrogen site location: inferred from neighbouring sites
 $R[F^2 > 2\sigma(F^2)] = 0.048$ H-atom parameters constrained
 $wR(F^2) = 0.154$ $w = 1/[\sigma^2(F_o^2) + (0.0787P)^2 + 0.2246P]$
 where $P = (F_o^2 + 2F_c^2)/3$
 $S = 1.00$ $(\Delta/\sigma)_{\max} < 0.001$
 4736 reflections $\Delta\rho_{\max} = 0.19 \text{ e } \text{\AA}^{-3}$
 183 parameters $\Delta\rho_{\min} = -0.42 \text{ e } \text{\AA}^{-3}$
 Primary atom site location: structure-invariant direct methods Extinction correction: none

Special details

Geometry. All e.s.d.'s (except the e.s.d. in the dihedral angle between two l.s. planes) are estimated using the full covariance matrix. The cell e.s.d.'s are taken into account individually in the estimation of e.s.d.'s in distances, angles and torsion angles; correlations between e.s.d.'s in cell parameters are only used when they are defined by crystal symmetry. An approximate (isotropic) treatment of cell e.s.d.'s is used for estimating e.s.d.'s involving l.s. planes.

Refinement. Refinement of F^2 against ALL reflections. The weighted R -factor wR and goodness of fit S are based on F^2 , conventional R -factors R are based on F , with F set to zero for negative F^2 . The threshold expression of $F^2 > \sigma(F^2)$ is used only for calculating R -factors(gt) *etc.* and is not relevant to the choice of reflections for refinement. R -factors based on F^2 are statistically about twice as large as those based on F , and R -factors based on ALL data will be even larger.

Fractional atomic coordinates and isotropic or equivalent isotropic displacement parameters (\AA^2)

| | x | y | z | $U_{\text{iso}}^*/U_{\text{eq}}$ |
|----|--------------|--------------|--------------|----------------------------------|
| S1 | 0.51190 (5) | 0.21083 (3) | 0.25629 (3) | 0.05026 (14) |
| N | 0.56878 (14) | 0.29263 (9) | 0.36572 (10) | 0.0417 (3) |
| O1 | 0.64275 (15) | 0.17150 (11) | 0.21659 (11) | 0.0704 (4) |
| O3 | 0.82639 (16) | 0.54763 (12) | 0.58440 (12) | 0.0777 (4) |
| O2 | 0.40939 (17) | 0.13956 (10) | 0.29555 (12) | 0.0743 (4) |
| O4 | 0.49857 (19) | 0.36086 (17) | 0.70677 (12) | 0.1023 (6) |
| C1 | 0.51247 (15) | 0.29778 (11) | 0.46937 (11) | 0.0422 (3) |
| C2 | 0.59280 (15) | 0.37280 (11) | 0.53213 (11) | 0.0404 (3) |
| C3 | 0.69918 (14) | 0.41747 (11) | 0.46621 (11) | 0.0383 (3) |
| C4 | 0.68371 (15) | 0.36717 (11) | 0.36473 (11) | 0.0412 (3) |
| C5 | 0.80621 (18) | 0.50177 (13) | 0.49571 (14) | 0.0524 (4) |
| H5 | 0.8646 | 0.5223 | 0.4412 | 0.063* |
| C6 | 0.57651 (19) | 0.40278 (16) | 0.64774 (13) | 0.0579 (4) |
| H6 | 0.6327 | 0.4602 | 0.6779 | 0.069* |

supplementary materials

| | | | | |
|-----|--------------|--------------|---------------|------------|
| C7 | 0.3863 (2) | 0.23246 (17) | 0.50008 (16) | 0.0661 (5) |
| H7A | 0.3587 | 0.2571 | 0.5702 | 0.099* |
| H7B | 0.4168 | 0.1597 | 0.5075 | 0.099* |
| H7C | 0.3022 | 0.2386 | 0.4423 | 0.099* |
| C8 | 0.7684 (2) | 0.38292 (17) | 0.26769 (14) | 0.0662 (5) |
| H8A | 0.8349 | 0.4421 | 0.2825 | 0.099* |
| H8B | 0.6997 | 0.3965 | 0.2009 | 0.099* |
| H8C | 0.8253 | 0.3203 | 0.2571 | 0.099* |
| C9 | 0.41822 (17) | 0.29562 (12) | 0.15557 (12) | 0.0455 (3) |
| C10 | 0.4612 (2) | 0.29939 (16) | 0.04944 (14) | 0.0604 (4) |
| H10 | 0.5403 | 0.2583 | 0.0315 | 0.072* |
| C11 | 0.3837 (3) | 0.3659 (2) | -0.02973 (16) | 0.0767 (6) |
| H11 | 0.4104 | 0.3696 | -0.1019 | 0.092* |
| C12 | 0.2683 (3) | 0.42608 (17) | -0.00229 (17) | 0.0780 (6) |
| H12 | 0.2176 | 0.4707 | -0.0561 | 0.094* |
| C13 | 0.2260 (3) | 0.42188 (16) | 0.10310 (18) | 0.0744 (6) |
| H13 | 0.1476 | 0.4638 | 0.1207 | 0.089* |
| C14 | 0.3000 (2) | 0.35534 (13) | 0.18281 (14) | 0.0579 (4) |
| H14 | 0.2708 | 0.3507 | 0.2541 | 0.069* |

Atomic displacement parameters (\AA^2)

| | U^{11} | U^{22} | U^{33} | U^{12} | U^{13} | U^{23} |
|-----|-------------|-------------|-------------|---------------|--------------|---------------|
| S1 | 0.0664 (3) | 0.0385 (2) | 0.0462 (2) | -0.00334 (15) | 0.00855 (17) | -0.00739 (14) |
| N | 0.0513 (6) | 0.0408 (6) | 0.0347 (5) | -0.0058 (5) | 0.0120 (5) | -0.0013 (4) |
| O1 | 0.0800 (8) | 0.0655 (8) | 0.0655 (8) | 0.0209 (7) | 0.0084 (6) | -0.0213 (6) |
| O3 | 0.0858 (9) | 0.0823 (10) | 0.0652 (8) | -0.0240 (7) | 0.0105 (7) | -0.0272 (7) |
| O2 | 0.1039 (10) | 0.0500 (7) | 0.0681 (8) | -0.0305 (7) | 0.0080 (7) | 0.0000 (6) |
| O4 | 0.1016 (12) | 0.1637 (17) | 0.0496 (8) | -0.0353 (11) | 0.0398 (8) | -0.0136 (9) |
| C1 | 0.0459 (7) | 0.0463 (7) | 0.0362 (6) | -0.0003 (5) | 0.0121 (5) | 0.0061 (5) |
| C2 | 0.0429 (6) | 0.0467 (7) | 0.0333 (6) | 0.0049 (5) | 0.0115 (5) | 0.0032 (5) |
| C3 | 0.0418 (6) | 0.0389 (7) | 0.0347 (6) | 0.0024 (5) | 0.0074 (5) | 0.0024 (5) |
| C4 | 0.0465 (7) | 0.0430 (7) | 0.0358 (6) | -0.0019 (5) | 0.0123 (5) | 0.0015 (5) |
| C5 | 0.0560 (8) | 0.0535 (9) | 0.0480 (8) | -0.0081 (7) | 0.0078 (6) | -0.0012 (7) |
| C6 | 0.0595 (9) | 0.0796 (12) | 0.0366 (7) | 0.0025 (8) | 0.0143 (6) | -0.0055 (7) |
| C7 | 0.0662 (10) | 0.0772 (12) | 0.0595 (10) | -0.0208 (9) | 0.0248 (8) | 0.0053 (9) |
| C8 | 0.0784 (12) | 0.0817 (13) | 0.0445 (9) | -0.0255 (10) | 0.0295 (8) | -0.0068 (8) |
| C9 | 0.0551 (8) | 0.0435 (7) | 0.0379 (7) | -0.0089 (6) | 0.0067 (6) | -0.0098 (5) |
| C10 | 0.0643 (10) | 0.0774 (12) | 0.0411 (8) | -0.0095 (8) | 0.0134 (7) | -0.0091 (8) |
| C11 | 0.0942 (15) | 0.0952 (16) | 0.0402 (9) | -0.0202 (12) | 0.0072 (9) | 0.0005 (9) |
| C12 | 0.1054 (16) | 0.0665 (12) | 0.0567 (11) | -0.0007 (11) | -0.0086 (11) | 0.0022 (9) |
| C13 | 0.0900 (14) | 0.0586 (11) | 0.0710 (12) | 0.0162 (10) | -0.0029 (10) | -0.0134 (9) |
| C14 | 0.0742 (11) | 0.0527 (9) | 0.0472 (9) | 0.0036 (8) | 0.0099 (8) | -0.0136 (7) |

Geometric parameters (\AA , $^\circ$)

| | | | |
|-------|-------------|--------|--------|
| S1—O2 | 1.4155 (13) | C7—H7A | 0.9600 |
| S1—O1 | 1.4209 (13) | C7—H7B | 0.9600 |
| S1—N | 1.6945 (12) | C7—H7C | 0.9600 |

| | | | |
|------------|--------------|-------------|--------------|
| S1—C9 | 1.7452 (17) | C8—H8A | 0.9600 |
| N—C4 | 1.4018 (17) | C8—H8B | 0.9600 |
| N—C1 | 1.4060 (17) | C8—H8C | 0.9600 |
| O3—C5 | 1.203 (2) | C9—C10 | 1.380 (2) |
| O4—C6 | 1.187 (2) | C9—C14 | 1.381 (2) |
| C1—C2 | 1.358 (2) | C10—C11 | 1.385 (3) |
| C1—C7 | 1.492 (2) | C10—H10 | 0.9300 |
| C2—C3 | 1.4382 (18) | C11—C12 | 1.364 (3) |
| C2—C6 | 1.463 (2) | C11—H11 | 0.9300 |
| C3—C4 | 1.3631 (19) | C12—C13 | 1.370 (3) |
| C3—C5 | 1.449 (2) | C12—H12 | 0.9300 |
| C4—C8 | 1.4890 (19) | C13—C14 | 1.376 (3) |
| C5—H5 | 0.9300 | C13—H13 | 0.9300 |
| C6—H6 | 0.9300 | C14—H14 | 0.9300 |
| O2—S1—O1 | 119.94 (9) | H7A—C7—H7B | 109.5 |
| O2—S1—N | 105.88 (7) | C1—C7—H7C | 109.5 |
| O1—S1—N | 107.05 (7) | H7A—C7—H7C | 109.5 |
| O2—S1—C9 | 110.02 (8) | H7B—C7—H7C | 109.5 |
| O1—S1—C9 | 109.26 (8) | C4—C8—H8A | 109.5 |
| N—S1—C9 | 103.33 (7) | C4—C8—H8B | 109.5 |
| C4—N—C1 | 109.39 (11) | H8A—C8—H8B | 109.5 |
| C4—N—S1 | 123.39 (9) | C4—C8—H8C | 109.5 |
| C1—N—S1 | 127.22 (10) | H8A—C8—H8C | 109.5 |
| C2—C1—N | 107.03 (11) | H8B—C8—H8C | 109.5 |
| C2—C1—C7 | 128.14 (13) | C10—C9—C14 | 121.40 (16) |
| N—C1—C7 | 124.83 (14) | C10—C9—S1 | 119.29 (14) |
| C1—C2—C3 | 108.37 (12) | C14—C9—S1 | 119.29 (12) |
| C1—C2—C6 | 126.27 (13) | C9—C10—C11 | 118.31 (18) |
| C3—C2—C6 | 125.35 (14) | C9—C10—H10 | 120.8 |
| C4—C3—C2 | 108.18 (12) | C11—C10—H10 | 120.8 |
| C4—C3—C5 | 123.06 (13) | C12—C11—C10 | 120.27 (18) |
| C2—C3—C5 | 128.76 (13) | C12—C11—H11 | 119.9 |
| C3—C4—N | 107.02 (11) | C10—C11—H11 | 119.9 |
| C3—C4—C8 | 129.31 (14) | C11—C12—C13 | 121.2 (2) |
| N—C4—C8 | 123.67 (13) | C11—C12—H12 | 119.4 |
| O3—C5—C3 | 125.90 (15) | C13—C12—H12 | 119.4 |
| O3—C5—H5 | 117.1 | C12—C13—C14 | 119.66 (19) |
| C3—C5—H5 | 117.1 | C12—C13—H13 | 120.2 |
| O4—C6—C2 | 126.33 (18) | C14—C13—H13 | 120.2 |
| O4—C6—H6 | 116.8 | C13—C14—C9 | 119.18 (16) |
| C2—C6—H6 | 116.8 | C13—C14—H14 | 120.4 |
| C1—C7—H7A | 109.5 | C9—C14—H14 | 120.4 |
| C1—C7—H7B | 109.5 | | |
| O2—S1—N—C4 | 172.55 (12) | C1—N—C4—C3 | 0.29 (16) |
| O1—S1—N—C4 | 43.51 (14) | S1—N—C4—C3 | -179.53 (10) |
| C9—S1—N—C4 | -71.78 (13) | C1—N—C4—C8 | 179.88 (15) |
| O2—S1—N—C1 | -7.23 (15) | S1—N—C4—C8 | 0.1 (2) |
| O1—S1—N—C1 | -136.28 (13) | C4—C3—C5—O3 | -178.68 (17) |

supplementary materials

| | | | |
|-------------|--------------|-----------------|--------------|
| C9—S1—N—C1 | 108.43 (13) | C2—C3—C5—O3 | 2.1 (3) |
| C4—N—C1—C2 | -1.03 (16) | C1—C2—C6—O4 | 5.9 (3) |
| S1—N—C1—C2 | 178.78 (10) | C3—C2—C6—O4 | -173.12 (19) |
| C4—N—C1—C7 | 178.16 (15) | O2—S1—C9—C10 | -122.33 (14) |
| S1—N—C1—C7 | -2.0 (2) | O1—S1—C9—C10 | 11.30 (15) |
| N—C1—C2—C3 | 1.33 (16) | N—S1—C9—C10 | 125.00 (13) |
| C7—C1—C2—C3 | -177.83 (16) | O2—S1—C9—C14 | 55.92 (14) |
| N—C1—C2—C6 | -177.86 (14) | O1—S1—C9—C14 | -170.46 (12) |
| C7—C1—C2—C6 | 3.0 (3) | N—S1—C9—C14 | -56.75 (13) |
| C1—C2—C3—C4 | -1.18 (16) | C14—C9—C10—C11 | 0.7 (3) |
| C6—C2—C3—C4 | 178.02 (14) | S1—C9—C10—C11 | 178.93 (14) |
| C1—C2—C3—C5 | 178.14 (14) | C9—C10—C11—C12 | 0.3 (3) |
| C6—C2—C3—C5 | -2.7 (2) | C10—C11—C12—C13 | -0.4 (3) |
| C2—C3—C4—N | 0.53 (15) | C11—C12—C13—C14 | -0.5 (3) |
| C5—C3—C4—N | -178.84 (13) | C12—C13—C14—C9 | 1.4 (3) |
| C2—C3—C4—C8 | -179.04 (17) | C10—C9—C14—C13 | -1.6 (2) |
| C5—C3—C4—C8 | 1.6 (3) | S1—C9—C14—C13 | -179.77 (14) |

Hydrogen-bond geometry (\AA , $^\circ$)

| <i>D</i> —H \cdots <i>A</i> | <i>D</i> —H | H \cdots <i>A</i> | <i>D</i> \cdots <i>A</i> | <i>D</i> —H \cdots <i>A</i> |
|-----------------------------------|-------------|---------------------|----------------------------|-------------------------------|
| C6—H6 \cdots O3 | 0.93 | 2.46 | 3.077 (2) | 124 |
| C7—H7A \cdots O4 | 0.96 | 2.33 | 3.021 (3) | 128 |
| C11—H11 \cdots O4 ⁱ | 0.93 | 2.53 | 3.456 (2) | 174 |
| C13—H13 \cdots O2 ⁱ | 0.93 | 2.52 | 3.304 (2) | 143 |
| C14—H14 \cdots O3 ⁱⁱ | 0.93 | 2.57 | 3.383 (2) | 146 |

Symmetry codes: (i) $x, y, z-1$; (ii) $-x+1, -y+1, -z+1$.

Fig. 1

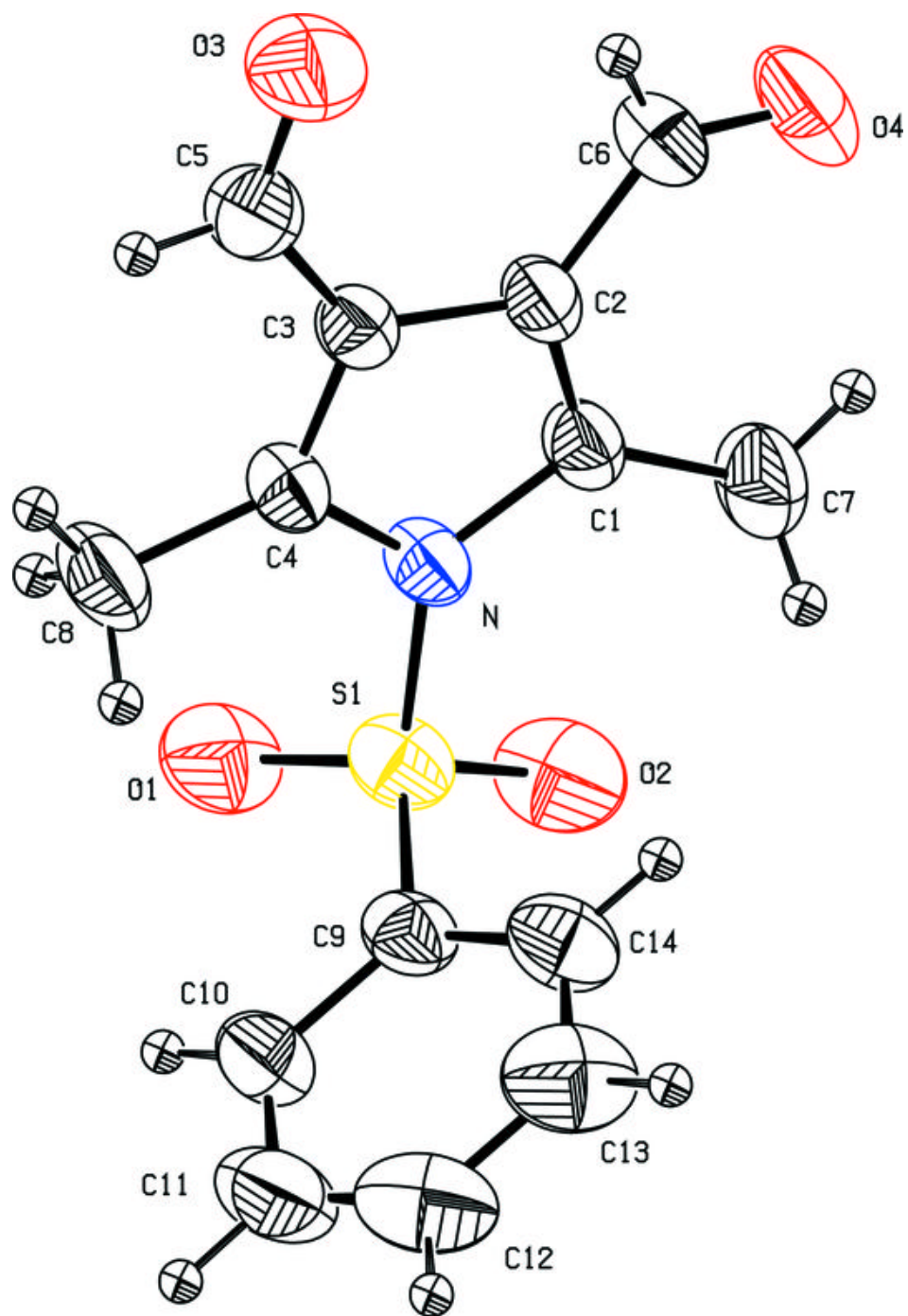


Fig. 2

