

Acta Crystallographica Section E

Structure Reports

Online

ISSN 1600-5368

4-Azido-2-chloro-6-methylquinoline

 S. Natarajan,^a K. Rajesh,^b V. Vijayakumar,^b J. Suresh^c and P. L. Nilantha Lakshman^{d*}

^aDepartment of Physics, Madurai Kamaraj University, Madurai 625 021, India, ^bOrganic Chemistry Division, School of Science and Humanities, VIT University, Vellore 632 014, India, ^cDepartment of Physics, The Madura College, Madurai 625 011, India, and ^dDepartment of Food Science and Technology, Faculty of Agriculture, University of Ruhuna, Mapalana, Kamburupitiya 81100, Sri Lanka
Correspondence e-mail: nilanthalakshman@yahoo.co.uk

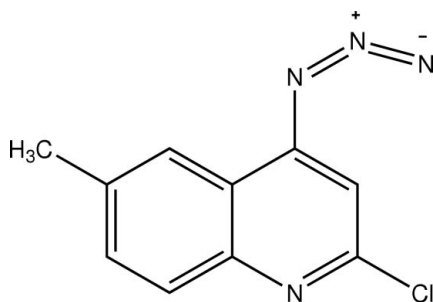
Received 24 February 2009; accepted 25 February 2009

Key indicators: single-crystal X-ray study; $T = 293$ K; mean $\sigma(\text{C}-\text{C}) = 0.004$ Å; R factor = 0.057; wR factor = 0.180; data-to-parameter ratio = 12.7.

In the title compound, $\text{C}_{10}\text{H}_7\text{ClN}_4$, the quinoline ring system is planar [maximum deviation 0.0035 (10) Å]. The crystal structure is stabilized by van der Waals and π - π stacking interactions [centroid-centroid distance 3.6456 (17) Å].

Related literature

For quinoline derivatives as anti-tuberculosis agents, see: Jain *et al.* (2005).



Experimental

Crystal data

$\text{C}_{10}\text{H}_7\text{ClN}_4$
 $M_r = 218.65$
 Triclinic, $P\bar{1}$
 $a = 6.9517$ (4) Å
 $b = 7.6078$ (6) Å
 $c = 10.0191$ (9) Å
 $\alpha = 75.694$ (7)°
 $\beta = 82.147$ (8)°
 $\gamma = 76.532$ (7)°
 $V = 497.57$ (7) Å³
 $Z = 2$
 Mo $K\alpha$ radiation
 $\mu = 0.35$ mm⁻¹
 $T = 293$ K
 $0.19 \times 0.17 \times 0.14$ mm

Data collection

Nonius MACH-3 diffractometer
 Absorption correction: ψ scan
 (North *et al.*, 1968)
 $T_{\min} = 0.935$, $T_{\max} = 0.952$
 2209 measured reflections
 1743 independent reflections
 1206 reflections with $I > 2\sigma(I)$
 $R_{\text{int}} = 0.019$
 2 standard reflections
 frequency: 60 min
 intensity decay: none

Refinement

$R[F^2 > 2\sigma(F^2)] = 0.057$
 $wR(F^2) = 0.180$
 $S = 1.08$
 1743 reflections
 137 parameters
 H-atom parameters constrained
 $\Delta\rho_{\max} = 0.36$ e Å⁻³
 $\Delta\rho_{\min} = -0.35$ e Å⁻³

Data collection: *CAD-4 EXPRESS* (Enraf-Nonius, 1994); cell refinement: *CAD-4 EXPRESS*; data reduction: *XCAD4* (Harms & Wocadlo, 1996); program(s) used to solve structure: *SHELXS97* (Sheldrick, 2008); program(s) used to refine structure: *SHELXL97* (Sheldrick, 2008); molecular graphics: *PLATON* (Spek, 2009); software used to prepare material for publication: *SHELXL97*.

SN thanks the DST for the FIST programme.

Supplementary data and figures for this paper are available from the IUCr electronic archives (Reference: AT2729).

References

- Enraf-Nonius (1994). *CAD-4 EXPRESS*. Enraf-Nonius, Delft, The Netherlands.
 Harms, K. & Wocadlo, S. (1996). *XCAD4*. University of Marburg, Germany.
 Jain, R., Singh, P. P., Jain, M., Sachdeva, S., Misra, V., Kaul, C. L., Kaur, S., Vaitilingam, B., Nayyar, A. & Bhaskar, P. P. (2005). Indian Patent Appl. IN 2002DE00628.
 North, A. C. T., Phillips, D. C. & Mathews, F. S. (1968). *Acta Cryst.* **A24**, 351–359.
 Sheldrick, G. M. (2008). *Acta Cryst.* **A64**, 112–122.
 Spek, A. L. (2009). *Acta Cryst.* **D65**, 148–155.

supplementary materials

Acta Cryst. (2009). E65, o671 [doi:10.1107/S1600536809007041]

4-Azido-2-chloro-6-methylquinoline

S. Natarajan, K. Rajesh, V. Vijayakumar, J. Suresh and P. L. N. Lakshman

Comment

Quinoline derivatives are a class of important materials as anti-tuberculosis agents (Jain *et al.*, 2005). In the title molecule (Fig. 1), all non-H atoms of the molecule, except atoms C11, C10, N2, N3 and N4 are coplanar within 0.0035 (10) Å. Due to 4-azido substitution within the pyridine ring: C2=C3 bond is longer and the C3—C4 bond is shorter than standard values for C=C (1.334 Å) and C_{sp^2} — C_{sp^2} (1.455 Å) bond lengths respectively. The dihedral angle between the C3/N2-N4 and C2/C1/N1/C5 rings is 6.16 (11)°.

There is a weak $\pi \cdots \pi$ interaction observed between the centres of N1/C1—C5 rings related through the symmetry operator $-x, 1-y, 1-z$, with centroids separation of 3.6456 (17) Å.

Experimental

A mixture of 2,4-dichloroquinoline (2.12 g, 10 mmol) and sodium azide (0.650 g, 10 mmol) in DMF (20 ml) was refluxed for 2 h. The progress of the reaction was monitored by TLC. After conforming that the reaction got completed, the reaction mixture was cooled and poured on to the crushed ice with stirring. The solid settled was filtered to dryness and purified over a column of silica gel (60–120 mesh; 50 g) eluting with Petroleum Ether–ethyl acetate (4.5:1.5) to give 4-azido-2-chloro-6-methylquinoline. The product was re-crystallized from 100% chloroform [mp: 429–430 K, yield: 20%].

Refinement

The H atoms were placed in calculated positions and allowed to ride on their carrier atoms with C—H = 0.93–0.96 Å and with $U_{iso} = 1.2U_{eq}(C)$ for CH and $U_{iso} = 1.5U_{eq}(C)$ for CH₃ groups.

Figures

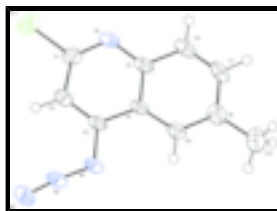


Fig. 1. The molecular structure of the title compound, showing 50% probability displacement ellipsoids and the atom-numbering scheme.

4-Azido-2-chloro-6-methylquinoline

Crystal data

C₁₀H₇ClN₄

Z = 2

supplementary materials

$M_r = 218.65$

Triclinic, $P\bar{1}$

Hall symbol: -P 1

$a = 6.9517$ (4) Å

$b = 7.6078$ (6) Å

$c = 10.0191$ (9) Å

$\alpha = 75.694$ (7)°

$\beta = 82.147$ (8)°

$\gamma = 76.532$ (7)°

$V = 497.57$ (7) Å³

$F_{000} = 224$

$D_x = 1.459$ Mg m⁻³

Mo $K\alpha$ radiation

$\lambda = 0.71073$ Å

Cell parameters from 25 reflections

$\theta = 2$ – 25°

$\mu = 0.35$ mm⁻¹

$T = 293$ K

Block, colourless

$0.19 \times 0.17 \times 0.14$ mm

Data collection

Nonius MACH-3
diffractometer

Radiation source: fine-focus sealed tube

Monochromator: graphite

$T = 293$ K

ω – 2θ scans

Absorption correction: ψ scan
(North *et al.*, 1968)

$T_{\min} = 0.935$, $T_{\max} = 0.952$

2209 measured reflections

1743 independent reflections

1206 reflections with $I > 2\sigma(I)$

$R_{\text{int}} = 0.019$

$\theta_{\max} = 25.0^\circ$

$\theta_{\min} = 2.1^\circ$

$h = -1 \rightarrow 8$

$k = -8 \rightarrow 9$

$l = -11 \rightarrow 11$

2 standard reflections

every 60 min

intensity decay: none

Refinement

Refinement on F^2

Least-squares matrix: full

$R[F^2 > 2\sigma(F^2)] = 0.057$

$wR(F^2) = 0.180$

$S = 1.08$

1743 reflections

137 parameters

Primary atom site location: structure-invariant direct
methods

Secondary atom site location: difference Fourier map

Hydrogen site location: inferred from neighbouring
sites

H-atom parameters constrained

$w = 1/[\sigma^2(F_o^2) + (0.1143P)^2 + 0.0878P]$

where $P = (F_o^2 + 2F_c^2)/3$

$(\Delta/\sigma)_{\max} < 0.001$

$\Delta\rho_{\max} = 0.36$ e Å⁻³

$\Delta\rho_{\min} = -0.35$ e Å⁻³

Extinction correction: none

Special details

Geometry. All e.s.d.'s (except the e.s.d. in the dihedral angle between two l.s. planes) are estimated using the full covariance matrix. The cell e.s.d.'s are taken into account individually in the estimation of e.s.d.'s in distances, angles and torsion angles; correlations between e.s.d.'s in cell parameters are only used when they are defined by crystal symmetry. An approximate (isotropic) treatment of cell e.s.d.'s is used for estimating e.s.d.'s involving l.s. planes.

Refinement. Refinement of F^2 against ALL reflections. The weighted R -factor wR and goodness of fit S are based on F^2 , conventional R -factors R are based on F , with F set to zero for negative F^2 . The threshold expression of $F^2 > \sigma(F^2)$ is used only for calculating R -factors(gt) *etc.* and is not relevant to the choice of reflections for refinement. R -factors based on F^2 are statistically about twice as large as those based on F , and R -factors based on ALL data will be even larger.

Fractional atomic coordinates and isotropic or equivalent isotropic displacement parameters (\AA^2)

	x	y	z	$U_{\text{iso}}^*/U_{\text{eq}}$
C1	0.1775 (5)	0.7084 (4)	0.2969 (3)	0.0365 (8)
C2	0.2459 (4)	0.5180 (3)	0.3035 (3)	0.0334 (7)
H2	0.2656	0.4702	0.2246	0.040*
C3	0.2820 (4)	0.4060 (3)	0.4303 (3)	0.0294 (7)
C4	0.2518 (4)	0.4825 (4)	0.5495 (3)	0.0291 (7)
C5	0.1836 (4)	0.6769 (4)	0.5274 (3)	0.0328 (7)
C6	0.1508 (5)	0.7579 (4)	0.6436 (3)	0.0432 (8)
H6	0.1047	0.8853	0.6320	0.052*
C7	0.1857 (5)	0.6525 (4)	0.7709 (3)	0.0448 (9)
H7	0.1636	0.7094	0.8454	0.054*
C8	0.2548 (5)	0.4583 (5)	0.7950 (3)	0.0407 (8)
C9	0.2849 (4)	0.3774 (4)	0.6839 (3)	0.0354 (7)
H9	0.3283	0.2495	0.6978	0.043*
C10	0.2945 (6)	0.3461 (6)	0.9386 (3)	0.0581 (10)
H10A	0.1764	0.3662	0.9996	0.087*
H10B	0.3994	0.3836	0.9706	0.087*
H10C	0.3331	0.2169	0.9371	0.087*
C11	0.13068 (16)	0.85050 (11)	0.13412 (9)	0.0604 (4)
N1	0.1475 (4)	0.7888 (3)	0.4003 (3)	0.0395 (7)
N2	0.3501 (4)	0.2108 (3)	0.4540 (3)	0.0396 (7)
N3	0.3912 (4)	0.1499 (3)	0.3461 (3)	0.0418 (7)
N4	0.4337 (5)	0.0798 (4)	0.2571 (3)	0.0614 (10)

Atomic displacement parameters (\AA^2)

	U^{11}	U^{22}	U^{33}	U^{12}	U^{13}	U^{23}
C1	0.0458 (19)	0.0243 (14)	0.0406 (16)	-0.0080 (13)	-0.0078 (14)	-0.0063 (12)
C2	0.0435 (19)	0.0236 (15)	0.0374 (16)	-0.0062 (13)	-0.0066 (14)	-0.0138 (12)
C3	0.0317 (16)	0.0202 (13)	0.0404 (16)	-0.0029 (12)	-0.0044 (13)	-0.0160 (12)
C4	0.0304 (16)	0.0214 (14)	0.0388 (16)	-0.0021 (11)	-0.0035 (12)	-0.0158 (12)
C5	0.0359 (18)	0.0227 (14)	0.0432 (16)	-0.0032 (12)	-0.0034 (13)	-0.0165 (12)
C6	0.055 (2)	0.0272 (16)	0.053 (2)	-0.0039 (14)	-0.0025 (16)	-0.0249 (14)
C7	0.056 (2)	0.0417 (18)	0.0452 (19)	-0.0095 (16)	0.0017 (16)	-0.0291 (15)
C8	0.044 (2)	0.0449 (18)	0.0385 (17)	-0.0112 (15)	-0.0041 (14)	-0.0171 (14)
C9	0.0400 (19)	0.0255 (14)	0.0426 (17)	-0.0018 (13)	-0.0064 (14)	-0.0139 (13)
C10	0.075 (3)	0.062 (2)	0.041 (2)	-0.013 (2)	-0.0078 (18)	-0.0161 (17)
C11	0.0950 (9)	0.0351 (5)	0.0482 (6)	-0.0092 (5)	-0.0201 (5)	-0.0002 (4)
N1	0.0535 (18)	0.0188 (12)	0.0460 (15)	-0.0010 (11)	-0.0058 (12)	-0.0121 (11)
N2	0.0572 (18)	0.0208 (12)	0.0413 (14)	0.0034 (12)	-0.0084 (12)	-0.0164 (11)

supplementary materials

N3	0.0582 (19)	0.0204 (12)	0.0487 (16)	-0.0013 (12)	-0.0104 (13)	-0.0146 (12)
N4	0.105 (3)	0.0314 (14)	0.0503 (17)	0.0002 (16)	-0.0140 (17)	-0.0239 (13)

Geometric parameters (Å, °)

C1—N1	1.298 (4)	C6—H6	0.9300
C1—C2	1.403 (4)	C7—C8	1.413 (4)
C1—C11	1.745 (3)	C7—H7	0.9300
C2—C3	1.362 (4)	C8—C9	1.371 (4)
C2—H2	0.9300	C8—C10	1.505 (5)
C3—N2	1.419 (3)	C9—H9	0.9300
C3—C4	1.424 (3)	C10—H10A	0.9600
C4—C9	1.404 (4)	C10—H10B	0.9600
C4—C5	1.415 (4)	C10—H10C	0.9600
C5—N1	1.364 (4)	N2—N3	1.251 (3)
C5—C6	1.416 (4)	N3—N4	1.121 (3)
C6—C7	1.348 (4)		
N1—C1—C2	126.1 (3)	C6—C7—C8	122.2 (3)
N1—C1—C11	117.0 (2)	C6—C7—H7	118.9
C2—C1—C11	116.9 (2)	C8—C7—H7	118.9
C3—C2—C1	117.2 (2)	C9—C8—C7	117.8 (3)
C3—C2—H2	121.4	C9—C8—C10	121.7 (3)
C1—C2—H2	121.4	C7—C8—C10	120.5 (3)
C2—C3—N2	124.0 (2)	C8—C9—C4	121.8 (3)
C2—C3—C4	120.3 (2)	C8—C9—H9	119.1
N2—C3—C4	115.7 (2)	C4—C9—H9	119.1
C9—C4—C5	119.6 (2)	C8—C10—H10A	109.5
C9—C4—C3	124.1 (2)	C8—C10—H10B	109.5
C5—C4—C3	116.3 (3)	H10A—C10—H10B	109.5
N1—C5—C4	123.2 (2)	C8—C10—H10C	109.5
N1—C5—C6	118.8 (2)	H10A—C10—H10C	109.5
C4—C5—C6	117.9 (3)	H10B—C10—H10C	109.5
C7—C6—C5	120.7 (3)	C1—N1—C5	116.7 (2)
C7—C6—H6	119.6	N3—N2—C3	114.1 (2)
C5—C6—H6	119.6	N4—N3—N2	173.6 (3)
N1—C1—C2—C3	0.9 (5)	C5—C6—C7—C8	-0.4 (5)
C11—C1—C2—C3	-179.7 (2)	C6—C7—C8—C9	-0.5 (5)
C1—C2—C3—N2	179.5 (3)	C6—C7—C8—C10	179.2 (3)
C1—C2—C3—C4	-0.4 (4)	C7—C8—C9—C4	1.0 (5)
C2—C3—C4—C9	179.8 (3)	C10—C8—C9—C4	-178.6 (3)
N2—C3—C4—C9	-0.1 (4)	C5—C4—C9—C8	-0.7 (4)
C2—C3—C4—C5	0.0 (4)	C3—C4—C9—C8	179.5 (3)
N2—C3—C4—C5	-179.9 (3)	C2—C1—N1—C5	-0.9 (5)
C9—C4—C5—N1	-179.9 (3)	C11—C1—N1—C5	179.7 (2)
C3—C4—C5—N1	0.0 (4)	C4—C5—N1—C1	0.4 (5)
C9—C4—C5—C6	-0.1 (4)	C6—C5—N1—C1	-179.3 (3)
C3—C4—C5—C6	179.7 (3)	C2—C3—N2—N3	5.8 (4)
N1—C5—C6—C7	-179.6 (3)	C4—C3—N2—N3	-174.3 (3)
C4—C5—C6—C7	0.7 (5)	C3—N2—N3—N4	176 (3)

Fig. 1

