

Acta Crystallographica Section E

## Structure Reports

Online

ISSN 1600-5368

## Tetramethyl 4,4'-carbonylbis(benzene-1,2-dicarboxylate)

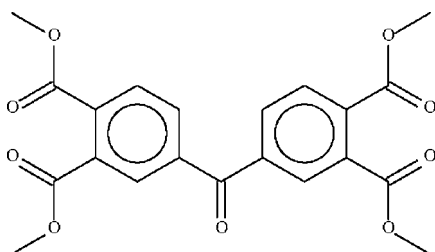
Xin-Yi Zhu,<sup>a</sup> Guo-Wei Gao,<sup>a</sup> Jian Men<sup>a</sup> and Seik Weng Ng<sup>b\*</sup><sup>a</sup>College of Chemistry, Sichuan University, Chengdu 610064, People's Republic of China, and <sup>b</sup>Department of Chemistry, University of Malaya, 50603 Kuala Lumpur, Malaysia

Correspondence e-mail: seikweng@um.edu.my

Received 11 March 2009; accepted 13 March 2009

Key indicators: single-crystal X-ray study;  $T = 123$  K; mean  $\sigma(\text{C}-\text{C}) = 0.002$  Å;  $R$  factor = 0.050;  $wR$  factor = 0.139; data-to-parameter ratio = 15.8.In the molecule of the title compound,  $\text{C}_{21}\text{H}_{18}\text{O}_9$ , the two aromatic rings are aligned at an angle of  $49.7(1)^\circ$ .

## Related literature

For the parent acid monohydrate, see: Fitzgerald & Gerkin (1997). For related literature, see: Zhang *et al.* (2004).

## Experimental

## Crystal data

$\text{C}_{21}\text{H}_{18}\text{O}_9$   
 $M_r = 414.35$   
 Monoclinic,  $P2_1/c$   
 $a = 11.8627(2)$  Å  
 $b = 17.3678(3)$  Å  
 $c = 9.2506(2)$  Å  
 $\beta = 95.150(1)^\circ$

$V = 1898.20(6)$  Å<sup>3</sup>  
 $Z = 4$   
 Mo  $K\alpha$  radiation  
 $\mu = 0.12$  mm<sup>-1</sup>  
 $T = 123$  K  
 $0.45 \times 0.15 \times 0.05$  mm

## Data collection

Bruker SMART APEX  
 diffractometer  
 Absorption correction: none  
 14279 measured reflections

4339 independent reflections  
 3596 reflections with  $I > 2\sigma(I)$   
 $R_{\text{int}} = 0.024$

## Refinement

$R[F^2 > 2\sigma(F^2)] = 0.050$   
 $wR(F^2) = 0.139$   
 $S = 1.04$   
 4339 reflections

275 parameters  
 H-atom parameters constrained  
 $\Delta\rho_{\text{max}} = 0.89$  e Å<sup>-3</sup>  
 $\Delta\rho_{\text{min}} = -0.50$  e Å<sup>-3</sup>

Data collection: *APEX2* (Bruker, 2008); cell refinement: *SAINTE* (Bruker, 2008); data reduction: *SAINTE*; program(s) used to solve structure: *SHELXS97* (Sheldrick, 2008); program(s) used to refine structure: *SHELXL97* (Sheldrick, 2008); molecular graphics: *X-SEED* (Barbour, 2001); software used to prepare material for publication: *pubCIF* (Westrip, 2009).

The authors thank the Undergraduates Innovative Experiment Project, the Experimental Technical Project of Sichuan University (grant No. 07-54) and the University of Malaya for supporting this study.

Supplementary data and figures for this paper are available from the IUCr electronic archives (Reference: TK2392).

## References

- Barbour, L. J. (2001). *J. Supramol. Chem.* **1**, 189–191.  
 Bruker (2008). *APEX2* and *SAINTE*. Bruker AXS Inc., Madison, Wisconsin, USA.  
 Fitzgerald, L. J. & Gerkin, R. E. (1997). *Acta Cryst.* **C53**, 1267–1270.  
 Sheldrick, G. M. (2008). *Acta Cryst.* **A64**, 112–122.  
 Westrip, S. P. (2009). *pubCIF*. In preparation.  
 Zhang, J., Li, Z.-J., Kang, Y., Cheng, J.-K. & Yao, Y.-G. (2004). *Inorg. Chem.* **43**, 8085–8091.

**supplementary materials**

*Acta Cryst.* (2009). E65, o794 [ doi:10.1107/S1600536809009271 ]

## Tetramethyl 4,4'-carbonylbis(benzene-1,2-dicarboxylate)

X.-Y. Zhu, G.-W. Gao, J. Men and S. W. Ng

### Comment

(type here to add)

### Experimental

3,3',4,4'-Tetracarboxybenzophenone (29.4 g, 0.1 mol) and *p*-toluenesulfonic acid (2.0 g, 0.01 mol) were heated in a mixture of toluene (100 ml) and methanol (50 ml) in a Dean-Stark apparatus for 20 h. Water (500 ml) was added to the mixture, the organic phase was separated and washed with saturated sodium carbonate. The toluene was removed and the product purified from ethanol to afford a white powder (34.7 g, 90% yield; m.p. 382–384 K). Colorless single crystals were obtained by recrystallization from toluene.

### Refinement

Carbon-bound H-atoms were placed in calculated positions (C—H 0.95 to 0.98 Å) and were included in the refinement in the riding model approximation, with  $U(\text{H})$  set to 1.2 to 1.5 $U(\text{C})$ .

### Figures

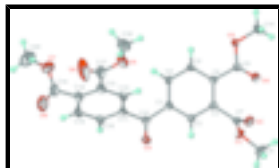


Fig. 1. Thermal ellipsoid plot (Barbour, 2001) of  $\text{C}_{21}\text{H}_{18}\text{O}_9$  at the 70% probability level; hydrogen atoms are drawn as spheres of arbitrary radius.

## Tetramethyl 4,4'-carbonylbis(benzene-1,2-dicarboxylate)

### Crystal data

$\text{C}_{21}\text{H}_{18}\text{O}_9$

$M_r = 414.35$

Monoclinic,  $P2_1/c$

Hall symbol: -P 2ybc

$a = 11.8627(2) \text{ \AA}$

$b = 17.3678(3) \text{ \AA}$

$c = 9.2506(2) \text{ \AA}$

$\beta = 95.150(1)^\circ$

$V = 1898.20(6) \text{ \AA}^3$

$F_{000} = 864$

$D_x = 1.450 \text{ Mg m}^{-3}$

Mo  $K\alpha$  radiation

$\lambda = 0.71073 \text{ \AA}$

Cell parameters from 5155 reflections

$\theta = 2.9\text{--}28.2^\circ$

$\mu = 0.12 \text{ mm}^{-1}$

$T = 123 \text{ K}$

Block, colorless

$0.45 \times 0.15 \times 0.05 \text{ mm}$

# supplementary materials

---

Z = 4

## Data collection

Bruker SMART APEX [APEXII?] diffractometer	3596 reflections with $I > 2\sigma(I)$
Radiation source: fine-focus sealed tube	$R_{\text{int}} = 0.024$
Monochromator: graphite	$\theta_{\text{max}} = 27.5^\circ$
$T = 123$ K	$\theta_{\text{min}} = 1.7^\circ$
$\omega$ scans	$h = -15 \rightarrow 15$
Absorption correction: none	$k = -22 \rightarrow 22$
14279 measured reflections	$l = -11 \rightarrow 12$
4339 independent reflections	

## Refinement

Refinement on $F^2$	Secondary atom site location: difference Fourier map
Least-squares matrix: full	Hydrogen site location: inferred from neighbouring sites
$R[F^2 > 2\sigma(F^2)] = 0.050$	H-atom parameters constrained
$wR(F^2) = 0.139$	$w = 1/[\sigma^2(F_o^2) + (0.0704P)^2 + 1.4144P]$
$S = 1.04$	where $P = (F_o^2 + 2F_c^2)/3$
4339 reflections	$(\Delta/\sigma)_{\text{max}} = 0.001$
275 parameters	$\Delta\rho_{\text{max}} = 0.89 \text{ e } \text{\AA}^{-3}$
Primary atom site location: structure-invariant direct methods	$\Delta\rho_{\text{min}} = -0.50 \text{ e } \text{\AA}^{-3}$
	Extinction correction: none

## Fractional atomic coordinates and isotropic or equivalent isotropic displacement parameters ( $\text{\AA}^2$ )

	x	y	z	$U_{\text{iso}}^*/U_{\text{eq}}$
O1	0.82828 (10)	0.56029 (7)	0.93784 (12)	0.0205 (3)
O2	1.01037 (11)	0.56968 (8)	0.88890 (13)	0.0261 (3)
O3	0.89532 (11)	0.62457 (7)	0.42114 (13)	0.0227 (3)
O4	0.87735 (13)	0.65645 (7)	0.65258 (14)	0.0288 (3)
O5	0.47658 (11)	0.33391 (8)	0.30590 (16)	0.0310 (3)
O6	0.38426 (16)	0.22311 (10)	0.2777 (3)	0.0726 (7)
O7	0.50941 (16)	0.09165 (11)	0.19849 (17)	0.0525 (5)
O8	0.42373 (14)	0.05561 (10)	0.38926 (19)	0.0458 (4)
O9	0.85745 (11)	0.25995 (7)	0.79479 (13)	0.0236 (3)
C1	0.82935 (13)	0.36953 (9)	0.64550 (17)	0.0163 (3)
C2	0.85873 (13)	0.42065 (9)	0.75874 (17)	0.0165 (3)
H2	0.8650	0.4026	0.8561	0.020*
C3	0.87895 (13)	0.49763 (9)	0.73051 (17)	0.0160 (3)
C4	0.87127 (13)	0.52414 (9)	0.58682 (17)	0.0158 (3)
C5	0.84754 (14)	0.47205 (9)	0.47349 (17)	0.0180 (3)
H5	0.8463	0.4892	0.3759	0.022*
C6	0.82574 (14)	0.39516 (9)	0.50221 (17)	0.0177 (3)

H6	0.8084	0.3602	0.4245	0.021*
C7	0.91496 (14)	0.54819 (9)	0.85827 (17)	0.0173 (3)
C8	0.85333 (17)	0.60385 (11)	1.07015 (19)	0.0262 (4)
H8A	0.7826	0.6222	1.1053	0.039*
H8B	0.9012	0.6480	1.0508	0.039*
H8C	0.8932	0.5709	1.1440	0.039*
C9	0.88242 (14)	0.60863 (9)	0.55979 (17)	0.0170 (3)
C10	0.90221 (18)	0.70612 (10)	0.3881 (2)	0.0280 (4)
H10A	0.8282	0.7302	0.3952	0.042*
H10B	0.9246	0.7126	0.2894	0.042*
H10C	0.9585	0.7306	0.4573	0.042*
C11	0.72742 (14)	0.23959 (9)	0.59007 (17)	0.0168 (3)
C12	0.63715 (14)	0.27188 (9)	0.50347 (18)	0.0187 (3)
H12	0.6268	0.3261	0.5024	0.022*
C13	0.56220 (14)	0.22528 (10)	0.41868 (19)	0.0210 (4)
C14	0.57621 (15)	0.14533 (10)	0.42228 (19)	0.0220 (4)
C15	0.66549 (15)	0.11274 (10)	0.50977 (19)	0.0223 (4)
H15	0.6748	0.0584	0.5127	0.027*
C16	0.74083 (14)	0.15960 (9)	0.59265 (18)	0.0189 (3)
H16	0.8019	0.1372	0.6515	0.023*
C17	0.46489 (16)	0.25921 (11)	0.3262 (2)	0.0287 (4)
C18	0.38474 (18)	0.37057 (13)	0.2166 (2)	0.0354 (5)
H18A	0.3787	0.3477	0.1194	0.053*
H18B	0.4001	0.4258	0.2094	0.053*
H18C	0.3136	0.3629	0.2609	0.053*
C19	0.49327 (17)	0.09303 (11)	0.3372 (2)	0.0300 (4)
C20	0.4158 (3)	0.0543 (2)	0.1117 (3)	0.0687 (9)
H20A	0.4090	0.0008	0.1436	0.103*
H20B	0.4303	0.0552	0.0091	0.103*
H20C	0.3452	0.0819	0.1242	0.103*
C21	0.80855 (14)	0.28732 (9)	0.68492 (17)	0.0172 (3)

Atomic displacement parameters ( $\text{\AA}^2$ )

	$U^{11}$	$U^{22}$	$U^{33}$	$U^{12}$	$U^{13}$	$U^{23}$
O1	0.0222 (6)	0.0240 (6)	0.0151 (5)	0.0013 (5)	-0.0003 (4)	-0.0048 (5)
O2	0.0248 (7)	0.0309 (7)	0.0223 (6)	-0.0094 (5)	0.0005 (5)	-0.0043 (5)
O3	0.0370 (7)	0.0143 (6)	0.0168 (6)	-0.0020 (5)	0.0027 (5)	0.0017 (4)
O4	0.0485 (9)	0.0173 (6)	0.0217 (6)	-0.0032 (6)	0.0094 (6)	-0.0037 (5)
O5	0.0251 (7)	0.0254 (7)	0.0403 (8)	0.0007 (5)	-0.0099 (6)	0.0103 (6)
O6	0.0480 (11)	0.0316 (9)	0.1273 (19)	-0.0056 (8)	-0.0526 (12)	0.0061 (10)
O7	0.0661 (12)	0.0602 (11)	0.0298 (8)	-0.0355 (9)	-0.0036 (8)	-0.0023 (7)
O8	0.0378 (9)	0.0433 (9)	0.0561 (10)	-0.0220 (7)	0.0039 (7)	-0.0106 (8)
O9	0.0298 (7)	0.0194 (6)	0.0205 (6)	-0.0013 (5)	-0.0032 (5)	0.0045 (5)
C1	0.0158 (7)	0.0157 (7)	0.0171 (7)	0.0003 (6)	0.0003 (6)	0.0000 (6)
C2	0.0172 (8)	0.0178 (8)	0.0141 (7)	-0.0019 (6)	-0.0004 (6)	0.0013 (6)
C3	0.0149 (7)	0.0177 (8)	0.0154 (7)	-0.0014 (6)	0.0007 (6)	-0.0014 (6)
C4	0.0158 (7)	0.0157 (7)	0.0160 (7)	-0.0004 (6)	0.0010 (6)	0.0004 (6)

## supplementary materials

---

C5	0.0222 (8)	0.0180 (8)	0.0137 (7)	-0.0007 (6)	0.0016 (6)	0.0014 (6)
C6	0.0215 (8)	0.0164 (8)	0.0150 (7)	-0.0006 (6)	0.0001 (6)	-0.0030 (6)
C7	0.0215 (8)	0.0159 (7)	0.0140 (7)	-0.0020 (6)	-0.0006 (6)	0.0018 (6)
C8	0.0336 (10)	0.0275 (9)	0.0173 (8)	0.0032 (7)	-0.0001 (7)	-0.0071 (7)
C9	0.0172 (8)	0.0167 (7)	0.0169 (7)	-0.0003 (6)	0.0007 (6)	0.0001 (6)
C10	0.0433 (11)	0.0146 (8)	0.0260 (9)	-0.0018 (7)	0.0029 (8)	0.0046 (7)
C11	0.0185 (8)	0.0154 (7)	0.0168 (8)	-0.0009 (6)	0.0033 (6)	-0.0005 (6)
C12	0.0186 (8)	0.0145 (7)	0.0231 (8)	0.0004 (6)	0.0032 (6)	0.0013 (6)
C13	0.0186 (8)	0.0186 (8)	0.0257 (9)	-0.0006 (6)	0.0018 (7)	0.0018 (6)
C14	0.0203 (8)	0.0187 (8)	0.0270 (9)	-0.0035 (6)	0.0013 (7)	-0.0009 (7)
C15	0.0260 (9)	0.0142 (8)	0.0266 (9)	-0.0009 (6)	0.0028 (7)	-0.0003 (6)
C16	0.0208 (8)	0.0163 (8)	0.0197 (8)	0.0010 (6)	0.0021 (6)	0.0027 (6)
C17	0.0234 (9)	0.0232 (9)	0.0377 (11)	0.0000 (7)	-0.0063 (8)	0.0000 (8)
C18	0.0290 (10)	0.0345 (11)	0.0404 (11)	0.0064 (8)	-0.0097 (9)	0.0107 (9)
C19	0.0344 (11)	0.0194 (9)	0.0345 (10)	-0.0007 (7)	-0.0072 (8)	-0.0004 (8)
C20	0.076 (2)	0.084 (2)	0.0432 (15)	-0.0364 (17)	-0.0131 (14)	-0.0089 (14)
C21	0.0191 (8)	0.0162 (8)	0.0164 (7)	0.0001 (6)	0.0031 (6)	0.0006 (6)

### *Geometric parameters (Å, °)*

O1—C7	1.334 (2)	C8—H8A	0.9800
O1—C8	1.447 (2)	C8—H8B	0.9800
O2—C7	1.201 (2)	C8—H8C	0.9800
O3—C9	1.334 (2)	C10—H10A	0.9800
O3—C10	1.453 (2)	C10—H10B	0.9800
O4—C9	1.200 (2)	C10—H10C	0.9800
O5—C17	1.320 (2)	C11—C16	1.398 (2)
O5—C18	1.454 (2)	C11—C12	1.396 (2)
O6—C17	1.197 (2)	C11—C21	1.494 (2)
O7—C19	1.315 (3)	C12—C13	1.391 (2)
O7—C20	1.463 (3)	C12—H12	0.9500
O8—C19	1.186 (3)	C13—C14	1.399 (2)
O9—C21	1.220 (2)	C13—C17	1.495 (2)
C1—C2	1.393 (2)	C14—C15	1.394 (2)
C1—C6	1.395 (2)	C14—C19	1.508 (2)
C1—C21	1.500 (2)	C15—C16	1.388 (2)
C2—C3	1.387 (2)	C15—H15	0.9500
C2—H2	0.9500	C16—H16	0.9500
C3—C4	1.402 (2)	C18—H18A	0.9800
C3—C7	1.503 (2)	C18—H18B	0.9800
C4—C5	1.394 (2)	C18—H18C	0.9800
C4—C9	1.496 (2)	C20—H20A	0.9800
C5—C6	1.390 (2)	C20—H20B	0.9800
C5—H5	0.9500	C20—H20C	0.9800
C6—H6	0.9500		
C7—O1—C8	116.05 (14)	C16—C11—C12	119.28 (15)
C9—O3—C10	114.72 (13)	C16—C11—C21	118.36 (15)
C17—O5—C18	115.37 (15)	C12—C11—C21	122.33 (14)
C19—O7—C20	111.96 (19)	C13—C12—C11	120.56 (15)

C2—C1—C6	119.69 (15)	C13—C12—H12	119.7
C2—C1—C21	117.35 (14)	C11—C12—H12	119.7
C6—C1—C21	122.89 (14)	C12—C13—C14	119.71 (16)
C3—C2—C1	120.55 (14)	C12—C13—C17	121.00 (15)
C3—C2—H2	119.7	C14—C13—C17	119.28 (16)
C1—C2—H2	119.7	C15—C14—C13	119.97 (16)
C2—C3—C4	119.83 (14)	C15—C14—C19	118.98 (15)
C2—C3—C7	117.18 (14)	C13—C14—C19	121.01 (16)
C4—C3—C7	122.91 (14)	C16—C15—C14	120.04 (15)
C5—C4—C3	119.43 (14)	C16—C15—H15	120.0
C5—C4—C9	121.71 (14)	C14—C15—H15	120.0
C3—C4—C9	118.77 (14)	C15—C16—C11	120.44 (15)
C6—C5—C4	120.53 (14)	C15—C16—H16	119.8
C6—C5—H5	119.7	C11—C16—H16	119.8
C4—C5—H5	119.7	O6—C17—O5	123.51 (18)
C5—C6—C1	119.84 (14)	O6—C17—C13	123.94 (18)
C5—C6—H6	120.1	O5—C17—C13	112.54 (15)
C1—C6—H6	120.1	O5—C18—H18A	109.5
O2—C7—O1	125.28 (15)	O5—C18—H18B	109.5
O2—C7—C3	124.21 (15)	H18A—C18—H18B	109.5
O1—C7—C3	110.31 (13)	O5—C18—H18C	109.5
O1—C8—H8A	109.5	H18A—C18—H18C	109.5
O1—C8—H8B	109.5	H18B—C18—H18C	109.5
H8A—C8—H8B	109.5	O8—C19—O7	123.63 (19)
O1—C8—H8C	109.5	O8—C19—C14	124.31 (19)
H8A—C8—H8C	109.5	O7—C19—C14	112.02 (17)
H8B—C8—H8C	109.5	O7—C20—H20A	109.5
O4—C9—O3	124.16 (15)	O7—C20—H20B	109.5
O4—C9—C4	123.26 (15)	H20A—C20—H20B	109.5
O3—C9—C4	112.55 (13)	O7—C20—H20C	109.5
O3—C10—H10A	109.5	H20A—C20—H20C	109.5
O3—C10—H10B	109.5	H20B—C20—H20C	109.5
H10A—C10—H10B	109.5	O9—C21—C11	120.40 (14)
O3—C10—H10C	109.5	O9—C21—C1	119.80 (15)
H10A—C10—H10C	109.5	C11—C21—C1	119.80 (13)
H10B—C10—H10C	109.5		
C6—C1—C2—C3	3.2 (2)	C12—C13—C14—C15	-0.5 (3)
C21—C1—C2—C3	-179.84 (14)	C17—C13—C14—C15	-178.97 (17)
C1—C2—C3—C4	-0.8 (2)	C12—C13—C14—C19	177.06 (17)
C1—C2—C3—C7	-177.49 (15)	C17—C13—C14—C19	-1.4 (3)
C2—C3—C4—C5	-2.4 (2)	C13—C14—C15—C16	-0.4 (3)
C7—C3—C4—C5	174.02 (15)	C19—C14—C15—C16	-177.95 (17)
C2—C3—C4—C9	174.17 (14)	C14—C15—C16—C11	0.5 (3)
C7—C3—C4—C9	-9.4 (2)	C12—C11—C16—C15	0.2 (2)
C3—C4—C5—C6	3.4 (2)	C21—C11—C16—C15	178.04 (15)
C9—C4—C5—C6	-173.13 (15)	C18—O5—C17—O6	-1.2 (3)
C4—C5—C6—C1	-1.0 (2)	C18—O5—C17—C13	179.94 (17)
C2—C1—C6—C5	-2.3 (2)	C12—C13—C17—O6	-162.3 (2)
C21—C1—C6—C5	-179.05 (15)	C14—C13—C17—O6	16.2 (3)

## supplementary materials

---

C8—O1—C7—O2	0.9 (2)	C12—C13—C17—O5	16.6 (3)
C8—O1—C7—C3	175.88 (13)	C14—C13—C17—O5	-164.95 (17)
C2—C3—C7—O2	103.63 (19)	C20—O7—C19—O8	14.0 (3)
C4—C3—C7—O2	-72.9 (2)	C20—O7—C19—C14	-168.1 (2)
C2—C3—C7—O1	-71.44 (18)	C15—C14—C19—O8	73.0 (3)
C4—C3—C7—O1	112.03 (17)	C13—C14—C19—O8	-104.6 (2)
C10—O3—C9—O4	-0.5 (2)	C15—C14—C19—O7	-104.9 (2)
C10—O3—C9—C4	177.76 (14)	C13—C14—C19—O7	77.6 (2)
C5—C4—C9—O4	162.70 (17)	C16—C11—C21—O9	-25.3 (2)
C3—C4—C9—O4	-13.8 (2)	C12—C11—C21—O9	152.50 (16)
C5—C4—C9—O3	-15.5 (2)	C16—C11—C21—C1	155.19 (15)
C3—C4—C9—O3	167.94 (14)	C12—C11—C21—C1	-27.0 (2)
C16—C11—C12—C13	-1.0 (2)	C2—C1—C21—O9	-29.0 (2)
C21—C11—C12—C13	-178.79 (15)	C6—C1—C21—O9	147.90 (17)
C11—C12—C13—C14	1.2 (3)	C2—C1—C21—C11	150.56 (15)
C11—C12—C13—C17	179.64 (16)	C6—C1—C21—C11	-32.6 (2)

Fig. 1

