

Acta Crystallographica Section E

Structure Reports

Online

ISSN 1600-5368

N'-[2-[2-(3-Methoxyphenyl)ethenyl]-phenyl]acetamide

Kartini Ahmad, Noel F. Thomas, Mohd Azlan Nafiah,
Khalijah Awang and Seik Weng Ng*

Department of Chemistry, University of Malaya, 50603 Kuala Lumpur, Malaysia
Correspondence e-mail: seikweng@um.edu.my

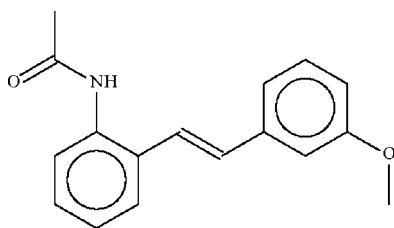
Received 5 May 2009; accepted 8 May 2009

Key indicators: single-crystal X-ray study; $T = 100$ K; mean $\sigma(\text{C}-\text{C}) = 0.003$ Å;
 R factor = 0.052; wR factor = 0.140; data-to-parameter ratio = 17.3.

In the title compound, $\text{C}_{17}\text{H}_{17}\text{NO}_2$, the phenylene rings are bent with respect to the carbon–carbon double bond [dihedral angle between rings = $39.6(1)^\circ$]. The acetamido group is twisted out of the plane of the aromatic ring [dihedral angle = $44.2(1)^\circ$] in order to form an $\text{N}-\text{H}\cdots\text{O}$ hydrogen bond to the acetamido group of an adjacent molecule, generating a zigzag chain running along the c axis.

Related literature

The compound was synthesized in a study on indolostilbenes; see: Ahmad *et al.* (2009).



Experimental

Crystal data

$\text{C}_{17}\text{H}_{17}\text{NO}_2$
 $M_r = 267.32$
Monoclinic, $P2_1/c$
 $a = 14.5588(5)$ Å
 $b = 10.3633(4)$ Å
 $c = 9.3667(3)$ Å
 $\beta = 90.118(1)^\circ$
 $V = 1413.22(9)$ Å³
 $Z = 4$
Mo $K\alpha$ radiation
 $\mu = 0.08$ mm⁻¹
 $T = 100$ K
 $0.21 \times 0.07 \times 0.02$ mm

Data collection

Bruker SMART APEX
diffractometer
Absorption correction: none
12919 measured reflections
3236 independent reflections
2036 reflections with $I > 2\sigma(I)$
 $R_{\text{int}} = 0.069$

Refinement

$R[F^2 > 2\sigma(F^2)] = 0.052$
 $wR(F^2) = 0.140$
 $S = 1.01$
3236 reflections
187 parameters
1 restraint
H atoms treated by a mixture of independent and constrained refinement
 $\Delta\rho_{\text{max}} = 0.38$ e Å⁻³
 $\Delta\rho_{\text{min}} = -0.25$ e Å⁻³

Table 1

Hydrogen-bond geometry (Å, °).

$D-\text{H}\cdots A$	$D-\text{H}$	$\text{H}\cdots A$	$D\cdots A$	$D-\text{H}\cdots A$
$\text{N1}-\text{H1}\cdots\text{O1}^i$	0.88 (1)	1.93 (1)	2.804 (2)	175 (2)

Symmetry code: (i) $x, -y + \frac{3}{2}, z - \frac{1}{2}$.

Data collection: *APEX2* software (Bruker, 2008); cell refinement: *SAINT* (Bruker, 2008); data reduction: *SAINT*; program(s) used to solve structure: *SHELXS97* (Sheldrick, 2008); program(s) used to refine structure: *SHELXL97* (Sheldrick, 2008); molecular graphics: *X-SEED* (Barbour, 2001); software used to prepare material for publication: *pubCIF* (Westrip, 2009).

We thank the University of Malaya for supporting this study.

Supplementary data and figures for this paper are available from the IUCr electronic archives (Reference: HG2514).

References

- Ahmad, K., Thomas, N. F., Mukhtar, M. R., Noorbachta, I., Faizal, W., Nafiah, J.-F., Azlan, M., Velu, S. S., Takeya, K., Morita, H., Lim, C.-G., Hadi, A. H. A. & Awang, K. (2009). *Tetrahedron*, **65**, 1504–1516.
Barbour, L. J. (2001). *J. Supramol. Chem.* **1**, 189–191.
Bruker (2008). *APEX2* and *SAINT*. Bruker AXS Inc., Madison, Wisconsin, USA.
Sheldrick, G. M. (2008). *Acta Cryst.* **A64**, 112–122.
Westrip, S. P. (2009). *pubCIF*. In preparation.

supporting information

Acta Cryst. (2009). E65, o1290 [doi:10.1107/S1600536809017401]

***N'*-{2-[2-(3-Methoxyphenyl)ethenyl]phenyl}acetamide**

Kartini Ahmad, Noel F. Thomas, Mohd Azlan Nafiah, Khalijah Awang and Seik Weng Ng

S1. Experimental

The compound was synthesized in a study on indolostilbenes (Ahmad *et al.*, 2009). Crystals were grown from its solution in ethyl acetate.

S2. Refinement

Hydrogen atoms were placed at calculated positions (C–H 0.95–0.98 Å) and were treated as riding on their parent carbon atoms, with $U(H)$ set to 1.2–1.5 times $U_{eq}(C)$. The amino H-atom was located in a difference Fourier map, and was refined with a distance restraint of N–H 0.88±0.01 Å; its temperature factor was refined.

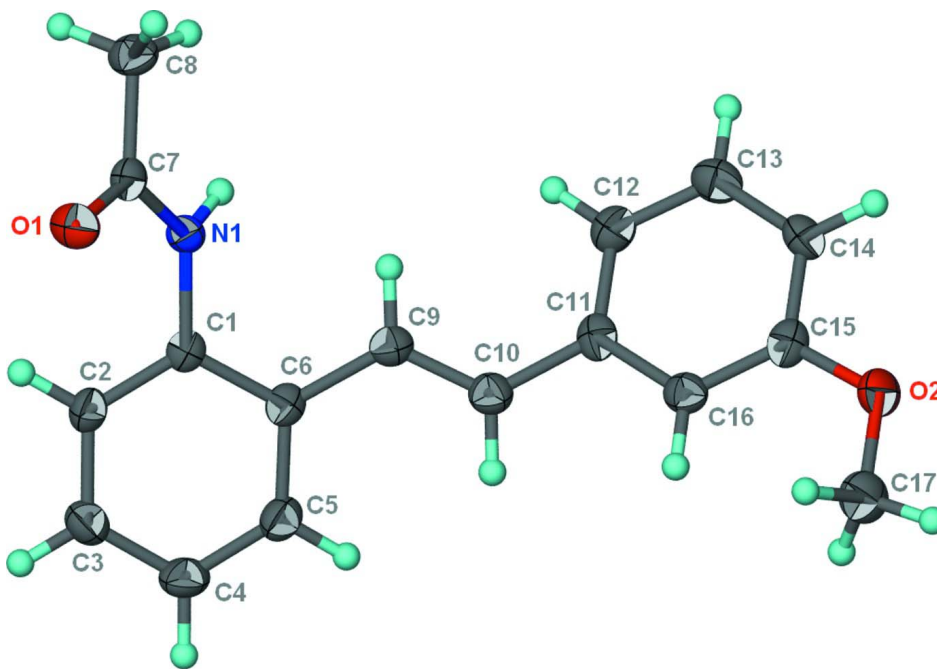


Figure 1

Thermal ellipsoid plot (Barbour, 2001) of $C_{17}H_{17}NO_2$ at the 70% probability level. Hydrogen atoms are drawn as spheres of arbitrary radius.

N'*-{2-[2-(3-Methoxyphenyl)ethenyl]phenyl}acetamideCrystal data*

$C_{17}H_{17}NO_2$
 $M_r = 267.32$

Monoclinic, $P2_1/c$
Hall symbol: -P 2ybc

$a = 14.5588$ (5) Å
 $b = 10.3633$ (4) Å
 $c = 9.3667$ (3) Å
 $\beta = 90.118$ (1)°
 $V = 1413.22$ (9) Å³
 $Z = 4$
 $F(000) = 568$
 $D_x = 1.256$ Mg m⁻³

Mo $K\alpha$ radiation, $\lambda = 0.71073$ Å
 Cell parameters from 1682 reflections
 $\theta = 2.4$ – 27.7 °
 $\mu = 0.08$ mm⁻¹
 $T = 100$ K
 Plate, colorless
 $0.21 \times 0.07 \times 0.02$ mm

Data collection

Bruker SMART APEX
 diffractometer
 Radiation source: fine-focus sealed tube
 Graphite monochromator
 ω scans
 12919 measured reflections
 3236 independent reflections

2036 reflections with $I > 2\sigma(I)$
 $R_{\text{int}} = 0.069$
 $\theta_{\text{max}} = 27.5$ °, $\theta_{\text{min}} = 1.4$ °
 $h = -18 \rightarrow 18$
 $k = -13 \rightarrow 13$
 $l = -12 \rightarrow 12$

Refinement

Refinement on F^2
 Least-squares matrix: full
 $R[F^2 > 2\sigma(F^2)] = 0.052$
 $wR(F^2) = 0.140$
 $S = 1.01$
 3236 reflections
 187 parameters
 1 restraint
 Primary atom site location: structure-invariant
 direct methods

Secondary atom site location: difference Fourier
 map
 Hydrogen site location: inferred from
 neighbouring sites
 H atoms treated by a mixture of independent
 and constrained refinement
 $w = 1/[\sigma^2(F_o^2) + (0.0657P)^2 + 0.3754P]$
 where $P = (F_o^2 + 2F_c^2)/3$
 $(\Delta/\sigma)_{\text{max}} = 0.001$
 $\Delta\rho_{\text{max}} = 0.38$ e Å⁻³
 $\Delta\rho_{\text{min}} = -0.25$ e Å⁻³

Fractional atomic coordinates and isotropic or equivalent isotropic displacement parameters (Å²)

	<i>x</i>	<i>y</i>	<i>z</i>	$U_{\text{iso}}^*/U_{\text{eq}}$
O1	0.11400 (10)	0.71029 (14)	0.73510 (14)	0.0246 (4)
O2	0.65965 (10)	0.58338 (15)	0.10659 (16)	0.0273 (4)
N1	0.12402 (11)	0.66372 (17)	0.49961 (17)	0.0177 (4)
H1	0.1185 (16)	0.699 (2)	0.4151 (15)	0.032 (7)*
C1	0.14037 (13)	0.5285 (2)	0.5123 (2)	0.0172 (4)
C2	0.08867 (14)	0.4550 (2)	0.6068 (2)	0.0204 (5)
H2	0.0432	0.4955	0.6639	0.024*
C3	0.10283 (14)	0.3241 (2)	0.6183 (2)	0.0243 (5)
H3	0.0686	0.2749	0.6853	0.029*
C4	0.16751 (15)	0.2639 (2)	0.5315 (2)	0.0269 (5)
H4	0.1771	0.1734	0.5382	0.032*
C5	0.21760 (14)	0.3364 (2)	0.4357 (2)	0.0236 (5)
H5	0.2601	0.2941	0.3746	0.028*
C6	0.20754 (13)	0.4707 (2)	0.4259 (2)	0.0185 (4)
C7	0.10934 (13)	0.7448 (2)	0.6095 (2)	0.0187 (4)
C8	0.08548 (16)	0.8812 (2)	0.5694 (2)	0.0257 (5)
H8A	0.1255	0.9410	0.6216	0.038*
H8B	0.0213	0.8985	0.5941	0.038*

H8C	0.0941	0.8931	0.4665	0.038*
C9	0.26855 (14)	0.5474 (2)	0.3343 (2)	0.0208 (5)
H9	0.2507	0.6338	0.3145	0.025*
C10	0.34701 (14)	0.5057 (2)	0.2767 (2)	0.0222 (5)
H10	0.3623	0.4177	0.2919	0.027*
C11	0.41182 (14)	0.5822 (2)	0.1925 (2)	0.0206 (5)
C12	0.38525 (15)	0.6915 (2)	0.1148 (2)	0.0242 (5)
H12	0.3230	0.7191	0.1156	0.029*
C13	0.45036 (16)	0.7595 (2)	0.0361 (2)	0.0261 (5)
H13	0.4322	0.8334	-0.0168	0.031*
C14	0.54070 (15)	0.7208 (2)	0.0343 (2)	0.0223 (5)
H14	0.5844	0.7671	-0.0208	0.027*
C15	0.56799 (14)	0.6138 (2)	0.1129 (2)	0.0218 (5)
C16	0.50366 (14)	0.5444 (2)	0.1902 (2)	0.0212 (5)
H16	0.5224	0.4701	0.2421	0.025*
C17	0.69172 (16)	0.4821 (2)	0.1966 (2)	0.0302 (5)
H17A	0.7586	0.4749	0.1882	0.045*
H17B	0.6631	0.4005	0.1677	0.045*
H17C	0.6755	0.5012	0.2959	0.045*

Atomic displacement parameters (Å²)

	U^{11}	U^{22}	U^{33}	U^{12}	U^{13}	U^{23}
O1	0.0362 (9)	0.0232 (8)	0.0144 (7)	0.0009 (7)	0.0007 (6)	-0.0012 (6)
O2	0.0182 (8)	0.0272 (9)	0.0366 (9)	-0.0019 (6)	0.0023 (6)	0.0044 (7)
N1	0.0207 (9)	0.0181 (9)	0.0144 (8)	0.0017 (7)	0.0011 (7)	0.0019 (7)
C1	0.0157 (10)	0.0204 (11)	0.0156 (9)	0.0000 (8)	-0.0024 (8)	-0.0020 (8)
C2	0.0162 (10)	0.0245 (11)	0.0203 (10)	0.0016 (9)	0.0011 (8)	0.0000 (9)
C3	0.0232 (12)	0.0231 (12)	0.0266 (11)	-0.0028 (9)	0.0005 (9)	0.0043 (9)
C4	0.0252 (12)	0.0170 (11)	0.0387 (13)	-0.0006 (9)	-0.0006 (10)	-0.0002 (10)
C5	0.0186 (11)	0.0227 (12)	0.0296 (11)	0.0013 (9)	0.0017 (9)	-0.0028 (10)
C6	0.0150 (10)	0.0210 (11)	0.0195 (10)	-0.0009 (8)	-0.0022 (8)	-0.0026 (9)
C7	0.0150 (10)	0.0214 (11)	0.0196 (10)	-0.0007 (8)	0.0010 (8)	-0.0007 (8)
C8	0.0349 (13)	0.0208 (12)	0.0213 (10)	0.0048 (9)	0.0023 (9)	-0.0014 (9)
C9	0.0212 (11)	0.0190 (11)	0.0220 (10)	0.0008 (9)	-0.0011 (8)	-0.0008 (9)
C10	0.0247 (12)	0.0197 (11)	0.0222 (10)	0.0001 (9)	0.0010 (9)	-0.0009 (9)
C11	0.0225 (11)	0.0233 (11)	0.0160 (9)	-0.0030 (9)	0.0018 (8)	-0.0051 (9)
C12	0.0220 (11)	0.0268 (12)	0.0238 (11)	0.0020 (9)	-0.0007 (9)	-0.0017 (10)
C13	0.0313 (13)	0.0237 (12)	0.0234 (11)	-0.0005 (10)	-0.0024 (9)	0.0028 (9)
C14	0.0241 (12)	0.0215 (11)	0.0213 (10)	-0.0055 (9)	0.0013 (8)	0.0016 (9)
C15	0.0182 (11)	0.0254 (12)	0.0218 (10)	-0.0016 (9)	-0.0005 (8)	-0.0055 (9)
C16	0.0238 (11)	0.0194 (11)	0.0203 (10)	0.0004 (9)	-0.0001 (8)	-0.0007 (9)
C17	0.0205 (12)	0.0338 (14)	0.0361 (13)	-0.0009 (10)	-0.0031 (10)	0.0052 (11)

Geometric parameters (Å, °)

O1—C7	1.231 (2)	C8—H8B	0.9800
O2—C15	1.373 (2)	C8—H8C	0.9800

O2—C17	1.424 (3)	C9—C10	1.336 (3)
N1—C7	1.346 (3)	C9—H9	0.9500
N1—C1	1.426 (3)	C10—C11	1.464 (3)
N1—H1	0.877 (10)	C10—H10	0.9500
C1—C2	1.391 (3)	C11—C16	1.394 (3)
C1—C6	1.405 (3)	C11—C12	1.400 (3)
C2—C3	1.376 (3)	C12—C13	1.393 (3)
C2—H2	0.9500	C12—H12	0.9500
C3—C4	1.393 (3)	C13—C14	1.375 (3)
C3—H3	0.9500	C13—H13	0.9500
C4—C5	1.380 (3)	C14—C15	1.388 (3)
C4—H4	0.9500	C14—H14	0.9500
C5—C6	1.402 (3)	C15—C16	1.386 (3)
C5—H5	0.9500	C16—H16	0.9500
C6—C9	1.470 (3)	C17—H17A	0.9800
C7—C8	1.504 (3)	C17—H17B	0.9800
C8—H8A	0.9800	C17—H17C	0.9800
C15—O2—C17	117.48 (17)	C10—C9—C6	125.4 (2)
C7—N1—C1	125.17 (17)	C10—C9—H9	117.3
C7—N1—H1	114.4 (16)	C6—C9—H9	117.3
C1—N1—H1	120.2 (16)	C9—C10—C11	126.5 (2)
C2—C1—C6	120.73 (19)	C9—C10—H10	116.7
C2—C1—N1	120.06 (18)	C11—C10—H10	116.7
C6—C1—N1	119.19 (18)	C16—C11—C12	118.93 (19)
C3—C2—C1	120.6 (2)	C16—C11—C10	118.36 (19)
C3—C2—H2	119.7	C12—C11—C10	122.71 (19)
C1—C2—H2	119.7	C13—C12—C11	119.8 (2)
C2—C3—C4	119.8 (2)	C13—C12—H12	120.1
C2—C3—H3	120.1	C11—C12—H12	120.1
C4—C3—H3	120.1	C14—C13—C12	120.7 (2)
C5—C4—C3	119.6 (2)	C14—C13—H13	119.6
C5—C4—H4	120.2	C12—C13—H13	119.6
C3—C4—H4	120.2	C13—C14—C15	119.9 (2)
C4—C5—C6	121.8 (2)	C13—C14—H14	120.0
C4—C5—H5	119.1	C15—C14—H14	120.0
C6—C5—H5	119.1	O2—C15—C16	124.12 (19)
C5—C6—C1	117.31 (19)	O2—C15—C14	115.96 (18)
C5—C6—C9	120.78 (19)	C16—C15—C14	119.9 (2)
C1—C6—C9	121.83 (19)	C15—C16—C11	120.7 (2)
O1—C7—N1	122.77 (19)	C15—C16—H16	119.6
O1—C7—C8	121.59 (18)	C11—C16—H16	119.6
N1—C7—C8	115.64 (17)	O2—C17—H17A	109.5
C7—C8—H8A	109.5	O2—C17—H17B	109.5
C7—C8—H8B	109.5	H17A—C17—H17B	109.5
H8A—C8—H8B	109.5	O2—C17—H17C	109.5
C7—C8—H8C	109.5	H17A—C17—H17C	109.5
H8A—C8—H8C	109.5	H17B—C17—H17C	109.5

H8B—C8—H8C	109.5		
C7—N1—C1—C2	42.6 (3)	C1—C6—C9—C10	162.9 (2)
C7—N1—C1—C6	-138.9 (2)	C6—C9—C10—C11	-175.99 (18)
C6—C1—C2—C3	0.5 (3)	C9—C10—C11—C16	154.0 (2)
N1—C1—C2—C3	178.97 (18)	C9—C10—C11—C12	-25.9 (3)
C1—C2—C3—C4	-2.0 (3)	C16—C11—C12—C13	0.5 (3)
C2—C3—C4—C5	0.7 (3)	C10—C11—C12—C13	-179.63 (19)
C3—C4—C5—C6	2.1 (3)	C11—C12—C13—C14	-0.2 (3)
C4—C5—C6—C1	-3.5 (3)	C12—C13—C14—C15	-0.9 (3)
C4—C5—C6—C9	173.33 (19)	C17—O2—C15—C16	-6.6 (3)
C2—C1—C6—C5	2.2 (3)	C17—O2—C15—C14	174.07 (18)
N1—C1—C6—C5	-176.28 (18)	C13—C14—C15—O2	-179.00 (19)
C2—C1—C6—C9	-174.62 (18)	C13—C14—C15—C16	1.7 (3)
N1—C1—C6—C9	6.9 (3)	O2—C15—C16—C11	179.34 (19)
C1—N1—C7—O1	4.4 (3)	C14—C15—C16—C11	-1.4 (3)
C1—N1—C7—C8	-174.86 (18)	C12—C11—C16—C15	0.3 (3)
C5—C6—C9—C10	-13.8 (3)	C10—C11—C16—C15	-179.58 (18)

Hydrogen-bond geometry (Å, °)

<i>D—H...A</i>	<i>D—H</i>	<i>H...A</i>	<i>D...A</i>	<i>D—H...A</i>
N1—H1...O1 ⁱ	0.88 (1)	1.93 (1)	2.804 (2)	175 (2)

Symmetry code: (i) *x*, $-y+3/2$, $z-1/2$.