

Acta Crystallographica Section E

## Structure Reports

Online

ISSN 1600-5368

# [(2,3,5,6- $\eta$ )-Bicyclo[2.2.1]hepta-2,5-diene]dibromidopalladium(II)

Nam-Ho Kim and Kwang Ha\*

 School of Applied Chemical Engineering, the Research Institute of Catalysis, Chonnam National University, Gwangju 500-757, Republic of Korea  
 Correspondence e-mail: hakwang@chonnam.ac.kr

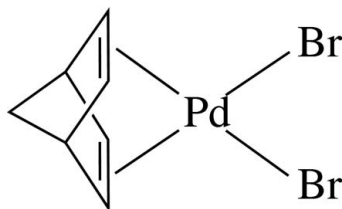
Received 28 May 2009; accepted 30 May 2009

 Key indicators: single-crystal X-ray study;  $T = 296$  K; mean  $\sigma(\text{C}-\text{C}) = 0.008$  Å;  $R$  factor = 0.026;  $wR$  factor = 0.071; data-to-parameter ratio = 18.2.

In the title complex,  $[\text{PdBr}_2(\text{C}_7\text{H}_8)]$ , the  $\text{Pd}^{\text{II}}$  ion lies in a distorted square-planar environment defined by the two Br atoms and the mid-points of the two  $\pi$ -coordinated double bonds of bicyclo[2.2.1]hepta-2,5-diene. The complex is disposed about a crystallographic mirror plane parallel to the  $ac$  plane passing through the Pd, Br atoms and the centre of the diene ligand.

## Related literature

For the preparation of  $[\text{PdX}_2(\text{nbd})]$  ( $X = \text{Cl}$  or  $\text{Br}$ ; nbd = norbornadiene), see: Alexander *et al.* (1960). For the crystal structure of  $[\text{PdCl}_2(\text{nbd})]$ , see: Baenziger *et al.* (1965). For the gas electron diffraction structure of norbornadiene, see: Yokozeki & Kuchitsu (1971).



## Experimental

## Crystal data

$[\text{PdBr}_2(\text{C}_7\text{H}_8)]$	$V = 854.6(2) \text{ \AA}^3$
$M_r = 358.35$	$Z = 4$
Orthorhombic, $Pnma$	Mo $K\alpha$ radiation
$a = 12.758(2) \text{ \AA}$	$\mu = 11.44 \text{ mm}^{-1}$
$b = 7.4313(11) \text{ \AA}$	$T = 296 \text{ K}$
$c = 9.0138(14) \text{ \AA}$	$0.22 \times 0.20 \times 0.15 \text{ mm}$

## Data collection

Bruker SMART 1000 CCD diffractometer	5210 measured reflections
Absorption correction: multi-scan (SADABS; Bruker, 2000)	944 independent reflections
$T_{\text{min}} = 0.126$ , $T_{\text{max}} = 0.180$	673 reflections with $I > 2\sigma(I)$
	$R_{\text{int}} = 0.042$

## Refinement

$R[F^2 > 2\sigma(F^2)] = 0.026$	52 parameters
$wR(F^2) = 0.071$	H-atom parameters constrained
$S = 0.99$	$\Delta\rho_{\text{max}} = 1.10 \text{ e \AA}^{-3}$
944 reflections	$\Delta\rho_{\text{min}} = -1.79 \text{ e \AA}^{-3}$

Data collection: SMART (Bruker, 2000); cell refinement: SAINT (Bruker, 2000); data reduction: SAINT; program(s) used to solve structure: SHELXS97 (Sheldrick, 2008); program(s) used to refine structure: SHELXL97 (Sheldrick, 2008); molecular graphics: PLATON (Spek, 2009); software used to prepare material for publication: SHELXL97.

This work was supported by a Korea Research Foundation Grant funded by the Korean Government (MOEHRD) (KRF-2007-412-J02001).

Supplementary data and figures for this paper are available from the IUCr electronic archives (Reference: EZZ2172).

## References

- Alexander, R. A., Baenziger, N. C., Carpenter, C. & Doyle, J. R. (1960). *J. Am. Chem. Soc.* **82**, 535–538.  
 Baenziger, N. C., Richards, G. F. & Doyle, J. R. (1965). *Acta Cryst.* **18**, 924–926.  
 Bruker (2000). SADABS, SMART and SAINT. Bruker AXS Inc., Madison, Wisconsin, USA.  
 Sheldrick, G. M. (2008). *Acta Cryst.* **A64**, 112–122.  
 Spek, A. L. (2009). *Acta Cryst.* **D65**, 148–155.  
 Yokozeki, A. & Kuchitsu, K. (1971). *Bull. Chem. Soc. Jpn.* **44**, 2356–2363.

**supplementary materials**

*Acta Cryst.* (2009). E65, m727 [ doi:10.1107/S1600536809020583 ]

## [(2,3,5,6-*M*)-Bicyclo[2.2.1]hepta-2,5-diene]dibromidopalladium(II)

N.-H. Kim and K. Ha

### Comment

The title complex, [PdBr<sub>2</sub>(C<sub>7</sub>H<sub>8</sub>)], is isomorphous with the analogous Pd(II) complex [PdCl<sub>2</sub>(C<sub>7</sub>H<sub>8</sub>)] (Baenziger *et al.*, 1965). In the complex, the central Pd<sup>II</sup> ion is essentially in a square-planar environment defined by the two Br atoms and the two midpoints (M1, M2) of the  $\pi$ -coordinated double bonds of the bicyclo[2.2.1]hepta-2,5-diene (norbornadiene; nbd) ligand [M1 and M2 denote the midpoints of the olefinic bonds C1—C1a and C2—C2a, respectively; symmetry code: (a)  $x, 1/2 - y, z$ ] (Fig. 1). The complex is disposed about a crystallographic mirror plane parallel to the *ac* plane passing through the Pd atom, the Br atoms and the centre of the ligand with the special positions ( $x, 1/4, z$ ) (Fig. 2). The pairs of Pd—Br and Pd—C bond lengths are almost equal (Pd—Br: 2.4258 (11) and 2.4294 (10) Å; Pd—C: 2.165 (5) and 2.170 (5) Å). The nbd ligand coordinates symmetrically to the Pd atom, and displays a slight increase in the double-bond distances (1.389 (10) and 1.388 (10) Å) compared with the non-coordinating double bonds of nbd in the gas phase (1.343 (3) Å; Yokozeki & Kuchitsu, 1971).

### Experimental

To a solution of (bicyclo[2.2.1]hepta-2,5-diene)dichloridopalladium(II) (0.200 g, 0.742 mmol) in EtOH (20 ml) was added NaBr (0.816 g, 7.931 mmol), and refluxed for 1 h. The formed precipitate was separated by filtration and washed with EtOH and water and dried under vacuum, to give an orange powder (0.053 g). Crystals suitable for X-ray analysis were obtained by slow evaporation from a CH<sub>3</sub>CN solution.

### Refinement

H atoms were positioned geometrically and allowed to ride on their respective parent atoms [C—H = 0.98 (CH) or 0.97 Å (CH<sub>2</sub>) and  $U_{\text{iso}}(\text{H}) = 1.2U_{\text{eq}}(\text{C})$ ].

### Figures

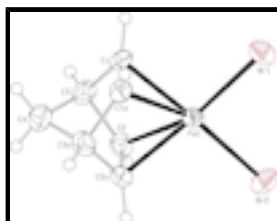


Fig. 1. The structure of the title complex, with displacement ellipsoids drawn at the 40% probability level for non-H atoms [Symmetry code: (a)  $x, 1/2 - y, z$ ].

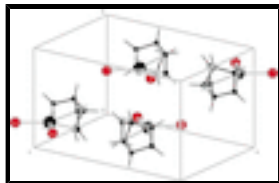


Fig. 2. View of the unit-cell contents of the title complex.

## [(2,3,5,6- $\eta$ )-Bicyclo[2.2.1]hepta-2,5-diene]dibromidopalladium(II)

### Crystal data

[PdBr <sub>2</sub> (C <sub>7</sub> H <sub>8</sub> )]	$F_{000} = 664$
$M_r = 358.35$	$D_x = 2.785 \text{ Mg m}^{-3}$
Orthorhombic, $Pnma$	Mo $K\alpha$ radiation
Hall symbol: -P 2ac 2n	$\lambda = 0.71073 \text{ \AA}$
$a = 12.758 (2) \text{ \AA}$	Cell parameters from 2031 reflections
$b = 7.4313 (11) \text{ \AA}$	$\theta = 2.7\text{--}27.9^\circ$
$c = 9.0138 (14) \text{ \AA}$	$\mu = 11.44 \text{ mm}^{-1}$
$V = 854.6 (2) \text{ \AA}^3$	$T = 296 \text{ K}$
$Z = 4$	Block, orange
	$0.22 \times 0.20 \times 0.15 \text{ mm}$

### Data collection

Bruker SMART 1000 CCD diffractometer	944 independent reflections
Radiation source: fine-focus sealed tube	673 reflections with $I > 2\sigma(I)$
Monochromator: graphite	$R_{\text{int}} = 0.042$
$T = 296 \text{ K}$	$\theta_{\text{max}} = 26.4^\circ$
$\varphi$ and $\omega$ scans	$\theta_{\text{min}} = 2.8^\circ$
Absorption correction: Multi-scan (SADABS; Bruker, 2000)	$h = -14 \rightarrow 15$
$T_{\text{min}} = 0.126$ , $T_{\text{max}} = 0.180$	$k = -8 \rightarrow 9$
5210 measured reflections	$l = -11 \rightarrow 6$

### Refinement

Refinement on $F^2$	Secondary atom site location: difference Fourier map
Least-squares matrix: full	Hydrogen site location: inferred from neighbouring sites
$R[F^2 > 2\sigma(F^2)] = 0.026$	H-atom parameters constrained
$wR(F^2) = 0.071$	$w = 1/[\sigma^2(F_o^2) + (0.0331P)^2]$
$S = 0.99$	where $P = (F_o^2 + 2F_c^2)/3$
944 reflections	$(\Delta/\sigma)_{\text{max}} < 0.001$
52 parameters	$\Delta\rho_{\text{max}} = 1.10 \text{ e \AA}^{-3}$
Primary atom site location: structure-invariant direct methods	$\Delta\rho_{\text{min}} = -1.79 \text{ e \AA}^{-3}$
	Extinction correction: none

*Special details*

**Geometry.** All e.s.d.'s (except the e.s.d. in the dihedral angle between two l.s. planes) are estimated using the full covariance matrix. The cell e.s.d.'s are taken into account individually in the estimation of e.s.d.'s in distances, angles and torsion angles; correlations between e.s.d.'s in cell parameters are only used when they are defined by crystal symmetry. An approximate (isotropic) treatment of cell e.s.d.'s is used for estimating e.s.d.'s involving l.s. planes.

**Refinement.** Refinement of  $F^2$  against ALL reflections. The weighted  $R$ -factor  $wR$  and goodness of fit  $S$  are based on  $F^2$ , conventional  $R$ -factors  $R$  are based on  $F$ , with  $F$  set to zero for negative  $F^2$ . The threshold expression of  $F^2 > \sigma(F^2)$  is used only for calculating  $R$ -factors(gt) *etc.* and is not relevant to the choice of reflections for refinement.  $R$ -factors based on  $F^2$  are statistically about twice as large as those based on  $F$ , and  $R$ -factors based on ALL data will be even larger.

*Fractional atomic coordinates and isotropic or equivalent isotropic displacement parameters ( $\text{\AA}^2$ )*

	<i>x</i>	<i>y</i>	<i>z</i>	$U_{\text{iso}}^*/U_{\text{eq}}$
Pd1	0.06852 (4)	0.2500	0.92135 (7)	0.0312 (2)
Br1	0.19165 (7)	0.2500	1.12643 (11)	0.0462 (3)
Br2	-0.08564 (6)	0.2500	1.07957 (11)	0.0491 (3)
C1	0.1765 (4)	0.1566 (7)	0.7528 (6)	0.0363 (14)
H1	0.2388	0.0844	0.7752	0.044*
C2	-0.0067 (4)	0.1566 (7)	0.7196 (6)	0.0380 (14)
H2	-0.0709	0.0844	0.7192	0.046*
C3	0.0934 (4)	0.0997 (8)	0.6402 (7)	0.0419 (15)
H3	0.0967	-0.0241	0.6031	0.050*
C4	0.1048 (6)	0.2500	0.5270 (11)	0.052 (2)
H4A	0.1727	0.2500	0.4786	0.063*
H4B	0.0492	0.2500	0.4536	0.063*

*Atomic displacement parameters ( $\text{\AA}^2$ )*

	$U^{11}$	$U^{22}$	$U^{33}$	$U^{12}$	$U^{13}$	$U^{23}$
Pd1	0.0263 (3)	0.0349 (4)	0.0325 (4)	0.000	0.0009 (3)	0.000
Br1	0.0491 (5)	0.0448 (5)	0.0448 (6)	0.000	-0.0147 (4)	0.000
Br2	0.0430 (5)	0.0488 (6)	0.0556 (7)	0.000	0.0181 (4)	0.000
C1	0.025 (2)	0.046 (3)	0.038 (4)	0.007 (2)	0.006 (2)	-0.005 (3)
C2	0.032 (3)	0.048 (3)	0.034 (3)	-0.006 (2)	-0.007 (3)	-0.002 (3)
C3	0.043 (3)	0.040 (3)	0.042 (4)	0.003 (3)	0.002 (3)	-0.013 (3)
C4	0.043 (5)	0.073 (7)	0.040 (6)	0.000	0.005 (4)	0.000

*Geometric parameters ( $\text{\AA}$ ,  $^\circ$ )*

Pd1—C1 <sup>i</sup>	2.165 (5)	C2—C2 <sup>i</sup>	1.388 (10)
Pd1—C1	2.165 (5)	C2—C3	1.523 (7)
Pd1—C2 <sup>i</sup>	2.170 (5)	C2—H2	0.9800
Pd1—C2	2.170 (5)	C3—C4	1.520 (9)
Pd1—Br1	2.4258 (11)	C3—H3	0.9800
Pd1—Br2	2.4294 (10)	C4—C3 <sup>i</sup>	1.520 (9)

## supplementary materials

---

C1—C1 <sup>i</sup>	1.389 (10)	C4—H4A	0.9700
C1—C3	1.527 (7)	C4—H4B	0.9700
C1—H1	0.9800		
C1 <sup>i</sup> —Pd1—C1	37.4 (3)	Pd1—C1—H1	123.2
C1 <sup>i</sup> —Pd1—C2 <sup>i</sup>	65.8 (2)	C2 <sup>i</sup> —C2—C3	106.1 (3)
C1—Pd1—C2 <sup>i</sup>	78.2 (2)	C2 <sup>i</sup> —C2—Pd1	71.35 (14)
C1 <sup>i</sup> —Pd1—C2	78.2 (2)	C3—C2—Pd1	96.4 (3)
C1—Pd1—C2	65.8 (2)	C2 <sup>i</sup> —C2—H2	123.2
C2 <sup>i</sup> —Pd1—C2	37.3 (3)	C3—C2—H2	123.2
C1 <sup>i</sup> —Pd1—Br1	97.05 (14)	Pd1—C2—H2	123.2
C1—Pd1—Br1	97.05 (14)	C4—C3—C2	101.0 (5)
C2 <sup>i</sup> —Pd1—Br1	157.65 (14)	C4—C3—C1	100.2 (5)
C2—Pd1—Br1	157.65 (14)	C2—C3—C1	101.1 (4)
C1 <sup>i</sup> —Pd1—Br2	157.97 (13)	C4—C3—H3	117.2
C1—Pd1—Br2	157.97 (13)	C2—C3—H3	117.2
C2 <sup>i</sup> —Pd1—Br2	97.71 (14)	C1—C3—H3	117.2
C2—Pd1—Br2	97.71 (14)	C3 <sup>i</sup> —C4—C3	94.6 (7)
Br1—Pd1—Br2	94.41 (4)	C3 <sup>i</sup> —C4—H4A	112.8
C1 <sup>i</sup> —C1—C3	106.1 (3)	C3—C4—H4A	112.8
C1 <sup>i</sup> —C1—Pd1	71.29 (13)	C3 <sup>i</sup> —C4—H4B	112.8
C3—C1—Pd1	96.5 (3)	C3—C4—H4B	112.8
C1 <sup>i</sup> —C1—H1	123.2	H4A—C4—H4B	110.3
C3—C1—H1	123.2		
C2 <sup>i</sup> —Pd1—C1—C1 <sup>i</sup>	65.45 (15)	C2 <sup>i</sup> —Pd1—C2—C3	104.9 (3)
C2—Pd1—C1—C1 <sup>i</sup>	102.59 (16)	Br1—Pd1—C2—C3	-40.3 (6)
Br2—Pd1—C1—C1 <sup>i</sup>	146.8 (4)	Br2—Pd1—C2—C3	-162.5 (3)
C1 <sup>i</sup> —Pd1—C1—C3	-104.8 (3)	C2 <sup>i</sup> —C2—C3—C4	-33.3 (5)
C2 <sup>i</sup> —Pd1—C1—C3	-39.3 (3)	Pd1—C2—C3—C4	-105.7 (4)
C2—Pd1—C1—C3	-2.2 (3)	C2 <sup>i</sup> —C2—C3—C1	69.5 (4)
Br1—Pd1—C1—C3	162.8 (3)	Pd1—C2—C3—C1	-2.9 (4)
Br2—Pd1—C1—C3	42.0 (6)	C1 <sup>i</sup> —C1—C3—C4	34.0 (4)
C1 <sup>i</sup> —Pd1—C2—C2 <sup>i</sup>	-65.40 (15)	Pd1—C1—C3—C4	106.4 (4)
C1—Pd1—C2—C2 <sup>i</sup>	-102.69 (16)	C1 <sup>i</sup> —C1—C3—C2	-69.5 (4)
Br1—Pd1—C2—C2 <sup>i</sup>	-145.2 (4)	Pd1—C1—C3—C2	2.9 (4)
C1 <sup>i</sup> —Pd1—C2—C3	39.5 (3)	C2—C3—C4—C3 <sup>i</sup>	51.1 (6)
C1—Pd1—C2—C3	2.2 (3)	C1—C3—C4—C3 <sup>i</sup>	-52.5 (6)

Symmetry codes: (i)  $x, -y+1/2, z$ .

Fig. 1

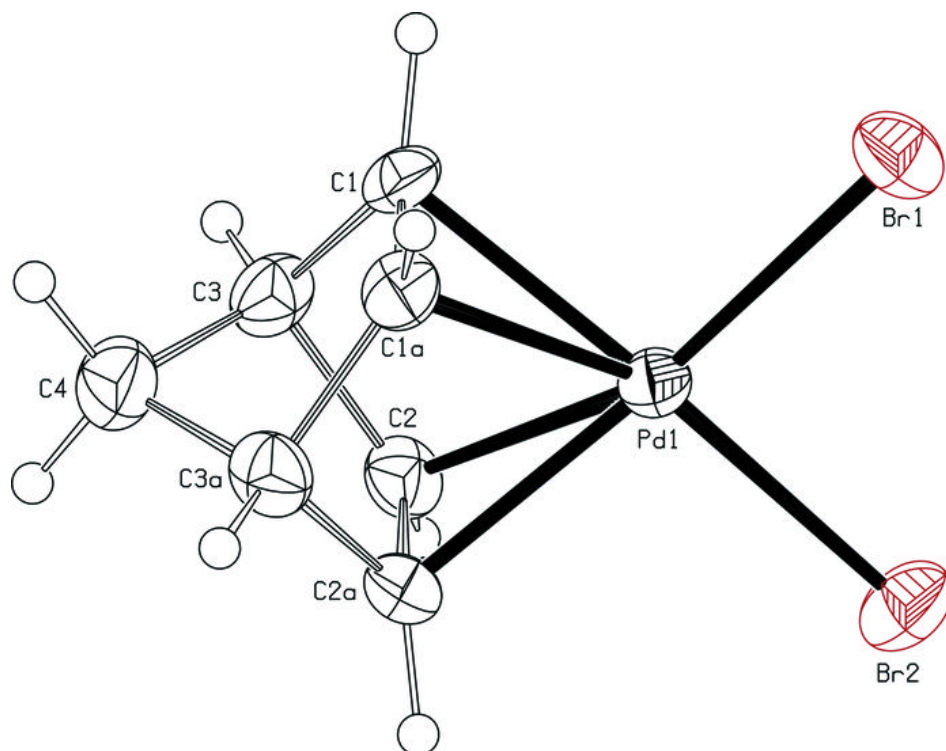


Fig. 2

