

Acta Crystallographica Section E

Structure Reports

Online

ISSN 1600-5368

(Z,Z)-N''-[Amino(pyrazin-2-yl)methylene]pyrazine-2-carbohydrazonamide

Ya-Wen Zhang, Jian-Quan Wang and Lin Cheng*

School of Chemistry and Chemical Engineering, Southeast University, Nanjing 211189, People's Republic of China

Correspondence e-mail: cep02chl@yahoo.com.cn

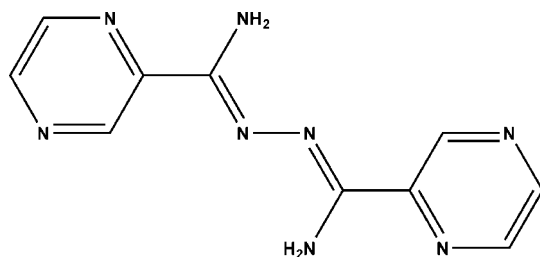
Received 15 July 2009; accepted 15 July 2009

 Key indicators: single-crystal X-ray study; $T = 295$ K; mean $\sigma(\text{C}-\text{C}) = 0.002$ Å; R factor = 0.038; wR factor = 0.108; data-to-parameter ratio = 10.5.

The title compound, $\text{C}_{10}\text{H}_{10}\text{N}_8$, resides on a crystallographic symmetry center and features an essentially planar molecule [r.m.s. deviation = 0.278 (1) Å]. In the $\text{C}=\text{N}-\text{N}=\text{C}$ fragment, the $\text{C}=\text{N}$ distance is 1.3017 (18) Å and the $\text{N}-\text{N}$ distance is 1.403 (2) Å. In the crystal, adjacent molecules are linked by $\text{N}-\text{H}\cdots\text{N}$ hydrogen bonds into a three-dimensional network.

Related literature

For related structures, see: Armstrong *et al.* (1998), Xu *et al.* (2006), Shi *et al.* (2008).



Experimental

Crystal data

$\text{C}_{10}\text{H}_{10}\text{N}_8$
 $M_r = 242.26$
 Monoclinic, $P2_1/c$

$a = 8.6576$ (16) Å
 $b = 6.6685$ (12) Å
 $c = 9.6162$ (18) Å

$\beta = 97.682$ (4)°
 $V = 550.19$ (18) Å³
 $Z = 2$
 Mo $K\alpha$ radiation

$\mu = 0.10$ mm⁻¹
 $T = 295$ K
 $0.30 \times 0.19 \times 0.16$ mm

Data collection

Bruker SMART CCD diffractometer
 Absorption correction: multi-scan (SADABS; Sheldrick, 2000)
 $T_{\min} = 0.970$, $T_{\max} = 0.984$

1946 measured reflections
 946 independent reflections
 844 reflections with $I > 2\sigma(I)$
 $R_{\text{int}} = 0.013$

Refinement

$R[F^2 > 2\sigma(F^2)] = 0.038$
 $wR(F^2) = 0.108$
 $S = 1.05$
 946 reflections
 90 parameters

H atoms treated by a mixture of independent and constrained refinement
 $\Delta\rho_{\text{max}} = 0.20$ e Å⁻³
 $\Delta\rho_{\text{min}} = -0.13$ e Å⁻³

Table 1
 Hydrogen-bond geometry (Å, °).

$D-H\cdots A$	$D-H$	$H\cdots A$	$D\cdots A$	$D-H\cdots A$
$\text{N3}-\text{H3B}\cdots\text{N2}^i$	0.906 (18)	2.280 (18)	3.0539 (18)	143.2 (14)
$\text{N3}-\text{H3C}\cdots\text{N4}^{ii}$	0.892 (19)	2.405 (18)	3.1587 (18)	142.3 (16)

Symmetry codes: (i) $-x + 2, y - \frac{1}{2}, -z + \frac{1}{2}$; (ii) $x, -y - \frac{1}{2}, z + \frac{1}{2}$.

Data collection: SMART (Bruker, 2000); cell refinement: SAINT (Bruker, 2000); data reduction: SAINT; program(s) used to solve structure: SHELXS97 (Sheldrick, 2008); program(s) used to refine structure: SHELXL97 (Sheldrick, 2008); molecular graphics: SHELXTL (Sheldrick, 2008); software used to prepare material for publication: SHELXL97.

The authors thank the Program for Young Excellent Talents in Southeast University for financial support.

Supplementary data and figures for this paper are available from the IUCr electronic archives (Reference: BT5007).

References

- Armstrong, J. A., Barnes, J. C. & Weakley, T. J. R. (1998). *Acta Cryst.* **C54**, 1923–1925.
 Bruker (2000). SMART and SAINT. Bruker AXS Inc., Madison, Wisconsin, USA.
 Sheldrick, G. M. (2000). SADABS. University of Göttingen, Germany.
 Sheldrick, G. M. (2008). *Acta Cryst.* **A64**, 112–122.
 Shi, S., Yao, T., Geng, X., Cheng, L. & Ji, L. (2008). *Acta Cryst.* **E64**, o272.
 Xu, R.-H., Zhou, J., Xu, Y., Qi, L., Shen, X. & Zhu, D.-R. (2006). *Acta Cryst.* **E62**, o5234–o5235.

supporting information

Acta Cryst. (2009). E65, o1941 [doi:10.1107/S1600536809027834]

(*Z,Z*)-*N''*'-[Amino(pyrazin-2-yl)methylene]pyrazine-2-carbohydrazonamide

Ya-Wen Zhang, Jian-Quan Wang and Lin Cheng

S1. Comment

The title compound can be regarded as a dihydrazidine with all atoms essentially coplanar and has now been shown to have *trans* geometry because of steric repulsion effect. In the C=N—N=C fragment, the C=N distance is 1.302 (2) Å, which is much shorter than the N—N distance of 1.403 (2) Å. All other C—N distances are 1.341 (2) Å, which are considered to have full double-bond character. Adjacent molecules are linked into a two-dimensional sheet by intermolecular N—H···N hydrogen bonds with the N···N distance of 3.054 (2) Å. Each molecule acts as double hydrogen-bond acceptors with the 2-positon N atoms of pyrazine rings and donors with the two amino groups.

S2. Experimental

A mixture of pyrazine-2-carbonitrile (0.210 g, 2 mmol), MnSO₄·H₂O (0.169 g, 1 mmol), hydrazine hydrate (80%, 2 ml) and anhydrous ethanol (6 ml) was heated in a 15 ml Teflon-lined autoclave at 393 K for 3 days, followed by slow cooling (5 K h⁻¹) to room temperature. The resulting mixture was filtered and washed with 95% ethanol, and yellow block crystals were collected and dried in vacuum. Yield (0.32 g) 26.4%.

S3. Refinement

The H atom bonded to N were located in a difference map and freely refined. Other H atoms were positioned geometrically and refined using a riding model with C—H = 0.93 Å and with $U_{\text{iso}}(\text{H}) = 1.2 U_{\text{eq}}(\text{C})$.

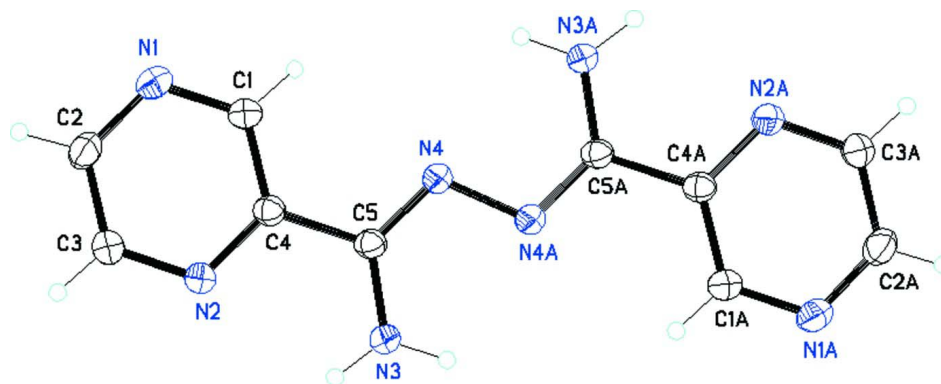


Figure 1

Structure of the title compound with 30% displacement ellipsoids. [Symmetry code: (A) 2-x, -1-y, -z.]

(Z,Z)-N''-[Amino(pyrazin-2-yl)methylene]pyrazine-2-carbohydrazonamide*Crystal data*C₁₀H₁₀N₈ $M_r = 242.26$ Monoclinic, $P2_1/c$

Hall symbol: -P 2ybc

 $a = 8.6576$ (16) Å $b = 6.6685$ (12) Å $c = 9.6162$ (18) Å $\beta = 97.682$ (4)° $V = 550.19$ (18) Å³ $Z = 2$ $F(000) = 252$ $D_x = 1.462$ Mg m⁻³Mo $K\alpha$ radiation, $\lambda = 0.71073$ Å

Cell parameters from 651 reflections

 $\theta = 3.9$ – 26.5 ° $\mu = 0.10$ mm⁻¹ $T = 295$ K

Block, yellow

 $0.30 \times 0.19 \times 0.16$ mm*Data collection*

Bruker SMART CCD

diffractometer

Radiation source: fine-focus sealed tube

Graphite monochromator

 φ and ω scans

Absorption correction: multi-scan

(SADABS; Sheldrick, 2000)

 $T_{\min} = 0.970$, $T_{\max} = 0.984$

1946 measured reflections

946 independent reflections

844 reflections with $I > 2\sigma(I)$ $R_{\text{int}} = 0.013$ $\theta_{\text{max}} = 25.0$ °, $\theta_{\text{min}} = 2.4$ ° $h = -10 \rightarrow 4$ $k = -7 \rightarrow 7$ $l = -11 \rightarrow 11$ *Refinement*Refinement on F^2

Least-squares matrix: full

 $R[F^2 > 2\sigma(F^2)] = 0.038$ $wR(F^2) = 0.108$ $S = 1.05$

946 reflections

90 parameters

0 restraints

Primary atom site location: structure-invariant

direct methods

Secondary atom site location: difference Fourier map

Hydrogen site location: inferred from neighbouring sites

H atoms treated by a mixture of independent and constrained refinement

 $w = 1/[\sigma^2(F_o^2) + (0.0659P)^2 + 0.0834P]$ where $P = (F_o^2 + 2F_c^2)/3$ $(\Delta/\sigma)_{\text{max}} < 0.001$ $\Delta\rho_{\text{max}} = 0.20$ e Å⁻³ $\Delta\rho_{\text{min}} = -0.13$ e Å⁻³*Special details*

Geometry. All e.s.d.'s (except the e.s.d. in the dihedral angle between two l.s. planes) are estimated using the full covariance matrix. The cell e.s.d.'s are taken into account individually in the estimation of e.s.d.'s in distances, angles and torsion angles; correlations between e.s.d.'s in cell parameters are only used when they are defined by crystal symmetry. An approximate (isotropic) treatment of cell e.s.d.'s is used for estimating e.s.d.'s involving l.s. planes.

Refinement. Refinement of F^2 against ALL reflections. The weighted R -factor wR and goodness of fit S are based on F^2 , conventional R -factors R are based on F , with F set to zero for negative F^2 . The threshold expression of $F^2 > \sigma(F^2)$ is used only for calculating R -factors(gt) etc. and is not relevant to the choice of reflections for refinement. R -factors based on F^2 are statistically about twice as large as those based on F , and R -factors based on ALL data will be even larger.

Fractional atomic coordinates and isotropic or equivalent isotropic displacement parameters (Å²)

	<i>x</i>	<i>y</i>	<i>z</i>	$U_{\text{iso}}^*/U_{\text{eq}}$
C1	0.71263 (17)	-0.1470 (2)	-0.12888 (15)	0.0400 (4)
H1A	0.7177	-0.2641	-0.1806	0.048*
C2	0.61260 (19)	0.1595 (2)	-0.10119 (17)	0.0459 (4)

H2A	0.5502	0.2669	-0.1353	0.055*
C3	0.69636 (18)	0.1731 (2)	0.03029 (16)	0.0421 (4)
H3A	0.6851	0.2866	0.0842	0.050*
C4	0.80524 (15)	-0.1312 (2)	0.00078 (14)	0.0326 (4)
C5	0.92285 (16)	-0.2845 (2)	0.05271 (14)	0.0322 (4)
N1	0.61789 (15)	-0.0024 (2)	-0.18134 (13)	0.0462 (4)
N2	0.79325 (14)	0.02862 (18)	0.08288 (12)	0.0372 (4)
N3	1.00358 (16)	-0.2540 (2)	0.17988 (13)	0.0431 (4)
H3B	1.071 (2)	-0.351 (3)	0.2148 (18)	0.045 (4)*
H3C	0.974 (2)	-0.154 (3)	0.2320 (19)	0.050 (5)*
N4	0.94266 (14)	-0.43331 (17)	-0.03069 (11)	0.0356 (4)

Atomic displacement parameters (Å²)

	U^{11}	U^{22}	U^{33}	U^{12}	U^{13}	U^{23}
C1	0.0420 (8)	0.0408 (8)	0.0350 (8)	0.0018 (6)	-0.0029 (6)	-0.0042 (7)
C2	0.0441 (9)	0.0435 (9)	0.0475 (9)	0.0069 (7)	-0.0038 (7)	0.0066 (7)
C3	0.0468 (9)	0.0355 (8)	0.0426 (9)	0.0047 (6)	0.0013 (7)	-0.0023 (7)
C4	0.0353 (8)	0.0329 (8)	0.0295 (7)	-0.0030 (6)	0.0039 (6)	0.0006 (6)
C5	0.0363 (8)	0.0316 (7)	0.0280 (7)	-0.0025 (6)	0.0017 (6)	0.0015 (6)
N1	0.0459 (8)	0.0486 (8)	0.0405 (8)	0.0040 (6)	-0.0078 (6)	0.0010 (6)
N2	0.0429 (7)	0.0339 (7)	0.0335 (7)	0.0024 (5)	-0.0002 (5)	-0.0018 (5)
N3	0.0534 (9)	0.0409 (8)	0.0317 (7)	0.0145 (6)	-0.0068 (6)	-0.0050 (6)
N4	0.0425 (7)	0.0312 (7)	0.0313 (7)	0.0042 (5)	-0.0016 (5)	-0.0001 (5)

Geometric parameters (Å, °)

C1—N1	1.3219 (19)	C4—N2	1.3386 (18)
C1—C4	1.393 (2)	C4—C5	1.4815 (19)
C1—H1A	0.9300	C5—N4	1.3017 (18)
C2—N1	1.331 (2)	C5—N3	1.3405 (18)
C2—C3	1.374 (2)	N3—H3B	0.906 (18)
C2—H2A	0.9300	N3—H3C	0.893 (19)
C3—N2	1.3318 (19)	N4—N4 ⁱ	1.403 (2)
C3—H3A	0.9300		
N1—C1—C4	122.66 (14)	C1—C4—C5	122.46 (13)
N1—C1—H1A	118.7	N4—C5—N3	125.59 (13)
C4—C1—H1A	118.7	N4—C5—C4	117.36 (12)
N1—C2—C3	122.11 (14)	N3—C5—C4	117.01 (13)
N1—C2—H2A	118.9	C1—N1—C2	116.02 (13)
C3—C2—H2A	118.9	C3—N2—C4	116.52 (12)
N2—C3—C2	122.01 (14)	C5—N3—H3B	117.6 (10)
N2—C3—H3A	119.0	C5—N3—H3C	118.3 (11)
C2—C3—H3A	119.0	H3B—N3—H3C	123.0 (15)

N2—C4—C1	120.49 (13)	C5—N4—N4 ⁱ	111.61 (13)
N2—C4—C5	117.03 (12)		

Symmetry code: (i) $-x+2, -y-1, -z$.

Hydrogen-bond geometry (Å, °)

<i>D—H...A</i>	<i>D—H</i>	<i>H...A</i>	<i>D...A</i>	<i>D—H...A</i>
N3—H3B...N2 ⁱⁱ	0.906 (18)	2.280 (18)	3.0539 (18)	143.2 (14)
N3—H3C...N4 ⁱⁱⁱ	0.892 (19)	2.405 (18)	3.1587 (18)	142.3 (16)

Symmetry codes: (ii) $-x+2, y-1/2, -z+1/2$; (iii) $x, -y-1/2, z+1/2$.