

Acta Crystallographica Section E

## Structure Reports

Online

ISSN 1600-5368

# 9-[4-[(*E*)-2-(4,6-Dimethyl-1,3,5-triazin-2-yl)ethenyl]phenyl]-9*H*-carbazole

 Chang-Lin Liu,<sup>a</sup> Gang Xue,<sup>b</sup> Yue-Zhi Cui,<sup>a\*</sup> Tian-Duo Li<sup>a</sup> and Seik Weng Ng<sup>c</sup>

<sup>a</sup>Department of Chemical Engineering, Shandong Institute of Light Industry, Jinan 250353, Shandong Province, People's Republic of China, <sup>b</sup>School of Materials Science and Engineering, Institute of Power Source and Ecomaterials Science, Hebei University of Technology, Tianjin 300130, People's Republic of China, and <sup>c</sup>Department of Chemistry, University of Malaya, 50603 Kuala Lumpur, Malaysia  
Correspondence e-mail: yuezhicui@163.com

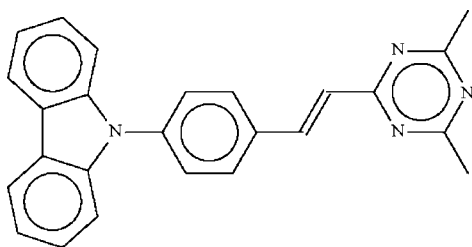
Received 22 July 2009; accepted 30 July 2009

Key indicators: single-crystal X-ray study;  $T = 293$  K; mean  $\sigma(\text{C}-\text{C}) = 0.007$  Å;  $R$  factor = 0.055;  $wR$  factor = 0.160; data-to-parameter ratio = 8.6.

In the crystal structure of the title compound,  $\text{C}_{25}\text{H}_{20}\text{N}_4$ , the triazinyl ring is nearly coplanar with the planar (r.m.s. deviation = 0.028 Å) phenylethenyl unit, the twist being only 5.8 (2)°; however, the planar carbazolyl unit (r.m.s. deviation = 0.008 Å) is twisted by 47.8 (1)° with respect to the phenylethenyl unit. The nonplanar nature of the molecule explains the phenomenon of light emission at short wavelengths in the solid state but at long wavelengths in solution.

## Related literature

For background literature on donor- $\pi$ -acceptor chromophores, see: Cui *et al.* (2003, 2004); Kannan *et al.* (2004); Maury & Bozec (2005); Zhong *et al.* (2008).



## Experimental

## Crystal data

$\text{C}_{25}\text{H}_{20}\text{N}_4$   
 $M_r = 376.45$   
 Orthorhombic,  $P2_12_12_1$   
 $a = 8.0415$  (8) Å  
 $b = 15.716$  (2) Å  
 $c = 16.098$  (1) Å  
 $V = 2034.4$  (3) Å<sup>3</sup>  
 $Z = 4$   
 Mo  $K\alpha$  radiation  
 $\mu = 0.07$  mm<sup>-1</sup>  
 $T = 293$  K  
 $0.42 \times 0.28 \times 0.16$  mm

## Data collection

Siemens P4 four-circle diffractometer  
 Absorption correction:  $\psi$  scan (North *et al.*, 1968)  
 $T_{\min} = 0.901$ ,  $T_{\max} = 0.988$   
 2291 measured reflections  
 2291 independent reflections  
 1288 reflections with  $I > 2\sigma(I)$   
 $R_{\text{int}} = 0.026$   
 3 standard reflections every 97 reflections  
 intensity decay: 1%

## Refinement

$R[F^2 > 2\sigma(F^2)] = 0.055$   
 $wR(F^2) = 0.160$   
 $S = 1.00$   
 2291 reflections  
 265 parameters  
 H-atom parameters constrained  
 $\Delta\rho_{\max} = 0.26$  e Å<sup>-3</sup>  
 $\Delta\rho_{\min} = -0.30$  e Å<sup>-3</sup>

Data collection: XSCANS (Siemens, 1996); cell refinement: XSCANS; data reduction: XSCANS; program(s) used to solve structure: SHELXS97 (Sheldrick, 2008); program(s) used to refine structure: SHELXL97 (Sheldrick, 2008); molecular graphics: XSEED (Barbour, 2001); software used to prepare material for publication: publCIF (Westrip, 2009).

This work was supported by the National Natural Science Foundation of China (No. 20676074) and the Foundation for Excellent Middle/Young Scientists of Shandong Province (grant No. 2005BS11011).

Supplementary data and figures for this paper are available from the IUCr electronic archives (Reference: BT5017).

## References

- Barbour, L. J. (2001). *J. Supramol. Chem.* **1**, 189–191.  
 Cui, Y. Z., Fang, Q., Huang, Z. L., Xue, G., Xu, G. B. & Yu, W. T. (2004). *J. Mater. Chem.* **14**, 2443–2449.  
 Cui, Y. Z., Fang, Q., Lei, H., Xue, G. & Yu, W. T. (2003). *Chem. Phys. Lett.* **377**, 507–511.  
 Kannan, R., He, G. S., Lin, T. C., Prasad, P. N., Vaia, R. A. & Tan, L. S. (2004). *Chem. Mater.* **16**, 185–194.  
 Maury, O. & Bozec, H. L. (2005). *Acc. Chem. Res.* **38**, 691–704.  
 North, A. C. T., Phillips, D. C. & Mathews, F. S. (1968). *Acta Cryst.* **A24**, 351–359.  
 Sheldrick, G. M. (2008). *Acta Cryst.* **A64**, 112–122.  
 Siemens (1996). XSCANS. Bruker AXS Inc., Madison, Wisconsin, USA.  
 Westrip, S. P. (2009). *publCIF*. In preparation.  
 Zhong, H. L., Xu, E. J., Zeng, D. L., Du, J. P., Sun, J., Ren, S. J., Jiang, B. & Fang, Q. (2008). *Org. Lett.* **10**, 709–712.

**supplementary materials**

*Acta Cryst.* (2009). E65, o2095 [ doi:10.1107/S1600536809030359 ]

## 9-{4-[(*E*)-2-(4,6-Dimethyl-1,3,5-triazin-2-yl)ethenyl]phenyl}-9*H*-carbazole

C.-L. Liu, G. Xue, Y.-Z. Cui, T.-D. Li and S. W. Ng

### Comment

*s*-Triazine, which has a conjugated structure is commonly derivatized in the design of chromophores that display specific physical properties (Cui *et al.*, 2003; Maury *et al.*, 2005; Zhong *et al.*, 2008), particularly two-photon absorption (Cui *et al.*, 2004; Kannan *et al.*, 2004). The title compound (Fig. 1, Scheme 1) exemplifies a donor- $\pi$ -acceptor compound with a carbazolyl donor and an *s*-triazinyl acceptor. It emits blue light in solid state and yellow-green light in solution. However, this property is unusual as most compounds show a bathochromic shift of fluorescence in solid state relative to their emission in solution.

An intramolecular charge transfer (ICT) axis runs from atom N2 to atom N4. The phenylethenyl unit is almost coplanar with the triazinyl ring. However, the carbazolyl unit is severely twisted with respect to the phenylethenyl and triazinyl units, so that conjugation is poor. Accordingly, such a poorly-conjugated molecule can only emit at a short wavelength (in the solid state) whereas in solution, the molecule is probably freed from strain and can achieve planarity. Consequently, it emits at longer wavelengths. The molecules are packed such that the axes of one half the number molecules are aligned in one direction whereas those of the other half are aligned approximately perpendicular to it (Fig. 2).

### Experimental

4-*N*-Carbazolylbenzaldehyde (2.03 g, 7.5 mmol) in methanol (30 ml) was added to 2,4,6-trimethyl-*s*-triazine (1.85 g, 15 mmol) and potassium hydroxide (0.5 g) in methanol (50 ml). The mixture was heated for 24 h. The solvent was removed and the residue was purified by column chromatography on silica gel by using benzene/ethanol (10/1) as eluent. Crystals were obtained by recrystallization from a benzene/ethanol solution of the compound.

### Refinement

Due to the absence of anomalous scatterers, 1509 Friedel pairs were merged. Hydrogen atoms were geometrically fixed and allowed to ride on their parent atoms, with C–H 0.93–0.96 Å and  $U_{iso}(H)$  set to 1.2–1.5 $U_{eq}(C)$ .

### Figures

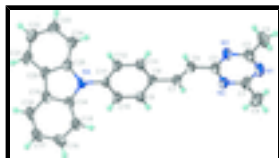


Fig. 1. Anisotropic displacement ellipsoid plot (Barbour, 2001) of  $C_{25}H_{20}N_4$  with displacement ellipsoids are drawn at the 50% probability level.

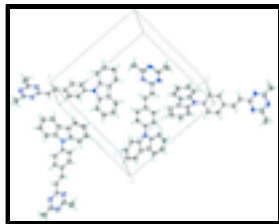


Fig. 2. Anisotropic displacement ellipsoid plot (Barbour, 2001) depicting the alignment of four molecules in the unit cell.

## 9-{4-[(E)-2-(4,6-Dimethyl-1,3,5-triazin-2-yl)ethenyl]phenyl}-9H- carbazole

### Crystal data

$C_{25}H_{20}N_4$	$F_{000} = 792$
$M_r = 376.45$	$D_x = 1.229 \text{ Mg m}^{-3}$
Orthorhombic, $P2_12_12_1$	Mo $K\alpha$ radiation, $\lambda = 0.71073 \text{ \AA}$
Hall symbol: P 2ac 2ab	Cell parameters from 40 reflections
$a = 8.0415 (8) \text{ \AA}$	$\theta = 4.6\text{--}12.4^\circ$
$b = 15.716 (2) \text{ \AA}$	$\mu = 0.07 \text{ mm}^{-1}$
$c = 16.098 (1) \text{ \AA}$	$T = 293 \text{ K}$
$V = 2034.4 (3) \text{ \AA}^3$	Prism, pale green
$Z = 4$	$0.42 \times 0.28 \times 0.16 \text{ mm}$

### Data collection

Siemens P4 four-circle diffractometer	$R_{\text{int}} = 0.026$
Radiation source: fine-focus sealed tube	$\theta_{\text{max}} = 26.0^\circ$
Monochromator: graphite	$\theta_{\text{min}} = 1.8^\circ$
$T = 293 \text{ K}$	$h = -1 \rightarrow 9$
$\omega$ scans	$k = -19 \rightarrow 1$
Absorption correction: $\psi$ scan (North <i>et al.</i> , 1968)	$l = -19 \rightarrow 1$
$T_{\text{min}} = 0.901$ , $T_{\text{max}} = 0.988$	3 standard reflections
2991 measured reflections	every 97 reflections
2291 independent reflections	intensity decay: 1%
1288 reflections with $I > 2\sigma(I)$	

### Refinement

Refinement on $F^2$	Hydrogen site location: inferred from neighbouring sites
Least-squares matrix: full	H-atom parameters constrained
$R[F^2 > 2\sigma(F^2)] = 0.055$	$w = 1/[\sigma^2(F_o^2) + (0.0785P)^2]$
$wR(F^2) = 0.160$	where $P = (F_o^2 + 2F_c^2)/3$
$S = 1.00$	$(\Delta/\sigma)_{\text{max}} = 0.001$
2291 reflections	$\Delta\rho_{\text{max}} = 0.26 \text{ e \AA}^{-3}$
	$\Delta\rho_{\text{min}} = -0.30 \text{ e \AA}^{-3}$

265 parameters

Extinction correction: SHELXL97 (Sheldrick, 2008),

$$F_c^* = kFc[1+0.001xFc^2\lambda^3/\sin(2\theta)]^{-1/4}$$

Primary atom site location: structure-invariant direct methods

Extinction coefficient: 0.063 (5)

Secondary atom site location: difference Fourier map

*Fractional atomic coordinates and isotropic or equivalent isotropic displacement parameters ( $\text{\AA}^2$ )*

	x	y	z	$U_{iso}^*/U_{eq}$
N1	0.3440 (7)	0.5461 (3)	0.7650 (3)	0.0774 (15)
N2	0.2899 (6)	0.4809 (2)	0.6348 (2)	0.0627 (12)
N3	0.4255 (6)	0.4024 (3)	0.7419 (3)	0.0659 (12)
N4	0.3597 (5)	0.0613 (2)	0.3022 (2)	0.0511 (11)
C1	0.2848 (8)	0.5466 (3)	0.6880 (4)	0.0732 (17)
C2	0.4126 (8)	0.4724 (4)	0.7893 (3)	0.0727 (17)
C3	0.3621 (7)	0.4108 (3)	0.6658 (3)	0.0584 (14)
C4	0.2098 (9)	0.6278 (3)	0.6563 (4)	0.091 (2)
H4A	0.1203	0.6448	0.6921	0.137*
H4B	0.1680	0.6190	0.6011	0.137*
H4C	0.2932	0.6715	0.6554	0.137*
C5	0.4801 (8)	0.4663 (4)	0.8757 (3)	0.097 (2)
H5A	0.4946	0.4076	0.8903	0.146*
H5B	0.4036	0.4925	0.9137	0.146*
H5C	0.5853	0.4950	0.8785	0.146*
C6	0.3767 (7)	0.3359 (3)	0.6121 (3)	0.0563 (13)
H6	0.4272	0.2875	0.6337	0.068*
C7	0.3217 (7)	0.3333 (3)	0.5341 (3)	0.0539 (12)
H7	0.2704	0.3823	0.5144	0.065*
C8	0.3331 (7)	0.2616 (3)	0.4757 (3)	0.0498 (12)
C9	0.2847 (7)	0.2736 (3)	0.3941 (3)	0.0545 (13)
H9	0.2475	0.3269	0.3771	0.065*
C10	0.2910 (7)	0.2076 (3)	0.3373 (3)	0.0544 (13)
H10	0.2559	0.2166	0.2830	0.065*
C11	0.3490 (6)	0.1284 (3)	0.3607 (3)	0.0471 (12)
C12	0.3989 (7)	0.1159 (3)	0.4417 (3)	0.0537 (12)
H12	0.4389	0.0630	0.4581	0.064*
C13	0.3898 (7)	0.1816 (3)	0.4988 (3)	0.0563 (13)
H13	0.4223	0.1720	0.5534	0.068*
C14	0.4250 (6)	0.0677 (3)	0.2221 (3)	0.0503 (12)
C15	0.5018 (7)	0.1357 (3)	0.1836 (3)	0.0630 (14)
H15	0.5147	0.1875	0.2108	0.076*
C16	0.5584 (7)	0.1243 (4)	0.1036 (3)	0.0700 (15)
H16	0.6104	0.1693	0.0766	0.084*
C17	0.5401 (7)	0.0476 (4)	0.0625 (3)	0.0712 (16)
H17	0.5785	0.0419	0.0083	0.085*
C18	0.4658 (6)	-0.0198 (4)	0.1013 (3)	0.0636 (15)
H18	0.4539	-0.0713	0.0735	0.076*
C19	0.4080 (6)	-0.0115 (3)	0.1823 (3)	0.0521 (12)
C20	0.3274 (6)	-0.0680 (3)	0.2402 (3)	0.0520 (12)

## supplementary materials

---

C21	0.2764 (7)	-0.1526 (3)	0.2366 (3)	0.0662 (15)
H21	0.2946	-0.1844	0.1888	0.079*
C22	0.2003 (8)	-0.1884 (3)	0.3032 (3)	0.0733 (16)
H22	0.1661	-0.2448	0.3006	0.088*
C23	0.1725 (7)	-0.1418 (3)	0.3754 (3)	0.0688 (15)
H23	0.1202	-0.1675	0.4204	0.083*
C24	0.2220 (7)	-0.0573 (3)	0.3811 (3)	0.0624 (14)
H24	0.2028	-0.0260	0.4291	0.075*
C25	0.3004 (6)	-0.0213 (3)	0.3137 (3)	0.0520 (12)

### Atomic displacement parameters ( $\text{\AA}^2$ )

	$U^{11}$	$U^{22}$	$U^{33}$	$U^{12}$	$U^{13}$	$U^{23}$
N1	0.088 (4)	0.069 (3)	0.075 (3)	-0.020 (3)	0.025 (3)	-0.033 (3)
N2	0.075 (3)	0.049 (2)	0.065 (2)	-0.009 (2)	0.021 (3)	-0.010 (2)
N3	0.077 (3)	0.064 (3)	0.056 (2)	-0.019 (3)	0.017 (3)	-0.019 (2)
N4	0.064 (3)	0.044 (2)	0.045 (2)	-0.002 (2)	0.001 (2)	-0.0078 (17)
C1	0.081 (4)	0.057 (3)	0.081 (4)	-0.021 (3)	0.031 (4)	-0.025 (3)
C2	0.075 (4)	0.083 (4)	0.060 (3)	-0.030 (4)	0.023 (3)	-0.023 (3)
C3	0.067 (4)	0.055 (3)	0.053 (3)	-0.015 (3)	0.017 (3)	-0.013 (2)
C4	0.108 (5)	0.053 (3)	0.114 (5)	0.003 (3)	0.038 (5)	-0.016 (3)
C5	0.099 (5)	0.126 (5)	0.066 (4)	-0.037 (4)	0.013 (4)	-0.041 (4)
C6	0.072 (4)	0.047 (3)	0.050 (3)	-0.008 (3)	0.011 (3)	-0.009 (2)
C7	0.065 (3)	0.043 (2)	0.053 (3)	-0.005 (3)	0.008 (3)	-0.004 (2)
C8	0.060 (3)	0.041 (2)	0.049 (3)	-0.005 (2)	0.004 (3)	-0.007 (2)
C9	0.071 (4)	0.040 (2)	0.052 (3)	0.006 (3)	0.001 (3)	-0.005 (2)
C10	0.071 (3)	0.047 (3)	0.046 (2)	0.004 (3)	-0.002 (3)	-0.005 (2)
C11	0.056 (3)	0.043 (2)	0.043 (2)	0.000 (2)	0.001 (2)	-0.008 (2)
C12	0.071 (3)	0.042 (2)	0.048 (3)	0.004 (3)	-0.006 (3)	-0.006 (2)
C13	0.074 (4)	0.051 (3)	0.043 (2)	-0.001 (3)	-0.004 (3)	-0.007 (2)
C14	0.052 (3)	0.054 (3)	0.044 (3)	0.006 (3)	0.000 (2)	-0.006 (2)
C15	0.074 (4)	0.063 (3)	0.051 (3)	-0.003 (3)	0.002 (3)	-0.006 (3)
C16	0.077 (4)	0.084 (4)	0.049 (3)	-0.005 (4)	0.007 (3)	-0.001 (3)
C17	0.074 (4)	0.094 (4)	0.045 (3)	0.007 (4)	0.003 (3)	-0.006 (3)
C18	0.064 (4)	0.076 (3)	0.050 (3)	0.011 (3)	-0.006 (3)	-0.026 (3)
C19	0.051 (3)	0.057 (3)	0.048 (3)	0.008 (3)	-0.007 (2)	-0.010 (2)
C20	0.053 (3)	0.047 (3)	0.056 (3)	0.006 (2)	-0.009 (3)	-0.012 (2)
C21	0.072 (4)	0.054 (3)	0.072 (3)	0.004 (3)	-0.011 (3)	-0.019 (3)
C22	0.091 (4)	0.047 (3)	0.082 (4)	-0.001 (3)	-0.005 (4)	-0.007 (3)
C23	0.078 (4)	0.057 (3)	0.072 (3)	-0.004 (3)	0.008 (3)	0.003 (3)
C24	0.073 (4)	0.049 (3)	0.065 (3)	0.003 (3)	0.007 (3)	-0.008 (2)
C25	0.057 (3)	0.044 (2)	0.055 (3)	0.004 (2)	-0.005 (3)	-0.004 (2)

### Geometric parameters ( $\text{\AA}$ , $^\circ$ )

N1—C1	1.328 (7)	C10—H10	0.9300
N1—C2	1.342 (7)	C11—C12	1.378 (6)
N2—C1	1.341 (5)	C12—C13	1.384 (6)
N2—C3	1.341 (6)	C12—H12	0.9300

N3—C3	1.333 (6)	C13—H13	0.9300
N3—C2	1.342 (6)	C14—C15	1.382 (6)
N4—C25	1.396 (6)	C14—C19	1.406 (6)
N4—C14	1.396 (5)	C15—C16	1.378 (6)
N4—C11	1.416 (5)	C15—H15	0.9300
C1—C4	1.500 (7)	C16—C17	1.382 (7)
C2—C5	1.496 (8)	C16—H16	0.9300
C3—C6	1.465 (6)	C17—C18	1.367 (7)
C4—H4A	0.9600	C17—H17	0.9300
C4—H4B	0.9600	C18—C19	1.391 (6)
C4—H4C	0.9600	C18—H18	0.9300
C5—H5A	0.9600	C19—C20	1.441 (6)
C5—H5B	0.9600	C20—C21	1.393 (6)
C5—H5C	0.9600	C20—C25	1.408 (6)
C6—C7	1.332 (6)	C21—C22	1.357 (7)
C6—H6	0.9300	C21—H21	0.9300
C7—C8	1.471 (5)	C22—C23	1.392 (7)
C7—H7	0.9300	C22—H22	0.9300
C8—C9	1.383 (6)	C23—C24	1.389 (6)
C8—C13	1.388 (6)	C23—H23	0.9300
C9—C10	1.383 (6)	C24—C25	1.377 (6)
C9—H9	0.9300	C24—H24	0.9300
C10—C11	1.382 (6)		
C1—N1—C2	115.1 (4)	C10—C11—N4	120.6 (4)
C1—N2—C3	114.1 (4)	C11—C12—C13	120.4 (4)
C3—N3—C2	114.3 (5)	C11—C12—H12	119.8
C25—N4—C14	108.5 (4)	C13—C12—H12	119.8
C25—N4—C11	125.8 (4)	C12—C13—C8	121.0 (4)
C14—N4—C11	125.7 (4)	C12—C13—H13	119.5
N1—C1—N2	125.4 (5)	C8—C13—H13	119.5
N1—C1—C4	117.8 (5)	C15—C14—N4	129.6 (4)
N2—C1—C4	116.7 (5)	C15—C14—C19	121.6 (4)
N3—C2—N1	125.0 (5)	N4—C14—C19	108.8 (4)
N3—C2—C5	116.6 (6)	C16—C15—C14	117.8 (5)
N1—C2—C5	118.3 (5)	C16—C15—H15	121.1
N3—C3—N2	126.1 (4)	C14—C15—H15	121.1
N3—C3—C6	115.6 (5)	C15—C16—C17	121.8 (5)
N2—C3—C6	118.4 (4)	C15—C16—H16	119.1
C1—C4—H4A	109.5	C17—C16—H16	119.1
C1—C4—H4B	109.5	C18—C17—C16	120.2 (5)
H4A—C4—H4B	109.5	C18—C17—H17	119.9
C1—C4—H4C	109.5	C16—C17—H17	119.9
H4A—C4—H4C	109.5	C17—C18—C19	120.1 (5)
H4B—C4—H4C	109.5	C17—C18—H18	120.0
C2—C5—H5A	109.5	C19—C18—H18	120.0
C2—C5—H5B	109.5	C18—C19—C14	118.6 (5)
H5A—C5—H5B	109.5	C18—C19—C20	134.3 (5)
C2—C5—H5C	109.5	C14—C19—C20	107.1 (4)
H5A—C5—H5C	109.5	C21—C20—C25	119.1 (5)

## supplementary materials

---

H5B—C5—H5C	109.5	C21—C20—C19	133.9 (5)
C7—C6—C3	123.6 (5)	C25—C20—C19	107.0 (4)
C7—C6—H6	118.2	C22—C21—C20	119.7 (5)
C3—C6—H6	118.2	C22—C21—H21	120.1
C6—C7—C8	127.3 (5)	C20—C21—H21	120.1
C6—C7—H7	116.4	C21—C22—C23	121.0 (5)
C8—C7—H7	116.4	C21—C22—H22	119.5
C9—C8—C13	118.1 (4)	C23—C22—H22	119.5
C9—C8—C7	119.0 (4)	C24—C23—C22	120.8 (5)
C13—C8—C7	122.9 (4)	C24—C23—H23	119.6
C8—C9—C10	121.0 (4)	C22—C23—H23	119.6
C8—C9—H9	119.5	C25—C24—C23	118.2 (5)
C10—C9—H9	119.5	C25—C24—H24	120.9
C9—C10—C11	120.5 (4)	C23—C24—H24	120.9
C9—C10—H10	119.8	C24—C25—N4	130.0 (4)
C11—C10—H10	119.8	C24—C25—C20	121.2 (4)
C12—C11—C10	119.0 (4)	N4—C25—C20	108.7 (4)
C12—C11—N4	120.3 (4)		
C2—N1—C1—N2	-0.5 (9)	C25—N4—C14—C19	-0.3 (5)
C2—N1—C1—C4	-178.7 (5)	C11—N4—C14—C19	-177.8 (4)
C3—N2—C1—N1	0.1 (8)	N4—C14—C15—C16	178.7 (5)
C3—N2—C1—C4	178.3 (5)	C19—C14—C15—C16	1.4 (8)
C3—N3—C2—N1	-0.4 (8)	C14—C15—C16—C17	0.0 (8)
C3—N3—C2—C5	179.4 (5)	C15—C16—C17—C18	-0.7 (9)
C1—N1—C2—N3	0.7 (9)	C16—C17—C18—C19	0.1 (8)
C1—N1—C2—C5	-179.2 (5)	C17—C18—C19—C14	1.2 (7)
C2—N3—C3—N2	0.0 (8)	C17—C18—C19—C20	-179.4 (5)
C2—N3—C3—C6	179.0 (4)	C15—C14—C19—C18	-1.9 (7)
C1—N2—C3—N3	0.1 (8)	N4—C14—C19—C18	-179.8 (4)
C1—N2—C3—C6	-178.9 (5)	C15—C14—C19—C20	178.5 (5)
N3—C3—C6—C7	-179.4 (5)	N4—C14—C19—C20	0.6 (5)
N2—C3—C6—C7	-0.3 (8)	C18—C19—C20—C21	-0.2 (10)
C3—C6—C7—C8	179.2 (5)	C14—C19—C20—C21	179.3 (5)
C6—C7—C8—C9	-173.2 (5)	C18—C19—C20—C25	179.7 (5)
C6—C7—C8—C13	7.1 (8)	C14—C19—C20—C25	-0.8 (5)
C13—C8—C9—C10	0.7 (8)	C25—C20—C21—C22	0.7 (8)
C7—C8—C9—C10	-179.1 (5)	C19—C20—C21—C22	-179.3 (6)
C8—C9—C10—C11	-1.3 (8)	C20—C21—C22—C23	-0.2 (9)
C9—C10—C11—C12	0.7 (8)	C21—C22—C23—C24	0.1 (9)
C9—C10—C11—N4	-178.3 (5)	C22—C23—C24—C25	-0.5 (8)
C25—N4—C11—C12	49.7 (7)	C23—C24—C25—N4	178.9 (5)
C14—N4—C11—C12	-133.2 (5)	C23—C24—C25—C20	1.1 (8)
C25—N4—C11—C10	-131.3 (5)	C14—N4—C25—C24	-178.2 (5)
C14—N4—C11—C10	45.8 (7)	C11—N4—C25—C24	-0.7 (8)
C10—C11—C12—C13	0.5 (8)	C14—N4—C25—C20	-0.2 (5)
N4—C11—C12—C13	179.5 (5)	C11—N4—C25—C20	177.3 (4)
C11—C12—C13—C8	-1.0 (8)	C21—C20—C25—C24	-1.2 (7)
C9—C8—C13—C12	0.4 (8)	C19—C20—C25—C24	178.8 (4)
C7—C8—C13—C12	-179.8 (5)	C21—C20—C25—N4	-179.4 (5)

C25—N4—C14—C15	-177.9 (5)	C19—C20—C25—N4	0.6 (5)
C11—N4—C14—C15	4.6 (8)		

Fig. 1

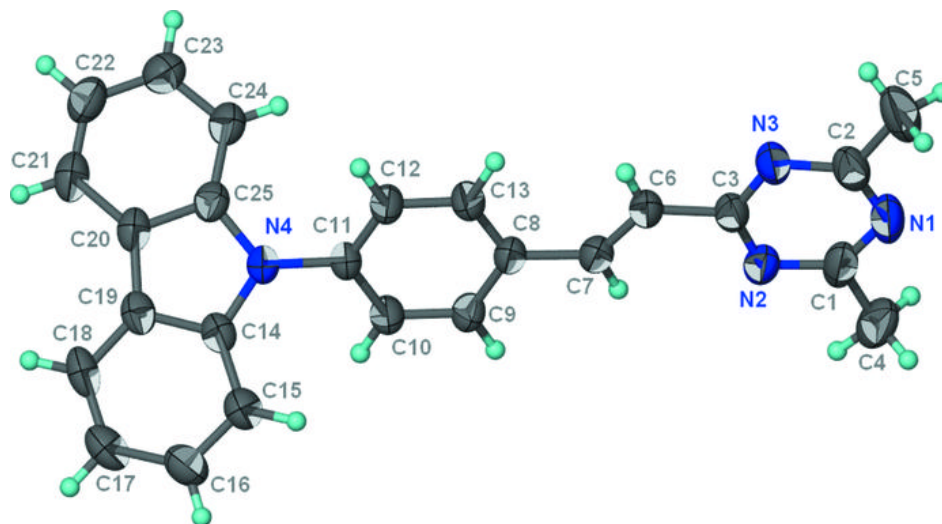


Fig. 2

