

Acta Crystallographica Section E

Structure Reports

Online

ISSN 1600-5368

(Cyclohexanecarboxylato)bis(di-2-pyridylamine)zinc(II) nitrate monohydrate

Ying-Jie Cai, Jun Yang, Peng Huang, Lei Lei and Qing-Fu Zeng*

Engineering Research Center for Clean Production of Textile Dyeing and Printing, Ministry of Education, Wuhan 430073, People's Republic of China

Correspondence e-mail: qfzeng@wuse.edu.cn

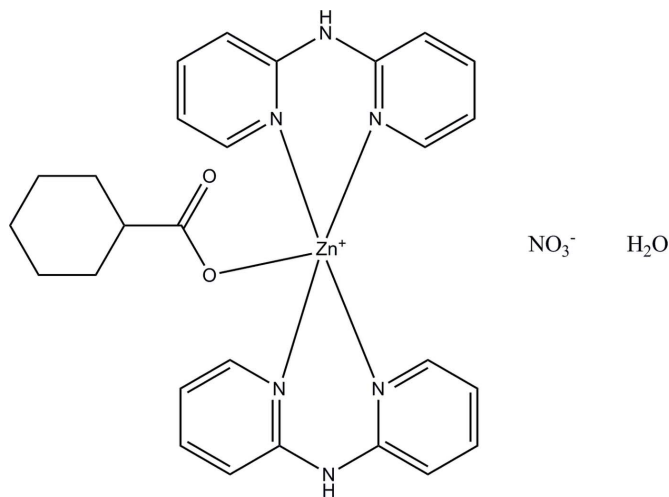
Received 15 August 2009; accepted 21 August 2009

Key indicators: single-crystal X-ray study; $T = 296$ K; mean $\sigma(\text{C}-\text{C}) = 0.005$ Å; R factor = 0.039; wR factor = 0.109; data-to-parameter ratio = 16.0.

In the title compound, $[\text{Zn}(\text{C}_7\text{H}_{11}\text{O}_2)(\text{C}_{10}\text{H}_9\text{N}_3)_2]\text{NO}_3 \cdot \text{H}_2\text{O}$, the Zn^{II} atom is five-coordinated by two bidentate di-2-pyridylamine ligands and one O atom from a cyclohexanecarboxylate anion, resulting in a ZnON_4 square-based pyramidal coordination for the metal ion with the O atom in one of the basal positions. In the crystal, the components interact by way of $\text{O}-\text{H} \cdots \text{O}$, $\text{O}-\text{H} \cdots \text{N}$ and $\text{N}-\text{H} \cdots \text{O}$ hydrogen bonds.

Related literature

For background to acid and amine metal complexes and their molecular architectures, see: Yang *et al.* (2004). For reference structural data, see: Allen *et al.* (1987).



Experimental

Crystal data

$[\text{Zn}(\text{C}_7\text{H}_{11}\text{O}_2)(\text{C}_{10}\text{H}_9\text{N}_3)_2]\text{NO}_3 \cdot \text{H}_2\text{O}$	$\beta = 106.016$ (3) $^\circ$
$M_r = 614.96$	$\gamma = 99.706$ (3) $^\circ$
Triclinic, $P\bar{1}$	$V = 1447.3$ (2) Å ³
$a = 10.4856$ (3) Å	$Z = 2$
$b = 11.6116$ (13) Å	Mo $K\alpha$ radiation
$c = 13.4876$ (13) Å	$\mu = 0.90$ mm ⁻¹
$\alpha = 107.526$ (3) $^\circ$	$T = 296$ K
	$0.32 \times 0.26 \times 0.20$ mm

Data collection

Enraf–Nonius CAD-4 diffractometer	6182 independent reflections
Absorption correction: ψ scan (North <i>et al.</i> , 1968)	5178 reflections with $I > 2\sigma(I)$
$T_{\text{min}} = 0.761$, $T_{\text{max}} = 0.840$	$R_{\text{int}} = 0.014$
8944 measured reflections	200 standard reflections
	every 3 reflections
	intensity decay: 1%

Refinement

$R[F^2 > 2\sigma(F^2)] = 0.039$	H atoms treated by a mixture of independent and constrained refinement
$wR(F^2) = 0.109$	$\Delta\rho_{\text{max}} = 0.46$ e Å ⁻³
$S = 1.03$	$\Delta\rho_{\text{min}} = -0.34$ e Å ⁻³
6182 reflections	
386 parameters	
3 restraints	

Table 1

Selected bond lengths (Å).

Zn1–N1	1.9984 (18)	Zn1–N6	2.0405 (19)
Zn1–N3	2.0192 (19)	Zn1–O2	1.9803 (16)
Zn1–N4	2.166 (2)		

Table 2

Hydrogen-bond geometry (Å, $^\circ$).

$D-\text{H} \cdots A$	$D-\text{H}$	$\text{H} \cdots A$	$D \cdots A$	$D-\text{H} \cdots A$
$\text{N12}-\text{H12} \cdots \text{O6}^{\text{i}}$	0.71 (3)	2.10 (3)	2.806 (3)	174 (3)
$\text{N11}-\text{H11A} \cdots \text{O1}^{\text{ii}}$	0.70 (2)	2.11 (3)	2.810 (3)	177 (3)
$\text{O6}-\text{H6B} \cdots \text{N7}^{\text{ii}}$	0.836 (10)	2.586 (14)	3.406 (4)	167 (3)
$\text{O6}-\text{H6B} \cdots \text{O5}^{\text{ii}}$	0.836 (10)	2.48 (3)	3.164 (4)	139 (3)
$\text{O6}-\text{H6B} \cdots \text{O4}^{\text{ii}}$	0.836 (10)	2.088 (12)	2.904 (4)	165 (3)
$\text{O6}-\text{H6A} \cdots \text{O5}^{\text{iii}}$	0.838 (10)	1.971 (15)	2.787 (4)	164 (4)

Symmetry codes: (i) $x, y + 1, z$; (ii) $-x + 1, -y + 1, -z + 1$; (iii) $x, y, z + 1$.

Data collection: *CAD-4 Software* (Enraf–Nonius, 1989); cell refinement: *CAD-4 Software*; data reduction: *XCAD4* (Harms & Wocadlo, 1995); program(s) used to solve structure: *SHELXS97* (Sheldrick, 2008); program(s) used to refine structure: *SHELXL97* (Sheldrick, 2008); molecular graphics: *SHELXTL* (Sheldrick, 2008); software used to prepare material for publication: *SHELXTL*.

The project was supported by the Scientific Research Foundation for Returned Overseas Chinese Scholars, State Education Ministry, Educational Commission of Hubei Province (D20091703) and the Natural Science Foundation of Hubei Province (2008CDB038).

Supplementary data and figures for this paper are available from the IUCr electronic archives (Reference: HB5052).

References

- Allen, F. H., Kennard, O., Watson, D. G., Brammer, L., Orpen, A. G. & Taylor, R. (1987). *J. Chem. Soc. Perkin Trans. 2*, pp. S1–19.
- Enraf–Nonius (1989). *CAD-4 Software*. Enraf–Nonius, Delft, The Netherlands.
- Harms, K. & Wocadlo, S. (1995). *XCAD4*. University of Marburg, Germany.
- North, A. C. T., Phillips, D. C. & Mathews, F. S. (1968). *Acta Cryst. A***24**, 351–359.
- Sheldrick, G. M. (2008). *Acta Cryst. A***64**, 112–122.
- Yang, H.-L., You, Z.-L. & Zhu, H.-L. (2004). *Acta Cryst. E***60**, m1213–m1214.

supplementary materials

Acta Cryst. (2009). E65, m1144-m1145 [doi:10.1107/S1600536809033443]

(Cyclohexanecarboxylato)bis(di-2-pyridylamine)zinc(II) nitrate monohydrate

Y.-J. Cai, J. Yang, P. Huang, L. Lei and Q.-F. Zeng

Comment

There has been much research interest in the acid and amine metal complexes due to their molecular architectures (e.g. Yang *et al.*, 2004). In this work, we report here the crystal structure of the title compound, (I). In (I), all bond lengths are within normal ranges (Allen *et al.*, 1987) (Fig. 1). The Zn^{II} atom is five-coordinated by four N atoms from di-2-pyridylamine and one O atom from cyclohexanecarboxylic acid.

Experimental

A mixture of di-2-pyridylamine (342 mg, 2 mmol), cyclohexanecarboxylic acid (256 mg, 2 mmol) and ZnNO₃·6H₂O (1 mmol, 297 mg) in methanol (10 ml) was stirred for 3 h. After keeping the filtrate in air for 8 d, colourless blocks of (I) were formed.

Refinement

The N- and O-bound H atoms were located in a difference map and their positions were freely refined. The C-bound H atoms were positioned geometrically (C—H = 0.93 Å for the aromatic H atoms and C—H = 0.96 Å for the aliphatic H atoms) and were refined as riding, with $U_{\text{iso}}(\text{H}) = 1.2U_{\text{eq}}(\text{C})$.

Figures

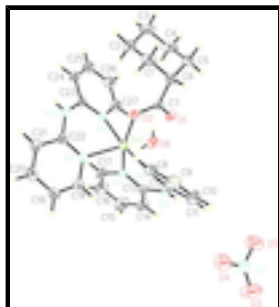


Fig. 1. The molecular structure of (I) showing 30% probability displacement ellipsoids.

(Cyclohexanecarboxylato)bis(di-2-pyridylamine)zinc(II) nitrate monohydrate

Crystal data

[Zn(C₇H₁₁O₂)(C₁₀H₉N₃)₂]NO₃·H₂O

$M_r = 614.96$

Triclinic, $P\bar{1}$

Hall symbol: -P 1

$Z = 2$

$F_{000} = 640$

$D_x = 1.411 \text{ Mg m}^{-3}$

Mo $K\alpha$ radiation, $\lambda = 0.71073 \text{ \AA}$

supplementary materials

$a = 10.4856 (3) \text{ \AA}$	Cell parameters from 25 reflections
$b = 11.6116 (13) \text{ \AA}$	$\theta = 9\text{--}12^\circ$
$c = 13.4876 (13) \text{ \AA}$	$\mu = 0.90 \text{ mm}^{-1}$
$\alpha = 107.526 (3)^\circ$	$T = 296 \text{ K}$
$\beta = 106.016 (3)^\circ$	Block, colorless
$\gamma = 99.706 (3)^\circ$	$0.32 \times 0.26 \times 0.20 \text{ mm}$
$V = 1447.3 (2) \text{ \AA}^3$	

Data collection

Enraf–Nonius CAD-4 diffractometer	$R_{\text{int}} = 0.014$
Radiation source: fine-focus sealed tube	$\theta_{\text{max}} = 27.0^\circ$
Monochromator: graphite	$\theta_{\text{min}} = 1.7^\circ$
$T = 296 \text{ K}$	$h = -12 \rightarrow 13$
$\omega/2\theta$ scans	$k = -14 \rightarrow 13$
Absorption correction: ψ scan (North <i>et al.</i> , 1968)	$l = -17 \rightarrow 17$
$T_{\text{min}} = 0.761$, $T_{\text{max}} = 0.840$	200 standard reflections
8944 measured reflections	every 3 reflections
6182 independent reflections	intensity decay: 1%
5178 reflections with $I > 2\sigma(I)$	

Refinement

Refinement on F^2	Secondary atom site location: difference Fourier map
Least-squares matrix: full	Hydrogen site location: inferred from neighbouring sites
$R[F^2 > 2\sigma(F^2)] = 0.039$	H atoms treated by a mixture of independent and constrained refinement
$wR(F^2) = 0.109$	$w = 1/[\sigma^2(F_o^2) + (0.0559P)^2 + 0.6885P]$
$S = 1.03$	where $P = (F_o^2 + 2F_c^2)/3$
6182 reflections	$(\Delta/\sigma)_{\text{max}} = 0.001$
386 parameters	$\Delta\rho_{\text{max}} = 0.46 \text{ e \AA}^{-3}$
3 restraints	$\Delta\rho_{\text{min}} = -0.34 \text{ e \AA}^{-3}$
Primary atom site location: structure-invariant direct methods	Extinction correction: none

Special details

Geometry. All e.s.d.'s (except the e.s.d. in the dihedral angle between two l.s. planes) are estimated using the full covariance matrix. The cell e.s.d.'s are taken into account individually in the estimation of e.s.d.'s in distances, angles and torsion angles; correlations between e.s.d.'s in cell parameters are only used when they are defined by crystal symmetry. An approximate (isotropic) treatment of cell e.s.d.'s is used for estimating e.s.d.'s involving l.s. planes.

Refinement. Refinement of F^2 against ALL reflections. The weighted R -factor wR and goodness of fit S are based on F^2 , conventional R -factors R are based on F , with F set to zero for negative F^2 . The threshold expression of $F^2 > \sigma(F^2)$ is used only for calculating R -

factors(gt) etc. and is not relevant to the choice of reflections for refinement. R -factors based on F^2 are statistically about twice as large as those based on F , and R -factors based on ALL data will be even larger.

Fractional atomic coordinates and isotropic or equivalent isotropic displacement parameters (\AA^2)

	x	y	z	$U_{\text{iso}}^*/U_{\text{eq}}$
C1	0.1292 (3)	0.8840 (3)	0.4961 (3)	0.0615 (8)
H1A	0.0511	0.8886	0.4402	0.074*
H1B	0.2095	0.9486	0.5075	0.074*
C2	0.1004 (4)	0.9075 (3)	0.6045 (3)	0.0724 (10)
H2A	0.1822	0.9114	0.6623	0.087*
H2B	0.0798	0.9878	0.6267	0.087*
C3	-0.0192 (4)	0.8051 (4)	0.5925 (3)	0.0811 (11)
H3A	-0.0298	0.8188	0.6640	0.097*
H3B	-0.1035	0.8086	0.5422	0.097*
C4	0.0032 (3)	0.6775 (4)	0.5488 (3)	0.0757 (10)
H4A	0.0802	0.6703	0.6039	0.091*
H4B	-0.0783	0.6135	0.5363	0.091*
C5	0.0320 (3)	0.6546 (3)	0.4428 (3)	0.0630 (8)
H5A	-0.0489	0.6527	0.3853	0.076*
H5B	0.0505	0.5735	0.4198	0.076*
C6	0.1545 (3)	0.7559 (3)	0.4557 (2)	0.0450 (6)
H6	0.1607	0.7412	0.3819	0.054*
C7	0.2903 (2)	0.7493 (2)	0.52994 (18)	0.0344 (5)
C8	0.5875 (3)	0.8287 (3)	0.4789 (2)	0.0449 (6)
H8	0.5734	0.9075	0.5050	0.054*
C9	0.5912 (3)	0.7849 (3)	0.3745 (2)	0.0601 (8)
H9	0.5806	0.8332	0.3304	0.072*
C10	0.6110 (3)	0.6673 (3)	0.3351 (2)	0.0602 (8)
H10	0.6114	0.6346	0.2632	0.072*
C11	0.6299 (3)	0.5993 (3)	0.4021 (2)	0.0468 (6)
H11	0.6429	0.5198	0.3767	0.056*
C12	0.6293 (2)	0.6519 (2)	0.51007 (17)	0.0320 (4)
C13	0.7019 (2)	0.6277 (2)	0.69238 (19)	0.0367 (5)
C14	0.7804 (3)	0.5631 (3)	0.7447 (3)	0.0608 (8)
H14	0.7979	0.4917	0.7031	0.073*
C15	0.8314 (4)	0.6060 (4)	0.8583 (3)	0.0803 (11)
H15	0.8851	0.5649	0.8946	0.096*
C16	0.8021 (4)	0.7106 (4)	0.9178 (3)	0.0787 (11)
H16	0.8352	0.7411	0.9949	0.094*
C17	0.7240 (3)	0.7685 (3)	0.8619 (2)	0.0610 (8)
H17	0.7060	0.8400	0.9029	0.073*
C18	0.8081 (3)	1.0300 (3)	0.7532 (2)	0.0543 (7)
H18	0.8350	0.9632	0.7146	0.065*
C19	0.8960 (3)	1.1469 (3)	0.7940 (2)	0.0580 (7)
H19	0.9805	1.1598	0.7835	0.070*
C20	0.8562 (3)	1.2454 (3)	0.8512 (2)	0.0598 (8)
H20	0.9138	1.3267	0.8801	0.072*

supplementary materials

C21	0.7314 (3)	1.2231 (2)	0.8654 (2)	0.0532 (7)
H21	0.7030	1.2891	0.9036	0.064*
C22	0.6474 (2)	1.1005 (2)	0.82200 (19)	0.0389 (5)
C23	0.4434 (2)	0.9739 (2)	0.84199 (18)	0.0366 (5)
C24	0.3436 (3)	0.9918 (3)	0.8921 (2)	0.0487 (6)
H24	0.3325	1.0716	0.9202	0.058*
C25	0.2633 (3)	0.8919 (3)	0.8994 (2)	0.0569 (7)
H25	0.1964	0.9027	0.9317	0.068*
C26	0.2822 (3)	0.7736 (3)	0.8580 (2)	0.0558 (7)
H26	0.2298	0.7041	0.8634	0.067*
C27	0.3796 (3)	0.7623 (3)	0.8094 (2)	0.0488 (6)
H27	0.3922	0.6830	0.7817	0.059*
H6A	0.524 (2)	0.360 (2)	0.983 (3)	0.081 (13)*
H6B	0.386 (2)	0.322 (3)	0.921 (3)	0.087 (13)*
N1	0.60361 (18)	0.76244 (17)	0.54675 (15)	0.0325 (4)
N3	0.6709 (2)	0.72807 (19)	0.74978 (16)	0.0398 (4)
N4	0.6839 (2)	1.00475 (19)	0.76529 (17)	0.0429 (5)
N6	0.4594 (2)	0.85966 (18)	0.79898 (16)	0.0375 (4)
N7	0.7893 (3)	0.5522 (2)	0.1219 (2)	0.0611 (6)
O1	0.30686 (18)	0.64659 (15)	0.53325 (15)	0.0455 (4)
O2	0.38469 (16)	0.85182 (15)	0.58651 (13)	0.0378 (4)
O3	0.8755 (3)	0.5011 (3)	0.1033 (3)	0.1179 (12)
O4	0.8103 (3)	0.6659 (2)	0.1560 (2)	0.0860 (8)
O5	0.6740 (3)	0.4912 (3)	0.1109 (3)	0.1178 (12)
O6	0.4564 (4)	0.2978 (2)	0.9418 (3)	0.0855 (8)
N11	0.6563 (2)	0.58533 (19)	0.57844 (16)	0.0363 (4)
N12	0.5229 (2)	1.0789 (2)	0.83921 (19)	0.0437 (5)
Zn1	0.54528 (3)	0.81698 (2)	0.67867 (2)	0.03606 (10)
H11A	0.667 (3)	0.528 (2)	0.553 (2)	0.027 (7)*
H12	0.505 (3)	1.135 (3)	0.861 (2)	0.037 (8)*

Atomic displacement parameters (\AA^2)

	U^{11}	U^{22}	U^{33}	U^{12}	U^{13}	U^{23}
C1	0.0498 (16)	0.0601 (17)	0.083 (2)	0.0269 (14)	0.0102 (15)	0.0427 (16)
C2	0.066 (2)	0.067 (2)	0.073 (2)	0.0456 (17)	0.0105 (16)	0.0076 (16)
C3	0.056 (2)	0.121 (3)	0.085 (2)	0.048 (2)	0.0373 (18)	0.040 (2)
C4	0.0456 (17)	0.090 (2)	0.116 (3)	0.0254 (16)	0.0374 (19)	0.060 (2)
C5	0.0374 (14)	0.0568 (17)	0.075 (2)	0.0109 (13)	0.0036 (14)	0.0128 (15)
C6	0.0397 (13)	0.0597 (16)	0.0391 (13)	0.0209 (12)	0.0104 (10)	0.0218 (12)
C7	0.0345 (11)	0.0421 (12)	0.0335 (11)	0.0168 (10)	0.0169 (9)	0.0154 (10)
C8	0.0436 (13)	0.0501 (14)	0.0537 (15)	0.0196 (11)	0.0218 (12)	0.0279 (12)
C9	0.0623 (18)	0.086 (2)	0.0517 (16)	0.0263 (16)	0.0260 (14)	0.0439 (16)
C10	0.0665 (19)	0.084 (2)	0.0364 (14)	0.0240 (16)	0.0255 (13)	0.0226 (14)
C11	0.0501 (15)	0.0530 (15)	0.0358 (12)	0.0157 (12)	0.0206 (11)	0.0086 (11)
C12	0.0262 (10)	0.0358 (11)	0.0314 (11)	0.0059 (8)	0.0114 (9)	0.0088 (9)
C13	0.0381 (12)	0.0401 (12)	0.0372 (12)	0.0152 (10)	0.0171 (10)	0.0152 (10)
C14	0.076 (2)	0.0703 (19)	0.0535 (16)	0.0487 (17)	0.0255 (15)	0.0284 (15)

C15	0.097 (3)	0.107 (3)	0.0597 (19)	0.068 (2)	0.0225 (19)	0.045 (2)
C16	0.090 (3)	0.118 (3)	0.0367 (15)	0.062 (2)	0.0150 (16)	0.0287 (17)
C17	0.0690 (19)	0.083 (2)	0.0332 (13)	0.0451 (17)	0.0160 (13)	0.0129 (13)
C18	0.0391 (14)	0.0557 (16)	0.0552 (16)	0.0088 (12)	0.0171 (12)	0.0042 (13)
C19	0.0411 (14)	0.0645 (18)	0.0552 (16)	-0.0017 (13)	0.0155 (13)	0.0138 (14)
C20	0.0596 (18)	0.0477 (16)	0.0573 (17)	-0.0043 (13)	0.0121 (14)	0.0167 (14)
C21	0.0624 (17)	0.0370 (13)	0.0538 (16)	0.0108 (12)	0.0182 (14)	0.0115 (12)
C22	0.0408 (12)	0.0394 (12)	0.0345 (12)	0.0118 (10)	0.0108 (10)	0.0124 (10)
C23	0.0392 (12)	0.0414 (12)	0.0290 (11)	0.0167 (10)	0.0111 (9)	0.0101 (9)
C24	0.0515 (15)	0.0582 (16)	0.0423 (13)	0.0253 (13)	0.0236 (12)	0.0141 (12)
C25	0.0533 (16)	0.078 (2)	0.0512 (16)	0.0224 (15)	0.0314 (14)	0.0246 (15)
C26	0.0579 (17)	0.0620 (17)	0.0546 (16)	0.0104 (14)	0.0288 (14)	0.0260 (14)
C27	0.0596 (16)	0.0433 (14)	0.0465 (14)	0.0137 (12)	0.0241 (13)	0.0157 (11)
N1	0.0304 (9)	0.0378 (10)	0.0343 (9)	0.0121 (8)	0.0149 (8)	0.0155 (8)
N3	0.0423 (11)	0.0490 (11)	0.0309 (9)	0.0230 (9)	0.0135 (8)	0.0121 (9)
N4	0.0361 (10)	0.0399 (11)	0.0455 (11)	0.0080 (8)	0.0160 (9)	0.0054 (9)
N6	0.0414 (11)	0.0384 (10)	0.0350 (10)	0.0139 (8)	0.0172 (8)	0.0113 (8)
N7	0.0612 (16)	0.0498 (15)	0.0746 (17)	0.0120 (12)	0.0294 (14)	0.0227 (13)
O1	0.0478 (10)	0.0371 (9)	0.0546 (10)	0.0202 (8)	0.0181 (8)	0.0160 (8)
O2	0.0335 (8)	0.0392 (9)	0.0431 (9)	0.0148 (7)	0.0138 (7)	0.0152 (7)
O3	0.101 (2)	0.087 (2)	0.199 (4)	0.0436 (18)	0.093 (3)	0.051 (2)
O4	0.0831 (18)	0.0619 (15)	0.116 (2)	0.0114 (13)	0.0389 (16)	0.0373 (14)
O5	0.0797 (19)	0.0729 (18)	0.176 (3)	-0.0024 (15)	0.059 (2)	0.0110 (19)
O6	0.094 (2)	0.0605 (15)	0.097 (2)	0.0444 (16)	0.0289 (17)	0.0132 (14)
N11	0.0434 (11)	0.0309 (10)	0.0356 (10)	0.0146 (9)	0.0171 (9)	0.0081 (9)
N12	0.0512 (13)	0.0375 (11)	0.0473 (12)	0.0212 (10)	0.0235 (10)	0.0116 (10)
Zn1	0.03508 (15)	0.03867 (16)	0.03545 (15)	0.01457 (11)	0.01437 (11)	0.01066 (11)

Geometric parameters (Å, °)

C1—C6	1.518 (4)	C16—C17	1.356 (4)
C1—C2	1.529 (5)	C16—H16	0.9300
C1—H1A	0.9700	C17—N3	1.356 (3)
C1—H1B	0.9700	C17—H17	0.9300
C2—C3	1.511 (5)	C18—N4	1.351 (3)
C2—H2A	0.9700	C18—C19	1.357 (4)
C2—H2B	0.9700	C18—H18	0.9300
C3—C4	1.506 (5)	C19—C20	1.372 (4)
C3—H3A	0.9700	C19—H19	0.9300
C3—H3B	0.9700	C20—C21	1.367 (4)
C4—C5	1.497 (5)	C20—H20	0.9300
C4—H4A	0.9700	C21—C22	1.392 (4)
C4—H4B	0.9700	C21—H21	0.9300
C5—C6	1.519 (4)	C22—N4	1.326 (3)
C5—H5A	0.9700	C22—N12	1.383 (3)
C5—H5B	0.9700	C23—N6	1.337 (3)
C6—C7	1.527 (3)	C23—N12	1.373 (3)
C6—H6	0.9800	C23—C24	1.406 (3)
C7—O1	1.246 (3)	C24—C25	1.360 (4)

supplementary materials

C7—O2	1.272 (3)	C24—H24	0.9300
C8—N1	1.356 (3)	C25—C26	1.389 (4)
C8—C9	1.360 (4)	C25—H25	0.9300
C8—H8	0.9300	C26—C27	1.361 (4)
C9—C10	1.382 (4)	C26—H26	0.9300
C9—H9	0.9300	C27—N6	1.357 (3)
C10—C11	1.365 (4)	C27—H27	0.9300
C10—H10	0.9300	N7—O3	1.204 (4)
C11—C12	1.402 (3)	N7—O4	1.218 (3)
C11—H11	0.9300	N7—O5	1.239 (4)
C12—N1	1.332 (3)	Zn1—N1	1.9984 (18)
C12—N11	1.373 (3)	Zn1—N3	2.0192 (19)
C13—N3	1.337 (3)	Zn1—N4	2.166 (2)
C13—N11	1.376 (3)	Zn1—N6	2.0405 (19)
C13—C14	1.395 (3)	Zn1—O2	1.9803 (16)
C14—C15	1.370 (4)	O6—H6A	0.838 (10)
C14—H14	0.9300	O6—H6B	0.836 (10)
C15—C16	1.374 (5)	N11—H11A	0.70 (2)
C15—H15	0.9300	N12—H12	0.71 (3)
C6—C1—C2	110.8 (2)	N3—C17—C16	123.7 (3)
C6—C1—H1A	109.5	N3—C17—H17	118.2
C2—C1—H1A	109.5	C16—C17—H17	118.2
C6—C1—H1B	109.5	N4—C18—C19	124.1 (3)
C2—C1—H1B	109.5	N4—C18—H18	118.0
H1A—C1—H1B	108.1	C19—C18—H18	118.0
C3—C2—C1	111.4 (3)	C18—C19—C20	117.9 (3)
C3—C2—H2A	109.3	C18—C19—H19	121.1
C1—C2—H2A	109.3	C20—C19—H19	121.1
C3—C2—H2B	109.3	C21—C20—C19	119.6 (3)
C1—C2—H2B	109.3	C21—C20—H20	120.2
H2A—C2—H2B	108.0	C19—C20—H20	120.2
C4—C3—C2	111.1 (2)	C20—C21—C22	119.2 (3)
C4—C3—H3A	109.4	C20—C21—H21	120.4
C2—C3—H3A	109.4	C22—C21—H21	120.4
C4—C3—H3B	109.4	N4—C22—N12	119.7 (2)
C2—C3—H3B	109.4	N4—C22—C21	121.8 (2)
H3A—C3—H3B	108.0	N12—C22—C21	118.6 (2)
C5—C4—C3	112.1 (3)	N6—C23—N12	121.9 (2)
C5—C4—H4A	109.2	N6—C23—C24	121.3 (2)
C3—C4—H4A	109.2	N12—C23—C24	116.8 (2)
C5—C4—H4B	109.2	C25—C24—C23	119.6 (2)
C3—C4—H4B	109.2	C25—C24—H24	120.2
H4A—C4—H4B	107.9	C23—C24—H24	120.2
C4—C5—C6	111.6 (3)	C24—C25—C26	119.4 (2)
C4—C5—H5A	109.3	C24—C25—H25	120.3
C6—C5—H5A	109.3	C26—C25—H25	120.3
C4—C5—H5B	109.3	C27—C26—C25	118.0 (3)
C6—C5—H5B	109.3	C27—C26—H26	121.0
H5A—C5—H5B	108.0	C25—C26—H26	121.0

C1—C6—C5	109.8 (2)	N6—C27—C26	123.9 (3)
C1—C6—C7	112.4 (2)	N6—C27—H27	118.0
C5—C6—C7	112.2 (2)	C26—C27—H27	118.0
C1—C6—H6	107.4	C12—N1—C8	117.9 (2)
C5—C6—H6	107.4	C12—N1—Zn1	123.08 (14)
C7—C6—H6	107.4	C8—N1—Zn1	117.45 (16)
O1—C7—O2	122.0 (2)	C13—N3—C17	117.2 (2)
O1—C7—C6	120.5 (2)	C13—N3—Zn1	123.65 (15)
O2—C7—C6	117.4 (2)	C17—N3—Zn1	119.08 (17)
N1—C8—C9	122.9 (3)	C22—N4—C18	117.5 (2)
N1—C8—H8	118.5	C22—N4—Zn1	122.70 (16)
C9—C8—H8	118.5	C18—N4—Zn1	119.52 (17)
C8—C9—C10	118.7 (3)	C23—N6—C27	117.6 (2)
C8—C9—H9	120.6	C23—N6—Zn1	122.08 (15)
C10—C9—H9	120.6	C27—N6—Zn1	117.11 (16)
C11—C10—C9	119.7 (2)	O3—N7—O4	122.9 (3)
C11—C10—H10	120.1	O3—N7—O5	121.4 (3)
C9—C10—H10	120.1	O4—N7—O5	115.7 (3)
C10—C11—C12	118.5 (3)	C7—O2—Zn1	108.91 (14)
C10—C11—H11	120.7	H6A—O6—H6B	109.5 (17)
C12—C11—H11	120.7	C12—N11—C13	129.1 (2)
N1—C12—N11	120.21 (19)	C12—N11—H11A	113 (2)
N1—C12—C11	122.0 (2)	C13—N11—H11A	115 (2)
N11—C12—C11	117.8 (2)	C23—N12—C22	131.3 (2)
N3—C13—N11	120.1 (2)	C23—N12—H12	114 (2)
N3—C13—C14	121.9 (2)	C22—N12—H12	113 (2)
N11—C13—C14	118.0 (2)	O2—Zn1—N1	89.03 (7)
C15—C14—C13	119.2 (3)	O2—Zn1—N3	162.61 (8)
C15—C14—H14	120.4	N1—Zn1—N3	88.38 (7)
C13—C14—H14	120.4	O2—Zn1—N6	85.24 (7)
C14—C15—C16	119.1 (3)	N1—Zn1—N6	172.28 (8)
C14—C15—H15	120.4	N3—Zn1—N6	95.55 (8)
C16—C15—H15	120.4	O2—Zn1—N4	100.52 (8)
C17—C16—C15	118.8 (3)	N1—Zn1—N4	99.74 (8)
C17—C16—H16	120.6	N3—Zn1—N4	96.86 (9)
C15—C16—H16	120.6	N6—Zn1—N4	86.42 (8)

Hydrogen-bond geometry (\AA , $^\circ$)

$D-H\cdots A$	$D-H$	$H\cdots A$	$D\cdots A$	$D-H\cdots A$
N12—H12 \cdots O6 ⁱ	0.71 (3)	2.10 (3)	2.806 (3)	174 (3)
N11—H11A \cdots O1 ⁱⁱ	0.70 (2)	2.11 (3)	2.810 (3)	177 (3)
O6—H6B \cdots N7 ⁱⁱ	0.836 (10)	2.586 (14)	3.406 (4)	167 (3)
O6—H6B \cdots O5 ⁱⁱ	0.836 (10)	2.48 (3)	3.164 (4)	139 (3)
O6—H6B \cdots O4 ⁱⁱ	0.836 (10)	2.088 (12)	2.904 (4)	165 (3)
O6—H6A \cdots O5 ⁱⁱⁱ	0.838 (10)	1.971 (15)	2.787 (4)	164 (4)

Symmetry codes: (i) $x, y+1, z$; (ii) $-x+1, -y+1, -z+1$; (iii) $x, y, z+1$.

Fig. 1

