

Acta Crystallographica Section E

## Structure Reports

Online

ISSN 1600-5368

# Diaquabis(cyclohexanecarboxylato)-zinc(II) monohydrate

Yue-Wu Zhang, Li-Jun Wang, Jian Hou and Qing-Fu Zeng\*

 Engineering Research Center for Clean Production of Textile Dyeing and Printing, Ministry of Education, Wuhan 430073, People's Republic of China  
 Correspondence e-mail: qfzeng@wuse.edu.cn

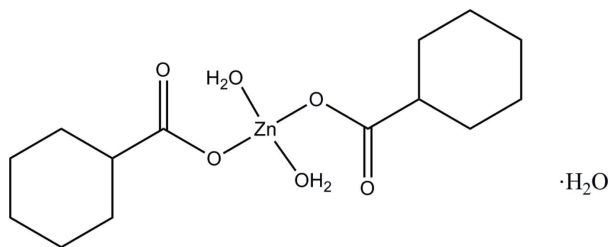
Received 20 August 2009; accepted 22 August 2009

 Key indicators: single-crystal X-ray study;  $T = 296$  K; mean  $\sigma(\text{C}-\text{C}) = 0.007$  Å;  $R$  factor = 0.054;  $wR$  factor = 0.158; data-to-parameter ratio = 15.4.

In the title compound,  $[\text{Zn}(\text{C}_7\text{H}_{11}\text{O}_2)_2(\text{H}_2\text{O})_2]\cdot\text{H}_2\text{O}$ , the  $\text{Zn}^{\text{II}}$  atom (site symmetry  $\bar{1}$ ) is four-coordinated by two O atoms from the cyclohexanecarboxylate anions and two O atoms from the water molecules, forming a slightly distorted square-planar coordination. The O atom of the uncoordinated water molecule lies on a crystallographic twofold rotation axis. In the crystal, the components are linked by  $\text{O}-\text{H}\cdots\text{O}$  hydrogen bonds, forming a three-dimensional network.

## Related literature

For background, see: Cheng *et al.* (2006). For reference structural data, see: Allen *et al.* (1987).



## Experimental

### Crystal data

$[\text{Zn}(\text{C}_7\text{H}_{11}\text{O}_2)_2(\text{H}_2\text{O})_2]\cdot\text{H}_2\text{O}$   
 $M_r = 373.75$   
 Monoclinic,  $P2_1/c$   
 $a = 15.9045$  (16) Å  
 $b = 4.9295$  (6) Å  
 $c = 11.5335$  (16) Å  
 $\beta = 91.585$  (6)°

$V = 903.89$  (19) Å<sup>3</sup>  
 $Z = 2$   
 Mo  $K\alpha$  radiation  
 $\mu = 1.39$  mm<sup>-1</sup>  
 $T = 296$  K  
 $0.28 \times 0.25 \times 0.22$  mm

### Data collection

Enraf–Nonius CAD-4 diffractometer  
 Absorption correction:  $\psi$  scan (North *et al.*, 1968)  
 $T_{\text{min}} = 0.698$ ,  $T_{\text{max}} = 0.750$   
 4764 measured reflections

1752 independent reflections  
 1436 reflections with  $I > 2\sigma(I)$   
 $R_{\text{int}} = 0.032$   
 200 standard reflections every 3 reflections  
 intensity decay: 1%

### Refinement

$R[F^2 > 2\sigma(F^2)] = 0.054$   
 $wR(F^2) = 0.158$   
 $S = 1.07$   
 1752 reflections  
 114 parameters  
 4 restraints

H atoms treated by a mixture of independent and constrained refinement  
 $\Delta\rho_{\text{max}} = 1.00$  e Å<sup>-3</sup>  
 $\Delta\rho_{\text{min}} = -0.37$  e Å<sup>-3</sup>

**Table 1**

Selected bond lengths (Å).

Zn1—O2	1.961 (3)	Zn1—O3	1.977 (4)
--------	-----------	--------	-----------

**Table 2**

Hydrogen-bond geometry (Å, °).

$D-H\cdots A$	$D-H$	$H\cdots A$	$D\cdots A$	$D-H\cdots A$
O7—H7 $\cdots$ O1	0.834 (10)	1.99 (3)	2.699 (4)	142 (5)
O3—H3D $\cdots$ O1 <sup>i</sup>	0.846 (10)	2.53 (7)	3.132 (6)	129 (8)
O3—H3C $\cdots$ O7 <sup>ii</sup>	0.853 (10)	2.17 (2)	2.997 (5)	164 (6)

Symmetry codes: (i)  $x, -y + 1, z - \frac{1}{2}$ ; (ii)  $-x + 1, -y + 2, -z$ .

Data collection: *CAD-4 Software* (Enraf–Nonius, 1989); cell refinement: *CAD-4 Software*; data reduction: *XCAD4* (Harms & Wocadlo, 1995); program(s) used to solve structure: *SHELXS97* (Sheldrick, 2008); program(s) used to refine structure: *SHELXL97* (Sheldrick, 2008); molecular graphics: *SHELXTL* (Sheldrick, 2008); software used to prepare material for publication: *SHELXTL*.

The project was supported by the Scientific Research Foundation for Returned Overseas Chinese Scholars, State Education Ministry, Educational Commission of Hubei Province (D20091703) and the Natural Science Foundation of Hubei Province (2008CDB038).

Supplementary data and figures for this paper are available from the IUCr electronic archives (Reference: HB5057).

## References

- Allen, F. H., Kennard, O., Watson, D. G., Brammer, L., Orpen, A. G. & Taylor, R. (1987). *J. Chem. Soc. Perkin Trans. 2*, pp. S1–19.  
 Cheng, K., Zhu, H.-L. & Li, Y.-G. (2006). *Z. Anorg. Allg. Chem.* **632**, 2326–2330.  
 Enraf–Nonius (1989). *CAD-4 Software*. Enraf–Nonius, Delft, The Netherlands.  
 Harms, K. & Wocadlo, S. (1995). *XCAD4*. University of Marburg, Germany.  
 North, A. C. T., Phillips, D. C. & Mathews, F. S. (1968). *Acta Cryst.* **A24**, 351–359.  
 Sheldrick, G. M. (2008). *Acta Cryst.* **A64**, 112–122.

## supporting information

*Acta Cryst.* (2009). E65, m1147 [doi:10.1107/S1600536809033479]

## Diaquabis(cyclohexanecarboxylato)zinc(II) monohydrate

Yue-Wu Zhang, Li-Jun Wang, Jian Hou and Qing-Fu Zeng

### S1. Comment

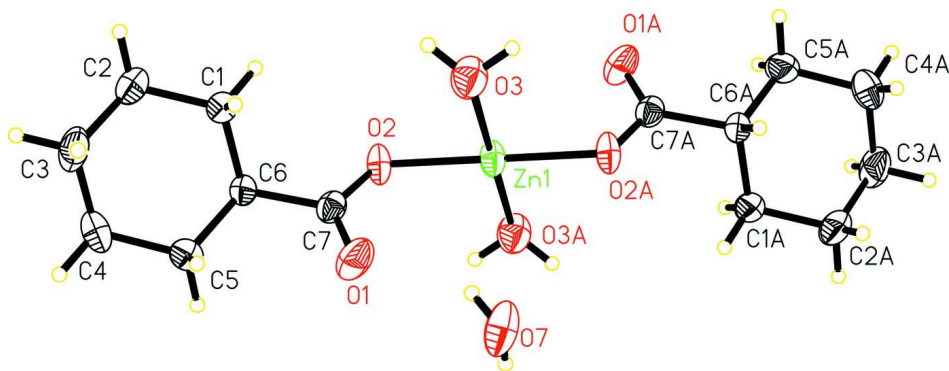
There has been much research interest in acid metal complexes due to their molecular architectures and biological activities (e.g. Cheng *et al.*, 2006). In this work, we report here the crystal structure of the title compound, (I). In (I), all bond lengths are within normal ranges (Allen *et al.*, 1987) (Fig. 1). The Zn<sup>II</sup> atom is four-coordinated by two O atoms from the cyclohexanecarboxylate and two O atoms from the water molecules, forming a slightly distorted square-planar coordination (Table 1). In the crystal, O—H···O hydrogen bonds (Table 2) link the components.

### S2. Experimental

A mixture of cyclohexanecarboxylic acid (256 mg, 2 mmol) and ZnNO<sub>3</sub>·6H<sub>2</sub>O (1 mmol, 297 mg) in methanol (10 ml) was stirred for 2 h. After keeping the filtrate in air for 6 d, colourless blocks of (I) were formed.

### S3. Refinement

The O-bound H atoms were located in a difference map and their positions were refined with the restraint O—H = 0.82 (1) Å. The other H atoms were positioned geometrically (C—H = 0.97–0.98 Å) and refined as riding, with  $U_{\text{iso}}(\text{H}) = 1.2U_{\text{eq}}(\text{carrier})$ .



**Figure 1**

The molecular structure of (I) showing 30% probability displacement ellipsoids. Atoms with the suffix A are generated by the symmetry code (1-x, 1-y, -z).

### Diaquabis(cyclohexanecarboxylato)zinc(II) monohydrate

#### Crystal data

[Zn(C<sub>7</sub>H<sub>11</sub>O<sub>2</sub>)<sub>2</sub>(H<sub>2</sub>O)<sub>2</sub>].H<sub>2</sub>O

$M_r = 373.75$

Monoclinic, *P2*/*c*

Hall symbol: -*P* 2yc

$a = 15.9045$  (16) Å

$b = 4.9295$  (6) Å

$c = 11.5335 (16) \text{ \AA}$   
 $\beta = 91.585 (6)^\circ$   
 $V = 903.89 (19) \text{ \AA}^3$   
 $Z = 2$   
 $F(000) = 396$   
 $D_x = 1.373 \text{ Mg m}^{-3}$   
 Mo  $K\alpha$  radiation,  $\lambda = 0.71073 \text{ \AA}$

Cell parameters from 25 reflections

$\theta = 9\text{--}12^\circ$   
 $\mu = 1.39 \text{ mm}^{-1}$   
 $T = 296 \text{ K}$   
 Block, colorless  
 $0.28 \times 0.25 \times 0.22 \text{ mm}$

*Data collection*

Enraf–Nonius CAD-4  
 diffractometer  
 Radiation source: fine-focus sealed tube  
 Graphite monochromator  
 $\omega/2\theta$  scans  
 Absorption correction:  $\psi$  scan  
 (North *et al.*, 1968)  
 $T_{\min} = 0.698$ ,  $T_{\max} = 0.750$   
 4764 measured reflections

1752 independent reflections  
 1436 reflections with  $I > 2\sigma(I)$   
 $R_{\text{int}} = 0.032$   
 $\theta_{\max} = 26.0^\circ$ ,  $\theta_{\min} = 2.6^\circ$   
 $h = -18 \rightarrow 19$   
 $k = -6 \rightarrow 6$   
 $l = -12 \rightarrow 14$   
 200 standard reflections every 3 reflections  
 intensity decay: 1%

*Refinement*

Refinement on  $F^2$   
 Least-squares matrix: full  
 $R[F^2 > 2\sigma(F^2)] = 0.054$   
 $wR(F^2) = 0.158$   
 $S = 1.07$   
 1752 reflections  
 114 parameters  
 4 restraints  
 Primary atom site location: structure-invariant  
 direct methods

Secondary atom site location: difference Fourier  
 map  
 Hydrogen site location: inferred from  
 neighbouring sites  
 H atoms treated by a mixture of independent  
 and constrained refinement  
 $w = 1/[\sigma^2(F_o^2) + (0.0809P)^2 + 1.216P]$   
 where  $P = (F_o^2 + 2F_c^2)/3$   
 $(\Delta/\sigma)_{\max} = 0.003$   
 $\Delta\rho_{\max} = 1.00 \text{ e \AA}^{-3}$   
 $\Delta\rho_{\min} = -0.37 \text{ e \AA}^{-3}$

*Special details*

**Geometry.** All e.s.d.'s (except the e.s.d. in the dihedral angle between two l.s. planes) are estimated using the full covariance matrix. The cell e.s.d.'s are taken into account individually in the estimation of e.s.d.'s in distances, angles and torsion angles; correlations between e.s.d.'s in cell parameters are only used when they are defined by crystal symmetry. An approximate (isotropic) treatment of cell e.s.d.'s is used for estimating e.s.d.'s involving l.s. planes.

**Refinement.** Refinement of  $F^2$  against ALL reflections. The weighted  $R$ -factor  $wR$  and goodness of fit  $S$  are based on  $F^2$ , conventional  $R$ -factors  $R$  are based on  $F$ , with  $F$  set to zero for negative  $F^2$ . The threshold expression of  $F^2 > \sigma(F^2)$  is used only for calculating  $R$ -factors(gt) *etc.* and is not relevant to the choice of reflections for refinement.  $R$ -factors based on  $F^2$  are statistically about twice as large as those based on  $F$ , and  $R$ -factors based on ALL data will be even larger.

*Fractional atomic coordinates and isotropic or equivalent isotropic displacement parameters ( $\text{\AA}^2$ )*

	$x$	$y$	$z$	$U_{\text{iso}}^*/U_{\text{eq}}$
C1	0.2156 (3)	0.3294 (12)	-0.0060 (4)	0.0586 (12)
H1A	0.2463	0.2824	-0.0747	0.070*
H1B	0.2126	0.5256	-0.0017	0.070*
C2	0.1273 (3)	0.2162 (13)	-0.0177 (4)	0.0711 (14)
H2A	0.0988	0.2966	-0.0847	0.085*
H2B	0.1301	0.0218	-0.0300	0.085*
C3	0.0779 (3)	0.2734 (13)	0.0889 (5)	0.0743 (15)
H3A	0.0709	0.4676	0.0980	0.089*

H3B	0.0226	0.1917	0.0810	0.089*
C4	0.1236 (3)	0.1592 (16)	0.1934 (5)	0.0832 (18)
H4A	0.1264	-0.0367	0.1864	0.100*
H4B	0.0925	0.2017	0.2622	0.100*
C5	0.2124 (3)	0.2720 (13)	0.2071 (4)	0.0661 (14)
H5A	0.2095	0.4653	0.2221	0.079*
H5B	0.2405	0.1867	0.2733	0.079*
C6	0.2630 (2)	0.2234 (9)	0.0999 (3)	0.0427 (9)
H6	0.2708	0.0274	0.0908	0.051*
C7	0.3485 (2)	0.3560 (8)	0.1063 (4)	0.0455 (9)
H7	0.475 (3)	0.722 (8)	0.205 (3)	0.058 (14)*
O1	0.3660 (3)	0.5302 (7)	0.1802 (4)	0.0755 (11)
O2	0.39946 (17)	0.2822 (6)	0.0283 (3)	0.0549 (8)
O3	0.4282 (3)	0.7551 (8)	-0.0904 (4)	0.0718 (10)
O7	0.5000	0.8302 (10)	0.2500	0.0775 (16)
Zn1	0.5000	0.5000	0.0000	0.0492 (3)
H3D	0.384 (3)	0.71 (2)	-0.127 (5)	0.18 (5)*
H3C	0.457 (3)	0.852 (11)	-0.136 (4)	0.076 (18)*

*Atomic displacement parameters (Å<sup>2</sup>)*

	$U^{11}$	$U^{22}$	$U^{33}$	$U^{12}$	$U^{13}$	$U^{23}$
C1	0.045 (2)	0.085 (4)	0.046 (2)	-0.007 (2)	-0.0019 (18)	0.005 (2)
C2	0.048 (3)	0.097 (4)	0.067 (3)	-0.012 (3)	-0.011 (2)	-0.006 (3)
C3	0.037 (2)	0.094 (4)	0.092 (4)	-0.003 (2)	0.000 (2)	-0.010 (3)
C4	0.057 (3)	0.120 (5)	0.075 (3)	-0.017 (3)	0.026 (3)	0.004 (4)
C5	0.053 (3)	0.101 (4)	0.045 (2)	-0.002 (3)	0.005 (2)	0.002 (2)
C6	0.0374 (19)	0.046 (2)	0.045 (2)	-0.0065 (16)	0.0017 (16)	-0.0002 (17)
C7	0.041 (2)	0.041 (2)	0.054 (2)	-0.0016 (17)	-0.0066 (18)	0.0067 (19)
O1	0.065 (2)	0.074 (3)	0.086 (3)	-0.0155 (18)	-0.0144 (19)	-0.0217 (19)
O2	0.0323 (14)	0.0504 (17)	0.083 (2)	-0.0060 (12)	0.0125 (14)	0.0045 (15)
O3	0.060 (2)	0.066 (2)	0.089 (3)	-0.0020 (18)	-0.004 (2)	0.012 (2)
O7	0.047 (3)	0.041 (3)	0.143 (5)	0.000	-0.008 (3)	0.000
Zn1	0.0317 (4)	0.0478 (4)	0.0684 (5)	-0.0007 (3)	0.0066 (3)	0.0097 (3)

*Geometric parameters (Å, °)*

C1—C6	1.511 (6)	C5—H5A	0.9700
C1—C2	1.513 (6)	C5—H5B	0.9700
C1—H1A	0.9700	C6—C7	1.509 (5)
C1—H1B	0.9700	C6—H6	0.9800
C2—C3	1.503 (7)	C7—O1	1.236 (5)
C2—H2A	0.9700	C7—O2	1.281 (5)
C2—H2B	0.9700	Zn1—O2	1.961 (3)
C3—C4	1.500 (8)	Zn1—O3	1.977 (4)
C3—H3A	0.9700	O3—H3D	0.846 (10)
C3—H3B	0.9700	O3—H3C	0.853 (10)
C4—C5	1.521 (7)	O7—H7	0.834 (10)

C4—H4A	0.9700	Zn1—O2 <sup>i</sup>	1.961 (3)
C4—H4B	0.9700	Zn1—O3 <sup>i</sup>	1.977 (4)
C5—C6	1.513 (6)		
C6—C1—C2	112.6 (4)	C6—C5—H5A	109.3
C6—C1—H1A	109.1	C4—C5—H5A	109.3
C2—C1—H1A	109.1	C6—C5—H5B	109.3
C6—C1—H1B	109.1	C4—C5—H5B	109.3
C2—C1—H1B	109.1	H5A—C5—H5B	107.9
H1A—C1—H1B	107.8	C7—C6—C1	108.6 (3)
C3—C2—C1	111.3 (4)	C7—C6—C5	113.0 (4)
C3—C2—H2A	109.4	C1—C6—C5	110.0 (4)
C1—C2—H2A	109.4	C7—C6—H6	108.4
C3—C2—H2B	109.4	C1—C6—H6	108.4
C1—C2—H2B	109.4	C5—C6—H6	108.4
H2A—C2—H2B	108.0	O1—C7—O2	123.1 (4)
C4—C3—C2	109.5 (4)	O1—C7—C6	121.4 (4)
C4—C3—H3A	109.8	O2—C7—C6	115.5 (4)
C2—C3—H3A	109.8	C7—O2—Zn1	119.8 (3)
C4—C3—H3B	109.8	Zn1—O3—H3D	123 (6)
C2—C3—H3B	109.8	Zn1—O3—H3C	112 (4)
H3A—C3—H3B	108.2	H3D—O3—H3C	107.5 (17)
C3—C4—C5	112.0 (5)	O2—Zn1—O2 <sup>i</sup>	180.0
C3—C4—H4A	109.2	O2—Zn1—O3	88.54 (15)
C5—C4—H4A	109.2	O2 <sup>i</sup> —Zn1—O3	91.46 (15)
C3—C4—H4B	109.2	O2—Zn1—O3 <sup>i</sup>	91.46 (15)
C5—C4—H4B	109.2	O2 <sup>i</sup> —Zn1—O3 <sup>i</sup>	88.54 (15)
H4A—C4—H4B	107.9	O3—Zn1—O3 <sup>i</sup>	180.0
C6—C5—C4	111.7 (4)		
C6—C1—C2—C3	56.4 (6)	C5—C6—C7—O1	-14.3 (6)
C1—C2—C3—C4	-56.7 (7)	C1—C6—C7—O2	-69.8 (5)
C2—C3—C4—C5	57.1 (7)	C5—C6—C7—O2	167.9 (4)
C3—C4—C5—C6	-56.2 (7)	O1—C7—O2—Zn1	-13.6 (6)
C2—C1—C6—C7	-177.8 (4)	C6—C7—O2—Zn1	164.1 (3)
C2—C1—C6—C5	-53.7 (6)	C7—O2—Zn1—O2 <sup>i</sup>	115 (24)
C4—C5—C6—C7	174.6 (5)	C7—O2—Zn1—O3	-79.1 (3)
C4—C5—C6—C1	53.1 (6)	C7—O2—Zn1—O3 <sup>i</sup>	100.9 (3)
C1—C6—C7—O1	107.9 (5)		

Symmetry code: (i)  $-x+1, -y+1, -z$ .

#### Hydrogen-bond geometry ( $\text{\AA}$ , $^\circ$ )

$D-H\cdots A$	$D-H$	$H\cdots A$	$D\cdots A$	$D-H\cdots A$
O7—H7 $\cdots$ O1	0.83 (1)	1.99 (3)	2.699 (4)	142 (5)

---

O3—H3D···O1 <sup>ii</sup>	0.85 (1)	2.53 (7)	3.132 (6)	129 (8)
O3—H3C···O7 <sup>iii</sup>	0.85 (1)	2.17 (2)	2.997 (5)	164 (6)

---

Symmetry codes: (ii)  $x, -y+1, z-1/2$ ; (iii)  $-x+1, -y+2, -z$ .