

Acta Crystallographica Section E

## Structure Reports

Online

ISSN 1600-5368

## 4-Methoxyanilinium bromide

Xue-qun Fu

Ordered Matter Science Research Center, Southeast University, Nanjing 210096, People's Republic of China

Correspondence e-mail: fuxuequn222@163.com

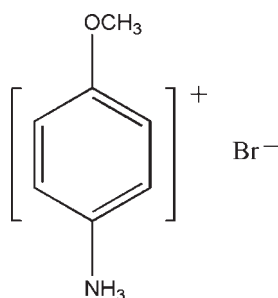
Received 5 August 2009; accepted 31 August 2009

Key indicators: single-crystal X-ray study;  $T = 298$  K; mean  $\sigma(\text{C}-\text{C}) = 0.006$  Å;  $R$  factor = 0.043;  $wR$  factor = 0.100; data-to-parameter ratio = 21.3.

The title compound,  $\text{C}_7\text{H}_{10}\text{NO}^+\cdot\text{Br}^-$ , consists of almost planar 4-methoxyanilinium cations, wherein the O atom lies 0.049 (3) Å out of the plane formed by the non-H atoms, and a  $\text{Br}^-$  anion. Strong  $\text{N}-\text{H}\cdots\text{Br}$  and  $\text{N}-\text{H}\cdots(\text{Br},\text{Br})$  hydrogen bonding contributes to the stability of the crystal structure and links the cations and anions into a three-dimensional network.

## Related literature

For background to dielectric-ferroelectric materials, see: Hang *et al.* (2009); Li *et al.* (2008). For related structures, see: Tan *et al.* (2006); Soumhi *et al.* (2006); Ben Amor *et al.* (1995).



## Experimental

## Crystal data

 $\text{C}_7\text{H}_{10}\text{NO}^+\cdot\text{Br}^-$   
 $M_r = 204.07$ 

 Orthorhombic,  $Pbca$   
 $a = 8.9779$  (18) Å

 $b = 8.6978$  (17) Å  
 $c = 22.132$  (4) Å  
 $V = 1728.2$  (6) Å<sup>3</sup>  
 $Z = 8$ 

 Mo  $K\alpha$  radiation  
 $\mu = 4.69$  mm<sup>-1</sup>  
 $T = 298$  K  
 $0.20 \times 0.20 \times 0.20$  mm

## Data collection

 Rigaku SCXmini diffractometer  
 Absorption correction: multi-scan  
 (*CrystalClear*; Rigaku, 2005)  
 $T_{\min} = 0.391$ ,  $T_{\max} = 0.391$ 

 16334 measured reflections  
 1985 independent reflections  
 1276 reflections with  $I > 2\sigma(I)$   
 $R_{\text{int}} = 0.075$ 

## Refinement

 $R[F^2 > 2\sigma(F^2)] = 0.043$   
 $wR(F^2) = 0.100$   
 $S = 1.12$   
 1985 reflections

 93 parameters  
 H-atom parameters constrained  
 $\Delta\rho_{\text{max}} = 0.39$  e Å<sup>-3</sup>  
 $\Delta\rho_{\text{min}} = -0.33$  e Å<sup>-3</sup>
**Table 1**  
 Hydrogen-bond geometry (Å, °).

$D-\text{H}\cdots A$	$D-\text{H}$	$\text{H}\cdots A$	$D\cdots A$	$D-\text{H}\cdots A$
$\text{N1}-\text{H1A}\cdots\text{Br1}$	0.89	2.52	3.409 (3)	177
$\text{N1}-\text{H1B}\cdots\text{Br1}^{\text{i}}$	0.89	2.55	3.314 (3)	145
$\text{N1}-\text{H1B}\cdots\text{Br1}^{\text{ii}}$	0.89	3.00	3.430 (3)	112
$\text{N1}-\text{H1C}\cdots\text{Br1}^{\text{iii}}$	0.89	2.57	3.300 (3)	140

 Symmetry codes: (i)  $-x, -y + 1, -z$ ; (ii)  $x - \frac{1}{2}, -y + \frac{1}{2}, -z$ ; (iii)  $-x + \frac{1}{2}, y - \frac{1}{2}, z$ .

Data collection: *CrystalClear* (Rigaku, 2005); cell refinement: *CrystalClear*; data reduction: *CrystalClear*; program(s) used to solve structure: *SHELXS97* (Sheldrick, 2008); program(s) used to refine structure: *SHELXL97* (Sheldrick, 2008); molecular graphics: *SHELXTL* (Sheldrick, 2008); software used to prepare material for publication: *PRPKAPPA* (Ferguson, 1999).

The author is grateful to the starter fund of Southeast University for financial support to buy the X-ray diffractometer.

Supplementary data and figures for this paper are available from the IUCr electronic archives (Reference: PV2194).

## References

- Ben Amor, F., Soumhi, E. H., Ould Abdellahi, M. & Jouini, T. (1995). *Acta Cryst.* **C51**, 933–9352.  
 Ferguson, G. (1999). *PRPKAPPA*. University of Guelph, Canada.  
 Hang, T., Fu, D. W., Ye, Q. & Xiong, R. G. (2009). *Cryst. Growth Des.* **9**, 2026–2029.  
 Li, X. Z., Qu, Z. R. & Xiong, R. G. (2008). *Chin. J. Chem.* **11**, 1959–1962.  
 Rigaku (2005). *CrystalClear*. Rigaku Corporation, Tokyo, Japan.  
 Sheldrick, G. M. (2008). *Acta Cryst.* **A64**, 112–122.  
 Soumhi, E. H., Saadoun, I. & Driss, A. (2006). *Acta Cryst.* **E62**, o212–o214.  
 Tan, T.-F., Han, J., Pang, M.-L., Song, H.-B., Ma, Y.-X. & Mang, J.-B. (2006). *Cryst. Growth Des.* **6**, 1186–1193.

## supporting information

*Acta Cryst.* (2009). E65, o2344 [doi:10.1107/S160053680903503X]

## 4-Methoxyanilinium bromide

Xue-qun Fu

### S1. Comment

This study is a part of systematic investigation of dielectric-ferroelectric materials, including organic ligands (Li *et al.*, 2008), metal-organic coordination compounds (Hang *et al.*, 2009) and organic-inorganic hybrids. The title compound, 4-methoxyanilinium bromide, (I), has no dielectric disuniform from 80 K to 450 K, (m.p. 458–459 K). In this article, the crystal structure of (I) has been presented.

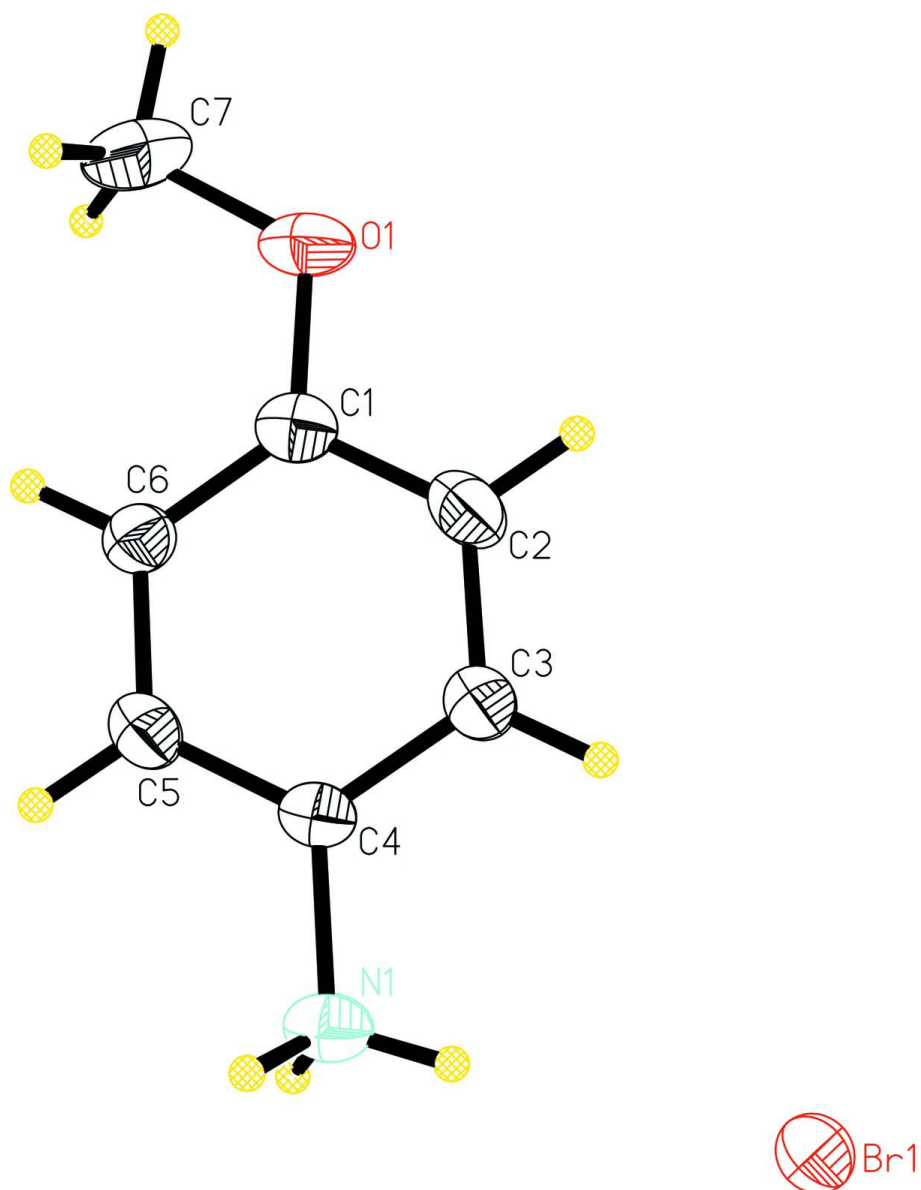
The asymmetric unit of the title compound is built up from an almost planar 4-methoxybenzenamine cation wherein O1 lies 0.049 (3) Å out of the plane formed by its non-hydrogen atoms and a Br<sup>-</sup> anion (Fig. 1). The strong N—H···Br hydrogen bonding (N···Br distances 3.300 (3)–3.430 (3) Å) contribute to the stability of the crystal structure and lead the cations and anions to tridimensional network (Fig 2). The crystal structures containing 4-methoxybenzenamine cation have been reported (Tan *et al.*, 2006; Soumhi *et al.*, 2006; Ben Amor *et al.*, 1995).

### S2. Experimental

Single crystals of 4-methoxyanilinium bromide were prepared by slow evaporation at room temperature of an ethanol solution of 4-methoxybenzenamine and hydrobromic acid.

### S3. Refinement

Positional parameters of all the H atoms were calculated geometrically and were allowed to ride on the C atoms to which they are bonded, with  $U_{\text{iso}}(\text{H}) = 1.2U_{\text{eq}}(\text{C})$ .

**Figure 1**

The molecular structure of the title compound, with the atomic numbering scheme. Displacement ellipsoids are drawn at 30% probability level.

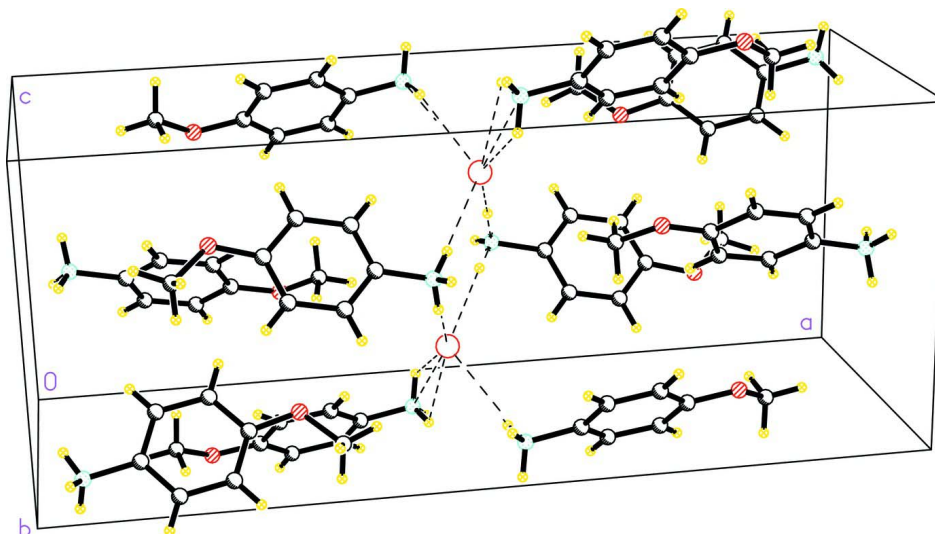


Figure 2

A view of the packing of the title compound; dashed lines indicate hydrogen bonds.

#### 4-Methoxyanilinium bromide

##### Crystal data

$C_7H_{10}NO^+Br^-$

$M_r = 204.07$

Orthorhombic, *Pbca*

Hall symbol: -P 2ac 2ab

$a = 8.9779$  (18) Å

$b = 8.6978$  (17) Å

$c = 22.132$  (4) Å

$V = 1728.2$  (6) Å<sup>3</sup>

$Z = 8$

$F(000) = 816$

$D_x = 1.569$  Mg m<sup>-3</sup>

Mo  $K\alpha$  radiation,  $\lambda = 0.71073$  Å

Cell parameters from 6139 reflections

$\theta = 3.3$ – $27.7^\circ$

$\mu = 4.69$  mm<sup>-1</sup>

$T = 298$  K

Prism, colourless

$0.20 \times 0.20 \times 0.20$  mm

##### Data collection

Rigaku SCXmini  
diffractometer

Radiation source: fine-focus sealed tube

Graphite monochromator

Detector resolution: 13.6612 pixels mm<sup>-1</sup>

$\omega$  scans

Absorption correction: multi-scan  
(*CrystalClear*; Rigaku, 2005)

$T_{\min} = 0.391$ ,  $T_{\max} = 0.391$

16334 measured reflections

1985 independent reflections

1276 reflections with  $I > 2\sigma(I)$

$R_{\text{int}} = 0.075$

$\theta_{\max} = 27.5^\circ$ ,  $\theta_{\min} = 3.4^\circ$

$h = -11 \rightarrow 11$

$k = -11 \rightarrow 11$

$l = -28 \rightarrow 28$

##### Refinement

Refinement on  $F^2$

Least-squares matrix: full

$R[F^2 > 2\sigma(F^2)] = 0.043$

$wR(F^2) = 0.100$

$S = 1.12$

1985 reflections

93 parameters

0 restraints

Primary atom site location: structure-invariant  
direct methods

Secondary atom site location: difference Fourier  
map

Hydrogen site location: inferred from  
neighbouring sites

H-atom parameters constrained

$w = 1/[\sigma^2(F_o^2) + (0.0263P)^2 + 1.3429P]$

where  $P = (F_o^2 + 2F_c^2)/3$

$$(\Delta/\sigma)_{\max} = 0.001$$

$$\Delta\rho_{\max} = 0.39 \text{ e } \text{\AA}^{-3}$$

$$\Delta\rho_{\min} = -0.33 \text{ e } \text{\AA}^{-3}$$

Extinction correction: *SHELXL97* (Sheldrick, 2008),  $F_c^* = kFc[1 + 0.001xFc^2\lambda^3/\sin(2\theta)]^{-1/4}$   
 Extinction coefficient: 0.0232 (9)

*Special details*

**Geometry.** All esds (except the esd in the dihedral angle between two l.s. planes) are estimated using the full covariance matrix. The cell esds are taken into account individually in the estimation of esds in distances, angles and torsion angles; correlations between esds in cell parameters are only used when they are defined by crystal symmetry. An approximate (isotropic) treatment of cell esds is used for estimating esds involving l.s. planes.

**Refinement.** Refinement of  $F^2$  against ALL reflections. The weighted  $R$ -factor  $wR$  and goodness of fit  $S$  are based on  $F^2$ , conventional  $R$ -factors  $R$  are based on  $F$ , with  $F$  set to zero for negative  $F^2$ . The threshold expression of  $F^2 > \sigma(F^2)$  is used only for calculating  $R$ -factors(gt) *etc.* and is not relevant to the choice of reflections for refinement.  $R$ -factors based on  $F^2$  are statistically about twice as large as those based on  $F$ , and  $R$ -factors based on ALL data will be even larger.

*Fractional atomic coordinates and isotropic or equivalent isotropic displacement parameters ( $\text{\AA}^2$ )*

	<i>x</i>	<i>y</i>	<i>z</i>	$U_{\text{iso}}^*/U_{\text{eq}}$
O1	0.1517 (3)	0.3060 (4)	0.29591 (13)	0.0721 (9)
N1	0.0282 (4)	0.2527 (4)	0.05037 (14)	0.0548 (9)
H1A	0.0842	0.3201	0.0305	0.066*
H1B	-0.0676	0.2748	0.0447	0.066*
H1C	0.0469	0.1583	0.0369	0.066*
C1	0.1170 (5)	0.2823 (5)	0.23712 (18)	0.0497 (10)
C2	0.1934 (5)	0.3727 (5)	0.1965 (2)	0.0650 (12)
H2A	0.2650	0.4412	0.2105	0.078*
C3	0.1653 (5)	0.3630 (5)	0.13576 (18)	0.0596 (11)
H3A	0.2166	0.4258	0.1088	0.071*
C4	0.0621 (4)	0.2612 (4)	0.11502 (17)	0.0427 (9)
C5	-0.0123 (4)	0.1673 (5)	0.15443 (17)	0.0538 (10)
H5A	-0.0808	0.0958	0.1401	0.065*
C6	0.0153 (5)	0.1797 (5)	0.21591 (17)	0.0533 (11)
H6A	-0.0363	0.1173	0.2429	0.064*
C7	0.0851 (7)	0.2069 (6)	0.3394 (2)	0.0914 (17)
H7A	0.1184	0.2351	0.3791	0.137*
H7B	0.1134	0.1025	0.3312	0.137*
H7C	-0.0213	0.2162	0.3373	0.137*
Br1	0.25218 (4)	0.51025 (4)	-0.021898 (16)	0.0495 (2)

*Atomic displacement parameters ( $\text{\AA}^2$ )*

	$U^{11}$	$U^{22}$	$U^{33}$	$U^{12}$	$U^{13}$	$U^{23}$
O1	0.084 (2)	0.088 (2)	0.0449 (17)	0.0026 (19)	-0.0164 (17)	-0.0048 (17)
N1	0.057 (2)	0.059 (2)	0.0480 (19)	0.0099 (16)	-0.0074 (17)	-0.0047 (15)
C1	0.048 (2)	0.053 (2)	0.048 (2)	0.011 (2)	-0.0035 (19)	-0.006 (2)
C2	0.067 (3)	0.068 (3)	0.060 (3)	-0.021 (2)	-0.008 (2)	-0.009 (2)
C3	0.063 (3)	0.066 (3)	0.050 (3)	-0.017 (2)	-0.001 (2)	-0.001 (2)
C4	0.042 (2)	0.045 (2)	0.041 (2)	0.0082 (17)	-0.0029 (17)	-0.0057 (17)
C5	0.049 (2)	0.054 (3)	0.058 (3)	-0.005 (2)	-0.007 (2)	-0.006 (2)
C6	0.051 (3)	0.061 (3)	0.048 (2)	-0.004 (2)	0.001 (2)	0.0055 (19)

C7	0.107 (4)	0.120 (5)	0.047 (3)	0.011 (4)	-0.007 (3)	0.012 (3)
Br1	0.0493 (3)	0.0461 (3)	0.0531 (3)	0.00163 (19)	-0.0010 (2)	-0.00423 (18)

*Geometric parameters (Å, °)*

O1—C1	1.354 (5)	C3—C4	1.361 (5)
O1—C7	1.424 (6)	C3—H3A	0.9300
N1—C4	1.465 (5)	C4—C5	1.369 (5)
N1—H1A	0.8893	C5—C6	1.387 (5)
N1—H1B	0.8903	C5—H5A	0.9300
N1—H1C	0.8899	C6—H6A	0.9300
C1—C6	1.360 (6)	C7—H7A	0.9600
C1—C2	1.377 (6)	C7—H7B	0.9600
C2—C3	1.370 (5)	C7—H7C	0.9600
C2—H2A	0.9300		
C1—O1—C7	117.5 (4)	C3—C4—C5	120.4 (4)
C4—N1—H1A	109.5	C3—C4—N1	120.3 (4)
C4—N1—H1B	109.2	C5—C4—N1	119.4 (3)
H1A—N1—H1B	109.5	C4—C5—C6	119.4 (4)
C4—N1—H1C	109.6	C4—C5—H5A	120.3
H1A—N1—H1C	109.6	C6—C5—H5A	120.3
H1B—N1—H1C	109.5	C1—C6—C5	120.6 (4)
O1—C1—C6	125.9 (4)	C1—C6—H6A	119.7
O1—C1—C2	115.2 (4)	C5—C6—H6A	119.7
C6—C1—C2	118.9 (4)	O1—C7—H7A	109.5
C3—C2—C1	120.9 (4)	O1—C7—H7B	109.5
C3—C2—H2A	119.5	H7A—C7—H7B	109.5
C1—C2—H2A	119.5	O1—C7—H7C	109.5
C4—C3—C2	119.7 (4)	H7A—C7—H7C	109.5
C4—C3—H3A	120.1	H7B—C7—H7C	109.5
C2—C3—H3A	120.1		

*Hydrogen-bond geometry (Å, °)*

<i>D</i> —H... <i>A</i>	<i>D</i> —H	H... <i>A</i>	<i>D</i> ... <i>A</i>	<i>D</i> —H... <i>A</i>
N1—H1A...Br1	0.89	2.52	3.409 (3)	177
N1—H1B...Br1 <sup>i</sup>	0.89	2.55	3.314 (3)	145
N1—H1B...Br1 <sup>ii</sup>	0.89	3.00	3.430 (3)	112
N1—H1C...Br1 <sup>iii</sup>	0.89	2.57	3.300 (3)	140

Symmetry codes: (i)  $-x, -y+1, -z$ ; (ii)  $x-1/2, -y+1/2, -z$ ; (iii)  $-x+1/2, y-1/2, z$ .