

Acta Crystallographica Section E

## Structure Reports

Online

ISSN 1600-5368

## 2-Chloro-3-hydroxymethyl-6-methoxyquinoline

 F. Nawaz Khan,<sup>a</sup> S. Mohana Roopan,<sup>a</sup> Venkatesha R. Hathwar<sup>b</sup> and Seik Weng Ng<sup>c\*</sup>

<sup>a</sup>Chemistry Division, School of Science and Humanities, VIT University, Vellore 632 014, Tamil Nadu, India, <sup>b</sup>Solid State and Structural Chemistry Unit, Indian Institute of Science, Bangalore 560 012, Karnataka, India, and <sup>c</sup>Department of Chemistry, University of Malaya, 50603 Kuala Lumpur, Malaysia  
Correspondence e-mail: seikweng@um.edu.my

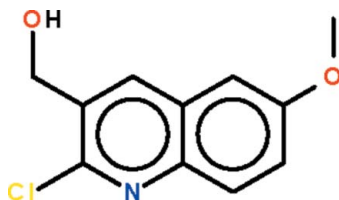
Received 12 December 2009; accepted 15 December 2009

 Key indicators: single-crystal X-ray study;  $T = 293$  K; mean  $\sigma(\text{C}-\text{C}) = 0.003$  Å;  $R$  factor = 0.041;  $wR$  factor = 0.108; data-to-parameter ratio = 17.0.

All the non-H atoms of the title compound,  $\text{C}_{11}\text{H}_{10}\text{ClNO}_2$ , are roughly coplanar (r.m.s. deviation = 0.058 Å). In the crystal, adjacent molecules are linked by an  $\text{O}-\text{H}\cdots\text{N}$  hydrogen bond, generating chains running along the  $a$  axis.

### Related literature

Substituted quinoline-3-carbaldehydes are intermediates for annelation and functional group modification; for a review of the synthesis of quinolines by the Vilsmeier–Haack reaction, see: Meth-Cohn (1993).



### Experimental

#### Crystal data

 $\text{C}_{11}\text{H}_{10}\text{ClNO}_2$   
 $M_r = 223.65$ 

 Monoclinic,  $P2_1/n$   
 $a = 6.9738$  (3) Å

 $b = 21.4668$  (9) Å  
 $c = 7.3479$  (4) Å  
 $\beta = 108.220$  (5)°  
 $V = 1044.87$  (8) Å<sup>3</sup>  
 $Z = 4$ 

 Mo  $K\alpha$  radiation  
 $\mu = 0.34$  mm<sup>-1</sup>  
 $T = 293$  K  
 $0.28 \times 0.21 \times 0.20$  mm

#### Data collection

 Bruker SMART area-detector diffractometer  
Absorption correction: multi-scan (SADABS; Sheldrick, 1996)  
 $T_{\min} = 0.910$ ,  $T_{\max} = 0.935$ 

 11517 measured reflections  
2348 independent reflections  
1487 reflections with  $I > 2\sigma(I)$   
 $R_{\text{int}} = 0.035$ 

#### Refinement

 $R[F^2 > 2\sigma(F^2)] = 0.041$   
 $wR(F^2) = 0.108$   
 $S = 0.97$   
2348 reflections

 138 parameters  
H-atom parameters constrained  
 $\Delta\rho_{\text{max}} = 0.21$  e Å<sup>-3</sup>  
 $\Delta\rho_{\text{min}} = -0.25$  e Å<sup>-3</sup>
**Table 1**

Hydrogen-bond geometry (Å, °).

$D-H\cdots A$	$D-H$	$H\cdots A$	$D\cdots A$	$D-H\cdots A$
$\text{O1}-\text{H1}\cdots\text{N1}^i$	0.82	2.16	2.913 (2)	153

 Symmetry code: (i)  $x + 1, y, z$ .

Data collection: SMART (Bruker, 2004); cell refinement: SAINT (Bruker, 2004); data reduction: SAINT; program(s) used to solve structure: SHELXS97 (Sheldrick, 2008); program(s) used to refine structure: SHELXL97 (Sheldrick, 2008); molecular graphics: X-SEED (Barbour, 2001); software used to prepare material for publication: publCIF (Westrip, 2010).

We thank the Department of Science and Technology, India, for use of the diffraction facility at IISc under the IRHPA–DST program. FNK thanks the DST for Fast Track Proposal funding. We thank VIT University and the University of Malaya for supporting this study.

Supplementary data and figures for this paper are available from the IUCr electronic archives (Reference: BT5140).

### References

- Barbour, L. J. (2001). *J. Supramol. Chem.* **1**, 189–191.  
Bruker (2004). SAINT and SMART. Bruker AXS Inc., Madison, Wisconsin, USA.  
Meth-Cohn, O. (1993). *Heterocycles*, **35**, 539–557.  
Sheldrick, G. M. (1996). SADABS. University of Göttingen, Germany.  
Sheldrick, G. M. (2008). *Acta Cryst.* **A64**, 112–122.  
Westrip, S. P. (2010). publCIF. In preparation.

## supporting information

*Acta Cryst.* (2010). E66, o201 [doi:10.1107/S1600536809054051]

## 2-Chloro-3-hydroxymethyl-6-methoxyquinoline

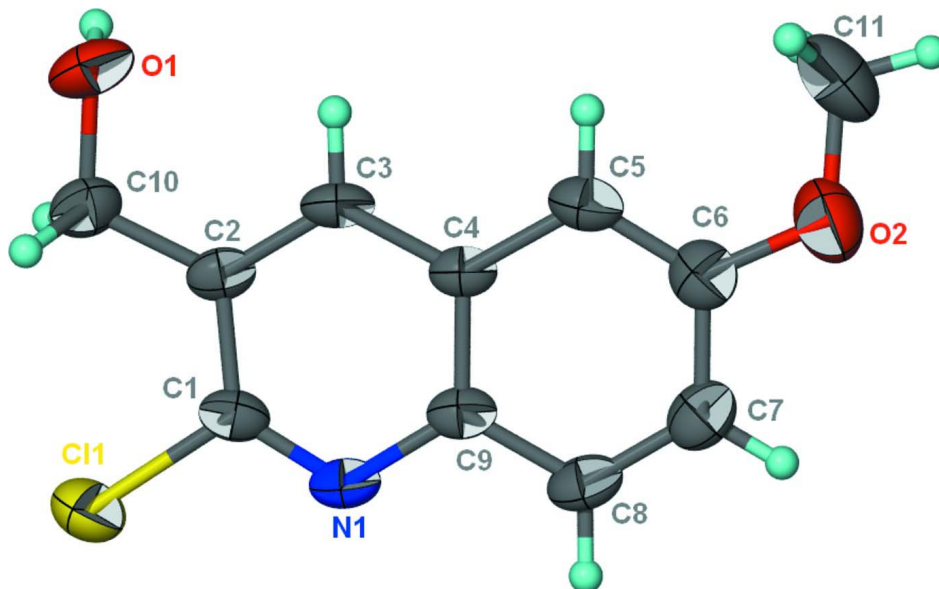
F. Nawaz Khan, S. Mohana Roopan, Venkatesha R. Hathwar and Seik Weng Ng

### S1. Experimental

2-Chloro-8-methoxyquinoline-3-carbaldehyde (220 mg, 1 mmol), sodium borohydride (38 mg, 1 mmol) and a catalytic amount of montmorillonite K-10 were placed in a beaker. The contents were irradiated at 500 W for 5 min. The product was dissolved in ethyl acetate and the residue removed by filtration. The filtrate was subjected to column chromatography on silica, and ethyl acetate/petroleum ether was used as the eluant. The solvent was evaporated and the residue recrystallized from chloroform to give colorless crystals.

### S2. Refinement

Hydrogen atoms were placed in calculated positions (C–H 0.93–0.97, O–H 0.82 Å) and were included in the refinement in the riding model approximation, with  $U(\text{H})$  set to 1.2–1.5 $U(\text{C}, \text{O})$ .



**Figure 1**

Anisotropic displacement ellipsoid plot (Barbour, 2001) of  $\text{C}_{11}\text{H}_{10}\text{ClNO}_2$  at the 50% probability level; hydrogen atoms are drawn as spheres of arbitrary radius.

## 2-Chloro-3-hydroxymethyl-6-methoxyquinoline

### Crystal data

$\text{C}_{11}\text{H}_{10}\text{ClNO}_2$   
 $M_r = 223.65$

Monoclinic,  $P2_1/n$   
Hall symbol: -P 2yn

$a = 6.9738$  (3) Å  
 $b = 21.4668$  (9) Å  
 $c = 7.3479$  (4) Å  
 $\beta = 108.220$  (5)°  
 $V = 1044.87$  (8) Å<sup>3</sup>  
 $Z = 4$   
 $F(000) = 464$   
 $D_x = 1.422$  Mg m<sup>-3</sup>

Mo  $K\alpha$  radiation,  $\lambda = 0.71073$  Å  
 Cell parameters from 1941 reflections  
 $\theta = 3.1\text{--}25.5^\circ$   
 $\mu = 0.34$  mm<sup>-1</sup>  
 $T = 293$  K  
 Block, colorless  
 $0.28 \times 0.21 \times 0.20$  mm

*Data collection*

Bruker SMART area-detector  
 diffractometer  
 Radiation source: fine-focus sealed tube  
 Graphite monochromator  
 $\varphi$  and  $\omega$  scans  
 Absorption correction: multi-scan  
 (SADABS; Sheldrick, 1996)  
 $T_{\min} = 0.910$ ,  $T_{\max} = 0.935$

11517 measured reflections  
 2348 independent reflections  
 1487 reflections with  $I > 2\sigma(I)$   
 $R_{\text{int}} = 0.035$   
 $\theta_{\max} = 27.5^\circ$ ,  $\theta_{\min} = 3.1^\circ$   
 $h = -9 \rightarrow 8$   
 $k = -26 \rightarrow 27$   
 $l = -9 \rightarrow 9$

*Refinement*

Refinement on  $F^2$   
 Least-squares matrix: full  
 $R[F^2 > 2\sigma(F^2)] = 0.041$   
 $wR(F^2) = 0.108$   
 $S = 0.97$   
 2348 reflections  
 138 parameters  
 0 restraints  
 Primary atom site location: structure-invariant  
 direct methods

Secondary atom site location: difference Fourier  
 map  
 Hydrogen site location: inferred from  
 neighbouring sites  
 H-atom parameters constrained  
 $w = 1/[\sigma^2(F_o^2) + (0.058P)^2]$   
 where  $P = (F_o^2 + 2F_c^2)/3$   
 $(\Delta/\sigma)_{\max} = 0.001$   
 $\Delta\rho_{\max} = 0.21$  e Å<sup>-3</sup>  
 $\Delta\rho_{\min} = -0.25$  e Å<sup>-3</sup>

*Fractional atomic coordinates and isotropic or equivalent isotropic displacement parameters (Å<sup>2</sup>)*

	<i>x</i>	<i>y</i>	<i>z</i>	$U_{\text{iso}}^*/U_{\text{eq}}$
C11	0.33210 (8)	0.65210 (2)	0.10064 (7)	0.0648 (2)
O1	0.97027 (18)	0.59162 (7)	0.33602 (19)	0.0672 (4)
H1	1.0200	0.5790	0.2554	0.101*
O2	0.4314 (2)	0.29302 (7)	0.3876 (2)	0.0766 (5)
N1	0.2607 (2)	0.53770 (7)	0.16969 (18)	0.0446 (4)
C1	0.4061 (3)	0.57605 (8)	0.1763 (2)	0.0430 (4)
C2	0.6156 (2)	0.56246 (8)	0.2401 (2)	0.0408 (4)
C3	0.6650 (2)	0.50291 (8)	0.2994 (2)	0.0437 (4)
H3	0.8004	0.4916	0.3461	0.052*
C4	0.5149 (2)	0.45775 (8)	0.2917 (2)	0.0390 (4)
C5	0.5600 (3)	0.39542 (9)	0.3483 (2)	0.0494 (5)
H5	0.6935	0.3821	0.3926	0.059*
C6	0.4070 (3)	0.35449 (9)	0.3379 (2)	0.0526 (5)
C7	0.2053 (3)	0.37443 (9)	0.2741 (2)	0.0546 (5)
H7	0.1027	0.3463	0.2698	0.065*
C8	0.1583 (3)	0.43397 (9)	0.2189 (2)	0.0507 (5)
H8	0.0238	0.4463	0.1758	0.061*
C9	0.3120 (2)	0.47761 (8)	0.2261 (2)	0.0405 (4)

C10	0.7702 (3)	0.61178 (9)	0.2442 (3)	0.0528 (5)
H10A	0.7575	0.6240	0.1138	0.063*
H10B	0.7430	0.6482	0.3103	0.063*
C11	0.6296 (4)	0.26820 (11)	0.4324 (4)	0.0912 (8)
H11A	0.6799	0.2747	0.3263	0.137*
H11B	0.6264	0.2244	0.4573	0.137*
H11C	0.7163	0.2887	0.5439	0.137*

*Atomic displacement parameters (Å<sup>2</sup>)*

	$U^{11}$	$U^{22}$	$U^{33}$	$U^{12}$	$U^{13}$	$U^{23}$
C11	0.0574 (3)	0.0603 (3)	0.0736 (4)	0.0151 (2)	0.0158 (3)	0.0111 (3)
O1	0.0365 (8)	0.0931 (11)	0.0762 (9)	-0.0030 (7)	0.0235 (7)	-0.0079 (8)
O2	0.0887 (12)	0.0522 (9)	0.0807 (10)	0.0010 (8)	0.0147 (8)	0.0016 (7)
N1	0.0306 (8)	0.0591 (9)	0.0412 (8)	0.0057 (7)	0.0069 (6)	-0.0035 (7)
C1	0.0389 (10)	0.0539 (10)	0.0365 (9)	0.0122 (8)	0.0123 (8)	-0.0006 (8)
C2	0.0347 (9)	0.0573 (11)	0.0341 (8)	0.0033 (8)	0.0161 (7)	-0.0036 (8)
C3	0.0277 (9)	0.0628 (11)	0.0403 (9)	0.0106 (8)	0.0103 (7)	-0.0021 (8)
C4	0.0328 (9)	0.0524 (10)	0.0307 (8)	0.0059 (8)	0.0083 (7)	-0.0051 (7)
C5	0.0420 (11)	0.0593 (12)	0.0428 (10)	0.0127 (9)	0.0076 (8)	-0.0032 (9)
C6	0.0589 (13)	0.0534 (12)	0.0427 (10)	-0.0005 (9)	0.0119 (9)	-0.0073 (9)
C7	0.0504 (12)	0.0631 (13)	0.0476 (10)	-0.0115 (10)	0.0115 (9)	-0.0095 (9)
C8	0.0334 (10)	0.0698 (13)	0.0443 (10)	-0.0022 (9)	0.0056 (8)	-0.0093 (9)
C9	0.0334 (9)	0.0559 (11)	0.0304 (8)	0.0047 (8)	0.0070 (7)	-0.0069 (8)
C10	0.0433 (11)	0.0653 (12)	0.0547 (11)	0.0001 (9)	0.0223 (9)	0.0013 (10)
C11	0.113 (2)	0.0600 (14)	0.1016 (18)	0.0275 (14)	0.0342 (16)	0.0121 (13)

*Geometric parameters (Å, °)*

C11—C1	1.7496 (18)	C4—C9	1.411 (2)
O1—C10	1.414 (2)	C5—C6	1.366 (2)
O1—H1	0.8200	C5—H5	0.9300
O2—C6	1.366 (2)	C6—C7	1.403 (3)
O2—C11	1.421 (3)	C7—C8	1.350 (3)
N1—C1	1.295 (2)	C7—H7	0.9300
N1—C9	1.368 (2)	C8—C9	1.412 (2)
C1—C2	1.418 (2)	C8—H8	0.9300
C2—C3	1.360 (2)	C10—H10A	0.9700
C2—C10	1.505 (2)	C10—H10B	0.9700
C3—C4	1.415 (2)	C11—H11A	0.9600
C3—H3	0.9300	C11—H11B	0.9600
C4—C5	1.407 (2)	C11—H11C	0.9600
C10—O1—H1	109.5	C8—C7—C6	120.86 (18)
C6—O2—C11	117.08 (18)	C8—C7—H7	119.6
C1—N1—C9	117.42 (14)	C6—C7—H7	119.6
N1—C1—C2	126.53 (16)	C7—C8—C9	120.44 (17)
N1—C1—C11	115.57 (13)	C7—C8—H8	119.8

C2—C1—C11	117.90 (14)	C9—C8—H8	119.8
C3—C2—C1	115.52 (16)	N1—C9—C4	121.87 (16)
C3—C2—C10	123.17 (16)	N1—C9—C8	119.38 (15)
C1—C2—C10	121.30 (16)	C4—C9—C8	118.75 (16)
C2—C3—C4	121.42 (16)	O1—C10—C2	112.82 (16)
C2—C3—H3	119.3	O1—C10—H10A	109.0
C4—C3—H3	119.3	C2—C10—H10A	109.0
C5—C4—C9	119.71 (16)	O1—C10—H10B	109.0
C5—C4—C3	123.07 (16)	C2—C10—H10B	109.0
C9—C4—C3	117.21 (15)	H10A—C10—H10B	107.8
C6—C5—C4	119.79 (17)	O2—C11—H11A	109.5
C6—C5—H5	120.1	O2—C11—H11B	109.5
C4—C5—H5	120.1	H11A—C11—H11B	109.5
O2—C6—C5	125.23 (18)	O2—C11—H11C	109.5
O2—C6—C7	114.34 (18)	H11A—C11—H11C	109.5
C5—C6—C7	120.43 (18)	H11B—C11—H11C	109.5
C9—N1—C1—C2	-1.4 (2)	C4—C5—C6—C7	-1.1 (3)
C9—N1—C1—C11	179.45 (10)	O2—C6—C7—C8	-179.55 (16)
N1—C1—C2—C3	0.1 (2)	C5—C6—C7—C8	1.1 (3)
C11—C1—C2—C3	179.24 (12)	C6—C7—C8—C9	-0.6 (3)
N1—C1—C2—C10	-178.78 (16)	C1—N1—C9—C4	0.9 (2)
C11—C1—C2—C10	0.4 (2)	C1—N1—C9—C8	-179.17 (15)
C1—C2—C3—C4	1.7 (2)	C5—C4—C9—N1	179.93 (14)
C10—C2—C3—C4	-179.43 (15)	C3—C4—C9—N1	0.8 (2)
C2—C3—C4—C5	178.76 (15)	C5—C4—C9—C8	0.0 (2)
C2—C3—C4—C9	-2.1 (2)	C3—C4—C9—C8	-179.16 (14)
C9—C4—C5—C6	0.5 (2)	C7—C8—C9—N1	-179.89 (15)
C3—C4—C5—C6	179.60 (16)	C7—C8—C9—C4	0.1 (2)
C11—O2—C6—C5	-7.7 (3)	C3—C2—C10—O1	-6.8 (2)
C11—O2—C6—C7	173.00 (17)	C1—C2—C10—O1	171.94 (14)
C4—C5—C6—O2	179.68 (15)		

Hydrogen-bond geometry ( $\text{\AA}$ ,  $^\circ$ )

$D-H\cdots A$	$D-H$	$H\cdots A$	$D\cdots A$	$D-H\cdots A$
O1—H1 $\cdots$ N1 <sup>i</sup>	0.82	2.16	2.913 (2)	153

Symmetry code: (i)  $x+1, y, z$ .