

Acta Crystallographica Section E

Structure Reports

Online

ISSN 1600-5368

2-[[4-Methoxyphenyl]dimethylsilyl]-methyl]isoindoline-1,3-dione

Iliia A. Guzei,* Lara C. Spencer and Uzma I. Zakai

Department of Chemistry, University of Wisconsin–Madison, 1101 University Ave, Madison, Wisconsin 53706, USA

Correspondence e-mail: iguzei@chem.wisc.edu

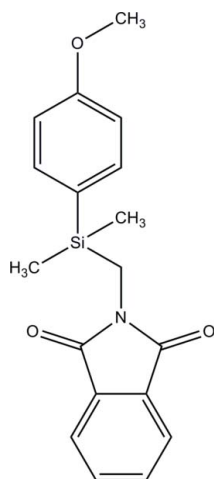
Received 24 November 2009; accepted 15 December 2009

 Key indicators: single-crystal X-ray study; $T = 300$ K; mean $\sigma(\text{C}–\text{C}) = 0.003$ Å; R factor = 0.046; wR factor = 0.131; data-to-parameter ratio = 15.2.

In the course of our studies of silicon-containing anticancer compounds, the title compound, $\text{C}_{18}\text{H}_{19}\text{NO}_3\text{Si}$, was synthesized. The molecular geometry including bond distances and angles involving the Si atoms are typical. Torsion angles associated with the isoindoline ring and the silyl group [$\text{C}–\text{N}–\text{C}_{\text{methylene}}–\text{Si} = 90.5$ (2) and -93.1 (2)°] indicate that there is no interaction between the O and Si atoms despite silicon's high affinity for oxygen.

Related literature

For literature related to drug design see: Bains & Tacke (2003); Bikzhanova *et al.* (2007); Franz (2007); Franz *et al.* (2007); Gately & West (2007); Guzei, Spencer, Zakai & Lynch (2010); Guzei, Spencer & Zakai (2010); Latxague & Leger (2004); Lee *et al.* (1993, 1996); Murai *et al.* (1998); Showell & Mills (2003); Tacke & Zilch (1986); Tsuge *et al.* (1985); Yoon *et al.* (1991, 1992, 1997). For a description of the Cambridge Structural Database, see: Allen (2002). Bond distances and angles were confirmed to be typical by a *Mogul* structural check (Bruno *et al.*, 2004).



Experimental

Crystal data

$\text{C}_{18}\text{H}_{19}\text{NO}_3\text{Si}$	$V = 1695.9$ (5) Å ³
$M_r = 325.43$	$Z = 4$
Monoclinic, $P2_1/c$	Mo $K\alpha$ radiation
$a = 10.2713$ (16) Å	$\mu = 0.15$ mm ⁻¹
$b = 14.061$ (3) Å	$T = 300$ K
$c = 12.069$ (2) Å	$0.50 \times 0.40 \times 0.23$ mm
$\beta = 103.355$ (6)°	

Data collection

Bruker SMART X2S diffractometer	11394 measured reflections
Absorption correction: multi-scan (SADABS; Bruker, 2009)	3197 independent reflections
$T_{\text{min}} = 0.928$, $T_{\text{max}} = 0.966$	2338 reflections with $I > 2\sigma(I)$
	$R_{\text{int}} = 0.042$

Refinement

$R[F^2 > 2\sigma(F^2)] = 0.046$	211 parameters
$wR(F^2) = 0.131$	H-atom parameters constrained
$S = 0.96$	$\Delta\rho_{\text{max}} = 0.21$ e Å ⁻³
3197 reflections	$\Delta\rho_{\text{min}} = -0.26$ e Å ⁻³

Data collection: *APEX2* and *GIS* (Bruker, 2009); cell refinement: *SAINT* (Bruker, 2009); data reduction: *SAINT*; program(s) used to solve structure: *SHELXTL* (Sheldrick, 2008); program(s) used to refine structure: *SHELXTL*, *OLEX2* (Dolomanov *et al.*, 2009) and *FCF_filter* (Guzei, 2007); molecular graphics: *SHELXTL*; software used to prepare material for publication: *SHELXTL*, *modiCIFer* (Guzei, 2007) and *publCIF* (Westrip, 2010).

We thank Dr N. J. Hill (UW-Madison) for acquiring the data and Professor R. West (UW-Madison) for his support. We gratefully acknowledge Bruker sponsorship of this publication and also acknowledge grants NIH 1 S10 RRO 8389-01 and NSF CHE-9629688 for providing NMR spectrometers, and grant NSF CHE-9304546 for providing the mass spectrometer.

Supplementary data and figures for this paper are available from the IUCr electronic archives (Reference: ZS2023).

References

- Allen, F. H. (2002). *Acta Cryst.* **B58**, 380–388.
 Bains, W. & Tacke, R. (2003). *Curr. Opin. Drug Discov. Devel.* **6**, 526–543.
 Bikzhanova, G. A., Touloukhanova, I. S., Gately, S. & West, R. (2007). *Silicon Chem.* **3**, 209–217.
 Bruker (2009). *APEX2*, *GIS*, *SADABS* and *SAINT*. Bruker AXS Inc., Madison, Wisconsin, USA.
 Bruno, I. J., Cole, J. C., Kessler, M., Luo, J., Motherwell, W. D. S., Purkis, L. H., Smith, B. R., Taylor, R., Cooper, R. I., Harris, S. E. & Orpen, A. G. (2004). *J. Chem. Inf. Comput. Sci.* **44**, 2133–2144.
 Dolomanov, O. V., Bourhis, L. J., Gildea, R. J., Howard, J. A. K. & Puschmann, H. (2009). *J. Appl. Cryst.* **42**, 339–341.
 Franz, A. K. T. (2007). *Curr. Opin. Drug Discov. Devel.* **10**, 654–671.
 Franz, A. K., Dreyfuss, P. D. & Schreiber, S. L. (2007). *J. Am. Chem. Soc.* **129**, 1020–1021.
 Gately, S. & West, R. (2007). *Drug Dev. Res.* **68**, 156–163.
 Guzei, I. A. (2007). In-house Crystallographic Programs: *FCF_filter*, *INSerter* and *modiCIFer*. Molecular Structure Laboratory, University of Wisconsin–Madison, Madison, Wisconsin, USA.
 Guzei, I. A., Spencer, L. C. & Zakai, U. I. (2010). *Acta Cryst.* **E66**, o223–o224.
 Guzei, I. A., Spencer, L. C., Zakai, U. I. & Lynch, D. C. (2010). *Acta Cryst.* **E66**, o221–o222.
 Latxague, L. & Leger, J.-M. (2004). *Anal. Sci.* **20**, x125–x126.
 Lee, Y. J., Lee, C. P., Jeon, Y. T., Mariano, P. S., Yoon, U. C., Kim, D. U., Kim, J. C. & Lee, J. G. (1993). *Tetrahedron Lett.* **34**, 5855–5858.

- Lee, Y. J., Ling, R., Mariano, P. S., Yoon, U. C., Kim, D. U. & Oh, S. W. (1996). *J. Org. Chem.* **61**, 3304–3314.
- Murai, T., Kimura, F., Tsutsui, K., Hasegawa, K. & Kato, S. (1998). *Organometallics*, **17**, 926–932.
- Sheldrick, G. M. (2008). *Acta Cryst.* **A64**, 112–122.
- Showell, G. A. & Mills, J. S. (2003). *Drug Discov. Today*, **8**, 551–556.
- Tacke, R. & Zilch, H. (1986). *Endeavour*, **10**, 191–197.
- Tsuge, O., Tanaka, J. & Kanemasa, S. (1985). *Bull. Chem. Soc. Jpn*, **58**, 1991–1999.
- Westrip, S. P. (2010). *publCIF*. In preparation.
- Yoon, U. C., Cho, S. J., Oh, J. H., Lee, J. G., Kang, K. T. & Mariano, P. S. (1991). *Bull. Korean Chem. Soc.* **12**, 241–243.
- Yoon, U. C., Kim, J. W., Ryu, J. Y., Cho, S. J., Oh, S. W. & Mariano, P. S. (1997). *J. Photochem. Photobiol. A Chem.* **106**, 145–154.
- Yoon, U. C., Oh, J. H., Lee, S. J., Kim, D. U., Lee, J. G., Kang, K. T. & Mariano, P. S. (1992). *Bull. Korean Chem. Soc.* **13**, 166–172.

supporting information

Acta Cryst. (2010). E66, o219–o220 [doi:10.1107/S1600536809054129]

2-[[4-Methoxyphenyl]dimethylsilyl]methyl]isoindoline-1,3-dione

Ilia A. Guzei, Lara C. Spencer and Uzma I. Zakai

S1. Comment

Sila phthalimides are important intermediates in photochemistry (Lee *et al.*, 1993, 1996; Yoon *et al.*, 1997, 1992, 1991) and organic synthesis (Bikzhanova *et al.*, 2007; Tsuge *et al.*, 1985). We have used such compounds for the synthesis of selectively substituted sila amines (Bikzhanova *et al.*, 2007) in order to identify biologically active organosilicon compounds. Organosilicon chemistry is a growing method of expanding chemical diversity (Franz, 2007; Franz *et al.*, 2007; Tacke & Zilch, 1986; Showell & Mills, 2003), and it constitutes a powerful method of enhancing pharmacological properties in drug design (Bains & Tacke, 2003). In the course of our studies of silicon-containing anti-cancer compounds the title compound, (I), was synthesized and its structure is reported here.

The bond distances and angles of (I) are typical as confirmed by the *Mogul* structural check (Bruno *et al.*, 2004), and agree well with those for 2-(3-(methyldiphenylsilyl)propyl)isoindoline-1,3-dione (Guzei, Spencer, Zakai & Lynch, 2010) and 2-(2-(trimethylsilyl)ethyl)isoindoline-1,3-dione (Guzei, Spencer & Zakai, 2010). Specifically, the average Si—C distances of 1.868 (19) Å for compound (I) are statistically similar to the 1.859 (6) Å average for six related compounds in the Cambridge Structural Database (Version 1.11, September 2009 release; Allen, 2002). The Si atom has a distorted tetrahedral geometry with angles ranging from 107.86 (10)° to 110.81 (13)°. Torsion angles C(11/18)—N1—C10—Si1 involving the silyl group are 90.5 (2) and -93.1 (2)°, similar to those in the related compound 6-(phthalimidomethyl(dimethyl)silyl)hexan-1-ol (Lataxague & Leger, 2004). This is an indication that there is no interaction between the carbonyl oxygen and the silicon atom despite silicon's high affinity for oxygen (Murai *et al.*, 1998).

The phthalate entity is planar within 0.0084 Å, and the methoxyphenyl group within 0.0044 Å. These groups are nearly parallel forming a 4.61 (8)° angle between their planes. There is one non-classical intermolecular interaction C4—H4⋯O2 with a C⋯O distance of 3.410 (3) Å and a C—H⋯O angle of 134°. This weak interaction helps link the molecules of (I) into a three-dimensional framework.

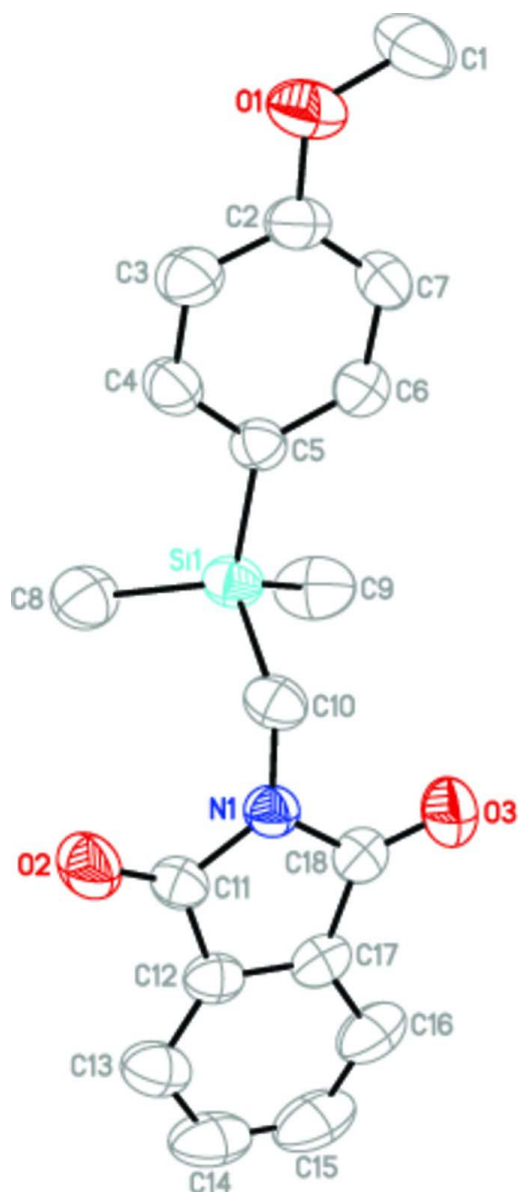
S2. Experimental

The protocol described by Tsuge and co-workers (Tsuge *et al.*, 1985) was adopted. The required amount of potassium phthalimide (4.79 g, 25.88 mmol, 1.1 equiv) was placed into a 100 ml round-bottom flask, which was then sealed and flushed with nitrogen three times. Dry DMF (36 ml) was syringed into the flask followed by the addition of 4-methoxybenzylchloride (5.05 g, 23.53 mmol, 1 equiv.) The reaction was heated at 60°C for 6 h and the resulting mixture was then allowed to cool to room temperature. This slurry was poured onto a minimum quantity of water and extracted 3–5 times with ethyl ether. The organic extracts were subsequently collected, dried with magnesium sulfate, and filtered. The filtrate was mixed with silica gel and evaporated under reduced pressure to afford a powder of silica gel. This powder was loaded onto a dry-packed silica gel column and eluted using a gradient column. The fractions of interest were mobilized using a 8:2 hexane:ethyl acetate mixture but did not completely elute until a 1:1 hex:EtOAc mixture was employed. The fractions were then combined to afford the desired compound. Further recrystallization from dichloromethane afforded

cream colored crystals (5.35 g, 16.44 mmol, 70% yield) for X-ray crystallography. Manipulation of air and moisture sensitive compounds was performed using standard high-vacuum line techniques. All solvents and reagents were obtained from Aldrich. 4-Methoxybenzylchloride was purchased from Acros Organics. ^1H NMR spectra were obtained on a Varian Unity 500 spectrometer, ^{13}C {H} NMR spectra were obtained on a Varian 500 spectrometer operating at 125 MHz, ^{29}Si {H} NMR spectra were obtained on a Varian Unity spectrometer operating at 99 MHz. Mass spectra were determined on a Waters (Micromass) AutoSpec mass spectrometer. Melting points were determined on a Mel-Temp Laboratory Device. mp 75–77°C; ^1H NMR (500 MHz, CDCl_3) δ 0.36 (s, 6H, CH_3), 3.35 (s, 2H, CH_2), 3.77 (s, 3H, OMe), 6.87 (m, 2H, ArH), 7.47 (m, 2H, ArH), 7.64 (dd, $J=5.45, 3.01$ Hz, 2H, ArH), 7.75 (dd, $J=5.38, 3.07$ Hz, 2H, ArH); ^{13}C NMR (125 MHz, CDCl_3) δ -2.9 (SiCH_3), 28.8 (CH_2), 55.0 (OMe), 113.6 (CH), 122.8 (CH), 127.1 (CH), 132.2 (CH), 133.5 (CH), 135.2 (CH), 160.7 (CH), 168.4 (CH); ^{29}Si NMR (99 MHz, CDCl_3) δ -3.17 ($\text{SiMe}_2\text{PhOMe}$); MS (EI^+) m/z (*rel.* intensity %) 324 ($M-1$, 9), 310 ($M-\text{Me}$, 100), 218 (56), 165 (75); HRMS (EI^+): calcd. for $\text{C}_{18}\text{H}_{19}\text{NO}_3\text{Si}$ (M^+) 325.1129, found ($M-\text{Me}$) $^+$ 310.0894.

S3. Refinement

All H-atoms were placed in idealized locations and refined as riding with appropriate thermal displacement coefficients $U_{\text{iso}}(\text{H}) = 1.2$ or 1.5 times $U_{\text{eq}}(\text{bearing atom})$. The data were collected at room temperature on a Bruker SMART X2S diffractometer in the automated mode and manually processed thereafter.

**Figure 1**

Molecular structure of (I). The thermal ellipsoids are shown at 50% probability level.

2-[[4-(4-Methoxyphenyl)dimethylsilyl]methyl]isoindoline-1,3-dione

Crystal data

$C_{18}H_{19}NO_3Si$

$M_r = 325.43$

Monoclinic, $P2_1/c$

Hall symbol: $-P\ 2_1/c$

$a = 10.2713\ (16)\ \text{\AA}$

$b = 14.061\ (3)\ \text{\AA}$

$c = 12.069\ (2)\ \text{\AA}$

$\beta = 103.355\ (6)^\circ$

$V = 1695.9\ (5)\ \text{\AA}^3$

$Z = 4$

$F(000) = 688$

$D_x = 1.275\ \text{Mg m}^{-3}$

Mo $K\alpha$ radiation, $\lambda = 0.71073\ \text{\AA}$

Cell parameters from 3201 reflections

$\theta = 2.3\text{--}24.8^\circ$

$\mu = 0.15\ \text{mm}^{-1}$

$T = 300\ \text{K}$

Block, colourless

$0.50 \times 0.40 \times 0.23\ \text{mm}$

Data collection

Bruker SMART X2S diffractometer	11394 measured reflections 3197 independent reflections
Radiation source: micro-focus sealed tube	2338 reflections with $I > 2\sigma(I)$
Doubly curved silicon crystal monochromator	$R_{\text{int}} = 0.042$
ω scans	$\theta_{\text{max}} = 25.7^\circ$, $\theta_{\text{min}} = 2.5^\circ$
Absorption correction: multi-scan (SADABS; Bruker, 2009)	$h = -12 \rightarrow 12$
$T_{\text{min}} = 0.928$, $T_{\text{max}} = 0.966$	$k = -17 \rightarrow 17$
	$l = -11 \rightarrow 14$

Refinement

Refinement on F^2	Secondary atom site location: difference Fourier map
Least-squares matrix: full	Hydrogen site location: inferred from neighbouring sites
$R[F^2 > 2\sigma(F^2)] = 0.046$	H-atom parameters constrained
$wR(F^2) = 0.131$	$w = 1/[\sigma^2(F_o^2) + (0.0812P)^2 + 0.1363P]$
$S = 0.96$	where $P = (F_o^2 + 2F_c^2)/3$
3197 reflections	$(\Delta/\sigma)_{\text{max}} < 0.001$
211 parameters	$\Delta\rho_{\text{max}} = 0.21 \text{ e } \text{\AA}^{-3}$
0 restraints	$\Delta\rho_{\text{min}} = -0.26 \text{ e } \text{\AA}^{-3}$
Primary atom site location: structure-invariant direct methods	

Special details

Geometry. All e.s.d.'s (except the e.s.d. in the dihedral angle between two l.s. planes) are estimated using the full covariance matrix. The cell e.s.d.'s are taken into account individually in the estimation of e.s.d.'s in distances, angles and torsion angles; correlations between e.s.d.'s in cell parameters are only used when they are defined by crystal symmetry. An approximate (isotropic) treatment of cell e.s.d.'s is used for estimating e.s.d.'s involving l.s. planes.

Refinement. Refinement of F^2 against ALL reflections. The weighted R -factor wR and goodness of fit S are based on F^2 , conventional R -factors R are based on F , with F set to zero for negative F^2 . The threshold expression of $F^2 > \sigma(F^2)$ is used only for calculating R -factors(gt) etc. and is not relevant to the choice of reflections for refinement. R -factors based on F^2 are statistically about twice as large as those based on F , and R -factors based on ALL data will be even larger.

Fractional atomic coordinates and isotropic or equivalent isotropic displacement parameters (\AA^2)

	x	y	z	$U_{\text{iso}}^*/U_{\text{eq}}$
Si1	-0.00370 (6)	0.19378 (4)	0.82075 (5)	0.0462 (2)
O1	-0.34928 (17)	0.48107 (11)	0.99174 (16)	0.0762 (5)
O2	0.14405 (16)	-0.05076 (11)	0.93970 (14)	0.0674 (5)
O3	0.38001 (16)	0.20812 (11)	0.87061 (17)	0.0779 (5)
N1	0.23597 (15)	0.09334 (11)	0.90879 (13)	0.0439 (4)
C1	-0.3261 (3)	0.57979 (18)	0.9894 (3)	0.0880 (9)
H1A	-0.2364	0.5935	1.0307	0.132*
H1B	-0.3884	0.6127	1.0240	0.132*
H1C	-0.3377	0.6004	0.9119	0.132*
C2	-0.2647 (2)	0.42125 (15)	0.95212 (18)	0.0518 (5)
C3	-0.2964 (2)	0.32606 (16)	0.9526 (2)	0.0603 (6)
H3	-0.3712	0.3068	0.9779	0.072*
C4	-0.2182 (2)	0.25971 (15)	0.91604 (18)	0.0532 (5)
H4	-0.2403	0.1958	0.9189	0.064*
C5	-0.10617 (18)	0.28429 (13)	0.87447 (16)	0.0426 (5)
C6	-0.0790 (2)	0.38081 (15)	0.87433 (18)	0.0521 (5)

H6	-0.0060	0.4007	0.8470	0.063*
C7	-0.1555 (2)	0.44937 (15)	0.91292 (19)	0.0552 (6)
H7	-0.1330	0.5134	0.9122	0.066*
C8	-0.1060 (2)	0.08665 (17)	0.7693 (2)	0.0682 (7)
H8A	-0.1350	0.0579	0.8316	0.102*
H8B	-0.0531	0.0419	0.7385	0.102*
H8C	-0.1827	0.1048	0.7112	0.102*
C9	0.0661 (3)	0.2458 (2)	0.7055 (2)	0.0755 (7)
H9A	-0.0049	0.2730	0.6484	0.113*
H9B	0.1098	0.1969	0.6719	0.113*
H9C	0.1297	0.2944	0.7367	0.113*
C10	0.1385 (2)	0.15592 (15)	0.94299 (17)	0.0494 (5)
H10A	0.1844	0.2123	0.9785	0.059*
H10B	0.1014	0.1235	0.9996	0.059*
C11	0.2303 (2)	-0.00539 (14)	0.91102 (16)	0.0449 (5)
C12	0.34907 (19)	-0.03966 (14)	0.87220 (16)	0.0466 (5)
C13	0.3901 (2)	-0.13083 (17)	0.85585 (19)	0.0637 (6)
H13	0.3418	-0.1836	0.8699	0.076*
C14	0.5067 (3)	-0.1404 (2)	0.8175 (2)	0.0792 (8)
H14	0.5375	-0.2009	0.8055	0.095*
C15	0.5775 (3)	-0.0621 (2)	0.7968 (2)	0.0838 (9)
H15	0.6555	-0.0710	0.7715	0.101*
C16	0.5365 (2)	0.0289 (2)	0.8124 (2)	0.0713 (7)
H16	0.5847	0.0815	0.7977	0.086*
C17	0.4204 (2)	0.03886 (15)	0.85097 (17)	0.0498 (5)
C18	0.34950 (19)	0.12526 (16)	0.87585 (17)	0.0515 (5)

Atomic displacement parameters (Å²)

	U^{11}	U^{22}	U^{33}	U^{12}	U^{13}	U^{23}
Si1	0.0503 (4)	0.0469 (3)	0.0444 (3)	0.0088 (2)	0.0174 (3)	0.0027 (2)
O1	0.0752 (11)	0.0601 (10)	0.1004 (13)	0.0179 (8)	0.0350 (10)	-0.0101 (9)
O2	0.0723 (11)	0.0521 (9)	0.0872 (12)	0.0016 (8)	0.0377 (9)	0.0162 (8)
O3	0.0658 (11)	0.0540 (11)	0.1174 (15)	-0.0131 (8)	0.0284 (10)	0.0015 (9)
N1	0.0430 (9)	0.0418 (9)	0.0487 (9)	0.0035 (7)	0.0143 (7)	0.0013 (7)
C1	0.0881 (19)	0.0571 (16)	0.116 (2)	0.0182 (14)	0.0166 (17)	-0.0252 (15)
C2	0.0478 (12)	0.0503 (12)	0.0567 (13)	0.0113 (10)	0.0112 (10)	-0.0017 (10)
C3	0.0551 (13)	0.0580 (14)	0.0758 (16)	0.0070 (11)	0.0316 (12)	0.0077 (11)
C4	0.0581 (13)	0.0403 (11)	0.0665 (13)	0.0034 (10)	0.0253 (11)	0.0063 (10)
C5	0.0425 (11)	0.0424 (11)	0.0420 (10)	0.0042 (8)	0.0080 (8)	0.0054 (8)
C6	0.0450 (11)	0.0482 (12)	0.0646 (13)	-0.0004 (9)	0.0156 (10)	0.0031 (10)
C7	0.0550 (13)	0.0365 (11)	0.0704 (14)	0.0007 (9)	0.0069 (11)	-0.0012 (10)
C8	0.0661 (15)	0.0660 (15)	0.0713 (15)	0.0044 (12)	0.0136 (12)	-0.0197 (12)
C9	0.0809 (17)	0.0925 (19)	0.0626 (15)	0.0215 (15)	0.0363 (13)	0.0217 (14)
C10	0.0564 (12)	0.0448 (11)	0.0501 (12)	0.0086 (9)	0.0187 (10)	-0.0041 (9)
C11	0.0504 (12)	0.0418 (11)	0.0430 (11)	0.0051 (9)	0.0116 (9)	0.0052 (9)
C12	0.0459 (11)	0.0519 (12)	0.0389 (11)	0.0082 (9)	0.0033 (9)	-0.0011 (9)
C13	0.0690 (15)	0.0558 (14)	0.0628 (14)	0.0159 (12)	0.0077 (12)	-0.0073 (11)

C14	0.0711 (17)	0.085 (2)	0.0755 (17)	0.0336 (15)	0.0050 (14)	-0.0252 (15)
C15	0.0519 (15)	0.119 (3)	0.0816 (18)	0.0232 (17)	0.0187 (13)	-0.0206 (18)
C16	0.0421 (12)	0.095 (2)	0.0787 (17)	0.0064 (12)	0.0175 (11)	-0.0080 (14)
C17	0.0388 (11)	0.0629 (14)	0.0456 (11)	0.0041 (9)	0.0053 (9)	-0.0016 (10)
C18	0.0440 (11)	0.0517 (13)	0.0569 (13)	-0.0012 (10)	0.0080 (9)	0.0019 (10)

Geometric parameters (Å, °)

Si1—C9	1.856 (2)	C6—H6	0.9300
Si1—C8	1.859 (2)	C7—H7	0.9300
Si1—C5	1.8609 (19)	C8—H8A	0.9600
Si1—C10	1.897 (2)	C8—H8B	0.9600
O1—C2	1.372 (2)	C8—H8C	0.9600
O1—C1	1.410 (3)	C9—H9A	0.9600
O2—C11	1.205 (2)	C9—H9B	0.9600
O3—C18	1.212 (2)	C9—H9C	0.9600
N1—C11	1.390 (3)	C10—H10A	0.9700
N1—C18	1.390 (2)	C10—H10B	0.9700
N1—C10	1.462 (2)	C11—C12	1.485 (3)
C1—H1A	0.9600	C12—C13	1.378 (3)
C1—H1B	0.9600	C12—C17	1.381 (3)
C1—H1C	0.9600	C13—C14	1.386 (3)
C2—C7	1.372 (3)	C13—H13	0.9300
C2—C3	1.378 (3)	C14—C15	1.374 (4)
C3—C4	1.369 (3)	C14—H14	0.9300
C3—H3	0.9300	C15—C16	1.373 (4)
C4—C5	1.400 (3)	C15—H15	0.9300
C4—H4	0.9300	C16—C17	1.383 (3)
C5—C6	1.386 (3)	C16—H16	0.9300
C6—C7	1.390 (3)	C17—C18	1.482 (3)
C9—Si1—C8	110.81 (13)	H8A—C8—H8C	109.5
C9—Si1—C5	109.82 (10)	H8B—C8—H8C	109.5
C8—Si1—C5	110.42 (10)	Si1—C9—H9A	109.5
C9—Si1—C10	109.38 (11)	Si1—C9—H9B	109.5
C8—Si1—C10	107.86 (10)	H9A—C9—H9B	109.5
C5—Si1—C10	108.48 (8)	Si1—C9—H9C	109.5
C2—O1—C1	118.2 (2)	H9A—C9—H9C	109.5
C11—N1—C18	111.69 (16)	H9B—C9—H9C	109.5
C11—N1—C10	124.13 (16)	N1—C10—Si1	113.82 (13)
C18—N1—C10	124.10 (17)	N1—C10—H10A	108.8
O1—C1—H1A	109.5	Si1—C10—H10A	108.8
O1—C1—H1B	109.5	N1—C10—H10B	108.8
H1A—C1—H1B	109.5	Si1—C10—H10B	108.8
O1—C1—H1C	109.5	H10A—C10—H10B	107.7
H1A—C1—H1C	109.5	O2—C11—N1	124.82 (18)
H1B—C1—H1C	109.5	O2—C11—C12	129.12 (19)
O1—C2—C7	125.3 (2)	N1—C11—C12	106.06 (17)

O1—C2—C3	115.12 (19)	C13—C12—C17	121.6 (2)
C7—C2—C3	119.63 (19)	C13—C12—C11	130.4 (2)
C4—C3—C2	120.2 (2)	C17—C12—C11	108.00 (17)
C4—C3—H3	119.9	C12—C13—C14	117.0 (2)
C2—C3—H3	119.9	C12—C13—H13	121.5
C3—C4—C5	122.63 (19)	C14—C13—H13	121.5
C3—C4—H4	118.7	C15—C14—C13	121.1 (2)
C5—C4—H4	118.7	C15—C14—H14	119.4
C6—C5—C4	115.11 (18)	C13—C14—H14	119.4
C6—C5—Si1	122.64 (15)	C16—C15—C14	122.0 (2)
C4—C5—Si1	122.24 (15)	C16—C15—H15	119.0
C5—C6—C7	123.3 (2)	C14—C15—H15	119.0
C5—C6—H6	118.3	C15—C16—C17	117.1 (3)
C7—C6—H6	118.3	C15—C16—H16	121.4
C2—C7—C6	119.06 (19)	C17—C16—H16	121.4
C2—C7—H7	120.5	C12—C17—C16	121.1 (2)
C6—C7—H7	120.5	C12—C17—C18	108.11 (18)
Si1—C8—H8A	109.5	C16—C17—C18	130.8 (2)
Si1—C8—H8B	109.5	O3—C18—N1	124.7 (2)
H8A—C8—H8B	109.5	O3—C18—C17	129.2 (2)
Si1—C8—H8C	109.5	N1—C18—C17	106.09 (18)
C1—O1—C2—C7	2.1 (3)	C18—N1—C11—C12	-2.0 (2)
C1—O1—C2—C3	-177.5 (2)	C10—N1—C11—C12	-178.81 (15)
O1—C2—C3—C4	-179.3 (2)	O2—C11—C12—C13	1.9 (4)
C7—C2—C3—C4	1.1 (3)	N1—C11—C12—C13	-178.2 (2)
C2—C3—C4—C5	-1.6 (3)	O2—C11—C12—C17	-178.8 (2)
C3—C4—C5—C6	0.8 (3)	N1—C11—C12—C17	1.1 (2)
C3—C4—C5—Si1	-178.04 (17)	C17—C12—C13—C14	0.2 (3)
C9—Si1—C5—C6	-30.5 (2)	C11—C12—C13—C14	179.45 (19)
C8—Si1—C5—C6	-153.00 (17)	C12—C13—C14—C15	0.0 (4)
C10—Si1—C5—C6	88.99 (18)	C13—C14—C15—C16	-0.3 (4)
C9—Si1—C5—C4	148.23 (18)	C14—C15—C16—C17	0.4 (4)
C8—Si1—C5—C4	25.73 (19)	C13—C12—C17—C16	-0.1 (3)
C10—Si1—C5—C4	-92.27 (18)	C11—C12—C17—C16	-179.46 (18)
C4—C5—C6—C7	0.4 (3)	C13—C12—C17—C18	179.50 (18)
Si1—C5—C6—C7	179.23 (16)	C11—C12—C17—C18	0.1 (2)
O1—C2—C7—C6	-179.48 (19)	C15—C16—C17—C12	-0.3 (3)
C3—C2—C7—C6	0.0 (3)	C15—C16—C17—C18	-179.7 (2)
C5—C6—C7—C2	-0.8 (3)	C11—N1—C18—O3	-177.6 (2)
C11—N1—C10—Si1	-93.1 (2)	C10—N1—C18—O3	-0.8 (3)
C18—N1—C10—Si1	90.5 (2)	C11—N1—C18—C17	2.1 (2)
C9—Si1—C10—N1	-53.22 (18)	C10—N1—C18—C17	178.88 (16)
C8—Si1—C10—N1	67.39 (17)	C12—C17—C18—O3	178.3 (2)
C5—Si1—C10—N1	-172.99 (14)	C16—C17—C18—O3	-2.2 (4)
C18—N1—C11—O2	177.87 (19)	C12—C17—C18—N1	-1.3 (2)
C10—N1—C11—O2	1.1 (3)	C16—C17—C18—N1	178.2 (2)