

Acta Crystallographica Section E

Structure Reports

Online

ISSN 1600-5368

1-Dichloroacetyl-*r*-2,*c*-6-bis(4-methoxyphenyl)-*t*-3-methylpiperidin-4-one

K. Ravichandran,^a P. Ramesh,^a P. Sakthivel,^b
S. Ponnuswamy^b and M. N. Ponnuswamy^{a*}

^aCentre of Advanced Study in Crystallography and Biophysics, University of Madras, Guindy Campus, Chennai 600 025, India, and ^bDepartment of Chemistry, Government Arts College (Autonomous), Coimbatore 641 018, India
Correspondence e-mail: mnpsy2004@yahoo.com

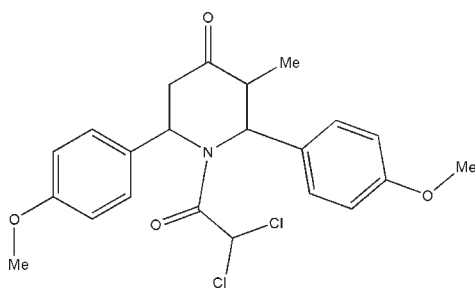
Received 17 December 2009; accepted 19 December 2009

Key indicators: single-crystal X-ray study; $T = 293$ K; mean $\sigma(\text{C}-\text{C}) = 0.005$ Å; R factor = 0.055; wR factor = 0.210; data-to-parameter ratio = 19.4.

In the title compound, $\text{C}_{22}\text{H}_{23}\text{Cl}_2\text{NO}_4$, the piperidine ring adopts a distorted boat conformation. The methoxy groups lie in the plane of the benzene rings to which they are attached. The benzene rings are oriented at angles of $84.3(1)$ and $76.8(1)^\circ$ with respect to the best plane through the piperidine ring. The crystal packing is stabilized by intermolecular $\text{C}-\text{H}\cdots\text{O}$ interactions.

Related literature

For general background to piperidine derivatives, see: Perumal *et al.* (2001); Dimmock *et al.* (2001). For asymmetry parameters, see: Nardelli (1983). For puckering parameters, see: Cremer & Pople (1975). For hydrogen-bond motifs, see: Bernstein *et al.* (1995).



Experimental

Crystal data

$\text{C}_{22}\text{H}_{23}\text{Cl}_2\text{NO}_4$
 $M_r = 436.31$
Monoclinic, $P2_1/c$

$a = 19.3021(16)$ Å
 $b = 10.5886(9)$ Å
 $c = 10.3241(10)$ Å

$\beta = 91.445(5)^\circ$
 $V = 2109.4(3)$ Å³
 $Z = 4$
Mo $K\alpha$ radiation

$\mu = 0.34$ mm⁻¹
 $T = 293$ K
 $0.25 \times 0.24 \times 0.23$ mm

Data collection

Bruker SMART APEXII area-detector diffractometer
Absorption correction: multi-scan (SADABS; Bruker, 2008)
 $T_{\min} = 0.919$, $T_{\max} = 0.926$

17272 measured reflections
5140 independent reflections
2632 reflections with $I > 2\sigma(I)$
 $R_{\text{int}} = 0.050$

Refinement

$R[F^2 > 2\sigma(F^2)] = 0.055$
 $wR(F^2) = 0.210$
 $S = 1.05$
5140 reflections

265 parameters
H-atom parameters constrained
 $\Delta\rho_{\text{max}} = 0.37$ e Å⁻³
 $\Delta\rho_{\text{min}} = -0.34$ e Å⁻³

Table 1

Hydrogen-bond geometry (Å, °).

$D-H\cdots A$	$D-H$	$H\cdots A$	$D\cdots A$	$D-H\cdots A$
$\text{C6}-\text{H6}\cdots\text{O1}^{\dagger}$	0.98	2.31	3.264 (4)	164
$\text{C8}-\text{H8}\cdots\text{O1}^{\dagger}$	0.98	2.52	3.363 (4)	144
$\text{C18}-\text{H18}\cdots\text{O1}^{\dagger}$	0.93	2.57	3.391 (4)	147

Symmetry code: (i) $x, -y + \frac{1}{2}, z - \frac{1}{2}$.

Data collection: APEX2 (Bruker, 2008); cell refinement: SAINT (Bruker, 2008); data reduction: SAINT; program(s) used to solve structure: SHELXS97 (Sheldrick, 2008); program(s) used to refine structure: SHELXL97 (Sheldrick, 2008); molecular graphics: ORTEP-3 (Farrugia, 1997); software used to prepare material for publication: SHELXL97 and PLATON (Spek, 2009).

KR thanks the GNR X-ray Facility, CAS in Crystallography and Biophysics, University of Madras, India, for the data collection and the management of Kandaswami Kandar's College, Velur, Namakkal, TN, India, for the encouragement to pursue the programme.

Supplementary data and figures for this paper are available from the IUCr electronic archives (Reference: BT5145).

References

- Bernstein, J., Davis, R. E., Shimon, L. & Chang, N.-L. (1995). *Angew. Chem. Int. Ed. Engl.* **34**, 1555–1573.
Bruker (2008). APEX2, SAINT and SADABS. Bruker AXS Inc., Madison, Wisconsin, USA.
Cremer, D. & Pople, J. A. (1975). *J. Am. Chem. Soc.* **97**, 1354–1358.
Dimmock, J. R., Padmanilayam, M. P., Puthucode, R. N., Nazarali, A. J., Motaganahalli, N. L., Zello, G. A., Quail, J. W., Oloo, E. O., Kraatz, H. B., Prisciak, J. S., Allen, T. M., Santhos, C. L., Balsarini, J., Clercq, E. D. & Manavathu, E. K. (2001). *J. Med. Chem.* **44**, 586–593.
Farrugia, L. J. (1997). *J. Appl. Cryst.* **30**, 565.
Nardelli, M. (1983). *Acta Cryst.* **C39**, 1141–1142.
Perumal, R. V., Adiraj, M. & Shanmugapandiyani, P. (2001). *Indian Drugs*, **38**, 156–159.
Sheldrick, G. M. (2008). *Acta Cryst.* **A64**, 112–122.
Spek, A. L. (2009). *Acta Cryst.* **D65**, 148–155.

supporting information

Acta Cryst. (2010). E66, o262 [https://doi.org/10.1107/S1600536809054713]

1-Dichloroacetyl-*r*-2,*c*-6-bis(4-methoxyphenyl)-*t*-3-methylpiperidin-4-one

K. Ravichandran, P. Ramesh, P. Sakthivel, S. Ponnuswamy and M. N. Ponnuswamy

S1. Comment

Piperidine derivatives are the valued heterocyclic compounds in the field of medicinal chemistry. piperidin-4-ones are reported to possess analgesic, anti-inflammatory, central nervous system (CNS), local anaesthetic, anticancer and antimicrobial activity (Perumal *et al.* (2001); Dimmock *et al.*, 2001). The crystallographic study of the title compound has been carried out to establish the molecular structure

The *ORTEP* diagram of the title compound is shown in Fig.1. The piperidine ring in the molecule adopts a distorted boat conformation with the puckering parameters (Cremer & Pople, 1975) and the asymmetry parameters (Nardelli, 1983) are: $q_2 = 0.685(3) \text{ \AA}$, $q_3 = 0.039(3) \text{ \AA}$, $\varphi_2 = 72.1(3)^\circ$ and $\Delta_s(\text{C2 \& C5}) = 14.9(3)^\circ$. The methoxy groups lie in the plane of phenyl rings and these phenyl rings are oriented at angles of $84.3(1)^\circ$ and $76.8(1)^\circ$ with best plane of piperidine ring. The sum of the bond angles around the atom N1 (359.7°) of the piperidine ring in the molecule is in accordance with sp^2 hybridization.

The crystal packing is stabilized by C—H \cdots O types of intra and intermolecular interactions, which link the molecules into a chain extending along the *c* axis. Atoms C6, C18 and C4 of the molecule at (*x*, *y*, *z*) donate a proton to trifurcated acceptor atom O1 of the molecule at (*x*, $1/2 - y$, $-1/2 + z$). Intermolecular interactions C6—H6 \cdots O1 and C18—H18 \cdots O1 form C5 & C7 zigzag chains (Bernstein *et al.*, 1995), whereas the other interaction C8—H8 \cdots O1 forms a C4 one-dimensional chain, running along the *c* axis, as shown in Fig. 2.

S2. Experimental

To a solution of *r*-2,*c*-6-bis(4-methoxyphenyl)-*t*-3-methylpiperidin-4-one (1.625 g) in anhydrous benzene (60 ml) was added triethylamine (2.1 ml) and dichloroacetylchloride (1.42 ml). The reaction mixture was allowed to stir at room temperature for 2hrs. The resulting solution was washed with sodium bicarbonate solution (10%) and water. The organic layer was dried over anhydrous sodium sulfate, evaporated and crystallized from benzene: pet-ether (60–80°C) in the ratio of 9:1.

S3. Refinement

H atoms were positioned geometrically (C—H = 0.93–0.98 Å) and allowed to ride on their parent atoms, with $1.5U_{eq}(\text{C})$ for methyl H and $1.2U_{eq}(\text{C})$ for other H atoms.

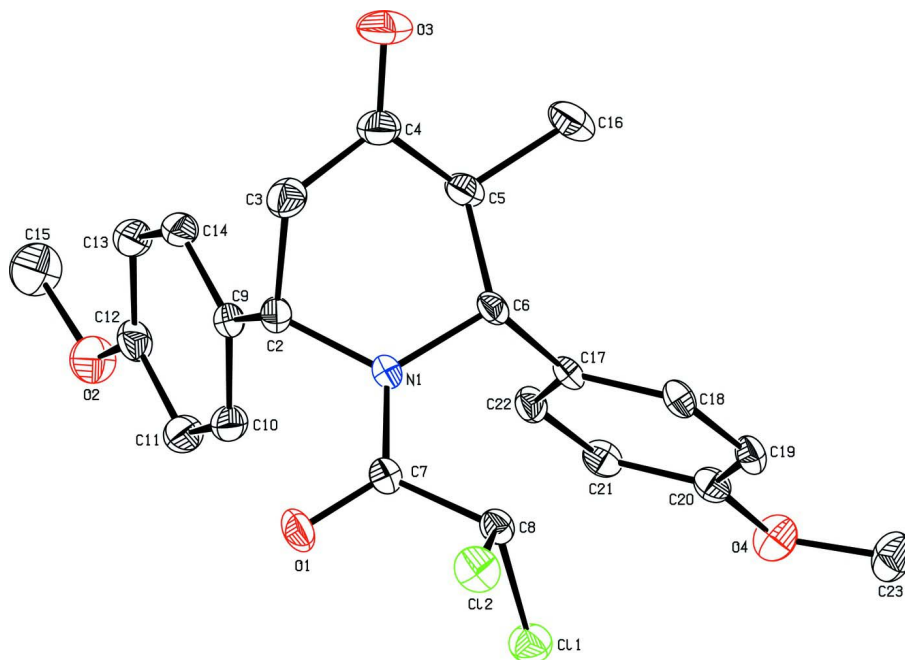


Figure 1

Perspective view of the molecule showing the thermal ellipsoids are drawn at 30% probability level. H atoms have been omitted for clarity.

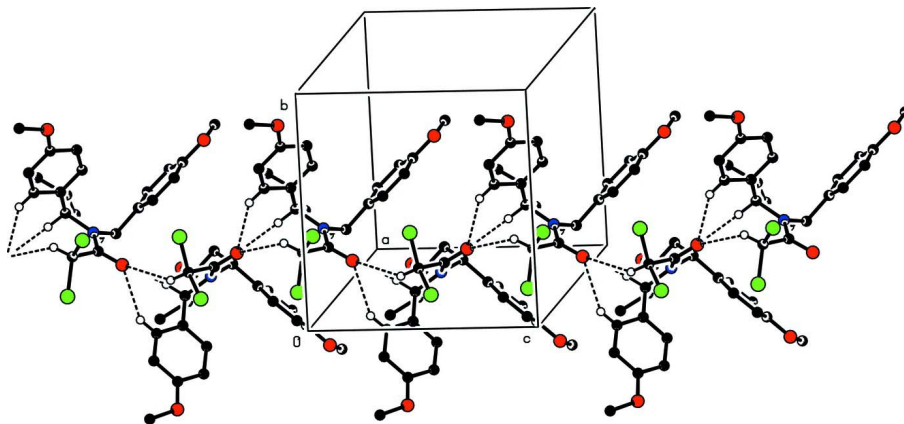


Figure 2

The crystal packing of the molecules viewed down a-axis. H atoms not involved in hydrogen bonding have been omitted for clarity.

1-Dichloroacetyl-*r*-2,*c*-6-bis(4-methoxyphenyl)-*t*-3-methylpiperidin-4-one

Crystal data

$C_{22}H_{23}Cl_2NO_4$

$M_r = 436.31$

Monoclinic, $P2_1/c$

Hall symbol: $-P\ 2_1/c$

$a = 19.3021(16)\ \text{\AA}$

$b = 10.5886(9)\ \text{\AA}$

$c = 10.3241(10)\ \text{\AA}$

$\beta = 91.445(5)^\circ$

$V = 2109.4(3)\ \text{\AA}^3$

$Z = 4$

$F(000) = 912$

$D_x = 1.374\ \text{Mg m}^{-3}$

Mo $K\alpha$ radiation, $\lambda = 0.71073\ \text{\AA}$

Cell parameters from 2564 reflections

$\theta = 1.1\text{--}28.7^\circ$
 $\mu = 0.34 \text{ mm}^{-1}$
 $T = 293 \text{ K}$

Block, colorless
 $0.25 \times 0.24 \times 0.23 \text{ mm}$

Data collection

Bruker SMART APEXII area-detector
 diffractometer
 Radiation source: fine-focus sealed tube
 Graphite monochromator
 ω and ϕ scans
 Absorption correction: multi-scan
 (SADABS; Bruker, 2008)
 $T_{\min} = 0.919$, $T_{\max} = 0.926$

17272 measured reflections
 5140 independent reflections
 2632 reflections with $I > 2\sigma(I)$
 $R_{\text{int}} = 0.050$
 $\theta_{\max} = 28.7^\circ$, $\theta_{\min} = 1.1^\circ$
 $h = -25 \rightarrow 25$
 $k = -13 \rightarrow 14$
 $l = -13 \rightarrow 10$

Refinement

Refinement on F^2
 Least-squares matrix: full
 $R[F^2 > 2\sigma(F^2)] = 0.055$
 $wR(F^2) = 0.210$
 $S = 1.05$
 5140 reflections
 265 parameters
 0 restraints
 Primary atom site location: structure-invariant
 direct methods

Secondary atom site location: difference Fourier
 map
 Hydrogen site location: inferred from
 neighbouring sites
 H-atom parameters constrained
 $w = 1/[\sigma^2(F_o^2) + (0.1035P)^2 + 0.3613P]$
 where $P = (F_o^2 + 2F_c^2)/3$
 $(\Delta/\sigma)_{\max} = 0.001$
 $\Delta\rho_{\max} = 0.37 \text{ e } \text{Å}^{-3}$
 $\Delta\rho_{\min} = -0.34 \text{ e } \text{Å}^{-3}$

Special details

Geometry. All e.s.d.'s (except the e.s.d. in the dihedral angle between two l.s. planes) are estimated using the full covariance matrix. The cell e.s.d.'s are taken into account individually in the estimation of e.s.d.'s in distances, angles and torsion angles; correlations between e.s.d.'s in cell parameters are only used when they are defined by crystal symmetry. An approximate (isotropic) treatment of cell e.s.d.'s is used for estimating e.s.d.'s involving l.s. planes.

Refinement. Refinement of F^2 against ALL reflections. The weighted R -factor wR and goodness of fit S are based on F^2 , conventional R -factors R are based on F , with F set to zero for negative F^2 . The threshold expression of $F^2 > \sigma(F^2)$ is used only for calculating R -factors(gt) etc. and is not relevant to the choice of reflections for refinement. R -factors based on F^2 are statistically about twice as large as those based on F , and R -factors based on ALL data will be even larger.

Fractional atomic coordinates and isotropic or equivalent isotropic displacement parameters (Å^2)

	x	y	z	$U_{\text{iso}}^*/U_{\text{eq}}$
Cl1	0.06236 (4)	0.37763 (8)	0.02208 (10)	0.0600 (3)
Cl2	0.10261 (5)	0.12850 (8)	-0.06850 (10)	0.0618 (3)
O1	0.18680 (12)	0.2296 (2)	0.1496 (2)	0.0611 (7)
O2	0.37098 (13)	0.6870 (3)	0.4740 (3)	0.0714 (8)
O3	0.43242 (15)	0.3729 (4)	-0.1711 (4)	0.1125 (13)
O4	0.06912 (12)	0.8442 (2)	-0.1071 (3)	0.0607 (7)
N1	0.24905 (12)	0.3470 (2)	0.0117 (2)	0.0378 (6)
C2	0.31270 (15)	0.3183 (3)	0.0888 (3)	0.0433 (8)
H2	0.3025	0.2422	0.1388	0.052*
C3	0.36826 (17)	0.2806 (3)	-0.0059 (4)	0.0568 (9)
H3A	0.4110	0.2633	0.0423	0.068*
H3B	0.3541	0.2032	-0.0493	0.068*
C4	0.38194 (18)	0.3784 (4)	-0.1054 (4)	0.0617 (10)

C5	0.32820 (16)	0.4799 (3)	-0.1204 (3)	0.0481 (8)
H5	0.3364	0.5402	-0.0496	0.058*
C6	0.25383 (14)	0.4284 (3)	-0.1064 (3)	0.0379 (7)
H6	0.2431	0.3755	-0.1821	0.046*
C7	0.19106 (15)	0.2871 (3)	0.0469 (3)	0.0407 (7)
C8	0.12870 (15)	0.2872 (3)	-0.0465 (3)	0.0413 (7)
H8	0.1416	0.3238	-0.1297	0.050*
C9	0.33116 (14)	0.4193 (3)	0.1869 (3)	0.0424 (7)
C10	0.28014 (16)	0.4676 (3)	0.2662 (3)	0.0502 (8)
H10	0.2348	0.4393	0.2548	0.060*
C11	0.29471 (17)	0.5556 (4)	0.3605 (3)	0.0562 (9)
H11	0.2595	0.5863	0.4117	0.067*
C12	0.36200 (18)	0.5987 (3)	0.3792 (3)	0.0530 (9)
C13	0.41367 (17)	0.5519 (4)	0.3030 (4)	0.0584 (10)
H13	0.4591	0.5795	0.3151	0.070*
C14	0.39748 (16)	0.4635 (4)	0.2082 (3)	0.0543 (9)
H14	0.4327	0.4328	0.1571	0.065*
C15	0.4393 (2)	0.7283 (4)	0.5030 (5)	0.0878 (14)
H15A	0.4678	0.6569	0.5255	0.132*
H15B	0.4389	0.7863	0.5744	0.132*
H15C	0.4577	0.7698	0.4286	0.132*
C16	0.3347 (2)	0.5526 (4)	-0.2460 (4)	0.0691 (11)
H16A	0.3821	0.5770	-0.2566	0.104*
H16B	0.3061	0.6267	-0.2436	0.104*
H16C	0.3199	0.5001	-0.3173	0.104*
C17	0.20227 (14)	0.5359 (3)	-0.1064 (3)	0.0348 (7)
C18	0.15426 (15)	0.5514 (3)	-0.2067 (3)	0.0399 (7)
H18	0.1529	0.4928	-0.2738	0.048*
C19	0.10828 (16)	0.6511 (3)	-0.2103 (3)	0.0428 (7)
H19	0.0759	0.6581	-0.2781	0.051*
C20	0.11057 (16)	0.7406 (3)	-0.1126 (3)	0.0425 (7)
C21	0.15861 (16)	0.7270 (3)	-0.0128 (3)	0.0456 (8)
H21	0.1608	0.7871	0.0528	0.055*
C22	0.20341 (16)	0.6263 (3)	-0.0083 (3)	0.0419 (7)
H22	0.2348	0.6183	0.0610	0.050*
C23	0.0234 (2)	0.8678 (3)	-0.2145 (5)	0.0703 (11)
H23A	0.0497	0.8761	-0.2917	0.105*
H23B	-0.0018	0.9444	-0.1999	0.105*
H23C	-0.0085	0.7987	-0.2243	0.105*

Atomic displacement parameters (Å²)

	U^{11}	U^{22}	U^{33}	U^{12}	U^{13}	U^{23}
C11	0.0590 (5)	0.0573 (5)	0.0641 (7)	0.0081 (4)	0.0103 (4)	0.0020 (4)
C12	0.0749 (6)	0.0441 (5)	0.0665 (7)	-0.0149 (4)	0.0003 (5)	-0.0053 (4)
O1	0.0674 (15)	0.0703 (16)	0.0452 (15)	-0.0148 (12)	-0.0051 (12)	0.0270 (13)
O2	0.0731 (17)	0.0837 (18)	0.0570 (18)	-0.0107 (14)	-0.0054 (14)	-0.0164 (15)
O3	0.0646 (18)	0.161 (3)	0.114 (3)	0.0281 (19)	0.0481 (19)	0.042 (2)

O4	0.0657 (15)	0.0398 (12)	0.076 (2)	0.0079 (11)	-0.0022 (14)	-0.0061 (12)
N1	0.0424 (13)	0.0422 (14)	0.0288 (15)	0.0000 (11)	0.0011 (11)	0.0049 (11)
C2	0.0434 (17)	0.0500 (18)	0.037 (2)	0.0071 (14)	-0.0012 (14)	0.0052 (15)
C3	0.0512 (19)	0.068 (2)	0.051 (2)	0.0129 (17)	0.0018 (16)	-0.0085 (19)
C4	0.0458 (19)	0.088 (3)	0.052 (2)	-0.0024 (18)	0.0091 (17)	-0.006 (2)
C5	0.0497 (18)	0.058 (2)	0.037 (2)	-0.0090 (15)	0.0100 (14)	-0.0009 (16)
C6	0.0457 (16)	0.0459 (17)	0.0223 (16)	-0.0058 (13)	0.0028 (12)	-0.0004 (13)
C7	0.0467 (17)	0.0386 (16)	0.0367 (19)	-0.0007 (13)	0.0002 (14)	0.0030 (14)
C8	0.0463 (16)	0.0394 (15)	0.0382 (19)	-0.0059 (13)	0.0011 (14)	0.0018 (13)
C9	0.0397 (16)	0.0568 (19)	0.0307 (18)	0.0009 (14)	-0.0018 (13)	0.0029 (15)
C10	0.0420 (17)	0.068 (2)	0.041 (2)	-0.0006 (15)	-0.0010 (14)	-0.0059 (17)
C11	0.0478 (19)	0.077 (2)	0.043 (2)	0.0032 (17)	0.0017 (15)	-0.0102 (19)
C12	0.060 (2)	0.065 (2)	0.033 (2)	-0.0035 (17)	-0.0043 (16)	-0.0014 (17)
C13	0.0459 (19)	0.083 (3)	0.046 (2)	-0.0115 (18)	-0.0030 (16)	0.001 (2)
C14	0.0411 (17)	0.083 (3)	0.038 (2)	-0.0005 (17)	0.0037 (14)	-0.0004 (19)
C15	0.086 (3)	0.098 (3)	0.078 (3)	-0.025 (3)	-0.013 (3)	-0.022 (3)
C16	0.079 (3)	0.078 (3)	0.051 (3)	-0.019 (2)	0.019 (2)	0.010 (2)
C17	0.0474 (16)	0.0344 (15)	0.0228 (16)	-0.0052 (12)	0.0054 (12)	0.0021 (12)
C18	0.0579 (18)	0.0344 (15)	0.0276 (18)	-0.0022 (13)	0.0029 (14)	-0.0015 (13)
C19	0.0543 (18)	0.0383 (16)	0.0356 (19)	-0.0048 (13)	-0.0026 (14)	0.0099 (14)
C20	0.0512 (17)	0.0336 (16)	0.043 (2)	-0.0036 (13)	0.0078 (15)	0.0030 (14)
C21	0.0567 (18)	0.0443 (17)	0.036 (2)	-0.0033 (15)	0.0074 (15)	-0.0106 (15)
C22	0.0478 (17)	0.0485 (18)	0.0294 (18)	-0.0010 (14)	-0.0010 (13)	-0.0004 (14)
C23	0.068 (2)	0.051 (2)	0.090 (3)	0.0093 (18)	-0.012 (2)	0.014 (2)

Geometric parameters (Å, °)

C11—C8	1.762 (3)	C10—C11	1.372 (5)
C12—C8	1.768 (3)	C10—H10	0.9300
O1—C7	1.228 (4)	C11—C12	1.385 (4)
O2—C12	1.362 (4)	C11—H11	0.9300
O2—C15	1.415 (4)	C12—C13	1.378 (5)
O3—C4	1.203 (4)	C13—C14	1.383 (5)
O4—C20	1.360 (4)	C13—H13	0.9300
O4—C23	1.422 (4)	C14—H14	0.9300
N1—C7	1.344 (4)	C15—H15A	0.9600
N1—C2	1.479 (4)	C15—H15B	0.9600
N1—C6	1.498 (4)	C15—H15C	0.9600
C2—C9	1.509 (4)	C16—H16A	0.9600
C2—C3	1.523 (4)	C16—H16B	0.9600
C2—H2	0.9800	C16—H16C	0.9600
C3—C4	1.487 (5)	C17—C18	1.382 (4)
C3—H3A	0.9700	C17—C22	1.394 (4)
C3—H3B	0.9700	C18—C19	1.379 (4)
C4—C5	1.499 (5)	C18—H18	0.9300
C5—C16	1.516 (5)	C19—C20	1.384 (4)
C5—C6	1.546 (4)	C19—H19	0.9300
C5—H5	0.9800	C20—C21	1.377 (4)

C6—C17	1.512 (4)	C21—C22	1.372 (4)
C6—H6	0.9800	C21—H21	0.9300
C7—C8	1.523 (4)	C22—H22	0.9300
C8—H8	0.9800	C23—H23A	0.9600
C9—C14	1.375 (4)	C23—H23B	0.9600
C9—C10	1.393 (4)	C23—H23C	0.9600
C12—O2—C15	117.7 (3)	C10—C11—H11	120.1
C20—O4—C23	117.6 (3)	C12—C11—H11	120.1
C7—N1—C2	116.4 (2)	O2—C12—C13	125.2 (3)
C7—N1—C6	124.0 (2)	O2—C12—C11	115.3 (3)
C2—N1—C6	119.3 (2)	C13—C12—C11	119.4 (3)
N1—C2—C9	113.3 (2)	C12—C13—C14	119.5 (3)
N1—C2—C3	107.3 (3)	C12—C13—H13	120.2
C9—C2—C3	117.3 (3)	C14—C13—H13	120.2
N1—C2—H2	106.1	C9—C14—C13	122.4 (3)
C9—C2—H2	106.1	C9—C14—H14	118.8
C3—C2—H2	106.1	C13—C14—H14	118.8
C4—C3—C2	113.6 (3)	O2—C15—H15A	109.5
C4—C3—H3A	108.8	O2—C15—H15B	109.5
C2—C3—H3A	108.8	H15A—C15—H15B	109.5
C4—C3—H3B	108.8	O2—C15—H15C	109.5
C2—C3—H3B	108.8	H15A—C15—H15C	109.5
H3A—C3—H3B	107.7	H15B—C15—H15C	109.5
O3—C4—C3	121.1 (4)	C5—C16—H16A	109.5
O3—C4—C5	123.0 (4)	C5—C16—H16B	109.5
C3—C4—C5	115.9 (3)	H16A—C16—H16B	109.5
C4—C5—C16	112.4 (3)	C5—C16—H16C	109.5
C4—C5—C6	112.3 (3)	H16A—C16—H16C	109.5
C16—C5—C6	110.9 (3)	H16B—C16—H16C	109.5
C4—C5—H5	107.0	C18—C17—C22	117.5 (3)
C16—C5—H5	107.0	C18—C17—C6	121.2 (3)
C6—C5—H5	107.0	C22—C17—C6	121.3 (3)
N1—C6—C17	112.3 (2)	C19—C18—C17	122.0 (3)
N1—C6—C5	110.8 (2)	C19—C18—H18	119.0
C17—C6—C5	110.3 (2)	C17—C18—H18	119.0
N1—C6—H6	107.7	C18—C19—C20	119.7 (3)
C17—C6—H6	107.7	C18—C19—H19	120.1
C5—C6—H6	107.7	C20—C19—H19	120.1
O1—C7—N1	122.8 (3)	O4—C20—C21	116.0 (3)
O1—C7—C8	118.6 (3)	O4—C20—C19	125.1 (3)
N1—C7—C8	118.6 (3)	C21—C20—C19	118.9 (3)
C7—C8—C11	108.5 (2)	C22—C21—C20	121.3 (3)
C7—C8—C12	107.4 (2)	C22—C21—H21	119.4
C11—C8—C12	111.14 (16)	C20—C21—H21	119.4
C7—C8—H8	109.9	C21—C22—C17	120.7 (3)
C11—C8—H8	109.9	C21—C22—H22	119.7
C12—C8—H8	109.9	C17—C22—H22	119.7

C14—C9—C10	116.7 (3)	O4—C23—H23A	109.5
C14—C9—C2	123.5 (3)	O4—C23—H23B	109.5
C10—C9—C2	119.7 (3)	H23A—C23—H23B	109.5
C11—C10—C9	122.1 (3)	O4—C23—H23C	109.5
C11—C10—H10	119.0	H23A—C23—H23C	109.5
C9—C10—H10	119.0	H23B—C23—H23C	109.5
C10—C11—C12	119.8 (3)		
C7—N1—C2—C9	-101.3 (3)	N1—C2—C9—C10	46.9 (4)
C6—N1—C2—C9	84.8 (3)	C3—C2—C9—C10	172.8 (3)
C7—N1—C2—C3	127.6 (3)	C14—C9—C10—C11	0.5 (5)
C6—N1—C2—C3	-46.3 (3)	C2—C9—C10—C11	177.3 (3)
N1—C2—C3—C4	57.2 (4)	C9—C10—C11—C12	-0.2 (6)
C9—C2—C3—C4	-71.6 (4)	C15—O2—C12—C13	-4.4 (6)
C2—C3—C4—O3	166.1 (4)	C15—O2—C12—C11	176.0 (3)
C2—C3—C4—C5	-15.7 (4)	C10—C11—C12—O2	179.3 (3)
O3—C4—C5—C16	14.5 (5)	C10—C11—C12—C13	-0.3 (6)
C3—C4—C5—C16	-163.6 (3)	O2—C12—C13—C14	-179.0 (3)
O3—C4—C5—C6	140.2 (4)	C11—C12—C13—C14	0.6 (6)
C3—C4—C5—C6	-37.8 (4)	C10—C9—C14—C13	-0.2 (5)
C7—N1—C6—C17	57.7 (4)	C2—C9—C14—C13	-176.9 (3)
C2—N1—C6—C17	-128.9 (3)	C12—C13—C14—C9	-0.3 (6)
C7—N1—C6—C5	-178.4 (3)	N1—C6—C17—C18	-122.7 (3)
C2—N1—C6—C5	-5.1 (4)	C5—C6—C17—C18	113.1 (3)
C4—C5—C6—N1	48.3 (4)	N1—C6—C17—C22	60.2 (3)
C16—C5—C6—N1	174.9 (3)	C5—C6—C17—C22	-64.0 (3)
C4—C5—C6—C17	173.3 (3)	C22—C17—C18—C19	-0.8 (4)
C16—C5—C6—C17	-60.1 (3)	C6—C17—C18—C19	-178.0 (3)
C2—N1—C7—O1	12.7 (4)	C17—C18—C19—C20	1.4 (4)
C6—N1—C7—O1	-173.7 (3)	C23—O4—C20—C21	174.2 (3)
C2—N1—C7—C8	-165.4 (3)	C23—O4—C20—C19	-5.0 (4)
C6—N1—C7—C8	8.2 (4)	C18—C19—C20—O4	178.5 (3)
O1—C7—C8—C11	69.3 (3)	C18—C19—C20—C21	-0.7 (4)
N1—C7—C8—C11	-112.5 (3)	O4—C20—C21—C22	-179.8 (3)
O1—C7—C8—C12	-50.9 (3)	C19—C20—C21—C22	-0.6 (4)
N1—C7—C8—C12	127.3 (3)	C20—C21—C22—C17	1.2 (4)
N1—C2—C9—C14	-136.5 (3)	C18—C17—C22—C21	-0.5 (4)
C3—C2—C9—C14	-10.6 (5)	C6—C17—C22—C21	176.7 (3)

Hydrogen-bond geometry (\AA , $^\circ$)

$D-H\cdots A$	$D-H$	$H\cdots A$	$D\cdots A$	$D-H\cdots A$
C6—H6 \cdots O1 ⁱ	0.98	2.31	3.264 (4)	164
C8—H8 \cdots O1 ⁱ	0.98	2.52	3.363 (4)	144
C18—H18 \cdots O1 ⁱ	0.93	2.57	3.391 (4)	147

Symmetry code: (i) $x, -y+1/2, z-1/2$.