

Acta Crystallographica Section E

## Structure Reports

Online

ISSN 1600-5368

## 3-Acetyl-6-chloro-2-methyl-4-phenyl-quinolinium perchlorate

Tara Shahani,<sup>a</sup> Hoong-Kun Fun,<sup>a\*‡</sup> S. Sarveswari,<sup>b</sup>  
V. Vijayakumar<sup>b</sup> and B. Palakshi Reddy<sup>b</sup><sup>a</sup>X-ray Crystallography Unit, School of Physics, Universiti Sains Malaysia, 11800 USM, Penang, Malaysia, and <sup>b</sup>Organic Chemistry Division, School of Advanced Sciences, VIT University, Vellore 632 014, India

Correspondence e-mail: hkfun@usm.my

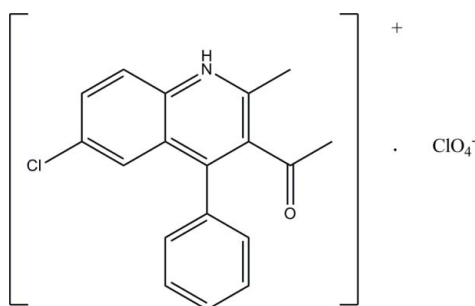
Received 5 April 2010; accepted 7 April 2010

Key indicators: single-crystal X-ray study;  $T = 100$  K; mean  $\sigma(\text{C}-\text{C}) = 0.001$  Å;  $R$  factor = 0.031;  $wR$  factor = 0.108; data-to-parameter ratio = 25.4.

In the title molecular salt,  $\text{C}_{18}\text{H}_{15}\text{ClNO}^+\cdot\text{ClO}_4^-$ , the quinolinium ring system is approximately planar, with a maximum deviation of 0.027 (1) Å. The dihedral angle formed between the mean planes of the quinolinium ring system and the benzene ring is 78.46 (3)°. In the crystal structure, intermolecular  $\text{N}-\text{H}\cdots\text{O}$  and  $\text{C}-\text{H}\cdots\text{O}$  hydrogen bonds link the cations and anions into a three-dimensional network. The crystal structure is further consolidated by  $\text{C}-\text{H}\cdots\pi$  interactions.

## Related literature

For natural products containing quinolines, see: Michael (1997); Morimoto *et al.* (1991). For the biological activities of quinolines, see: Campbell *et al.* (1988); Markees *et al.* (1970). For the physiological activities of quinolines, see: Katritzky & Arend (1998); Jiang & Si (2002). For related structures, see: Shahani *et al.* (2010); Fun *et al.* (2009); Loh *et al.* (2010). For bond-length data, see: Allen *et al.* (1987). For the stability of the temperature controller used for the data collection, see: Cosier & Glazer (1986).



‡ Thomson Reuters ResearcherID: A-3561-2009.

## Experimental

## Crystal data

$\text{C}_{18}\text{H}_{15}\text{ClNO}^+\cdot\text{ClO}_4^-$   
 $M_r = 396.21$   
 Triclinic,  $P\bar{1}$   
 $a = 7.3862$  (1) Å  
 $b = 8.8519$  (2) Å  
 $c = 13.3378$  (3) Å  
 $\alpha = 92.477$  (1)°  
 $\beta = 91.903$  (1)°  
 $\gamma = 99.550$  (1)°  
 $V = 858.44$  (3) Å<sup>3</sup>  
 $Z = 2$   
 Mo  $K\alpha$  radiation  
 $\mu = 0.41$  mm<sup>-1</sup>  
 $T = 100$  K  
 $0.58 \times 0.54 \times 0.27$  mm

## Data collection

Bruker SMART APEXII CCD diffractometer  
 Absorption correction: multi-scan (SADABS; Bruker, 2009)  
 $T_{\min} = 0.797$ ,  $T_{\max} = 0.898$   
 27967 measured reflections  
 7482 independent reflections  
 6933 reflections with  $I > 2\sigma(I)$   
 $R_{\text{int}} = 0.019$

## Refinement

$R[F^2 > 2\sigma(F^2)] = 0.031$   
 $wR(F^2) = 0.108$   
 $S = 1.09$   
 7482 reflections  
 295 parameters  
 All H-atom parameters refined  
 $\Delta\rho_{\text{max}} = 0.69$  e Å<sup>-3</sup>  
 $\Delta\rho_{\text{min}} = -1.00$  e Å<sup>-3</sup>

Table 1

Hydrogen-bond geometry (Å, °).

Cg1 is the centroid of the C10–C15 ring.

$D-\text{H}\cdots A$	$D-\text{H}$	$\text{H}\cdots A$	$D\cdots A$	$D-\text{H}\cdots A$
$\text{N1}-\text{H1N1}\cdots\text{O3}^{\text{i}}$	0.832 (18)	1.896 (18)	2.7177 (10)	169 (2)
$\text{C3}-\text{H3A}\cdots\text{O2}^{\text{ii}}$	0.955 (16)	2.583 (16)	3.3010 (11)	132.2 (12)
$\text{C15}-\text{H15A}\cdots\text{O5}$	0.951 (16)	2.512 (16)	3.3716 (12)	150.4 (13)
$\text{C18}-\text{H18B}\cdots\text{O5}^{\text{iii}}$	0.97 (2)	2.53 (2)	3.3266 (13)	139.5 (14)
$\text{C12}-\text{H12A}\cdots\text{Cg1}^{\text{iv}}$	0.981 (17)	2.694 (17)	3.5810 (10)	150.6 (13)

Symmetry codes: (i)  $-x, -y, -z + 1$ ; (ii)  $x, y - 1, z$ ; (iii)  $x - 1, y, z$ ; (iv)  $-x, -y, -z$ .

Data collection: APEX2 (Bruker, 2009); cell refinement: SAINT (Bruker, 2009); data reduction: SAINT; program(s) used to solve structure: SHELXTL (Sheldrick, 2008); program(s) used to refine structure: SHELXTL; molecular graphics: SHELXTL; software used to prepare material for publication: SHELXTL and PLATON (Spek, 2009).

TSH and HKF thank the Universiti Sains Malaysia (USM) for Research University Golden Goose grant No. 1001/PFIZIK/811012. VV is grateful to the DST, India, for funding through the Young Scientist Scheme (Fast Track Proposal).

Supplementary data and figures for this paper are available from the IUCr electronic archives (Reference: HB5397).

## References

- Allen, F. H., Kennard, O., Watson, D. G., Brammer, L., Orpen, A. G. & Taylor, R. (1987). *J. Chem. Soc. Perkin Trans. 2*, pp. S1–19.  
 Bruker (2009). SADABS, APEX2 and SAINT. Bruker AXS Inc., Madison, Wisconsin, USA.  
 Campbell, S. F., Hardstone, J. D. & Palmer, M. J. (1988). *J. Med. Chem.* **31**, 1031–1035.  
 Cosier, J. & Glazer, A. M. (1986). *J. Appl. Cryst.* **19**, 105–107.  
 Fun, H.-K., Loh, W.-S., Sarveswari, S., Vijayakumar, V. & Reddy, B. P. (2009). *Acta Cryst.* **E65**, o2688–o2689.  
 Jiang, B. & Si, Y. G. (2002). *J. Org. Chem.* **67**, 9449–9451.  
 Katritzky, A. R. & Arend, M. I. (1998). *J. Org. Chem.* **63**, 9989–9991.

- Loh, W.-S., Fun, H.-K., Sarveswari, S., Vijayakumar, V. & Reddy, B. P. (2010). *Acta Cryst.* **E66**, o91–o92.
- Markees, D. G., Dewey, V. C. & Kidder, G. W. (1970). *J. Med. Chem.* **13**, 324–326.
- Michael, J. P. (1997). *Nat. Prod. Rep.* **14**, 605–608.
- Shahani, T., Fun, H.-K., Sarveswari, S., Vijayakumar, V. & Ragavan, R. V. (2010). *Acta Cryst.* **E66**, o374.
- Morimoto, Y., Matsuda, F. & Shirahama, H. (1991). *Synlett*, **3**, 202–203.
- Sheldrick, G. M. (2008). *Acta Cryst.* **A64**, 112–122.
- Spek, A. L. (2009). *Acta Cryst.* **D65**, 148–155.

## supporting information

*Acta Cryst.* (2010). E66, o1192–o1193 [https://doi.org/10.1107/S1600536810012900]

**3-Acetyl-6-chloro-2-methyl-4-phenylquinolinium perchlorate**

**Tara Shahani, Hoong-Kun Fun, S. Sarveswari, V. Vijayakumar and B. Palakshi Reddy**

**S1. Comment**

Quinolines and their derivatives are very important compounds because of their wide occurrence in natural products (Morimoto *et al.*, 1991; Michael, 1997), and biologically active compounds (Markees *et al.*, 1970 ; Campbell *et al.*, 1988). A large variety of quinolines have interesting physiological activities and found attractive applications as pharmaceuticals, agrochemicals and as synthetic building blocks, due to their great importance, the synthesis of new derivatives of quinoline remains an active research area (Katritzky & Arend, 1998; Jiang & Si, 2002).

In the title compound (Fig. 1), the asymmetric unit consists one perchlorate anion and one 3-acetyl-6-chloro-2-methyl-4-phenylquinoline-1-ium cation. The quinolinium ring system (C1/N1/C2–C9) is approximately planar, with a maximum deviation of 0.027 (1) Å at atom C1. The dihedral angle formed between quinolinium ring system and benzene ring (C10–C15) is 78.46 (3)°. Bond lengths (Allen *et al.*, 1987) and angles are normal and comparable to those related structures (Shahani *et al.*, 2010; Fun *et al.*, 2009; Loh *et al.*, 2010).

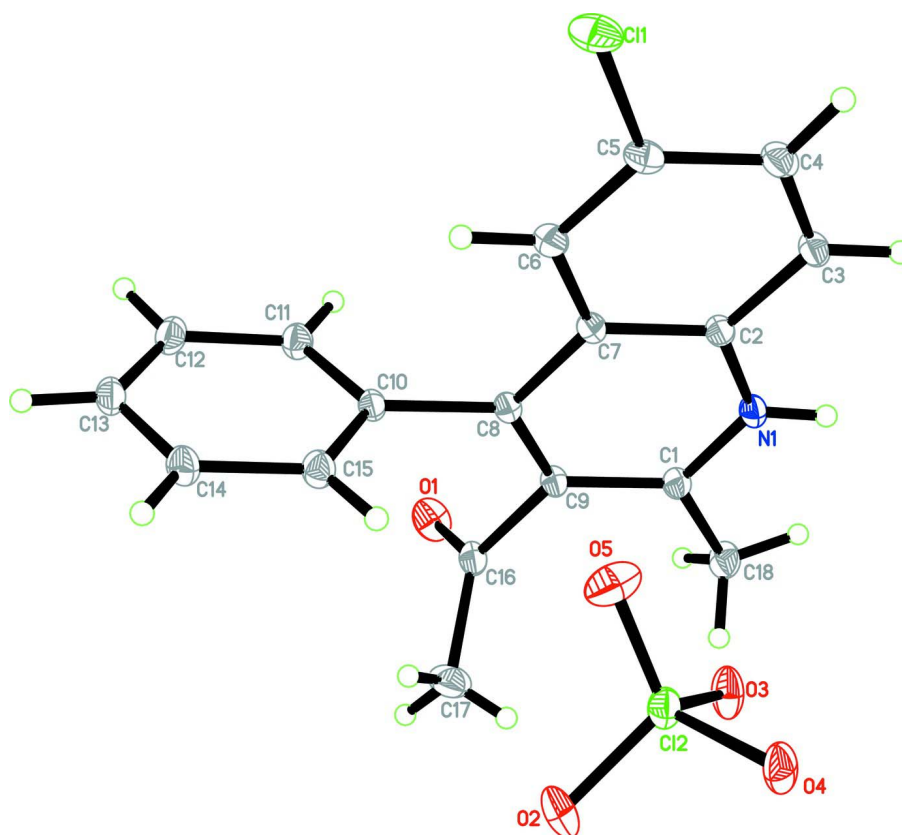
In the crystal packing (Fig. 2), intermolecular N1—H1N1···O3, C3—H3A···O2, C15—H15A···O5 and C18—H18B···O5 hydrogen bonds (Table 1) link the molecules into three-dimensional network. This crystal structure is further consolidated by C—H··· $\pi$  interactions involving C10–C15 benzene ring (centroid Cg1).

**S2. Experimental**

A mixture of 3-acetyl-6-chloro-2-methyl-4-phenylquinoline and a catalytic amount of nickel chloride in acid medium was refluxed for about an hour and resultant compound was recrystallized from 3:1 ethanol water to yield colourless blocks of (I).

**S3. Refinement**

All H atoms were located in a difference map and was refined freely. [N—H = 0.829 (19) Å, C—H = 0.76 (2)–1.025 (17) Å].



**Figure 1**

The molecular structure of (I), showing 50% probability displacement ellipsoids.

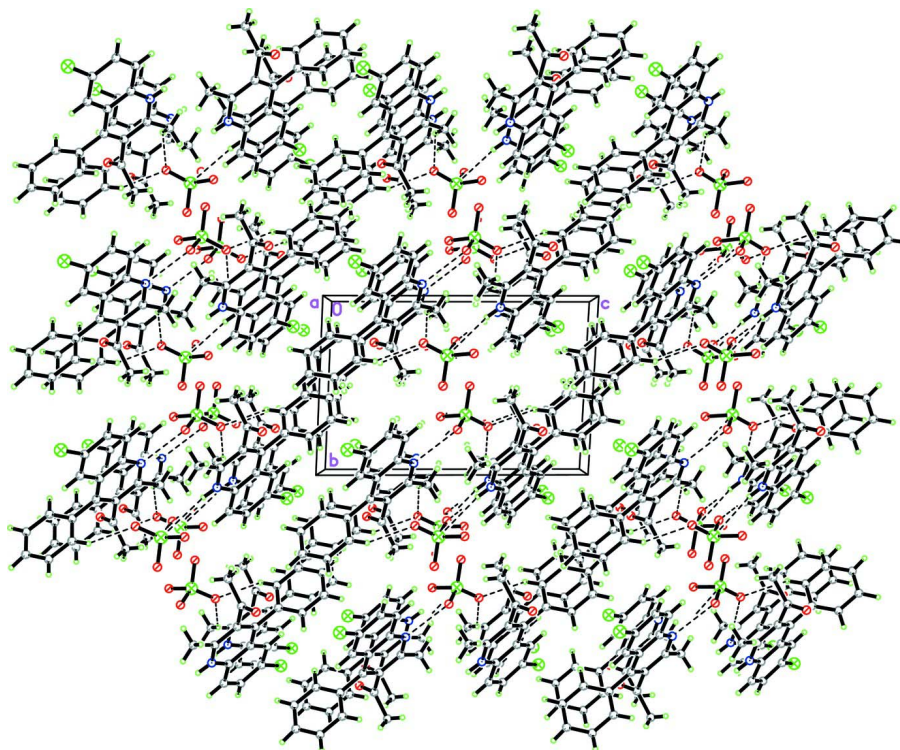


Figure 2

The crystal packing of (I), viewed along  $a$  axis. H atoms not involved in intermolecular interactions (dashed lines) are omitted for clarity.

### 3-Acetyl-6-chloro-2-methyl-4-phenylquinolinium perchlorate

#### Crystal data

$C_{18}H_{15}ClNO^+ \cdot ClO_4^-$

$M_r = 396.21$

Triclinic,  $P\bar{1}$

Hall symbol: -P 1

$a = 7.3862$  (1) Å

$b = 8.8519$  (2) Å

$c = 13.3378$  (3) Å

$\alpha = 92.477$  (1)°

$\beta = 91.903$  (1)°

$\gamma = 99.550$  (1)°

$V = 858.44$  (3) Å<sup>3</sup>

$Z = 2$

$F(000) = 408$

$D_x = 1.533$  Mg m<sup>-3</sup>

Mo  $K\alpha$  radiation,  $\lambda = 0.71073$  Å

Cell parameters from 9929 reflections

$\theta = 2.7\text{--}35.1^\circ$

$\mu = 0.41$  mm<sup>-1</sup>

$T = 100$  K

Block, colourless

$0.58 \times 0.54 \times 0.27$  mm

#### Data collection

Bruker SMART APEXII CCD

diffractometer

Radiation source: fine-focus sealed tube

Graphite monochromator

$\varphi$  and  $\omega$  scans

Absorption correction: multi-scan

(*SADABS*; Bruker, 2009)

$T_{\min} = 0.797$ ,  $T_{\max} = 0.898$

27967 measured reflections

7482 independent reflections

6933 reflections with  $I > 2\sigma(I)$

$R_{\text{int}} = 0.019$

$\theta_{\max} = 35.0^\circ$ ,  $\theta_{\min} = 1.5^\circ$

$h = -11 \rightarrow 11$

$k = -13 \rightarrow 14$

$l = -21 \rightarrow 21$

*Refinement*

Refinement on  $F^2$   
 Least-squares matrix: full  
 $R[F^2 > 2\sigma(F^2)] = 0.031$   
 $wR(F^2) = 0.108$   
 $S = 1.09$   
 7482 reflections  
 295 parameters  
 0 restraints  
 Primary atom site location: structure-invariant  
 direct methods

Secondary atom site location: difference Fourier  
 map  
 Hydrogen site location: inferred from  
 neighbouring sites  
 All H-atom parameters refined  
 $w = 1/[\sigma^2(F_o^2) + (0.0636P)^2 + 0.2949P]$   
 where  $P = (F_o^2 + 2F_c^2)/3$   
 $(\Delta/\sigma)_{\max} < 0.001$   
 $\Delta\rho_{\max} = 0.69 \text{ e } \text{\AA}^{-3}$   
 $\Delta\rho_{\min} = -1.00 \text{ e } \text{\AA}^{-3}$

*Special details*

**Experimental.** The crystal was placed in the cold stream of an Oxford Cyrosystems Cobra open-flow nitrogen cryostat (Cosier & Glazer, 1986) operating at 100.0 (1) K.

**Geometry.** All esds (except the esd in the dihedral angle between two l.s. planes) are estimated using the full covariance matrix. The cell esds are taken into account individually in the estimation of esds in distances, angles and torsion angles; correlations between esds in cell parameters are only used when they are defined by crystal symmetry. An approximate (isotropic) treatment of cell esds is used for estimating esds involving l.s. planes.

**Refinement.** Refinement of  $F^2$  against ALL reflections. The weighted  $R$ -factor  $wR$  and goodness of fit  $S$  are based on  $F^2$ , conventional  $R$ -factors  $R$  are based on  $F$ , with  $F$  set to zero for negative  $F^2$ . The threshold expression of  $F^2 > \sigma(F^2)$  is used only for calculating  $R$ -factors(gt) etc. and is not relevant to the choice of reflections for refinement.  $R$ -factors based on  $F^2$  are statistically about twice as large as those based on  $F$ , and  $R$ -factors based on ALL data will be even larger.

*Fractional atomic coordinates and isotropic or equivalent isotropic displacement parameters ( $\text{\AA}^2$ )*

	<i>x</i>	<i>y</i>	<i>z</i>	$U_{\text{iso}}^*/U_{\text{eq}}$
C11	0.57962 (3)	-0.15711 (3)	0.127788 (19)	0.01984 (6)
O1	-0.34868 (10)	0.25202 (9)	0.18488 (6)	0.02125 (14)
N1	-0.06256 (10)	-0.06546 (8)	0.35547 (5)	0.01256 (12)
C1	-0.15762 (11)	0.04733 (9)	0.34086 (6)	0.01226 (13)
C2	0.08539 (11)	-0.08886 (9)	0.30060 (6)	0.01178 (13)
C3	0.17738 (12)	-0.21217 (10)	0.32169 (6)	0.01442 (14)
C4	0.32724 (13)	-0.23218 (10)	0.26722 (7)	0.01553 (14)
C5	0.38693 (12)	-0.12954 (10)	0.19231 (7)	0.01427 (14)
C6	0.29771 (11)	-0.01015 (9)	0.16974 (6)	0.01300 (13)
C7	0.14195 (11)	0.01160 (9)	0.22419 (6)	0.01113 (12)
C8	0.03934 (11)	0.13153 (9)	0.20510 (6)	0.01083 (12)
C9	-0.10849 (11)	0.14720 (9)	0.26283 (6)	0.01146 (12)
C10	0.09383 (11)	0.23714 (9)	0.12361 (6)	0.01128 (12)
C11	-0.00355 (12)	0.21724 (10)	0.03113 (6)	0.01471 (14)
C12	0.05201 (13)	0.31380 (11)	-0.04601 (7)	0.01646 (15)
C13	0.20163 (13)	0.43138 (10)	-0.03026 (7)	0.01619 (15)
C14	0.29697 (13)	0.45204 (10)	0.06228 (7)	0.01649 (15)
C15	0.24533 (12)	0.35437 (10)	0.13932 (6)	0.01454 (14)
C16	-0.21861 (12)	0.27461 (10)	0.24424 (6)	0.01340 (13)
C17	-0.15358 (17)	0.42459 (12)	0.30030 (8)	0.02276 (18)
C18	-0.31035 (13)	0.06418 (11)	0.40871 (7)	0.01699 (15)
H3A	0.137 (2)	-0.2799 (18)	0.3733 (12)	0.017 (3)*
H4A	0.394 (3)	-0.310 (2)	0.2795 (13)	0.029 (4)*

H6A	0.343 (2)	0.0569 (18)	0.1200 (11)	0.016 (3)*
H11A	-0.117 (2)	0.1334 (19)	0.0189 (12)	0.022 (4)*
H12A	-0.013 (2)	0.2955 (19)	-0.1119 (13)	0.023 (4)*
H13A	0.239 (2)	0.5034 (19)	-0.0772 (12)	0.021 (4)*
H14A	0.394 (2)	0.5305 (19)	0.0737 (12)	0.021 (4)*
H15A	0.306 (2)	0.3656 (18)	0.2039 (12)	0.020 (4)*
H17A	-0.033 (3)	0.460 (2)	0.2780 (14)	0.031 (4)*
H17B	-0.242 (3)	0.488 (2)	0.2843 (15)	0.037 (5)*
H17C	-0.153 (3)	0.418 (3)	0.3570 (18)	0.045 (6)*
H18A	-0.281 (3)	0.154 (3)	0.4486 (16)	0.042 (5)*
H18B	-0.424 (3)	0.078 (2)	0.3754 (14)	0.031 (4)*
H18C	-0.334 (3)	-0.026 (2)	0.4431 (15)	0.037 (5)*
H1N1	-0.089 (3)	-0.121 (2)	0.4034 (14)	0.030 (4)*
Cl2	0.28102 (3)	0.33444 (2)	0.461521 (15)	0.01541 (5)
O2	0.27428 (10)	0.49972 (8)	0.45103 (6)	0.02070 (14)
O3	0.10191 (10)	0.25407 (9)	0.48844 (6)	0.01977 (14)
O4	0.40805 (10)	0.32400 (9)	0.55505 (5)	0.01960 (13)
O5	0.35420 (12)	0.26779 (11)	0.37509 (6)	0.02648 (16)

*Atomic displacement parameters (Å<sup>2</sup>)*

	$U^{11}$	$U^{22}$	$U^{33}$	$U^{12}$	$U^{13}$	$U^{23}$
Cl1	0.01521 (10)	0.01761 (10)	0.02749 (11)	0.00551 (7)	0.00402 (7)	-0.00306 (8)
O1	0.0153 (3)	0.0210 (3)	0.0279 (4)	0.0044 (2)	-0.0042 (2)	0.0044 (3)
N1	0.0142 (3)	0.0112 (3)	0.0124 (3)	0.0017 (2)	0.0016 (2)	0.0031 (2)
C1	0.0126 (3)	0.0116 (3)	0.0126 (3)	0.0015 (2)	0.0012 (2)	0.0020 (2)
C2	0.0132 (3)	0.0103 (3)	0.0118 (3)	0.0020 (2)	-0.0002 (2)	0.0013 (2)
C3	0.0180 (3)	0.0117 (3)	0.0140 (3)	0.0042 (3)	-0.0018 (3)	0.0020 (2)
C4	0.0176 (4)	0.0132 (3)	0.0166 (3)	0.0058 (3)	-0.0025 (3)	0.0003 (3)
C5	0.0129 (3)	0.0133 (3)	0.0170 (3)	0.0039 (2)	-0.0002 (3)	-0.0016 (3)
C6	0.0128 (3)	0.0118 (3)	0.0146 (3)	0.0025 (2)	0.0011 (2)	0.0005 (2)
C7	0.0116 (3)	0.0100 (3)	0.0119 (3)	0.0021 (2)	0.0001 (2)	0.0011 (2)
C8	0.0113 (3)	0.0095 (3)	0.0116 (3)	0.0012 (2)	0.0002 (2)	0.0018 (2)
C9	0.0116 (3)	0.0108 (3)	0.0122 (3)	0.0020 (2)	0.0011 (2)	0.0024 (2)
C10	0.0122 (3)	0.0104 (3)	0.0116 (3)	0.0023 (2)	0.0016 (2)	0.0025 (2)
C11	0.0155 (3)	0.0150 (3)	0.0133 (3)	0.0014 (3)	-0.0009 (2)	0.0024 (3)
C12	0.0191 (4)	0.0187 (4)	0.0126 (3)	0.0050 (3)	0.0013 (3)	0.0038 (3)
C13	0.0195 (4)	0.0149 (3)	0.0159 (3)	0.0057 (3)	0.0063 (3)	0.0054 (3)
C14	0.0170 (4)	0.0140 (3)	0.0180 (3)	-0.0002 (3)	0.0045 (3)	0.0033 (3)
C15	0.0143 (3)	0.0141 (3)	0.0144 (3)	-0.0002 (3)	0.0010 (2)	0.0022 (2)
C16	0.0132 (3)	0.0136 (3)	0.0146 (3)	0.0042 (2)	0.0033 (2)	0.0042 (2)
C17	0.0308 (5)	0.0161 (4)	0.0229 (4)	0.0101 (3)	-0.0037 (4)	-0.0030 (3)
C18	0.0164 (4)	0.0185 (4)	0.0171 (3)	0.0039 (3)	0.0060 (3)	0.0045 (3)
Cl2	0.01584 (9)	0.01583 (9)	0.01397 (9)	0.00038 (6)	-0.00013 (6)	0.00351 (6)
O2	0.0187 (3)	0.0142 (3)	0.0297 (4)	0.0028 (2)	-0.0018 (3)	0.0094 (2)
O3	0.0148 (3)	0.0220 (3)	0.0209 (3)	-0.0037 (2)	-0.0018 (2)	0.0106 (2)
O4	0.0200 (3)	0.0196 (3)	0.0181 (3)	0.0001 (2)	-0.0077 (2)	0.0070 (2)
O5	0.0264 (4)	0.0343 (4)	0.0192 (3)	0.0083 (3)	0.0016 (3)	-0.0065 (3)



*Geometric parameters (Å, °)*

C11—C5	1.7332 (9)	C10—C15	1.3976 (12)
O1—C16	1.2090 (11)	C11—C12	1.3946 (12)
N1—C1	1.3296 (11)	C11—H11A	1.025 (17)
N1—C2	1.3740 (11)	C12—C13	1.3903 (14)
N1—H1N1	0.829 (19)	C12—H12A	0.981 (17)
C1—C9	1.4123 (11)	C13—C14	1.3903 (13)
C1—C18	1.4919 (12)	C13—H13A	0.929 (16)
C2—C7	1.4097 (11)	C14—C15	1.3936 (12)
C2—C3	1.4115 (12)	C14—H14A	0.917 (17)
C3—C4	1.3754 (13)	C15—H15A	0.952 (16)
C3—H3A	0.954 (16)	C16—C17	1.4937 (14)
C4—C5	1.4117 (13)	C17—H17A	0.956 (19)
C4—H4A	0.926 (19)	C17—H17B	0.95 (2)
C5—C6	1.3738 (12)	C17—H17C	0.76 (2)
C6—C7	1.4159 (11)	C18—H18A	0.93 (2)
C6—H6A	0.942 (15)	C18—H18B	0.963 (19)
C7—C8	1.4295 (11)	C18—H18C	0.93 (2)
C8—C9	1.3788 (11)	C12—O5	1.4344 (8)
C8—C10	1.4864 (11)	C12—O3	1.4583 (7)
C9—C16	1.5200 (12)	C12—O2	1.4846 (7)
C10—C11	1.3965 (11)	C12—O4	1.5512 (7)
C1—N1—C2	123.82 (7)	C10—C11—H11A	121.2 (9)
C1—N1—H1N1	118.1 (13)	C13—C12—C11	120.12 (8)
C2—N1—H1N1	117.9 (13)	C13—C12—H12A	120.6 (10)
N1—C1—C9	118.77 (7)	C11—C12—H12A	119.3 (10)
N1—C1—C18	118.45 (7)	C12—C13—C14	119.96 (8)
C9—C1—C18	122.77 (8)	C12—C13—H13A	123.8 (10)
N1—C2—C7	118.94 (7)	C14—C13—H13A	116.1 (10)
N1—C2—C3	119.61 (7)	C13—C14—C15	120.52 (8)
C7—C2—C3	121.45 (8)	C13—C14—H14A	120.5 (10)
C4—C3—C2	118.80 (8)	C15—C14—H14A	119.0 (10)
C4—C3—H3A	120.4 (10)	C14—C15—C10	119.40 (8)
C2—C3—H3A	120.8 (10)	C14—C15—H15A	123.0 (10)
C3—C4—C5	119.88 (8)	C10—C15—H15A	117.5 (10)
C3—C4—H4A	121.9 (11)	O1—C16—C17	123.74 (8)
C5—C4—H4A	118.2 (11)	O1—C16—C9	119.76 (8)
C6—C5—C4	122.16 (8)	C17—C16—C9	116.48 (8)
C6—C5—C11	119.75 (7)	C16—C17—H17A	106.1 (11)
C4—C5—C11	118.09 (7)	C16—C17—H17B	105.6 (12)
C5—C6—C7	118.88 (8)	H17A—C17—H17B	114.6 (16)
C5—C6—H6A	119.5 (10)	C16—C17—H17C	112.6 (17)
C7—C6—H6A	121.6 (10)	H17A—C17—H17C	111 (2)
C2—C7—C6	118.79 (7)	H17B—C17—H17C	107 (2)
C2—C7—C8	118.43 (7)	C1—C18—H18A	110.3 (13)
C6—C7—C8	122.77 (7)	C1—C18—H18B	115.2 (11)



C9—C8—C7	119.31 (7)	H18A—C18—H18B	101.8 (17)
C9—C8—C10	121.17 (7)	C1—C18—H18C	106.8 (13)
C7—C8—C10	119.52 (7)	H18A—C18—H18C	115.6 (17)
C8—C9—C1	120.67 (7)	H18B—C18—H18C	107.4 (16)
C8—C9—C16	120.14 (7)	O5—C12—O3	114.23 (5)
C1—C9—C16	119.18 (7)	O5—C12—O2	111.92 (5)
C11—C10—C15	120.21 (7)	O3—C12—O2	110.06 (5)
C11—C10—C8	120.13 (7)	O5—C12—O4	109.31 (5)
C15—C10—C8	119.65 (7)	O3—C12—O4	104.17 (4)
C12—C11—C10	119.78 (8)	O2—C12—O4	106.60 (4)
C12—C11—H11A	119.0 (9)		
C2—N1—C1—C9	1.85 (12)	C7—C8—C9—C16	179.58 (7)
C2—N1—C1—C18	-177.33 (8)	C10—C8—C9—C16	-0.34 (12)
C1—N1—C2—C7	0.14 (12)	N1—C1—C9—C8	-2.26 (12)
C1—N1—C2—C3	-179.90 (8)	C18—C1—C9—C8	176.88 (8)
N1—C2—C3—C4	-178.83 (8)	N1—C1—C9—C16	178.84 (7)
C7—C2—C3—C4	1.12 (13)	C18—C1—C9—C16	-2.01 (12)
C2—C3—C4—C5	0.44 (13)	C9—C8—C10—C11	-78.54 (10)
C3—C4—C5—C6	-1.37 (13)	C7—C8—C10—C11	101.54 (10)
C3—C4—C5—C11	178.54 (7)	C9—C8—C10—C15	102.80 (10)
C4—C5—C6—C7	0.70 (13)	C7—C8—C10—C15	-77.12 (10)
C11—C5—C6—C7	-179.20 (6)	C15—C10—C11—C12	0.67 (13)
N1—C2—C7—C6	178.19 (7)	C8—C10—C11—C12	-177.97 (8)
C3—C2—C7—C6	-1.77 (12)	C10—C11—C12—C13	-1.27 (14)
N1—C2—C7—C8	-1.72 (11)	C11—C12—C13—C14	0.51 (14)
C3—C2—C7—C8	178.32 (7)	C12—C13—C14—C15	0.86 (14)
C5—C6—C7—C2	0.84 (12)	C13—C14—C15—C10	-1.44 (14)
C5—C6—C7—C8	-179.25 (8)	C11—C10—C15—C14	0.67 (13)
C2—C7—C8—C9	1.28 (11)	C8—C10—C15—C14	179.32 (8)
C6—C7—C8—C9	-178.63 (7)	C8—C9—C16—O1	89.51 (11)
C2—C7—C8—C10	-178.80 (7)	C1—C9—C16—O1	-91.59 (10)
C6—C7—C8—C10	1.30 (12)	C8—C9—C16—C17	-88.92 (10)
C7—C8—C9—C1	0.70 (12)	C1—C9—C16—C17	89.98 (10)
C10—C8—C9—C1	-179.22 (7)		

## Hydrogen-bond geometry (Å, °)

<i>D</i> —H... <i>A</i>	<i>D</i> —H	H... <i>A</i>	<i>D</i> ... <i>A</i>	<i>D</i> —H... <i>A</i>
N1—H1M1...O3 <sup>i</sup>	0.832 (18)	1.896 (18)	2.7177 (10)	169 (2)
C3—H3A...O2 <sup>ii</sup>	0.955 (16)	2.583 (16)	3.3010 (11)	132.2 (12)
C15—H15A...O5	0.951 (16)	2.512 (16)	3.3716 (12)	150.4 (13)
C18—H18B...O5 <sup>iii</sup>	0.97 (2)	2.53 (2)	3.3266 (13)	139.5 (14)
C12—H12A...Cg1 <sup>iv</sup>	0.981 (17)	2.694 (17)	3.5810 (10)	150.6 (13)

Symmetry codes: (i)  $-x, -y, -z+1$ ; (ii)  $x, y-1, z$ ; (iii)  $x-1, y, z$ ; (iv)  $-x, -y, -z$ .