

Acta Crystallographica Section E

## Structure Reports

Online

ISSN 1600-5368

# 1,1'-(Ethane-1,2-diyl)bis(indoline-2,3-dione)

Yao Wang, Sheng-Li Cao,\* Chong-Qing Wan and Jing-Li Yuan

Department of Chemistry, Capital Normal University, Beijing 100048, People's Republic of China

Correspondence e-mail: sl\_cao@sohu.com

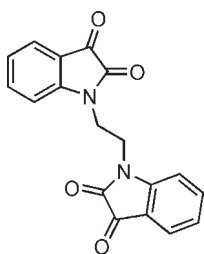
Received 6 February 2010; accepted 20 May 2010

 Key indicators: single-crystal X-ray study;  $T = 296$  K; mean  $\sigma(\text{C}-\text{C}) = 0.002$  Å;  $R$  factor = 0.040;  $wR$  factor = 0.102; data-to-parameter ratio = 15.6.

The molecule of the title compound,  $\text{C}_{18}\text{H}_{12}\text{N}_2\text{O}_4$ , is situated on a crystallographic centre of symmetry. The molecule has a zigzag structure, with two parallel symmetry-related indoline-2,3-dione fragments linked by an ethylene group at each N atom. In the crystal, the molecules stack in columns along the  $b$  axis. There are two such columns in the structure. The molecules within each column are parallel; however, the molecules in the two columns differ in the respective orientation of the indoline-2,3-dione fragments. In one column, they are approximately parallel to (112), while in the other they are approximately parallel to ( $\bar{1}$ 12). The interplanar angle between the indoline-2,3-dione fragments in the two columns is  $80.83(3)^\circ$ . The molecules within each column are related by mutual displacement of their centres of symmetry, that is  $(0, \pm 1/2, \pm 1/2)$ . The packing between the molecules is provided by weak interactions only, *viz.* C—H $\cdots$ O hydrogen bonds and  $\pi$ — $\pi$  [centroid—centroid distance =  $3.8745(8)$  Å] and C=O $\cdots\pi$  interactions.

## Related literature

For the biological and pharmacological activity of 1,2-bis-[(indolin-2,3-dion-1-yl)ethane and its analogues, see: Breinholt *et al.* (1996); Norman (1996); Rajopadhye & Popp (1988). For details of the synthesis, see: Hyatt *et al.* (2007). For the melting point, see: Schmidt *et al.* (2008). For a description of the Cambridge Structural Database, see: Allen (2002).



## Experimental

### Crystal data

$\text{C}_{18}\text{H}_{12}\text{N}_2\text{O}_4$	$V = 722.66(3)$ Å <sup>3</sup>
$M_r = 320.30$	$Z = 2$
Monoclinic, $P2_1/c$	Mo $K\alpha$ radiation
$a = 12.2572(3)$ Å	$\mu = 0.11$ mm <sup>-1</sup>
$b = 5.2314(1)$ Å	$T = 296$ K
$c = 12.5122(3)$ Å	$0.45 \times 0.32 \times 0.25$ mm
$\beta = 115.747(1)^\circ$	

### Data collection

Bruker APEXII CCD area-detector diffractometer	13976 measured reflections
Absorption correction: multi-scan (SADABS; Bruker, 2007)	1714 independent reflections
$T_{\min} = 0.723$ , $T_{\max} = 0.893$	1496 reflections with $I > 2\sigma(I)$
	$R_{\text{int}} = 0.028$

### Refinement

$R[F^2 > 2\sigma(F^2)] = 0.040$	110 parameters
$wR(F^2) = 0.102$	H-atom parameters constrained
$S = 1.05$	$\Delta\rho_{\text{max}} = 0.19$ e Å <sup>-3</sup>
1714 reflections	$\Delta\rho_{\text{min}} = -0.16$ e Å <sup>-3</sup>

**Table 1**

Hydrogen-bond geometry (Å, °).

$D-H\cdots A$	$D-H$	$H\cdots A$	$D\cdots A$	$D-H\cdots A$
C9—H9A $\cdots$ O1 <sup>1</sup>	0.97	2.47	3.262 (2)	139

 Symmetry code: (i)  $x, -y + \frac{1}{2}, z - \frac{1}{2}$ .

**Table 2**

 C=O $\cdots\pi$  interactions (Å, °).

$Cg1$  and  $Cg2$  are the centroids of the N1,C1,C6—C8 pyrrole and C1—C6 benzene rings, respectively.

C=O $\cdots Cg$	O $\cdots Cg$	C $\cdots Cg$	C=O $\cdots Cg$
C8—O2 $\cdots Cg1$	3.8207 (12)	4.4046 (12)	111.34 (10)
C8—O2 $\cdots Cg1$	3.6269 (15)	4.6449 (17)	142.86 (10)
C8—O2 $\cdots Cg2$	3.5874 (14)	3.5278 (14)	77.47 (9)

 Symmetry codes: (i)  $x, 1 + y, z$ ; (ii)  $-x, \frac{1}{2} + y, \frac{3}{2} - z$ ; (iii)  $x, 1 + y, z$ .

Data collection: APEX2 (Bruker, 2007); cell refinement: APEX2 and SAINT (Bruker, 2007); data reduction: SAINT; program(s) used to solve structure: SHELXS97 (Sheldrick, 2008); program(s) used to refine structure: SHELXL97 (Sheldrick, 2008); molecular graphics: SHELXTL (Sheldrick, 2008); software used to prepare material for publication: SHELXTL and PLATON (Spek, 2009).

This work was supported by the National Natural Science Foundation of China (project No. 20972099) and the Beijing Municipal Commission of Education (project No. KM200710028008).

Supplementary data and figures for this paper are available from the IUCr electronic archives (Reference: FB2183).

## References

- Allen, F. H. (2002). *Acta Cryst.* **B58**, 380–388.
- Breinholt, J., Demuth, H., Heide, M., Jensen, G. W., Moller, I. L., Nielson, R. I., Olsen, C. E. & Rosendahl, C. N. (1996). *Acta Chem. Scand.* **50**, 443–445.
- Bruker (2007). *APEX2*, *SADABS* and *SAINT*. Bruker AXS Inc., Madison, Wisconsin, USA.
- Hyatt, J. L., Moak, T., Hatfield, M. J., Tsurkan, L., Edwards, C. C., Wierdl, M., Danks, M. K., Wadkins, R. M. & Potter, P. M. (2007). *J. Med. Chem.* **50**, 1876–1885.
- Norman, T. R. (1996). *Med. Sci. Res.* **24**, 153–154.
- Rajopadhye, M. & Popp, F. D. (1988). *J. Med. Chem.* **31**, 1001–1005.
- Sheldrick, G. M. (2008). *Acta Cryst.* **A64**, 112–122.
- Schmidt, M. S., Reverdito, A. M., Kremenchuzky, L., Perillo, I. A. & Blanco, M. M. (2008). *Molecules*, **13**, 831–840.
- Spek, A. L. (2009). *Acta Cryst.* **D65**, 148–155.

## supporting information

*Acta Cryst.* (2010). E66, o1569–o1570 [doi:10.1107/S1600536810018957]

**1,1'-(Ethane-1,2-diyl)bis(indoline-2,3-dione)**

Yao Wang, Sheng-Li Cao, Chong-Qing Wan and Jing-Li Yuan

**S1. Comment**

Isatins present a wide range of important biological and pharmacological activities. Fungicide (Breinholt *et al.*, 1996), antianxiety (Norman, 1996; Breinholt *et al.*, 1996) and anticonvulsant ones (Rajopadhye & Popp, 1988) are among them. In particular, the title compound, 1,2-bis[(indolin-2,3-dion)-1-yl]ethane, and related 1,1-bis{4-[(2,3-dioxindolin-1-yl)methyl]phenyl}methane and 1-(3,4-dichlorobenzyl)indoline-2,3-dione (Hyatt *et al.*, 2007) have been considered as potent and selective carboxylesterase inhibitors (Hyatt *et al.*, 2007). Herein, we report the structure of the title compound.

The centrosymmetric molecule takes a zigzag fashion, with two symmetric parallel indoline-2,3-dione fragments being linked by the ethylene group to the N atoms (Fig. 1). There are only weak intermolecular interactions in the structure: a  $\pi$ -electron— $\pi$ -electron ring interaction between N1\C1\C6\C7\C8 (pyrrole) and C1\C2\C3\C4\C5\C6 (benzene) rings (symmetry code:  $x, y+1, z$ ) with the distance between the respective centroids equal to 3.8745 (8) Å. A C—H $\cdots$ O bond is given in Tab. 1 while C=O $\cdots$  $\pi$ -electron ring interactions are listed in Tab. 2.

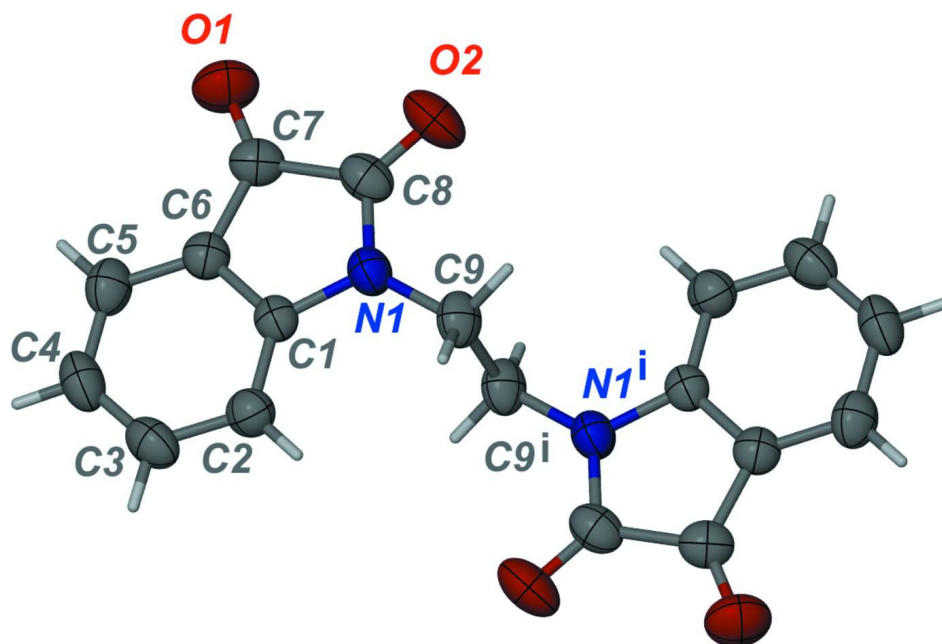
The distance C7—C8 (1.5554 (19) Å) corresponds well to the pertinent distances previously observed in well determined structures with the indoline-2,3-dione fragment. The search in the Cambridge Structural Database (Allen, 2002; Cambridge Structural Database, version 5.31 and addenda up to 26 February 2010) yielded 12 hits with structures determined with  $R_{\text{val}} < 0.05$ . The corresponding extremal distances from this search equalled to 1.531 and 1.578 Å for JOBDEG and NAQRAY, respectively.

**S2. Experimental**

A mixture of indoline-2,3-dione (1.47 g, 10 mmol), 1,2-dibromoethane (5.64 g, 30 mmol) and  $\text{K}_2\text{CO}_3$  (2 g, 14.5 mmol) in *N,N*-dimethylformamide (20 ml) was heated at 100–120 °C for 3 h. After cooling to room temperature, the reaction mixture was poured into 0 °C water (100 ml). The resulting precipitate was separated by filtration, dried in air and then it was purified by column chromatography on a silica gel with dichloromethane/methanol = 95:5, v/v, as an eluent. The precipitate included the prevailing product 1-(2-bromoethyl)indoline-2,3-dione ( $R_f = 0.77$ , m.p. 131–132 °C; yield 60.9%) as well as the title product 1,2-bis[(indolin-2,3-dion)-1-yl]ethane ( $R_f = 0.64$ , m.p. 296–297 °C; yield 13.1%). The prevailing product, 1-(2-bromoethyl)indoline-2,3-dione, has been determined by a mass spectrometric analysis while its melting point (131–132 °C) corresponded to 131 °C reported by Schmidt *et al.* (2008). The orange crystals of the title compound that measured 0.40 × 0.30 × 0.20 mm on average were obtained by slow evaporation from the solution of dichloromethane *N,N*-dimethylformamide 50:50 (v/v).

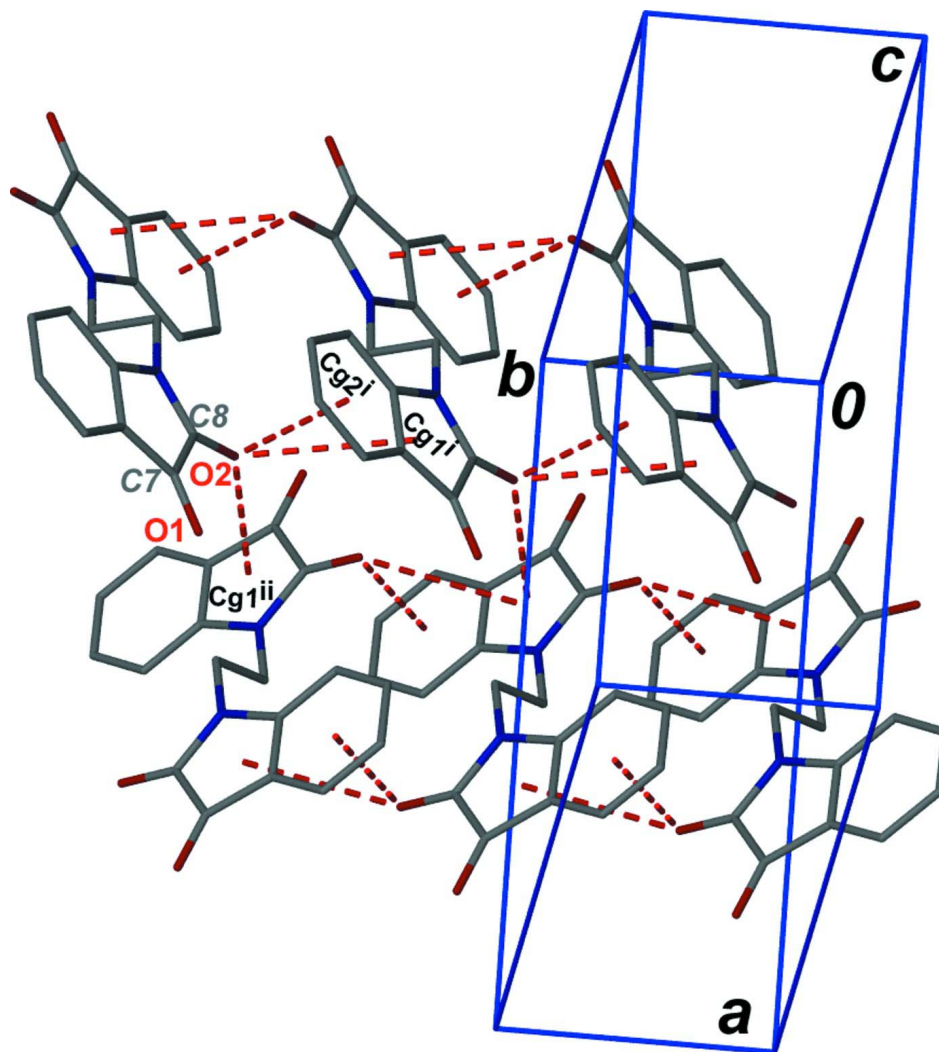
**S3. Refinement**

All the H atoms were discernible in the difference electron density maps. Nevertheless, the hydrogen atoms were placed into the idealized positions and allowed to ride on the carrier atoms, with C—H = 0.93 and 0.97 Å for aryl and methylene hydrogens, respectively.  $U_{\text{iso}}(\text{H}) = 1.2U_{\text{eq}}(\text{C})_{\text{aryl/methylene}}$ .



**Figure 1**

The title molecule with the atomic numbering scheme. The displacement ellipsoids are shown at the 50% probability level. Symmetry code: (i):  $-x, -y, -z+1$ .



**Figure 2**

The column motifs of the molecules of the title compound. The  $\pi$ -electron ring $\cdots$  $\pi$ -electron ring interactions are shown as a red dashed lines. Cg1, Cg2 are the centroids of the N1-C1-C6-C7-C8 (pyrrole) and C1-C2-C3-C4-C5-C6 (benzene) rings, respectively. Symmetry codes: (i):  $x, 1+y, z$ ; (ii):  $-x, 1/2+y, 3/2-z$ .

### 1,1'-(Ethane-1,2-diyl)bis(indoline-2,3-dione)

#### Crystal data

$C_{18}H_{12}N_2O_4$

$M_r = 320.30$

Monoclinic,  $P2_1/c$

Hall symbol:  $-P\ 2_1/c$

$a = 12.2572$  (3) Å

$b = 5.2314$  (1) Å

$c = 12.5122$  (3) Å

$\beta = 115.747$  (1)°

$V = 722.66$  (3) Å<sup>3</sup>

$Z = 2$

$F(000) = 332$

$D_x = 1.472$  Mg m<sup>-3</sup>

Melting point = 569–570 K

Mo  $K\alpha$  radiation,  $\lambda = 0.71073$  Å

Cell parameters from 243 reflections

$\theta = 1.8$ – $27.2$ °

$\mu = 0.11$  mm<sup>-1</sup>

$T = 296$  K

Block, orange

$0.45 \times 0.32 \times 0.25$  mm

*Data collection*

Bruker APEXII CCD area-detector  
diffractometer  
Radiation source: fine-focus sealed tube  
Graphite monochromator  
 $\omega$  scans  
Absorption correction: multi-scan  
(*SADABS*; Bruker, 2007)  
 $T_{\min} = 0.723$ ,  $T_{\max} = 0.893$

13976 measured reflections  
1714 independent reflections  
1496 reflections with  $I > 2\sigma(I)$   
 $R_{\text{int}} = 0.028$   
 $\theta_{\max} = 27.9^\circ$ ,  $\theta_{\min} = 1.8^\circ$   
 $h = -16 \rightarrow 16$   
 $k = -6 \rightarrow 6$   
 $l = -16 \rightarrow 16$

*Refinement*

Refinement on  $F^2$   
Least-squares matrix: full  
 $R[F^2 > 2\sigma(F^2)] = 0.040$   
 $wR(F^2) = 0.102$   
 $S = 1.05$   
1714 reflections  
110 parameters  
0 restraints  
24 constraints  
Primary atom site location: structure-invariant  
direct methods

Secondary atom site location: difference Fourier  
map  
Hydrogen site location: difference Fourier map  
H-atom parameters constrained  
 $w = 1/[\sigma^2(F_o^2) + (0.0422P)^2 + 0.1818P]$   
where  $P = (F_o^2 + 2F_c^2)/3$   
 $(\Delta/\sigma)_{\max} < 0.001$   
 $\Delta\rho_{\max} = 0.19 \text{ e } \text{\AA}^{-3}$   
 $\Delta\rho_{\min} = -0.16 \text{ e } \text{\AA}^{-3}$   
Extinction correction: *SHELXL97* (Sheldrick,  
2008),  $F_c^* = kFc[1 + 0.001x \text{Fc}^2 \lambda^3 / \sin(2\theta)]^{-1/4}$   
Extinction coefficient: 0.060 (5)

*Special details*

**Geometry.** All esds (except the esd in the dihedral angle between two l.s. planes) are estimated using the full covariance matrix. The cell esds are taken into account individually in the estimation of esds in distances, angles and torsion angles; correlations between esds in cell parameters are only used when they are defined by crystal symmetry. An approximate (isotropic) treatment of cell esds is used for estimating esds involving l.s. planes.

**Refinement.** Refinement of  $F^2$  against ALL reflections. The weighted  $R$ -factor  $wR$  and goodness of fit  $S$  are based on  $F^2$ , conventional  $R$ -factors  $R$  are based on  $F$ , with  $F$  set to zero for negative  $F^2$ . The threshold expression of  $F^2 > \sigma(F^2)$  is used only for calculating  $R$ -factors(gt) etc. and is not relevant to the choice of reflections for refinement.  $R$ -factors based on  $F^2$  are statistically about twice as large as those based on  $F$ , and  $R$ -factors based on ALL data will be even larger.

*Fractional atomic coordinates and isotropic or equivalent isotropic displacement parameters ( $\text{\AA}^2$ )*

	<i>x</i>	<i>y</i>	<i>z</i>	$U_{\text{iso}}^*/U_{\text{eq}}$
C1	0.22945 (10)	-0.0885 (2)	0.68434 (10)	0.0390 (3)
C2	0.26127 (11)	-0.2721 (3)	0.62433 (12)	0.0474 (3)
H5	0.2193	-0.2905	0.5425	0.057*
C3	0.35869 (12)	-0.4288 (3)	0.69112 (14)	0.0539 (4)
H4	0.3818	-0.5550	0.6527	0.065*
C4	0.42235 (12)	-0.4035 (3)	0.81260 (14)	0.0566 (4)
H3	0.4875	-0.5110	0.8545	0.068*
C5	0.38964 (12)	-0.2189 (3)	0.87211 (12)	0.0526 (3)
H2	0.4318	-0.2010	0.9540	0.063*
C6	0.29262 (11)	-0.0609 (2)	0.80716 (11)	0.0429 (3)
C7	0.23681 (12)	0.1498 (3)	0.84203 (12)	0.0478 (3)
C8	0.13013 (12)	0.2405 (2)	0.72484 (12)	0.0488 (3)
C9	0.04837 (11)	0.1014 (3)	0.51355 (11)	0.0484 (3)
H9A	0.0900	0.0746	0.4639	0.058*
H9B	0.0108	0.2689	0.4955	0.058*

N1	0.13504 (9)	0.0917 (2)	0.63726 (9)	0.0448 (3)
O2	0.05930 (10)	0.4097 (2)	0.71384 (11)	0.0696 (4)
O1	0.26316 (11)	0.2447 (2)	0.93787 (9)	0.0691 (4)

*Atomic displacement parameters (Å<sup>2</sup>)*

	$U^{11}$	$U^{22}$	$U^{33}$	$U^{12}$	$U^{13}$	$U^{23}$
C1	0.0363 (5)	0.0370 (6)	0.0449 (6)	−0.0013 (5)	0.0187 (5)	0.0035 (5)
C2	0.0446 (6)	0.0499 (8)	0.0498 (7)	−0.0001 (5)	0.0223 (5)	−0.0031 (6)
C3	0.0506 (7)	0.0464 (8)	0.0736 (9)	0.0055 (6)	0.0352 (7)	0.0004 (7)
C4	0.0436 (7)	0.0509 (8)	0.0731 (9)	0.0099 (6)	0.0232 (7)	0.0159 (7)
C5	0.0471 (7)	0.0550 (8)	0.0488 (7)	−0.0009 (6)	0.0145 (6)	0.0106 (6)
C6	0.0442 (6)	0.0403 (6)	0.0449 (6)	−0.0024 (5)	0.0200 (5)	0.0030 (5)
C7	0.0573 (7)	0.0441 (7)	0.0500 (7)	−0.0051 (6)	0.0306 (6)	−0.0006 (6)
C8	0.0546 (7)	0.0393 (7)	0.0623 (8)	0.0022 (6)	0.0344 (6)	0.0042 (6)
C9	0.0438 (6)	0.0483 (7)	0.0494 (7)	0.0030 (6)	0.0169 (6)	0.0149 (6)
N1	0.0425 (5)	0.0424 (6)	0.0477 (6)	0.0057 (4)	0.0179 (5)	0.0044 (5)
O2	0.0796 (7)	0.0511 (6)	0.0934 (9)	0.0219 (5)	0.0518 (7)	0.0109 (6)
O1	0.0868 (8)	0.0726 (8)	0.0564 (6)	−0.0037 (6)	0.0390 (6)	−0.0127 (5)

*Geometric parameters (Å, °)*

C1—C2	1.3757 (17)	C5—H2	0.9300
C1—C6	1.3958 (17)	C6—C7	1.4605 (18)
C1—N1	1.4081 (15)	C7—O1	1.2051 (16)
C2—C3	1.3892 (19)	C7—C8	1.5554 (19)
C2—H5	0.9300	C8—O2	1.2053 (16)
C3—C4	1.381 (2)	C8—N1	1.3665 (17)
C3—H4	0.9300	C9—N1	1.4486 (16)
C4—C5	1.381 (2)	C9—C9 <sup>i</sup>	1.515 (3)
C4—H3	0.9300	C9—H9A	0.9700
C5—C6	1.3847 (18)	C9—H9B	0.9700
C2—C1—C6	121.32 (11)	C1—C6—C7	107.40 (11)
C2—C1—N1	127.98 (11)	O1—C7—C6	130.57 (14)
C6—C1—N1	110.70 (11)	O1—C7—C8	124.38 (13)
C1—C2—C3	117.20 (12)	C6—C7—C8	105.05 (10)
C1—C2—H5	121.4	O2—C8—N1	127.39 (14)
C3—C2—H5	121.4	O2—C8—C7	126.91 (13)
C4—C3—C2	122.18 (13)	N1—C8—C7	105.69 (11)
C4—C3—H4	118.9	N1—C9—C9 <sup>i</sup>	110.73 (13)
C2—C3—H4	118.9	N1—C9—H9A	109.5
C3—C4—C5	120.21 (13)	C9 <sup>i</sup> —C9—H9A	109.5
C3—C4—H3	119.9	N1—C9—H9B	109.5
C5—C4—H3	119.9	C9 <sup>i</sup> —C9—H9B	109.5
C4—C5—C6	118.51 (13)	H9A—C9—H9B	108.1
C4—C5—H2	120.7	C8—N1—C1	111.12 (10)
C6—C5—H2	120.7	C8—N1—C9	124.73 (11)

C5—C6—C1	120.58 (12)	C1—N1—C9	123.94 (11)
C5—C6—C7	132.02 (12)		
C6—C1—C2—C3	0.09 (18)	O1—C7—C8—O2	-1.6 (2)
N1—C1—C2—C3	-179.95 (12)	C6—C7—C8—O2	179.12 (13)
C1—C2—C3—C4	-0.3 (2)	O1—C7—C8—N1	177.33 (13)
C2—C3—C4—C5	0.4 (2)	C6—C7—C8—N1	-1.95 (13)
C3—C4—C5—C6	-0.3 (2)	O2—C8—N1—C1	-179.26 (13)
C4—C5—C6—C1	0.07 (19)	C7—C8—N1—C1	1.81 (13)
C4—C5—C6—C7	-179.40 (13)	O2—C8—N1—C9	-4.4 (2)
C2—C1—C6—C5	0.03 (18)	C7—C8—N1—C9	176.68 (11)
N1—C1—C6—C5	-179.94 (11)	C2—C1—N1—C8	179.03 (12)
C2—C1—C6—C7	179.61 (11)	C6—C1—N1—C8	-1.01 (14)
N1—C1—C6—C7	-0.36 (13)	C2—C1—N1—C9	4.11 (19)
C5—C6—C7—O1	1.7 (2)	C6—C1—N1—C9	-175.93 (11)
C1—C6—C7—O1	-177.84 (14)	C9 <sup>i</sup> —C9—N1—C8	-95.50 (17)
C5—C6—C7—C8	-179.10 (13)	C9 <sup>i</sup> —C9—N1—C1	78.73 (17)
C1—C6—C7—C8	1.38 (13)		

Symmetry code: (i)  $-x, -y, -z+1$ .

*Hydrogen-bond geometry* ( $\text{\AA}$ ,  $^\circ$ )

<i>D</i> —H $\cdots$ <i>A</i>	<i>D</i> —H	H $\cdots$ <i>A</i>	<i>D</i> $\cdots$ <i>A</i>	<i>D</i> —H $\cdots$ <i>A</i>
C9—H9 <i>A</i> $\cdots$ O1 <sup>ii</sup>	0.97	2.47	3.262 (2)	139

Symmetry code: (ii)  $x, -y+1/2, z-1/2$ .