

Acta Crystallographica Section E

Structure Reports

Online

ISSN 1600-5368

4-Methylanilinium *p*-toluenesulfonate

Rui-jun Xu

Ordered Matter Science Research Center, College of Chemistry and Chemical Engineering, Southeast University, Nanjing 210096, People's Republic of China
Correspondence e-mail: youyoubanzhen@126.com

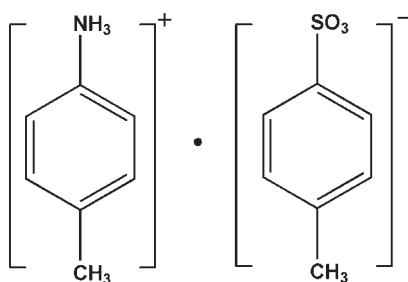
Received 18 May 2010; accepted 6 June 2010

Key indicators: single-crystal X-ray study; $T = 293$ K; mean $\sigma(\text{C}-\text{C}) = 0.004$ Å; R factor = 0.041; wR factor = 0.093; data-to-parameter ratio = 18.0.

The crystal structure of the title compound, $\text{C}_7\text{H}_{10}\text{N}^+\cdot\text{C}_7\text{H}_7\text{O}_3\text{S}^-$, displays strong $\text{N}-\text{H}\cdots\text{O}$ and $\text{N}-\text{H}\cdots\text{S}$ hydrogen bonding between the ammonium group and the *p*-toluenesulfonate anion, linking the cations and anions into chains along the *b* axis.

Related literature

For background to dielectric-ferroelectric materials, see: Hang *et al.* (2009); Li *et al.* (2008).



Experimental

Crystal data

 $\text{C}_7\text{H}_{10}\text{N}^+\cdot\text{C}_7\text{H}_7\text{O}_3\text{S}^-$ $M_r = 279.35$ Monoclinic, $P2_1$ $a = 5.775$ (4) Å $b = 9.026$ (5) Å $c = 13.350$ (8) Å $\beta = 96.344$ (9)° $V = 691.6$ (7) Å³ $Z = 2$ Mo $K\alpha$ radiation
 $\mu = 0.24$ mm⁻¹
 $T = 293$ K
 $0.2 \times 0.2 \times 0.2$ mm

Data collection

Rigaku Mercury2 diffractometer
Absorption correction: multi-scan
(*CrystalClear*; Rigaku, 2005)
 $T_{\text{min}} = 0.929$, $T_{\text{max}} = 1.000$

6641 measured reflections
3136 independent reflections
2876 reflections with $I > 2\sigma(I)$
 $R_{\text{int}} = 0.029$

Refinement

 $R[F^2 > 2\sigma(F^2)] = 0.041$ $wR(F^2) = 0.093$ $S = 0.99$

1336 reflections

174 parameters

1 restraint

H-atom parameters constrained

 $\Delta\rho_{\text{max}} = 0.18$ e Å⁻³ $\Delta\rho_{\text{min}} = -0.23$ e Å⁻³

Absolute structure: Flack (1983),

1448 Friedel pairs

Flack parameter: 0.05 (8)

Table 1

Hydrogen-bond geometry (Å, °).

| $D-\text{H}\cdots A$ | $D-\text{H}$ | $\text{H}\cdots A$ | $D\cdots A$ | $D-\text{H}\cdots A$ |
|--|--------------|--------------------|-------------|----------------------|
| $\text{N1}-\text{H1D}\cdots\text{O1}^{\text{i}}$ | 0.89 | 2.31 | 3.170 (3) | 164 |
| $\text{N1}-\text{H1D}\cdots\text{O2}^{\text{j}}$ | 0.89 | 2.33 | 2.824 (3) | 115 |
| $\text{N1}-\text{H1D}\cdots\text{S1}^{\text{i}}$ | 0.89 | 2.81 | 3.570 (3) | 144 |
| $\text{N1}-\text{H1E}\cdots\text{O1}^{\text{ii}}$ | 0.89 | 1.96 | 2.829 (3) | 165 |
| $\text{N1}-\text{H1F}\cdots\text{O3}^{\text{iii}}$ | 0.89 | 2.02 | 2.785 (3) | 143 |

Symmetry codes: (i) $-x - 1, y - \frac{1}{2}, -z + 1$; (ii) $x - 1, y - 1, z$; (iii) $-x, y - \frac{1}{2}, -z + 1$.

Data collection: *CrystalClear* (Rigaku, 2005); cell refinement: *CrystalClear*; data reduction: *CrystalClear*; program(s) used to solve structure: *SHELXS97* (Sheldrick, 2008); program(s) used to refine structure: *SHELXL97* (Sheldrick, 2008); molecular graphics: *SHELXTL* (Sheldrick, 2008); software used to prepare material for publication: *PRPKAPPA* (Ferguson, 1999).

The author thanks Southeast University for financial support of this research and is grateful for the guidance of Professor Wen Zhang.

Supplementary data and figures for this paper are available from the IUCr electronic archives (Reference: FJ2307).

References

- Ferguson, G. (1999). *PRPKAPPA*. University of Guelph, Canada.
Flack, H. D. (1983). *Acta Cryst.* **A39**, 876–881.
Hang, T., Fu, D. W., Ye, Q. & Xiong, R. G. (2009). *Cryst. Growth Des.* **5**, 2026–2029.
Li, X. Z., Qu, Z. R. & Xiong, R. G. (2008). *Chin. J. Chem.* **11**, 1959–1962.
Rigaku (2005). *CrystalClear*. Rigaku Corporation, Tokyo, Japan.
Sheldrick, G. M. (2008). *Acta Cryst.* **A64**, 112–122.

supporting information

Acta Cryst. (2010). E66, o1794 [doi:10.1107/S1600536810021537]

4-Methylanilinium *p*-toluenesulfonate

Rui-jun Xu

S1. Comment

Dielectric-ferroelectric as an interesting class of materials, there are organic ligands (Li *et al.*, 2008), metal-organic coordination compounds (Hang *et al.*, 2009) and organic-inorganic hybrid. In this article, the preparation and crystal structure of the title compound have been presented. It should be not a real ferroelectrics or there may be no distinct phase transition occurred within the measured temperature range. Similarly, below the melting point (477 K) of the compound, the dielectric constant as a function of temperature also goes smoothly, and there is no dielectric anomaly observed.

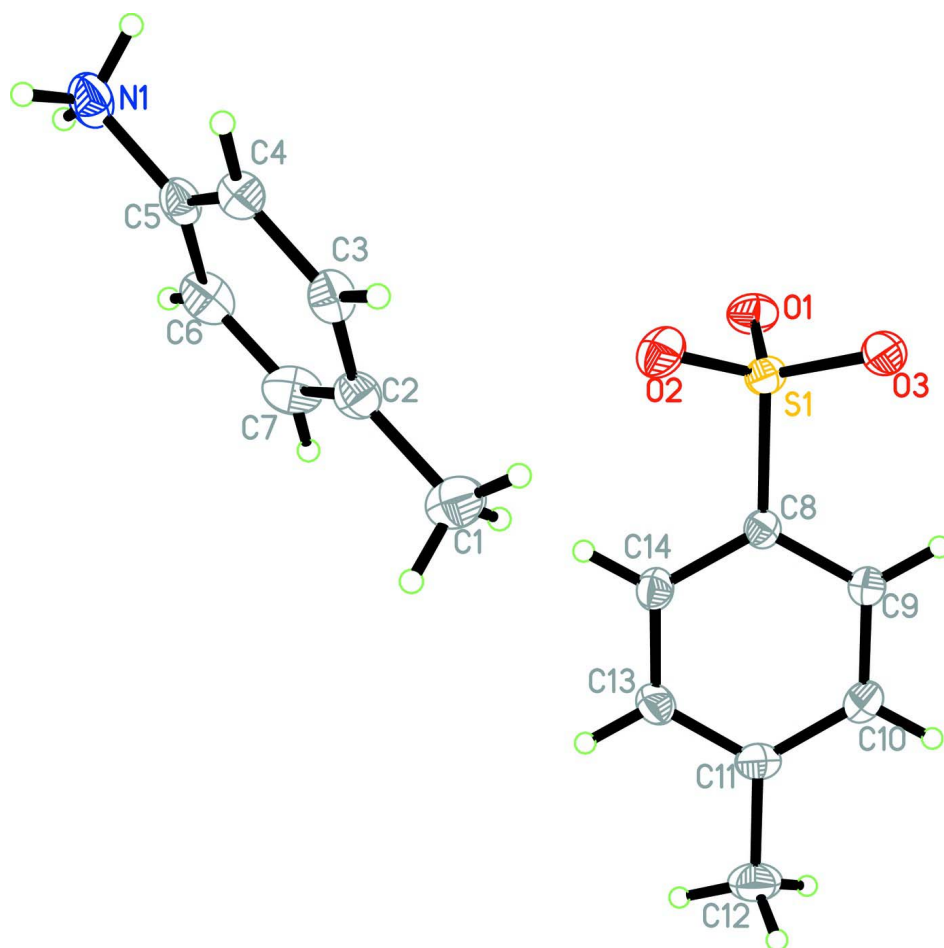
The asymmetric unit of the title compound contains a (CH₃—C₆H₄—NH₃⁺) cation and an (CH₃—C₆H₄—SO₃⁻) anion (Fig.1). The strong N—H···S, N—H···O hydrogen bonds involving H1D and H1E (N1···S1 3.570 (3) Å and N1···O1 2.829 (3) Å) are beneficial to the stability of the crystal structure and link the cations and anions to chains along the *b* axis (Fig. 2 and Tab. 1).

S2. Experimental

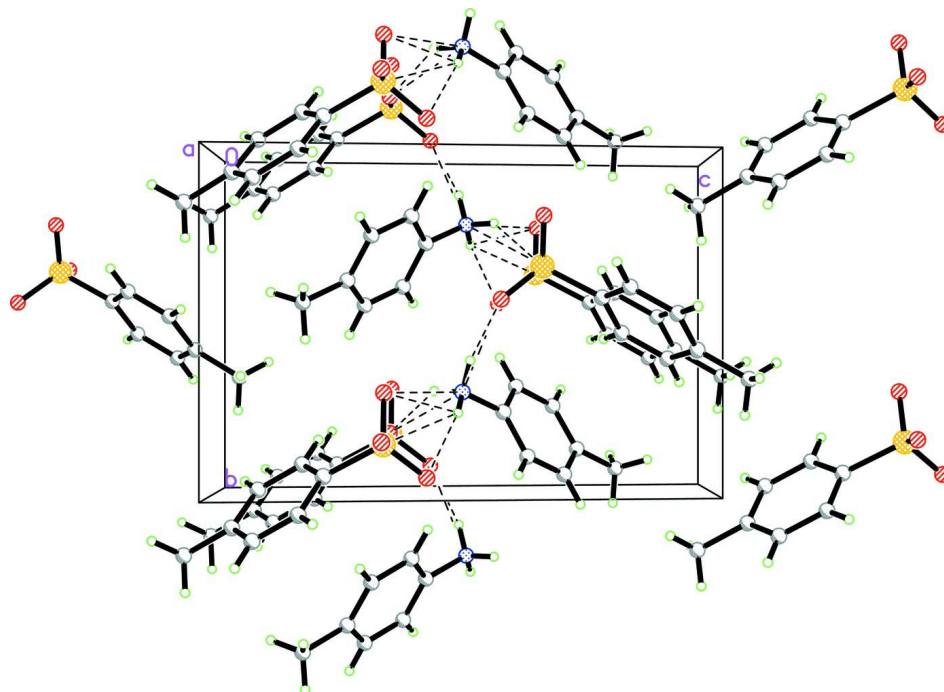
The title compound was obtained by the addition of *p*-toluenesulfonic acid (3.78 g, 0.022 mol) to a solution of 4-methylaniline (2.14 g, 0.02 mol) in ethanol, in the stoichiometric ratio 1.1:1. After two weeks, good quality single crystals were obtained by slow evaporation.

S3. Refinement

Positional parameters of all the H atoms were calculated geometrically and the H atoms were set to ride on the C and N atoms to which they are bonded, with $U_{\text{iso}}(\text{H}) = 1.2U_{\text{eq}}(\text{C or N})$.

**Figure 1**

The molecular structure of the title compound, showing the atomic numbering scheme. Displacement ellipsoids are drawn at the 30% probability level.

**Figure 2**

A view of the packing of the title compound, stacking along the *b* axis. Dashed lines indicate hydrogen bonds.

4-Methylanilinium *p*-toluenesulfonate

Crystal data

$C_7H_{10}N^+ \cdot C_7H_7O_3S^-$
 $M_r = 279.35$
 Monoclinic, $P2_1$
 Hall symbol: P 2y b
 $a = 5.775$ (4) Å
 $b = 9.026$ (5) Å
 $c = 13.350$ (8) Å
 $\beta = 96.344$ (9)°
 $V = 691.6$ (7) Å³
 $Z = 2$

$F(000) = 296$
 $D_x = 1.341$ Mg m⁻³
 Mo $K\alpha$ radiation, $\lambda = 0.71073$ Å
 Cell parameters from 3136 reflections
 $\theta = 3.6$ – 27.5°
 $\mu = 0.24$ mm⁻¹
 $T = 293$ K
 Prism, colorless
 $0.2 \times 0.2 \times 0.2$ mm

Data collection

Rigaku Mercury2
 diffractometer
 Radiation source: fine-focus sealed tube
 Graphite monochromator
 Detector resolution: 13.6612 pixels mm⁻¹
 CCD_Profile_fitting scans
 Absorption correction: multi-scan
 (*CrystalClear*; Rigaku, 2005)
 $T_{\min} = 0.929$, $T_{\max} = 1.000$

6641 measured reflections
 3136 independent reflections
 2876 reflections with $I > 2\sigma(I)$
 $R_{\text{int}} = 0.029$
 $\theta_{\max} = 27.5^\circ$, $\theta_{\min} = 3.6^\circ$
 $h = -7 \rightarrow 7$
 $k = -11 \rightarrow 11$
 $l = -17 \rightarrow 17$

*Refinement*Refinement on F^2

Least-squares matrix: full

 $R[F^2 > 2\sigma(F^2)] = 0.041$ $wR(F^2) = 0.093$ $S = 0.99$

3136 reflections

174 parameters

1 restraint

Primary atom site location: structure-invariant
direct methodsSecondary atom site location: difference Fourier
mapHydrogen site location: inferred from
neighbouring sites

H-atom parameters constrained

 $w = 1/[\sigma^2(F_o^2) + (0.0447P)^2 + 0.128P]$ where $P = (F_o^2 + 2F_c^2)/3$ $(\Delta/\sigma)_{\max} < 0.001$ $\Delta\rho_{\max} = 0.18 \text{ e } \text{\AA}^{-3}$ $\Delta\rho_{\min} = -0.23 \text{ e } \text{\AA}^{-3}$ Absolute structure: Flack (1983), 1448 Friedel
pairs

Absolute structure parameter: 0.05 (8)

Special details

Geometry. All e.s.d.'s (except the e.s.d. in the dihedral angle between two l.s. planes) are estimated using the full covariance matrix. The cell e.s.d.'s are taken into account individually in the estimation of e.s.d.'s in distances, angles and torsion angles; correlations between e.s.d.'s in cell parameters are only used when they are defined by crystal symmetry. An approximate (isotropic) treatment of cell e.s.d.'s is used for estimating e.s.d.'s involving l.s. planes.

Refinement. Refinement of F^2 against ALL reflections. The weighted R -factor wR and goodness of fit S are based on F^2 , conventional R -factors R are based on F , with F set to zero for negative F^2 . The threshold expression of $F^2 > \sigma(F^2)$ is used only for calculating R -factors(gt) *etc.* and is not relevant to the choice of reflections for refinement. R -factors based on F^2 are statistically about twice as large as those based on F , and R -factors based on ALL data will be even larger.

Fractional atomic coordinates and isotropic or equivalent isotropic displacement parameters (\AA^2)

| | x | y | z | $U_{\text{iso}}^*/U_{\text{eq}}$ |
|------|-------------|---------------|--------------|----------------------------------|
| S1 | 0.14320 (9) | -0.16236 (6) | 0.34803 (4) | 0.03362 (14) |
| O1 | 0.0753 (3) | -0.0673 (2) | 0.42886 (12) | 0.0456 (4) |
| O2 | 0.0234 (3) | -0.30349 (19) | 0.34704 (14) | 0.0481 (4) |
| O3 | 0.3936 (2) | -0.1756 (2) | 0.34883 (12) | 0.0485 (4) |
| C8 | 0.0436 (3) | -0.0720 (2) | 0.23353 (15) | 0.0302 (4) |
| C9 | 0.1872 (4) | 0.0278 (3) | 0.19156 (17) | 0.0363 (5) |
| H9A | 0.3372 | 0.0450 | 0.2223 | 0.044* |
| C10 | 0.1071 (4) | 0.1023 (3) | 0.10348 (19) | 0.0420 (6) |
| H10A | 0.2038 | 0.1701 | 0.0761 | 0.050* |
| C11 | -0.1161 (4) | 0.0769 (3) | 0.05557 (17) | 0.0394 (5) |
| C12 | -0.2047 (5) | 0.1588 (4) | -0.0397 (2) | 0.0589 (8) |
| H12A | -0.3718 | 0.1546 | -0.0491 | 0.071* |
| H12B | -0.1434 | 0.1134 | -0.0962 | 0.071* |
| H12C | -0.1553 | 0.2603 | -0.0343 | 0.071* |
| C13 | -0.2562 (4) | -0.0238 (3) | 0.09898 (18) | 0.0405 (6) |
| H13A | -0.4056 | -0.0420 | 0.0679 | 0.049* |
| C14 | -0.1806 (4) | -0.0981 (3) | 0.18702 (18) | 0.0368 (5) |
| H14A | -0.2783 | -0.1647 | 0.2149 | 0.044* |
| N1 | -0.7130 (4) | -0.8010 (3) | 0.50369 (16) | 0.0513 (5) |
| H1D | -0.8346 | -0.7437 | 0.5125 | 0.062* |
| H1E | -0.7621 | -0.8925 | 0.4885 | 0.062* |
| H1F | -0.6154 | -0.8026 | 0.5602 | 0.062* |
| C1 | -0.2340 (5) | -0.5599 (4) | 0.1861 (2) | 0.0590 (7) |

| | | | | |
|-----|-------------|-------------|--------------|------------|
| H1A | -0.2324 | -0.4538 | 0.1911 | 0.071* |
| H1B | -0.3120 | -0.5889 | 0.1218 | 0.071* |
| H1C | -0.0768 | -0.5963 | 0.1926 | 0.071* |
| C2 | -0.3611 (4) | -0.6242 (2) | 0.26934 (18) | 0.0408 (6) |
| C3 | -0.2853 (4) | -0.7531 (3) | 0.31786 (18) | 0.0400 (5) |
| H3A | -0.1548 | -0.8010 | 0.2985 | 0.048* |
| C4 | -0.3986 (4) | -0.8132 (3) | 0.39495 (18) | 0.0392 (5) |
| H4A | -0.3448 | -0.8996 | 0.4275 | 0.047* |
| C5 | -0.5937 (4) | -0.7409 (3) | 0.42196 (17) | 0.0385 (5) |
| C6 | -0.6736 (4) | -0.6122 (3) | 0.3749 (2) | 0.0485 (7) |
| H6A | -0.8047 | -0.5645 | 0.3939 | 0.058* |
| C7 | -0.5565 (5) | -0.5552 (3) | 0.2994 (2) | 0.0508 (6) |
| H7A | -0.6097 | -0.4680 | 0.2677 | 0.061* |

Atomic displacement parameters (Å²)

| | U^{11} | U^{22} | U^{33} | U^{12} | U^{13} | U^{23} |
|-----|-------------|-------------|-------------|--------------|--------------|--------------|
| S1 | 0.0322 (2) | 0.0360 (3) | 0.0334 (3) | 0.0060 (3) | 0.00711 (18) | 0.0046 (2) |
| O1 | 0.0537 (10) | 0.0513 (11) | 0.0326 (9) | 0.0096 (9) | 0.0085 (7) | -0.0025 (8) |
| O2 | 0.0532 (11) | 0.0334 (9) | 0.0589 (11) | 0.0011 (8) | 0.0121 (8) | 0.0090 (8) |
| O3 | 0.0311 (7) | 0.0656 (11) | 0.0489 (9) | 0.0115 (9) | 0.0046 (6) | 0.0178 (9) |
| C8 | 0.0276 (10) | 0.0320 (11) | 0.0315 (10) | 0.0028 (9) | 0.0058 (8) | -0.0017 (9) |
| C9 | 0.0309 (11) | 0.0432 (13) | 0.0349 (12) | -0.0018 (10) | 0.0044 (9) | 0.0023 (10) |
| C10 | 0.0416 (13) | 0.0448 (14) | 0.0409 (13) | -0.0050 (11) | 0.0101 (10) | 0.0068 (11) |
| C11 | 0.0438 (12) | 0.0443 (13) | 0.0303 (11) | 0.0072 (11) | 0.0042 (10) | 0.0023 (10) |
| C12 | 0.0641 (18) | 0.074 (2) | 0.0371 (14) | 0.0073 (16) | 0.0010 (12) | 0.0134 (14) |
| C13 | 0.0295 (11) | 0.0532 (15) | 0.0380 (12) | 0.0016 (11) | -0.0004 (9) | -0.0003 (11) |
| C14 | 0.0305 (11) | 0.0392 (12) | 0.0415 (13) | -0.0011 (10) | 0.0071 (9) | 0.0019 (10) |
| N1 | 0.0401 (11) | 0.0737 (14) | 0.0412 (11) | -0.0133 (11) | 0.0088 (9) | -0.0154 (11) |
| C1 | 0.0736 (19) | 0.0558 (17) | 0.0486 (16) | -0.0024 (16) | 0.0105 (14) | 0.0017 (14) |
| C2 | 0.0469 (13) | 0.0390 (14) | 0.0362 (12) | -0.0028 (10) | 0.0027 (10) | -0.0083 (9) |
| C3 | 0.0349 (12) | 0.0416 (14) | 0.0444 (13) | 0.0025 (10) | 0.0085 (10) | -0.0099 (11) |
| C4 | 0.0392 (12) | 0.0377 (12) | 0.0402 (12) | 0.0013 (10) | 0.0026 (9) | -0.0019 (10) |
| C5 | 0.0310 (11) | 0.0513 (14) | 0.0333 (11) | -0.0057 (10) | 0.0047 (9) | -0.0119 (11) |
| C6 | 0.0385 (13) | 0.0572 (16) | 0.0494 (15) | 0.0153 (11) | 0.0032 (11) | -0.0145 (12) |
| C7 | 0.0583 (16) | 0.0456 (15) | 0.0474 (14) | 0.0186 (13) | 0.0012 (12) | -0.0013 (12) |

Geometric parameters (Å, °)

| | | | |
|---------|-------------|--------|-----------|
| S1—O2 | 1.449 (2) | N1—C5 | 1.458 (3) |
| S1—O3 | 1.4500 (18) | N1—H1D | 0.8903 |
| S1—O1 | 1.4655 (18) | N1—H1E | 0.8893 |
| S1—C8 | 1.772 (2) | N1—H1F | 0.8904 |
| C8—C9 | 1.384 (3) | C1—C2 | 1.514 (4) |
| C8—C14 | 1.393 (3) | C1—H1A | 0.9600 |
| C9—C10 | 1.389 (3) | C1—H1B | 0.9600 |
| C9—H9A | 0.9300 | C1—H1C | 0.9600 |
| C10—C11 | 1.393 (4) | C2—C3 | 1.379 (3) |

| | | | |
|---------------|--------------|----------------|-------------|
| C10—H10A | 0.9300 | C2—C7 | 1.387 (4) |
| C11—C13 | 1.386 (3) | C3—C4 | 1.389 (3) |
| C11—C12 | 1.510 (3) | C3—H3A | 0.9300 |
| C12—H12A | 0.9600 | C4—C5 | 1.384 (3) |
| C12—H12B | 0.9600 | C4—H4A | 0.9300 |
| C12—H12C | 0.9600 | C5—C6 | 1.376 (4) |
| C13—C14 | 1.381 (3) | C6—C7 | 1.374 (4) |
| C13—H13A | 0.9300 | C6—H6A | 0.9300 |
| C14—H14A | 0.9300 | C7—H7A | 0.9300 |
| O2—S1—O3 | 113.73 (12) | C5—N1—H1D | 109.1 |
| O2—S1—O1 | 110.78 (11) | C5—N1—H1E | 109.9 |
| O3—S1—O1 | 113.02 (11) | H1D—N1—H1E | 109.5 |
| O2—S1—C8 | 106.72 (11) | C5—N1—H1F | 109.4 |
| O3—S1—C8 | 105.82 (10) | H1D—N1—H1F | 109.4 |
| O1—S1—C8 | 106.15 (11) | H1E—N1—H1F | 109.5 |
| C9—C8—C14 | 119.9 (2) | C2—C1—H1A | 109.5 |
| C9—C8—S1 | 119.82 (16) | C2—C1—H1B | 109.5 |
| C14—C8—S1 | 120.26 (17) | H1A—C1—H1B | 109.5 |
| C8—C9—C10 | 120.0 (2) | C2—C1—H1C | 109.5 |
| C8—C9—H9A | 120.0 | H1A—C1—H1C | 109.5 |
| C10—C9—H9A | 120.0 | H1B—C1—H1C | 109.5 |
| C9—C10—C11 | 120.9 (2) | C3—C2—C7 | 118.0 (2) |
| C9—C10—H10A | 119.5 | C3—C2—C1 | 120.9 (2) |
| C11—C10—H10A | 119.5 | C7—C2—C1 | 121.1 (2) |
| C13—C11—C10 | 118.0 (2) | C2—C3—C4 | 121.8 (2) |
| C13—C11—C12 | 120.9 (2) | C2—C3—H3A | 119.1 |
| C10—C11—C12 | 121.1 (2) | C4—C3—H3A | 119.1 |
| C11—C12—H12A | 109.5 | C5—C4—C3 | 118.2 (2) |
| C11—C12—H12B | 109.5 | C5—C4—H4A | 120.9 |
| H12A—C12—H12B | 109.5 | C3—C4—H4A | 120.9 |
| C11—C12—H12C | 109.5 | C6—C5—C4 | 121.4 (2) |
| H12A—C12—H12C | 109.5 | C6—C5—N1 | 119.6 (2) |
| H12B—C12—H12C | 109.5 | C4—C5—N1 | 119.0 (2) |
| C14—C13—C11 | 122.0 (2) | C7—C6—C5 | 118.9 (2) |
| C14—C13—H13A | 119.0 | C7—C6—H6A | 120.5 |
| C11—C13—H13A | 119.0 | C5—C6—H6A | 120.5 |
| C13—C14—C8 | 119.2 (2) | C6—C7—C2 | 121.8 (2) |
| C13—C14—H14A | 120.4 | C6—C7—H7A | 119.1 |
| C8—C14—H14A | 120.4 | C2—C7—H7A | 119.1 |
| O2—S1—C8—C9 | -151.80 (18) | C11—C13—C14—C8 | -0.4 (4) |
| O3—S1—C8—C9 | -30.3 (2) | C9—C8—C14—C13 | 0.3 (3) |
| O1—S1—C8—C9 | 90.00 (19) | S1—C8—C14—C13 | 178.57 (18) |
| O2—S1—C8—C14 | 29.9 (2) | C7—C2—C3—C4 | -0.2 (3) |
| O3—S1—C8—C14 | 151.35 (19) | C1—C2—C3—C4 | 179.5 (2) |
| O1—S1—C8—C14 | -88.3 (2) | C2—C3—C4—C5 | 0.6 (3) |
| C14—C8—C9—C10 | 0.3 (3) | C3—C4—C5—C6 | -0.6 (3) |

| | | | |
|-----------------|--------------|-------------|------------|
| S1—C8—C9—C10 | -178.00 (19) | C3—C4—C5—N1 | -179.1 (2) |
| C8—C9—C10—C11 | -0.7 (4) | C4—C5—C6—C7 | 0.2 (4) |
| C9—C10—C11—C13 | 0.6 (4) | N1—C5—C6—C7 | 178.6 (2) |
| C9—C10—C11—C12 | 179.4 (2) | C5—C6—C7—C2 | 0.3 (4) |
| C10—C11—C13—C14 | 0.0 (4) | C3—C2—C7—C6 | -0.2 (4) |
| C12—C11—C13—C14 | -178.8 (2) | C1—C2—C7—C6 | -179.9 (2) |

Hydrogen-bond geometry (Å, °)

| <i>D</i> —H \cdots <i>A</i> | <i>D</i> —H | H \cdots <i>A</i> | <i>D</i> \cdots <i>A</i> | <i>D</i> —H \cdots <i>A</i> |
|-----------------------------------|-------------|---------------------|----------------------------|-------------------------------|
| N1—H1D \cdots O1 ⁱ | 0.89 | 2.31 | 3.170 (3) | 164 |
| N1—H1D \cdots O2 ⁱ | 0.89 | 2.33 | 2.824 (3) | 115 |
| N1—H1D \cdots S1 ⁱ | 0.89 | 2.81 | 3.570 (3) | 144 |
| N1—H1E \cdots O1 ⁱⁱ | 0.89 | 1.96 | 2.829 (3) | 165 |
| N1—H1F \cdots O3 ⁱⁱⁱ | 0.89 | 2.02 | 2.785 (3) | 143 |

Symmetry codes: (i) $-x-1, y-1/2, -z+1$; (ii) $x-1, y-1, z$; (iii) $-x, y-1/2, -z+1$.