

Acta Crystallographica Section E

Structure Reports

Online

ISSN 1600-5368

Bis{2-[1-(benzylimino)ethyl]phenolato}-palladium(II)

Amalina Mohd Tajuddin,^a Hadariah Bahron,^a
Wan Nazihah Wan Ibrahim^{a*} and Bohari M. Yamin^b

^aDepartment of Chemistry, Faculty of Applied Sciences, Universiti Teknologi MARA, 40450 Shah Alam, Selangor, Malaysia, and ^bSchool of Chemical Sciences and Food Technology, Universiti Kebangsaan Malaysia, UKM 43600 Bangi Selangor, Malaysia
Correspondence e-mail: wannazihah@salam.uitm.edu.my

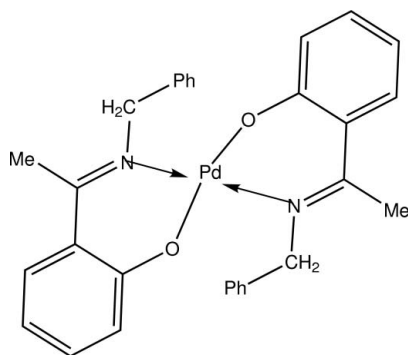
Received 26 July 2010; accepted 5 August 2010

Key indicators: single-crystal X-ray study; $T = 298$ K; mean $\sigma(\text{C}-\text{C}) = 0.006$ Å;
R factor = 0.036; wR factor = 0.109; data-to-parameter ratio = 13.5.

In the title compound, $[\text{Pd}(\text{C}_{15}\text{H}_{14}\text{NO})_2]$, the Pd atom lies on an inversion center and is coordinated by two ligand molecules through the O and N atoms in a bidentate manner, forming a slightly distorted square-planar geometry. The dihedral angle between the two benzene rings in the ligand is 76.53 (19)°. The molecular packing is stabilized by $\text{C}-\text{H}\cdots\text{O}$ and $\text{C}-\text{H}\cdots\pi$ interactions.

Related literature

For the catalytic activity of palladium(II)-Schiff base complexes, see: Gupta & Sutar (2008); Lai *et al.* (2005) and for their antitumor activity, see: Garoufis *et al.* (2008). For related structures, see: Adrian *et al.* (2008); Wan Nazihah Wan Ibrahim *et al.* (2008); Chen & Xia (2009). For bond-length data, see: Allen *et al.* (2002).



Experimental

Crystal data

 $[\text{Pd}(\text{C}_{15}\text{H}_{14}\text{NO})_2]$
 $M_r = 554.94$ Monoclinic, $P2_1/n$ $a = 11.188$ (2) Å $b = 9.4460$ (17) Å $c = 11.984$ (2) Å
 $\beta = 110.558$ (4)°
 $V = 1185.8$ (4) Å³
 $Z = 2$
 Mo $K\alpha$ radiation

 $\mu = 0.81$ mm⁻¹
 $T = 298$ K
 $0.28 \times 0.20 \times 0.12$ mm

Data collection

Bruker SMART APEX CCD area-detector diffractometer
 Absorption correction: multi-scan (SADABS; Bruker, 2000)
 $T_{\min} = 0.804$, $T_{\max} = 0.908$

6420 measured reflections
 2177 independent reflections
 1939 reflections with $I > 2\sigma(I)$
 $R_{\text{int}} = 0.038$

Refinement

$R[F^2 > 2\sigma(F^2)] = 0.036$
 $wR(F^2) = 0.109$
 $S = 1.18$
 2177 reflections

161 parameters
 H-atom parameters constrained
 $\Delta\rho_{\text{max}} = 0.88$ e Å⁻³
 $\Delta\rho_{\text{min}} = -0.98$ e Å⁻³

Table 1

Hydrogen-bond geometry (Å, °).

$Cg3$ and $Cg4$ are the centroids of the $C1-C6$ and $C10-C16$ rings, respectively.

$D-H\cdots A$	$D-H$	$H\cdots A$	$D\cdots A$	$D-H\cdots A$
$C9-H9A\cdots O1^i$	0.97	2.18	2.862 (4)	127
$C8-H8B\cdots Cg4^{ii}$	0.96	2.57	3.523 (5)	172
$C13-H13A\cdots Cg3^{iii}$	0.93	2.87	3.626 (5)	139

Symmetry codes: (i) $-x + 1, -y + 1, -z$; (ii) $x - \frac{1}{2}, -y + \frac{1}{2}, z - \frac{1}{2}$; (iii) $-x + 1, -y + 2, -z$.

Data collection: SMART (Bruker, 2000); cell refinement: SAINT (Bruker, 2000); data reduction: SAINT (Bruker, 2000); program(s) used to solve structure: SHELXS97 (Sheldrick, 2008); program(s) used to refine structure: SHELXL97 (Sheldrick, 2008); molecular graphics: SHELXTL (Sheldrick, 2008); software used to prepare material for publication: SHELXTL (Sheldrick, 2008), PARST (Nardelli, 1995) and PLATON (Spek, 2009).

Thanks are gratefully extended to The Ministry of Higher Education of Malaysia, Universiti Teknologi MARA and Universiti Kebangsaan Malaysia for the research grants Nos. 600-RMI/ST/FRGS 5/3/Fst(7/2009) and UKM-OUP-BTT-28/2007.

Supplementary data and figures for this paper are available from the IUCr electronic archives (Reference: PV2311).

References

- Adrian, R. A., Broker, G. A., Tiekink, E. R. T. & Walmsley, J. A. (2008). *Inorg. Chim. Acta*, **361**, 1261–1266.
 Allen, F. H. (2002). *Acta Cryst.* **B58**, 380–388.
 Bruker (2000). SADABS, SMART and SAINT. Bruker AXS Inc., Madison, Wisconsin, USA.
 Chen, S.-Z. & Xia, D.-G. (2009). *Acta Cryst.* **E65**, m923.
 Garoufis, A., Hadjidakou, S. K. & Hadjiladis, N. (2008). *Coord. Chem. Rev.* **253**, 1384–1397.
 Gupta, K. C. & Sutar, A. K. (2008). *Coord. Chem. Rev.* **252**, 1420–1450.
 Lai, Y. C., Chen, H. Y., Hung, W. C., Lin, C. C. & Hong, F. E. (2005). *Tetrahedron*, **61**, 9484–9489.
 Nardelli, M. (1995). *J. Appl. Cryst.* **28**, 659.
 Sheldrick, G. M. (2008). *Acta Cryst.* **A64**, 112–122.
 Spek, A. L. (2009). *Acta Cryst.* **D65**, 148–155.
 Wan Nazihah Wan Ibrahim, Shamsuddin, M., Chantrapromma, S. & Fun, H.-K. (2008). *Acta Cryst.* **E64**, m909–m910.

supporting information

Acta Cryst. (2010). E66, m1100 [https://doi.org/10.1107/S1600536810031375]

Bis{2-[1-(benzylimino)ethyl]phenolato}palladium(II)

Amalina Mohd Tajuddin, Hadariah Bahron, Wan Nazihah Wan Ibrahim and Bohari M. Yamin

S1. Comment

The palladium- Schiff bases complexes have found various applications especially as catalyst (Gupta & Sutar, 2008; Lai *et al.*, 2005) and antitumors activity (Garoufis *et al.*, 2008). The title compound is analogous to the previously reported complex, {2,2'-[(2,2-dimethylpropane-1,3-diyl)-bis (nitrilomethylidene)]diphenolato}-palladium(II) ethanol hemisolvate (Wan Nazihah Wan Ibrahim *et al.*, 2008) in terms of the geometry around the central palladium atom.

In the title molecule (Fig. 1), the palladium atom lies on an inversion center and is coordinated to two ligand molecules through the oxygen and nitrogen atoms in a bidentate manner to form a perfect square planar geometry. The bond distances and bond angles in the title complex are normal (Allen *et al.*, 2002). The Pd1—O and Pd1—N bond lengths of 1.981 (2) and 2.039 (2) Å, respectively, in a square planar geometry are typical of square planar Pd(II) of Schiff bases (Adrian *et al.*, 2008). The dihedral angle between the benzene rings is 76.5 (2)°. The molecule is stabilized by C—H... π (C8—H8B...Cg3, C8—H8C...Cg4 and C13H-13 A...Cg3) interactions (Table 1).

S2. Experimental

The ligand, 2-hydroxyacetophenonebenzylimine, (1.1271 g, 5 mmol) was dissolved in hot ethanol (20 ml) in a round-bottomed flask. Palladium(II) acetate (0.5618 g, 2.5 mmol) was dissolved separately in hot ethanol (40 ml) and added into the flask containing the ligand solution. The mixture was stirred and refluxed for 5 h upon which green precipitate was formed. It was isolated by gravity filtration, washed with cold ethanol and air dried at room temperature. The solid product was recrystallized from chloroform yielding yellow crystals. Yield 87.80%; m.p. 529–530 K.

S3. Refinement

The H atoms were positioned geometrically with C—H = 0.97, 96 and 0.93 Å for methyl, methylene and aromatic groups, respectively, and constrained to ride on their parent atoms with $U_{\text{iso}}(\text{H}) = 1.5(\text{methyl})$ or $1.2(\text{methylene and aromatic}) \times U_{\text{eq}}(\text{C})$. The highest peak and deepest hole are located at 0.90 Å from Pd1 atom.

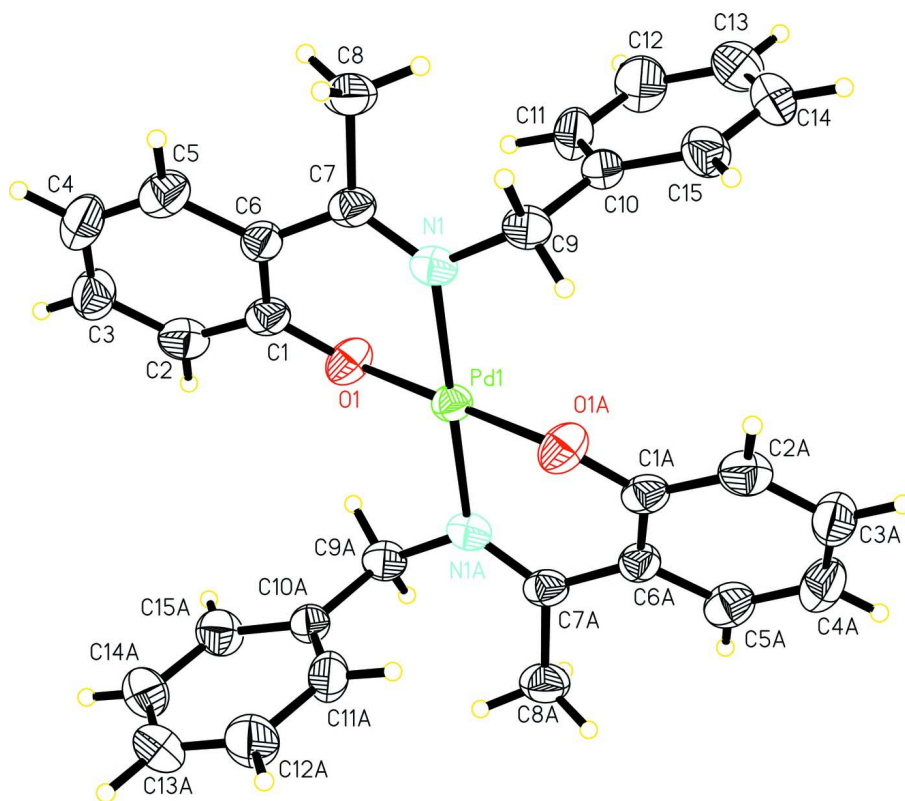


Figure 1

The molecular structure of the title complex with displacement ellipsoids drawn at the 50% probability level.

Bis{2-[1-(benzylimino)ethyl]phenolato}palladium(II)

Crystal data

[Pd(C₁₅H₁₄NO)₂]
M_r = 554.94
 Monoclinic, *P*2₁/*n*
 Hall symbol: -*P* 2₁*n*
a = 11.188 (2) Å
b = 9.4460 (17) Å
c = 11.984 (2) Å
 β = 110.558 (4)°
V = 1185.8 (4) Å³
Z = 2

F(000) = 568
D_x = 1.554 Mg m⁻³
 Mo *K*α radiation, λ = 0.71073 Å
 Cell parameters from 4170 reflections
 θ = 2.1–25.5°
 μ = 0.81 mm⁻¹
T = 298 K
 Block, yellow
 0.28 × 0.20 × 0.12 mm

Data collection

Bruker SMART APEX CCD area-detector
 diffractometer
 Radiation source: fine-focus sealed tube
 Graphite monochromator
 Detector resolution: 83.66 pixels mm⁻¹
 ω scan
 Absorption correction: multi-scan
 (*SADABS*; Bruker, 2000)
T_{min} = 0.804, *T_{max}* = 0.908

6420 measured reflections
 2177 independent reflections
 1939 reflections with *I* > 2/*s*(*I*)
R_{int} = 0.038
 θ_{max} = 25.5°, θ_{min} = 2.1°
h = -13→13
k = -11→11
l = -14→11

*Refinement*Refinement on F^2

Least-squares matrix: full

 $R[F^2 > 2\sigma(F^2)] = 0.036$ $wR(F^2) = 0.109$ $S = 1.18$

2177 reflections

161 parameters

0 restraints

Primary atom site location: structure-invariant
direct methodsSecondary atom site location: difference Fourier
mapHydrogen site location: inferred from
neighbouring sites

H-atom parameters constrained

 $w = 1/[\sigma^2(F_o^2) + (0.0502P)^2 + 0.7043P]$ where $P = (F_o^2 + 2F_c^2)/3$ $(\Delta/\sigma)_{\max} < 0.001$ $\Delta\rho_{\max} = 0.88 \text{ e } \text{\AA}^{-3}$ $\Delta\rho_{\min} = -0.98 \text{ e } \text{\AA}^{-3}$ *Special details***Experimental.** Analytical calculation for $\text{C}_{30}\text{H}_{28}\text{N}_2\text{O}_2\text{Pd}$: C,64.93; H,5.09; N,5.05. Found: C,64.58; H,4.97; N,4.94. IR (cm⁻¹): $\nu(\text{C}=\text{N})$ 1586, $\nu(\text{C}-\text{O})$ 1323, $\nu(\text{C}-\text{H})$ 2977, $\nu(\text{C}-\text{N})$ 1355, $\nu(\text{Pd}-\text{O})$ 695, $\nu(\text{Pd}-\text{N})$ 476.**Geometry.** All e.s.d.'s (except the e.s.d. in the dihedral angle between two l.s. planes) are estimated using the full covariance matrix. The cell e.s.d.'s are taken into account individually in the estimation of e.s.d.'s in distances, angles and torsion angles; correlations between e.s.d.'s in cell parameters are only used when they are defined by crystal symmetry. An approximate (isotropic) treatment of cell e.s.d.'s is used for estimating e.s.d.'s involving l.s. planes.**Refinement.** Refinement of F^2 against ALL reflections. The weighted R -factor wR and goodness of fit S are based on F^2 , conventional R -factors R are based on F , with F set to zero for negative F^2 . The threshold expression of $F^2 > \sigma(F^2)$ is used only for calculating R -factors(gt) *etc.* and is not relevant to the choice of reflections for refinement. R -factors based on F^2 are statistically about twice as large as those based on F , and R -factors based on ALL data will be even larger.*Fractional atomic coordinates and isotropic or equivalent isotropic displacement parameters (\AA^2)*

	x	y	z	$U_{\text{iso}}^*/U_{\text{eq}}$
Pd1	0.5000	0.5000	0.0000	0.02879 (16)
O1	0.4462 (2)	0.5912 (3)	0.1236 (2)	0.0409 (6)
N1	0.6541 (2)	0.6317 (3)	0.0459 (2)	0.0323 (6)
C1	0.5319 (3)	0.6226 (3)	0.2285 (3)	0.0335 (7)
C2	0.4944 (3)	0.6076 (4)	0.3284 (3)	0.0422 (8)
H2A	0.4128	0.5748	0.3178	0.051*
C3	0.5765 (4)	0.6406 (4)	0.4419 (3)	0.0468 (9)
H3A	0.5503	0.6291	0.5069	0.056*
C4	0.6971 (4)	0.6906 (4)	0.4583 (4)	0.0498 (10)
H4A	0.7529	0.7116	0.5346	0.060*
C5	0.7346 (3)	0.7095 (4)	0.3632 (4)	0.0428 (9)
H5A	0.8156	0.7458	0.3760	0.051*
C6	0.6551 (3)	0.6758 (3)	0.2454 (3)	0.0326 (7)
C7	0.7007 (3)	0.6991 (3)	0.1464 (3)	0.0335 (7)
C8	0.8047 (4)	0.8088 (4)	0.1658 (4)	0.0437 (9)
H8A	0.7961	0.8529	0.0912	0.066*
H8B	0.8867	0.7638	0.1977	0.066*
H8C	0.7974	0.8793	0.2208	0.066*
C9	0.7070 (3)	0.6577 (3)	-0.0483 (3)	0.0347 (7)
H9A	0.6993	0.5717	-0.0945	0.042*
H9B	0.7972	0.6790	-0.0114	0.042*
C10	0.6432 (3)	0.7774 (3)	-0.1320 (3)	0.0321 (7)
C11	0.5685 (3)	0.8786 (4)	-0.1050 (3)	0.0423 (8)

H11A	0.5541	0.8737	-0.0333	0.051*
C12	0.5149 (5)	0.9877 (4)	-0.1846 (5)	0.0554 (12)
H12A	0.4646	1.0553	-0.1657	0.066*
C13	0.5354 (6)	0.9965 (4)	-0.2906 (5)	0.0569 (13)
H13A	0.4998	1.0701	-0.3432	0.068*
C14	0.6090 (4)	0.8957 (4)	-0.3186 (4)	0.0531 (10)
H14A	0.6231	0.9007	-0.3905	0.064*
C15	0.6619 (3)	0.7873 (4)	-0.2398 (3)	0.0438 (9)
H15A	0.7112	0.7193	-0.2595	0.053*

Atomic displacement parameters (Å²)

	U^{11}	U^{22}	U^{33}	U^{12}	U^{13}	U^{23}
Pd1	0.0270 (2)	0.0261 (2)	0.0302 (3)	-0.00145 (11)	0.00621 (17)	0.00023 (12)
O1	0.0325 (12)	0.0481 (14)	0.0402 (14)	-0.0030 (10)	0.0104 (11)	-0.0108 (11)
N1	0.0297 (13)	0.0273 (13)	0.0396 (16)	0.0003 (11)	0.0116 (12)	0.0024 (12)
C1	0.0351 (16)	0.0236 (15)	0.039 (2)	0.0035 (13)	0.0098 (15)	-0.0020 (14)
C2	0.0437 (19)	0.0346 (18)	0.053 (2)	-0.0016 (15)	0.0227 (18)	-0.0025 (16)
C3	0.057 (2)	0.049 (2)	0.036 (2)	0.0019 (18)	0.0177 (18)	-0.0037 (17)
C4	0.053 (2)	0.054 (2)	0.034 (2)	0.0033 (18)	0.0051 (18)	-0.0084 (18)
C5	0.0366 (18)	0.041 (2)	0.046 (2)	0.0004 (15)	0.0083 (17)	-0.0055 (17)
C6	0.0357 (16)	0.0268 (16)	0.0317 (18)	0.0023 (13)	0.0074 (14)	-0.0005 (13)
C7	0.0301 (16)	0.0257 (15)	0.038 (2)	0.0009 (13)	0.0041 (14)	0.0009 (14)
C8	0.0424 (19)	0.0353 (19)	0.050 (2)	-0.0090 (15)	0.0115 (18)	-0.0001 (17)
C9	0.0300 (16)	0.0345 (17)	0.040 (2)	-0.0021 (13)	0.0133 (15)	-0.0002 (14)
C10	0.0320 (16)	0.0330 (16)	0.0305 (18)	-0.0065 (13)	0.0099 (14)	-0.0012 (14)
C11	0.053 (2)	0.043 (2)	0.0287 (19)	0.0076 (16)	0.0111 (16)	0.0007 (16)
C12	0.074 (3)	0.040 (2)	0.052 (3)	0.0167 (18)	0.021 (3)	0.0026 (17)
C13	0.076 (4)	0.038 (2)	0.051 (3)	0.0001 (17)	0.016 (3)	0.0121 (16)
C14	0.072 (3)	0.051 (2)	0.043 (2)	-0.010 (2)	0.029 (2)	0.0042 (18)
C15	0.050 (2)	0.043 (2)	0.046 (2)	-0.0010 (16)	0.0268 (18)	-0.0005 (17)

Geometric parameters (Å, °)

Pd1—O1	1.981 (2)	C7—C8	1.514 (4)
Pd1—O1 ⁱ	1.981 (2)	C8—H8A	0.9600
Pd1—N1 ⁱ	2.039 (3)	C8—H8B	0.9600
Pd1—N1	2.039 (3)	C8—H8C	0.9600
O1—C1	1.319 (4)	C9—C10	1.514 (5)
N1—C7	1.299 (4)	C9—H9A	0.9700
N1—C9	1.468 (4)	C9—H9B	0.9700
C1—C2	1.407 (5)	C10—C11	1.380 (5)
C1—C6	1.414 (4)	C10—C15	1.382 (5)
C2—C3	1.384 (5)	C11—C12	1.389 (6)
C2—H2A	0.9300	C11—H11A	0.9300
C3—C4	1.377 (5)	C12—C13	1.371 (8)
C3—H3A	0.9300	C12—H12A	0.9300
C4—C5	1.357 (6)	C13—C14	1.375 (6)

C4—H4A	0.9300	C13—H13A	0.9300
C5—C6	1.415 (5)	C14—C15	1.377 (6)
C5—H5A	0.9300	C14—H14A	0.9300
C6—C7	1.463 (5)	C15—H15A	0.9300
O1—Pd1—O1 ⁱ	180.00 (8)	C7—C8—H8A	109.5
O1—Pd1—N1 ⁱ	90.97 (10)	C7—C8—H8B	109.5
O1 ⁱ —Pd1—N1 ⁱ	89.03 (10)	H8A—C8—H8B	109.5
O1—Pd1—N1	89.03 (10)	C7—C8—H8C	109.5
O1 ⁱ —Pd1—N1	90.97 (10)	H8A—C8—H8C	109.5
N1 ⁱ —Pd1—N1	180.00 (11)	H8B—C8—H8C	109.5
C1—O1—Pd1	120.0 (2)	N1—C9—C10	114.3 (3)
C7—N1—C9	119.5 (3)	N1—C9—H9A	108.7
C7—N1—Pd1	125.1 (2)	C10—C9—H9A	108.7
C9—N1—Pd1	115.2 (2)	N1—C9—H9B	108.7
O1—C1—C2	117.0 (3)	C10—C9—H9B	108.7
O1—C1—C6	124.2 (3)	H9A—C9—H9B	107.6
C2—C1—C6	118.7 (3)	C11—C10—C15	118.3 (3)
C3—C2—C1	121.4 (3)	C11—C10—C9	123.0 (3)
C3—C2—H2A	119.3	C15—C10—C9	118.6 (3)
C1—C2—H2A	119.3	C10—C11—C12	120.3 (4)
C4—C3—C2	119.7 (3)	C10—C11—H11A	119.9
C4—C3—H3A	120.1	C12—C11—H11A	119.9
C2—C3—H3A	120.1	C13—C12—C11	120.5 (4)
C5—C4—C3	120.1 (4)	C13—C12—H12A	119.7
C5—C4—H4A	119.9	C11—C12—H12A	119.7
C3—C4—H4A	119.9	C12—C13—C14	119.6 (4)
C4—C5—C6	122.4 (4)	C12—C13—H13A	120.2
C4—C5—H5A	118.8	C14—C13—H13A	120.2
C6—C5—H5A	118.8	C13—C14—C15	119.8 (4)
C1—C6—C5	117.6 (3)	C13—C14—H14A	120.1
C1—C6—C7	122.5 (3)	C15—C14—H14A	120.1
C5—C6—C7	119.9 (3)	C14—C15—C10	121.4 (3)
N1—C7—C6	122.5 (3)	C14—C15—H15A	119.3
N1—C7—C8	120.9 (3)	C10—C15—H15A	119.3
C6—C7—C8	116.5 (3)		
O1 ⁱ —Pd1—O1—C1	-151 (100)	C4—C5—C6—C7	179.6 (3)
N1 ⁱ —Pd1—O1—C1	138.5 (2)	C9—N1—C7—C6	-178.3 (3)
N1—Pd1—O1—C1	-41.5 (2)	Pd1—N1—C7—C6	6.9 (4)
O1—Pd1—N1—C7	20.0 (3)	C9—N1—C7—C8	2.7 (4)
O1 ⁱ —Pd1—N1—C7	-160.0 (3)	Pd1—N1—C7—C8	-172.1 (2)
N1 ⁱ —Pd1—N1—C7	156 (100)	C1—C6—C7—N1	-24.1 (5)
O1—Pd1—N1—C9	-155.0 (2)	C5—C6—C7—N1	157.2 (3)
O1 ⁱ —Pd1—N1—C9	25.0 (2)	C1—C6—C7—C8	155.0 (3)
N1 ⁱ —Pd1—N1—C9	-19 (100)	C5—C6—C7—C8	-23.7 (5)
Pd1—O1—C1—C2	-144.1 (2)	C7—N1—C9—C10	-89.1 (3)
Pd1—O1—C1—C6	38.9 (4)	Pd1—N1—C9—C10	86.1 (3)

O1—C1—C2—C3	-178.7 (3)	N1—C9—C10—C11	17.5 (4)
C6—C1—C2—C3	-1.5 (5)	N1—C9—C10—C15	-163.5 (3)
C1—C2—C3—C4	0.7 (6)	C15—C10—C11—C12	-0.5 (6)
C2—C3—C4—C5	1.0 (6)	C9—C10—C11—C12	178.6 (4)
C3—C4—C5—C6	-1.8 (6)	C10—C11—C12—C13	-0.1 (7)
O1—C1—C6—C5	177.7 (3)	C11—C12—C13—C14	0.5 (8)
C2—C1—C6—C5	0.7 (4)	C12—C13—C14—C15	-0.3 (7)
O1—C1—C6—C7	-1.0 (5)	C13—C14—C15—C10	-0.3 (6)
C2—C1—C6—C7	-178.0 (3)	C11—C10—C15—C14	0.7 (5)
C4—C5—C6—C1	0.9 (5)	C9—C10—C15—C14	-178.4 (3)

Symmetry code: (i) $-x+1, -y+1, -z$.

Hydrogen-bond geometry (\AA , $^\circ$)

Cg3 and Cg4 are the centroids of the ???? and ???? rings, respectively.

$D-H\cdots A$	$D-H$	$H\cdots A$	$D\cdots A$	$D-H\cdots A$
C9—H9A \cdots O1 ⁱ	0.97	2.18	2.862 (4)	127
C11—H11A \cdots N1	0.93	2.58	2.900 (5)	101
C8—H8B \cdots Cg4 ⁱⁱ	0.96	2.57	3.523 (5)	172
C13—H13A \cdots Cg3 ⁱⁱⁱ	0.93	2.87	3.626 (5)	139

Symmetry codes: (i) $-x+1, -y+1, -z$; (ii) $x-1/2, -y+1/2, z-1/2$; (iii) $-x+1, -y+2, -z$.