

Acta Crystallographica Section E

Structure Reports

Online

ISSN 1600-5368

Bis(2-acetylpyridine- κ^2N,O)silver(I) tetrafluoroborate: a complex with silver in a seesaw coordination geometry

Michael A. O'Donnell and Peter J. Steel*

Chemistry Department, University of Canterbury, PO Box 4800, Christchurch, New Zealand

Correspondence e-mail: peter.steel@canterbury.ac.nz

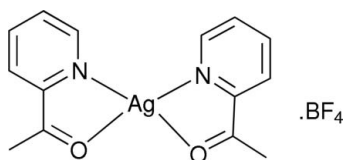
Received 11 November 2010; accepted 18 November 2010

Key indicators: single-crystal X-ray study; $T = 116$ K; mean $\sigma(C-C) = 0.003$ Å; disorder in solvent or counterion; R factor = 0.024; wR factor = 0.051; data-to-parameter ratio = 14.8.

The reaction of 2-acetylpyridine with silver(I) tetrafluoroborate leads to the discrete title complex, $[Ag(C_7H_7NO)_2]BF_4$, in the cation of which the Ag atom is coordinated by two 2-acetylpyridine ligands, each of which is N,O -bidentate, albeit with stronger bonding to the N atoms [$Ag-N = 2.2018$ (15) and 2.2088 (14) Å; $Ag-O = 2.5380$ (13) and 2.5454 (13) Å]. The four-coordinate Ag atom has a seesaw coordination geometry with a τ_4 index of 0.51. The tetrafluoroborate anion is disordered over two orientations with 0.568 (10):0.432 (10) occupancies.

Related literature

For other silver complexes with the same ligand, see: Bowmaker *et al.* (2005); Drew *et al.* (2005); Di Nicola *et al.* (2010). For examples of our previous work on silver complexes, see: Steel (2005); Fitchett & Steel (2006); O'Keefe & Steel (2007); Steel & Fitchett (2008); Golder *et al.* (2010). For details of the coordination geometry of four-coordinate silver, see: Young & Hanton (2008). For a definition of the τ_4 index, see: Yang *et al.* (2007). 2-acetylpyridine coordinates to a variety of transition metals, usually as an N,O -chelating ligand, although it has been reported to act as an O -monodentate donor to a zinc porphyrin, see: Byrn *et al.* (1993).



Experimental

Crystal data

$[Ag(C_7H_7NO)_2]BF_4$	$\gamma = 75.054$ (2)°
$M_r = 436.95$	$V = 790.34$ (4) Å ³
Triclinic, $P\bar{1}$	$Z = 2$
$a = 7.2635$ (2) Å	Mo $K\alpha$ radiation
$b = 9.7091$ (3) Å	$\mu = 1.33$ mm ⁻¹
$c = 11.7390$ (4) Å	$T = 116$ K
$\alpha = 85.624$ (2)°	$0.37 \times 0.36 \times 0.14$ mm
$\beta = 81.452$ (2)°	

Data collection

Bruker SMART CCD area-detector diffractometer	18086 measured reflections
Absorption correction: multi-scan (SADABS; Bruker, 2009)	3661 independent reflections
$T_{min} = 0.805$, $T_{max} = 1.000$	3255 reflections with $I > 2\sigma(I)$
	$R_{int} = 0.042$

Refinement

$R[F^2 > 2\sigma(F^2)] = 0.024$	247 parameters
$wR(F^2) = 0.051$	H-atom parameters constrained
$S = 1.01$	$\Delta\rho_{max} = 0.33$ e Å ⁻³
3661 reflections	$\Delta\rho_{min} = -0.47$ e Å ⁻³

Table 1

Selected bond angles (°).

N9—Ag1—N1	165.92 (6)	N9—Ag1—O7	121.62 (5)
N9—Ag1—O15	70.09 (5)	N1—Ag1—O7	69.62 (5)
N1—Ag1—O15	122.03 (5)	O15—Ag1—O7	83.23 (5)

Data collection: *SMART* (Bruker, 2009); cell refinement: *SAINTE* (Bruker, 2009); data reduction: *SAINTE*; program(s) used to solve structure: *SHELXS97* (Sheldrick, 2008); program(s) used to refine structure: *SHELXL97* (Sheldrick, 2008); molecular graphics: *SHELXTL* (Sheldrick, 2008); software used to prepare material for publication: *SHELXTL*.

We thank the Chemistry Department, University of Canterbury, New Zealand, for funding.

Supplementary data and figures for this paper are available from the IUCr electronic archives (Reference: ZS2079).

References

- Bowmaker, G. A., Effendy, Nitiatmodjo, M., Skelton, B. W. & White, A. H. (2005). *Inorg. Chim. Acta*, **358**, 4327–4341.
- Bruker (2009). *SMART, SAINTE* and *SADABS*. Bruker AXS Inc., Madison, Wisconsin, USA.
- Byrn, M. P., Curtis, C. J., Hsiou, Y., Khan, S. I., Sawin, P. A., Tendick, S. K., Terzis, A. & Strouse, C. E. (1993). *J. Am. Chem. Soc.* **115**, 9480–9497.
- Di Nicola, C., Effendy, Marchetti, F., Nervi, C., Pettinari, C., Robinson, W. T., Sobolev, A. N. & White, A. H. (2010). *Dalton Trans.* pp. 908–922.
- Drew, M. G. B., Naskar, J. P., Chowdhury, S. & Datta, D. (2005). *Eur. J. Inorg. Chem.* pp. 4834–4839.
- Fitchett, C. M. & Steel, P. J. (2006). *Dalton Trans.* pp. 4886–4888.
- Golder, R. K., Fitchett, C. M., Wikaira, J. L. & Steel, P. J. (2010). *Acta Cryst. E66*, m1324.
- O'Keefe, B. J. & Steel, P. J. (2007). *CrystEngComm*, **9**, 222–227.
- Sheldrick, G. M. (2008). *Acta Cryst. A64*, 112–122.
- Steel, P. J. (2005). *Acc. Chem. Res.* **38**, 243–250.
- Steel, P. J. & Fitchett, C. M. (2008). *Coord. Chem. Rev.* **205**, 990–1006.
- Yang, L., Powell, D. R. & Houser, R. P. (2007). *Dalton Trans.* pp. 955–964.
- Young, A. G. & Hanton, L. R. (2008). *Coord. Chem. Rev.* **252**, 1346–1386.

supporting information

Acta Cryst. (2010). E66, m1630 [https://doi.org/10.1107/S1600536810048014]

Bis(2-acetylpyridine- κ^2N,O)silver(I) tetrafluoridoborate: a complex with silver in a seesaw coordination geometry

Michael A. O'Donnell and Peter J. Steel

S1. Comment

For some time we have been involved in the study of silver complexes of chelating and bridging heterocyclic ligands (Steel, 2005; Fitchett & Steel, 2006; O'Keefe & Steel, 2007; Steel & Fitchett, 2008; Golder *et al.*, 2010). 2-acetylpyridine coordinates to a variety of transition metals, usually as an N,*O*-chelating ligand, although it has been reported to act as an O-monodentate donor to a zinc porphyrin (Byrn *et al.*, 1993). X-ray crystal structures have been reported for complexes of 2-acetylpyridine with silver(I) perchlorate (Bowmaker *et al.*, 2005; Drew *et al.*, 2005), trifluoroacetate (Bowmaker *et al.*, 2005), trifluoromethanesulfonate (Di Nicola *et al.*, 2010) and nitrate (Bowmaker *et al.*, 2005). The latter has a single 2-acetylpyridine bound to the silver with a chelating nitrate anion, while the others have two chelating 2-acetylpyridine ligands. We now report the structure of its complex with silver(I) tetrafluoridoborate, the title compound [Ag(C₇H₇NO)₂]BF₄ (I).

In (I), the asymmetric unit contains a complex cation comprising a silver(I) atom bound to two bidentate N,*O*-chelated 2-acetylpyridine ligands [Ag—N, 2.2018 (15), 2.2088 (14) Å; Ag—O, 2.5380 (13), 2.5454 (13) Å], and a tetrafluoridoborate counter-anion (Fig. 1). The tetrafluoridoborate anion is disordered over two orientations with relative F occupancies of 57:43% about a common central B. Since the silver atom makes no other contacts less than 2.72 Å it should be classified as four-coordinate (Young & Hanton, 2008). Calculation of the τ_4 index (Yang *et al.*, 2007) produces a value of 0.51 which means that the geometry around the silver should be described as seesaw.

S2. Experimental

The title compound was prepared by diffusion of pentane into a methanol solution of a mixture of 2-acetylpyridine and silver(I) tetrafluoridoborate.

S3. Refinement

Hydrogen atoms were included in calculated positions as riding atoms, with $U_{\text{iso}}(\text{H}) = 1.2U_{\text{eq}}(\text{C})$ for the pyridine H atoms and $U_{\text{iso}}(\text{H}) = 1.5U_{\text{eq}}(\text{C})$ for the acetyl H atoms. The occupancies for the disordered F atoms of the BF₄ anion were 0.568 (10)/0.432 (10) and were fixed at 0.57/0.43 in the refinement.

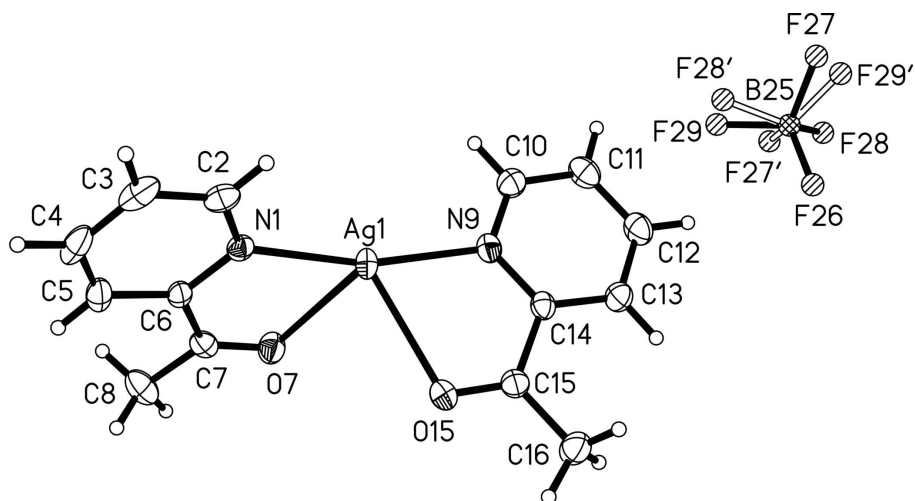


Figure 1

The molecular structure of the title complex, showing displacement ellipsoids at the 50% probability level.

Bis(2-acetylpyridine- κ^2N,O)silver(I) tetrafluoridoborate

Crystal data

[Ag(C₇H₇NO)₂]BF₄

$M_r = 436.95$

Triclinic, $P\bar{1}$

Hall symbol: $-P\ 1$

$a = 7.2635$ (2) Å

$b = 9.7091$ (3) Å

$c = 11.7390$ (4) Å

$\alpha = 85.624$ (2)°

$\beta = 81.452$ (2)°

$\gamma = 75.054$ (2)°

$V = 790.34$ (4) Å³

$Z = 2$

$F(000) = 432$

$D_x = 1.836$ Mg m⁻³

Mo $K\alpha$ radiation, $\lambda = 0.71073$ Å

Cell parameters from 8378 reflections

$\theta = 2.7$ – 27.6 °

$\mu = 1.33$ mm⁻¹

$T = 116$ K

Block, colourless

$0.37 \times 0.36 \times 0.14$ mm

Data collection

Bruker SMART CCD area-detector
diffractometer

Radiation source: fine-focus sealed tube

Graphite monochromator

φ and ω scans

Absorption correction: multi-scan

(*SADABS*; Bruker, 2009)

$T_{\min} = 0.805$, $T_{\max} = 1.000$

18086 measured reflections

3661 independent reflections

3255 reflections with $I > 2\sigma(I)$

$R_{\text{int}} = 0.042$

$\theta_{\max} = 27.6$ °, $\theta_{\min} = 2.7$ °

$h = -9 \rightarrow 9$

$k = -12 \rightarrow 12$

$l = -15 \rightarrow 15$

Refinement

Refinement on F^2

Least-squares matrix: full

$R[F^2 > 2\sigma(F^2)] = 0.024$

$wR(F^2) = 0.051$

$S = 1.01$

3661 reflections

247 parameters

0 restraints

Primary atom site location: structure-invariant
direct methods

Secondary atom site location: difference Fourier
map

Hydrogen site location: inferred from
neighbouring sites

H-atom parameters constrained

$$w = 1/[\sigma^2(F_o^2) + (0.0251P)^2]$$

where $P = (F_o^2 + 2F_c^2)/3$
 $(\Delta/\sigma)_{\max} = 0.001$

$$\Delta\rho_{\max} = 0.33 \text{ e } \text{\AA}^{-3}$$

$$\Delta\rho_{\min} = -0.47 \text{ e } \text{\AA}^{-3}$$

Special details

Geometry. All e.s.d.'s (except the e.s.d. in the dihedral angle between two l.s. planes) are estimated using the full covariance matrix. The cell e.s.d.'s are taken into account individually in the estimation of e.s.d.'s in distances, angles and torsion angles; correlations between e.s.d.'s in cell parameters are only used when they are defined by crystal symmetry. An approximate (isotropic) treatment of cell e.s.d.'s is used for estimating e.s.d.'s involving l.s. planes.

Refinement. Refinement of F^2 against ALL reflections. The weighted R -factor wR and goodness of fit S are based on F^2 , conventional R -factors R are based on F , with F set to zero for negative F^2 . The threshold expression of $F^2 > \sigma(F^2)$ is used only for calculating R -factors(gt) etc. and is not relevant to the choice of reflections for refinement. R -factors based on F^2 are statistically about twice as large as those based on F , and R -factors based on ALL data will be even larger.

Fractional atomic coordinates and isotropic or equivalent isotropic displacement parameters (\AA^2)

	<i>x</i>	<i>y</i>	<i>z</i>	$U_{\text{iso}}^*/U_{\text{eq}}$	Occ. (<1)
Ag1	0.62372 (2)	0.358455 (15)	0.216889 (12)	0.02670 (6)	
N1	0.7431 (2)	0.40200 (16)	0.03743 (13)	0.0200 (3)	
C2	0.8515 (3)	0.2955 (2)	-0.02733 (17)	0.0266 (4)	
H2	0.8596	0.2001	0.0010	0.032*	
C3	0.9529 (3)	0.3180 (3)	-0.13419 (18)	0.0338 (5)	
H3	1.0279	0.2398	-0.1781	0.041*	
C4	0.9425 (3)	0.4558 (3)	-0.17500 (17)	0.0350 (5)	
H4	1.0125	0.4742	-0.2471	0.042*	
C5	0.8291 (3)	0.5676 (2)	-0.10994 (16)	0.0279 (5)	
H5	0.8186	0.6635	-0.1375	0.033*	
C6	0.7311 (3)	0.53789 (19)	-0.00415 (15)	0.0200 (4)	
O7	0.5413 (2)	0.62559 (14)	0.16893 (11)	0.0279 (3)	
C7	0.6095 (3)	0.65429 (19)	0.07221 (16)	0.0227 (4)	
C8	0.5744 (3)	0.8064 (2)	0.0268 (2)	0.0353 (5)	
H8A	0.4863	0.8686	0.0840	0.053*	
H8B	0.5175	0.8157	-0.0449	0.053*	
H8C	0.6966	0.8340	0.0117	0.053*	
N9	0.4948 (2)	0.26845 (16)	0.37767 (14)	0.0238 (4)	
C10	0.3564 (3)	0.1997 (2)	0.37892 (17)	0.0281 (4)	
H10	0.3117	0.1917	0.3082	0.034*	
C11	0.2753 (3)	0.1397 (2)	0.47867 (18)	0.0299 (5)	
H11	0.1757	0.0933	0.4765	0.036*	
C12	0.3420 (3)	0.1486 (2)	0.58052 (17)	0.0299 (5)	
H12	0.2899	0.1077	0.6500	0.036*	
C13	0.4870 (3)	0.2183 (2)	0.58072 (16)	0.0262 (4)	
H13	0.5360	0.2250	0.6502	0.031*	
C14	0.5589 (3)	0.27780 (19)	0.47815 (15)	0.0211 (4)	
O15	0.7480 (2)	0.43100 (16)	0.38824 (12)	0.0414 (4)	
C15	0.7082 (3)	0.3619 (2)	0.47483 (16)	0.0235 (4)	
C16	0.7981 (3)	0.3629 (2)	0.58006 (17)	0.0327 (5)	
H16A	0.6993	0.4069	0.6420	0.049*	
H16B	0.8956	0.4177	0.5638	0.049*	

H16C	0.8587	0.2647	0.6040	0.049*	
B25	0.9904 (3)	0.9500 (2)	0.7668 (2)	0.0297 (5)	
F26	1.1442 (2)	0.96995 (15)	0.81393 (12)	0.0499 (4)	
F27	1.0213 (7)	0.8050 (5)	0.7373 (6)	0.0530 (14)	0.568 (10)
F28	0.8389 (6)	0.9732 (7)	0.8535 (4)	0.0778 (17)	0.568 (10)
F29	0.9559 (8)	1.0366 (5)	0.6754 (4)	0.0486 (13)	0.568 (10)
F27'	0.8174 (6)	1.0520 (7)	0.7916 (8)	0.080 (3)	0.432 (10)
F28'	1.0393 (11)	0.9638 (11)	0.6459 (4)	0.059 (2)	0.432 (10)
F29'	0.9705 (11)	0.8213 (7)	0.7954 (6)	0.0507 (17)	0.432 (10)

Atomic displacement parameters (Å²)

	U^{11}	U^{22}	U^{33}	U^{12}	U^{13}	U^{23}
Ag1	0.03524 (10)	0.02888 (9)	0.01804 (8)	-0.01335 (7)	-0.00432 (6)	0.00624 (6)
N1	0.0188 (8)	0.0235 (8)	0.0192 (8)	-0.0063 (7)	-0.0057 (6)	-0.0002 (6)
C2	0.0221 (11)	0.0319 (11)	0.0285 (10)	-0.0069 (9)	-0.0088 (8)	-0.0063 (8)
C3	0.0235 (11)	0.0533 (15)	0.0262 (11)	-0.0086 (10)	-0.0028 (8)	-0.0161 (10)
C4	0.0231 (11)	0.0685 (16)	0.0166 (10)	-0.0177 (11)	-0.0005 (8)	-0.0047 (10)
C5	0.0226 (11)	0.0441 (13)	0.0214 (10)	-0.0163 (9)	-0.0076 (8)	0.0088 (9)
C6	0.0176 (10)	0.0269 (10)	0.0183 (9)	-0.0094 (8)	-0.0073 (7)	0.0039 (7)
O7	0.0334 (8)	0.0262 (7)	0.0217 (7)	-0.0048 (6)	-0.0011 (6)	-0.0005 (6)
C7	0.0180 (10)	0.0233 (10)	0.0286 (10)	-0.0070 (8)	-0.0081 (8)	0.0038 (8)
C8	0.0332 (13)	0.0251 (11)	0.0470 (14)	-0.0087 (9)	-0.0058 (10)	0.0083 (9)
N9	0.0267 (9)	0.0215 (8)	0.0229 (8)	-0.0064 (7)	-0.0042 (7)	0.0035 (6)
C10	0.0287 (12)	0.0309 (11)	0.0270 (10)	-0.0101 (9)	-0.0074 (8)	0.0015 (8)
C11	0.0241 (11)	0.0300 (11)	0.0353 (12)	-0.0102 (9)	0.0027 (9)	-0.0001 (9)
C12	0.0320 (12)	0.0300 (11)	0.0261 (11)	-0.0109 (9)	0.0063 (8)	-0.0005 (8)
C13	0.0306 (12)	0.0272 (10)	0.0198 (10)	-0.0072 (9)	0.0008 (8)	-0.0031 (8)
C14	0.0235 (10)	0.0177 (9)	0.0198 (9)	-0.0026 (7)	-0.0008 (7)	0.0001 (7)
O15	0.0635 (11)	0.0464 (10)	0.0277 (8)	-0.0383 (9)	-0.0109 (7)	0.0100 (7)
C15	0.0271 (11)	0.0206 (9)	0.0219 (10)	-0.0050 (8)	-0.0008 (8)	-0.0030 (7)
C16	0.0323 (12)	0.0444 (13)	0.0245 (11)	-0.0153 (10)	-0.0037 (9)	-0.0002 (9)
B25	0.0255 (13)	0.0262 (12)	0.0366 (13)	-0.0086 (10)	-0.0009 (10)	0.0049 (10)
F26	0.0574 (10)	0.0577 (9)	0.0475 (9)	-0.0335 (8)	-0.0209 (7)	0.0115 (7)
F27	0.040 (2)	0.0249 (14)	0.099 (4)	-0.0053 (14)	-0.028 (2)	-0.003 (2)
F28	0.047 (2)	0.097 (4)	0.071 (3)	-0.009 (2)	0.0300 (17)	0.005 (2)
F29	0.060 (3)	0.043 (2)	0.051 (2)	-0.026 (2)	-0.022 (2)	0.0213 (17)
F27'	0.043 (3)	0.065 (4)	0.118 (7)	0.018 (2)	-0.011 (3)	-0.027 (4)
F28'	0.065 (4)	0.098 (6)	0.031 (2)	-0.053 (4)	-0.006 (2)	0.015 (3)
F29'	0.063 (4)	0.034 (3)	0.067 (4)	-0.030 (3)	-0.022 (3)	0.022 (3)

Geometric parameters (Å, °)

Ag1—N1	2.2088 (14)	C10—C11	1.388 (3)
Ag1—N9	2.2018 (15)	C10—H10	0.9500
Ag1—O7	2.5454 (13)	C11—C12	1.372 (3)
Ag1—O15	2.5380 (15)	C11—H11	0.9500
N1—C2	1.338 (2)	C12—C13	1.391 (3)

N1—C6	1.357 (2)	C12—H12	0.9500
C2—C3	1.389 (3)	C13—C14	1.385 (2)
C2—H2	0.9500	C13—H13	0.9500
C3—C4	1.373 (3)	C14—C15	1.510 (3)
C3—H3	0.9500	O15—C15	1.215 (2)
C4—C5	1.385 (3)	C15—C16	1.482 (3)
C4—H4	0.9500	C16—H16A	0.9800
C5—C6	1.386 (2)	C16—H16B	0.9800
C5—H5	0.9500	C16—H16C	0.9800
C6—C7	1.505 (3)	B25—F29'	1.307 (6)
O7—C7	1.212 (2)	B25—F29	1.324 (4)
C7—C8	1.502 (2)	B25—F28	1.368 (4)
C8—H8A	0.9800	B25—F26	1.380 (3)
C8—H8B	0.9800	B25—F27'	1.393 (5)
C8—H8C	0.9800	B25—F28'	1.415 (5)
N9—C10	1.340 (2)	B25—F27	1.428 (5)
N9—C14	1.348 (2)		
N9—Ag1—N1	165.92 (6)	N9—C10—C11	123.05 (19)
N9—Ag1—O15	70.09 (5)	N9—C10—H10	118.5
N1—Ag1—O15	122.03 (5)	C11—C10—H10	118.5
N9—Ag1—O7	121.62 (5)	C12—C11—C10	118.66 (19)
N1—Ag1—O7	69.62 (5)	C12—C11—H11	120.7
O15—Ag1—O7	83.23 (5)	C10—C11—H11	120.7
C2—N1—C6	118.14 (16)	C11—C12—C13	119.11 (17)
C2—N1—Ag1	120.49 (12)	C11—C12—H12	120.4
C6—N1—Ag1	120.74 (13)	C13—C12—H12	120.4
N1—C2—C3	122.97 (19)	C14—C13—C12	119.07 (19)
N1—C2—H2	118.5	C14—C13—H13	120.5
C3—C2—H2	118.5	C12—C13—H13	120.5
C4—C3—C2	118.6 (2)	N9—C14—C13	122.03 (17)
C4—C3—H3	120.7	N9—C14—C15	116.76 (15)
C2—C3—H3	120.7	C13—C14—C15	121.16 (18)
C3—C4—C5	119.31 (18)	C15—O15—Ag1	110.96 (13)
C3—C4—H4	120.3	O15—C15—C16	121.06 (18)
C5—C4—H4	120.3	O15—C15—C14	120.05 (18)
C4—C5—C6	119.22 (19)	C16—C15—C14	118.84 (15)
C4—C5—H5	120.4	C15—C16—H16A	109.5
C6—C5—H5	120.4	C15—C16—H16B	109.5
N1—C6—C5	121.73 (18)	H16A—C16—H16B	109.5
N1—C6—C7	116.32 (15)	C15—C16—H16C	109.5
C5—C6—C7	121.93 (17)	H16A—C16—H16C	109.5
C7—O7—Ag1	112.42 (12)	H16B—C16—H16C	109.5
O7—C7—C8	120.55 (19)	F29—B25—F28	112.6 (3)
O7—C7—C6	120.42 (16)	F29'—B25—F26	109.0 (3)
C8—C7—C6	119.04 (17)	F29—B25—F26	111.2 (2)
C7—C8—H8A	109.5	F28—B25—F26	105.6 (3)
C7—C8—H8B	109.5	F29'—B25—F27'	111.3 (4)

H8A—C8—H8B	109.5	F26—B25—F27'	115.8 (3)
C7—C8—H8C	109.5	F29'—B25—F28'	109.9 (4)
H8A—C8—H8C	109.5	F26—B25—F28'	105.7 (3)
H8B—C8—H8C	109.5	F27'—B25—F28'	104.8 (3)
C10—N9—C14	118.07 (16)	F29—B25—F27	110.4 (3)
C10—N9—Ag1	121.89 (13)	F28—B25—F27	105.7 (3)
C14—N9—Ag1	120.00 (12)	F26—B25—F27	111.2 (3)
