

Acta Crystallographica Section E

Structure Reports

Online

ISSN 1600-5368

2-Phenyl-7-(4-pyridylmethylamino)-1,2,4-triazolo[1,5-a][1,3,5]triazin-5(4H)-one¹

 Anton V. Dolzhenko,^{a,*§} Geok Kheng Tan,^b Anna V. Dolzhenko,^c Lip Lin Koh^b and Wai Keung Chui^d

^aSchool of Pharmacy, Faculty of Health Sciences, Curtin University of Technology, GPO Box U1987, Perth 6845, Western Australia, Australia, ^bDepartment of Chemistry, Faculty of Science, National University of Singapore, 3 Science Drive 3, Singapore 117543, Singapore, ^cPerm State Pharmaceutical Academy, 2 Poleyvaya Street, Perm 614990, Russian Federation, and ^dDepartment of Pharmacy, Faculty of Science, National University of Singapore, 18 Science Drive 4, Singapore 117543, Singapore

Correspondence e-mail: Anton.Dolzhenko@curtin.edu.au

Received 26 November 2010; accepted 6 December 2010

 Key indicators: single-crystal X-ray study; $T = 100$ K; mean $\sigma(C-C) = 0.007$ Å; R factor = 0.067; wR factor = 0.145; data-to-parameter ratio = 8.1.

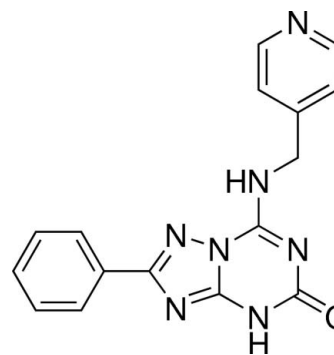
In the title compound, $C_{16}H_{13}N_7O$, the 1,2,4-triazolo[1,5-*a*][1,3,5]triazine heterocyclic system is essentially planar (r.m.s. deviation = 0.0375 Å). The attached benzene ring lies almost in the mean plane of 1,2,4-triazolo[1,5-*a*][1,3,5]triazine [dihedral angle = 1.36 (23)°], while the pyridine ring is turned out of this plane by the aminomethyl bridge [dihedral angle = 69.22 (9)°]. The amino group H atom is involved in intramolecular hydrogen bonding with a triazole N atom. In the crystal, molecules are connected *via* $C(=O)NH \cdots N$ hydrogen bonds into $C(11)$ chains parallel to [100]. The amino group H atom acts as a hydrogen-bond donor, forming an $NH \cdots O=C$ hydrogen bond with the carbonyl O atom, which links the molecules into $C(6)$ chains running along [011] and [01 $\bar{1}$].

Related literature

For review on the synthesis and biological activity of 1,2,4-triazolo[1,5-*a*][1,3,5]triazines, see: Dolzhenko *et al.* (2006). For our work on the synthesis, crystal structure studies and biological activity of 1,2,4-triazolo[1,5-*a*][1,3,5]triazine, see: Dolzhenko *et al.* (2007*a,b*, 2008). For graph-set analysis of hydrogen bonding, see: Bernstein *et al.* (1995). For a related structure, see: Dolzhenko *et al.* (2011).

¹ Fused heterocyclic systems with *s*-triazine ring. Part 17. For part 16, see Dolzhenko *et al.* (2011).

§ Thomson Reuters ResearcherID: B-1130-2008.



Experimental

Crystal data

$C_{16}H_{13}N_7O$
 $M_r = 319.33$
 Orthorhombic, $Pna2_1$
 $a = 22.142$ (8) Å
 $b = 11.016$ (4) Å
 $c = 5.992$ (2) Å
 $V = 1461.5$ (9) Å³
 $Z = 4$
 Mo $K\alpha$ radiation
 $\mu = 0.10$ mm⁻¹
 $T = 100$ K
 $0.58 \times 0.36 \times 0.04$ mm

Data collection

Bruker SMART APEX CCD diffractometer
 Absorption correction: multi-scan (SADABS; Sheldrick, 2001)
 $T_{min} = 0.945$, $T_{max} = 0.996$
 9607 measured reflections
 1830 independent reflections
 1530 reflections with $I > 2\sigma(I)$
 $R_{int} = 0.088$

Refinement

$R[F^2 > 2\sigma(F^2)] = 0.067$
 $wR(F^2) = 0.145$
 $S = 1.19$
 1830 reflections
 225 parameters
 1 restraint
 H atoms treated by a mixture of independent and constrained refinement
 $\Delta\rho_{max} = 0.35$ e Å⁻³
 $\Delta\rho_{min} = -0.27$ e Å⁻³

Table 1

Hydrogen-bond geometry (Å, °).

$D-H \cdots A$	$D-H$	$H \cdots A$	$D \cdots A$	$D-H \cdots A$
$N5-H5N \cdots N7^i$	0.90 (4)	1.89 (4)	2.782 (5)	173 (4)
$N6-H6N \cdots O1^{ii}$	0.95 (6)	1.96 (5)	2.735 (5)	137 (4)
$N6-H6N \cdots N1$	0.95 (6)	2.31 (5)	2.813 (5)	112 (4)

Symmetry codes: (i) $x + \frac{1}{2}, -y + \frac{1}{2}, z$; (ii) $-x + \frac{3}{2}, y - \frac{1}{2}, z + \frac{1}{2}$.

Data collection: SMART (Bruker, 2001); cell refinement: SAINT (Bruker, 2001); data reduction: SAINT; program(s) used to solve structure: SHELXS97 (Sheldrick, 2008); program(s) used to refine structure: SHELXL97 (Sheldrick, 2008); molecular graphics: SHELXTL (Sheldrick, 2008); software used to prepare material for publication: SHELXTL.

This work was supported by the School of Pharmacy, Curtin University of Technology and the National Medical Research Council, Singapore (NMRC/NIG/0019/2008).

Supplementary data and figures for this paper are available from the IUCr electronic archives (Reference: HG2761).

References

- Bernstein, J., Davis, R. E., Shimoni, L. & Chang, N. L. (1995). *Angew. Chem. Int. Ed. Engl.* **34**, 1555–1573.
- Bruker (2001). *SMART* and *SAINT*. Bruker AXS GmbH, Karlsruhe, Germany.
- Dolzhenko, A. V., Dolzhenko, A. V. & Chui, W. K. (2006). *Heterocycles*, **68**, 1723–1759.
- Dolzhenko, A. V., Dolzhenko, A. V. & Chui, W. K. (2007a). *Heterocycles*, **71**, 429–436.
- Dolzhenko, A. V., Dolzhenko, A. V. & Chui, W. K. (2007b). *Tetrahedron*, **63**, 12888–12895.
- Dolzhenko, A. V., Pastorin, G., Dolzhenko, A. V. & Chui, W. K. (2008). *Tetrahedron Lett.* **49**, 7180–7183.
- Dolzhenko, A. V., Tan, G. K., Dolzhenko, A. V., Koh, L. L. & Chui, W. K. (2011). *Acta Cryst.* **E67**, o83–o84.
- Sheldrick, G. M. (2001). *SADABS*. University of Göttingen, Germany.
- Sheldrick, G. M. (2008). *Acta Cryst.* **A64**, 112–122.

supporting information

Acta Cryst. (2011). E67, o85–o86 [https://doi.org/10.1107/S1600536810051032]

2-Phenyl-7-(4-pyridylmethylamino)-1,2,4-triazolo[1,5-*a*][1,3,5]triazin-5(4*H*)-one

Anton V. Dolzhenko, Geok Kheng Tan, Anna V. Dolzhenko, Lip Lin Koh and Wai Keung Chui

S1. Comment

The 1,2,4-triazolo[1,5-*a*]triazines are 5-azaisosters of the purine heterocyclic system that carries a bridge nitrogen atom. They have been shown to possess a variety of promising biological effects (Dolzhenko *et al.*, 2006). In continuation of our works on the synthesis and structural investigations of 1,2,4-triazolo[1,5-*a*][1,3,5]triazines (Dolzhenko *et al.*, 2007*a,b*; Dolzhenko *et al.*, 2008), we report herein molecular and crystal structure of 2-phenyl-7-(4-pyridylmethylamino)-1,2,4-triazolo[1,5-*a*][1,3,5]triazin-5-one, C₁₆H₁₃N₇O. (Fig. 1 & 2).

The 1,2,4-triazolo[1,5-*a*][1,3,5]triazine heterocyclic system is essentially planar with a r.m.s. deviation of 0.0375 Å. The phenyl ring lies practically in the plane of the 1,2,4-triazolo[1,5-*a*][1,3,5]triazine core (with a small dihedral angle of 1.36 (23)° between the mean planes). The amino group nitrogen atom N6 is located 0.2246 (50) Å above the 1,2,4-triazolo[1,5-*a*][1,3,5]triazine mean plane. The pyridine ring is turned out of this plane by twisting of the aminomethyl bridge [C3—N6—C11—C14 torsion angle is 118.50 (40)°]. This results in a dihedral angle of 69.22 (9)° between the 1,2,4-triazolo[1,5-*a*][1,3,5]triazine and pyridine mean planes. The amino group N6H hydrogen atom acts as a hydrogen donor in the NH⋯N intramolecular hydrogen bonding with the triazole N1 atom.

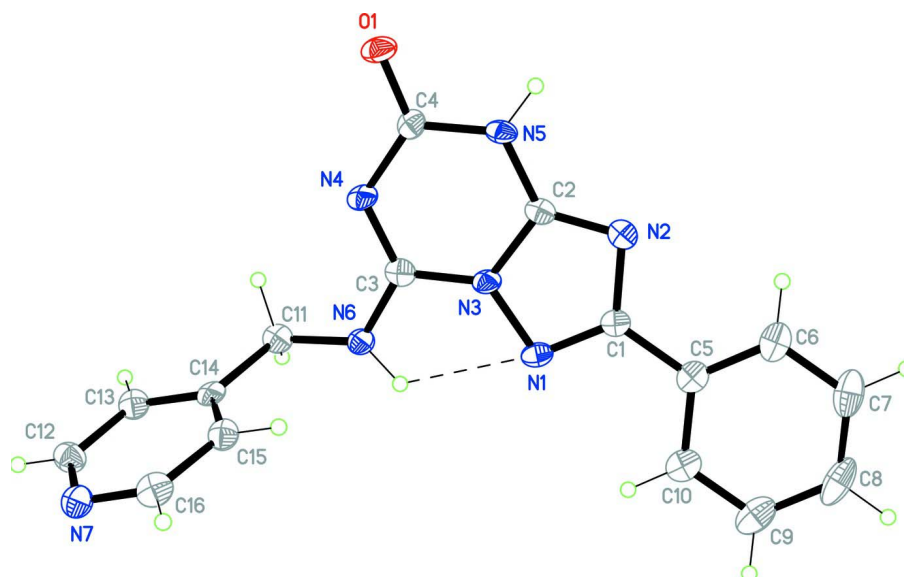
In the crystal, molecules form a three dimensional network of chains. The *C*(11) chains (Bernstein *et al.*, 1995) parallel to a [100] axis consist of the molecules linked *via* the CONH⋯N hydrogen bonds between the triazine N6H atom and the N7 atom of pyridine ring. The *C*(6) chains running along [011] and [01 $\bar{1}$] directions are made of the molecules connected *via* the NH⋯O=C contacts between the N6—H amino group acting as a hydrogen donor and the carbonyl group O1 atom in the role of a hydrogen acceptor.

S2. Experimental

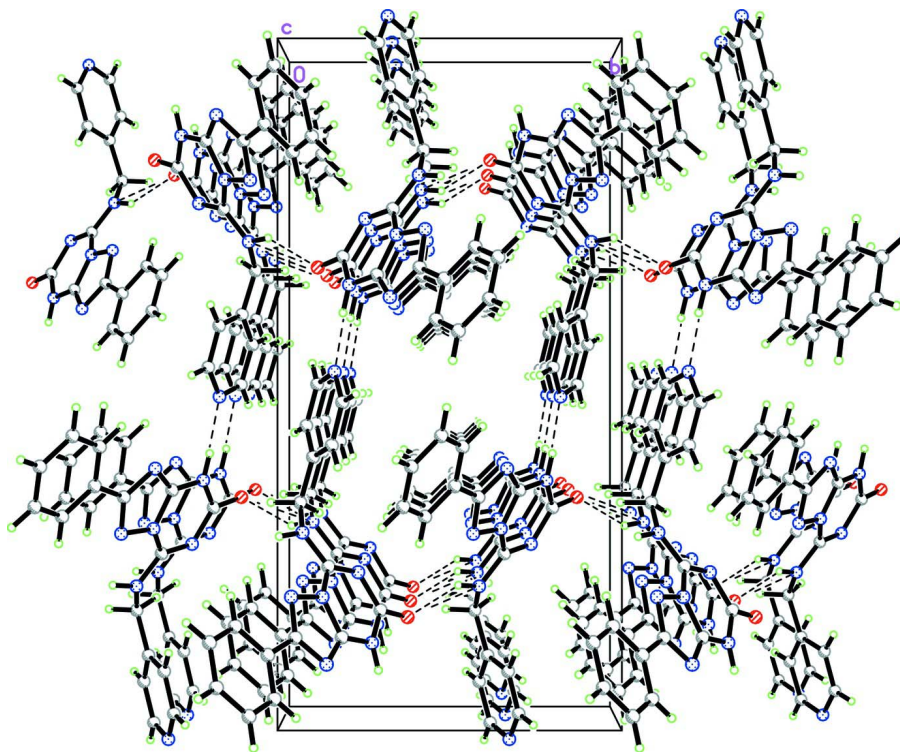
7-Methylthio-2-phenyl-1,2,4-triazole[1,5-*a*][1,3,5]triazin-5-one (0.52 g, 2 mmol) was added to a solution of 4-pyridylmethylamine (0.32 g, 3 mmol) in DMF (5 ml) and the mixture was heated at 70–80°C with stirring for 6 h. After cooling, ice cold water (40 ml) was added and the product was filtered and recrystallized from methanol. Yield: 0.56 g (87%), m.p. 567 K.

S3. Refinement

All C-bound H atoms were positioned geometrically and included in the refinement in riding-motion approximation [0.95 Å for aromatic CH and 0.99 Å for methylenic protons; $U_{\text{iso}}(\text{H}) = 1.2U_{\text{eq}}(\text{C}_{\text{Ar}})$ and $U_{\text{iso}}(\text{H}) = 1.2U_{\text{eq}}(\text{C}_{\text{methylenic}})$] while the N-bound H atoms were located in a difference map and refined freely. 1221 Friedel pairs were merged.

**Figure 1**

The molecular structure of 2-phenyl-7-(4-pyridylmethylamino)-1,2,4-triazolo[1,5-*a*][1,3,5]triazin-5-one showing the atomic numbering scheme. Displacement ellipsoids are drawn at the 50% probability level.

**Figure 2**

Crystal packing in the cell (view along axis *c*).

2-Phenyl-7-(4-pyridylmethylamino)-1,2,4-triazolo[1,5-a][1,3,5]triazin-5(4H)-one

Crystal data

C₁₆H₁₃N₇O $M_r = 319.33$ Orthorhombic, *Pna*2₁

Hall symbol: P 2c -2n

 $a = 22.142$ (8) Å $b = 11.016$ (4) Å $c = 5.992$ (2) Å $V = 1461.5$ (9) Å³ $Z = 4$ $F(000) = 664$ $D_x = 1.451$ Mg m⁻³

Melting point: 567 K

Mo *K*α radiation, $\lambda = 0.71073$ Å

Cell parameters from 569 reflections

 $\theta = 2.6$ – 21.1° $\mu = 0.10$ mm⁻¹ $T = 100$ K

Thin plate, colourless

 $0.58 \times 0.36 \times 0.04$ mm

Data collection

Bruker SMART APEX CCD

diffractometer

Radiation source: fine-focus sealed tube

Graphite monochromator

 φ and ω scans

Absorption correction: multi-scan

(SADABS; Sheldrick, 2001)

 $T_{\min} = 0.945$, $T_{\max} = 0.996$

9607 measured reflections

1830 independent reflections

1530 reflections with $I > 2\sigma(I)$ $R_{\text{int}} = 0.088$ $\theta_{\max} = 27.5^\circ$, $\theta_{\min} = 2.1^\circ$ $h = -25 \rightarrow 28$ $k = -14 \rightarrow 14$ $l = -7 \rightarrow 7$

Refinement

Refinement on F^2

Least-squares matrix: full

 $R[F^2 > 2\sigma(F^2)] = 0.067$ $wR(F^2) = 0.145$ $S = 1.19$

1830 reflections

225 parameters

1 restraint

Primary atom site location: structure-invariant

direct methods

Secondary atom site location: difference Fourier map

Hydrogen site location: inferred from neighbouring sites

H atoms treated by a mixture of independent and constrained refinement

 $w = 1/[\sigma^2(F_o^2) + (0.0695P)^2 + 0.135P]$ where $P = (F_o^2 + 2F_c^2)/3$ $(\Delta/\sigma)_{\max} < 0.001$ $\Delta\rho_{\max} = 0.35$ e Å⁻³ $\Delta\rho_{\min} = -0.27$ e Å⁻³

Special details

Geometry. All e.s.d.'s (except the e.s.d. in the dihedral angle between two l.s. planes) are estimated using the full covariance matrix. The cell e.s.d.'s are taken into account individually in the estimation of e.s.d.'s in distances, angles and torsion angles; correlations between e.s.d.'s in cell parameters are only used when they are defined by crystal symmetry. An approximate (isotropic) treatment of cell e.s.d.'s is used for estimating e.s.d.'s involving l.s. planes.

Refinement. Refinement of F^2 against ALL reflections. The weighted R -factor wR and goodness of fit S are based on F^2 , conventional R -factors R are based on F , with F set to zero for negative F^2 . The threshold expression of $F^2 > \sigma(F^2)$ is used only for calculating R -factors(gt) etc. and is not relevant to the choice of reflections for refinement. R -factors based on F^2 are statistically about twice as large as those based on F , and R -factors based on ALL data will be even larger.

Fractional atomic coordinates and isotropic or equivalent isotropic displacement parameters (Å²)

	<i>x</i>	<i>y</i>	<i>z</i>	$U_{\text{iso}}^*/U_{\text{eq}}$
O1	0.83275 (13)	0.3791 (3)	0.1382 (6)	0.0251 (8)
N1	0.78903 (15)	0.0671 (3)	0.7906 (7)	0.0191 (8)
N2	0.88088 (15)	0.1634 (3)	0.7854 (7)	0.0186 (8)

N3	0.79295 (15)	0.1475 (3)	0.6125 (6)	0.0174 (8)
N4	0.76558 (15)	0.2401 (3)	0.2791 (7)	0.0187 (8)
N5	0.86084 (16)	0.2819 (3)	0.4502 (6)	0.0186 (8)
H5N	0.900 (2)	0.301 (4)	0.429 (8)	0.018 (12)*
N6	0.70697 (15)	0.0862 (3)	0.4338 (6)	0.0201 (8)
H6N	0.712 (2)	0.025 (5)	0.544 (10)	0.039 (15)*
N7	0.48227 (17)	0.1748 (3)	0.3615 (7)	0.0236 (8)
C1	0.84184 (19)	0.0814 (4)	0.8851 (8)	0.0177 (9)
C2	0.84876 (18)	0.2014 (3)	0.6159 (7)	0.0166 (9)
C3	0.75455 (18)	0.1596 (3)	0.4347 (7)	0.0175 (9)
C4	0.81929 (18)	0.3037 (4)	0.2826 (8)	0.0183 (9)
C5	0.85949 (19)	0.0149 (4)	1.0875 (7)	0.0199 (9)
C6	0.9147 (2)	0.0359 (4)	1.1868 (8)	0.0264 (10)
H6	0.9422	0.0910	1.1197	0.032*
C7	0.9305 (2)	-0.0226 (4)	1.3837 (9)	0.0329 (12)
H7	0.9687	-0.0080	1.4504	0.040*
C8	0.8899 (3)	-0.1029 (4)	1.4827 (9)	0.0358 (13)
H8	0.9001	-0.1420	1.6190	0.043*
C9	0.8347 (2)	-0.1258 (4)	1.3827 (9)	0.0317 (11)
H9	0.8075	-0.1820	1.4492	0.038*
C10	0.8187 (2)	-0.0678 (4)	1.1872 (7)	0.0241 (10)
H10	0.7806	-0.0832	1.1201	0.029*
C11	0.66773 (18)	0.0743 (4)	0.2433 (7)	0.0206 (10)
H11A	0.6682	-0.0112	0.1928	0.025*
H11B	0.6838	0.1248	0.1202	0.025*
C12	0.49957 (19)	0.1204 (4)	0.1724 (8)	0.0242 (10)
H12	0.4698	0.1032	0.0627	0.029*
C13	0.55916 (19)	0.0879 (4)	0.1287 (8)	0.0218 (10)
H13	0.5698	0.0500	-0.0082	0.026*
C14	0.60260 (19)	0.1119 (4)	0.2896 (8)	0.0187 (9)
C15	0.58514 (19)	0.1699 (4)	0.4811 (8)	0.0211 (9)
H15	0.6141	0.1894	0.5923	0.025*
C16	0.5247 (2)	0.2002 (4)	0.5120 (8)	0.0245 (10)
H16	0.5133	0.2406	0.6456	0.029*

Atomic displacement parameters (\AA^2)

	U^{11}	U^{22}	U^{33}	U^{12}	U^{13}	U^{23}
O1	0.0245 (16)	0.0180 (14)	0.0328 (19)	0.0027 (12)	0.0069 (15)	0.0101 (15)
N1	0.0230 (18)	0.0146 (17)	0.0196 (17)	-0.0022 (14)	0.0025 (17)	0.0034 (15)
N2	0.0180 (18)	0.0137 (16)	0.0240 (18)	0.0024 (13)	0.0013 (16)	-0.0026 (16)
N3	0.0192 (17)	0.0115 (16)	0.022 (2)	-0.0018 (13)	0.0019 (15)	0.0038 (15)
N4	0.0214 (18)	0.0105 (16)	0.0241 (19)	0.0029 (13)	0.0030 (16)	0.0038 (16)
N5	0.0176 (18)	0.0123 (17)	0.026 (2)	-0.0018 (13)	0.0039 (16)	0.0019 (16)
N6	0.0173 (18)	0.0153 (17)	0.028 (2)	0.0014 (13)	-0.0002 (17)	0.0088 (17)
N7	0.0244 (19)	0.0164 (17)	0.030 (2)	0.0040 (15)	0.0003 (17)	0.0025 (17)
C1	0.020 (2)	0.0154 (19)	0.018 (2)	0.0020 (16)	0.0032 (18)	-0.0025 (18)
C2	0.018 (2)	0.0092 (17)	0.023 (2)	0.0000 (15)	0.0027 (18)	-0.0024 (18)

C3	0.0169 (19)	0.0130 (19)	0.023 (2)	0.0054 (15)	0.0042 (18)	-0.0031 (18)
C4	0.020 (2)	0.0132 (19)	0.021 (2)	0.0056 (15)	0.0000 (19)	0.0011 (19)
C5	0.025 (2)	0.0156 (19)	0.019 (2)	0.0070 (17)	0.0032 (19)	-0.0046 (18)
C6	0.035 (3)	0.022 (2)	0.023 (2)	0.0087 (19)	-0.003 (2)	-0.005 (2)
C7	0.044 (3)	0.024 (2)	0.031 (3)	0.014 (2)	-0.013 (2)	-0.004 (2)
C8	0.062 (4)	0.027 (2)	0.018 (2)	0.022 (2)	-0.006 (2)	-0.002 (2)
C9	0.049 (3)	0.020 (2)	0.026 (2)	0.012 (2)	0.006 (2)	0.004 (2)
C10	0.031 (2)	0.017 (2)	0.024 (2)	0.0049 (17)	0.005 (2)	-0.002 (2)
C11	0.023 (2)	0.0137 (18)	0.025 (3)	0.0005 (17)	0.0012 (19)	-0.0021 (19)
C12	0.022 (2)	0.022 (2)	0.028 (3)	-0.0003 (18)	0.003 (2)	0.000 (2)
C13	0.024 (2)	0.016 (2)	0.025 (2)	-0.0008 (17)	-0.001 (2)	-0.0008 (19)
C14	0.023 (2)	0.0082 (17)	0.025 (2)	0.0013 (15)	0.003 (2)	0.0068 (18)
C15	0.024 (2)	0.015 (2)	0.025 (2)	-0.0018 (17)	-0.004 (2)	-0.0004 (19)
C16	0.034 (3)	0.0121 (19)	0.028 (2)	0.0022 (18)	0.003 (2)	-0.0026 (19)

Geometric parameters (Å, °)

O1—C4	1.236 (5)	C6—C7	1.389 (7)
N1—C1	1.309 (5)	C6—H6	0.9500
N1—N3	1.389 (5)	C7—C8	1.394 (8)
N2—C2	1.308 (6)	C7—H7	0.9500
N2—C1	1.386 (5)	C8—C9	1.384 (8)
N3—C3	1.370 (5)	C8—H8	0.9500
N3—C2	1.371 (5)	C9—C10	1.381 (7)
N4—C3	1.310 (5)	C9—H9	0.9500
N4—C4	1.380 (5)	C10—H10	0.9500
N5—C2	1.358 (5)	C11—C14	1.526 (6)
N5—C4	1.383 (6)	C11—H11A	0.9900
N5—H5N	0.90 (4)	C11—H11B	0.9900
N6—C3	1.328 (5)	C12—C13	1.392 (6)
N6—C11	1.441 (5)	C12—H12	0.9500
N6—H6N	0.95 (6)	C13—C14	1.387 (6)
N7—C16	1.332 (6)	C13—H13	0.9500
N7—C12	1.338 (6)	C14—C15	1.369 (7)
C1—C5	1.470 (6)	C15—C16	1.392 (6)
C5—C6	1.379 (6)	C15—H15	0.9500
C5—C10	1.415 (6)	C16—H16	0.9500
C1—N1—N3	101.5 (3)	C6—C7—H7	120.2
C2—N2—C1	101.8 (3)	C8—C7—H7	120.2
C3—N3—C2	121.9 (4)	C9—C8—C7	120.0 (5)
C3—N3—N1	128.4 (3)	C9—C8—H8	120.0
C2—N3—N1	108.7 (3)	C7—C8—H8	120.0
C3—N4—C4	119.6 (4)	C10—C9—C8	120.6 (5)
C2—N5—C4	120.9 (4)	C10—C9—H9	119.7
C2—N5—H5N	116 (3)	C8—C9—H9	119.7
C4—N5—H5N	120 (3)	C9—C10—C5	119.5 (4)
C3—N6—C11	122.5 (4)	C9—C10—H10	120.2

C3—N6—H6N	110 (3)	C5—C10—H10	120.2
C11—N6—H6N	123 (3)	N6—C11—C14	113.7 (4)
C16—N7—C12	117.7 (4)	N6—C11—H11A	108.8
N1—C1—N2	116.7 (4)	C14—C11—H11A	108.8
N1—C1—C5	122.3 (4)	N6—C11—H11B	108.8
N2—C1—C5	121.0 (4)	C14—C11—H11B	108.8
N2—C2—N5	132.0 (4)	H11A—C11—H11B	107.7
N2—C2—N3	111.3 (4)	N7—C12—C13	123.1 (4)
N5—C2—N3	116.7 (4)	N7—C12—H12	118.5
N4—C3—N6	123.9 (4)	C13—C12—H12	118.5
N4—C3—N3	120.3 (4)	C14—C13—C12	118.5 (4)
N6—C3—N3	115.9 (4)	C14—C13—H13	120.7
O1—C4—N4	122.6 (4)	C12—C13—H13	120.7
O1—C4—N5	117.7 (4)	C15—C14—C13	118.4 (4)
N4—C4—N5	119.7 (4)	C15—C14—C11	123.1 (4)
C6—C5—C10	119.5 (4)	C13—C14—C11	118.5 (4)
C6—C5—C1	120.5 (4)	C14—C15—C16	119.7 (4)
C10—C5—C1	120.0 (4)	C14—C15—H15	120.2
C5—C6—C7	120.8 (5)	C16—C15—H15	120.2
C5—C6—H6	119.6	N7—C16—C15	122.6 (4)
C7—C6—H6	119.6	N7—C16—H16	118.7
C6—C7—C8	119.6 (5)	C15—C16—H16	118.7
C1—N1—N3—C3	169.6 (4)	C2—N5—C4—N4	-2.1 (6)
C1—N1—N3—C2	0.9 (4)	N1—C1—C5—C6	-177.5 (4)
N3—N1—C1—N2	-0.4 (5)	N2—C1—C5—C6	2.2 (6)
N3—N1—C1—C5	179.3 (4)	N1—C1—C5—C10	-0.2 (6)
C2—N2—C1—N1	-0.2 (5)	N2—C1—C5—C10	179.5 (4)
C2—N2—C1—C5	-180.0 (4)	C10—C5—C6—C7	-0.3 (6)
C1—N2—C2—N5	-179.3 (4)	C1—C5—C6—C7	177.1 (4)
C1—N2—C2—N3	0.8 (4)	C5—C6—C7—C8	-0.4 (6)
C4—N5—C2—N2	177.7 (4)	C6—C7—C8—C9	1.3 (7)
C4—N5—C2—N3	-2.5 (6)	C7—C8—C9—C10	-1.4 (7)
C3—N3—C2—N2	-170.7 (3)	C8—C9—C10—C5	0.6 (7)
N1—N3—C2—N2	-1.1 (4)	C6—C5—C10—C9	0.2 (6)
C3—N3—C2—N5	9.4 (5)	C1—C5—C10—C9	-177.2 (4)
N1—N3—C2—N5	179.0 (3)	C3—N6—C11—C14	-118.5 (4)
C4—N4—C3—N6	-173.5 (4)	C16—N7—C12—C13	1.1 (6)
C4—N4—C3—N3	6.8 (5)	N7—C12—C13—C14	0.6 (7)
C11—N6—C3—N4	10.2 (6)	C12—C13—C14—C15	-2.0 (6)
C11—N6—C3—N3	-170.1 (3)	C12—C13—C14—C11	179.0 (4)
C2—N3—C3—N4	-11.9 (5)	N6—C11—C14—C15	10.2 (5)
N1—N3—C3—N4	-179.2 (4)	N6—C11—C14—C13	-170.8 (4)
C2—N3—C3—N6	168.4 (4)	C13—C14—C15—C16	1.6 (6)
N1—N3—C3—N6	1.0 (6)	C11—C14—C15—C16	-179.4 (4)
C3—N4—C4—O1	178.6 (4)	C12—N7—C16—C15	-1.5 (6)
C3—N4—C4—N5	0.0 (6)	C14—C15—C16—N7	0.1 (6)
C2—N5—C4—O1	179.1 (4)		

Hydrogen-bond geometry (Å, °)

<i>D</i> —H \cdots <i>A</i>	<i>D</i> —H	H \cdots <i>A</i>	<i>D</i> \cdots <i>A</i>	<i>D</i> —H \cdots <i>A</i>
N5—H5N \cdots N7 ⁱ	0.90 (4)	1.89 (4)	2.782 (5)	173 (4)
N6—H6N \cdots O1 ⁱⁱ	0.95 (6)	1.96 (5)	2.735 (5)	137 (4)
N6—H6N \cdots N1	0.95 (6)	2.31 (5)	2.813 (5)	112 (4)

Symmetry codes: (i) $x+1/2, -y+1/2, z$; (ii) $-x+3/2, y-1/2, z+1/2$.