

Acta Crystallographica Section E

Structure Reports

Online

ISSN 1600-5368

(Z)-3-Chloromethylidene-5,6-dimethoxy-2-methyl-2,3-dihydro-1,2-benzothiazole 1,1-dioxide

Jatinder P. Bassin,^{a*} Virender P. Shah,^a Lee Martin,^a
William Clegg^b and Ross W. Harrington^b

^aSchool of Pharmacy, University of Hertfordshire, College Lane, Hatfield AL10 9AB, England, and ^bSchool of Chemistry, Newcastle University, Newcastle upon Tyne NE1 7RU, England

Correspondence e-mail: j.p.bassin@herts.ac.uk

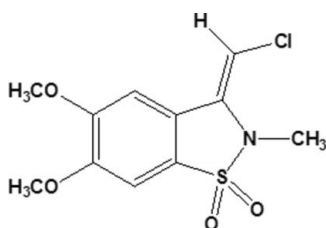
Received 17 November 2010; accepted 26 November 2010

Key indicators: single-crystal synchrotron study; $T = 120$ K; mean $\sigma(\text{C}-\text{C}) = 0.006$ Å; R factor = 0.065; wR factor = 0.177; data-to-parameter ratio = 13.4.

The title compound, $\text{C}_{11}\text{H}_{12}\text{ClNO}_4\text{S}$, adopts a *Z* configuration about the $\text{C}=\text{C}$ double bond. The benzisothiazole system is essentially planar [maximum deviation of 0.235 (2) Å for the S atom]. In the crystal, the molecules stack parallel to each other in the *b*-axis direction, with interplanar spacings for the benzene and thiazole rings ranging from 3.402 (2) to 3.702 (2) Å.

Related literature

3-Substituted 1,2-benzisothiazole-1,1-dioxides are an important class of heterocycles with a broad range of biological activity, see: Feit *et al.* (1973); Shutske *et al.* (1983); Bachman *et al.* (1978); Vicini *et al.* (2003); Sharmeen *et al.* (2001). Various synthetic routes have been developed for the synthesis of 1,2-benzisothiazole-1,1-dioxides, see: Chapman & Peart (1996). Carbonation of *ortho*-lithiated sulfonamides is the most common method for the preparation of substituted saccharins; however, this results in poor yields (Lombardino, 1971) and is limited by the availability of starting materials. A recent improved synthesis of 1,2-benzisothiazole-1,1-dioxides involved cyclization of *N*-acyl-benzenesulfonamides using LDA, see: Hermann *et al.* (1992).



Experimental

Crystal data

$\text{C}_{11}\text{H}_{12}\text{ClNO}_4\text{S}$	$\gamma = 84.176$ (11) $^\circ$
$M_r = 289.73$	$V = 594.7$ (7) Å ³
Triclinic, $P\bar{1}$	$Z = 2$
$a = 7.578$ (5) Å	Synchrotron radiation
$b = 7.904$ (6) Å	$\lambda = 0.6937$ Å
$c = 10.002$ (7) Å	$\mu = 0.50$ mm ⁻¹
$\alpha = 88.875$ (11) $^\circ$	$T = 120$ K
$\beta = 86.293$ (10) $^\circ$	$0.20 \times 0.04 \times 0.01$ mm

Data collection

Bruker APEXII CCD diffractometer	4651 measured reflections
Absorption correction: multi-scan (SADABS; Sheldrick, 2002)	2237 independent reflections
$T_{\min} = 0.905$, $T_{\max} = 0.990$	1671 reflections with $I > 2\sigma(I)$
	$R_{\text{int}} = 0.038$

Refinement

$R[F^2 > 2\sigma(F^2)] = 0.065$	167 parameters
$wR(F^2) = 0.177$	H-atom parameters constrained
$S = 1.02$	$\Delta\rho_{\text{max}} = 1.29$ e Å ⁻³
2237 reflections	$\Delta\rho_{\text{min}} = -0.43$ e Å ⁻³

Data collection: APEX2 (Bruker, 2004); cell refinement: SAINT (Bruker, 2004); data reduction: SAINT; program(s) used to solve structure: SHELXTL (Sheldrick, 2008); program(s) used to refine structure: SHELXTL; molecular graphics: SHELXTL; software used to prepare material for publication: SHELXTL and local programs.

We thank the EPSRC for funding the National Crystallography Service, and STFC (formerly CCLRC) for access to synchrotron facilities.

Supplementary data and figures for this paper are available from the IUCr electronic archives (Reference: JH2234).

References

- Bachman, G. L. J. C., Baker, J. W. & Roman, D. P. (1978). *J. Pharm. Sci.* **67**, 1323–1325.
- Bruker (2004). APEX2 and SAINT. Bruker AXS Inc., Madison, Wisconsin, USA.
- Chapman, R. F. & Peart, B. J. (1996). In *Comprehensive Heterocyclic Chemistry*, edited by A. R. Katritzky, C. W. Rees, E. F. Scriven & I. Shinkai. Oxford: Pergamon Press.
- Feit, P. W., Ole, B., Nielsen, T. & Anderson, N. R. (1973). *J. Med. Chem.* **16**, 127–130.
- Hermann, C. K. F., Campbell, J. A., Greenwood, T. D., Lewis, J. A. & Wolfe, J. F. (1992). *J. Org. Chem.* **57**, 5328–5334.
- Lombardino, J. G. (1971). *J. Org. Chem.* **36**, 1843–1845.
- Sharmeen, L., McQuade, T., Heldsinger, A., Gogliotti, R., Domagala, J. & Gracheck, S. (2001). *Antiviral Res.* **49**, 101–104.
- Sheldrick, G. M. (2002). SADABS. University of Göttingen, Germany.
- Sheldrick, G. M. (2008). *Acta Cryst.* **A64**, 112–122.
- Shutske, G. M., Allen, R. C., Foersch, M. F., Setescak, L. L. & Wilker, J. C. (1983). *J. Med. Chem.* **26**, 1307–1311.
- Vicini, P., Geronikaki, A., Incerti, M., Busonera, B., Poni, G., Alba Cabras, C. & La Colla, P. (2003). *Bioorg. Med. Chem.* **11**, 4785–4789.

supporting information

Acta Cryst. (2011). E67, o12 [https://doi.org/10.1107/S1600536810049561]

(Z)-3-Chloromethylidene-5,6-dimethoxy-2-methyl-2,3-dihydro-1,2-benzothiazole 1,1-dioxide

Jatinder P. Bassin, Virender P. Shah, Lee Martin, William Clegg and Ross W. Harrington

S1. Experimental

The title compound was synthesized by reacting 2-(5,6-dimethoxy-2-methyl-1,1-dioxido-2,3-dihydrobenzo [*d*]isothiazol-3-yl)-1-phenylethanone (1 g; 2.77 mmol), dissolved in pyridine (10 ml), with sodium hypochlorite (10 ml). An exothermic reaction occurred and with time the solution became turbid. The reaction mixture was stirred for a total of 30 minutes and then poured onto crushed ice. The resulting light yellow solid was filtered by suction filtration and air dried. It was re-crystallized from ethanol to afford a creamy white solid which was re-crystallized a second time to give 1 as a colourless crystalline product [yield: 87%, m.p.: 457 K].

S2. Refinement

H atoms were constrained with a riding model, having C—H = 0.95–0.98 Å and $U_{\text{iso}}(\text{H}) = 1.5U_{\text{eq}}(\text{H})$ for methyl groups and $1.2U_{\text{eq}}(\text{C})$ for other atoms. The largest residual electron density peak lies 1.81 Å from C11 and 1.04 Å from C3, but has no structural chemical significance.

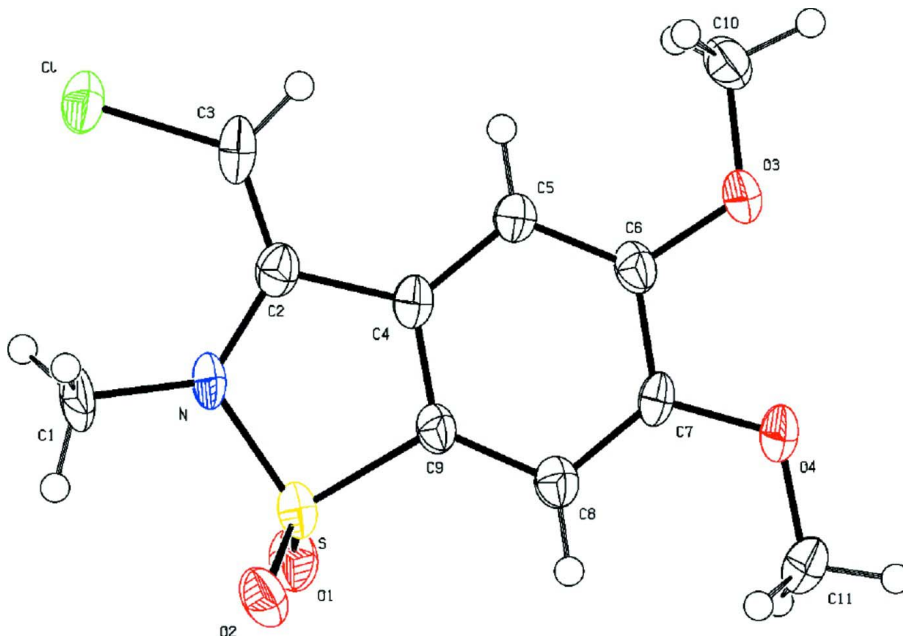


Figure 1
Ellipsoid plot.

(Z)-3-Chloromethylidene-5,6-dimethoxy-2-methyl-2,3-dihydro-1,2-benzothiazole 1,1-dioxide*Crystal data*C₁₁H₁₂ClNO₄S $M_r = 289.73$ Triclinic, $P\bar{1}$

Hall symbol: -P 1

 $a = 7.578$ (5) Å $b = 7.904$ (6) Å $c = 10.002$ (7) Å $\alpha = 88.875$ (11)° $\beta = 86.293$ (10)° $\gamma = 84.176$ (11)° $V = 594.7$ (7) Å³ $Z = 2$ $F(000) = 300$ $D_x = 1.618$ Mg m⁻³Synchrotron radiation, $\lambda = 0.6937$ Å

Cell parameters from 974 reflections

 $\theta = 2.6$ – 24.5 ° $\mu = 0.50$ mm⁻¹ $T = 120$ K

Needle, colourless

 $0.20 \times 0.04 \times 0.01$ mm*Data collection*

Bruker APEXII CCD

diffractometer

Radiation source: Daresbury SRS station 9.8

Silicon 111 monochromator

thin-slice ω scans

Absorption correction: multi-scan

(SADABS; Sheldrick, 2002)

 $T_{\min} = 0.905$, $T_{\max} = 0.990$

4651 measured reflections

2237 independent reflections

1671 reflections with $I > 2\sigma(I)$ $R_{\text{int}} = 0.038$ $\theta_{\text{max}} = 25.0$ °, $\theta_{\text{min}} = 2.0$ ° $h = -9 \rightarrow 9$ $k = -9 \rightarrow 9$ $l = -12 \rightarrow 12$ *Refinement*Refinement on F^2

Least-squares matrix: full

 $R[F^2 > 2\sigma(F^2)] = 0.065$ $wR(F^2) = 0.177$ $S = 1.02$

2237 reflections

167 parameters

0 restraints

Primary atom site location: structure-invariant

direct methods

Secondary atom site location: difference Fourier

map

Hydrogen site location: inferred from
neighbouring sites

H-atom parameters constrained

 $w = 1/[\sigma^2(F_o^2) + (0.0319P)^2 + 1.6618P]$ where $P = (F_o^2 + 2F_c^2)/3$ $(\Delta/\sigma)_{\text{max}} < 0.001$ $\Delta\rho_{\text{max}} = 1.29$ e Å⁻³ $\Delta\rho_{\text{min}} = -0.43$ e Å⁻³Extinction correction: *SHELXTL* (Sheldrick,
2008), $F_c^* = kF_c[1 + 0.001x F_c^2 \lambda^3 / \sin(2\theta)]^{-1/4}$

Extinction coefficient: 0.084 (15)

Special details

Geometry. All e.s.d.'s (except the e.s.d. in the dihedral angle between two l.s. planes) are estimated using the full covariance matrix. The cell e.s.d.'s are taken into account individually in the estimation of e.s.d.'s in distances, angles and torsion angles; correlations between e.s.d.'s in cell parameters are only used when they are defined by crystal symmetry. An approximate (isotropic) treatment of cell e.s.d.'s is used for estimating e.s.d.'s involving l.s. planes.

Refinement. Refinement of F^2 against ALL reflections. The weighted R -factor wR and goodness of fit S are based on F^2 , conventional R -factors R are based on F , with F set to zero for negative F^2 . The threshold expression of $F^2 > \sigma(F^2)$ is used only for calculating R -factors(gt) *etc.* and is not relevant to the choice of reflections for refinement. R -factors based on F^2 are statistically about twice as large as those based on F , and R -factors based on ALL data will be even larger.

Fractional atomic coordinates and isotropic or equivalent isotropic displacement parameters (Å²)

	x	y	z	$U_{\text{iso}}^*/U_{\text{eq}}$
S1	0.20714 (16)	0.29186 (15)	0.38990 (10)	0.0286 (4)
Cl1	0.72928 (18)	0.01424 (17)	0.14119 (11)	0.0402 (4)

N1	0.3721 (5)	0.2029 (5)	0.2891 (3)	0.0315 (9)
C1	0.3515 (8)	0.2190 (8)	0.1449 (4)	0.0441 (14)
H1A	0.4303	0.3002	0.1058	0.066*
H1B	0.2279	0.2595	0.1290	0.066*
H1C	0.3823	0.1079	0.1031	0.066*
C2	0.5330 (6)	0.1725 (6)	0.3483 (4)	0.0277 (10)
C3	0.6901 (7)	0.0988 (6)	0.2982 (4)	0.0353 (12)
H3	0.7873	0.0931	0.3541	0.042*
C4	0.5098 (6)	0.2358 (5)	0.4871 (4)	0.0255 (10)
C5	0.6343 (6)	0.2194 (6)	0.5848 (4)	0.0270 (10)
H5	0.7509	0.1660	0.5653	0.032*
C6	0.5834 (6)	0.2829 (6)	0.7102 (4)	0.0268 (10)
C7	0.4134 (6)	0.3697 (6)	0.7387 (4)	0.0255 (10)
C8	0.2894 (6)	0.3844 (6)	0.6435 (4)	0.0271 (10)
H8	0.1733	0.4400	0.6615	0.033*
C9	0.3435 (6)	0.3132 (6)	0.5189 (4)	0.0250 (10)
C10	0.8610 (6)	0.1808 (6)	0.7939 (5)	0.0328 (11)
H10A	0.8510	0.0663	0.7612	0.049*
H10B	0.9205	0.1726	0.8782	0.049*
H10C	0.9306	0.2431	0.7271	0.049*
C11	0.2152 (7)	0.5175 (7)	0.8980 (5)	0.0354 (11)
H11A	0.1882	0.6091	0.8329	0.053*
H11B	0.2138	0.5654	0.9878	0.053*
H11C	0.1258	0.4362	0.8971	0.053*
O1	0.0829 (5)	0.1725 (4)	0.4255 (3)	0.0371 (8)
O2	0.1341 (5)	0.4480 (4)	0.3321 (3)	0.0358 (8)
O3	0.6882 (4)	0.2685 (4)	0.8156 (3)	0.0316 (8)
O4	0.3860 (4)	0.4328 (4)	0.8638 (3)	0.0320 (8)

Atomic displacement parameters (Å²)

	U^{11}	U^{22}	U^{33}	U^{12}	U^{13}	U^{23}
S1	0.0357 (7)	0.0326 (7)	0.0185 (6)	-0.0065 (5)	-0.0058 (5)	0.0001 (4)
C11	0.0493 (8)	0.0498 (8)	0.0204 (6)	0.0003 (6)	-0.0013 (5)	-0.0052 (5)
N1	0.039 (2)	0.043 (2)	0.0123 (17)	-0.0009 (18)	-0.0043 (16)	-0.0005 (16)
C1	0.052 (3)	0.068 (4)	0.012 (2)	-0.006 (3)	-0.008 (2)	0.002 (2)
C2	0.036 (3)	0.027 (2)	0.020 (2)	-0.003 (2)	0.0002 (18)	0.0020 (18)
C3	0.054 (3)	0.036 (3)	0.017 (2)	-0.010 (2)	-0.003 (2)	-0.0034 (19)
C4	0.033 (2)	0.026 (2)	0.018 (2)	-0.0053 (19)	-0.0008 (18)	-0.0002 (17)
C5	0.028 (2)	0.032 (2)	0.020 (2)	-0.0014 (19)	-0.0004 (18)	0.0004 (18)
C6	0.029 (2)	0.034 (2)	0.019 (2)	-0.0067 (19)	-0.0039 (17)	0.0038 (18)
C7	0.034 (2)	0.029 (2)	0.0132 (19)	-0.0050 (19)	0.0020 (17)	-0.0001 (16)
C8	0.030 (2)	0.030 (2)	0.022 (2)	-0.0059 (19)	-0.0021 (18)	0.0008 (18)
C9	0.029 (2)	0.029 (2)	0.017 (2)	-0.0033 (19)	-0.0032 (17)	0.0023 (17)
C10	0.034 (3)	0.036 (3)	0.029 (2)	-0.001 (2)	-0.011 (2)	0.001 (2)
C11	0.039 (3)	0.042 (3)	0.024 (2)	-0.002 (2)	0.005 (2)	-0.006 (2)
O1	0.041 (2)	0.042 (2)	0.0306 (18)	-0.0136 (16)	-0.0048 (15)	-0.0041 (15)
O2	0.044 (2)	0.0359 (19)	0.0287 (17)	-0.0017 (15)	-0.0140 (15)	0.0039 (14)

O3	0.0333 (18)	0.0432 (19)	0.0182 (15)	-0.0007 (15)	-0.0065 (13)	-0.0009 (13)
O4	0.0385 (19)	0.0414 (19)	0.0159 (15)	-0.0035 (15)	-0.0008 (13)	-0.0020 (13)

Geometric parameters (Å, °)

S1—N1	1.661 (4)	C5—C6	1.377 (6)
S1—C9	1.725 (4)	C6—C7	1.411 (7)
S1—O1	1.424 (4)	C6—O3	1.357 (5)
S1—O2	1.427 (3)	C7—C8	1.376 (6)
C11—C3	1.715 (5)	C7—O4	1.352 (5)
N1—C1	1.463 (5)	C8—H8	0.950
N1—C2	1.387 (6)	C8—C9	1.398 (6)
C1—H1A	0.980	C10—H10A	0.980
C1—H1B	0.980	C10—H10B	0.980
C1—H1C	0.980	C10—H10C	0.980
C2—C3	1.342 (7)	C10—O3	1.424 (6)
C2—C4	1.478 (6)	C11—H11A	0.980
C3—H3	0.950	C11—H11B	0.980
C4—C5	1.397 (6)	C11—H11C	0.980
C4—C9	1.365 (6)	C11—O4	1.420 (6)
C5—H5	0.950		
N1—S1—C9	93.3 (2)	C5—C6—C7	121.5 (4)
N1—S1—O1	110.3 (2)	C5—C6—O3	124.1 (4)
N1—S1—O2	109.9 (2)	C7—C6—O3	114.4 (4)
C9—S1—O1	110.6 (2)	C6—C7—C8	120.6 (4)
C9—S1—O2	115.1 (2)	C6—C7—O4	114.7 (4)
O1—S1—O2	115.4 (2)	C8—C7—O4	124.7 (4)
S1—N1—C1	117.1 (3)	C7—C8—H8	121.8
S1—N1—C2	114.2 (3)	C7—C8—C9	116.3 (4)
C1—N1—C2	125.1 (4)	H8—C8—C9	121.8
N1—C1—H1A	109.5	S1—C9—C4	110.2 (3)
N1—C1—H1B	109.5	S1—C9—C8	125.5 (4)
N1—C1—H1C	109.5	C4—C9—C8	124.1 (4)
H1A—C1—H1B	109.5	H10A—C10—H10B	109.5
H1A—C1—H1C	109.5	H10A—C10—H10C	109.5
H1B—C1—H1C	109.5	H10A—C10—O3	109.5
N1—C2—C3	129.9 (4)	H10B—C10—H10C	109.5
N1—C2—C4	108.7 (4)	H10B—C10—O3	109.5
C3—C2—C4	121.4 (4)	H10C—C10—O3	109.5
C11—C3—C2	125.2 (4)	H11A—C11—H11B	109.5
C11—C3—H3	117.4	H11A—C11—H11C	109.5
C2—C3—H3	117.4	H11A—C11—O4	109.5
C2—C4—C5	127.5 (4)	H11B—C11—H11C	109.5
C2—C4—C9	113.3 (4)	H11B—C11—O4	109.5
C5—C4—C9	119.3 (4)	H11C—C11—O4	109.5
C4—C5—H5	120.9	C6—O3—C10	117.2 (4)
C4—C5—C6	118.2 (4)	C7—O4—C11	116.7 (4)

H5—C5—C6	120.9		
C9—S1—N1—C1	-155.2 (4)	C5—C6—C7—O4	-176.5 (4)
C9—S1—N1—C2	4.6 (4)	O3—C6—C7—C8	-176.0 (4)
O1—S1—N1—C1	91.4 (4)	O3—C6—C7—O4	3.6 (6)
O1—S1—N1—C2	-108.8 (3)	C6—C7—C8—C9	-1.5 (6)
O2—S1—N1—C1	-37.0 (4)	O4—C7—C8—C9	178.9 (4)
O2—S1—N1—C2	122.8 (3)	C2—C4—C9—S1	6.2 (5)
S1—N1—C2—C3	177.8 (4)	C2—C4—C9—C8	-179.5 (4)
S1—N1—C2—C4	-1.8 (5)	C5—C4—C9—S1	-171.9 (3)
C1—N1—C2—C3	-24.3 (8)	C5—C4—C9—C8	2.5 (7)
C1—N1—C2—C4	156.1 (5)	C7—C8—C9—S1	171.8 (3)
N1—C2—C3—C11	-2.1 (7)	C7—C8—C9—C4	-1.6 (7)
C4—C2—C3—C11	177.5 (3)	N1—S1—C9—C4	-6.2 (3)
N1—C2—C4—C5	174.9 (4)	N1—S1—C9—C8	179.6 (4)
N1—C2—C4—C9	-2.9 (5)	O1—S1—C9—C4	107.0 (3)
C3—C2—C4—C5	-4.8 (7)	O1—S1—C9—C8	-67.3 (4)
C3—C2—C4—C9	177.4 (4)	O2—S1—C9—C4	-120.0 (3)
C2—C4—C5—C6	-177.8 (4)	O2—S1—C9—C8	65.8 (4)
C9—C4—C5—C6	0.0 (6)	C5—C6—O3—C10	-0.5 (6)
C4—C5—C6—C7	-3.1 (7)	C7—C6—O3—C10	179.4 (4)
C4—C5—C6—O3	176.8 (4)	C6—C7—O4—C11	-178.5 (4)
C5—C6—C7—C8	3.9 (7)	C8—C7—O4—C11	1.1 (6)
