

Acta Crystallographica Section E

## Structure Reports

Online

ISSN 1600-5368

## 2-(4-Methylphenyl)-1-phenylsulfonyl-3-nitro-1,2-dihydroquinoline

 J. Kanchanadevi,<sup>a</sup> G. Anbalagan,<sup>b</sup> V. Saravanan,<sup>c</sup>  
 A. K. Mohanakrishnan<sup>c</sup> and V. Manivannan<sup>d\*</sup>

<sup>a</sup>Department of Physics, Velammal Institute of Technology, Panchetty, Chennai 601 204, India, <sup>b</sup>Department of Physics, Presidency College (Autonomous), Chennai 600 005, India, <sup>c</sup>Department of Organic Chemistry, University of Madras, Guindy campus, Chennai 600 025, India, and <sup>d</sup>Department of Research and Development, PRIST University, Vallam, Thanjavur - 613 403, Tamil Nadu, India  
 Correspondence e-mail: crystallography2010@gmail.com, phdguna@gmail.com

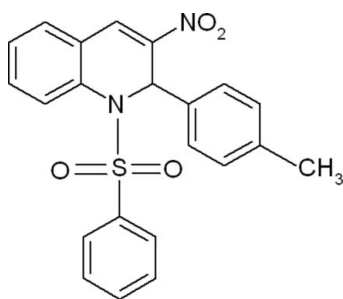
Received 25 July 2011; accepted 28 July 2011

Key indicators: single-crystal X-ray study;  $T = 295$  K; mean  $\sigma(\text{C}-\text{C}) = 0.003$  Å;  $R$  factor = 0.048;  $wR$  factor = 0.151; data-to-parameter ratio = 20.9.

In the title compound,  $\text{C}_{22}\text{H}_{18}\text{N}_2\text{O}_4\text{S}$ , the dihedral angle between the phenylsulfonyl ring and the methylphenyl ring is  $67.78(7)^\circ$ . In the crystal, molecules are linked by weak intermolecular  $\text{C}-\text{H}\cdots\text{O}$  interactions into a zigzag chain along the  $[101]$  direction.

### Related literature

For the biological activity of quinoline derivatives, see: Franck *et al.* (2004); Zouhiri *et al.* (2005); Paul *et al.* (1969). For a related structure, see: Xu *et al.* (2011).



### Experimental

#### Crystal data

 $\text{C}_{22}\text{H}_{18}\text{N}_2\text{O}_4\text{S}$ 
 $M_r = 406.44$ 

Monoclinic,  $P2_1/n$   
 $a = 9.7349(5)$  Å  
 $b = 17.0241(9)$  Å  
 $c = 12.1068(6)$  Å  
 $\beta = 90.240(2)^\circ$   
 $V = 2006.42(18)$  Å<sup>3</sup>

$Z = 4$   
 Mo  $K\alpha$  radiation  
 $\mu = 0.19$  mm<sup>-1</sup>  
 $T = 295$  K  
 $0.35 \times 0.30 \times 0.25$  mm

#### Data collection

Bruker Kappa APEXII CCD diffractometer  
 Absorption correction: multi-scan (*SADABS*; Sheldrick, 1996)  
 $T_{\min} = 0.945$ ,  $T_{\max} = 0.955$

26473 measured reflections  
 5485 independent reflections  
 3224 reflections with  $I > 2\sigma(I)$   
 $R_{\text{int}} = 0.028$

#### Refinement

$R[F^2 > 2\sigma(F^2)] = 0.048$   
 $wR(F^2) = 0.151$   
 $S = 1.03$   
 5485 reflections

263 parameters  
 H-atom parameters constrained  
 $\Delta\rho_{\text{max}} = 0.21$  e Å<sup>-3</sup>  
 $\Delta\rho_{\text{min}} = -0.23$  e Å<sup>-3</sup>

**Table 1**

Hydrogen-bond geometry (Å, °).

$D-H\cdots A$	$D-H$	$H\cdots A$	$D\cdots A$	$D-H\cdots A$
$\text{C4}-\text{H4}\cdots\text{O4}^i$	0.93	2.60	3.418 (4)	148

 Symmetry code: (i)  $x - \frac{1}{2}, -y + \frac{1}{2}, z - \frac{1}{2}$ .

Data collection: *APEX2* (Bruker, 2003); cell refinement: *SAINTE* (Bruker, 2003); data reduction: *SAINTE*; program(s) used to solve structure: *SHELXS97* (Sheldrick, 2008); program(s) used to refine structure: *SHELXL97* (Sheldrick, 2008); molecular graphics: *PLATON* (Spek, 2009); software used to prepare material for publication: *SHELXL97*.

Supplementary data and figures for this paper are available from the IUCr electronic archives (Reference: IS2758).

### References

- Bruker (2003). *APEX2* and *SAINTE*. Bruker AXS Inc., Madison, Wisconsin, USA.
- Franck, X., Fournet, A., Prina, E., Mahieux, R., Hocquemiller, R. & Figadere, B. (2004). *Bioorg. Med. Chem. Lett.* **14**, 3635–3638.
- Paul, J. S., Reynolds, R. C. & Montgomery, P. O'B. (1969). *Cancer Res.* **29**, 558–570.
- Sheldrick, G. M. (1996). *SADABS*. University of Göttingen, Germany.
- Sheldrick, G. M. (2008). *Acta Cryst.* **A64**, 112–122.
- Spek, A. L. (2009). *Acta Cryst.* **D65**, 148–155.
- Xu, L., Xu, B.-L., Lu, S.-J., Wang, B. & Kang, T.-G. (2011). *Acta Cryst.* **E67**, o957.
- Zouhiri, F., Danet, M., Benard, C., Normand-Bayle, M., Mouscadet, J. F., Leh, H., Thomas, C. M., Mbemba, G., D'Angelo, J. & Desmaele, D. (2005). *Tetrahedron Lett.* **46**, 2201–2205.

## supporting information

*Acta Cryst.* (2011). E67, o2225 [doi:10.1107/S1600536811030455]

**2-(4-Methylphenyl)-1-phenylsulfonyl-3-nitro-1,2-dihydroquinoline**

**J. Kanchanadevi, G. Anbalagan, V. Saravanan, A. K. Mohanakrishnan and V. Manivannan**

**S1. Comment**

The quinoline and its derivatives have received much scientific attention during recent years, because of their wide spectrum of pharmacological activities (Franck *et al.*, 2004; Zouhiri *et al.*, 2005). In addition, the nitroquinoline derivatives possess a potent mutagenic, carcinogenic and carcinostatic agent (Paul *et al.*, 1969).

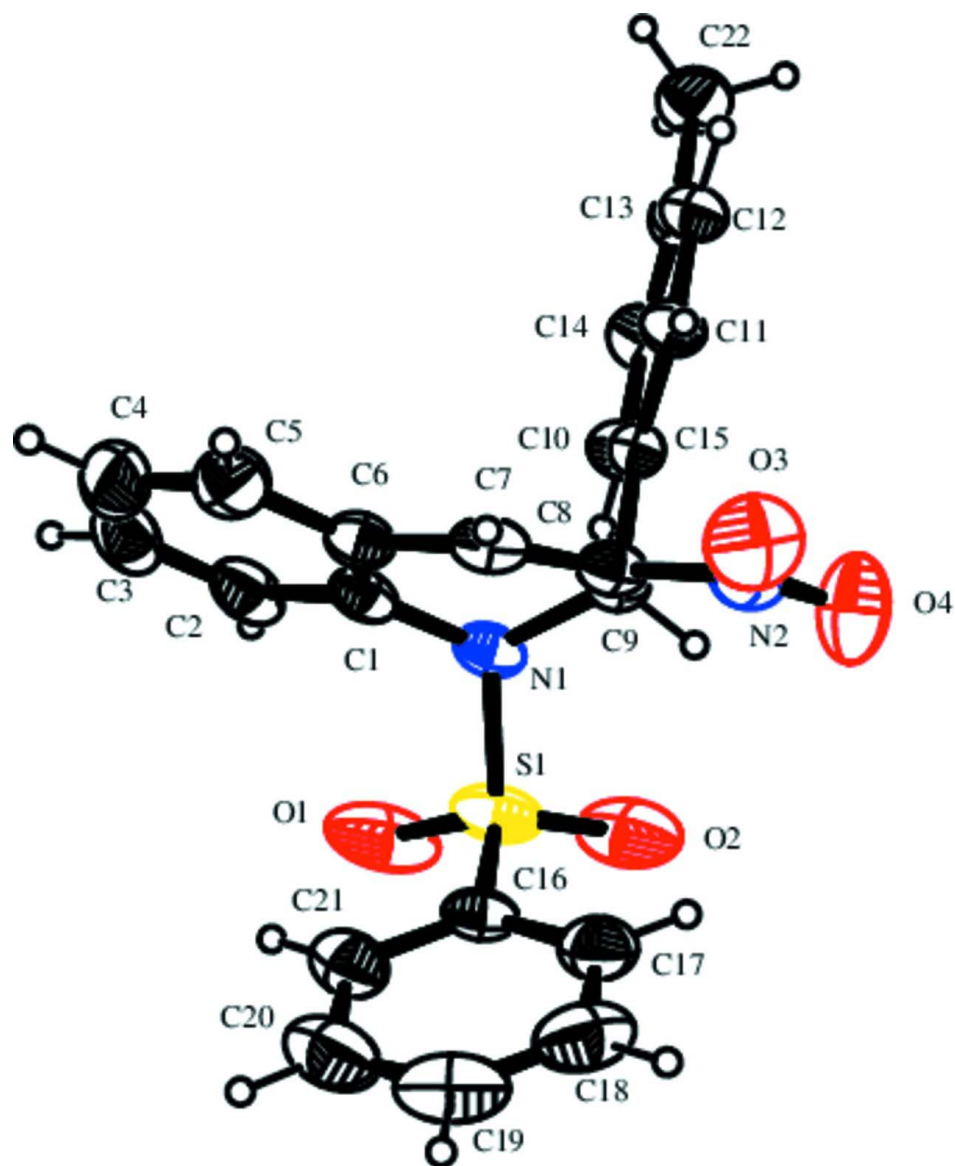
The geometric parameters of the title molecule (Fig. 1) agree well with a reported similar structure (Xu *et al.*, 2011). The phenylsulfonyl ring and the methylphenyl ring are oriented at an angle of  $67.78(7)^\circ$ . The sum of bond angles around N1 [ $352.34(13)^\circ$ ] and N2 [ $359.95(2)^\circ$ ] indicates the  $sp^2$  hybridization state of atoms N1 and N2 in the molecule. The crystal packing is controlled by a weak intermolecular C—H $\cdots$ O interaction.

**S2. Experimental**

To a solution of N-(2-formylphenyl) benzenesulfonamide (0.50 g, 1.91 mmol) in dry benzene (20 ml), DABACO (0.10 g, 0.95 mmol) and 1-methyl-4-(2-nitrovinyl)benzene (0.41 g, 2.29 mmol) were added. The reaction mixture was stirred at reflux condition for 24 hrs under  $N_2$  atmosphere. The reaction mass was quenched with ice water (50 ml), extracted with chloroform ( $3 \times 10$  ml) and dried ( $Na_2SO_4$ ). The solvent was removed under reduced pressure. Then the column chromatographic purification of crude product afforded pure dihydro nitroquinoline 18 as pale yellow solid with a yield of 82% and a melting point of 451 K.

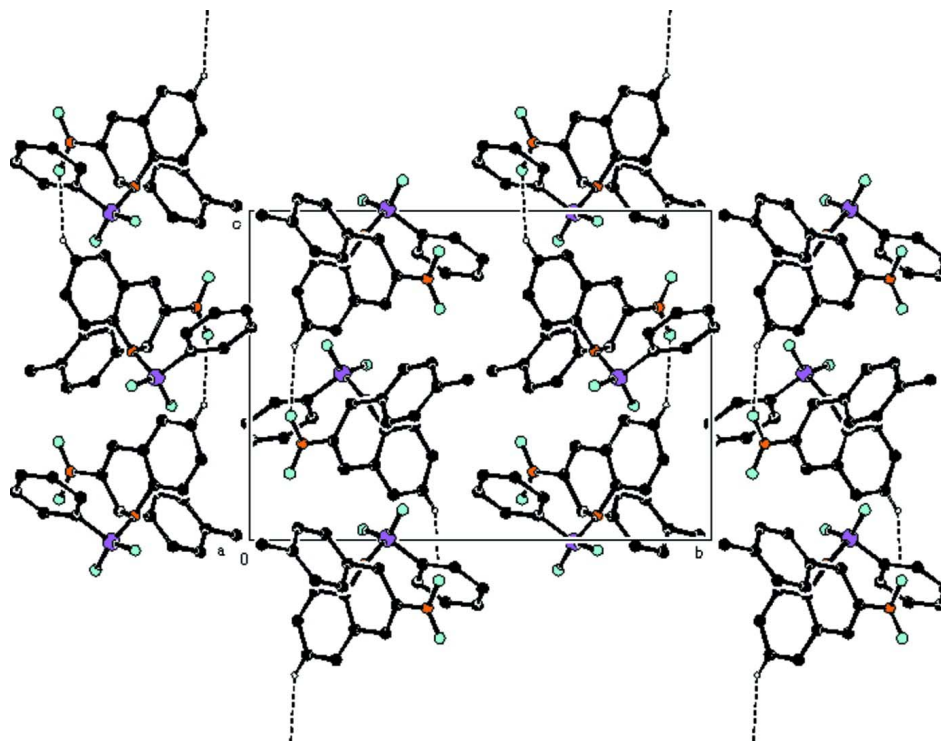
**S3. Refinement**

H atoms were positioned geometrically and refined using riding model with C—H = 0.93 Å and  $U_{iso}(H) = 1.2U_{eq}(C)$  for aromatic C—H, C—H = 0.98 Å and  $U_{iso}(H) = 1.2U_{eq}(C)$  for C—H, C—H = 0.96 Å and  $U_{iso}(H) = 1.5U_{eq}(C)$  for  $CH_3$ .



**Figure 1**

The molecular structure of the title compound, with atom labels and 30% probability displacement ellipsoids for non-H atoms.

**Figure 2**

The packing of the title compound, viewed down the *a* axis. The C—H...O hydrogen bonds are shown as dashed lines.

### 2-(4-Methylphenyl)-1-phenylsulfonyl-3-nitro-1,2-dihydroquinoline

#### Crystal data

$C_{22}H_{18}N_2O_4S$

$M_r = 406.44$

Monoclinic,  $P2_1/n$

Hall symbol:  $-P\ 2_1n$

$a = 9.7349\ (5)\ \text{\AA}$

$b = 17.0241\ (9)\ \text{\AA}$

$c = 12.1068\ (6)\ \text{\AA}$

$\beta = 90.240\ (2)^\circ$

$V = 2006.42\ (18)\ \text{\AA}^3$

$Z = 4$

$F(000) = 848$

$D_x = 1.346\ \text{Mg m}^{-3}$

Mo  $K\alpha$  radiation,  $\lambda = 0.71073\ \text{\AA}$

Cell parameters from 5485 reflections

$\theta = 2.1\text{--}29.4^\circ$

$\mu = 0.19\ \text{mm}^{-1}$

$T = 295\ \text{K}$

Block, pale yellow

$0.35 \times 0.30 \times 0.25\ \text{mm}$

#### Data collection

Bruker Kappa APEXII CCD  
diffractometer

Radiation source: fine-focus sealed tube

Graphite monochromator

Detector resolution: 0 pixels  $\text{mm}^{-1}$

$\omega$  and  $\phi$  scans

Absorption correction: multi-scan  
(*SADABS*; Sheldrick, 1996)

$T_{\min} = 0.945$ ,  $T_{\max} = 0.955$

26473 measured reflections

5485 independent reflections

3224 reflections with  $I > 2\sigma(I)$

$R_{\text{int}} = 0.028$

$\theta_{\max} = 29.3^\circ$ ,  $\theta_{\min} = 2.1^\circ$

$h = -13 \rightarrow 7$

$k = -23 \rightarrow 23$

$l = -14 \rightarrow 16$

*Refinement*Refinement on  $F^2$ 

Least-squares matrix: full

 $R[F^2 > 2\sigma(F^2)] = 0.048$  $wR(F^2) = 0.151$  $S = 1.03$ 

5485 reflections

263 parameters

0 restraints

Primary atom site location: structure-invariant  
direct methodsSecondary atom site location: difference Fourier  
mapHydrogen site location: inferred from  
neighbouring sites

H-atom parameters constrained

 $w = 1/[\sigma^2(F_o^2) + (0.066P)^2 + 0.3469P]$ where  $P = (F_o^2 + 2F_c^2)/3$  $(\Delta/\sigma)_{\max} < 0.001$  $\Delta\rho_{\max} = 0.21 \text{ e } \text{\AA}^{-3}$  $\Delta\rho_{\min} = -0.23 \text{ e } \text{\AA}^{-3}$ *Fractional atomic coordinates and isotropic or equivalent isotropic displacement parameters ( $\text{\AA}^2$ )*

	<i>x</i>	<i>y</i>	<i>z</i>	$U_{\text{iso}}^*/U_{\text{eq}}$
C1	0.19131 (16)	0.20602 (10)	0.83358 (16)	0.0572 (4)
C2	0.1021 (2)	0.14330 (13)	0.8465 (2)	0.0782 (6)
H2	0.0747	0.1278	0.9168	0.094*
C3	0.0545 (2)	0.10423 (15)	0.7552 (3)	0.0984 (9)
H3	-0.0059	0.0624	0.7640	0.118*
C4	0.0945 (3)	0.12577 (17)	0.6509 (3)	0.1007 (9)
H4	0.0622	0.0981	0.5898	0.121*
C5	0.1819 (2)	0.18787 (15)	0.6368 (2)	0.0822 (6)
H5	0.2078	0.2028	0.5660	0.099*
C6	0.23211 (18)	0.22870 (11)	0.72767 (15)	0.0580 (4)
C7	0.32475 (19)	0.29435 (10)	0.71606 (15)	0.0583 (5)
H7	0.3352	0.3188	0.6479	0.070*
C8	0.39412 (17)	0.31926 (10)	0.80240 (15)	0.0551 (4)
C9	0.38459 (17)	0.27927 (10)	0.91304 (14)	0.0534 (4)
H9	0.4006	0.3186	0.9707	0.064*
C10	0.48831 (16)	0.21338 (10)	0.92830 (13)	0.0483 (4)
C11	0.59619 (17)	0.20168 (11)	0.85758 (14)	0.0562 (4)
H11	0.6054	0.2337	0.7958	0.067*
C12	0.69139 (18)	0.14296 (12)	0.87689 (16)	0.0639 (5)
H12	0.7646	0.1368	0.8285	0.077*
C13	0.68006 (18)	0.09341 (11)	0.96638 (15)	0.0588 (4)
C14	0.5720 (2)	0.10586 (12)	1.03651 (17)	0.0709 (5)
H14	0.5621	0.0734	1.0977	0.085*
C15	0.4780 (2)	0.16477 (12)	1.01928 (16)	0.0671 (5)
H15	0.4068	0.1720	1.0693	0.080*
C16	0.06971 (19)	0.37453 (12)	0.92595 (15)	0.0646 (5)
C17	0.1392 (2)	0.44441 (15)	0.9176 (2)	0.0860 (7)
H17	0.2226	0.4515	0.9540	0.103*
C18	0.0829 (4)	0.50453 (16)	0.8536 (3)	0.1066 (9)
H18	0.1291	0.5521	0.8465	0.128*
C19	-0.0370 (4)	0.4936 (2)	0.8029 (3)	0.1156 (11)
H19	-0.0737	0.5344	0.7610	0.139*
C20	-0.1077 (3)	0.4253 (2)	0.8102 (2)	0.1116 (10)
H20	-0.1919	0.4195	0.7746	0.134*

C21	-0.0529 (2)	0.36413 (16)	0.8715 (2)	0.0861 (7)
H21	-0.0988	0.3163	0.8757	0.103*
C22	0.7804 (2)	0.02762 (14)	0.9861 (2)	0.0873 (7)
H22A	0.8684	0.0491	1.0056	0.131*
H22B	0.7889	-0.0032	0.9201	0.131*
H22C	0.7480	-0.0050	1.0451	0.131*
N1	0.24454 (14)	0.24821 (9)	0.92602 (12)	0.0584 (4)
N2	0.48784 (19)	0.38510 (10)	0.79296 (19)	0.0773 (5)
O1	0.02787 (19)	0.24655 (12)	1.03159 (17)	0.1265 (8)
O2	0.2199 (2)	0.33166 (15)	1.09148 (12)	0.1231 (8)
O3	0.5112 (2)	0.41204 (10)	0.70211 (16)	0.1096 (6)
O4	0.5403 (2)	0.41024 (12)	0.8764 (2)	0.1219 (7)
S1	0.13716 (6)	0.29822 (4)	1.00593 (4)	0.0809 (2)

*Atomic displacement parameters (Å<sup>2</sup>)*

	$U^{11}$	$U^{22}$	$U^{33}$	$U^{12}$	$U^{13}$	$U^{23}$
C1	0.0441 (8)	0.0530 (10)	0.0747 (12)	0.0120 (7)	0.0062 (8)	0.0164 (9)
C2	0.0526 (10)	0.0659 (13)	0.1161 (18)	0.0055 (9)	0.0055 (11)	0.0266 (13)
C3	0.0614 (13)	0.0625 (14)	0.171 (3)	0.0024 (11)	-0.0212 (17)	0.0103 (18)
C4	0.0879 (17)	0.0826 (18)	0.131 (3)	0.0143 (14)	-0.0380 (17)	-0.0154 (17)
C5	0.0858 (15)	0.0804 (16)	0.0801 (15)	0.0196 (13)	-0.0177 (12)	-0.0004 (12)
C6	0.0548 (9)	0.0569 (10)	0.0622 (11)	0.0153 (8)	0.0004 (8)	0.0097 (9)
C7	0.0646 (10)	0.0564 (10)	0.0541 (10)	0.0179 (8)	0.0164 (8)	0.0176 (8)
C8	0.0548 (9)	0.0469 (9)	0.0638 (11)	0.0081 (7)	0.0159 (8)	0.0115 (8)
C9	0.0556 (9)	0.0530 (10)	0.0517 (9)	0.0065 (7)	0.0101 (7)	0.0039 (7)
C10	0.0486 (8)	0.0493 (9)	0.0469 (9)	0.0009 (7)	0.0006 (7)	0.0010 (7)
C11	0.0541 (9)	0.0612 (11)	0.0534 (10)	0.0070 (8)	0.0056 (7)	0.0073 (8)
C12	0.0552 (9)	0.0707 (12)	0.0658 (11)	0.0123 (9)	0.0033 (8)	0.0006 (10)
C13	0.0575 (10)	0.0541 (10)	0.0645 (11)	0.0066 (8)	-0.0135 (8)	-0.0024 (9)
C14	0.0784 (12)	0.0683 (13)	0.0661 (12)	0.0075 (10)	-0.0006 (10)	0.0229 (10)
C15	0.0688 (11)	0.0702 (12)	0.0623 (11)	0.0096 (9)	0.0140 (9)	0.0164 (9)
C16	0.0582 (10)	0.0726 (13)	0.0632 (11)	0.0162 (9)	0.0233 (9)	-0.0002 (9)
C17	0.0782 (13)	0.0806 (16)	0.0993 (17)	0.0089 (12)	0.0215 (12)	-0.0109 (13)
C18	0.128 (2)	0.0684 (16)	0.124 (2)	0.0191 (17)	0.041 (2)	0.0056 (16)
C19	0.134 (3)	0.112 (3)	0.100 (2)	0.055 (2)	0.030 (2)	0.0151 (19)
C20	0.0854 (17)	0.151 (3)	0.099 (2)	0.042 (2)	-0.0056 (15)	0.000 (2)
C21	0.0668 (13)	0.0997 (18)	0.0919 (16)	0.0098 (12)	0.0120 (12)	-0.0023 (14)
C22	0.0885 (15)	0.0745 (15)	0.0986 (16)	0.0267 (12)	-0.0167 (13)	0.0054 (12)
N1	0.0523 (7)	0.0649 (10)	0.0581 (9)	0.0116 (7)	0.0170 (6)	0.0135 (7)
N2	0.0770 (11)	0.0546 (10)	0.1004 (14)	0.0011 (8)	0.0181 (10)	0.0176 (10)
O1	0.1073 (12)	0.1217 (14)	0.1512 (17)	0.0298 (11)	0.0902 (12)	0.0615 (13)
O2	0.1292 (15)	0.192 (2)	0.0477 (8)	0.0691 (15)	0.0026 (9)	-0.0158 (11)
O3	0.1342 (15)	0.0769 (11)	0.1182 (14)	-0.0176 (10)	0.0390 (11)	0.0365 (10)
O4	0.1345 (16)	0.1048 (15)	0.1263 (16)	-0.0521 (13)	-0.0165 (13)	0.0139 (13)
S1	0.0799 (3)	0.1018 (5)	0.0615 (3)	0.0312 (3)	0.0356 (3)	0.0208 (3)

*Geometric parameters (Å, °)*

C1—C2	1.386 (3)	C13—C14	1.371 (3)
C1—C6	1.398 (2)	C13—C22	1.505 (3)
C1—N1	1.425 (2)	C14—C15	1.373 (3)
C2—C3	1.369 (4)	C14—H14	0.9300
C2—H2	0.9300	C15—H15	0.9300
C3—C4	1.373 (4)	C16—C17	1.373 (3)
C3—H3	0.9300	C16—C21	1.373 (3)
C4—C5	1.368 (4)	C16—S1	1.747 (2)
C4—H4	0.9300	C17—C18	1.394 (4)
C5—C6	1.389 (3)	C17—H17	0.9300
C5—H5	0.9300	C18—C19	1.330 (5)
C6—C7	1.443 (3)	C18—H18	0.9300
C7—C8	1.312 (3)	C19—C20	1.355 (5)
C7—H7	0.9300	C19—H19	0.9300
C8—N2	1.450 (3)	C20—C21	1.384 (4)
C8—C9	1.506 (2)	C20—H20	0.9300
C9—N1	1.471 (2)	C21—H21	0.9300
C9—C10	1.520 (2)	C22—H22A	0.9600
C9—H9	0.9800	C22—H22B	0.9600
C10—C11	1.372 (2)	C22—H22C	0.9600
C10—C15	1.382 (2)	N1—S1	1.6620 (14)
C11—C12	1.382 (2)	N2—O4	1.208 (2)
C11—H11	0.9300	N2—O3	1.214 (2)
C12—C13	1.378 (3)	O1—S1	1.4159 (19)
C12—H12	0.9300	O2—S1	1.428 (2)
C2—C1—C6	119.8 (2)	C13—C14—C15	122.10 (18)
C2—C1—N1	121.69 (19)	C13—C14—H14	119.0
C6—C1—N1	118.49 (16)	C15—C14—H14	119.0
C3—C2—C1	119.5 (2)	C14—C15—C10	120.53 (17)
C3—C2—H2	120.2	C14—C15—H15	119.7
C1—C2—H2	120.2	C10—C15—H15	119.7
C2—C3—C4	121.1 (2)	C17—C16—C21	120.3 (2)
C2—C3—H3	119.4	C17—C16—S1	120.10 (18)
C4—C3—H3	119.4	C21—C16—S1	119.64 (18)
C5—C4—C3	120.0 (3)	C16—C17—C18	119.0 (3)
C5—C4—H4	120.0	C16—C17—H17	120.5
C3—C4—H4	120.0	C18—C17—H17	120.5
C4—C5—C6	120.3 (3)	C19—C18—C17	119.8 (3)
C4—C5—H5	119.8	C19—C18—H18	120.1
C6—C5—H5	119.8	C17—C18—H18	120.1
C5—C6—C1	119.2 (2)	C18—C19—C20	122.3 (3)
C5—C6—C7	121.89 (19)	C18—C19—H19	118.8
C1—C6—C7	118.89 (18)	C20—C19—H19	118.8
C8—C7—C6	119.48 (16)	C19—C20—C21	119.1 (3)
C8—C7—H7	120.3	C19—C20—H20	120.5

C6—C7—H7	120.3	C21—C20—H20	120.5
C7—C8—N2	120.58 (17)	C16—C21—C20	119.5 (3)
C7—C8—C9	121.95 (16)	C16—C21—H21	120.2
N2—C8—C9	117.43 (18)	C20—C21—H21	120.2
N1—C9—C8	108.54 (14)	C13—C22—H22A	109.5
N1—C9—C10	109.71 (13)	C13—C22—H22B	109.5
C8—C9—C10	113.48 (13)	H22A—C22—H22B	109.5
N1—C9—H9	108.3	C13—C22—H22C	109.5
C8—C9—H9	108.3	H22A—C22—H22C	109.5
C10—C9—H9	108.3	H22B—C22—H22C	109.5
C11—C10—C15	117.95 (16)	C1—N1—C9	115.55 (13)
C11—C10—C9	122.75 (15)	C1—N1—S1	119.18 (11)
C15—C10—C9	119.24 (15)	C9—N1—S1	117.61 (13)
C10—C11—C12	120.91 (17)	O4—N2—O3	122.9 (2)
C10—C11—H11	119.5	O4—N2—C8	118.15 (19)
C12—C11—H11	119.5	O3—N2—C8	118.9 (2)
C13—C12—C11	121.32 (17)	O1—S1—O2	120.72 (13)
C13—C12—H12	119.3	O1—S1—N1	106.53 (10)
C11—C12—H12	119.3	O2—S1—N1	105.78 (9)
C14—C13—C12	117.16 (17)	O1—S1—C16	107.62 (11)
C14—C13—C22	121.08 (19)	O2—S1—C16	108.37 (12)
C12—C13—C22	121.75 (19)	N1—S1—C16	107.11 (8)
C6—C1—C2—C3	-0.1 (3)	C21—C16—C17—C18	0.4 (3)
N1—C1—C2—C3	-179.51 (17)	S1—C16—C17—C18	-179.70 (17)
C1—C2—C3—C4	0.5 (3)	C16—C17—C18—C19	0.6 (4)
C2—C3—C4—C5	-0.9 (4)	C17—C18—C19—C20	-0.4 (4)
C3—C4—C5—C6	0.9 (3)	C18—C19—C20—C21	-0.8 (5)
C4—C5—C6—C1	-0.6 (3)	C17—C16—C21—C20	-1.6 (3)
C4—C5—C6—C7	179.81 (19)	S1—C16—C21—C20	178.51 (18)
C2—C1—C6—C5	0.2 (3)	C19—C20—C21—C16	1.8 (4)
N1—C1—C6—C5	179.58 (15)	C2—C1—N1—C9	147.01 (16)
C2—C1—C6—C7	179.81 (15)	C6—C1—N1—C9	-32.4 (2)
N1—C1—C6—C7	-0.8 (2)	C2—C1—N1—S1	-64.2 (2)
C5—C6—C7—C8	-164.16 (17)	C6—C1—N1—S1	116.43 (15)
C1—C6—C7—C8	16.2 (2)	C8—C9—N1—C1	46.92 (18)
C6—C7—C8—N2	-179.99 (15)	C10—C9—N1—C1	-77.58 (17)
C6—C7—C8—C9	2.5 (2)	C8—C9—N1—S1	-102.38 (15)
C7—C8—C9—N1	-33.2 (2)	C10—C9—N1—S1	133.12 (12)
N2—C8—C9—N1	149.26 (15)	C7—C8—N2—O4	173.7 (2)
C7—C8—C9—C10	89.0 (2)	C9—C8—N2—O4	-8.7 (3)
N2—C8—C9—C10	-88.50 (19)	C7—C8—N2—O3	-7.0 (3)
N1—C9—C10—C11	133.39 (17)	C9—C8—N2—O3	170.59 (17)
C8—C9—C10—C11	11.8 (2)	C1—N1—S1—O1	48.87 (16)
N1—C9—C10—C15	-49.3 (2)	C9—N1—S1—O1	-162.97 (14)
C8—C9—C10—C15	-170.91 (17)	C1—N1—S1—O2	178.48 (15)
C15—C10—C11—C12	0.1 (3)	C9—N1—S1—O2	-33.35 (16)
C9—C10—C11—C12	177.40 (17)	C1—N1—S1—C16	-66.07 (15)



C10—C11—C12—C13	1.2 (3)	C9—N1—S1—C16	82.10 (14)
C11—C12—C13—C14	-1.3 (3)	C17—C16—S1—O1	159.82 (17)
C11—C12—C13—C22	177.92 (18)	C21—C16—S1—O1	-20.30 (19)
C12—C13—C14—C15	0.2 (3)	C17—C16—S1—O2	27.73 (18)
C22—C13—C14—C15	-179.0 (2)	C21—C16—S1—O2	-152.39 (16)
C13—C14—C15—C10	1.0 (3)	C17—C16—S1—N1	-85.98 (17)
C11—C10—C15—C14	-1.1 (3)	C21—C16—S1—N1	93.90 (16)
C9—C10—C15—C14	-178.56 (18)		

*Hydrogen-bond geometry (Å, °)*

<i>D</i> —H $\cdots$ <i>A</i>	<i>D</i> —H	H $\cdots$ <i>A</i>	<i>D</i> $\cdots$ <i>A</i>	<i>D</i> —H $\cdots$ <i>A</i>
C4—H4 $\cdots$ O4 <sup>i</sup>	0.93	2.60	3.418 (4)	148

Symmetry code: (i)  $x-1/2, -y+1/2, z-1/2$ .