

Acta Crystallographica Section E

Structure Reports

Online

ISSN 1600-5368

2-[(Pyrimidin-2-ylamino)methyl]phenol

Jing Xu,^a Shan Gao^a and Seik Weng Ng^{b,c*}

^aKey Laboratory of Functional Inorganic Material Chemistry, Ministry of Education, Heilongjiang University, Harbin 150080, People's Republic of China, ^bDepartment of Chemistry, University of Malaya, 50603 Kuala Lumpur, Malaysia, and ^cChemistry Department, Faculty of Science, King Abdulaziz University, PO Box 80203 Jeddah, Saudi Arabia

Correspondence e-mail: seikweng@um.edu.my

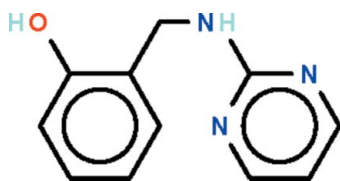
Received 4 November 2011; accepted 7 November 2011

Key indicators: single-crystal X-ray study; $T = 293$ K; mean $\sigma(\text{C}-\text{C}) = 0.002$ Å; R factor = 0.040; wR factor = 0.149; data-to-parameter ratio = 15.9.

In the title compound, $\text{C}_{11}\text{H}_{11}\text{N}_3\text{O}$, the aromatic rings at either ends of the $-\text{CH}_2-\text{NH}-$ link are twisted by 72.58 (8°); the hydroxy substituent is a hydrogen-bond donor to an N atom of the pyrimidine ring. The other N atom of the pyrimidine ring is a hydrogen-bond acceptor to the amino group of an inversion-related molecule.

Related literature

For the *N*-salicylidene-2-aminopyrimidine precursor, see: El-Haty *et al.* (1990); Issa *et al.* (2011); Shalabi & Abdel-Ghani (1990). For a related structure, see: Xu *et al.* (2011).



Experimental

Crystal data

$\text{C}_{11}\text{H}_{11}\text{N}_3\text{O}$
 $M_r = 201.23$
 Monoclinic, $P2_1/n$
 $a = 5.8625$ (4) Å
 $b = 9.3610$ (7) Å
 $c = 18.4058$ (13) Å
 $\beta = 95.208$ (2°)

$V = 1005.92$ (12) Å³
 $Z = 4$
 Mo $K\alpha$ radiation
 $\mu = 0.09$ mm⁻¹
 $T = 293$ K
 $0.22 \times 0.17 \times 0.15$ mm

Data collection

Rigaku R-AXIS RAPID IP
 diffractometer
 Absorption correction: multi-scan
 (ABSCOR; Higashi, 1995)
 $T_{\min} = 0.981$, $T_{\max} = 0.987$

9626 measured reflections
 2296 independent reflections
 1476 reflections with $I > 2\sigma(I)$
 $R_{\text{int}} = 0.030$

Refinement

$R[F^2 > 2\sigma(F^2)] = 0.040$
 $wR(F^2) = 0.149$
 $S = 1.12$
 2296 reflections
 144 parameters
 2 restraints

H atoms treated by a mixture of
 independent and constrained
 refinement
 $\Delta\rho_{\max} = 0.14$ e Å⁻³
 $\Delta\rho_{\min} = -0.15$ e Å⁻³

Table 1

Hydrogen-bond geometry (Å, °).

$D-H\cdots A$	$D-H$	$H\cdots A$	$D\cdots A$	$D-H\cdots A$
$\text{O1}-\text{H1o}\cdots\text{N2}$	0.86 (1)	1.92 (1)	2.761 (2)	164 (2)
$\text{N1}-\text{H1n}\cdots\text{N3}^i$	0.88 (1)	2.15 (1)	3.023 (2)	176 (2)

Symmetry code: (i) $-x + 1, -y + 1, -z + 1$.

Data collection: *RAPID-AUTO* (Rigaku, 1998); cell refinement: *RAPID-AUTO*; data reduction: *CrystalClear* (Rigaku/MSK, 2002); program(s) used to solve structure: *SHELXS97* (Sheldrick, 2008); program(s) used to refine structure: *SHELXL97* (Sheldrick, 2008); molecular graphics: *X-SEED* (Barbour, 2001); software used to prepare material for publication: *publCIF* (Westrip, 2010).

This work was supported by the Key Project of the Natural Science Foundation of Heilongjiang Province (No. ZD200903), the Key Project of the Education Bureau of Heilongjiang Province (No. 12511z023), Heilongjiang University (Hdtd2010-04) and the University of Malaya.

Supplementary data and figures for this paper are available from the IUCr electronic archives (Reference: XU5383).

References

- Barbour, L. J. (2001). *J. Supramol. Chem.* **1**, 189–191.
 El-Haty, M. T., Mohamed, A. E., Adam, F. A. & Gabr, A. A. (1990). *Spectrochim. Acta Part A*, **46**, 1743–1749.
 Higashi, T. (1995). *ABSCOR*. Rigaku Corporation, Tokyo, Japan.
 Issa, Y. M., El Ansary, A. L., Sherif, O. E. & Hassib, H. B. (2011). *Spectrochim. Acta Part A*, **79**, 513–521.
 Rigaku (1998). *RAPID-AUTO*. Rigaku Corporation, Tokyo, Japan.
 Rigaku/MSK (2002). *CrystalClear*. Rigaku/MSK Inc., The Woodlands, Texas, USA.
 Shalabi, A. S. & Abdel-Ghani, N. T. (1990). *Egypt. J. Chem.* **33**, 345–357.
 Sheldrick, G. M. (2008). *Acta Cryst.* **A64**, 112–122.
 Westrip, S. P. (2010). *J. Appl. Cryst.* **43**, 920–925.
 Xu, J., Gao, S. & Ng, S. W. (2011). *Acta Cryst.* **E67**, o3259.

supporting information

Acta Cryst. (2011). E67, o3258 [https://doi.org/10.1107/S1600536811046848]

2-[(Pyrimidin-2-ylamino)methyl]phenol

Jing Xu, Shan Gao and Seik Weng Ng

S1. Comment

There are numerous studies on the Schiff bases derived by condensing salicylaldehyde and an aromatic amine. In this study, the azomethine double-bond of *N*-salicylidene-2-aminopyrimidine (El-Haty *et al.*, 1990; Issa *et al.*, 2011; Shalabi & Abdel-Ghani, 1990) is reduced by sodium borohydride to yield the title secondary amine (Scheme I). The two aromatic rings at either ends of the –CH₂–NH– link of C₁₁H₁₁N₃O are twisted by 72.58 (8)°; the hydroxy substituent is hydrogen-bond donor to anone N atom of the pyrimidyl ring (Fig. 1). The other N atom of the pyrimidyl ring is hydrogen-bond acceptor to the amino group of an inversion-related molecule (Table 1).

S2. Experimental

A solution of 2-aminopyrimidine (1 mmol) and salicylaldehyde (1 mmol) in toluene (50 ml) was heated for 10 h. The solvent was removed under vacuum, and the residue was reduced in absolute methanol by sodium borohydride. Colorless crystals were obtained by recrystallization from methanol; yield 80%.

S3. Refinement

Carbon-bound H-atoms were placed in calculated positions (C–H 0.93–0.97 Å) and were included in the refinement in the riding model approximation, with $U_{\text{iso}}(\text{H}) = 1.2U_{\text{eq}}(\text{C})$. The amino and hydroxy H-atoms were located in a difference Fourier map, and were refined with distance restraints N–H 0.88±0.01 Å and O–H 0.84±0.01 Å; their temperature factors were refined.

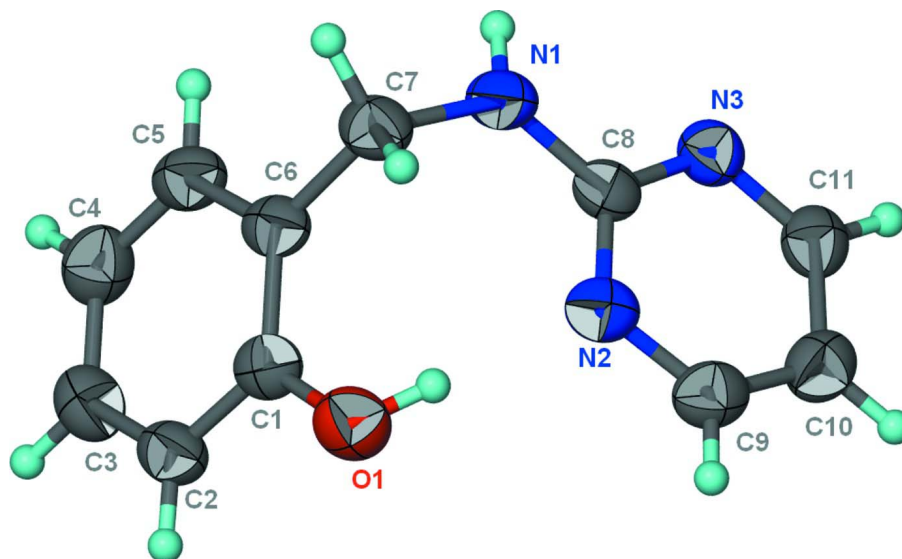


Figure 1

Thermal ellipsoid plot (Barbour, 2001) of $C_{11}H_{11}N_3O$ at the 50% probability level; hydrogen atoms are drawn as spheres of arbitrary radius.

2-[(Pyrimidin-2-ylamino)methyl]phenol

Crystal data

$C_{11}H_{11}N_3O$
 $M_r = 201.23$
 Monoclinic, $P2_1/n$
 Hall symbol: -P 2yn
 $a = 5.8625$ (4) Å
 $b = 9.3610$ (7) Å
 $c = 18.4058$ (13) Å
 $\beta = 95.208$ (2)°
 $V = 1005.92$ (12) Å³
 $Z = 4$

$F(000) = 424$
 $D_x = 1.329$ Mg m⁻³
 Mo $K\alpha$ radiation, $\lambda = 0.71073$ Å
 Cell parameters from 6005 reflections
 $\theta = 3.1$ – 27.4 °
 $\mu = 0.09$ mm⁻¹
 $T = 293$ K
 Prism, colorless
 $0.22 \times 0.17 \times 0.15$ mm

Data collection

Rigaku R-AXIS RAPID IP
 diffractometer
 Radiation source: fine-focus sealed tube
 Graphite monochromator
 ω scan
 Absorption correction: multi-scan
 (ABSCOR; Higashi, 1995)
 $T_{\min} = 0.981$, $T_{\max} = 0.987$

9626 measured reflections
 2296 independent reflections
 1476 reflections with $I > 2\sigma(I)$
 $R_{\text{int}} = 0.030$
 $\theta_{\max} = 27.4$ °, $\theta_{\min} = 3.1$ °
 $h = -7 \rightarrow 6$
 $k = -12 \rightarrow 12$
 $l = -23 \rightarrow 23$

Refinement

Refinement on F^2
 Least-squares matrix: full
 $R[F^2 > 2\sigma(F^2)] = 0.040$
 $wR(F^2) = 0.149$
 $S = 1.12$
 2296 reflections
 144 parameters

2 restraints
 Primary atom site location: structure-invariant
 direct methods
 Secondary atom site location: difference Fourier
 map
 Hydrogen site location: inferred from
 neighbouring sites

H atoms treated by a mixture of independent
and constrained refinement
 $w = 1/[\sigma^2(F_o^2) + (0.0796P)^2 + 0.034P]$
where $P = (F_o^2 + 2F_c^2)/3$

$(\Delta/\sigma)_{\max} = 0.001$
 $\Delta\rho_{\max} = 0.14 \text{ e } \text{\AA}^{-3}$
 $\Delta\rho_{\min} = -0.15 \text{ e } \text{\AA}^{-3}$

Fractional atomic coordinates and isotropic or equivalent isotropic displacement parameters (\AA^2)

	<i>x</i>	<i>y</i>	<i>z</i>	$U_{\text{iso}}^*/U_{\text{eq}}$
O1	1.0476 (2)	0.91985 (13)	0.62203 (7)	0.0630 (4)
N1	0.5979 (2)	0.67826 (16)	0.53868 (8)	0.0571 (4)
N2	0.9251 (2)	0.77099 (14)	0.49494 (7)	0.0534 (4)
N3	0.7438 (2)	0.55875 (14)	0.44465 (7)	0.0517 (4)
C1	0.9836 (3)	0.82174 (16)	0.67131 (9)	0.0488 (4)
C2	1.1341 (3)	0.79323 (18)	0.73237 (9)	0.0554 (4)
H2	1.2718	0.8428	0.7393	0.066*
C3	1.0819 (3)	0.69305 (19)	0.78229 (10)	0.0622 (5)
H3	1.1850	0.6737	0.8225	0.075*
C4	0.8756 (3)	0.62029 (19)	0.77307 (10)	0.0646 (5)
H4	0.8405	0.5512	0.8066	0.078*
C5	0.7224 (3)	0.65110 (18)	0.71357 (10)	0.0581 (4)
H5	0.5827	0.6034	0.7081	0.070*
C6	0.7718 (2)	0.75136 (16)	0.66180 (9)	0.0500 (4)
C7	0.5997 (3)	0.78265 (19)	0.59729 (9)	0.0580 (4)
H7A	0.4480	0.7868	0.6143	0.070*
H7B	0.6329	0.8760	0.5779	0.070*
C8	0.7604 (2)	0.66981 (16)	0.49207 (8)	0.0478 (4)
C9	1.0801 (3)	0.75831 (19)	0.44642 (10)	0.0574 (4)
H9	1.1954	0.8266	0.4466	0.069*
C10	1.0780 (3)	0.65013 (19)	0.39651 (9)	0.0593 (5)
H10	1.1880	0.6432	0.3633	0.071*
C11	0.9034 (3)	0.55172 (19)	0.39818 (9)	0.0550 (4)
H11	0.8973	0.4766	0.3650	0.066*
H1O	1.000 (4)	0.889 (3)	0.5791 (8)	0.117 (9)*
H1N	0.501 (3)	0.6073 (14)	0.5417 (10)	0.062 (5)*

Atomic displacement parameters (\AA^2)

	U^{11}	U^{22}	U^{33}	U^{12}	U^{13}	U^{23}
O1	0.0674 (8)	0.0543 (7)	0.0667 (8)	-0.0114 (5)	0.0032 (6)	0.0017 (6)
N1	0.0425 (7)	0.0658 (9)	0.0629 (8)	-0.0070 (6)	0.0040 (6)	-0.0127 (7)
N2	0.0488 (7)	0.0504 (8)	0.0601 (8)	-0.0022 (6)	0.0006 (6)	0.0040 (6)
N3	0.0495 (7)	0.0547 (8)	0.0500 (7)	0.0018 (6)	0.0006 (6)	-0.0008 (6)
C1	0.0492 (8)	0.0404 (8)	0.0572 (9)	0.0000 (6)	0.0070 (7)	-0.0069 (7)
C2	0.0488 (8)	0.0575 (10)	0.0590 (10)	-0.0035 (7)	-0.0001 (8)	-0.0112 (8)
C3	0.0656 (11)	0.0631 (11)	0.0563 (10)	0.0039 (8)	-0.0026 (8)	-0.0032 (8)
C4	0.0772 (12)	0.0569 (10)	0.0611 (10)	-0.0049 (9)	0.0134 (9)	0.0010 (8)
C5	0.0504 (9)	0.0557 (10)	0.0694 (11)	-0.0077 (7)	0.0120 (8)	-0.0116 (8)
C6	0.0427 (8)	0.0484 (9)	0.0591 (10)	0.0026 (6)	0.0064 (7)	-0.0118 (7)

C7	0.0446 (8)	0.0635 (10)	0.0652 (10)	0.0062 (7)	0.0016 (8)	-0.0130 (8)
C8	0.0426 (8)	0.0499 (9)	0.0494 (8)	0.0026 (6)	-0.0039 (7)	0.0025 (7)
C9	0.0523 (9)	0.0568 (10)	0.0629 (10)	-0.0025 (7)	0.0042 (8)	0.0124 (8)
C10	0.0572 (10)	0.0637 (11)	0.0581 (10)	0.0031 (8)	0.0100 (8)	0.0067 (8)
C11	0.0581 (9)	0.0561 (10)	0.0503 (9)	0.0067 (8)	0.0019 (8)	0.0012 (7)

Geometric parameters (Å, °)

O1—C1	1.367 (2)	C3—H3	0.9300
O1—H1O	0.863 (10)	C4—C5	1.382 (3)
N1—C8	1.341 (2)	C4—H4	0.9300
N1—C7	1.455 (2)	C5—C6	1.387 (2)
N1—H1N	0.878 (9)	C5—H5	0.9300
N2—C9	1.336 (2)	C6—C7	1.515 (2)
N2—C8	1.350 (2)	C7—H7A	0.9700
N3—C11	1.325 (2)	C7—H7B	0.9700
N3—C8	1.3552 (19)	C9—C10	1.367 (2)
C1—C2	1.390 (2)	C9—H9	0.9300
C1—C6	1.402 (2)	C10—C11	1.380 (2)
C2—C3	1.367 (2)	C10—H10	0.9300
C2—H2	0.9300	C11—H11	0.9300
C3—C4	1.385 (3)		
C1—O1—H1O	107.4 (18)	C5—C6—C1	118.05 (15)
C8—N1—C7	123.78 (14)	C5—C6—C7	120.21 (15)
C8—N1—H1N	119.7 (12)	C1—C6—C7	121.74 (15)
C7—N1—H1N	115.0 (12)	N1—C7—C6	114.25 (13)
C9—N2—C8	116.03 (14)	N1—C7—H7A	108.7
C11—N3—C8	116.12 (14)	C6—C7—H7A	108.7
O1—C1—C2	118.23 (14)	N1—C7—H7B	108.7
O1—C1—C6	121.74 (14)	C6—C7—H7B	108.7
C2—C1—C6	120.03 (15)	H7A—C7—H7B	107.6
C3—C2—C1	120.70 (15)	N1—C8—N2	118.73 (14)
C3—C2—H2	119.7	N1—C8—N3	116.33 (14)
C1—C2—H2	119.7	N2—C8—N3	124.93 (15)
C2—C3—C4	120.10 (16)	N2—C9—C10	123.37 (16)
C2—C3—H3	120.0	N2—C9—H9	118.3
C4—C3—H3	120.0	C10—C9—H9	118.3
C5—C4—C3	119.47 (17)	C9—C10—C11	116.19 (16)
C5—C4—H4	120.3	C9—C10—H10	121.9
C3—C4—H4	120.3	C11—C10—H10	121.9
C4—C5—C6	121.60 (16)	N3—C11—C10	123.36 (16)
C4—C5—H5	119.2	N3—C11—H11	118.3
C6—C5—H5	119.2	C10—C11—H11	118.3
O1—C1—C2—C3	-178.05 (15)	C5—C6—C7—N1	-79.8 (2)
C6—C1—C2—C3	2.4 (2)	C1—C6—C7—N1	100.33 (18)
C1—C2—C3—C4	-1.1 (3)	C7—N1—C8—N2	-6.1 (2)

C2—C3—C4—C5	-0.8 (3)	C7—N1—C8—N3	174.43 (14)
C3—C4—C5—C6	1.4 (3)	C9—N2—C8—N1	-178.93 (13)
C4—C5—C6—C1	0.0 (2)	C9—N2—C8—N3	0.4 (2)
C4—C5—C6—C7	-179.92 (15)	C11—N3—C8—N1	179.28 (13)
O1—C1—C6—C5	178.65 (14)	C11—N3—C8—N2	-0.1 (2)
C2—C1—C6—C5	-1.8 (2)	C8—N2—C9—C10	-0.5 (2)
O1—C1—C6—C7	-1.5 (2)	N2—C9—C10—C11	0.2 (2)
C2—C1—C6—C7	178.06 (14)	C8—N3—C11—C10	-0.2 (2)
C8—N1—C7—C6	-74.7 (2)	C9—C10—C11—N3	0.2 (2)

Hydrogen-bond geometry (Å, °)

<i>D</i> —H \cdots <i>A</i>	<i>D</i> —H	H \cdots <i>A</i>	<i>D</i> \cdots <i>A</i>	<i>D</i> —H \cdots <i>A</i>
O1—H1o \cdots N2	0.86 (1)	1.92 (1)	2.761 (2)	164 (2)
N1—H1n \cdots N3 ⁱ	0.88 (1)	2.15 (1)	3.023 (2)	176 (2)

Symmetry code: (i) $-x+1, -y+1, -z+1$.