

Acta Crystallographica Section E

Structure Reports

Online

ISSN 1600-5368

3-(3-Chlorophenylsulfonyl)-2,5,7-trimethyl-1-benzofuran

 Hong Dae Choi,^a Pil Ja Seo^a and Uk Lee^{b*}

^aDepartment of Chemistry, Donggeui University, San 24 Kaya-dong Busanjin-gu, Busan 614-714, Republic of Korea, and ^bDepartment of Chemistry, Pukyong National University, 599-1 Daeyeon 3-dong, Nam-gu, Busan 608-737, Republic of Korea

Correspondence e-mail: uklee@pknu.ac.kr

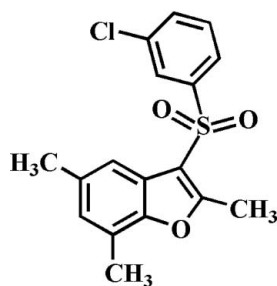
Received 21 February 2012; accepted 24 February 2012

 Key indicators: single-crystal X-ray study; $T = 173$ K; mean $\sigma(\text{C}-\text{C}) = 0.002$ Å; R factor = 0.038; wR factor = 0.105; data-to-parameter ratio = 17.6.

In the title compound, $\text{C}_{17}\text{H}_{15}\text{ClO}_3\text{S}$, the 3-chlorophenyl ring makes a dihedral angle of $77.76(6)^\circ$ with the mean plane [r.m.s. deviation = $0.007(1)$ Å] of the benzofuran fragment. In the crystal, molecules are linked by weak intermolecular $\text{C}-\text{H}\cdots\text{O}$ and $\text{C}-\text{H}\cdots\pi$ interactions.

Related literature

For background information and the crystal structures of related compounds, see: Choi *et al.* (2008, 2010); Seo *et al.* (2011).



Experimental

Crystal data

 $\text{C}_{17}\text{H}_{15}\text{ClO}_3\text{S}$
 $M_r = 334.80$

Monoclinic, $P2_1/c$
 $a = 14.5299(3)$ Å
 $b = 12.9778(2)$ Å
 $c = 8.1776(1)$ Å
 $\beta = 92.615(1)^\circ$
 $V = 1540.41(4)$ Å³

$Z = 4$
 Mo $K\alpha$ radiation
 $\mu = 0.39$ mm⁻¹
 $T = 173$ K
 $0.36 \times 0.29 \times 0.25$ mm

Data collection

Bruker SMART APEXII CCD diffractometer
 Absorption correction: multi-scan (SADABS; Bruker, 2009)
 $T_{\min} = 0.872$, $T_{\max} = 0.908$

14420 measured reflections
 3551 independent reflections
 3053 reflections with $I > 2\sigma(I)$
 $R_{\text{int}} = 0.028$

Refinement

$R[F^2 > 2\sigma(F^2)] = 0.038$
 $wR(F^2) = 0.105$
 $S = 1.04$
 3551 reflections

202 parameters
 H-atom parameters constrained
 $\Delta\rho_{\text{max}} = 0.31$ e Å⁻³
 $\Delta\rho_{\text{min}} = -0.41$ e Å⁻³

Table 1

Hydrogen-bond geometry (Å, °).

Cg1 and Cg2 are the centroids of the C1/C2/C7/O1/C8 furan ring and the $\text{C12}-\text{C17}$ benzene ring, respectively.

$D-\text{H}\cdots A$	$D-\text{H}$	$\text{H}\cdots A$	$D\cdots A$	$D-\text{H}\cdots A$
$\text{C14}-\text{H14}\cdots\text{O3}^{\text{i}}$	0.95	2.60	3.264 (2)	127
$\text{C10}-\text{H10A}\cdots\text{Cg2}^{\text{ii}}$	0.98	2.86	3.704 (2)	145
$\text{C10}-\text{H10C}\cdots\text{Cg1}^{\text{ii}}$	0.98	3.08	3.536 (2)	110

Symmetry codes: (i) $-x + 1, -y + 1, -z + 2$; (ii) $x, -y + \frac{3}{2}, z - \frac{1}{2}$.

Data collection: APEX2 (Bruker, 2009); cell refinement: SAINT (Bruker, 2009); data reduction: SAINT; program(s) used to solve structure: SHELXS97 (Sheldrick, 2008); program(s) used to refine structure: SHELXL97 (Sheldrick, 2008); molecular graphics: ORTEP-3 (Farrugia, 1997) and DIAMOND (Brandenburg, 1998); software used to prepare material for publication: SHELXL97.

Supplementary data and figures for this paper are available from the IUCr electronic archives (Reference: BH2417).

References

- Brandenburg, K. (1998). DIAMOND. Crystal Impact GbR, Bonn, Germany.
 Bruker (2009). APEX2, SADABS and SAINT. Bruker AXS Inc., Madison, Wisconsin, USA.
 Choi, H. D., Seo, P. J., Son, B. W. & Lee, U. (2008). Acta Cryst. E64, o794.
 Choi, H. D., Seo, P. J., Son, B. W. & Lee, U. (2010). Acta Cryst. E66, o1813.
 Farrugia, L. J. (1997). J. Appl. Cryst. 30, 565.
 Seo, P. J., Choi, H. D., Son, B. W. & Lee, U. (2011). Acta Cryst. E67, o3359.
 Sheldrick, G. M. (2008). Acta Cryst. A64, 112–122.

supporting information

Acta Cryst. (2012). E68, o945 [https://doi.org/10.1107/S1600536812008355]

3-(3-Chlorophenylsulfonyl)-2,5,7-trimethyl-1-benzofuran**Hong Dae Choi, Pil Ja Seo and Uk Lee****S1. Comment**

As a part of our ongoing study of 2,5,7-trimethyl-1-benzofuran derivatives containing 3-phenylsulfonyl (Choi *et al.*, 2008), 3-(4-fluorophenylsulfonyl) (Choi *et al.*, 2010) and 3-(3-fluorophenylsulfonyl) (Seo *et al.*, 2011) substituents, we report herein the crystal structure of the title compound.

In the title molecule (Fig. 1), the benzofuran unit is essentially planar, with a mean deviation of 0.007 (1) Å from the least-squares plane defined by the nine constituent atoms. The dihedral angle between the 3-chlorophenyl ring and the mean plane of the benzofuran fragment is 77.76 (6)°. The crystal packing is stabilized by weak intermolecular C–H···O hydrogen bonds (Fig. 2 & Table 1). The crystal packing is further stabilized by intermolecular C–H··· π interactions (Fig. 3 & Table 1, Cg1 and Cg2 are the centroids of the C1/C2/ C7/O1/C8 furan ring and the C12-C17 benzene ring, respectively).

S2. Experimental

77% 3-Chloroperoxybenzoic acid (493 mg, 2.2 mmol) was added in small portions to a stirred solution of 3-(3-chlorophenylsulfonyl)-2,5,7-trimethyl-1-benzofuran (333 mg, 1.1 mmol) in dichloromethane (40 mL) at 273 K. After being stirred at room temperature for 10 h., the mixture was washed with saturated sodium bicarbonate solution and the organic layer was separated, dried over magnesium sulfate, filtered and concentrated at reduced pressure. The residue was purified by column chromatography (benzene) to afford the title compound as a colorless solid [yield 71%, m.p. 413-414 K; R_f = 0.46 (benzene)]. Single crystals suitable for X-ray diffraction were prepared by slow evaporation of a solution of the title compound in acetone, at room temperature.

S3. Refinement

All H atoms were positioned geometrically and refined using a riding model, with C–H = 0.95 Å for aryl and 0.98 Å for methyl H atoms. $U_{\text{iso}}(\text{H}) = 1.2U_{\text{eq}}(\text{C})$ for aryl and $1.5U_{\text{eq}}(\text{C})$ for methyl H atoms.

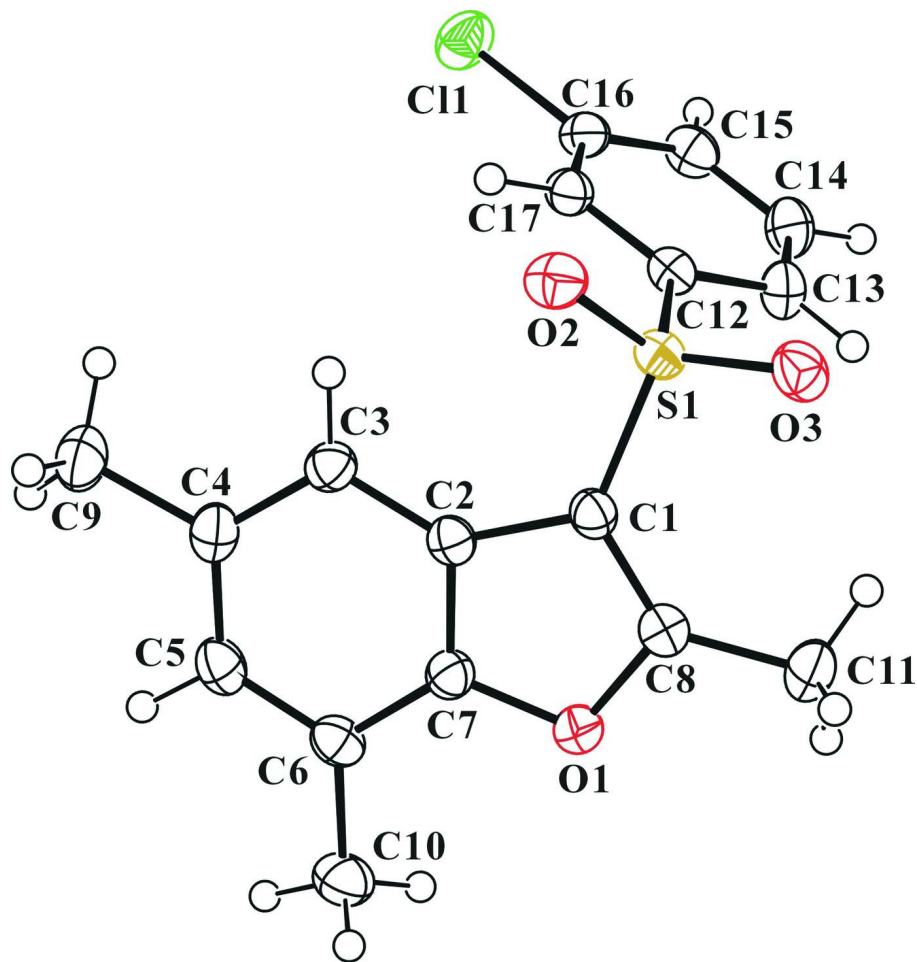


Figure 1

The molecular structure of the title compound with displacement ellipsoids drawn at the 50% probability level. H atoms are presented as small spheres of arbitrary radius.

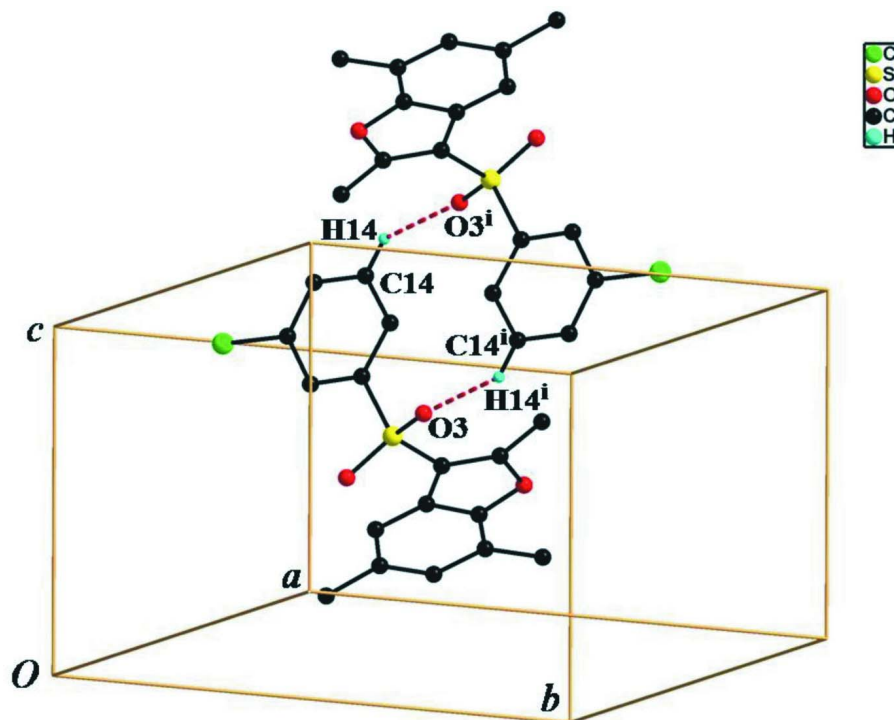


Figure 2

A view of the C–H...O interactions (dotted lines) in the crystal structure of the title compound. H atoms non-participating in hydrogen-bonding were omitted for clarity. Symmetry code: (i) $-x+1, -y+1, -z+2$.

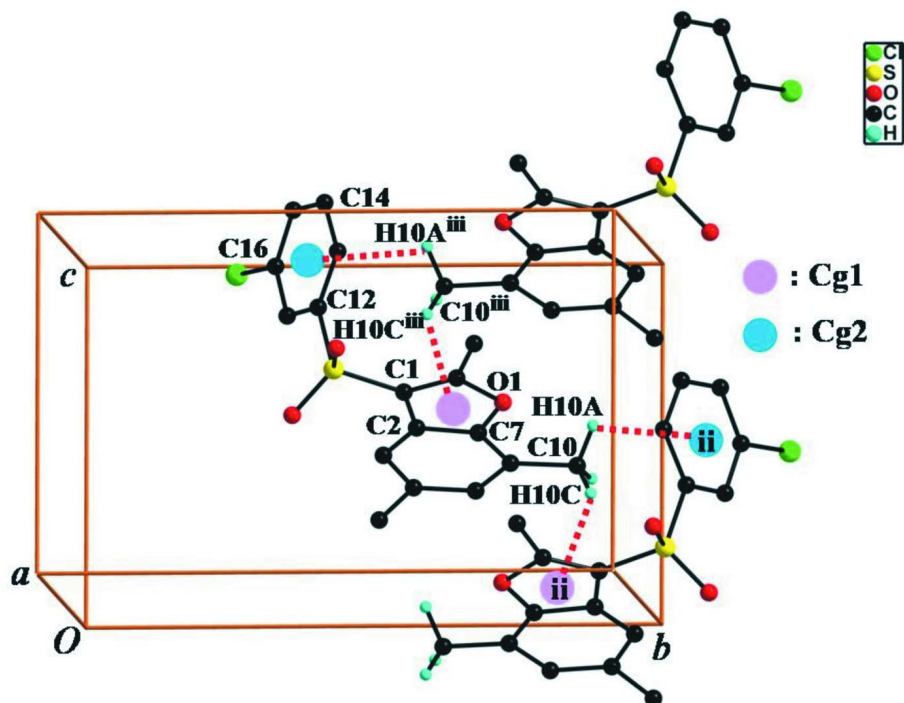


Figure 3

A view of the C–H··· π interactions (dotted lines) in the crystal structure of the title compound. H atoms non-participating in hydrogen-bonding were omitted for clarity [Symmetry codes: (ii) $x, -y + 3/2, z - 1/2$; (iii) $x, -y + 3/2, z + 1/2$].

3-(3-Chlorophenylsulfonyl)-2,5,7-trimethyl-1-benzofuran

Crystal data

$C_{17}H_{15}ClO_3S$

$M_r = 334.80$

Monoclinic, $P2_1/c$

Hall symbol: $-P\ 2ybc$

$a = 14.5299\ (3)\ \text{\AA}$

$b = 12.9778\ (2)\ \text{\AA}$

$c = 8.1776\ (1)\ \text{\AA}$

$\beta = 92.615\ (1)^\circ$

$V = 1540.41\ (4)\ \text{\AA}^3$

$Z = 4$

$F(000) = 696$

$D_x = 1.444\ \text{Mg m}^{-3}$

Melting point: 413 K

Mo $K\alpha$ radiation, $\lambda = 0.71073\ \text{\AA}$

Cell parameters from 7514 reflections

$\theta = 2.8\text{--}27.4^\circ$

$\mu = 0.39\ \text{mm}^{-1}$

$T = 173\ \text{K}$

Block, colourless

$0.36 \times 0.29 \times 0.25\ \text{mm}$

Data collection

Bruker SMART APEXII CCD
diffractometer

Radiation source: rotating anode

Graphite multilayer monochromator

Detector resolution: $10.0\ \text{pixels mm}^{-1}$

φ and ω scans

Absorption correction: multi-scan

(*SADABS*; Bruker, 2009)

$T_{\min} = 0.872, T_{\max} = 0.908$

14420 measured reflections

3551 independent reflections

3053 reflections with $I > 2\sigma(I)$

$R_{\text{int}} = 0.028$

$\theta_{\max} = 27.5^\circ, \theta_{\min} = 1.4^\circ$

$h = -15 \rightarrow 18$

$k = -15 \rightarrow 16$

$l = -10 \rightarrow 10$

*Refinement*Refinement on F^2

Least-squares matrix: full

 $R[F^2 > 2\sigma(F^2)] = 0.038$ $wR(F^2) = 0.105$ $S = 1.04$

3551 reflections

202 parameters

0 restraints

0 constraints

Primary atom site location: structure-invariant
direct methodsSecondary atom site location: difference Fourier
map

Hydrogen site location: difference Fourier map

H-atom parameters constrained

 $w = 1/[\sigma^2(F_o^2) + (0.0542P)^2 + 0.775P]$ where $P = (F_o^2 + 2F_c^2)/3$ $(\Delta/\sigma)_{\max} < 0.001$ $\Delta\rho_{\max} = 0.31 \text{ e } \text{\AA}^{-3}$ $\Delta\rho_{\min} = -0.41 \text{ e } \text{\AA}^{-3}$ *Fractional atomic coordinates and isotropic or equivalent isotropic displacement parameters (\AA^2)*

	<i>x</i>	<i>y</i>	<i>z</i>	$U_{\text{iso}}^*/U_{\text{eq}}$
Cl1	0.11297 (3)	0.26899 (4)	0.95927 (6)	0.03925 (14)
S1	0.38836 (3)	0.46155 (3)	0.65400 (5)	0.02434 (12)
O1	0.32039 (8)	0.75011 (9)	0.56955 (15)	0.0285 (3)
O2	0.35944 (9)	0.38758 (10)	0.53201 (14)	0.0313 (3)
O3	0.48438 (8)	0.47396 (10)	0.69791 (15)	0.0325 (3)
C1	0.34200 (11)	0.57998 (13)	0.59670 (19)	0.0242 (3)
C2	0.25351 (11)	0.59471 (13)	0.51051 (18)	0.0234 (3)
C3	0.18368 (12)	0.53119 (13)	0.4455 (2)	0.0265 (4)
H3	0.1880	0.4584	0.4548	0.032*
C4	0.10747 (12)	0.57732 (15)	0.3666 (2)	0.0297 (4)
C5	0.10147 (12)	0.68466 (15)	0.3578 (2)	0.0305 (4)
H5	0.0485	0.7142	0.3040	0.037*
C6	0.16886 (12)	0.75061 (14)	0.4236 (2)	0.0281 (4)
C7	0.24429 (11)	0.70102 (13)	0.49726 (19)	0.0252 (3)
C8	0.37838 (12)	0.67465 (14)	0.6292 (2)	0.0278 (4)
C9	0.03198 (14)	0.51129 (17)	0.2890 (3)	0.0404 (5)
H9A	0.0450	0.4981	0.1743	0.061*
H9B	-0.0271	0.5472	0.2943	0.061*
H9C	0.0291	0.4457	0.3479	0.061*
C10	0.16093 (14)	0.86578 (15)	0.4170 (3)	0.0381 (4)
H10A	0.1800	0.8948	0.5239	0.057*
H10B	0.0969	0.8851	0.3895	0.057*
H10C	0.2007	0.8927	0.3334	0.057*
C11	0.46509 (13)	0.71222 (16)	0.7113 (3)	0.0385 (4)
H11A	0.4854	0.6634	0.7970	0.058*
H11B	0.4544	0.7798	0.7606	0.058*
H11C	0.5127	0.7183	0.6308	0.058*
C12	0.33205 (11)	0.42967 (13)	0.83512 (19)	0.0241 (3)
C13	0.36775 (12)	0.46631 (15)	0.9846 (2)	0.0300 (4)
H13	0.4209	0.5090	0.9896	0.036*
C14	0.32471 (13)	0.43965 (16)	1.1264 (2)	0.0335 (4)
H14	0.3488	0.4634	1.2296	0.040*
C15	0.24674 (13)	0.37856 (14)	1.1179 (2)	0.0308 (4)

H15	0.2174	0.3597	1.2150	0.037*
C16	0.21193 (12)	0.34517 (13)	0.9675 (2)	0.0273 (4)
C17	0.25354 (11)	0.36921 (13)	0.8236 (2)	0.0253 (3)
H17	0.2292	0.3452	0.7208	0.030*

Atomic displacement parameters (Å²)

	U^{11}	U^{22}	U^{33}	U^{12}	U^{13}	U^{23}
C11	0.0390 (3)	0.0409 (3)	0.0380 (3)	-0.0132 (2)	0.0041 (2)	0.0024 (2)
S1	0.0259 (2)	0.0245 (2)	0.0226 (2)	0.00192 (15)	0.00121 (15)	0.00141 (15)
O1	0.0278 (6)	0.0236 (6)	0.0338 (7)	-0.0011 (5)	-0.0036 (5)	0.0008 (5)
O2	0.0416 (7)	0.0275 (7)	0.0249 (6)	0.0006 (5)	0.0037 (5)	-0.0028 (5)
O3	0.0252 (6)	0.0372 (7)	0.0352 (7)	0.0032 (5)	0.0020 (5)	0.0056 (6)
C1	0.0245 (8)	0.0261 (9)	0.0219 (7)	0.0003 (6)	-0.0005 (6)	0.0014 (6)
C2	0.0245 (8)	0.0262 (8)	0.0196 (7)	0.0003 (6)	0.0021 (6)	0.0008 (6)
C3	0.0291 (8)	0.0255 (9)	0.0249 (8)	-0.0021 (7)	0.0016 (6)	-0.0008 (7)
C4	0.0263 (8)	0.0377 (10)	0.0251 (8)	-0.0039 (7)	-0.0003 (7)	-0.0010 (7)
C5	0.0242 (8)	0.0373 (10)	0.0298 (8)	0.0037 (7)	-0.0003 (7)	0.0040 (7)
C6	0.0278 (8)	0.0295 (9)	0.0273 (8)	0.0036 (7)	0.0040 (7)	0.0039 (7)
C7	0.0262 (8)	0.0260 (9)	0.0233 (8)	-0.0019 (6)	0.0006 (6)	0.0002 (7)
C8	0.0275 (8)	0.0283 (9)	0.0273 (8)	0.0005 (7)	-0.0008 (7)	0.0011 (7)
C9	0.0328 (10)	0.0460 (12)	0.0417 (11)	-0.0079 (9)	-0.0073 (8)	-0.0002 (9)
C10	0.0379 (10)	0.0305 (10)	0.0456 (11)	0.0052 (8)	0.0001 (8)	0.0059 (8)
C11	0.0329 (9)	0.0353 (11)	0.0463 (11)	-0.0057 (8)	-0.0092 (8)	-0.0038 (9)
C12	0.0254 (8)	0.0240 (8)	0.0227 (7)	0.0033 (6)	0.0005 (6)	0.0014 (6)
C13	0.0258 (8)	0.0373 (10)	0.0263 (8)	-0.0014 (7)	-0.0033 (7)	-0.0013 (7)
C14	0.0361 (10)	0.0419 (11)	0.0220 (8)	0.0005 (8)	-0.0038 (7)	-0.0032 (7)
C15	0.0360 (9)	0.0336 (10)	0.0229 (8)	0.0031 (7)	0.0035 (7)	0.0021 (7)
C16	0.0285 (8)	0.0235 (8)	0.0298 (8)	-0.0006 (7)	0.0013 (7)	0.0018 (7)
C17	0.0305 (8)	0.0230 (8)	0.0221 (7)	0.0010 (7)	-0.0019 (6)	-0.0007 (6)

Geometric parameters (Å, °)

C11—C16	1.7437 (18)	C9—H9A	0.9800
S1—O2	1.4336 (13)	C9—H9B	0.9800
S1—O3	1.4337 (13)	C9—H9C	0.9800
S1—C1	1.7341 (17)	C10—H10A	0.9800
S1—C12	1.7734 (16)	C10—H10B	0.9800
O1—C8	1.367 (2)	C10—H10C	0.9800
O1—C7	1.385 (2)	C11—H11A	0.9800
C1—C8	1.359 (2)	C11—H11B	0.9800
C1—C2	1.450 (2)	C11—H11C	0.9800
C2—C7	1.390 (2)	C12—C17	1.384 (2)
C2—C3	1.394 (2)	C12—C13	1.390 (2)
C3—C4	1.391 (2)	C13—C14	1.386 (2)
C3—H3	0.9500	C13—H13	0.9500
C4—C5	1.397 (3)	C14—C15	1.382 (3)
C4—C9	1.509 (3)	C14—H14	0.9500

C5—C6	1.390 (3)	C15—C16	1.378 (2)
C5—H5	0.9500	C15—H15	0.9500
C6—C7	1.385 (2)	C16—C17	1.383 (2)
C6—C10	1.500 (3)	C17—H17	0.9500
C8—C11	1.483 (2)		
O2—S1—O3	120.04 (8)	C4—C9—H9C	109.5
O2—S1—C1	107.91 (8)	H9A—C9—H9C	109.5
O3—S1—C1	109.25 (8)	H9B—C9—H9C	109.5
O2—S1—C12	107.05 (8)	C6—C10—H10A	109.5
O3—S1—C12	107.32 (8)	C6—C10—H10B	109.5
C1—S1—C12	104.13 (8)	H10A—C10—H10B	109.5
C8—O1—C7	106.84 (13)	C6—C10—H10C	109.5
C8—C1—C2	107.71 (15)	H10A—C10—H10C	109.5
C8—C1—S1	127.28 (13)	H10B—C10—H10C	109.5
C2—C1—S1	124.96 (13)	C8—C11—H11A	109.5
C7—C2—C3	119.44 (15)	C8—C11—H11B	109.5
C7—C2—C1	104.41 (15)	H11A—C11—H11B	109.5
C3—C2—C1	136.15 (16)	C8—C11—H11C	109.5
C4—C3—C2	118.20 (16)	H11A—C11—H11C	109.5
C4—C3—H3	120.9	H11B—C11—H11C	109.5
C2—C3—H3	120.9	C17—C12—C13	121.80 (15)
C3—C4—C5	119.95 (16)	C17—C12—S1	119.06 (12)
C3—C4—C9	119.90 (17)	C13—C12—S1	119.14 (13)
C5—C4—C9	120.15 (17)	C14—C13—C12	119.07 (16)
C6—C5—C4	123.56 (16)	C14—C13—H13	120.5
C6—C5—H5	118.2	C12—C13—H13	120.5
C4—C5—H5	118.2	C15—C14—C13	120.09 (16)
C7—C6—C5	114.31 (16)	C15—C14—H14	120.0
C7—C6—C10	122.45 (17)	C13—C14—H14	120.0
C5—C6—C10	123.24 (17)	C16—C15—C14	119.46 (16)
C6—C7—O1	124.92 (16)	C16—C15—H15	120.3
C6—C7—C2	124.52 (16)	C14—C15—H15	120.3
O1—C7—C2	110.55 (14)	C15—C16—C17	122.10 (16)
C1—C8—O1	110.49 (14)	C15—C16—C11	118.76 (13)
C1—C8—C11	134.48 (17)	C17—C16—C11	119.14 (13)
O1—C8—C11	115.03 (15)	C16—C17—C12	117.46 (15)
C4—C9—H9A	109.5	C16—C17—H17	121.3
C4—C9—H9B	109.5	C12—C17—H17	121.3
H9A—C9—H9B	109.5		
O2—S1—C1—C8	-149.77 (15)	C1—C2—C7—C6	-179.53 (15)
O3—S1—C1—C8	-17.69 (18)	C3—C2—C7—O1	179.81 (14)
C12—S1—C1—C8	96.71 (17)	C1—C2—C7—O1	-0.22 (18)
O2—S1—C1—C2	33.36 (16)	C2—C1—C8—O1	-0.38 (19)
O3—S1—C1—C2	165.44 (13)	S1—C1—C8—O1	-177.69 (12)
C12—S1—C1—C2	-80.16 (15)	C2—C1—C8—C11	-179.72 (19)
C8—C1—C2—C7	0.36 (18)	S1—C1—C8—C11	3.0 (3)

S1—C1—C2—C7	177.75 (12)	C7—O1—C8—C1	0.25 (18)
C8—C1—C2—C3	-179.68 (18)	C7—O1—C8—C11	179.72 (15)
S1—C1—C2—C3	-2.3 (3)	O2—S1—C12—C17	-20.30 (15)
C7—C2—C3—C4	1.1 (2)	O3—S1—C12—C17	-150.40 (13)
C1—C2—C3—C4	-178.86 (17)	C1—S1—C12—C17	93.83 (14)
C2—C3—C4—C5	-1.6 (2)	O2—S1—C12—C13	159.90 (14)
C2—C3—C4—C9	177.74 (16)	O3—S1—C12—C13	29.80 (16)
C3—C4—C5—C6	0.5 (3)	C1—S1—C12—C13	-85.96 (15)
C9—C4—C5—C6	-178.82 (17)	C17—C12—C13—C14	1.5 (3)
C4—C5—C6—C7	1.0 (3)	S1—C12—C13—C14	-178.74 (14)
C4—C5—C6—C10	-178.55 (18)	C12—C13—C14—C15	-0.8 (3)
C5—C6—C7—O1	179.26 (15)	C13—C14—C15—C16	-0.5 (3)
C10—C6—C7—O1	-1.2 (3)	C14—C15—C16—C17	1.2 (3)
C5—C6—C7—C2	-1.5 (2)	C14—C15—C16—C11	-179.50 (15)
C10—C6—C7—C2	178.05 (17)	C15—C16—C17—C12	-0.6 (3)
C8—O1—C7—C6	179.31 (16)	C11—C16—C17—C12	-179.88 (13)
C8—O1—C7—C2	0.00 (18)	C13—C12—C17—C16	-0.8 (2)
C3—C2—C7—C6	0.5 (3)	S1—C12—C17—C16	179.45 (12)

Hydrogen-bond geometry (\AA , $^\circ$)

*Cg*1 and *Cg*2 are the centroids of the C1/C2/C7/O1/C8 furan ring and the C12-C17 benzene ring, respectively.

<i>D</i> —H... <i>A</i>	<i>D</i> —H	H... <i>A</i>	<i>D</i> ... <i>A</i>	<i>D</i> —H... <i>A</i>
C14—H14...O3 ⁱ	0.95	2.60	3.264 (2)	127
C10—H10 <i>A</i> ... <i>Cg</i> 2 ⁱⁱ	0.98	2.86	3.704 (2)	145
C10—H10 <i>C</i> ... <i>Cg</i> 1 ⁱⁱ	0.98	3.08	3.536 (2)	110

Symmetry codes: (i) $-x+1, -y+1, -z+2$; (ii) $x, -y+3/2, z-1/2$.