

Acta Crystallographica Section E

Structure Reports

Online

ISSN 1600-5368

2-[[Pyridin-2-yl]amino]methyl]phenol

 Shan Gao^a and Seik Weng Ng^{b,c*}

^aKey Laboratory of Functional Inorganic Materials Chemistry, Ministry of Education, Heilongjiang University, Harbin 150080, People's Republic of China, ^bDepartment of Chemistry, University of Malaya, 50603 Kuala Lumpur, Malaysia, and ^cChemistry Department, Faculty of Science, King Abdulaziz University, PO Box 80203, Jeddah, Saudi Arabia

Correspondence e-mail: seikweng@um.edu.my

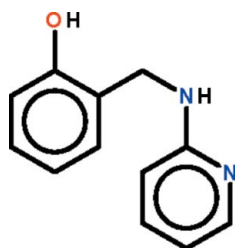
Received 25 June 2012; accepted 10 July 2012

Key indicators: single-crystal X-ray study; $T = 295$ K; mean $\sigma(\text{C}-\text{C}) = 0.004$ Å; R factor = 0.043; wR factor = 0.131; data-to-parameter ratio = 9.7.

The planes of the aromatic rings of the title compound, $\text{C}_{12}\text{H}_{12}\text{N}_2\text{O}$, are twisted by 50.33 (15)°. The phenol O atom is a hydrogen-bond donor to the pyridine N atom, resulting in the formation of an eight-membered ring in the molecule. The amino N atom is a hydrogen-bond donor to the phenol O atom of an adjacent molecule; this hydrogen bond leads to the formation of a helical chain that runs along the a axis.

Related literature

For the related compound 2-[[pyrazin-2-yl]amino]methyl]phenol, see: Gao & Ng (2012). For 2-[(pyridin-3-ylamino)methyl]phenol, see: Xu *et al.* (2011). For the metal adducts of 2-[(pyridin-2-ylamino)methyl]phenol, see: Yalçın *et al.* (2007).



Experimental

Crystal data

 $\text{C}_{12}\text{H}_{12}\text{N}_2\text{O}$
 $M_r = 200.24$

 Orthorhombic, $P2_12_12_1$
 $a = 6.3331$ (4) Å

 $b = 10.6761$ (9) Å

 $c = 15.3714$ (10) Å

 $V = 1039.30$ (13) Å³
 $Z = 4$

 Mo $K\alpha$ radiation

 $\mu = 0.08$ mm⁻¹
 $T = 295$ K

 $0.25 \times 0.19 \times 0.15$ mm

Data collection

Rigaku R-Axis RAPID IP

diffractometer

Absorption correction: multi-scan

(ABSCOR; Higashi, 1995)

 $T_{\min} = 0.979$, $T_{\max} = 0.988$

10221 measured reflections

1391 independent reflections

 887 reflections with $I > 2\sigma(I)$
 $R_{\text{int}} = 0.047$

Refinement

 $R[F^2 > 2\sigma(F^2)] = 0.043$
 $wR(F^2) = 0.131$
 $S = 1.04$

1391 reflections

144 parameters

2 restraints

H atoms treated by a mixture of independent and constrained refinement

 $\Delta\rho_{\text{max}} = 0.13$ e Å⁻³
 $\Delta\rho_{\text{min}} = -0.18$ e Å⁻³

Table 1

Hydrogen-bond geometry (Å, °).

$D-H\cdots A$	$D-H$	$H\cdots A$	$D\cdots A$	$D-H\cdots A$
$\text{O1}-\text{H1}\cdots\text{N1}$	0.85 (1)	1.83 (2)	2.658 (3)	166 (5)
$\text{N2}-\text{H2}\cdots\text{O1}^i$	0.88 (1)	2.06 (1)	2.928 (3)	172 (3)

 Symmetry code: (i) $x + 1, y, z$.

Data collection: *RAPID-AUTO* (Rigaku, 1998); cell refinement: *RAPID-AUTO*; data reduction: *CrystalClear* (Rigaku/MSK, 2002); program(s) used to solve structure: *SHELXS97* (Sheldrick, 2008); program(s) used to refine structure: *SHELXL97* (Sheldrick, 2008); molecular graphics: *X-SEED* (Barbour, 2001); software used to prepare material for publication: *publCIF* (Westrip, 2010).

We thank the Key Project of the Natural Science Foundation of Heilongjiang Province (grant No. ZD200903), the Key Project of the Education Bureau of Heilongjiang Province (grants No. 12511z023 and No. 2011CJHB006), the Innovation Team of the Education Bureau of Heilongjiang Province (grant No. 2010td03), Heilongjiang University (grant No. Hdt2010-04) and the Ministry of Higher Education of Malaysia (grant No. UM.C/HIR/MOHE/SC/12) for supporting this study.

Supplementary data and figures for this paper are available from the IUCr electronic archives (Reference: XU5581).

References

- Barbour, L. J. (2001). *J. Supramol. Chem.* **1**, 189–191.
 Gao, S. & Ng, S. W. (2012). *Acta Cryst.* **E68**, o2472.
 Higashi, T. (1995). *ABSCOR*. Rigaku Corporation, Tokyo, Japan.
 Rigaku (1998). *RAPID-AUTO*. Rigaku Corporation, Tokyo, Japan.
 Rigaku/MSK (2002). *CrystalClear*. Rigaku/MSK Inc., The Woodlands, Texas, USA.
 Sheldrick, G. M. (2008). *Acta Cryst.* **A64**, 112–122.
 Westrip, S. P. (2010). *J. Appl. Cryst.* **43**, 920–925.
 Xu, J., Gao, S. & Ng, S. W. (2011). *Acta Cryst.* **E67**, o3259.
 Yalçın, B., Fatullayeva, P. A., Büyükgüngör, O., Koşar, B., Taşcıoğlu, S., Israfilov, A. I., Ibayev, Z. D., Medjidov, A. A. & Aydın, A. (2007). *Polyhedron*, **26**, 3301–3309.

supporting information

Acta Cryst. (2012). E68, o2473 [https://doi.org/10.1107/S1600536812031340]

2-[[**(Pyridin-2-yl)amino**]methyl]phenol

Shan Gao and Seik Weng Ng

S1. Comment

Salicylaldehyde condenses with aromatic amines to yield Schiff bases, which serve as chelating ligands to a plethora of metal systems. These Schiff bases can be readily reduce to the corresponding secondary amines, which can also function as chelating ligands. Curiously, there are only few 2-(arylamino)methylphenols compared with the plethora of Schiff bases in the chemical literature. Among the aminopyridine derivatives, only the crystal structure of 2-((pyridin-3-yl-amino)methyl)phenol has been reported (Xu *et al.*, 2011). The 2-((pyridin-2-ylamino)methyl)phenol analog (Scheme I) has been described as its metal adducts only (Yalçın *et al.*, 2007).

The two aromatic rings of the reduced Schiff-base, C₁₂H₁₂N₂O, are twisted along the –CH₂–NH– single-bond by 50.3 (1)°. The hydroxy O atom is hydrogen-bond donor to the pyridyl N atom and an eight-membered ring is formed (Fig. 1). The slightly flattened secondary amino N atom is hydrogen-bond donor to the O atom of an adjacent molecule; this hydrogen bond leads to the formation of a helical chain that runs along the *a*-axis of the orthorhombic unit cell (Fig. 2, Table 1).

S2. Experimental

A solution of 2-aminopyridine (1 mmol) and salicylaldehyde (1 mmol) in toluene (50 ml) was heated for 10 h. The solvent was removed under vacuum, and the residue was reduced in absolute methanol by sodium borohydride. Light yellow crystals were obtained by recrystallization from methanol in 80% yield.

S3. Refinement

Carbon-bound H-atoms were placed in calculated positions (C–H 0.93 Å) and were included in the refinement in the riding model approximation, with *U*(H) set to 1.2*U*(C). The amino and hydroxy H-atoms were located in a difference Fourier map, and were refined with distance restraints N–H 0.88±0.01 Å and O–H 0.84±0.01 Å; their temperature factors were refined.

In the absence of heavy scatters, 980 Friedel pairs were merged.

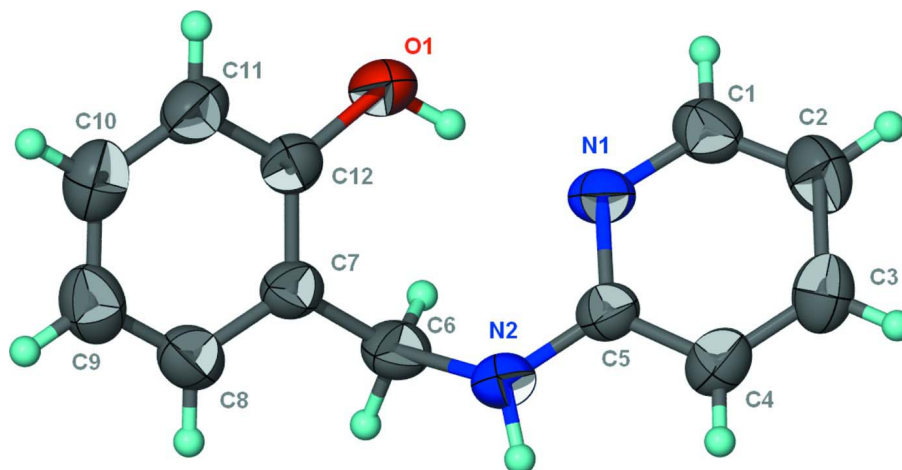


Figure 1

Thermal ellipsoid plot (Barbour, 2001) of C₁₂H₁₂N₂O at the 50% probability level; hydrogen atoms are drawn as spheres of arbitrary radius.

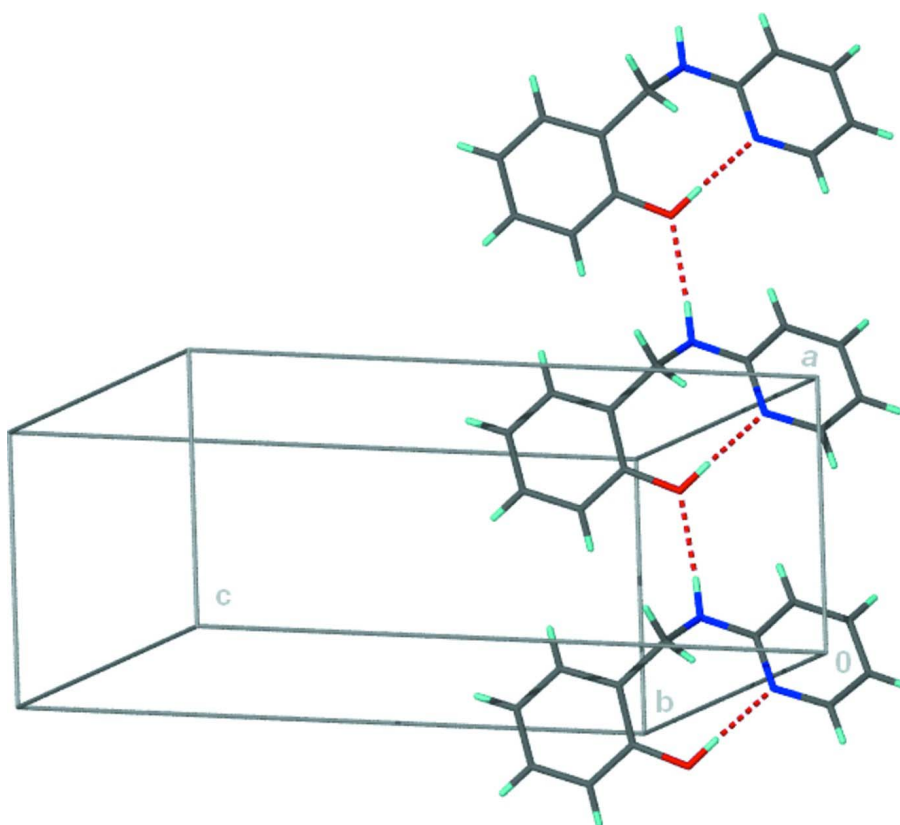


Figure 2

Hydrogen-bonded chain motif.

2-[[Pyridin-2-yl]amino]methyl]phenol

Crystal data

C₁₂H₁₂N₂O $M_r = 200.24$ Orthorhombic, $P2_12_12_1$

Hall symbol: P 2ac 2ab

 $a = 6.3331$ (4) Å $b = 10.6761$ (9) Å $c = 15.3714$ (10) Å $V = 1039.30$ (13) Å³ $Z = 4$ $F(000) = 424$ $D_x = 1.280$ Mg m⁻³Mo $K\alpha$ radiation, $\lambda = 0.71073$ Å

Cell parameters from 6231 reflections

 $\theta = 3.3$ – 27.4° $\mu = 0.08$ mm⁻¹ $T = 295$ K

Prism, faint yellow

 $0.25 \times 0.19 \times 0.15$ mm

Data collection

Rigaku R-AXIS RAPID IP

diffractometer

Radiation source: fine-focus sealed tube

Graphite monochromator

 ω scan

Absorption correction: multi-scan

(ABSCOR; Higashi, 1995)

 $T_{\min} = 0.979$, $T_{\max} = 0.988$

10221 measured reflections

1391 independent reflections

887 reflections with $I > 2\sigma(I)$ $R_{\text{int}} = 0.047$ $\theta_{\max} = 27.4^\circ$, $\theta_{\min} = 3.3^\circ$ $h = -8 \rightarrow 8$ $k = -13 \rightarrow 13$ $l = -19 \rightarrow 19$

Refinement

Refinement on F^2

Least-squares matrix: full

 $R[F^2 > 2\sigma(F^2)] = 0.043$ $wR(F^2) = 0.131$ $S = 1.04$

1391 reflections

144 parameters

2 restraints

Primary atom site location: structure-invariant

direct methods

Secondary atom site location: difference Fourier map

Hydrogen site location: inferred from neighbouring sites

H atoms treated by a mixture of independent and constrained refinement

 $w = 1/[\sigma^2(F_o^2) + (0.0773P)^2]$ where $P = (F_o^2 + 2F_c^2)/3$ $(\Delta/\sigma)_{\max} = 0.001$ $\Delta\rho_{\max} = 0.13$ e Å⁻³ $\Delta\rho_{\min} = -0.18$ e Å⁻³Fractional atomic coordinates and isotropic or equivalent isotropic displacement parameters (Å²)

	<i>x</i>	<i>y</i>	<i>z</i>	$U_{\text{iso}}^*/U_{\text{eq}}$
O1	0.6052 (3)	0.1233 (2)	0.18887 (14)	0.0752 (7)
N1	0.8839 (3)	0.0670 (2)	0.06566 (14)	0.0570 (6)
N2	1.1470 (4)	0.1185 (3)	0.16368 (15)	0.0672 (8)
C1	0.8251 (6)	0.0489 (3)	-0.01804 (18)	0.0672 (8)
H1A	0.6882	0.0212	-0.0286	0.081*
C2	0.9537 (6)	0.0687 (3)	-0.0877 (2)	0.0762 (9)
H2A	0.9069	0.0534	-0.1441	0.091*
C3	1.1575 (6)	0.1126 (3)	-0.0720 (2)	0.0706 (9)
H3	1.2483	0.1294	-0.1181	0.085*
C4	1.2220 (5)	0.1305 (3)	0.01124 (19)	0.0636 (8)
H4	1.3573	0.1600	0.0227	0.076*
C5	1.0823 (4)	0.1041 (3)	0.08020 (17)	0.0542 (7)
C6	1.0371 (5)	0.0617 (3)	0.23756 (18)	0.0652 (8)

H6A	1.1414	0.0269	0.2769	0.078*
H6B	0.9513	-0.0071	0.2163	0.078*
C7	0.8978 (4)	0.1498 (3)	0.28793 (17)	0.0564 (7)
C8	0.9675 (5)	0.2047 (3)	0.36466 (18)	0.0672 (9)
H8	1.1032	0.1872	0.3843	0.081*
C9	0.8415 (6)	0.2848 (3)	0.4129 (2)	0.0761 (9)
H9	0.8911	0.3193	0.4645	0.091*
C10	0.6432 (6)	0.3126 (3)	0.3835 (2)	0.0763 (10)
H10	0.5583	0.3673	0.4150	0.092*
C11	0.5680 (5)	0.2601 (3)	0.30782 (18)	0.0692 (8)
H11	0.4334	0.2801	0.2881	0.083*
C12	0.6935 (4)	0.1769 (3)	0.26072 (17)	0.0567 (7)
H1	0.694 (5)	0.093 (4)	0.153 (2)	0.119 (17)*
H2	1.2851 (18)	0.126 (4)	0.167 (2)	0.092 (11)*

Atomic displacement parameters (Å²)

	U^{11}	U^{22}	U^{33}	U^{12}	U^{13}	U^{23}
O1	0.0449 (10)	0.1083 (19)	0.0723 (13)	-0.0019 (12)	-0.0022 (11)	-0.0175 (13)
N1	0.0441 (11)	0.0614 (15)	0.0655 (13)	0.0003 (11)	-0.0053 (11)	-0.0049 (11)
N2	0.0426 (12)	0.099 (2)	0.0599 (14)	-0.0044 (13)	-0.0005 (11)	-0.0014 (13)
C1	0.0658 (18)	0.068 (2)	0.0680 (18)	-0.0014 (15)	-0.0109 (16)	-0.0112 (15)
C2	0.094 (2)	0.073 (2)	0.0620 (16)	-0.001 (2)	-0.0054 (19)	-0.0145 (16)
C3	0.084 (2)	0.064 (2)	0.0638 (18)	0.0032 (17)	0.0141 (16)	-0.0084 (14)
C4	0.0585 (16)	0.0609 (19)	0.0715 (19)	-0.0017 (15)	0.0113 (15)	-0.0067 (14)
C5	0.0471 (14)	0.0553 (17)	0.0601 (14)	0.0020 (13)	0.0012 (13)	-0.0030 (13)
C6	0.0544 (15)	0.078 (2)	0.0634 (16)	0.0060 (15)	-0.0075 (14)	0.0105 (15)
C7	0.0471 (14)	0.0667 (19)	0.0555 (14)	-0.0064 (13)	0.0017 (13)	0.0094 (13)
C8	0.0610 (17)	0.082 (2)	0.0581 (15)	-0.0153 (17)	-0.0026 (15)	0.0086 (15)
C9	0.090 (2)	0.077 (2)	0.0616 (16)	-0.022 (2)	0.0027 (18)	-0.0032 (17)
C10	0.087 (2)	0.071 (2)	0.0709 (18)	-0.0049 (19)	0.0184 (18)	-0.0051 (16)
C11	0.0581 (16)	0.078 (2)	0.0713 (17)	0.0046 (17)	0.0107 (15)	0.0055 (17)
C12	0.0497 (14)	0.0644 (19)	0.0561 (15)	-0.0075 (13)	0.0031 (13)	-0.0002 (13)

Geometric parameters (Å, °)

O1—C12	1.364 (3)	C4—H4	0.9300
O1—H1	0.851 (10)	C6—C7	1.504 (4)
N1—C5	1.336 (4)	C6—H6A	0.9700
N1—C1	1.353 (3)	C6—H6B	0.9700
N2—C5	1.356 (3)	C7—C8	1.389 (4)
N2—C6	1.464 (4)	C7—C12	1.390 (4)
N2—H2	0.879 (10)	C8—C9	1.384 (5)
C1—C2	1.362 (5)	C8—H8	0.9300
C1—H1A	0.9300	C9—C10	1.367 (5)
C2—C3	1.395 (5)	C9—H9	0.9300
C2—H2A	0.9300	C10—C11	1.377 (4)
C3—C4	1.357 (4)	C10—H10	0.9300

C3—H3	0.9300	C11—C12	1.394 (4)
C4—C5	1.409 (4)	C11—H11	0.9300
C12—O1—H1	114 (3)	C7—C6—H6A	108.6
C5—N1—C1	117.4 (3)	N2—C6—H6B	108.6
C5—N2—C6	122.9 (3)	C7—C6—H6B	108.6
C5—N2—H2	111 (2)	H6A—C6—H6B	107.5
C6—N2—H2	118 (2)	C8—C7—C12	117.6 (3)
N1—C1—C2	124.1 (3)	C8—C7—C6	121.0 (3)
N1—C1—H1A	118.0	C12—C7—C6	121.4 (3)
C2—C1—H1A	118.0	C9—C8—C7	122.1 (3)
C1—C2—C3	118.0 (3)	C9—C8—H8	118.9
C1—C2—H2A	121.0	C7—C8—H8	118.9
C3—C2—H2A	121.0	C10—C9—C8	119.1 (3)
C4—C3—C2	119.3 (3)	C10—C9—H9	120.4
C4—C3—H3	120.4	C8—C9—H9	120.4
C2—C3—H3	120.4	C9—C10—C11	120.5 (3)
C3—C4—C5	119.5 (3)	C9—C10—H10	119.7
C3—C4—H4	120.2	C11—C10—H10	119.7
C5—C4—H4	120.2	C10—C11—C12	120.1 (3)
N1—C5—N2	118.4 (2)	C10—C11—H11	120.0
N1—C5—C4	121.6 (3)	C12—C11—H11	120.0
N2—C5—C4	120.0 (2)	O1—C12—C7	122.5 (3)
N2—C6—C7	114.8 (3)	O1—C12—C11	117.0 (3)
N2—C6—H6A	108.6	C7—C12—C11	120.5 (3)
C5—N1—C1—C2	-1.4 (5)	N2—C6—C7—C12	82.9 (4)
N1—C1—C2—C3	-1.3 (5)	C12—C7—C8—C9	-0.6 (4)
C1—C2—C3—C4	1.8 (5)	C6—C7—C8—C9	-179.1 (3)
C2—C3—C4—C5	0.2 (5)	C7—C8—C9—C10	-1.1 (5)
C1—N1—C5—N2	-177.7 (3)	C8—C9—C10—C11	1.1 (5)
C1—N1—C5—C4	3.6 (4)	C9—C10—C11—C12	0.6 (5)
C6—N2—C5—N1	18.7 (5)	C8—C7—C12—O1	-176.6 (3)
C6—N2—C5—C4	-162.5 (3)	C6—C7—C12—O1	1.9 (4)
C3—C4—C5—N1	-3.0 (5)	C8—C7—C12—C11	2.3 (4)
C3—C4—C5—N2	178.2 (3)	C6—C7—C12—C11	-179.2 (3)
C5—N2—C6—C7	-101.6 (3)	C10—C11—C12—O1	176.6 (3)
N2—C6—C7—C8	-98.6 (3)	C10—C11—C12—C7	-2.3 (4)

Hydrogen-bond geometry (\AA , $^\circ$)

$D-H\cdots A$	$D-H$	$H\cdots A$	$D\cdots A$	$D-H\cdots A$
O1—H1 \cdots N1	0.85 (1)	1.83 (2)	2.658 (3)	166 (5)
N2—H2 \cdots O1 ⁱ	0.88 (1)	2.06 (1)	2.928 (3)	172 (3)

Symmetry code: (i) $x+1, y, z$.