

Acta Crystallographica Section E

Structure Reports

Online

ISSN 1600-5368

9,10-Diiodophenanthrene

Ruri Yokota, Chitoshi Kitamura* and Takeshi Kawase

 Department of Materials Science and Chemistry, Graduate School of Engineering,
 University of Hyogo, 2167 Shosha, Himeji, Hyogo 671-2280, Japan
 Correspondence e-mail: kitamura@eng.u-hyogo.ac.jp

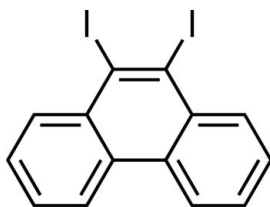
Received 10 October 2012; accepted 5 November 2012

 Key indicators: single-crystal X-ray study; $T = 223$ K; mean $\sigma(\text{C}-\text{C}) = 0.008$ Å;
 R factor = 0.033; wR factor = 0.083; data-to-parameter ratio = 18.4.

The whole molecule of the title compound, $\text{C}_{14}\text{H}_8\text{I}_2$, is generated by crystallographic twofold symmetry. The molecule is planar [maximum deviation = 0.0323 (6) Å] with the I atoms displaced from the mean plane of the phenanthrene ring system by only 0.0254 (5) Å. In the crystal, molecules form face-to-face slipped antiparallel π - π stacking interactions along the c axis with an interplanar distance of 3.499 (7) Å.

Related literature

For the synthesis of the title compound, see: Rodríguez-Lojo *et al.* (2012). For a related structure, see: Yokota *et al.* (2012).



Experimental

Crystal data

 $\text{C}_{14}\text{H}_8\text{I}_2$
 $M_r = 430$

 Monoclinic, $C2/c$
 $a = 18.094$ (2) Å
 $b = 9.4557$ (14) Å
 $c = 7.4187$ (10) Å
 $\beta = 111.953$ (3)°
 $V = 1177.2$ (3) Å³
 $Z = 4$
 Mo $K\alpha$ radiation
 $\mu = 5.31$ mm⁻¹
 $T = 223$ K
 $0.52 \times 0.08 \times 0.05$ mm

Data collection

 Rigaku R-AXIS RAPID
 diffractometer
 Absorption correction: numerical
 (NUMABS; Higashi, 1999)
 $T_{\min} = 0.388$, $T_{\max} = 0.869$

 5595 measured reflections
 1345 independent reflections
 1077 reflections with $I > 2\sigma(I)$
 $R_{\text{int}} = 0.030$

Refinement

 $R[F^2 > 2\sigma(F^2)] = 0.033$
 $wR(F^2) = 0.083$
 $S = 1.12$
 1345 reflections

 73 parameters
 H-atom parameters constrained
 $\Delta\rho_{\max} = 0.92$ e Å⁻³
 $\Delta\rho_{\min} = -0.92$ e Å⁻³

Data collection: *RAPID-AUTO* (Rigaku, 1999); cell refinement: *PROCESS-AUTO* (Rigaku, 1998); data reduction: *PROCESS-AUTO*; program(s) used to solve structure: *SIR2004* (Burla *et al.*, 2005); program(s) used to refine structure: *SHELXL97* (Sheldrick, 2008); molecular graphics: *ORTEP-3 for Windows* (Farrugia, 1997); software used to prepare material for publication: *WinGX* (Farrugia, 1999).

This work was supported by Grants-in-Aid for Scientific Research from the JSPS and MEXT.

Supplementary data and figures for this paper are available from the IUCr electronic archives (Reference: JJ2155).

References

- Burla, M. C., Caliandro, R., Camalli, M., Carrozzini, B., Cascarano, G. L., De Caro, L., Giacovazzo, C., Polidori, G. & Spagna, R. (2005). *J. Appl. Cryst.* **38**, 381–388.
- Farrugia, L. J. (1997). *J. Appl. Cryst.* **30**, 565.
- Farrugia, L. J. (1999). *J. Appl. Cryst.* **32**, 837–838.
- Higashi, T. (1999). *NUMABS*. Rigaku Corporation, Tokyo, Japan.
- Rigaku (1998). *PROCESS-AUTO*. Rigaku Corporation, Tokyo, Japan.
- Rigaku (1999). *RAPID-AUTO*. Rigaku Corporation, Tokyo, Japan.
- Rodríguez-Lojo, D., Cobas, A., Peña, D., Pérez, D. & Guitián, E. (2012). *Org. Lett.* **14**, 1363–1365.
- Sheldrick, G. M. (2008). *Acta Cryst.* **A64**, 112–122.
- Yokota, R., Kitamura, C. & Kawase, T. (2012). *Acta Cryst.* **E68**, o3174.

supporting information

Acta Cryst. (2012). E68, o3323 [doi:10.1107/S1600536812045758]

9,10-Diiodophenanthrene

Ruri Yokota, Chitoshi Kitamura and Takeshi Kawase

S1. Comment

o-Diiodoarenes are valuable synthetic intermediates. We were able to obtain suitable single crystals of 9,10-diiodophenanthrene, the title compound, by the recently published synthetic method of Rodríguez-Lojo *et al.* (2012). We report herein the crystal structure of C₁₄H₈I₂, the title compound.

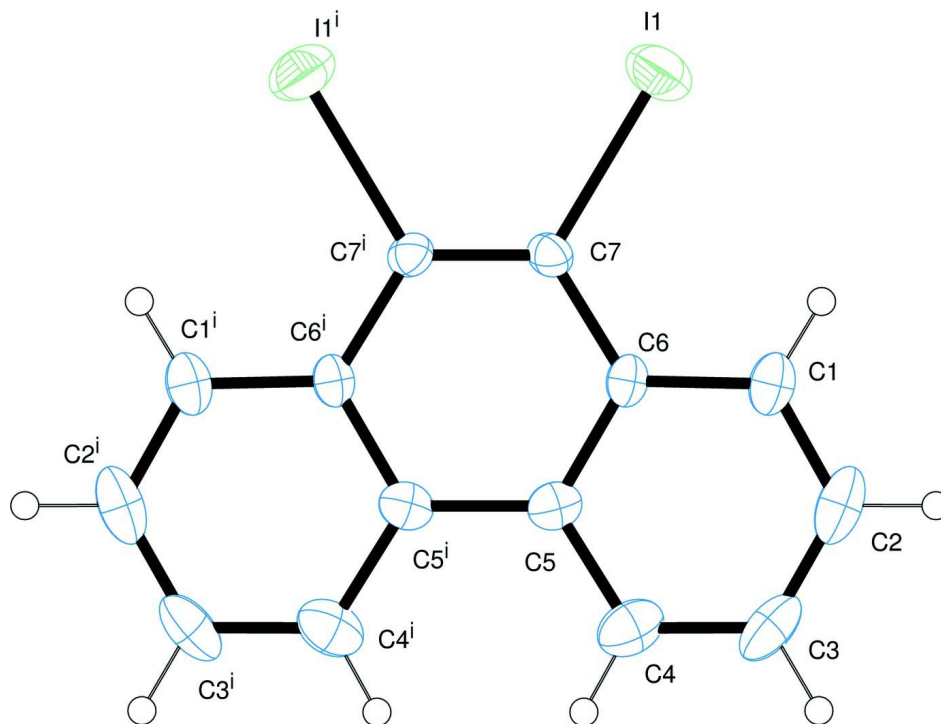
In the molecular structure of the title compound, (I), the mean plane of the arene ring displays a maximum deviation of 0.0323 (6) Å for I1 (Fig. 1). The molecule possesses C₂ symmetry, and half of the formula unit is crystallographically independent. Bonds lengths and angles are in good agreement with the standard values. Crystal packing is stabilized by face-to-face, slipped, antiparallel, π - π stacking along the direction of the *c* axis with an interplanar distance of 3.499 (7) Å (Fig. 2). Very recently, we have reported the crystal structure of 9,10-dibromophenanthrene (Yokota *et al.*, 2012), the bromine analog of (I), which displays a similar packing arrangement.

S2. Experimental

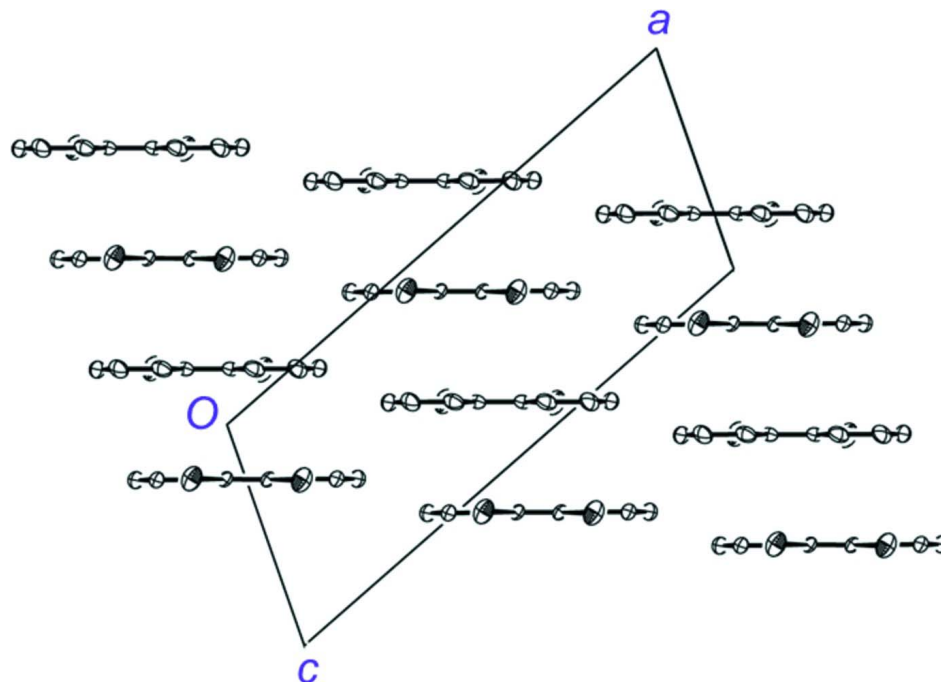
The title compound was prepared according to the literature method (Rodríguez-Lojo *et al.*, 2012) Single crystals suitable for X-ray analysis were obtained from a toluene-hexane solution.

S3. Refinement

All the aromatic H atoms were positioned geometrically and refined using a riding model with C—H = 0.94 Å and $U_{\text{iso}}(\text{H}) = 1.2U_{\text{eq}}(\text{C})$.

**Figure 1**

The molecular structure of the title compound, showing the atomic numbering and 40% probability displacement ellipsoids. Symmetry code: (i) $-x + 1, y, -z + 1.5$.

**Figure 2**

The packing diagram of the title compound viewed along the b axis. Hydrogen atoms have been omitted for clarity.

9,10-diiodophenanthrene

Crystal data

C₁₄H₈I₂ $M_r = 430$ Monoclinic, *C*2/*c*Hall symbol: -*C* 2yc $a = 18.094 (2) \text{ \AA}$ $b = 9.4557 (14) \text{ \AA}$ $c = 7.4187 (10) \text{ \AA}$ $\beta = 111.953 (3)^\circ$ $V = 1177.2 (3) \text{ \AA}^3$ $Z = 4$ $F(000) = 792$ $D_x = 2.426 \text{ Mg m}^{-3}$ Mo *K* α radiation, $\lambda = 0.71073 \text{ \AA}$

Cell parameters from 3465 reflections

 $\theta = 3.1\text{--}27.5^\circ$ $\mu = 5.31 \text{ mm}^{-1}$ $T = 223 \text{ K}$

Needle, colorless

 $0.52 \times 0.08 \times 0.05 \text{ mm}$

Data collection

Rigaku R-AXIS RAPID

diffractometer

Radiation source: fine-focus sealed x-ray tube

Graphite monochromator

Detector resolution: 10 pixels mm^{-1} ω scans

Absorption correction: numerical

(NUMABS; Higashi, 1999)

 $T_{\min} = 0.388$, $T_{\max} = 0.869$

5595 measured reflections

1345 independent reflections

1077 reflections with $I > 2\sigma(I)$ $R_{\text{int}} = 0.030$ $\theta_{\max} = 27.5^\circ$, $\theta_{\min} = 3.5^\circ$ $h = -23 \rightarrow 22$ $k = -12 \rightarrow 12$ $l = -8 \rightarrow 9$

Refinement

Refinement on F^2

Least-squares matrix: full

 $R[F^2 > 2\sigma(F^2)] = 0.033$ $wR(F^2) = 0.083$ $S = 1.12$

1345 reflections

73 parameters

0 restraints

Primary atom site location: structure-invariant

direct methods

Hydrogen site location: inferred from

neighbouring sites

H-atom parameters constrained

 $w = 1/[\sigma^2(F_o^2) + (0.0077P)^2 + 13.1956P]$ where $P = (F_o^2 + 2F_c^2)/3$ $(\Delta/\sigma)_{\max} < 0.001$ $\Delta\rho_{\max} = 0.92 \text{ e \AA}^{-3}$ $\Delta\rho_{\min} = -0.92 \text{ e \AA}^{-3}$

Special details

Geometry. All s.u.'s (except the s.u. in the dihedral angle between two l.s. planes) are estimated using the full covariance matrix. The cell s.u.'s are taken into account individually in the estimation of s.u.'s in distances, angles and torsion angles; correlations between s.u.'s in cell parameters are only used when they are defined by crystal symmetry. An approximate (isotropic) treatment of cell s.u.'s is used for estimating s.u.'s involving l.s. planes.

Refinement. Refinement of F^2 against ALL reflections. The weighted R -factor wR and goodness of fit S are based on F^2 , conventional R -factors R are based on F , with F set to zero for negative F^2 . The threshold expression of $F^2 > 2\sigma(F^2)$ is used only for calculating R -factors(gt) *etc.* and is not relevant to the choice of reflections for refinement. R -factors based on F^2 are statistically about twice as large as those based on F , and R -factors based on ALL data will be even larger.

Fractional atomic coordinates and isotropic or equivalent isotropic displacement parameters (\AA^2)

	<i>x</i>	<i>y</i>	<i>z</i>	$U_{\text{iso}}^*/U_{\text{eq}}$
C1	0.3399 (3)	0.4417 (6)	0.4793 (7)	0.0368 (12)
H1	0.3127	0.3564	0.4332	0.044*
C2	0.3020 (3)	0.5667 (8)	0.4155 (8)	0.0470 (15)
H2	0.2488	0.5669	0.3275	0.056*

C3	0.3408 (3)	0.6927 (7)	0.4781 (9)	0.0467 (15)
H3	0.3146	0.7786	0.4306	0.056*
C4	0.4171 (4)	0.6931 (6)	0.6089 (8)	0.0424 (13)
H4	0.4426	0.78	0.6529	0.051*
C5	0.4587 (3)	0.5675 (5)	0.6798 (7)	0.0289 (10)
C6	0.4192 (3)	0.4383 (5)	0.6137 (7)	0.0261 (9)
C7	0.4618 (3)	0.3079 (5)	0.6846 (7)	0.0281 (10)
I1	0.40244 (3)	0.11933 (4)	0.58098 (7)	0.05783 (18)

Atomic displacement parameters (Å²)

	U^{11}	U^{22}	U^{33}	U^{12}	U^{13}	U^{23}
C1	0.029 (2)	0.051 (3)	0.029 (3)	0.003 (2)	0.008 (2)	0.001 (2)
C2	0.026 (3)	0.078 (4)	0.034 (3)	0.012 (3)	0.007 (2)	0.010 (3)
C3	0.038 (3)	0.057 (4)	0.048 (3)	0.024 (3)	0.019 (3)	0.020 (3)
C4	0.048 (3)	0.040 (3)	0.048 (3)	0.012 (2)	0.028 (3)	0.008 (3)
C5	0.030 (2)	0.030 (2)	0.031 (3)	0.0021 (19)	0.017 (2)	0.0012 (19)
C6	0.023 (2)	0.035 (2)	0.024 (2)	0.0010 (18)	0.0126 (18)	0.0001 (18)
C7	0.033 (2)	0.026 (2)	0.025 (2)	-0.0029 (18)	0.010 (2)	-0.0020 (18)
I1	0.0670 (3)	0.0402 (2)	0.0526 (3)	-0.01527 (19)	0.0067 (2)	-0.00726 (18)

Geometric parameters (Å, °)

C1—C2	1.359 (8)	C4—C5	1.399 (7)
C1—C6	1.409 (7)	C4—H4	0.94
C1—H1	0.94	C5—C6	1.408 (7)
C2—C3	1.372 (9)	C5—C5 ⁱ	1.467 (10)
C2—H2	0.94	C6—C7	1.445 (6)
C3—C4	1.359 (8)	C7—C7 ⁱ	1.360 (9)
C3—H3	0.94	C7—I1	2.075 (5)
C2—C1—C6	120.9 (5)	C5—C4—H4	119.1
C2—C1—H1	119.6	C4—C5—C6	118.2 (5)
C6—C1—H1	119.6	C4—C5—C5 ⁱ	121.9 (3)
C1—C2—C3	120.7 (5)	C6—C5—C5 ⁱ	119.8 (3)
C1—C2—H2	119.7	C5—C6—C1	118.5 (5)
C3—C2—H2	119.7	C5—C6—C7	118.7 (4)
C4—C3—C2	119.9 (5)	C1—C6—C7	122.8 (5)
C4—C3—H3	120.1	C7 ⁱ —C7—C6	121.5 (3)
C2—C3—H3	120.1	C7 ⁱ —C7—I1	120.77 (13)
C3—C4—C5	121.8 (6)	C6—C7—I1	117.8 (3)
C3—C4—H4	119.1		
C6—C1—C2—C3	1.1 (8)	C5 ⁱ —C5—C6—C7	-0.9 (8)
C1—C2—C3—C4	-1.6 (9)	C2—C1—C6—C5	-0.4 (7)
C2—C3—C4—C5	1.4 (9)	C2—C1—C6—C7	-179.6 (5)
C3—C4—C5—C6	-0.7 (8)	C5—C6—C7—C7 ⁱ	1.2 (8)
C3—C4—C5—C5 ⁱ	179.7 (6)	C1—C6—C7—C7 ⁱ	-179.6 (6)

C4—C5—C6—C1	0.2 (7)	C5—C6—C7—I1	-179.0 (3)
C5 ⁱ —C5—C6—C1	179.8 (5)	C1—C6—C7—I1	0.2 (6)
C4—C5—C6—C7	179.5 (5)		

Symmetry code: (i) $-x+1, y, -z+3/2$.