

## 4-[(4-Methylphenyl)sulfanyl]butan-2-one

Sladjana B. Novaković,<sup>a</sup> Zorica Leka,<sup>b\*</sup> Dragana Stevanović,<sup>c</sup> Jovana Muškinja<sup>c</sup> and Goran A. Bogdanović<sup>a</sup>

<sup>a</sup>Vinča Institute of Nuclear Sciences, Laboratory of Theoretical Physics and Condensed Matter Physics, PO Box 522, University of Belgrade, 11001 Belgrade, Serbia, <sup>b</sup>Faculty of Metallurgy and Technology, University of Montenegro, Cetinjski put bb, 81000 Podgorica, Montenegro, and <sup>c</sup>Faculty of Sciences, Department of Chemistry, University of Kragujevac, R. Domanovića 12, 34000 Kragujevac, Serbia  
Correspondence e-mail: zorica@ac.me

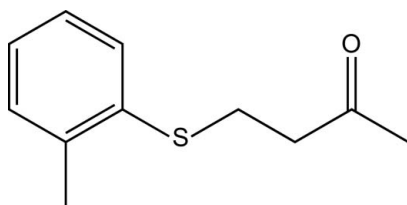
Received 24 September 2013; accepted 30 September 2013

Key indicators: single-crystal X-ray study;  $T = 293$  K; mean  $\sigma(\text{C}-\text{C}) = 0.003$  Å;  $R$  factor = 0.055;  $wR$  factor = 0.170; data-to-parameter ratio = 17.1.

In the title compound,  $\text{C}_{11}\text{H}_{14}\text{OS}$ , all non-H atoms are essentially coplanar, with a mean deviation of 0.023 Å. In the crystal, centrosymmetrically related molecules are weakly connected into dimers by pairs of  $\text{C}-\text{H}\cdots\text{O}$  interactions. The dimers are further linked along the  $a$  axis by weak  $\text{C}-\text{H}\cdots\pi$  and  $\text{C}-\text{H}\cdots\text{S}$  interactions.

### Related literature

For the physico-chemical properties of organosulfur compounds, see: Page (1999). For the synthetic procedure, see: Stevanović *et al.* (2012). For the role of sulfur in hydrogen bonding, see: Francuski *et al.* (2011).



### Experimental

#### Crystal data

$\text{C}_{11}\text{H}_{14}\text{OS}$   
 $M_r = 194.28$   
Triclinic,  $P\bar{1}$   
 $a = 7.2703$  (11) Å  
 $b = 7.3226$  (7) Å  
 $c = 11.7615$  (11) Å

$\alpha = 88.232$  (8)°  
 $\beta = 79.343$  (10)°  
 $\gamma = 61.350$  (13)°  
 $V = 538.80$  (13) Å<sup>3</sup>  
 $Z = 2$   
Cu  $K\alpha$  radiation

$\mu = 2.33$  mm<sup>-1</sup>  
 $T = 293$  K

0.50 × 0.26 × 0.14 mm

#### Data collection

Agilent Gemini S diffractometer  
Absorption correction: multi-scan  
(*CrysAlis PRO*; Agilent, 2013)  
 $T_{\text{min}} = 0.444$ ,  $T_{\text{max}} = 1.000$

3254 measured reflections  
2052 independent reflections  
1731 reflections with  $I > 2\sigma(I)$   
 $R_{\text{int}} = 0.027$

#### Refinement

$R[F^2 > 2\sigma(F^2)] = 0.055$   
 $wR(F^2) = 0.170$   
 $S = 1.07$   
2052 reflections

120 parameters  
H-atom parameters constrained  
 $\Delta\rho_{\text{max}} = 0.34$  e Å<sup>-3</sup>  
 $\Delta\rho_{\text{min}} = -0.33$  e Å<sup>-3</sup>

**Table 1**

Hydrogen-bond geometry (Å, °).

$C_g$  is the centroid of the C4–C9 phenyl ring.

$D-H\cdots A$	$D-H$	$H\cdots A$	$D\cdots A$	$D-H\cdots A$
$\text{C10}-\text{H10c}\cdots\text{O1}^i$	0.96	2.67	3.579 (4)	158
$\text{C3}-\text{H3a}\cdots\text{S1}^{ii}$	0.97	2.99	3.855 (3)	149
$\text{C3}-\text{H3b}\cdots\text{S1}^{iii}$	0.97	3.02	3.870 (3)	147
$\text{C2}-\text{H2a}\cdots\text{Cg}^{iv}$	0.97	2.86	3.628 (4)	137
$\text{C2}-\text{H2b}\cdots\text{Cg}^{iv}$	0.97	2.95	3.678 (4)	133

Symmetry codes: (i)  $-x+1, -y, -z-1$ ; (ii)  $-x, -y, -z$ ; (iii)  $-x+1, -y, -z$ ; (iv)  $-x+1, -y+1, -z+1$ .

Data collection: *CrysAlis PRO* (Agilent, 2013); cell refinement: *CrysAlis PRO*; data reduction: *CrysAlis PRO*; program(s) used to solve structure: *SHELXS97* (Sheldrick, 2008); program(s) used to refine structure: *SHELXL97* (Sheldrick, 2008); molecular graphics: *ORTEP-3* (Farrugia, 2012) and *Mercury* (Macrae *et al.*, 2006); software used to prepare material for publication: *WinGX* (Farrugia, 2012), *PLATON* (Spek, 2009) and *PARST* (Nardelli, 1995).

This work was supported by the Ministry of Education, Science and Technological Development of the Republic of Serbia (Projects No. 172014, 172035 and 172034).

Supplementary data and figures for this paper are available from the IUCr electronic archives (Reference: RZ5084).

### References

- Agilent (2013). *CrysAlis PRO*. Agilent Technologies Inc., Santa Clara, CA, USA.  
Farrugia, L. J. (2012). *J. Appl. Cryst.* **45**, 849–854.  
Francuski, B. M., Novaković, S. B. & Bogdanović, G. A. (2011). *CrystEngComm*, **13**, 3580–3591.  
Macrae, C. F., Edgington, P. R., McCabe, P., Pidcock, E., Shields, G. P., Taylor, R., Towler, M. & van de Streek, J. (2006). *J. Appl. Cryst.* **39**, 453–457.  
Nardelli, M. (1995). *J. Appl. Cryst.* **28**, 659.  
Page, P. C. B. (1999). Editor. *Organosulfur Chemistry*, Vols. 1–2. Berlin: Springer.  
Sheldrick, G. M. (2008). *Acta Cryst.* **A64**, 112–122.  
Spek, A. L. (2009). *Acta Cryst.* **D65**, 148–155.  
Stevanović, D., Pejović, A., Damljanović, I., Vukićević, M., Bogdanović, G. A. & Vukićević, R. D. (2012). *Tetrahedron Lett.* **53**, 6257–6260.

## supporting information

*Acta Cryst.* (2013). E69, o1625 [doi:10.1107/S1600536813026895]

## 4-[(4-Methylphenyl)sulfanyl]butan-2-one

**Sladjana B. Novaković, Zorica Leka, Dragana Stevanović, Jovana Muškinja and Goran A. Bogdanović**

### S1. Comment

Sulfides containing a carbonyl group are versatile precursors for the synthesis of wide range of biologically interesting compounds (Page, 1999). The main approach to  $\beta$ -thiaketones is the addition of compounds containing an SH group to conjugated carbonyls (the thia-Michael reaction). We recently published a versatile method for electrochemical generation of the catalyst for this addition (Stevanović *et al.*, 2012) and herein we report the structure of 4-(*o*-tolylthio)-butan-2-one.

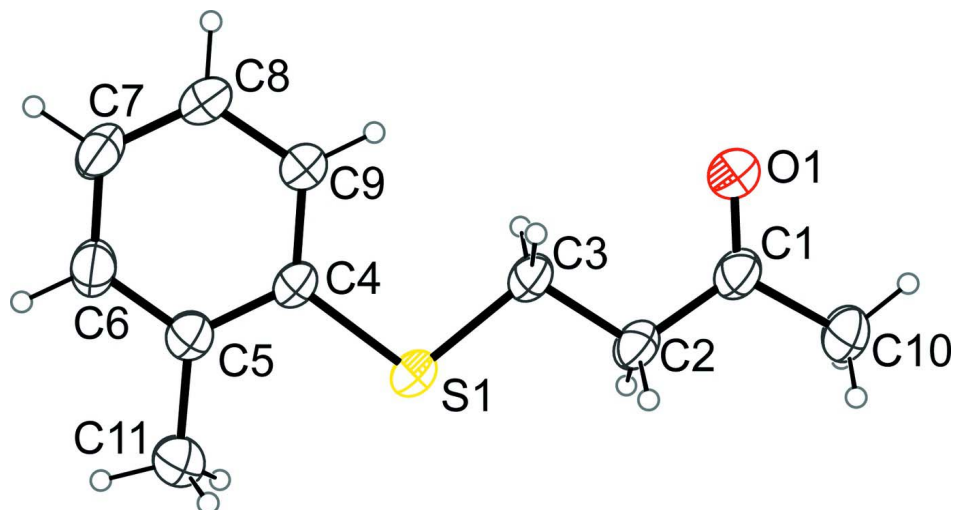
The molecule of the title compound (Fig. 1) is essentially planar with a mean deviation of all non-H atoms of 0.023 Å. Atoms O1 and C10 exhibit the highest deviation from the mean molecular plane of 0.047 (3) and -0.057 (2) Å, respectively. The crystal packing displays no classical hydrogen bonding. The carbonyl O1 acceptor is engaged only in a weak C10—H10 $c$ ...O1 interaction (Table 1) which associates the centrosymmetric molecules into dimers (Fig. 2a). Pairs of C—H... $\pi$  and C—H...S interactions (Table 1) connect the molecules along the *a* axis (Figure 2b). In the absence of more relevant hydrogen bonding the weak C—H...S interactions can be considered important for the stabilization of the crystal structure (Francuski *et al.*, 2011).

### S2. Experimental

The title compound was obtained by treating methyl vinyl ketone with the corresponding thiophenol in the presence of an electrochemically generated zirconium catalyst, following the reported procedure (Stevanović *et al.*, 2012).

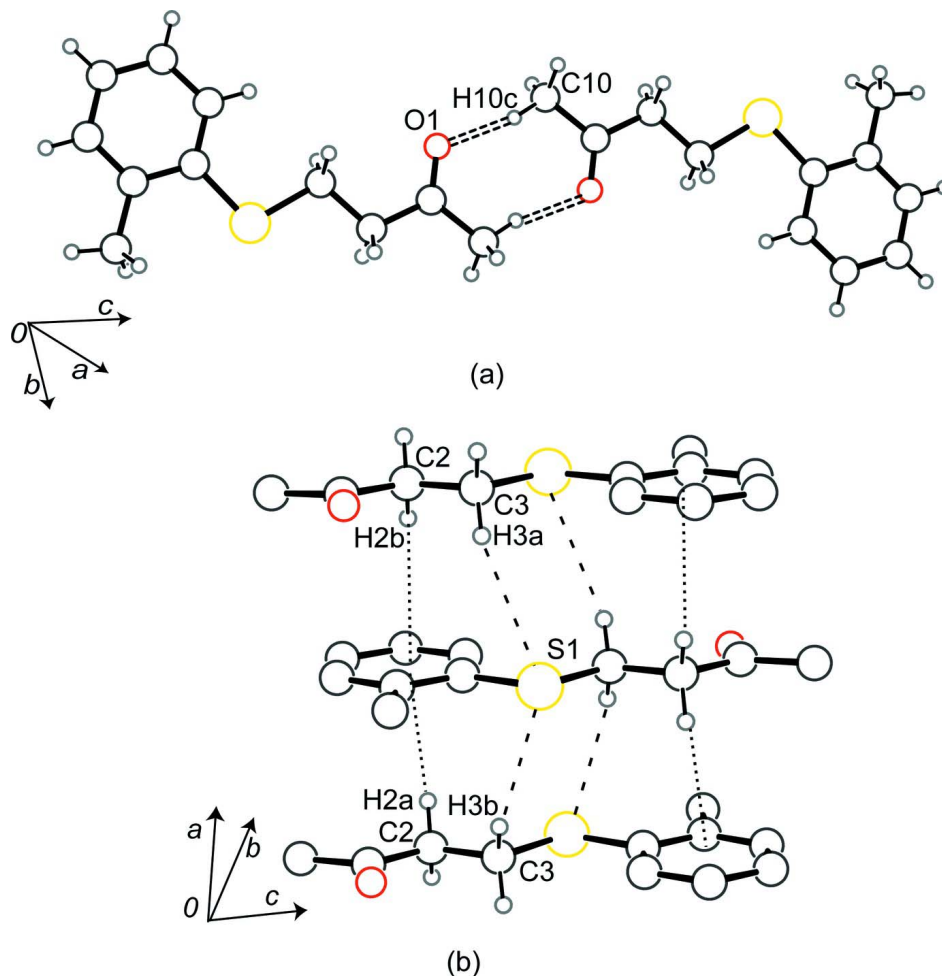
### S3. Refinement

All H atoms were placed at geometrically calculated positions and included in the refinement in the riding model approximation, with C—H lengths of 0.93 (CH), 0.96 (CH<sub>3</sub>) and 0.97 (CH<sub>2</sub>) Å.  $U_{\text{iso}}$  of the H atoms was set at  $1.5U_{\text{eq}}$  of the parent C atom for the methyl group and at  $1.2U_{\text{eq}}$  otherwise.



**Figure 1**

The molecular structure of the title compound, with atom labels and 40% probability displacement ellipsoids for non-H atoms.

**Figure 2**

Intermolecular interactions in the title compound: (a) C—H...O interactions (dashed lines) connecting centrosymmetrically related molecules into dimers; (b) C—H... $\pi$  (dotted lines) and C—H...S interactions (dashed lines) connecting the molecules along *a* axis. H-atoms not involved in hydrogen interactions are omitted.

#### 4-[(4-Methylphenyl)sulfonyl]butan-2-one

##### Crystal data

$C_{11}H_{14}OS$

$M_r = 194.28$

Triclinic,  $P\bar{1}$

Hall symbol:  $-P\ 1$

$a = 7.2703$  (11) Å

$b = 7.3226$  (7) Å

$c = 11.7615$  (11) Å

$\alpha = 88.232$  (8)°

$\beta = 79.343$  (10)°

$\gamma = 61.350$  (13)°

$V = 538.80$  (13) Å<sup>3</sup>

$Z = 2$

$F(000) = 208$

$D_x = 1.198$  Mg m<sup>-3</sup>

Cu  $K\alpha$  radiation,  $\lambda = 1.54180$  Å

Cell parameters from 1309 reflections

$\theta = 7.0$ – $72.1$ °

$\mu = 2.33$  mm<sup>-1</sup>

$T = 293$  K

Prismatic, colourless

$0.50 \times 0.26 \times 0.14$  mm

Data collection

Agilent Gemini S  
diffractometer

Radiation source: Enhance (Cu) X-ray Source

Graphite monochromator

Detector resolution: 16.3280 pixels mm<sup>-1</sup>

$\omega$  scans

Absorption correction: multi-scan  
(*CrysAlis PRO*; Agilent, 2013)

$T_{\min} = 0.444$ ,  $T_{\max} = 1.000$

3254 measured reflections

2052 independent reflections

1731 reflections with  $I > 2\sigma(I)$

$R_{\text{int}} = 0.027$

$\theta_{\max} = 72.9^\circ$ ,  $\theta_{\min} = 3.8^\circ$

$h = -8 \rightarrow 8$

$k = -9 \rightarrow 5$

$l = -14 \rightarrow 14$

Refinement

Refinement on  $F^2$

Least-squares matrix: full

$R[F^2 > 2\sigma(F^2)] = 0.055$

$wR(F^2) = 0.170$

$S = 1.07$

2052 reflections

120 parameters

0 restraints

Primary atom site location: structure-invariant  
direct methods

Secondary atom site location: difference Fourier  
map

Hydrogen site location: inferred from  
neighbouring sites

H-atom parameters constrained

$w = 1/[\sigma^2(F_o^2) + (0.1046P)^2 + 0.083P]$

where  $P = (F_o^2 + 2F_c^2)/3$

$(\Delta/\sigma)_{\max} < 0.001$

$\Delta\rho_{\max} = 0.34 \text{ e } \text{\AA}^{-3}$

$\Delta\rho_{\min} = -0.33 \text{ e } \text{\AA}^{-3}$

Fractional atomic coordinates and isotropic or equivalent isotropic displacement parameters ( $\text{\AA}^2$ )

	<i>x</i>	<i>y</i>	<i>z</i>	$U_{\text{iso}}^*/U_{\text{eq}}$
S1	0.31244 (10)	-0.14778 (8)	0.03374 (5)	0.0640 (3)
O1	0.2948 (4)	0.0791 (3)	-0.32862 (19)	0.0927 (7)
C1	0.3882 (4)	-0.1053 (4)	-0.3166 (2)	0.0643 (6)
C2	0.4007 (4)	-0.1919 (4)	-0.2004 (2)	0.0596 (6)
H2A	0.5496	-0.2765	-0.1949	0.072*
H2B	0.3359	-0.2818	-0.1924	0.072*
C3	0.2892 (4)	-0.0231 (4)	-0.1015 (2)	0.0576 (6)
H3A	0.1398	0.0627	-0.1058	0.069*
H3B	0.3552	0.0656	-0.1070	0.069*
C4	0.1796 (3)	0.0637 (3)	0.14013 (19)	0.0524 (5)
C5	0.1709 (4)	0.0158 (4)	0.2556 (2)	0.0598 (6)
C6	0.0713 (5)	0.1782 (4)	0.3408 (2)	0.0709 (7)
H6	0.0662	0.1474	0.4182	0.085*
C7	-0.0202 (4)	0.3834 (4)	0.3140 (2)	0.0714 (7)
H7	-0.0864	0.4896	0.3728	0.086*
C8	-0.0132 (4)	0.4303 (4)	0.2004 (2)	0.0687 (7)
H8	-0.0762	0.5690	0.1819	0.082*
C9	0.0874 (4)	0.2723 (4)	0.1125 (2)	0.0639 (6)
H9	0.0935	0.3050	0.0353	0.077*
C10	0.4997 (5)	-0.2615 (5)	-0.4198 (2)	0.0793 (8)
H10A	0.4179	-0.3296	-0.4283	0.119*
H10B	0.6391	-0.3635	-0.4083	0.119*
H10C	0.5132	-0.1911	-0.4884	0.119*
C11	0.2678 (6)	-0.2074 (4)	0.2878 (3)	0.0811 (8)
H11A	0.2357	-0.2111	0.3705	0.122*

H11B	0.4198	-0.2749	0.2614	0.122*
H11C	0.2095	-0.2787	0.2519	0.122*

*Atomic displacement parameters (Å<sup>2</sup>)*

	$U^{11}$	$U^{22}$	$U^{33}$	$U^{12}$	$U^{13}$	$U^{23}$
S1	0.0807 (5)	0.0453 (4)	0.0554 (4)	-0.0233 (3)	-0.0076 (3)	-0.0088 (2)
O1	0.1279 (18)	0.0579 (11)	0.0675 (12)	-0.0307 (12)	-0.0024 (11)	-0.0022 (9)
C1	0.0754 (15)	0.0555 (13)	0.0581 (13)	-0.0312 (12)	-0.0025 (11)	-0.0110 (10)
C2	0.0651 (14)	0.0516 (12)	0.0570 (13)	-0.0263 (11)	-0.0029 (10)	-0.0126 (10)
C3	0.0650 (13)	0.0497 (12)	0.0524 (12)	-0.0248 (10)	-0.0043 (10)	-0.0106 (9)
C4	0.0569 (12)	0.0455 (11)	0.0511 (11)	-0.0225 (9)	-0.0066 (9)	-0.0084 (8)
C5	0.0675 (14)	0.0561 (13)	0.0554 (12)	-0.0299 (11)	-0.0101 (10)	-0.0004 (10)
C6	0.0868 (18)	0.0749 (17)	0.0496 (13)	-0.0406 (14)	-0.0041 (12)	-0.0053 (11)
C7	0.0769 (16)	0.0612 (15)	0.0637 (15)	-0.0276 (13)	0.0019 (12)	-0.0204 (12)
C8	0.0773 (16)	0.0463 (12)	0.0700 (15)	-0.0221 (11)	-0.0061 (12)	-0.0092 (11)
C9	0.0798 (16)	0.0493 (12)	0.0549 (13)	-0.0258 (11)	-0.0104 (11)	-0.0016 (10)
C10	0.106 (2)	0.0705 (17)	0.0544 (14)	-0.0401 (16)	-0.0038 (14)	-0.0132 (12)
C11	0.113 (2)	0.0628 (16)	0.0651 (16)	-0.0389 (16)	-0.0217 (15)	0.0098 (12)

*Geometric parameters (Å, °)*

S1—C4	1.771 (2)	C6—C7	1.375 (4)
S1—C3	1.804 (2)	C6—H6	0.9300
O1—C1	1.204 (3)	C7—C8	1.367 (4)
C1—C2	1.488 (4)	C7—H7	0.9300
C1—C10	1.506 (3)	C8—C9	1.388 (3)
C2—C3	1.522 (3)	C8—H8	0.9300
C2—H2A	0.9700	C9—H9	0.9300
C2—H2B	0.9700	C10—H10A	0.9600
C3—H3A	0.9700	C10—H10B	0.9600
C3—H3B	0.9700	C10—H10C	0.9600
C4—C5	1.390 (3)	C11—H11A	0.9600
C4—C9	1.398 (3)	C11—H11B	0.9600
C5—C6	1.386 (3)	C11—H11C	0.9600
C5—C11	1.506 (3)		
C4—S1—C3	103.72 (11)	C7—C6—H6	119.1
O1—C1—C2	122.4 (2)	C5—C6—H6	119.1
O1—C1—C10	121.3 (3)	C8—C7—C6	119.5 (2)
C2—C1—C10	116.4 (2)	C8—C7—H7	120.2
C1—C2—C3	112.78 (19)	C6—C7—H7	120.2
C1—C2—H2A	109.0	C7—C8—C9	120.4 (2)
C3—C2—H2A	109.0	C7—C8—H8	119.8
C1—C2—H2B	109.0	C9—C8—H8	119.8
C3—C2—H2B	109.0	C8—C9—C4	119.9 (2)
H2A—C2—H2B	107.8	C8—C9—H9	120.1
C2—C3—S1	108.38 (16)	C4—C9—H9	120.1

C2—C3—H3A	110.0	C1—C10—H10A	109.5
S1—C3—H3A	110.0	C1—C10—H10B	109.5
C2—C3—H3B	110.0	H10A—C10—H10B	109.5
S1—C3—H3B	110.0	C1—C10—H10C	109.5
H3A—C3—H3B	108.4	H10A—C10—H10C	109.5
C5—C4—C9	119.8 (2)	H10B—C10—H10C	109.5
C5—C4—S1	117.25 (18)	C5—C11—H11A	109.5
C9—C4—S1	122.96 (18)	C5—C11—H11B	109.5
C6—C5—C4	118.5 (2)	H11A—C11—H11B	109.5
C6—C5—C11	120.6 (2)	C5—C11—H11C	109.5
C4—C5—C11	120.9 (2)	H11A—C11—H11C	109.5
C7—C6—C5	121.9 (2)	H11B—C11—H11C	109.5

*Hydrogen-bond geometry (Å, °)*

C<sub>g</sub> is the centroid of the C4—C9 phenyl ring.

<i>D</i> —H... <i>A</i>	<i>D</i> —H	H... <i>A</i>	<i>D</i> ... <i>A</i>	<i>D</i> —H... <i>A</i>
C10—H10c...O1 <sup>i</sup>	0.96	2.67	3.579 (4)	158
C3—H3a...S1 <sup>ii</sup>	0.97	2.99	3.855 (3)	149
C3—H3b...S1 <sup>iii</sup>	0.97	3.02	3.870 (3)	147
C2—H2a...C <sub>g</sub> <sup>ii</sup>	0.97	2.86	3.628 (4)	137
C2—H2b...C <sub>g</sub> <sup>iv</sup>	0.97	2.95	3.678 (4)	133

Symmetry codes: (i)  $-x+1, -y, -z-1$ ; (ii)  $-x, -y, -z$ ; (iii)  $-x+1, -y, -z$ ; (iv)  $-x+1, -y+1, -z+1$ .