

Acta Crystallographica Section E

Structure Reports

Online

ISSN 1600-5368

Ethyl 4-anilino-2-methyl-5-oxo-1-phenyl-2,5-dihydro-1H-pyrrole-2-carboxylate

 Mehmet Akkurt,^a Shaaban K. Mohamed,^{b,c}
 Mahmoud A. A. Elremaily,^{d,e} Francisco Santoyo-
 Gonzalez^e and Mustafa R. Albayati^{f,*}

^aDepartment of Physics, Faculty of Sciences, Erciyes University, 38039 Kayseri, Turkey, ^bChemistry and Environmental Division, Manchester Metropolitan University, Manchester M1 5GD, England, ^cChemistry Department, Faculty of Science, Minia University, 61519 El-Minia, Egypt, ^dChemistry Department, Faculty of Science, Sohag University, 82524 Sohag, Egypt, ^eDepartment of Organic Chemistry, Faculty of Science, Institute of Biotechnology, Granada University, Granada E-18071, Spain, and ^fKirkuk University, College of Science, Department of Chemistry, Kirkuk, Iraq

Correspondence e-mail: shaabankamel@yahoo.com

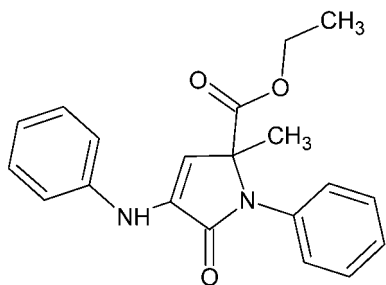
Received 4 November 2013; accepted 6 November 2013

 Key indicators: single-crystal X-ray study; $T = 100$ K; mean $\sigma(\text{C}-\text{C}) = 0.002$ Å; R factor = 0.037; wR factor = 0.096; data-to-parameter ratio = 14.5.

In the title compound, $\text{C}_{20}\text{H}_{20}\text{N}_2\text{O}_3$, the central 2,5-dihydro-1H-pyrrole ring [r.m.s. deviation = 0.014 (1) Å] is oriented at dihedral angles of 77.81 (6) and 25.33 (6)°, respectively, to the attached phenyl ring and the aniline phenyl ring. An intramolecular $\text{N}-\text{H}\cdots\text{O}$ hydrogen bond occurs. In the crystal, molecules are linked through pairs of $\text{N}-\text{H}\cdots\text{O}$ hydrogen bonds, forming inversion dimers with an $R_2^2(10)$ ring motif. Two weak $\text{C}-\text{H}\cdots\pi$ interactions are also observed.

Related literature

For the synthesis of pyrrolone compounds, see: Shiraki *et al.* (1996). For the biological activity of lactams, see: Alvi *et al.* (1998); Li *et al.* (2002); Mase *et al.* (1999); Wiedhopf *et al.* (1973). For bond-length data, see: Allen *et al.* (1987). For hydrogen-bond motifs, see: Bernstein *et al.* (1995).



Experimental

Crystal data

$\text{C}_{20}\text{H}_{20}\text{N}_2\text{O}_3$
 $M_r = 336.38$
 Triclinic, $P\bar{1}$
 $a = 5.9071$ (6) Å
 $b = 11.3474$ (12) Å
 $c = 14.1716$ (14) Å
 $\alpha = 111.467$ (2)°
 $\beta = 101.113$ (3)°
 $\gamma = 95.328$ (3)°
 $V = 853.45$ (15) Å³
 $Z = 2$
 Cu $K\alpha$ radiation
 $\mu = 0.72$ mm⁻¹
 $T = 100$ K
 $0.34 \times 0.29 \times 0.21$ mm

Data collection

Bruker APEXII CCD diffractometer
 Absorption correction: multi-scan (*SADABS*; Bruker, 2005)
 $T_{\min} = 0.783$, $T_{\max} = 0.860$
 18887 measured reflections
 3367 independent reflections
 3156 reflections with $I > 2\sigma(I)$
 $R_{\text{int}} = 0.035$

Refinement

$R[F^2 > 2\sigma(F^2)] = 0.037$
 $wR(F^2) = 0.096$
 $S = 1.04$
 3367 reflections
 232 parameters
 H atoms treated by a mixture of independent and constrained refinement
 $\Delta\rho_{\text{max}} = 0.32$ e Å⁻³
 $\Delta\rho_{\text{min}} = -0.17$ e Å⁻³

Table 1

Hydrogen-bond geometry (Å, °).

Cg2 and Cg3 are the centroids of the C8–C13 and C15–C20 phenyl rings, respectively.

| $D-\text{H}\cdots A$ | $D-\text{H}$ | $\text{H}\cdots A$ | $D\cdots A$ | $D-\text{H}\cdots A$ |
|--|--------------|--------------------|-------------|----------------------|
| $\text{N2}-\text{H2N}\cdots\text{O3}$ | 0.898 (17) | 2.443 (16) | 2.8247 (14) | 105.9 (12) |
| $\text{N2}-\text{H2N}\cdots\text{O3}^{\text{i}}$ | 0.898 (17) | 2.033 (17) | 2.9135 (14) | 166.3 (14) |
| $\text{C1}-\text{H1B}\cdots\text{Cg2}^{\text{ii}}$ | 0.98 | 2.91 | 3.6177 (15) | 130 |
| $\text{C12}-\text{H12}\cdots\text{Cg3}^{\text{iii}}$ | 0.95 | 2.84 | 3.4865 (14) | 126 |

Symmetry codes: (i) $-x + 2, -y, -z + 2$; (ii) $-x, -y, -z + 1$; (iii) $-x + 1, -y, -z + 2$.

Data collection: *APEX2* (Bruker, 2007); cell refinement: *SAINT* (Bruker, 2007); data reduction: *SAINT*; program(s) used to solve structure: *SIR97* (Altomare *et al.*, 1999); program(s) used to refine structure: *SHELXL97* (Sheldrick, 2008); molecular graphics: *ORTEP-3 for Windows* (Farrugia, 2012); software used to prepare material for publication: *WinGX* (Farrugia, 2012) and *PLATON* (Spek, 2009).

Manchester Metropolitan University, Erciyes University and Granada University are gratefully acknowledged for supporting this study. The authors also thank José Romero Garzón, Centro de Instrumentación Científica, Universidad de Granada, for the data collection.

Supplementary data and figures for this paper are available from the IUCr electronic archives (Reference: IS5318).

References

- Allen, F. H., Kennard, O., Watson, D. G., Brammer, L., Orpen, A. G. & Taylor, R. (1987). *J. Chem. Soc. Perkin Trans. 2*, pp. S1–19.
 Altomare, A., Burla, M. C., Camalli, M., Cascarano, G. L., Giacovazzo, C., Guagliardi, A., Moliterni, A. G. G., Polidori, G. & Spagna, R. (1999). *J. Appl. Cryst.* **32**, 115–119.
 Alvi, K. A., Casey, A. & Nair, B. G. (1998). *J. Antibiot.* **51**, 515–517.

- Bernstein, J., Davis, R. E., Shimoni, L. & Chang, N.-L. (1995). *Angew. Chem. Int. Ed. Engl.* **34**, 1555–1573.
- Bruker (2005). *SADABS*. Bruker AXS Inc., Madison, Wisconsin, USA.
- Bruker (2007). *APEX2* and *SAINT*. Bruker AXS Inc., Madison, Wisconsin, USA.
- Farrugia, L. J. (2012). *J. Appl. Cryst.* **45**, 849–854.
- Li, W.-R., Lin, S. T., Hsu, N.-M. & Chern, M.-S. (2002). *J. Org. Chem.* **67**, 4702–4706.
- Mase, N., Nishi, T., Takamori, Y., Yoda, H. & Takabe, K. (1999). *Tetrahedron Asymmetry*, **10**, 4469–4471.
- Sheldrick, G. M. (2008). *Acta Cryst.* **A64**, 112–122.
- Shiraki, R., Sumino, A., Tadano, K.-I. & Ogawa, S. (1996). *J. Org. Chem.* **61**, 2845–2852.
- Spek, A. L. (2009). *Acta Cryst.* **D65**, 148–155.
- Wiedhopf, R. M., Trumbull, E. R. & Cole, J. R. (1973). *J. Pharm. Sci.* **62**, 1206–1207.

supporting information

Acta Cryst. (2013). E69, o1757–o1758 [doi:10.1107/S1600536813030390]

Ethyl 4-anilino-2-methyl-5-oxo-1-phenyl-2,5-dihydro-1H-pyrrole-2-carboxylate

Mehmet Akkurt, Shaaban K. Mohamed, Mahmoud A. A. Elremaily, Francisco Santoyo-Gonzalez and Mustafa R. Albayati

S1. Comment

Dihydropyrrolone compounds have been reported to display important biological activities with better hydrolytic stability. Dihydropyrrolones are known as lactams such as Pulchellalactam, which inhibits CD45 protein, a receptor-like transmembrane protein tyrosine phosphatase, and therefore could be of therapeutic value targeting autoimmune and chronic anti-inflammatory diseases (Alvi *et al.*, 1998; Li *et al.*, 2002). γ -Lactam PI-091 has been reported to display potent activity against platelet aggregation (Shiraki *et al.*, 1996) and jatropham has been proven to be an antitumor alkaloid (Mase *et al.*, 1999; Wiedhopf *et al.*, 1973). Numerous methods to synthesize pyrrol-2-ones have been reported in the literature and the majority of these require multiple steps with low yields. However, one direct conversion strategy has been demonstrated in synthesis of γ -lactam PI-091 (Shiraki *et al.*, 1996). Based on this concept, we herein report the synthesis and crystal structure of the title compound.

In the title compound, the central 2,5-dihydro-1H-pyrrole ring (N1/C4–C7) makes dihedral angles of 77.81 (6) and 25.33 (6)° with the two phenyl rings (C8–C13 and C15–C20), respectively (Fig. 1). All bond lengths and bond angles are normal (Allen *et al.*, 1987).

In the crystal structure, pairs of adjacent molecules are linked through intermolecular N—H \cdots O hydrogen bonds (Table 1), forming inversion dimers with $R^2_2(10)$ ring motifs (Bernstein *et al.*, 1995; Fig. 2). Two weak C—H \cdots π interactions are observed.

S2. Experimental

In a 50 ml round bottom flask, a mixture of 186 mg of aniline (2 mmol) and 232 mg of ethyl pyruvate (2 mmol) were taken in presence of 8 mol % of Fe₃O₄ nanoparticles in 15 ml ethanol/water (v/v) or glacial acetic acid was stirred well and irradiated in microwave for 30 minutes. The progress of the reaction was monitored by TLC. After completion, the solid product was filtered off, washed with water and recrystallized from ethanol. Single crystals suitable for X-ray analysis were obtained by slow evaporation method of an ethanolic solution of the title compound at room temperature.

S3. Refinement

The C-bound H-atoms were positioned geometrically, with C—H = 0.95, 0.98 and 0.99 Å for aromatic, methyl and methylene H, respectively, and allowed to ride on their respective parent atoms, with $U_{\text{iso}}(\text{H}) = xU_{\text{eq}}(\text{C})$, where $x = 1.5$ for methyl H, and $x = 1.2$ for the other H atoms. The N-bound H-atom was located in a difference Fourier map and refined freely.

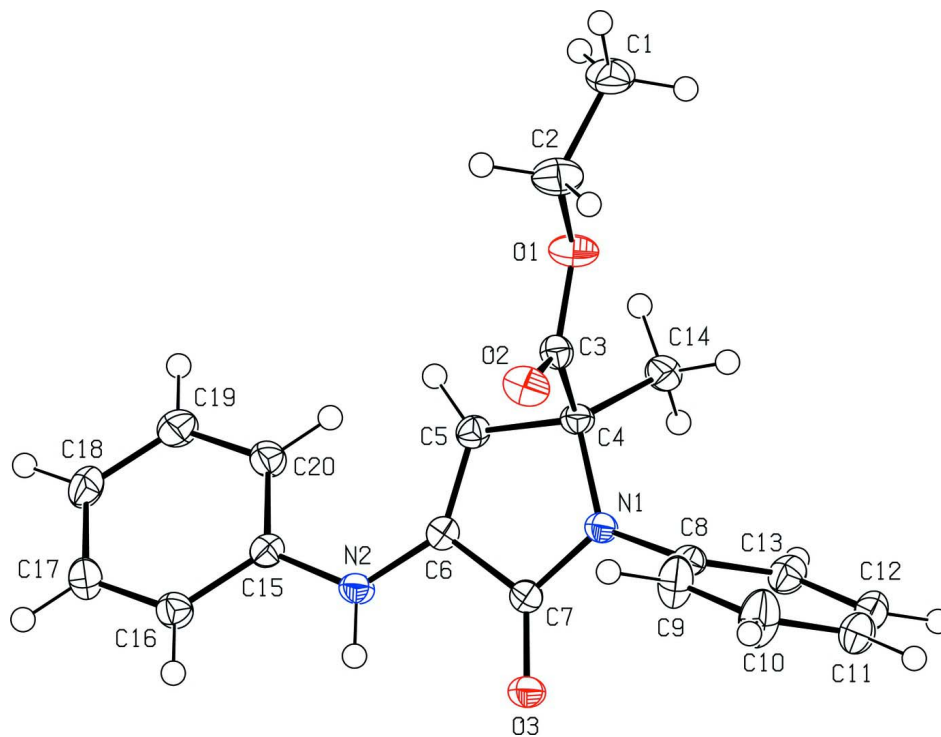
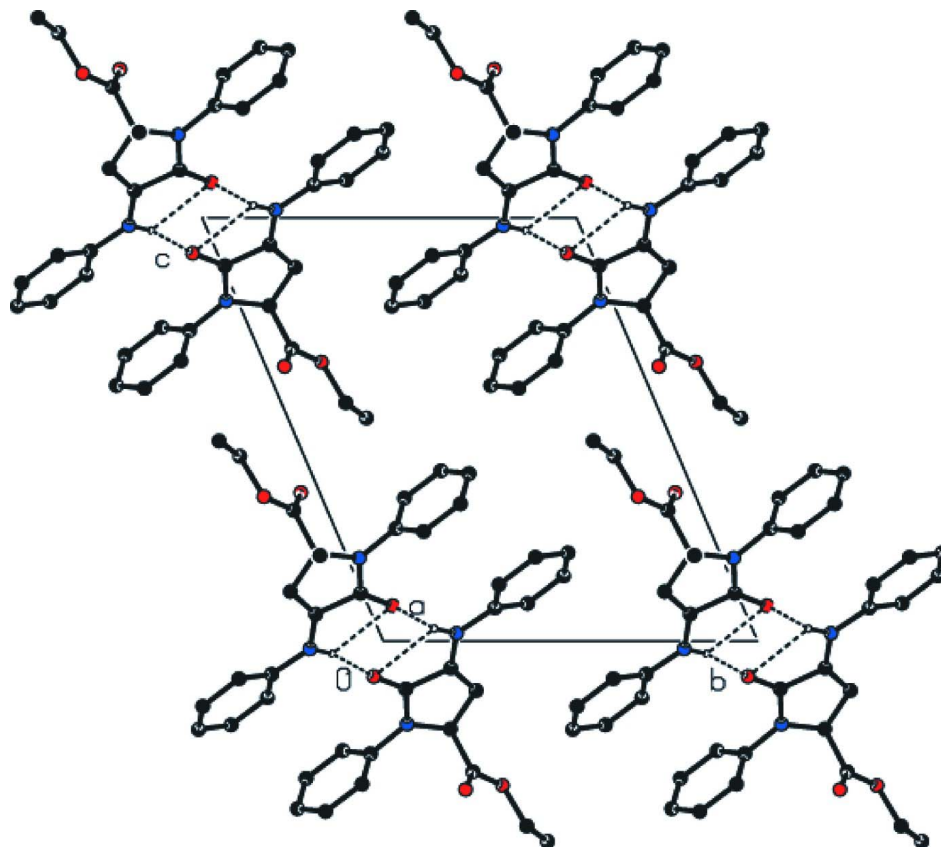


Figure 1

The molecular structure of the title compound with the atom numbering scheme. Displacement ellipsoids for non-H atoms are drawn at the 50% probability level.

**Figure 2**

View of the molecular packing and hydrogen bonding (dotted lines) of the title compound along the *a* axis. H atoms not involved in H bonding are omitted for clarity.

Ethyl 4-anilino-2-methyl-5-oxo-1-phenyl-2,5-dihydro-1*H*-pyrrole-2-carboxylate

Crystal data

$C_{20}H_{20}N_2O_3$

$M_r = 336.38$

Triclinic, $P\bar{1}$

Hall symbol: $-P\ 1$

$a = 5.9071\ (6)\ \text{\AA}$

$b = 11.3474\ (12)\ \text{\AA}$

$c = 14.1716\ (14)\ \text{\AA}$

$\alpha = 111.467\ (2)^\circ$

$\beta = 101.113\ (3)^\circ$

$\gamma = 95.328\ (3)^\circ$

$V = 853.45\ (15)\ \text{\AA}^3$

$Z = 2$

$F(000) = 356$

$D_x = 1.309\ \text{Mg m}^{-3}$

Cu $K\alpha$ radiation, $\lambda = 1.54178\ \text{\AA}$

Cell parameters from 9891 reflections

$\theta = 3.5\text{--}72.5^\circ$

$\mu = 0.72\ \text{mm}^{-1}$

$T = 100\ \text{K}$

Cubs, colourless

$0.34 \times 0.29 \times 0.21\ \text{mm}$

Data collection

Bruker APEXII CCD
diffractometer

Radiation source: sealed tube

Graphite monochromator

φ and ω scans

Absorption correction: multi-scan
(*SADABS*; Bruker, 2005)

$T_{\min} = 0.783$, $T_{\max} = 0.860$

18887 measured reflections

3367 independent reflections

3156 reflections with $I > 2\sigma(I)$

$R_{\text{int}} = 0.035$
 $\theta_{\text{max}} = 72.6^\circ$, $\theta_{\text{min}} = 3.5^\circ$
 $h = -7 \rightarrow 7$

$k = -14 \rightarrow 14$
 $l = -17 \rightarrow 17$

Refinement

Refinement on F^2
 Least-squares matrix: full
 $R[F^2 > 2\sigma(F^2)] = 0.037$
 $wR(F^2) = 0.096$
 $S = 1.04$
 3367 reflections
 232 parameters
 0 restraints

H atoms treated by a mixture of independent
 and constrained refinement
 $w = 1/[\sigma^2(F_o^2) + (0.0487P)^2 + 0.3108P]$ WHERE
 $P = (F_o^2 + 2F_c^2)/3$
 $(\Delta/\sigma)_{\text{max}} < 0.001$
 $\Delta\rho_{\text{max}} = 0.32 \text{ e } \text{\AA}^{-3}$
 $\Delta\rho_{\text{min}} = -0.17 \text{ e } \text{\AA}^{-3}$

Special details

Geometry. Bond distances, angles *etc.* have been calculated using the rounded fractional coordinates. All su's are estimated from the variances of the (full) variance-covariance matrix. The cell e.s.d.'s are taken into account in the estimation of distances, angles and torsion angles

Refinement. Refinement on F^2 for ALL reflections except those flagged by the user for potential systematic errors. Weighted R -factors wR and all goodnesses of fit S are based on F^2 , conventional R -factors R are based on F , with F set to zero for negative F^2 . The observed criterion of $F^2 > \sigma(F^2)$ is used only for calculating $-R$ -factor-obs *etc.* and is not relevant to the choice of reflections for refinement. R -factors based on F^2 are statistically about twice as large as those based on F , and R -factors based on ALL data will be even larger.

Fractional atomic coordinates and isotropic or equivalent isotropic displacement parameters (\AA^2)

| | x | y | z | $U_{\text{iso}}^*/U_{\text{eq}}$ |
|-----|--------------|---------------|--------------|----------------------------------|
| O1 | 0.25546 (15) | 0.15386 (9) | 0.65884 (6) | 0.0278 (3) |
| O2 | 0.56211 (15) | 0.05034 (9) | 0.64918 (7) | 0.0284 (3) |
| O3 | 0.76449 (14) | -0.06561 (7) | 0.91641 (6) | 0.0245 (2) |
| N1 | 0.46752 (16) | -0.03089 (9) | 0.80378 (7) | 0.0188 (2) |
| N2 | 0.88879 (16) | 0.20496 (9) | 1.01844 (7) | 0.0198 (3) |
| C1 | 0.0420 (2) | 0.20985 (14) | 0.52705 (10) | 0.0347 (4) |
| C2 | 0.2691 (2) | 0.17212 (13) | 0.56318 (10) | 0.0321 (4) |
| C3 | 0.41016 (19) | 0.09001 (10) | 0.69110 (8) | 0.0202 (3) |
| C4 | 0.37187 (18) | 0.07904 (10) | 0.79249 (8) | 0.0185 (3) |
| C5 | 0.53286 (19) | 0.19157 (10) | 0.88320 (8) | 0.0186 (3) |
| C6 | 0.69734 (18) | 0.14945 (10) | 0.93602 (8) | 0.0174 (3) |
| C7 | 0.65363 (18) | 0.00576 (10) | 0.88708 (8) | 0.0179 (3) |
| C8 | 0.38731 (19) | -0.16263 (10) | 0.73392 (8) | 0.0195 (3) |
| C9 | 0.5140 (2) | -0.22001 (12) | 0.66212 (11) | 0.0326 (4) |
| C10 | 0.4452 (2) | -0.34902 (13) | 0.59739 (12) | 0.0386 (4) |
| C11 | 0.2505 (2) | -0.42071 (11) | 0.60400 (10) | 0.0279 (3) |
| C12 | 0.1241 (2) | -0.36303 (11) | 0.67556 (9) | 0.0262 (3) |
| C13 | 0.1920 (2) | -0.23334 (11) | 0.74107 (9) | 0.0241 (3) |
| C14 | 0.11531 (19) | 0.07087 (11) | 0.79771 (9) | 0.0235 (3) |
| C15 | 0.97223 (19) | 0.33611 (10) | 1.07830 (8) | 0.0189 (3) |
| C16 | 1.2078 (2) | 0.37409 (11) | 1.13371 (9) | 0.0229 (3) |
| C17 | 1.2957 (2) | 0.50213 (12) | 1.19811 (10) | 0.0258 (3) |
| C18 | 1.1522 (2) | 0.59446 (11) | 1.20871 (10) | 0.0263 (3) |
| C19 | 0.9195 (2) | 0.55647 (11) | 1.15397 (10) | 0.0273 (3) |

| | | | | |
|------|------------|--------------|-------------|------------|
| C20 | 0.8280 (2) | 0.42848 (11) | 1.08897 (9) | 0.0233 (3) |
| H1A | -0.08820 | 0.14030 | 0.51190 | 0.0520* |
| H1B | 0.04340 | 0.22560 | 0.46360 | 0.0520* |
| H1C | 0.02220 | 0.28840 | 0.58200 | 0.0520* |
| H2A | 0.28960 | 0.09150 | 0.50930 | 0.0390* |
| H2B | 0.40280 | 0.24060 | 0.57730 | 0.0390* |
| H2N | 0.981 (3) | 0.1504 (14) | 1.0297 (11) | 0.025 (3)* |
| H5 | 0.51940 | 0.27930 | 0.90030 | 0.0220* |
| H9 | 0.64740 | -0.17100 | 0.65730 | 0.0390* |
| H10 | 0.53200 | -0.38860 | 0.54820 | 0.0460* |
| H11 | 0.20380 | -0.50930 | 0.55940 | 0.0340* |
| H12 | -0.00960 | -0.41220 | 0.68000 | 0.0310* |
| H13 | 0.10520 | -0.19370 | 0.79020 | 0.0290* |
| H14A | 0.01820 | 0.00030 | 0.73480 | 0.0350* |
| H14B | 0.06470 | 0.15210 | 0.80210 | 0.0350* |
| H14C | 0.09850 | 0.05490 | 0.85970 | 0.0350* |
| H16 | 1.30760 | 0.31200 | 1.12720 | 0.0270* |
| H17 | 1.45580 | 0.52720 | 1.23550 | 0.0310* |
| H18 | 1.21320 | 0.68220 | 1.25280 | 0.0320* |
| H19 | 0.82040 | 0.61890 | 1.16090 | 0.0330* |
| H20 | 0.66770 | 0.40400 | 1.05190 | 0.0280* |

Atomic displacement parameters (\AA^2)

| | U^{11} | U^{22} | U^{33} | U^{12} | U^{13} | U^{23} |
|-----|------------|------------|------------|-------------|-------------|-------------|
| O1 | 0.0344 (5) | 0.0343 (5) | 0.0224 (4) | 0.0158 (4) | 0.0085 (4) | 0.0168 (4) |
| O2 | 0.0282 (4) | 0.0362 (5) | 0.0246 (4) | 0.0117 (4) | 0.0100 (3) | 0.0131 (4) |
| O3 | 0.0252 (4) | 0.0189 (4) | 0.0263 (4) | 0.0053 (3) | -0.0017 (3) | 0.0091 (3) |
| N1 | 0.0187 (4) | 0.0161 (4) | 0.0194 (4) | 0.0038 (3) | 0.0006 (4) | 0.0064 (4) |
| N2 | 0.0209 (5) | 0.0171 (4) | 0.0189 (5) | 0.0058 (4) | 0.0009 (4) | 0.0057 (4) |
| C1 | 0.0423 (8) | 0.0358 (7) | 0.0282 (6) | 0.0081 (6) | 0.0000 (6) | 0.0190 (6) |
| C2 | 0.0427 (7) | 0.0380 (7) | 0.0222 (6) | 0.0129 (6) | 0.0085 (5) | 0.0176 (5) |
| C3 | 0.0206 (5) | 0.0180 (5) | 0.0183 (5) | 0.0022 (4) | 0.0009 (4) | 0.0053 (4) |
| C4 | 0.0191 (5) | 0.0172 (5) | 0.0192 (5) | 0.0051 (4) | 0.0031 (4) | 0.0074 (4) |
| C5 | 0.0210 (5) | 0.0162 (5) | 0.0178 (5) | 0.0041 (4) | 0.0048 (4) | 0.0057 (4) |
| C6 | 0.0188 (5) | 0.0170 (5) | 0.0165 (5) | 0.0036 (4) | 0.0059 (4) | 0.0057 (4) |
| C7 | 0.0177 (5) | 0.0184 (5) | 0.0178 (5) | 0.0038 (4) | 0.0048 (4) | 0.0069 (4) |
| C8 | 0.0199 (5) | 0.0171 (5) | 0.0191 (5) | 0.0033 (4) | -0.0004 (4) | 0.0069 (4) |
| C9 | 0.0248 (6) | 0.0221 (6) | 0.0442 (8) | 0.0011 (5) | 0.0142 (5) | 0.0034 (5) |
| C10 | 0.0354 (7) | 0.0237 (6) | 0.0481 (8) | 0.0039 (5) | 0.0205 (6) | -0.0003 (6) |
| C11 | 0.0303 (6) | 0.0177 (5) | 0.0285 (6) | 0.0010 (5) | 0.0018 (5) | 0.0043 (5) |
| C12 | 0.0291 (6) | 0.0229 (6) | 0.0245 (6) | -0.0031 (5) | 0.0035 (5) | 0.0104 (5) |
| C13 | 0.0298 (6) | 0.0232 (6) | 0.0197 (5) | 0.0022 (5) | 0.0065 (5) | 0.0092 (5) |
| C14 | 0.0189 (5) | 0.0255 (6) | 0.0277 (6) | 0.0056 (4) | 0.0056 (4) | 0.0121 (5) |
| C15 | 0.0225 (5) | 0.0175 (5) | 0.0166 (5) | 0.0032 (4) | 0.0052 (4) | 0.0066 (4) |
| C16 | 0.0217 (5) | 0.0221 (6) | 0.0242 (6) | 0.0055 (4) | 0.0051 (4) | 0.0081 (5) |
| C17 | 0.0211 (5) | 0.0247 (6) | 0.0275 (6) | -0.0004 (4) | 0.0036 (5) | 0.0080 (5) |
| C18 | 0.0302 (6) | 0.0174 (5) | 0.0271 (6) | -0.0003 (5) | 0.0055 (5) | 0.0059 (5) |

| | | | | | | |
|-----|------------|------------|------------|------------|------------|------------|
| C19 | 0.0302 (6) | 0.0191 (6) | 0.0306 (6) | 0.0077 (5) | 0.0056 (5) | 0.0076 (5) |
| C20 | 0.0219 (5) | 0.0207 (6) | 0.0238 (6) | 0.0048 (4) | 0.0024 (4) | 0.0063 (5) |

Geometric parameters (Å, °)

| | | | |
|------------|-------------|-------------|-------------|
| O1—C2 | 1.4601 (16) | C16—C17 | 1.3857 (19) |
| O1—C3 | 1.3317 (15) | C17—C18 | 1.3920 (19) |
| O2—C3 | 1.2025 (15) | C18—C19 | 1.3825 (18) |
| O3—C7 | 1.2237 (14) | C19—C20 | 1.3904 (18) |
| N1—C4 | 1.4639 (16) | C1—H1A | 0.9800 |
| N1—C7 | 1.3530 (14) | C1—H1B | 0.9800 |
| N1—C8 | 1.4296 (15) | C1—H1C | 0.9800 |
| N2—C6 | 1.3638 (14) | C2—H2A | 0.9900 |
| N2—C15 | 1.3985 (16) | C2—H2B | 0.9900 |
| N2—H2N | 0.898 (17) | C5—H5 | 0.9500 |
| C1—C2 | 1.4991 (19) | C9—H9 | 0.9500 |
| C3—C4 | 1.5434 (15) | C10—H10 | 0.9500 |
| C4—C5 | 1.5130 (16) | C11—H11 | 0.9500 |
| C4—C14 | 1.5274 (16) | C12—H12 | 0.9500 |
| C5—C6 | 1.3418 (16) | C13—H13 | 0.9500 |
| C6—C7 | 1.4938 (17) | C14—H14A | 0.9800 |
| C8—C9 | 1.3851 (17) | C14—H14B | 0.9800 |
| C8—C13 | 1.3848 (17) | C14—H14C | 0.9800 |
| C9—C10 | 1.383 (2) | C16—H16 | 0.9500 |
| C10—C11 | 1.3845 (19) | C17—H17 | 0.9500 |
| C11—C12 | 1.3825 (17) | C18—H18 | 0.9500 |
| C12—C13 | 1.3912 (18) | C19—H19 | 0.9500 |
| C15—C20 | 1.3953 (17) | C20—H20 | 0.9500 |
| C15—C16 | 1.3994 (16) | | |
| | | | |
| C2—O1—C3 | 116.61 (9) | C2—C1—H1A | 110.00 |
| C4—N1—C7 | 112.22 (10) | C2—C1—H1B | 109.00 |
| C4—N1—C8 | 125.67 (9) | C2—C1—H1C | 109.00 |
| C7—N1—C8 | 122.05 (10) | H1A—C1—H1B | 109.00 |
| C6—N2—C15 | 127.95 (10) | H1A—C1—H1C | 109.00 |
| C15—N2—H2N | 116.7 (10) | H1B—C1—H1C | 109.00 |
| C6—N2—H2N | 114.9 (10) | O1—C2—H2A | 111.00 |
| O1—C2—C1 | 106.07 (10) | O1—C2—H2B | 111.00 |
| O1—C3—O2 | 124.92 (11) | C1—C2—H2A | 110.00 |
| O2—C3—C4 | 125.00 (11) | C1—C2—H2B | 111.00 |
| O1—C3—C4 | 110.04 (9) | H2A—C2—H2B | 109.00 |
| N1—C4—C14 | 111.56 (10) | C4—C5—H5 | 125.00 |
| C3—C4—C5 | 107.20 (9) | C6—C5—H5 | 125.00 |
| N1—C4—C5 | 102.09 (9) | C8—C9—H9 | 120.00 |
| C5—C4—C14 | 113.07 (9) | C10—C9—H9 | 120.00 |
| C3—C4—C14 | 112.87 (9) | C9—C10—H10 | 120.00 |
| N1—C4—C3 | 109.43 (9) | C11—C10—H10 | 120.00 |
| C4—C5—C6 | 110.17 (10) | C10—C11—H11 | 120.00 |

| | | | |
|---------------|--------------|-----------------|--------------|
| C5—C6—C7 | 108.54 (9) | C12—C11—H11 | 120.00 |
| N2—C6—C5 | 135.95 (11) | C11—C12—H12 | 120.00 |
| N2—C6—C7 | 115.49 (10) | C13—C12—H12 | 120.00 |
| O3—C7—N1 | 126.32 (11) | C8—C13—H13 | 120.00 |
| O3—C7—C6 | 126.75 (10) | C12—C13—H13 | 120.00 |
| N1—C7—C6 | 106.93 (10) | C4—C14—H14A | 109.00 |
| N1—C8—C9 | 118.96 (11) | C4—C14—H14B | 109.00 |
| C9—C8—C13 | 120.50 (11) | C4—C14—H14C | 109.00 |
| N1—C8—C13 | 120.48 (10) | H14A—C14—H14B | 110.00 |
| C8—C9—C10 | 119.68 (12) | H14A—C14—H14C | 109.00 |
| C9—C10—C11 | 120.31 (12) | H14B—C14—H14C | 109.00 |
| C10—C11—C12 | 119.85 (13) | C15—C16—H16 | 120.00 |
| C11—C12—C13 | 120.27 (12) | C17—C16—H16 | 120.00 |
| C8—C13—C12 | 119.38 (11) | C16—C17—H17 | 120.00 |
| N2—C15—C16 | 117.97 (11) | C18—C17—H17 | 120.00 |
| C16—C15—C20 | 119.22 (11) | C17—C18—H18 | 121.00 |
| N2—C15—C20 | 122.73 (10) | C19—C18—H18 | 121.00 |
| C15—C16—C17 | 120.08 (12) | C18—C19—H19 | 119.00 |
| C16—C17—C18 | 120.79 (11) | C20—C19—H19 | 119.00 |
| C17—C18—C19 | 118.93 (12) | C15—C20—H20 | 120.00 |
| C18—C19—C20 | 121.14 (12) | C19—C20—H20 | 120.00 |
| C15—C20—C19 | 119.84 (11) | | |
| C3—O1—C2—C1 | 163.94 (11) | O2—C3—C4—N1 | -25.34 (16) |
| C2—O1—C3—O2 | 2.26 (18) | C3—C4—C5—C6 | -113.96 (11) |
| C2—O1—C3—C4 | -179.93 (10) | C14—C4—C5—C6 | 121.00 (11) |
| C7—N1—C8—C13 | 101.78 (13) | N1—C4—C5—C6 | 1.02 (12) |
| C7—N1—C4—C5 | 0.49 (12) | C4—C5—C6—N2 | 176.18 (12) |
| C8—N1—C4—C5 | -176.44 (10) | C4—C5—C6—C7 | -2.01 (13) |
| C7—N1—C4—C14 | -120.55 (10) | C5—C6—C7—O3 | -177.72 (11) |
| C8—N1—C4—C14 | 62.53 (13) | N2—C6—C7—N1 | -176.31 (9) |
| C4—N1—C8—C9 | 101.29 (14) | C5—C6—C7—N1 | 2.30 (12) |
| C7—N1—C4—C3 | 113.83 (10) | N2—C6—C7—O3 | 3.68 (17) |
| C8—N1—C4—C3 | -63.10 (13) | N1—C8—C9—C10 | 176.91 (12) |
| C4—N1—C7—C6 | -1.65 (12) | C9—C8—C13—C12 | 0.19 (18) |
| C4—N1—C7—O3 | 178.36 (11) | C13—C8—C9—C10 | -0.23 (19) |
| C8—N1—C7—O3 | -4.58 (18) | N1—C8—C13—C12 | -176.91 (11) |
| C4—N1—C8—C13 | -81.57 (14) | C8—C9—C10—C11 | 0.1 (2) |
| C8—N1—C7—C6 | 175.41 (9) | C9—C10—C11—C12 | 0.1 (2) |
| C7—N1—C8—C9 | -75.36 (15) | C10—C11—C12—C13 | -0.12 (19) |
| C15—N2—C6—C7 | 179.61 (10) | C11—C12—C13—C8 | -0.02 (19) |
| C6—N2—C15—C16 | -158.37 (11) | N2—C15—C16—C17 | -176.86 (11) |
| C15—N2—C6—C5 | 1.5 (2) | C20—C15—C16—C17 | -0.13 (18) |
| C6—N2—C15—C20 | 25.02 (18) | N2—C15—C20—C19 | 176.70 (11) |
| O1—C3—C4—C5 | -93.17 (11) | C16—C15—C20—C19 | 0.13 (17) |
| O1—C3—C4—N1 | 156.85 (9) | C15—C16—C17—C18 | 0.00 (19) |
| O2—C3—C4—C14 | -150.20 (12) | C16—C17—C18—C19 | 0.1 (2) |
| O1—C3—C4—C14 | 31.99 (13) | C17—C18—C19—C20 | -0.1 (2) |

| | | | |
|-------------|------------|-----------------|-----------|
| O2—C3—C4—C5 | 84.64 (14) | C18—C19—C20—C15 | 0.00 (19) |
|-------------|------------|-----------------|-----------|

Hydrogen-bond geometry (Å, °)

*Cg*2 and *Cg*3 are the centroids of the C8–C13 and C15–C20 phenyl rings, respectively.

| <i>D</i> —H··· <i>A</i> | <i>D</i> —H | H··· <i>A</i> | <i>D</i> ··· <i>A</i> | <i>D</i> —H··· <i>A</i> |
|---------------------------------------|-------------|---------------|-----------------------|-------------------------|
| N2—H2N···O3 | 0.898 (17) | 2.443 (16) | 2.8247 (14) | 105.9 (12) |
| N2—H2N···O3 ⁱ | 0.898 (17) | 2.033 (17) | 2.9135 (14) | 166.3 (14) |
| C1—H1B··· <i>Cg</i> 2 ⁱⁱ | 0.98 | 2.91 | 3.6177 (15) | 130 |
| C12—H12··· <i>Cg</i> 3 ⁱⁱⁱ | 0.95 | 2.84 | 3.4865 (14) | 126 |

Symmetry codes: (i) $-x+2, -y, -z+2$; (ii) $-x, -y, -z+1$; (iii) $-x+1, -y, -z+2$.