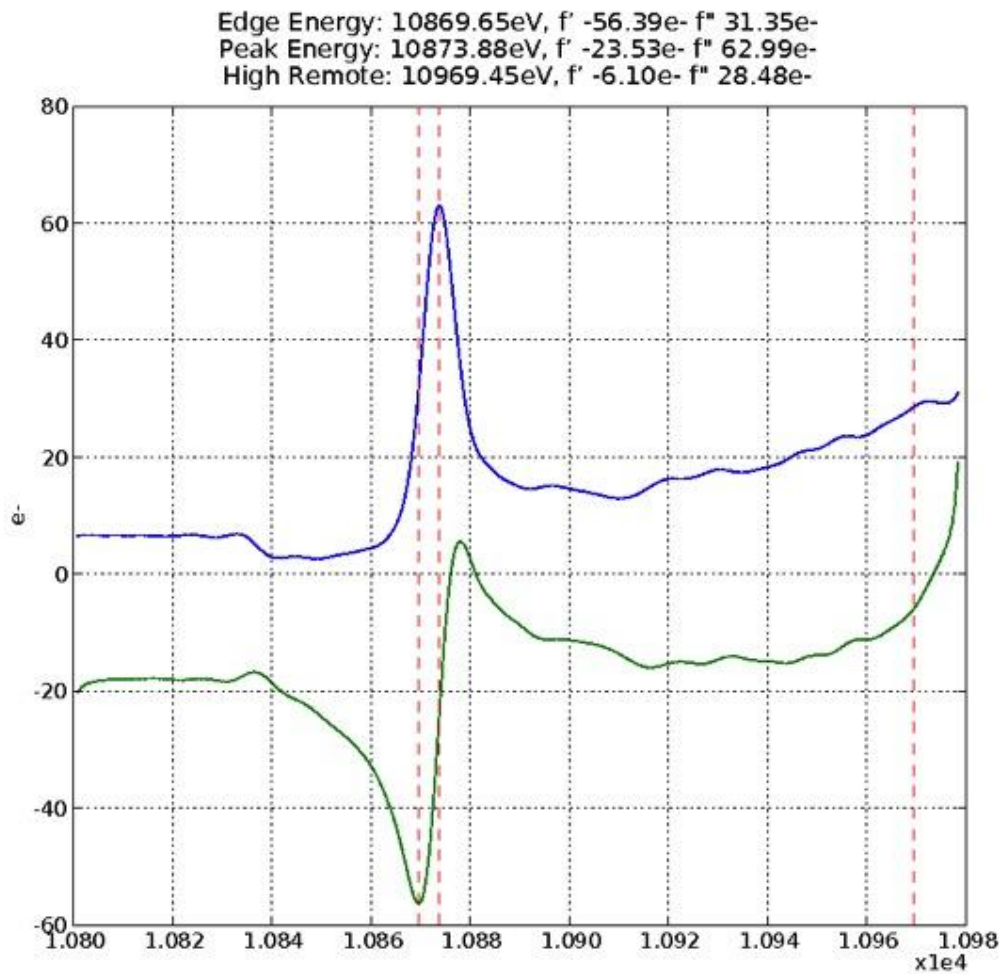


Supplementary Figure S1. SDS-PAGE gel of concentrated SaPLC1 protein next to the same protein isolated from representative crystals. The molecular weight (MW) marker is in lane 1. Lane 2 and lane 7 are from protein crystals that were harvested from the hanging drops (see text). Lanes 4 and 9 are from protein sample that was used for crystallization trials (post concentration step). Lanes 3, 5, 6, 8, and 10 were run empty so the gel lanes would not be distorted. Horizontal arrows mark smaller molecular weight contaminants that were present in the concentrated samples used for crystallization, but absent in the protein from the crystals.



Supplementary Figure S2. Fluorescence scan of the osmium soaked crystal. Data was collected on this crystal to attempt MAD phasing. Although the phasing was not successful the datasets are significantly improved relative to the native crystals and the metal soaks.