

Supplementary material for:

Structural and microstructural changes during anion exchange of CoAl layered double hydroxides: an *in situ* XRPD study

Rune E. Johnsen,^{a*} Frank Krumeich^b and Poul Norby^c

^aDepartment of Chemistry, University of Oslo, P.O. Box 1033, Blindern, NO-0315 Oslo, Norway. E-mail: r.e.johnsen@kjemi.uio.no

^bLaboratory of Inorganic Chemistry, ETH Zurich, CH-8093 Zurich, Switzerland.

^cMaterials Research Division, Risø National Laboratory for Sustainable Energy, Technical University of Denmark, P.O. Box 49, DK-4000 Roskilde, Denmark.

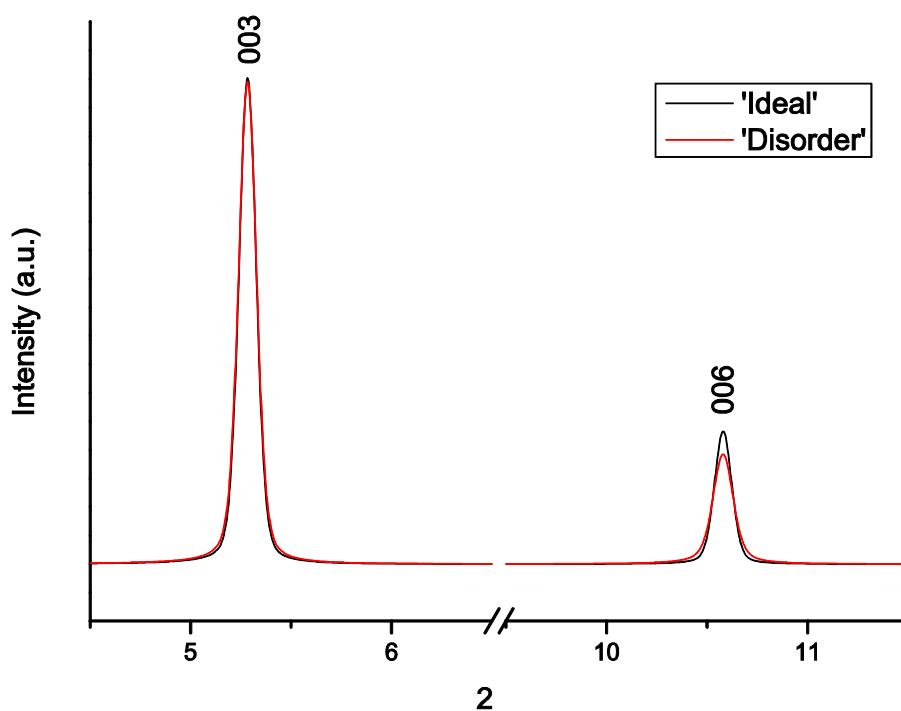


Figure S1 Principle *DIFFaX*+ simulations of a defect free CoAl-LDH phase ('Ideal') and a CoAl-LDH phase with disorder in the anion/water layer along the *c* axis ('Disorder').

Figure S1 shows the relative increase in the FWHM of the 006 diffraction peak compared to that of the 003 diffraction peak (*Fats-Waller* factors¹ were used in the model of the disorder in the anion/water layer).

¹Michael M. J. Treacy. *DIFFaX v1.807 Manual*, 29th August 2000.