



IUCrData

ISSN 2414-3146

2-Chloro-*N*-(4-phenyl-1,3-thiazol-2-yl)acetamide

K. Saravanan,^a R. Elancheran,^b S. Divakar,^c S. Kabilan^{a*} and S. Selvanayagam^{d‡}

^aDrug Discovery Lab, Department of Chemistry, Annamalai University, Annamalinagar, Chidambaram 608 002, India, ^bDrug Discovery Laboratory, Life Sciences Division, Institute of Advanced Study in Science and Technology, Guwahati, Assam 781 035, India, ^cDepartment of Pharmacology, PSG College of Pharmacy, Coimbatore 641 004, India, and ^dPG & Research Department of Physics, Government Arts College, Melur 625 106, India. *Correspondence e-mail: profskabilan@gmail.com

Received 24 May 2016

Accepted 30 May 2016

Edited by O. Blacque, University of Zürich, Switzerland

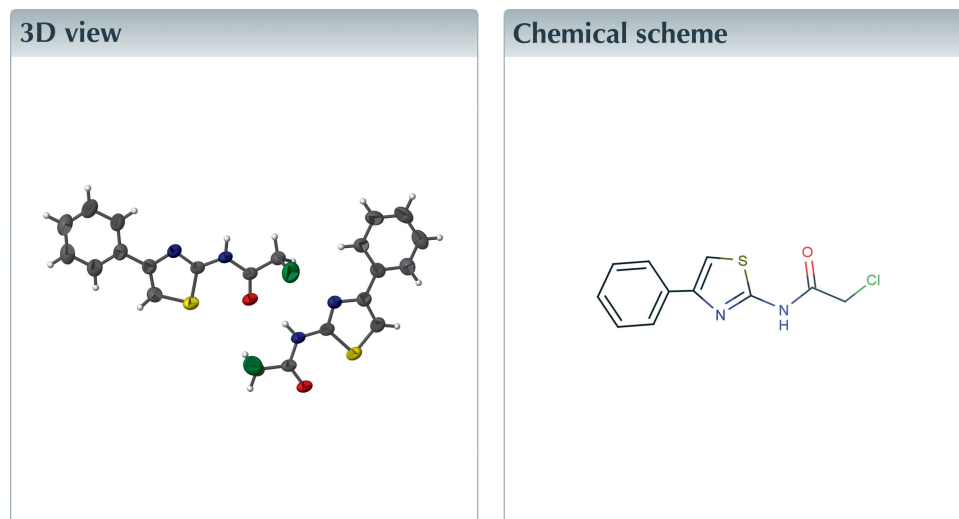
‡ Additional correspondence author, e-mail: s_selvanayagam@rediffmail.com.

Keywords: crystal structure; acetamide derivatives; N—H···O; C—H···N; C—H···O; hydrogen bonds.

CCDC reference: 1482671

Structural data: full structural data are available from iucrdata.iucr.org

The title acetamide, C₁₁H₉ClN₂OS, crystallizes with two independent molecules in the asymmetric unit whose geometrical features are similar. The phenyl ring is oriented at angles of 2.5 (1) and 6.2 (1)° with respect to the thiazole ring in the two molecules. In the crystal, molecules are linked *via* C—H···N hydrogen bonds which form C(10) chains along the [100] direction. The chains are linked by N—H···O and C—H···O hydrogen bonds, forming C(8) chains along the [100] direction.



Structure description

Acetamide derivatives are new potential PET tracers for imaging nucleotide pyrophosphatase/phosphodiesterase (Gao *et al.*, 2016). These derivatives act as anticholinesterase agents for a possible role in the management of Alzheimer's disease (Sun *et al.*, 2016). Acetamide derivatives possess anticonvulsant, antidepressant (Zhen *et al.*, 2015) and anti-HIV (Huang *et al.*, 2016) activities. In view of the many interesting applications of acetamide derivatives we synthesized the title compound and report herein its crystal structure.

The X-ray study confirmed the molecular structure and atomic connectivity, as illustrated in Fig. 1. The asymmetric unit contains two molecules (Fig. 1); their corresponding bond lengths and bond angles are in good agreement. Fig. 2 shows a superposition of the thiazole ring of both the molecules using *Qmol* (Gans & Shalloway, 2001); the r.m.s. deviation is 0.734 Å. The phenyl ring and thiazole rings are coplanar with the maximum deviation of 0.007 (3) and 0.003 (3) Å for atom C9 in molecules *A* and *B*, respectively. The phenyl ring is oriented at angles of 2.5 (1) and 6.2 (1)°, respectively, to the thiazole ring in molecules *A* and *B*. The molecular structure is influenced by four intramolecular hydrogen bonds of N—H···O, C—H···N and C—H···O types (Table 1).

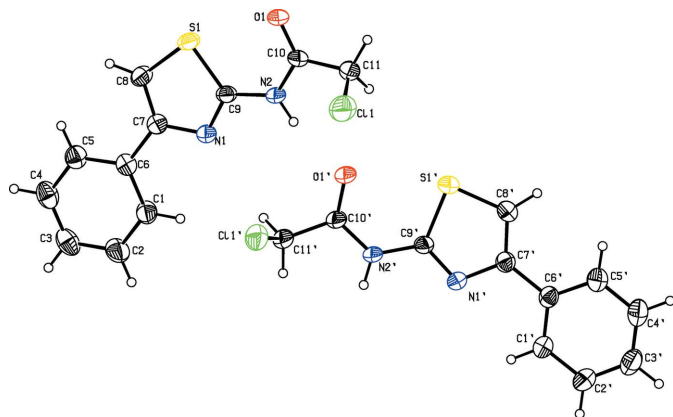


Figure 1
The molecular structure of the title compound, with atom labelling. Displacement ellipsoids are drawn at the 30% probability level.

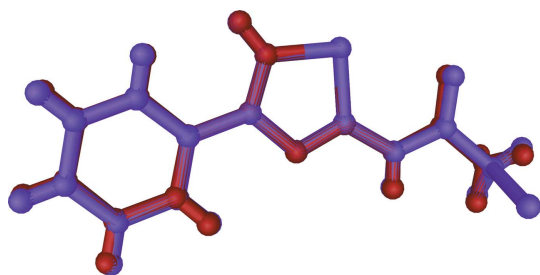


Figure 2
Superposition of molecule *A* (red) with the molecule *B* (purple).

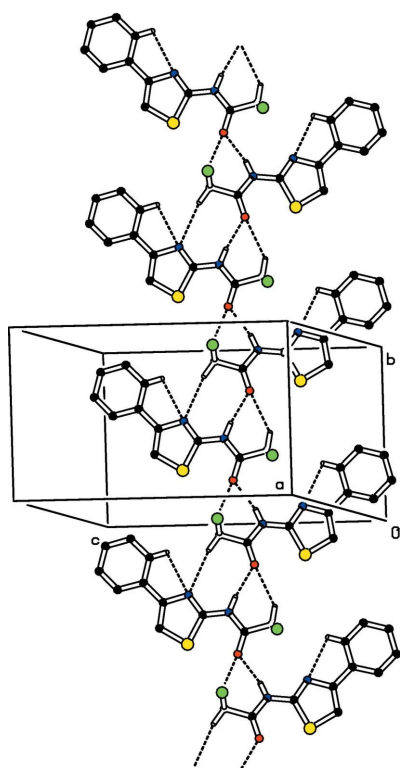


Figure 3
Crystal packing of the title compound, viewed along the *a* axis. The C—H...N, N—H...O and C—H...O hydrogen bonds are shown as dashed lines (see Table 1). For clarity, H atoms not involved in these hydrogen bonds have been omitted.

Table 1
Hydrogen-bond geometry (Å, °).

<i>D</i> —H... <i>A</i>	<i>D</i> —H	H... <i>A</i>	<i>D</i> ... <i>A</i>	<i>D</i> —H... <i>A</i>
C11—H11A...N1 ⁱ	0.97	2.62	3.565 (4)	165
N2'—H2'...O1 ⁱⁱ	0.86	1.98	2.835 (3)	172
C11'—H11C...O1 ⁱⁱ	0.97	2.48	3.329 (3)	146
N2—H2...O1'	0.86	1.98	2.825 (3)	168
C1—H1...N1	0.93	2.54	2.869 (4)	101
C1'—H1'...N1'	0.93	2.56	2.880 (4)	101
C11—H11B...O1'	0.97	2.55	3.204 (3)	125

Symmetry codes: (i) *x*, *y* − 1, *z*; (ii) *x*, *y* + 1, *z*.

Table 2
Experimental details.

Crystal data	
Chemical formula	C ₁₁ H ₉ ClN ₂ OS
<i>M_r</i>	252.71
Crystal system, space group	Triclinic, <i>P</i> $\bar{1}$
Temperature (K)	296
<i>a</i> , <i>b</i> , <i>c</i> (Å)	8.0406 (9), 9.2313 (14), 15.9898 (17)
α , β , γ (°)	85.693 (19), 76.448 (19), 87.082 (19)
<i>V</i> (Å ³)	1149.9 (3)
<i>Z</i>	4
Radiation type	Mo <i>K</i> α
μ (mm ^{−1})	0.49
Crystal size (mm)	0.22 × 0.20 × 0.18
Data collection	
Diffractometer	Bruker SMART APEX CCD area-detector
No. of measured, independent and observed [<i>I</i> > 2 σ (<i>I</i>)] reflections	6721, 5129, 3519
<i>R</i> _{int}	0.045
(<i>sin</i> θ / λ) _{max} (Å ^{−1})	0.649
Refinement	
<i>R</i> [<i>F</i> ² > 2 σ (<i>F</i> ²)], <i>wR</i> (<i>F</i> ²), <i>S</i>	0.055, 0.174, 1.03
No. of reflections	5129
No. of parameters	289
H-atom treatment	H-atom parameters constrained
$\Delta\rho_{max}$, $\Delta\rho_{min}$ (e Å ^{−3})	0.44, −0.52

Computer programs: *SMART* and *SAINT* (Bruker, 2002), *SHELXS97* (Sheldrick, 2008), *SHELXL2014* (Sheldrick, 2015), *ORTEP-3 for Windows* (Farrugia, 2012) and *PLATON* (Spek, 2009).

In the crystal, C—H...N hydrogen bonds link the molecules, forming *C*(10) chains propagating along $[\bar{1}00]$. In addition to this, N—H...O and C—H...O hydrogen bonds also link the molecules into *C*(8) chains propagating along $[100]$; see Fig. 3.

Synthesis and crystallization

To a solution of 4-phenylthiazol-2-amine (1.5 g, 8.52 mmol) in dry toluene (25 ml), K₂CO₃ (2.32 g, 17.04 mmol) and chloroacetyl chloride (0.67 ml, 8.52 mmol) was added. The reaction mixture was heated to reflux for 3 h. After completion of the reaction (monitored by pre-coated TLC), the reaction mixture was cooled to RT and diluted with DCM (45 ml). The organic layer was washed with saturated NaHCO₃ solution, water (10 ml × 3) and dried over Na₂SO₄. The filtrate was concen-

trated and the crude product mass was purified by precipitation using petroleum ether and diethyl ether (3:1) to give a colorless solid. This solid was recrystallized in ethyl acetate to yield colorless crystals of the title compound.

Refinement

Crystal data, data collection and structure refinement details are summarized in Table 2.

Acknowledgements

The authors are thankful for the funding support from the Department of Biotechnology – North East Collaboration (DBT–NEC) Research Project, Grant No. BT/252/NE/TBP/2011, New Delhi, India.

References

- Bruker (2002). *SMART* and *SAINT*. Bruker AXS Inc., Madison, Wisconsin, USA.
- Farrugia, L. J. (2012). *J. Appl. Cryst.* **45**, 849–854.
- Gans, J. D. & Shalloway, D. (2001). *J. Mol. Graph. Model.* **19**, 557–9, 609.
- Gao, M., Wang, M. & Zheng, Q. H. (2016). *Bioorg. Med. Chem. Lett.* **26**, 1371–1375.
- Huang, B., Li, X., Zhan, P., De Clercq, E., Daelemans, D., Pannecouque, C. & Liu, X. (2016). *Chem. Biol. Drug Des.* **87**, 283–289.
- Sheldrick, G. M. (2008). *Acta Cryst.* **A64**, 112–122.
- Sheldrick, G. M. (2015). *Acta Cryst.* **C71**, 3–8.
- Spek, A. L. (2009). *Acta Cryst.* **D65**, 148–155.
- Sun, Z. Q., Tu, L. X., Zhuo, F. J. & Liu, S. X. (2016). *Bioorg. Med. Chem. Lett.* **26**, 747–750.
- Zhen, X., Peng, Z., Zhao, S., Han, Y., Jin, Q. & Guan, L. (2015). *Acta Pharm. Sin. B.* **5**, 343–349.

full crystallographic data

IUCrData (2016). **1**, x160879 [doi:10.1107/S2414314616008798]

2-Chloro-*N*-(4-phenyl-1,3-thiazol-2-yl)acetamide

K. Saravanan, R. Elancheran, S. Divakar, S. Kabilan and S. Selvanayagam

2-Chloro-*N*-(4-phenyl-1,3-thiazol-2-yl)acetamide*Crystal data*

$C_{11}H_9ClN_2OS$	$Z = 4$
$M_r = 252.71$	$F(000) = 520$
Triclinic, $P\bar{1}$	$D_x = 1.460 \text{ Mg m}^{-3}$
$a = 8.0406 (9) \text{ \AA}$	Mo $K\alpha$ radiation, $\lambda = 0.71073 \text{ \AA}$
$b = 9.2313 (14) \text{ \AA}$	Cell parameters from 4218 reflections
$c = 15.9898 (17) \text{ \AA}$	$\theta = 3.2\text{--}26.8^\circ$
$\alpha = 85.693 (19)^\circ$	$\mu = 0.49 \text{ mm}^{-1}$
$\beta = 76.448 (19)^\circ$	$T = 296 \text{ K}$
$\gamma = 87.082 (19)^\circ$	Block, colourless
$V = 1149.9 (3) \text{ \AA}^3$	$0.22 \times 0.20 \times 0.18 \text{ mm}$

Data collection

Bruker SMART APEX CCD area-detector diffractometer	3519 reflections with $I > 2\sigma(I)$
Radiation source: fine-focus sealed tube	$R_{\text{int}} = 0.045$
ω scans	$\theta_{\text{max}} = 27.5^\circ$, $\theta_{\text{min}} = 3.2^\circ$
6721 measured reflections	$h = -10 \rightarrow 10$
5129 independent reflections	$k = -11 \rightarrow 7$
	$l = -20 \rightarrow 19$

Refinement

Refinement on F^2	Hydrogen site location: inferred from neighbouring sites
Least-squares matrix: full	H-atom parameters constrained
$R[F^2 > 2\sigma(F^2)] = 0.055$	$w = 1/[\sigma^2(F_o^2) + (0.0971P)^2]$
$wR(F^2) = 0.174$	where $P = (F_o^2 + 2F_c^2)/3$
$S = 1.03$	$(\Delta/\sigma)_{\text{max}} < 0.001$
5129 reflections	$\Delta\rho_{\text{max}} = 0.44 \text{ e \AA}^{-3}$
289 parameters	$\Delta\rho_{\text{min}} = -0.52 \text{ e \AA}^{-3}$
0 restraints	

Special details

Geometry. All esds (except the esd in the dihedral angle between two l.s. planes) are estimated using the full covariance matrix. The cell esds are taken into account individually in the estimation of esds in distances, angles and torsion angles; correlations between esds in cell parameters are only used when they are defined by crystal symmetry. An approximate (isotropic) treatment of cell esds is used for estimating esds involving l.s. planes.

Fractional atomic coordinates and isotropic or equivalent isotropic displacement parameters (\AA^2)

	<i>x</i>	<i>y</i>	<i>z</i>	$U_{\text{iso}}^*/U_{\text{eq}}$
S1	0.41465 (9)	0.74959 (7)	0.15473 (5)	0.0538 (2)

O1	0.6150 (3)	0.66650 (18)	0.27078 (12)	0.0597 (5)
N1	0.4150 (3)	1.0270 (2)	0.15895 (13)	0.0471 (5)
N2	0.5584 (3)	0.9072 (2)	0.25671 (14)	0.0519 (5)
H2	0.5680	0.9893	0.2769	0.062*
Cl1	0.94512 (12)	0.88155 (11)	0.28862 (7)	0.0922 (3)
C1	0.2855 (4)	1.2645 (3)	0.06344 (19)	0.0622 (7)
H1	0.3388	1.2834	0.1070	0.075*
C2	0.2265 (5)	1.3788 (4)	0.0159 (2)	0.0750 (9)
H2A	0.2410	1.4739	0.0277	0.090*
C3	0.1468 (4)	1.3534 (4)	-0.0483 (2)	0.0714 (9)
H3	0.1069	1.4307	-0.0799	0.086*
C4	0.1266 (4)	1.2125 (4)	-0.0654 (2)	0.0695 (8)
H4	0.0721	1.1944	-0.1087	0.083*
C5	0.1860 (3)	1.0988 (3)	-0.01938 (18)	0.0599 (7)
H5	0.1726	1.0043	-0.0325	0.072*
C6	0.2660 (3)	1.1213 (3)	0.04659 (16)	0.0493 (6)
C7	0.3300 (3)	0.9994 (3)	0.09627 (16)	0.0467 (5)
C8	0.3176 (3)	0.8557 (3)	0.08623 (18)	0.0554 (6)
H8	0.2633	0.8197	0.0472	0.066*
C9	0.4664 (3)	0.9065 (2)	0.19303 (16)	0.0460 (5)
C10	0.6333 (4)	0.7901 (3)	0.28888 (16)	0.0518 (6)
C11	0.7436 (5)	0.8203 (3)	0.3497 (2)	0.0696 (8)
H11A	0.7600	0.7325	0.3845	0.084*
H11B	0.6877	0.8940	0.3879	0.084*
S1'	0.69249 (11)	1.20434 (7)	0.49270 (4)	0.0608 (2)
O1'	0.6147 (3)	1.15393 (19)	0.33948 (13)	0.0642 (5)
N1'	0.7240 (3)	1.4819 (2)	0.47406 (13)	0.0466 (5)
N2'	0.6465 (3)	1.3901 (2)	0.35679 (13)	0.0468 (5)
H2'	0.6406	1.4773	0.3344	0.056*
Cl1'	0.76597 (12)	1.26828 (10)	0.14499 (5)	0.0814 (3)
C1'	0.8038 (4)	1.6899 (3)	0.58315 (19)	0.0668 (8)
H1'	0.7653	1.7229	0.5344	0.080*
C2'	0.8529 (5)	1.7902 (4)	0.6332 (2)	0.0803 (10)
H2'1	0.8495	1.8890	0.6168	0.096*
C3'	0.9056 (4)	1.7439 (4)	0.7057 (2)	0.0743 (9)
H3'	0.9367	1.8108	0.7395	0.089*
C4'	0.9128 (4)	1.6001 (4)	0.7287 (2)	0.0722 (9)
H4'	0.9494	1.5688	0.7783	0.087*
C5'	0.8667 (4)	1.4990 (4)	0.67955 (18)	0.0635 (7)
H5'	0.8725	1.4006	0.6964	0.076*
C6'	0.8115 (3)	1.5434 (3)	0.60490 (15)	0.0499 (6)
C8'	0.7508 (4)	1.2908 (3)	0.57165 (17)	0.0616 (7)
H8'	0.7719	1.2440	0.6219	0.074*
C7'	0.7626 (3)	1.4359 (3)	0.55226 (16)	0.0484 (6)
C9'	0.6865 (3)	1.3722 (2)	0.43644 (15)	0.0442 (5)
C10'	0.6162 (3)	1.2810 (3)	0.31178 (17)	0.0493 (6)
C11'	0.5852 (4)	1.3246 (3)	0.22428 (18)	0.0606 (7)
H11C	0.5675	1.4292	0.2180	0.073*

H11D 0.4836 1.2792 0.2172 0.073*

Atomic displacement parameters (Å²)

	U^{11}	U^{22}	U^{33}	U^{12}	U^{13}	U^{23}
S1	0.0635 (4)	0.0347 (3)	0.0662 (4)	-0.0070 (3)	-0.0186 (3)	-0.0062 (3)
O1	0.0932 (14)	0.0277 (9)	0.0627 (11)	-0.0032 (8)	-0.0277 (10)	-0.0004 (7)
N1	0.0563 (12)	0.0366 (11)	0.0501 (11)	0.0005 (8)	-0.0161 (10)	-0.0035 (8)
N2	0.0778 (14)	0.0266 (10)	0.0575 (12)	-0.0018 (9)	-0.0284 (11)	-0.0016 (8)
C11	0.0911 (6)	0.0810 (6)	0.1208 (8)	-0.0078 (5)	-0.0587 (6)	0.0006 (5)
C1	0.0819 (19)	0.0519 (16)	0.0561 (15)	0.0180 (14)	-0.0240 (15)	-0.0127 (12)
C2	0.100 (2)	0.0563 (18)	0.0677 (18)	0.0238 (16)	-0.0231 (18)	-0.0052 (14)
C3	0.0649 (18)	0.082 (2)	0.0639 (18)	0.0227 (16)	-0.0162 (15)	0.0076 (16)
C4	0.0519 (16)	0.096 (3)	0.0615 (17)	-0.0006 (15)	-0.0196 (14)	0.0078 (16)
C5	0.0510 (14)	0.0690 (18)	0.0610 (16)	-0.0056 (12)	-0.0153 (13)	-0.0022 (13)
C6	0.0421 (12)	0.0552 (15)	0.0483 (13)	0.0050 (10)	-0.0075 (11)	-0.0026 (11)
C7	0.0437 (12)	0.0469 (14)	0.0483 (13)	0.0017 (10)	-0.0079 (11)	-0.0059 (10)
C8	0.0569 (15)	0.0481 (15)	0.0657 (16)	-0.0042 (11)	-0.0208 (13)	-0.0100 (12)
C9	0.0536 (13)	0.0337 (12)	0.0492 (12)	-0.0032 (10)	-0.0092 (11)	-0.0015 (10)
C10	0.0728 (16)	0.0315 (12)	0.0519 (14)	-0.0019 (11)	-0.0179 (13)	0.0020 (10)
C11	0.111 (2)	0.0408 (15)	0.0692 (18)	-0.0006 (15)	-0.0469 (18)	0.0018 (13)
S1'	0.0902 (5)	0.0375 (4)	0.0573 (4)	-0.0053 (3)	-0.0232 (4)	0.0022 (3)
O1'	0.1028 (15)	0.0296 (9)	0.0690 (12)	-0.0025 (9)	-0.0376 (11)	-0.0031 (8)
N1'	0.0553 (12)	0.0376 (10)	0.0483 (11)	-0.0034 (8)	-0.0133 (9)	-0.0060 (8)
N2'	0.0636 (12)	0.0273 (9)	0.0530 (11)	-0.0020 (8)	-0.0204 (10)	-0.0024 (8)
C11'	0.0989 (6)	0.0854 (6)	0.0611 (5)	-0.0138 (5)	-0.0171 (4)	-0.0099 (4)
C1'	0.090 (2)	0.0596 (18)	0.0573 (16)	-0.0143 (15)	-0.0277 (16)	-0.0062 (13)
C2'	0.115 (3)	0.062 (2)	0.070 (2)	-0.0206 (18)	-0.028 (2)	-0.0120 (16)
C3'	0.078 (2)	0.086 (2)	0.0618 (18)	-0.0208 (17)	-0.0133 (16)	-0.0223 (17)
C4'	0.074 (2)	0.092 (3)	0.0545 (16)	-0.0065 (17)	-0.0194 (15)	-0.0140 (16)
C5'	0.0713 (18)	0.0669 (19)	0.0530 (15)	-0.0022 (14)	-0.0145 (14)	-0.0088 (13)
C6'	0.0498 (13)	0.0573 (15)	0.0399 (12)	-0.0065 (11)	-0.0022 (11)	-0.0089 (10)
C8'	0.0834 (19)	0.0532 (17)	0.0498 (14)	-0.0042 (13)	-0.0200 (14)	0.0033 (12)
C7'	0.0498 (13)	0.0512 (14)	0.0428 (12)	-0.0022 (10)	-0.0074 (11)	-0.0044 (10)
C9'	0.0510 (13)	0.0352 (12)	0.0458 (12)	0.0007 (9)	-0.0103 (11)	-0.0032 (9)
C10'	0.0606 (15)	0.0331 (13)	0.0576 (14)	0.0004 (10)	-0.0203 (12)	-0.0046 (10)
C11'	0.085 (2)	0.0399 (14)	0.0648 (16)	-0.0004 (12)	-0.0335 (15)	-0.0056 (12)

Geometric parameters (Å, °)

S1—C8	1.712 (3)	S1'—C8'	1.708 (3)
S1—C9	1.720 (2)	S1'—C9'	1.737 (2)
O1—C10	1.222 (3)	O1'—C10'	1.222 (3)
N1—C9	1.294 (3)	N1'—C9'	1.298 (3)
N1—C7	1.383 (3)	N1'—C7'	1.389 (3)
N2—C10	1.338 (3)	N2'—C10'	1.344 (3)
N2—C9	1.393 (3)	N2'—C9'	1.381 (3)
N2—H2	0.8600	N2'—H2'	0.8600

C11—C11	1.780 (4)	C11'—C11'	1.774 (3)
C1—C2	1.384 (4)	C1'—C6'	1.373 (4)
C1—C6	1.392 (4)	C1'—C2'	1.397 (4)
C1—H1	0.9300	C1'—H1'	0.9300
C2—C3	1.370 (5)	C2'—C3'	1.358 (5)
C2—H2A	0.9300	C2'—H2'1	0.9300
C3—C4	1.375 (5)	C3'—C4'	1.352 (5)
C3—H3	0.9300	C3'—H3'	0.9300
C4—C5	1.367 (4)	C4'—C5'	1.381 (4)
C4—H4	0.9300	C4'—H4'	0.9300
C5—C6	1.391 (4)	C5'—C6'	1.395 (4)
C5—H5	0.9300	C5'—H5'	0.9300
C6—C7	1.470 (3)	C6'—C7'	1.473 (4)
C7—C8	1.359 (4)	C8'—C7'	1.354 (4)
C8—H8	0.9300	C8'—H8'	0.9300
C10—C11	1.510 (4)	C10'—C11'	1.500 (4)
C11—H11A	0.9700	C11'—H11C	0.9700
C11—H11B	0.9700	C11'—H11D	0.9700
C8—S1—C9	88.17 (12)	C8'—S1'—C9'	88.18 (13)
C9—N1—C7	110.4 (2)	C9'—N1'—C7'	110.5 (2)
C10—N2—C9	125.1 (2)	C10'—N2'—C9'	124.7 (2)
C10—N2—H2	117.4	C10'—N2'—H2'	117.6
C9—N2—H2	117.4	C9'—N2'—H2'	117.6
C2—C1—C6	120.6 (3)	C6'—C1'—C2'	121.0 (3)
C2—C1—H1	119.7	C6'—C1'—H1'	119.5
C6—C1—H1	119.7	C2'—C1'—H1'	119.5
C3—C2—C1	120.7 (3)	C3'—C2'—C1'	120.1 (3)
C3—C2—H2A	119.7	C3'—C2'—H2'1	119.9
C1—C2—H2A	119.7	C1'—C2'—H2'1	119.9
C2—C3—C4	119.3 (3)	C4'—C3'—C2'	119.8 (3)
C2—C3—H3	120.4	C4'—C3'—H3'	120.1
C4—C3—H3	120.4	C2'—C3'—H3'	120.1
C5—C4—C3	120.5 (3)	C3'—C4'—C5'	120.9 (3)
C5—C4—H4	119.8	C3'—C4'—H4'	119.5
C3—C4—H4	119.8	C5'—C4'—H4'	119.5
C4—C5—C6	121.5 (3)	C4'—C5'—C6'	120.5 (3)
C4—C5—H5	119.2	C4'—C5'—H5'	119.7
C6—C5—H5	119.2	C6'—C5'—H5'	119.7
C5—C6—C1	117.5 (3)	C1'—C6'—C5'	117.6 (3)
C5—C6—C7	121.7 (3)	C1'—C6'—C7'	121.8 (2)
C1—C6—C7	120.8 (2)	C5'—C6'—C7'	120.6 (3)
C8—C7—N1	114.1 (2)	C7'—C8'—S1'	111.8 (2)
C8—C7—C6	126.2 (2)	C7'—C8'—H8'	124.1
N1—C7—C6	119.7 (2)	S1'—C8'—H8'	124.1
C7—C8—S1	111.3 (2)	C8'—C7'—N1'	114.1 (2)
C7—C8—H8	124.3	C8'—C7'—C6'	126.6 (2)
S1—C8—H8	124.3	N1'—C7'—C6'	119.3 (2)

N1—C9—N2	120.7 (2)	N1'—C9'—N2'	121.4 (2)
N1—C9—S1	116.1 (2)	N1'—C9'—S1'	115.38 (19)
N2—C9—S1	123.19 (18)	N2'—C9'—S1'	123.22 (18)
O1—C10—N2	123.0 (3)	O1'—C10'—N2'	122.7 (2)
O1—C10—C11	121.6 (2)	O1'—C10'—C11'	121.6 (2)
N2—C10—C11	115.4 (2)	N2'—C10'—C11'	115.7 (2)
C10—C11—C11	109.2 (2)	C10'—C11'—C11'	108.7 (2)
C10—C11—H11A	109.8	C10'—C11'—H11C	110.0
C11—C11—H11A	109.8	C11'—C11'—H11C	110.0
C10—C11—H11B	109.8	C10'—C11'—H11D	110.0
C11—C11—H11B	109.8	C11'—C11'—H11D	110.0
H11A—C11—H11B	108.3	H11C—C11'—H11D	108.3
C6—C1—C2—C3	0.4 (5)	C6'—C1'—C2'—C3'	-1.5 (5)
C1—C2—C3—C4	-0.3 (5)	C1'—C2'—C3'—C4'	1.0 (5)
C2—C3—C4—C5	-0.4 (5)	C2'—C3'—C4'—C5'	-0.2 (5)
C3—C4—C5—C6	0.9 (4)	C3'—C4'—C5'—C6'	0.0 (5)
C4—C5—C6—C1	-0.8 (4)	C2'—C1'—C6'—C5'	1.3 (5)
C4—C5—C6—C7	180.0 (2)	C2'—C1'—C6'—C7'	-179.1 (3)
C2—C1—C6—C5	0.2 (4)	C4'—C5'—C6'—C1'	-0.5 (4)
C2—C1—C6—C7	179.4 (3)	C4'—C5'—C6'—C7'	179.9 (3)
C9—N1—C7—C8	1.1 (3)	C9'—S1'—C8'—C7'	-0.1 (2)
C9—N1—C7—C6	-177.7 (2)	S1'—C8'—C7'—N1'	0.5 (3)
C5—C6—C7—C8	-1.3 (4)	S1'—C8'—C7'—C6'	-179.2 (2)
C1—C6—C7—C8	179.5 (3)	C9'—N1'—C7'—C8'	-0.7 (3)
C5—C6—C7—N1	177.4 (2)	C9'—N1'—C7'—C6'	179.0 (2)
C1—C6—C7—N1	-1.8 (4)	C1'—C6'—C7'—C8'	-173.7 (3)
N1—C7—C8—S1	-0.6 (3)	C5'—C6'—C7'—C8'	5.9 (4)
C6—C7—C8—S1	178.07 (19)	C1'—C6'—C7'—N1'	6.6 (4)
C9—S1—C8—C7	0.0 (2)	C5'—C6'—C7'—N1'	-173.8 (2)
C7—N1—C9—N2	178.7 (2)	C7'—N1'—C9'—N2'	-178.8 (2)
C7—N1—C9—S1	-1.1 (3)	C7'—N1'—C9'—S1'	0.7 (3)
C10—N2—C9—N1	-172.1 (2)	C10'—N2'—C9'—N1'	176.0 (2)
C10—N2—C9—S1	7.7 (4)	C10'—N2'—C9'—S1'	-3.5 (4)
C8—S1—C9—N1	0.7 (2)	C8'—S1'—C9'—N1'	-0.3 (2)
C8—S1—C9—N2	-179.2 (2)	C8'—S1'—C9'—N2'	179.1 (2)
C9—N2—C10—O1	-6.9 (4)	C9'—N2'—C10'—O1'	3.0 (4)
C9—N2—C10—C11	173.0 (2)	C9'—N2'—C10'—C11'	-176.5 (2)
O1—C10—C11—C11	100.9 (3)	O1'—C10'—C11'—C11'	-71.5 (3)
N2—C10—C11—C11	-79.0 (3)	N2'—C10'—C11'—C11'	108.1 (2)

Hydrogen-bond geometry (Å, °)

<i>D</i> —H... <i>A</i>	<i>D</i> —H	H... <i>A</i>	<i>D</i> ... <i>A</i>	<i>D</i> —H... <i>A</i>
C11—H11A...N1 ⁱ	0.97	2.62	3.565 (4)	165
N2'—H2'...O1 ⁱⁱ	0.86	1.98	2.835 (3)	172
C11'—H11C...O1 ⁱⁱ	0.97	2.48	3.329 (3)	146
N2—H2...O1'	0.86	1.98	2.825 (3)	168

C1—H1…N1	0.93	2.54	2.869 (4)	101
C1'—H1'…N1'	0.93	2.56	2.880 (4)	101
C11—H11B…O1'	0.97	2.55	3.204 (3)	125

Symmetry codes: (i) $x, y-1, z$; (ii) $x, y+1, z$.