

addenda and errata

**Structures of mono-unsaturated triacyl-
glycerols. II. The β_2 polymorph.
Corrigendum**
Jan B. van Mechelen,* Rene Peschar and Henk Schenk

 University of Amsterdam, HIMS/FNWI/Kristallografie, Valckenierstraat 65, 1018 XE
Amsterdam, The Netherlands

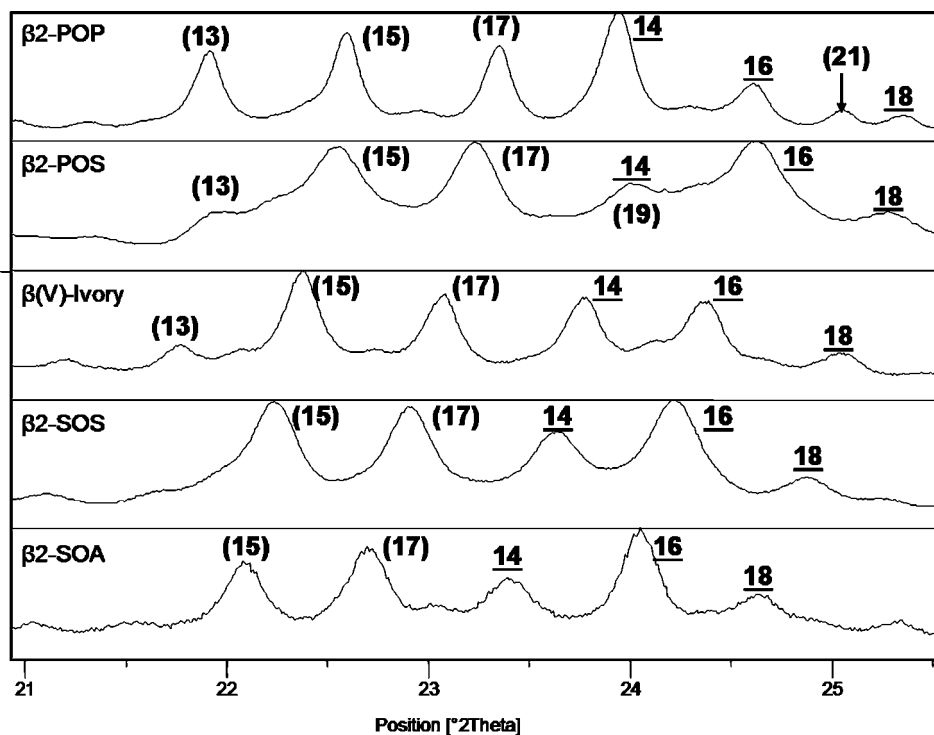
Correspondence e-mail: janvm@science.uva.nl

 A replacement Fig. 3 to the paper by van Mechelen *et al.* (2006), *Acta Cryst. B62*, 1131–1138 is given.

 Fig. 3 in the article by van Mechelen *et al.* [(2006b), *Acta Cryst. B62*, 1131–1138] is actually a duplicate of Fig. 3 from van Mechelen *et al.* [(2006a), *Acta Cryst. B62*, 1121–1130]. The correct figure is given here.

References

- Mechelen, J. B. van, Peschar, R. & Schenk, H. (2006a). *Acta Cryst. B62*, 1121–1130.
- Mechelen, J. B. van, Peschar, R. & Schenk, H. (2006b). *Acta Cryst. B62*, 1131–1138.


Figure 3

 Higher-angle part of Fig. 2 showing the differences between the β_2 patterns. $(1, k, -1)$ peaks are labeled (k) and $(0, k, 2)$ peaks are labeled k .