

Three polytypes of lapachol, a natural pigment with promising pharmacological properties.

Corrigendum

Natasha Di Benedetto,^{a,‡} Mario A. Macías,^b Noelia Méndez,^{c,a}
 Miguel Martínez Cabrera^{d,e} and Leopoldo Suescun^{a*}

Edited by A. Nangia, CSIR–National Chemical Laboratory, India

‡ Currently at Nanoionics and Fuel Cells, Catalonia Institute for Energy Research (IREC), Jardins de les Dones de Negre 1, Sant Adrià de Besòs, 08930 Barcelona, Spain.

Keywords: crystal structure; lapachol; polymorphism; layer stacking.

^aCrysmat-Lab/DETEMA, Facultad de Química, Universidad de la República, Av. Gral. Flores 2124, Montevideo 11800, Uruguay, ^bCrystallography and Chemistry of Materials, CrisQuimMat, Department of Chemistry, Universidad de los Andes, Bogotá 111711, Colombia, ^cÁrea de Físicoquímica/DETEMA, Facultad de Química, Universidad de la República, Av. Gral. Flores 2124, Montevideo 11800, Uruguay, ^dFacultad de Ingeniería-Filial Ayolas, Universidad Nacional de Asunción, Av. Arary, Misiones, Paraguay, and ^eCentro de Investigaciones de Productos Naturales y de Síntesis, Mariano Roque Alonso, Paraguay. *Correspondence e-mail: leopoldo@fq.edu.uy

In the original paper by Di Benedetto *et al.* (2026), Fig. 10 showed LAPA II and LAPA III simulated powder patterns exchanged. The correct Fig. 10 is as follows

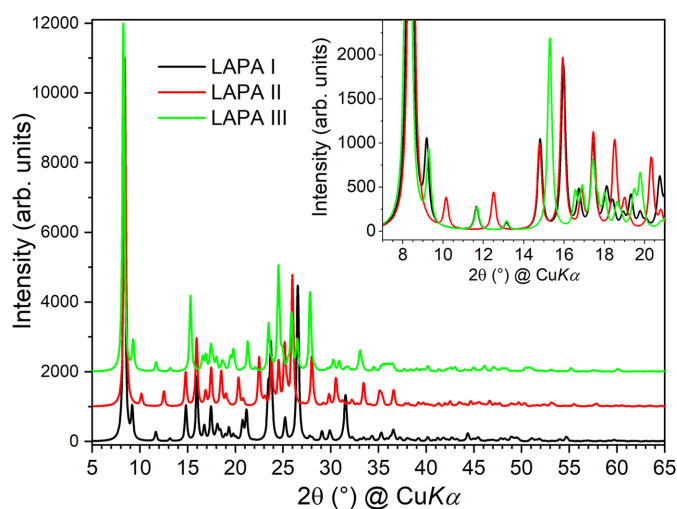


Figure 10
 Simulated powder X-ray diffraction patterns of LAPA I, II and III calculated by *Mercury* from the RT crystal structures reported in this work. The inset shows the low 2θ range where the main differences in peak position are observed.

References

Di Benedetto, N., Macías, M. A., Méndez, N., Martínez Cabrera, M. & Suescun, L. (2026). *Acta Cryst.* **B82**, 54–60.