

Acta Crystallographica Section E

Structure Reports

Online

ISSN 1600-5368

Di- μ -chlorido-bis[dichlorido(*N,N*-diethylacetamidinato)(*N,N*-diethylacetamidine)titanium(IV)] acetonitrile disolvate

Nicholas A. Straessler,^a M. Tyler Caudle^b and Thomas L. Groy^{c*}

^aATK Launch Systems, Brigham City, UT 84302, USA, ^bBASF Catalysts LLC, Iselin, NJ 08830, USA, and ^cDepartment of Chemistry and Biochemistry, Arizona State University, Tempe, AZ 85287, USA
Correspondence e-mail: tgroy@asu.edu

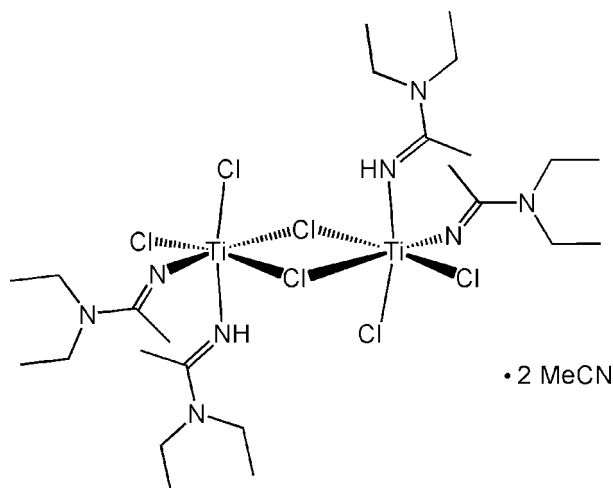
Received 16 November 2007; accepted 22 November 2007

Key indicators: single-crystal X-ray study; $T = 298$ K; mean $\sigma(\text{C}-\text{C}) = 0.006$ Å; R factor = 0.045; wR factor = 0.134; data-to-parameter ratio = 18.0.

In the centrosymmetric title compound $[\text{Ti}_2\text{Cl}_6(\text{C}_6\text{H}_{13}\text{N}_2)_2\text{-(C}_6\text{H}_{14}\text{N}_2)_2]\cdot 2\text{C}_2\text{H}_3\text{N}$, an inversion center relates the two Ti atoms which display a distorted octahedral coordination geometry. There are two uncoordinated acetonitrile solvent molecules per molecule of title compound in the crystal structure.

Related literature

For the structure, see: Dunn *et al.* (1994); Guiducci *et al.* (2001); Lewkebandara *et al.* (1994); Nielson *et al.* (2001). For the reaction mechanism, see: Bradley & Ganorkar (1968); Chandra *et al.* (1970); Forsberg *et al.* (1987); Maresca *et al.* (1986); Rouschias & Wilkinson (1968).



Experimental

Crystal data

$[\text{Ti}_2\text{Cl}_6(\text{C}_6\text{H}_{13}\text{N}_2)_2(\text{C}_6\text{H}_{14}\text{N}_2)_2]\cdot 2\text{C}_2\text{H}_3\text{N}$
 $M_r = 845.36$
 Triclinic, $P\bar{1}$
 $a = 9.6217$ (6) Å
 $b = 11.1812$ (7) Å
 $c = 11.2298$ (8) Å
 $\alpha = 95.680$ (1)°
 $\beta = 105.192$ (1)°
 $\gamma = 106.938$ (1)°
 $V = 1095.03$ (12) Å³
 $Z = 1$
 Mo $K\alpha$ radiation
 $\mu = 0.76$ mm⁻¹
 $T = 298$ (2) K
 $0.30 \times 0.15 \times 0.15$ mm

Data collection

Bruker SMART APEX diffractometer
 Absorption correction: multi-scan (SADABS; Sheldrick, 2003a)
 $T_{\min} = 0.870$, $T_{\max} = 0.890$
 8928 measured reflections
 3871 independent reflections
 2999 reflections with $I > 2\sigma(I)$
 $R_{\text{int}} = 0.045$

Refinement

$R[F^2 > 2\sigma(F^2)] = 0.045$
 $wR(F^2) = 0.134$
 $S = 1.02$
 3871 reflections
 215 parameters
 H-atom parameters constrained
 $\Delta\rho_{\text{max}} = 0.82$ e Å⁻³
 $\Delta\rho_{\text{min}} = -0.28$ e Å⁻³

Data collection: SMART (Bruker, 2003); cell refinement: SAINT (Bruker, 2003); data reduction: SAINT; program(s) used to solve structure: SHELXS97 (Sheldrick, 1997); program(s) used to refine structure: SHELXL97 (Sheldrick, 1997); molecular graphics: SHELXTL (Sheldrick, 2003b); software used to prepare material for publication: SHELXTL.

We express our gratitude to the National Science Foundation for their contribution toward the purchase of the single-crystal instrumentation used in this study through Award No. CHE-9808440.

Supplementary data and figures for this paper are available from the IUCr electronic archives (Reference: LX2036).

References

- Bradley, D. C. & Ganorkar, M. C. (1968). *Chem. Ind. (London)*, **44**, 1521–1522.
 Bruker (2003). SMART (Version 5.632) and SAINT (Version 6.45A). Bruker AXS Inc., Madison, Wisconsin, USA.
 Chandra, G., Jenkins, A. D., Lappert, M. F. & Srivastava, R. C. (1970). *J. Chem. Soc. A*, 2550–2558.
 Dunn, S. C., Batsanov, A. S. & Mountford, P. (1994). *J. Chem. Soc. Chem. Commun.* pp. 2007–2008.
 Forsberg, J. H., Spaziano, V. T., Balasubramanian, T. M., Liu, G. K., Kinsley, S. A., Duckworth, C. A., Poteruca, J. J., Brown, P. S. & Miller, J. L. (1987). *J. Org. Chem.* **52**, 1017–1021.
 Guiducci, A. E., Cowley, A. R., Skinner, M. E. G. & Mountford, P. (2001). *J. Chem. Soc. Dalton Trans.* pp. 1392–1394.
 Lewkebandara, T. S., Sheridan, P. H., Heeg, M. J., Rheingold, A. L. & Winter, C. H. (1994). *Inorg. Chem.* **33**, 5879–89.
 Maresca, L., Natile, G., Intini, F. P., Gasparrini, F., Tiripicchio, A. & Tiripicchio-Camellini, M. (1986). *J. Am. Chem. Soc.* **108**, 1180–1185.
 Nielson, A. J., Glenney, M. W. & Rickard, C. E. F. (2001). *J. Chem. Soc. Dalton Trans.* pp. 232–239.
 Rouschias, G. & Wilkinson, G. (1968). *J. Chem. Soc. A*, 489–496.
 Sheldrick, G. M. (1997). SHELXS97 and SHELXL97. University of Göttingen, Germany.
 Sheldrick, G. M. (2003a). SADABS. Version 2.10. University of Göttingen, Germany.
 Sheldrick, G. M. (2003b). SHELXTL. Version 6.14. Bruker AXS Inc., Madison, Wisconsin, USA.

supporting information

Acta Cryst. (2008). E64, m20 [https://doi.org/10.1107/S1600536807062022]

Di- μ -chlorido-bis[dichlorido(*N,N*-diethylacetamidinato)(*N,N*-diethylacetamidine)titanium(IV)] acetonitrile disolvate

Nicholas A. Straessler, M. Tyler Caudle and Thomas L. Groy

S1. Comment

The structure of title compound, (I) was solved as part of an investigation into the effects of nitriles on *N,N*-dialkylamido titanium(IV) complexes. Compound (I) is a dimeric molecule in which two symmetrically equivalent titanium atoms are each coordinated by one anionic diethylacetamidino group (N1), one neutral diethylacetamidine ligand (N3), two terminal chlorides (Cl2 and Cl3), and two equivalent bridging chlorides (Cl1). This gives a pseudo-octahedral configuration about each titanium center. The acetamidine and acetamidino ligands are oriented in *cis* coordination positions.

The Ti₂Cl₂ unit of (I) is distorted such that the Ti1—Cl1 bond that is *trans* to the diethylacetamidino ligand is significantly longer than the Ti—Cl1 bond that is *trans* to Cl3 (2.7002 (8) Å *versus*. 2.4557 (8) Å). This is consistent with the greater sigma-electron donating ability of the acetamidino ligand relative to the Cl. The Ti—Cl1—Ti bond angle is 102.96 (3)°, similar to that of other dichloro-bridged Ti⁴⁺ compounds (Nielson *et al.*, 2001). The terminal titanium–chloride bond lengths (Ti—Cl2 = 2.3882 (8) Å and Ti—Cl3 = 2.3511 (9) Å) are shorter than the bridging Ti—Cl1 bonds, and are within the normal range for such linkages.

In general, the ligands in (I) bend away from the diethylacetamidino group resulting in bond angles greater than the ideal 90° for octahedral complexes {N1—Ti—Cl3 = 101.24 (9)°, N1—Ti—Cl1 = 95.57 (9)°, N1—Ti—Cl2 = 95.51 (8)°, N1—Ti—N3 = 94.42 (10)°}. This can be attributed to electrostatic repulsion caused by substantial pi-electron donation from the diethylacetamidino nitrogen to the empty 3 d orbitals on Ti⁴⁺. The approximately linear Ti—N1—C1 bond angle (165.7 (2)°) and the short Ti—N1 bond length (1.751 (2) Å) indicate significant Ti—N1 multiple-bond character analogous to those observed in titanium(IV) imides (Guiducci *et al.*, 2001; Lewkebandara *et al.*, 1994; Dunn *et al.*, 1994). The Ti—N3 acetamidine bond length is 2.130 (2) Å, which is 0.379 Å longer than the Ti—N1 acetamidino bond length at 1.751 (2) Å, clearly supporting multiple-bond character in the Ti—N1 bond.

Formation of metal–amidine complexes has been shown to occur by two different mechanisms: (1) acetonitrile insertion into metal–amide bonds (Bradley & Ganorkar, 1968; Chandra *et al.*, 1970); (2) nucleophilic attack by free amine on coordinated nitriles in the presence of metal ions (Forsberg *et al.*, 1987; Rouschias & Wilkinson, 1968; Maresca *et al.*, 1986). However, secondary amines such as diethylamine do not react with nitriles in the absence of metal ions. The addition of TiCl₄ to acetonitrile results in a yellow solvate formed by coordination of CH₃CN to the titanium atom. We speculate that (I) then most likely forms *via* mechanism 2 because the metal–nitrogen linkage to the nitrile is established before addition of diethylamine. Furthermore, direct insertion of CH₃CN has been reported to only occur slowly (Bradley & Ganorkar, 1968), whereas we observe reaction of diethylamine with the TiCl₄–acetonitrile solvate to occur immediately.

S2. Experimental

While stirring under an atmosphere of nitrogen, 2 ml (18.24 mmol) of TiCl_4 were added to approximately 50 ml of anhydrous acetonitrile in a Schlenk flask. To the resulting bright yellow solution was added 5.66 ml (54.71 mmol) of diethylamine. The exothermic reaction turned dark orange and white solid began to precipitate immediately. After twelve hours of stirring, solid white diethylammonium chloride was removed by filtration under nitrogen, and the filtrate was concentrated by intermittent evaporation with a stream of nitrogen over a period of four days. Removal of almost half of the solvent yielded X-ray quality crystals of **I**.

S3. Refinement

Hydrogen atoms were positioned geometrically and allowed to ride on their bonding partners with C—H distances = 0.96 Å and $U_{\text{iso}}(\text{H}) = 1.5U_{\text{eq}}(\text{C})$ for the methyl H atoms, C—H distances = 0.97 Å and $U_{\text{iso}}(\text{H}) = 1.2U_{\text{eq}}(\text{C})$ for the methylene H atoms, and N—H distance = 0.86 Å and $U_{\text{iso}}(\text{H}) = 1.2U_{\text{eq}}(\text{N})$ for the amino hydrogen.

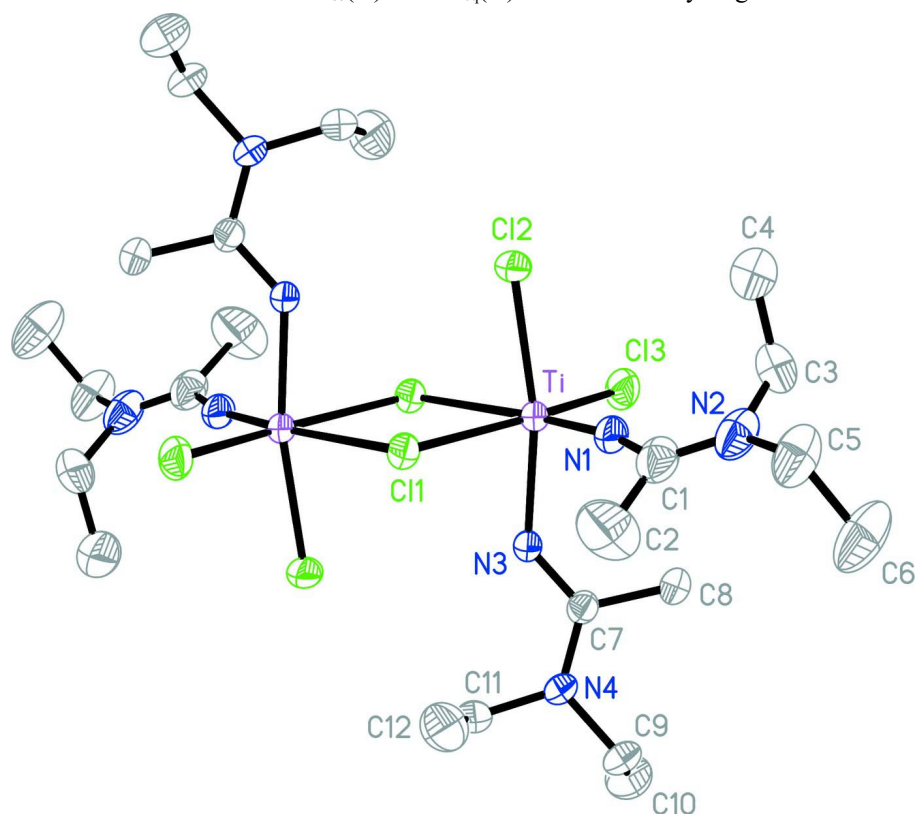


Figure 1

Thermal ellipsoid plot of centrosymmetric title compound shown at the 30% probability level. Solvent molecules and hydrogen atoms omitted for clarity. Only unique atoms are labeled.

Di- μ -chlorido-bis[dichlorido(*N,N*-diethylacetamidinato)(*N,N*-diethylacetamidine)titanium(IV)] acetonitrile disolvate

Crystal data

$[\text{Ti}_2\text{Cl}_6(\text{C}_6\text{H}_{13}\text{N}_2)_2(\text{C}_6\text{H}_{14}\text{N}_2)_2] \cdot 2\text{C}_2\text{H}_3\text{N}$
 $M_r = 845.36$
 Triclinic, $P\bar{1}$

Hall symbol: -P 1
 $a = 9.6217(6) \text{ \AA}$
 $b = 11.1812(7) \text{ \AA}$

$c = 11.2298 (8) \text{ \AA}$
 $\alpha = 95.680 (1)^\circ$
 $\beta = 105.192 (1)^\circ$
 $\gamma = 106.938 (1)^\circ$
 $V = 1095.03 (12) \text{ \AA}^3$
 $Z = 1$
 $F(000) = 444$
 $D_x = 1.282 \text{ Mg m}^{-3}$

Mo $K\alpha$ radiation, $\lambda = 0.71073 \text{ \AA}$
 Cell parameters from 5597 reflections
 $\theta = 4.7\text{--}55.0^\circ$
 $\mu = 0.76 \text{ mm}^{-1}$
 $T = 298 \text{ K}$
 Block, orange
 $0.30 \times 0.15 \times 0.15 \text{ mm}$

Data collection

Bruker SMART APEX
 diffractometer
 Radiation source: fine-focus sealed tube
 Graphite monochromator
 ω scan
 Absorption correction: multi-scan
 (SADABS; Sheldrick, 2003a)
 $T_{\min} = 0.870$, $T_{\max} = 0.890$

8928 measured reflections
 3871 independent reflections
 2999 reflections with $I > 2\sigma(I)$
 $R_{\text{int}} = 0.045$
 $\theta_{\max} = 25.0^\circ$, $\theta_{\min} = 1.9^\circ$
 $h = -11 \rightarrow 11$
 $k = -13 \rightarrow 13$
 $l = -13 \rightarrow 13$

Refinement

Refinement on F^2
 Least-squares matrix: full
 $R[F^2 > 2\sigma(F^2)] = 0.045$
 $wR(F^2) = 0.134$
 $S = 1.02$
 3871 reflections
 215 parameters
 0 restraints
 Primary atom site location: structure-invariant
 direct methods

Secondary atom site location: difference Fourier
 map
 Hydrogen site location: inferred from
 neighbouring sites
 H-atom parameters constrained
 $w = 1/[\sigma^2(F_o^2) + (0.0851P)^2]$
 where $P = (F_o^2 + 2F_c^2)/3$
 $(\Delta/\sigma)_{\max} < 0.001$
 $\Delta\rho_{\max} = 0.82 \text{ e \AA}^{-3}$
 $\Delta\rho_{\min} = -0.28 \text{ e \AA}^{-3}$

Special details

Geometry. All e.s.d.'s (except the e.s.d. in the dihedral angle between two l.s. planes) are estimated using the full covariance matrix. The cell e.s.d.'s are taken into account individually in the estimation of e.s.d.'s in distances, angles and torsion angles; correlations between e.s.d.'s in cell parameters are only used when they are defined by crystal symmetry. An approximate (isotropic) treatment of cell e.s.d.'s is used for estimating e.s.d.'s involving l.s. planes.

Refinement. Refinement of F^2 against ALL reflections. The weighted R -factor wR and goodness of fit S are based on F^2 , conventional R -factors R are based on F , with F set to zero for negative F^2 . The threshold expression of $F^2 > \sigma(F^2)$ is used only for calculating R -factors(gt) etc. and is not relevant to the choice of reflections for refinement. R -factors based on F^2 are statistically about twice as large as those based on F , and R -factors based on ALL data will be even larger.

Fractional atomic coordinates and isotropic or equivalent isotropic displacement parameters (\AA^2)

	x	y	z	$U_{\text{iso}}^*/U_{\text{eq}}$
Ti	0.68333 (5)	0.53749 (4)	0.65286 (4)	0.04665 (18)
Cl1	0.62466 (7)	0.54169 (6)	0.42723 (6)	0.0509 (2)
Cl2	0.65097 (9)	0.31620 (6)	0.60603 (8)	0.0697 (3)
Cl3	0.66161 (11)	0.52732 (8)	0.85562 (7)	0.0787 (3)
N1	0.8818 (3)	0.5903 (2)	0.6847 (2)	0.0596 (6)
C1	1.0294 (5)	0.6394 (3)	0.6804 (3)	0.0803 (10)
C2	1.0542 (5)	0.7145 (5)	0.5730 (5)	0.135 (2)
H2A	1.1219	0.6877	0.5358	0.203*
H2B	1.0979	0.8041	0.6073	0.203*

H2C	0.9579	0.6978	0.5101	0.203*
N2	1.1381 (3)	0.6309 (3)	0.7609 (3)	0.0836 (9)
C3	1.1039 (5)	0.5546 (4)	0.8621 (4)	0.0909 (12)
H3A	1.1916	0.5854	0.9371	0.109*
H3B	1.0184	0.5697	0.8837	0.109*
C4	1.0682 (6)	0.4183 (5)	0.8236 (5)	0.136 (2)
H4A	1.0827	0.3799	0.8967	0.204*
H4B	1.1345	0.4034	0.7774	0.204*
H4C	0.9641	0.3815	0.7714	0.204*
C5	1.2977 (4)	0.6763 (4)	0.7612 (4)	0.0981 (14)
H5A	1.3002	0.6815	0.6760	0.118*
H5B	1.3466	0.6153	0.7897	0.118*
C6	1.3848 (5)	0.8030 (5)	0.8434 (5)	0.132 (2)
H6A	1.4855	0.8319	0.8353	0.198*
H6B	1.3917	0.7964	0.9292	0.198*
H6C	1.3334	0.8626	0.8189	0.198*
N3	0.6676 (3)	0.72414 (19)	0.66808 (19)	0.0484 (5)
H3C	0.5873	0.7282	0.6148	0.058*
C7	0.7531 (3)	0.8339 (2)	0.7406 (2)	0.0480 (6)
C8	0.8672 (3)	0.8363 (3)	0.8616 (3)	0.0621 (8)
H8A	0.8564	0.7507	0.8738	0.093*
H8B	0.8499	0.8823	0.9300	0.093*
H8C	0.9684	0.8776	0.8584	0.093*
N4	0.7431 (3)	0.9462 (2)	0.7128 (2)	0.0579 (6)
C9	0.8370 (4)	1.0706 (3)	0.7955 (3)	0.0731 (9)
H9A	0.8673	1.1323	0.7443	0.088*
H9B	0.9289	1.0624	0.8501	0.088*
C10	0.7545 (5)	1.1182 (4)	0.8737 (4)	0.1025 (14)
H10A	0.8175	1.2011	0.9222	0.154*
H10B	0.7312	1.0608	0.9293	0.154*
H10C	0.6615	1.1237	0.8203	0.154*
C11	0.6473 (4)	0.9544 (3)	0.5929 (3)	0.0742 (10)
H11A	0.6273	1.0346	0.6006	0.089*
H11B	0.5503	0.8862	0.5705	0.089*
C12	0.7191 (6)	0.9456 (5)	0.4896 (4)	0.1124 (16)
H12A	0.6590	0.9637	0.4153	0.169*
H12B	0.7236	0.8612	0.4721	0.169*
H12C	0.8204	1.0061	0.5157	0.169*
N5	0.7942 (7)	0.9547 (5)	0.1738 (6)	0.175 (2)
C13	0.7192 (6)	0.8570 (5)	0.1685 (5)	0.1060 (14)
C14	0.6195 (7)	0.7345 (5)	0.1617 (6)	0.1335 (18)
H14A	0.5241	0.7402	0.1683	0.200*
H14B	0.6639	0.6977	0.2293	0.200*
H14C	0.6025	0.6819	0.0828	0.200*

Atomic displacement parameters (\AA^2)

	U^{11}	U^{22}	U^{33}	U^{12}	U^{13}	U^{23}
Ti	0.0470 (3)	0.0384 (3)	0.0445 (3)	0.0127 (2)	-0.0004 (2)	0.0059 (2)
Cl1	0.0511 (4)	0.0509 (4)	0.0447 (4)	0.0153 (3)	0.0081 (3)	0.0041 (3)
Cl2	0.0661 (5)	0.0421 (4)	0.0841 (6)	0.0206 (4)	-0.0059 (4)	0.0067 (4)
Cl3	0.0915 (6)	0.0739 (5)	0.0456 (4)	0.0040 (5)	0.0037 (4)	0.0171 (4)
N1	0.0457 (14)	0.0528 (14)	0.0677 (15)	0.0153 (11)	0.0003 (11)	0.0041 (11)
C1	0.076 (2)	0.073 (2)	0.081 (2)	0.032 (2)	0.008 (2)	-0.0126 (18)
C2	0.079 (3)	0.152 (5)	0.187 (5)	0.022 (3)	0.055 (3)	0.099 (4)
N2	0.0541 (17)	0.082 (2)	0.097 (2)	0.0180 (15)	0.0127 (16)	-0.0198 (17)
C3	0.083 (3)	0.103 (3)	0.084 (3)	0.041 (2)	0.006 (2)	0.027 (2)
C4	0.126 (4)	0.097 (4)	0.134 (4)	0.023 (3)	-0.022 (3)	0.010 (3)
C5	0.051 (2)	0.118 (3)	0.113 (3)	0.027 (2)	0.022 (2)	-0.027 (3)
C6	0.058 (2)	0.137 (4)	0.159 (5)	-0.001 (3)	0.030 (3)	-0.046 (4)
N3	0.0502 (13)	0.0409 (12)	0.0443 (12)	0.0163 (10)	-0.0014 (9)	0.0029 (9)
C7	0.0476 (15)	0.0463 (15)	0.0444 (14)	0.0132 (12)	0.0093 (12)	0.0026 (11)
C8	0.0627 (19)	0.0536 (17)	0.0512 (17)	0.0114 (15)	-0.0018 (13)	0.0011 (13)
N4	0.0654 (16)	0.0363 (12)	0.0557 (14)	0.0118 (11)	0.0013 (11)	-0.0024 (10)
C9	0.083 (2)	0.0399 (16)	0.072 (2)	0.0089 (16)	0.0028 (17)	-0.0060 (14)
C10	0.134 (4)	0.077 (3)	0.090 (3)	0.044 (3)	0.022 (3)	-0.013 (2)
C11	0.093 (2)	0.0432 (16)	0.070 (2)	0.0233 (16)	-0.0030 (18)	0.0061 (14)
C12	0.150 (4)	0.106 (3)	0.071 (3)	0.026 (3)	0.029 (3)	0.032 (2)
N5	0.170 (5)	0.122 (4)	0.249 (6)	0.012 (3)	0.132 (5)	0.038 (4)
C13	0.102 (3)	0.101 (3)	0.132 (4)	0.028 (3)	0.069 (3)	0.031 (3)
C14	0.144 (5)	0.101 (4)	0.162 (5)	0.029 (3)	0.065 (4)	0.041 (3)

Geometric parameters (\AA , $^\circ$)

Ti—N1	1.751 (2)	N3—C7	1.307 (3)
Ti—N3	2.130 (2)	N3—H3C	0.8600
Ti—Cl3	2.3511 (9)	C7—N4	1.348 (3)
Ti—Cl2	2.3882 (8)	C7—C8	1.498 (4)
Ti—Cl1	2.4557 (8)	C8—H8A	0.9600
Ti—Cl1 ⁱ	2.7002 (8)	C8—H8B	0.9600
Cl1—Ti ⁱ	2.7002 (8)	C8—H8C	0.9600
N1—C1	1.381 (4)	N4—C11	1.447 (4)
C1—N2	1.225 (4)	N4—C9	1.478 (3)
C1—C2	1.566 (6)	C9—C10	1.484 (5)
C2—H2A	0.9600	C9—H9A	0.9700
C2—H2B	0.9600	C9—H9B	0.9700
C2—H2C	0.9600	C10—H10A	0.9600
N2—C5	1.469 (4)	C10—H10B	0.9600
N2—C3	1.534 (5)	C10—H10C	0.9600
C3—C4	1.454 (6)	C11—C12	1.506 (5)
C3—H3A	0.9700	C11—H11A	0.9700
C3—H3B	0.9700	C11—H11B	0.9700
C4—H4A	0.9600	C12—H12A	0.9600

C4—H4B	0.9600	C12—H12B	0.9600
C4—H4C	0.9600	C12—H12C	0.9600
C5—C6	1.485 (6)	N5—C13	1.106 (6)
C5—H5A	0.9700	C13—C14	1.406 (7)
C5—H5B	0.9700	C14—H14A	0.9600
C6—H6A	0.9600	C14—H14B	0.9600
C6—H6B	0.9600	C14—H14C	0.9600
C6—H6C	0.9600		
N1—Ti—N3	94.42 (10)	C5—C6—H6C	109.5
N1—Ti—C13	101.24 (9)	H6A—C6—H6C	109.5
N3—Ti—C13	90.72 (6)	H6B—C6—H6C	109.5
N1—Ti—C12	95.51 (8)	C7—N3—Ti	134.05 (18)
N3—Ti—C12	168.45 (6)	C7—N3—H3C	113.0
C13—Ti—C12	93.10 (3)	Ti—N3—H3C	113.0
N1—Ti—C11	95.57 (9)	N3—C7—N4	123.2 (2)
N3—Ti—C11	84.04 (6)	N3—C7—C8	119.0 (2)
C13—Ti—C11	162.74 (4)	N4—C7—C8	117.8 (2)
C12—Ti—C11	89.15 (3)	C7—C8—H8A	109.5
N1—Ti—C11 ⁱ	172.61 (9)	C7—C8—H8B	109.5
N3—Ti—C11 ⁱ	84.93 (6)	H8A—C8—H8B	109.5
C13—Ti—C11 ⁱ	86.13 (3)	C7—C8—H8C	109.5
C12—Ti—C11 ⁱ	84.46 (3)	H8A—C8—H8C	109.5
C11—Ti—C11 ⁱ	77.04 (3)	H8B—C8—H8C	109.5
Ti—C11—Ti ⁱ	102.96 (3)	C7—N4—C11	121.7 (2)
C1—N1—Ti	165.7 (2)	C7—N4—C9	123.6 (2)
N2—C1—N1	121.7 (4)	C11—N4—C9	114.5 (2)
N2—C1—C2	120.8 (4)	N4—C9—C10	112.4 (3)
N1—C1—C2	117.4 (3)	N4—C9—H9A	109.1
C1—C2—H2A	109.5	C10—C9—H9A	109.1
C1—C2—H2B	109.5	N4—C9—H9B	109.1
H2A—C2—H2B	109.5	C10—C9—H9B	109.1
C1—C2—H2C	109.5	H9A—C9—H9B	107.9
H2A—C2—H2C	109.5	C9—C10—H10A	109.5
H2B—C2—H2C	109.5	C9—C10—H10B	109.5
C1—N2—C5	125.3 (4)	H10A—C10—H10B	109.5
C1—N2—C3	117.5 (3)	C9—C10—H10C	109.5
C5—N2—C3	116.9 (3)	H10A—C10—H10C	109.5
C4—C3—N2	113.5 (4)	H10B—C10—H10C	109.5
C4—C3—H3A	108.9	N4—C11—C12	112.4 (3)
N2—C3—H3A	108.9	N4—C11—H11A	109.1
C4—C3—H3B	108.9	C12—C11—H11A	109.1
N2—C3—H3B	108.9	N4—C11—H11B	109.1
H3A—C3—H3B	107.7	C12—C11—H11B	109.1
C3—C4—H4A	109.5	H11A—C11—H11B	107.9
C3—C4—H4B	109.5	C11—C12—H12A	109.5
H4A—C4—H4B	109.5	C11—C12—H12B	109.5
C3—C4—H4C	109.5	H12A—C12—H12B	109.5

H4A—C4—H4C	109.5	C11—C12—H12C	109.5
H4B—C4—H4C	109.5	H12A—C12—H12C	109.5
N2—C5—C6	112.4 (3)	H12B—C12—H12C	109.5
N2—C5—H5A	109.1	N5—C13—C14	178.0 (6)
C6—C5—H5A	109.1	C13—C14—H14A	109.5
N2—C5—H5B	109.1	C13—C14—H14B	109.5
C6—C5—H5B	109.1	H14A—C14—H14B	109.5
H5A—C5—H5B	107.9	C13—C14—H14C	109.5
C5—C6—H6A	109.5	H14A—C14—H14C	109.5
C5—C6—H6B	109.5	H14B—C14—H14C	109.5
H6A—C6—H6B	109.5		

Symmetry code: (i) $-x+1, -y+1, -z+1$.