

Acta Crystallographica Section E

Structure Reports

Online

ISSN 1600-5368

Hexakis(dimethyl sulfoxide- κ O)-chromium(III) trichlorideYuliya M. Mikhaylichenko,^a Matti Haukka,^b Vadim O. Pavlenko,^a Igor O. Fritsky^a and Turganbay S. Iskenderov^{c*}^aNational Taras Shevchenko University, Department of Chemistry, Volodymyrska Street 64, 01601 Kiev, Ukraine, ^bDepartment of Chemistry, University of Joensuu, PO Box 111, 80101 Joensuu, Finland, and ^cDepartment of Chemistry, Karakalpakian University, Universitet Keshesi 1, 742012 Nukus, Uzbekistan

Correspondence e-mail: turgiskend@freemail.ru

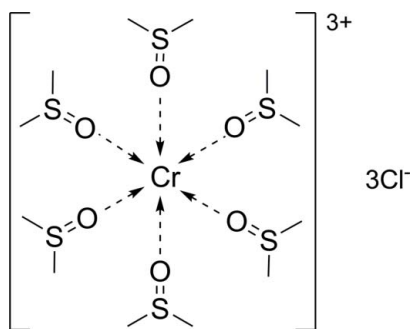
Received 30 April 2008; accepted 2 June 2008

Key indicators: single-crystal X-ray study; $T = 120$ K; mean $\sigma(\text{S}-\text{C}) = 0.004$ Å; R factor = 0.042; wR factor = 0.135; data-to-parameter ratio = 22.7.

In the title compound, $[\text{Cr}(\text{C}_2\text{H}_6\text{OS})_6]\text{Cl}_3$, each Cr^{III} ion is located on a three-fold inversion axis and is coordinated by six dimethylsulfoxide ligands [$\text{Cr}-\text{O} = 1.970(2)$ – $1.972(2)$ Å; $\text{O}-\text{Cr}-\text{O} = 88.19(9)$ and $91.81(9)^\circ$] in a slightly distorted octahedral geometry. The Cl^- anions take part in the formation of weak $\text{C}-\text{H}\cdots\text{Cl}$ hydrogen bonds, which contribute to the crystal packing stabilization.

Related literature

For related literature, see: Chan *et al.* (2004); Desiraju & Steiner (1999); Öhrström & Svensson (2000); Persson *et al.* (1995, and references therein); Reynolds (1970).



Experimental

Crystal data

 $\text{Cr}(\text{C}_2\text{H}_6\text{OS})_6\text{Cl}_3$ $M_r = 627.12$

Trigonal, $R\bar{3}$
 $a = 10.5499(6)$ Å
 $c = 21.1370(13)$ Å
 $V = 2037.4(2)$ Å³
 $Z = 3$

Mo $K\alpha$ radiation
 $\mu = 1.20$ mm⁻¹
 $T = 120(2)$ K
 $0.34 \times 0.29 \times 0.20$ mm

Data collection

Nonius KappaCCD diffractometer
 Absorption correction: multi-scan
 (North *et al.*, 1968)
 $T_{\text{min}} = 0.688$, $T_{\text{max}} = 0.795$

10865 measured reflections
 1044 independent reflections
 855 reflections with $I > 2\sigma(I)$
 $R_{\text{int}} = 0.051$

Refinement

$R[F^2 > 2\sigma(F^2)] = 0.042$
 $wR(F^2) = 0.135$
 $S = 1.14$
 1044 reflections

46 parameters
 H-atom parameters constrained
 $\Delta\rho_{\text{max}} = 0.82$ e Å⁻³
 $\Delta\rho_{\text{min}} = -0.48$ e Å⁻³

Table 1

Hydrogen-bond geometry (Å, °).

$D-H\cdots A$	$D-H$	$H\cdots A$	$D\cdots A$	$D-H\cdots A$
$\text{C1}-\text{H1B}\cdots\text{Cl1}$	0.98	2.75	3.647 (3)	153
$\text{C1}-\text{H1A}\cdots\text{Cl2}^i$	0.98	2.64	3.614 (4)	176

Symmetry code: (i) $x + \frac{1}{3}, y + \frac{2}{3}, z - \frac{1}{3}$.

Data collection: *APEX2* (Bruker, 2004); cell refinement: *DENZO/SCALEPACK* (Otwinowski & Minor, 1997); data reduction: *DENZO/SCALEPACK*; program(s) used to solve structure: *SIR2004* (Burla *et al.*, 2005); program(s) used to refine structure: *SHELXL97* (Sheldrick, 2008); molecular graphics: *ORTEP-3 for Windows* (Farrugia, 1997); software used to prepare material for publication: *SHELXL97*.

Supplementary data and figures for this paper are available from the IUCr electronic archives (Reference: CV2410).

References

- Bruker (2004). *APEX2*. Bruker AXS Inc., Madison, Wisconsin, USA.
- Burla, M. C., Caliandro, R., Camalli, M., Carrozzini, B., Cascarano, G. L., De Caro, L., Giacovazzo, C., Polidori, G. & Spagna, R. (2005). *J. Appl. Cryst.* **38**, 381–388.
- Chan, E. J., Cox, G., Harrowfield, M., Ogden, I., Skelton, B. W. & White, A. H. (2004). *Inorg. Chim. Acta*, **357**, 2365–2372.
- Desiraju, G. R. & Steiner, T. (1999). *The Weak Hydrogen Bond*, pp. 40–107. Oxford University Press.
- Farrugia, L. J. (1997). *J. Appl. Cryst.* **30**, 565.
- North, A. C. T., Phillips, D. C. & Mathews, F. S. (1968). *Acta Cryst.* **A24**, 351–359.
- Öhrström, L. & Svensson, G. (2000). *Inorg. Chim. Acta*, **305**, 157–163.
- Otwinowski, Z. & Minor, W. (1997). *Methods in Enzymology*, Vol. 276, *Macromolecular Crystallography, Part A*, edited by C. W. Carter Jr & R. M. Sweet, pp. 307–326. New York: Academic Press.
- Persson, I., Sandström, M., Yokoyama, H. & Chaudhry, M. (1995). *Z. Naturforsch. Teil A*, **50**, 21–30.
- Reynolds, W. L. (1970). *Prog. Inorg. Chem.* **12**, 1–29.
- Sheldrick, G. M. (2008). *Acta Cryst.* **A64**, 112–122.

supporting information

Acta Cryst. (2008). E64, m904 [doi:10.1107/S1600536808016784]

Hexakis(dimethyl sulfoxide- κ O)chromium(III) trichloride

Yuliya M. Mikhaylichenko, Matti Haukka, Vadim O. Pavlenko, Igor O. Fritsky and Turganbay S. Iskenderov

S1. Comment

Dimethylsulfoxide (dmsO) has often been used as solvent and a ligand in inorganic chemistry since the beginning of the 1960th. Dimethylsulfoxide is a monodentate O-,S-donor ligand (Reynolds, 1970). Solvates of some transition metal ions have been prepared and structurally characterized (Persson *et al.*, 1995 and references therein).

The title compound, (I), is composed of $[\text{Cr}(\text{C}_2\text{H}_6\text{OS})_6]^{3+}$ cations and chloride anions. The Cr(III) ion is located on a 3-fold inversion axis being coordinated by the six dimethylsulfoxide ligands in a slightly distorted octahedral geometry (Fig. 1), with Cr—O 1.970 (2)–1.972 (2) Å interatomic distances and O—Cr—O 88.19 (9), 91.81 (9)° bond angles. A search in the Cambridge Structural Database revealed 14 reports of compounds containing transition metal hexakis(dimethylsulfoxide) cations, of which two described the structure of the $[\text{Cr}(\text{C}_2\text{H}_6\text{OS})_6]^{3+}$ cation in $[\text{Cr}(\text{C}_2\text{H}_6\text{OS})_6](\text{ClO}_4)_3$ (Chan *et al.*, 2004) and $[\text{Cr}(\text{C}_2\text{H}_6\text{OS})_6](\text{NO}_3)_3$ (Ohrstrom & Svensson, 2000). The S=O bond lengths in the aforementioned compounds are almost identical, 1.542 (3) Å *versus* 1.543 (2) Å for the title compound, as well as the O—Cr—O angles, 87.9/92.2° *versus* 88.19–91.81°. In the present structure the average value of Cr—O—S angles (121.9°) is somewhat smaller than that in $[\text{Cr}(\text{C}_2\text{H}_6\text{OS})_6](\text{NO}_3)_3$ (123.6°). All other angles and bonds of the title compound are very similar to the above mentioned structures.

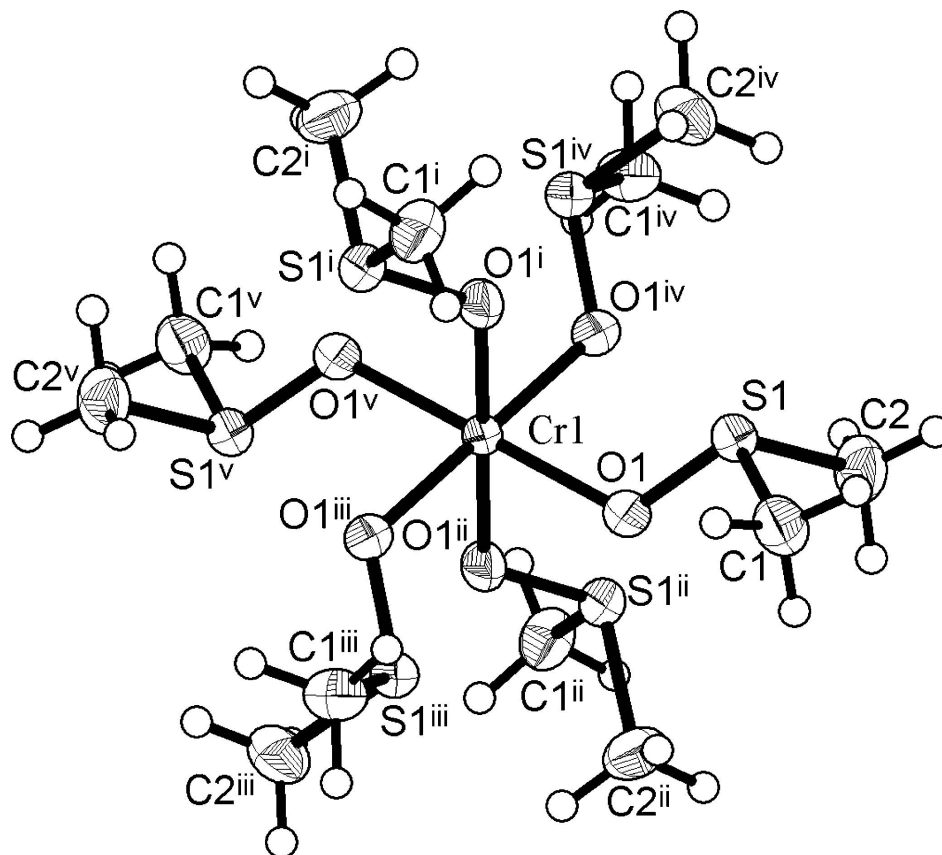
In (I), the Cl anions take part in formation of weak C—H...Cl hydrogen bonds (Table 1), which contribute to the crystal packing stabilization.

S2. Experimental

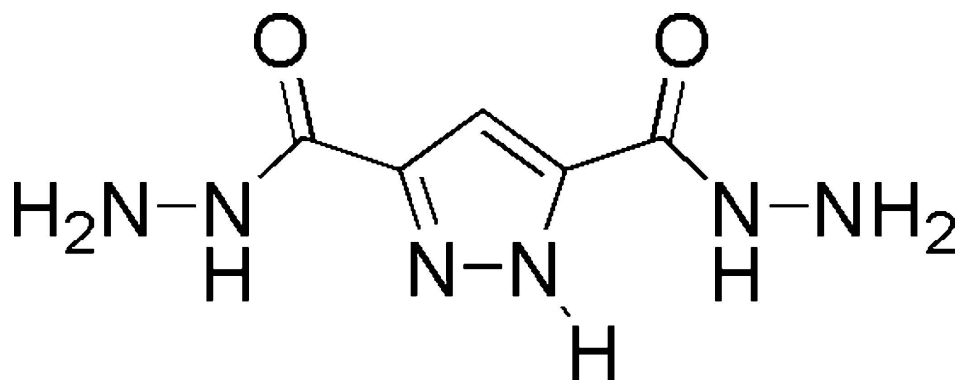
Complex (I) was synthesized during the attempt to prepare chromium (III) complex with 1*H*-pyrazole-3,5-dicarbohydrazide (Fig. 2) by adding $\text{CrCl}_3 \cdot 6\text{H}_2\text{O}$ (0.3 mmol, 3 ml of 0.1*M* aqueous solution) to the 1*H*-pyrazole-3,5-dicarbohydrazide (0.0552 g, 0.3 mmol) in dimethylsulfoxide solution (6 ml). The mixture was stirred for 30 min at ambient temperature. The resulting green solution was filtered and the filtrate was left to stand at room temperature. Slow evaporation of the solvent during 2 weeks yielded green crystals of (I).

S3. Refinement

The H atoms were positioned geometrically (C—H 0.98 Å) and allowed to ride on their parent atoms, with $U_{\text{iso}}(\text{H}) = 1.5U_{\text{eq}}(\text{C})$.

**Figure 1**

The molecular structure of (I), showing the atom-numbering scheme and displacement ellipsoids at the 60% probability level [symmetry codes: (i) $-x + y, 1 - x, z$; (ii) $2/3 + x - y, 1/3 + x, 1/3 - z$; (iii) $1 - y, 1 + x - y, z$; (iv) $-1/3 + y, 1/3 - x + y, 1/3 - z$; (v) $2/3 - x, 4/3 - y, 1/3 - z$.]

**Figure 2**

1*H*-pyrazole-3,5-dicarbohydrazide

Hexakis(dimethyl sulfoxide- κ O)chromium(III) trichloride

Crystal data

[Cr(C₂H₆OS)₆]Cl₃ $M_r = 627.12$ Trigonal, $R\bar{3}$

Hall symbol: -R 3

 $a = 10.5499$ (6) Å $c = 21.1370$ (13) Å $V = 2037.4$ (2) Å³ $Z = 3$ $F(000) = 981$ $D_x = 1.533$ Mg m⁻³Mo $K\alpha$ radiation, $\lambda = 0.71073$ Å

Cell parameters from 6073 reflections

 $\theta = 1.0$ – 27.5° $\mu = 1.20$ mm⁻¹ $T = 120$ K

Block, green

 $0.34 \times 0.29 \times 0.20$ mm

Data collection

Nonius KappaCCD

diffractometer

Radiation source: fine-focus sealed tube

Horizontally mounted graphite crystal

monochromator

Detector resolution: 9 pixels mm⁻¹ φ scans and ω scans with κ offset

Absorption correction: multi-scan

(North *et al.*, 1968) $T_{\min} = 0.688$, $T_{\max} = 0.795$

10865 measured reflections

1044 independent reflections

855 reflections with $I > 2\sigma(I)$ $R_{\text{int}} = 0.051$ $\theta_{\max} = 27.6^\circ$, $\theta_{\min} = 2.4^\circ$ $h = -13$ → 13 $k = -13$ → 13 $l = -26$ → 27

Refinement

Refinement on F^2

Least-squares matrix: full

 $R[F^2 > 2\sigma(F^2)] = 0.042$ $wR(F^2) = 0.135$ $S = 1.14$

1044 reflections

46 parameters

0 restraints

Primary atom site location: structure-invariant

direct methods

Secondary atom site location: difference Fourier map

Hydrogen site location: inferred from neighbouring sites

H-atom parameters constrained

 $w = 1/[\sigma^2(F_o^2) + (0.0789P)^2 + 3.3338P]$ where $P = (F_o^2 + 2F_c^2)/3$ $(\Delta/\sigma)_{\max} < 0.001$ $\Delta\rho_{\max} = 0.82$ e Å⁻³ $\Delta\rho_{\min} = -0.48$ e Å⁻³

Special details

Geometry. All e.s.d.'s (except the e.s.d. in the dihedral angle between two l.s. planes) are estimated using the full covariance matrix. The cell e.s.d.'s are taken into account individually in the estimation of e.s.d.'s in distances, angles and torsion angles; correlations between e.s.d.'s in cell parameters are only used when they are defined by crystal symmetry. An approximate (isotropic) treatment of cell e.s.d.'s is used for estimating e.s.d.'s involving l.s. planes.

Refinement. Refinement of F^2 against ALL reflections. The weighted R -factor wR and goodness of fit S are based on F^2 , conventional R -factors R are based on F , with F set to zero for negative F^2 . The threshold expression of $F^2 > \sigma(F^2)$ is used only for calculating R -factors(gt) *etc.* and is not relevant to the choice of reflections for refinement. R -factors based on F^2 are statistically about twice as large as those based on F , and R -factors based on ALL data will be even larger.

Fractional atomic coordinates and isotropic or equivalent isotropic displacement parameters (Å²)

	x	y	z	$U_{\text{iso}}^*/U_{\text{eq}}$
Cr1	0.3333	0.6667	0.1667	0.0214 (3)
Cl1	0.0000	0.0000	0.0000	0.0324 (5)
Cl2	0.0000	0.0000	0.25064 (7)	0.0416 (4)
S1	0.24193 (8)	0.38772 (8)	0.08860 (4)	0.0261 (3)
O1	0.3687 (2)	0.5325 (2)	0.11455 (10)	0.0270 (5)

C1	0.3083 (4)	0.3721 (4)	0.01371 (16)	0.0336 (7)
H1A	0.3141	0.4485	-0.0145	0.050*
H1B	0.2416	0.2757	-0.0044	0.050*
H1C	0.4058	0.3834	0.0186	0.050*
C2	0.2577 (4)	0.2497 (4)	0.12936 (18)	0.0384 (8)
H2A	0.3576	0.2670	0.1248	0.058*
H2B	0.1883	0.1538	0.1116	0.058*
H2C	0.2360	0.2518	0.1743	0.058*

Atomic displacement parameters (Å²)

	U^{11}	U^{22}	U^{33}	U^{12}	U^{13}	U^{23}
Cr1	0.0165 (4)	0.0165 (4)	0.0311 (6)	0.00824 (19)	0.000	0.000
Cl1	0.0245 (6)	0.0245 (6)	0.0480 (11)	0.0123 (3)	0.000	0.000
Cl2	0.0421 (6)	0.0421 (6)	0.0405 (9)	0.0211 (3)	0.000	0.000
S1	0.0221 (4)	0.0207 (4)	0.0346 (5)	0.0099 (3)	-0.0004 (3)	-0.0004 (3)
O1	0.0202 (10)	0.0222 (10)	0.0374 (12)	0.0096 (9)	-0.0015 (8)	-0.0045 (8)
C1	0.0339 (17)	0.0279 (16)	0.0331 (17)	0.0111 (13)	0.0028 (13)	-0.0017 (13)
C2	0.045 (2)	0.0278 (16)	0.044 (2)	0.0196 (15)	-0.0007 (16)	0.0063 (14)

Geometric parameters (Å, °)

Cr1—O1 ⁱ	1.972 (2)	S1—C1	1.772 (3)
Cr1—O1 ⁱⁱ	1.971 (2)	C1—H1A	0.9800
Cr1—O1 ⁱⁱⁱ	1.971 (2)	C1—H1B	0.9800
Cr1—O1	1.970 (2)	C1—H1C	0.9800
Cr1—O1 ^{iv}	1.971 (2)	C2—H2A	0.9800
Cr1—O1 ^v	1.971 (2)	C2—H2B	0.9800
S1—O1	1.542 (2)	C2—H2C	0.9800
S1—C2	1.770 (3)		
O1 ⁱ —Cr1—O1 ⁱⁱ	180.0	O1—S1—C1	102.86 (14)
O1 ⁱ —Cr1—O1 ⁱⁱⁱ	91.81 (9)	C2—S1—C1	98.87 (17)
O1 ⁱⁱ —Cr1—O1 ⁱⁱⁱ	88.19 (9)	S1—O1—Cr1	121.86 (12)
O1 ⁱ —Cr1—O1	91.81 (9)	S1—C1—H1A	109.5
O1 ⁱⁱ —Cr1—O1	88.19 (9)	S1—C1—H1B	109.5
O1 ⁱⁱⁱ —Cr1—O1	91.81 (9)	H1A—C1—H1B	109.5
O1 ⁱ —Cr1—O1 ^{iv}	88.19 (9)	S1—C1—H1C	109.5
O1 ⁱⁱ —Cr1—O1 ^{iv}	91.81 (9)	H1A—C1—H1C	109.5
O1 ⁱⁱⁱ —Cr1—O1 ^{iv}	180.0	H1B—C1—H1C	109.5
O1—Cr1—O1 ^{iv}	88.19 (9)	S1—C2—H2A	109.5
O1 ⁱ —Cr1—O1 ^v	88.19 (9)	S1—C2—H2B	109.5
O1 ⁱⁱ —Cr1—O1 ^v	91.81 (9)	H2A—C2—H2B	109.5
O1 ⁱⁱⁱ —Cr1—O1 ^v	88.19 (9)	S1—C2—H2C	109.5
O1—Cr1—O1 ^v	179.999 (1)	H2A—C2—H2C	109.5
O1 ^{iv} —Cr1—O1 ^v	91.81 (9)	H2B—C2—H2C	109.5
O1—S1—C2	104.46 (15)		

C2—S1—O1—Cr1	-112.64 (17)	O1 ⁱⁱ —Cr1—O1—S1	140.87 (18)
C1—S1—O1—Cr1	144.52 (16)	O1 ⁱⁱⁱ —Cr1—O1—S1	-131.00 (10)
O1 ⁱ —Cr1—O1—S1	-39.13 (18)	O1 ^{iv} —Cr1—O1—S1	49.00 (10)

Symmetry codes: (i) $-x+y, -x+1, z$; (ii) $x-y+2/3, x+1/3, -z+1/3$; (iii) $-y+1, x-y+1, z$; (iv) $y-1/3, -x+y+1/3, -z+1/3$; (v) $-x+2/3, -y+4/3, -z+1/3$.

Hydrogen-bond geometry (Å, °)

<i>D</i> —H \cdots <i>A</i>	<i>D</i> —H	H \cdots <i>A</i>	<i>D</i> \cdots <i>A</i>	<i>D</i> —H \cdots <i>A</i>
C1—H1B \cdots Cl1	0.98	2.75	3.647 (3)	153
C1—H1A \cdots Cl2 ^{vi}	0.98	2.64	3.614 (4)	176

Symmetry code: (vi) $x+1/3, y+2/3, z-1/3$.