

Acta Crystallographica Section E

Structure Reports

Online

ISSN 1600-5368

4-(4-Propoxybenzoyloxy)benzoic acid

 Khushi Muhammad,^a M. Khawar Rauf,^a Masahiro Ebihara^b and Shahid Hameed^{a*}
^aDepartment of Chemistry, Quaid-i-Azam University, Islamabad 45320, Pakistan, and ^bDepartment of Chemistry, Faculty of Engineering, Gifu University, Yanagido, Gifu 501-1193, Japan

Correspondence e-mail: shameed@qau.edu.pk

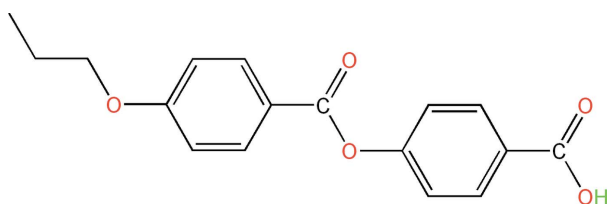
Received 26 May 2008; accepted 4 June 2008

 Key indicators: single-crystal X-ray study; $T = 123$ K; mean $\sigma(\text{C}-\text{C}) = 0.004$ Å; R factor = 0.085; wR factor = 0.147; data-to-parameter ratio = 16.4.

The title compound, $\text{C}_{17}\text{H}_{16}\text{O}_5$, is an important intermediate for the synthesis of side-chain ligands for polymeric liquid crystals. The propoxy and benzoic acid groups subtend dihedral angles of 4.36 (6) and 55.35 (6) $^\circ$, respectively, with the central benzoyloxy unit. The crystal structure is stabilized by an intermolecular $\text{O}-\text{H}\cdots\text{O}$ hydrogen bond.

Related literature

For related literature, see: Ahmad *et al.* (2003); Aranzazu *et al.* (2006); Cady *et al.* (2002); Hameed & Rama (2004); Hartung *et al.* (1997); Hussain *et al.* (2003, 2005); Kong & Tang (1998); Nazir *et al.* (2008a,b); Ribeiro *et al.* (2008); Shafiq *et al.* (2003, 2005); Wu & Hsu (2007); Wu & Lin (2007).



Experimental

Crystal data

$\text{C}_{17}\text{H}_{16}\text{O}_5$	$V = 2893$ (3) Å ³
$M_r = 300.30$	$Z = 8$
Monoclinic, $C2/c$	Mo $K\alpha$ radiation
$a = 21.063$ (15) Å	$\mu = 0.10$ mm ⁻¹
$b = 5.703$ (4) Å	$T = 123$ (2) K
$c = 24.437$ (18) Å	$0.30 \times 0.19 \times 0.15$ mm
$\beta = 99.790$ (9) $^\circ$	

Data collection

Rigaku/MSC Mercury CCD diffractometer	11426 measured reflections
Absorption correction: empirical (NUMABS; Higashi, 1999)	3297 independent reflections
$T_{\min} = 0.970$, $T_{\max} = 0.985$	2824 reflections with $I > 2\sigma(I)$
	$R_{\text{int}} = 0.051$

Refinement

$R[F^2 > 2\sigma(F^2)] = 0.084$	201 parameters
$wR(F^2) = 0.146$	H-atom parameters constrained
$S = 1.26$	$\Delta\rho_{\text{max}} = 0.29$ e Å ⁻³
3297 reflections	$\Delta\rho_{\text{min}} = -0.28$ e Å ⁻³

Table 1

 Hydrogen-bond geometry (Å, $^\circ$).

$D-\text{H}\cdots A$	$D-\text{H}$	$\text{H}\cdots A$	$D\cdots A$	$D-\text{H}\cdots A$
$\text{O3}-\text{H3O}\cdots\text{O4}^i$	0.84	1.77	2.606 (3)	172

 Symmetry code: (i) $-x, -y + 1, -z$.

Data collection: *CrystalClear* (Molecular Structure Corporation & Rigaku, 2001); cell refinement: *CrystalClear*; data reduction: *TEXSAN* (Molecular Structure Corporation & Rigaku, 2004); program(s) used to solve structure: *SIR97* (Altomare *et al.*, 1999); program(s) used to refine structure: *SHELXL97* (Sheldrick, 2008); molecular graphics: *ORTEPII* (Johnson, 1976); software used to prepare material for publication: *SHELXL97* and *TEXSAN*.

MKR is grateful to The Higher Education Commission of Pakistan for financial support under the International Support initiative program for Doctoral Fellowships in Gifu University, Japan.

Supplementary data and figures for this paper are available from the IUCr electronic archives (Reference: HG2407).

References

- Ahmad, H. B., Rama, N. H., Hussain, M., Hussain, M. T., Qasim, M. M., Hameed, S., Malana, M. A. & Malik, A. (2003). *Indian J. Chem.* **42B**, 611–615.
- Altomare, A., Burla, M. C., Camalli, M., Cascarano, G. L., Giacovazzo, C., Guagliardi, A., Moliterni, A. G. G., Polidori, G. & Spagna, R. (1999). *J. Appl. Cryst.* **32**, 115–119.
- Aranzazu, M.-G., Ernesto, P. & Antonio, B. (2006). *Polymer*, **47**, 2080–2090.
- Cady, A., Olson, D. A., Han, X. F., Nguyen, H. T. & Huang, C. C. (2002). *Rapid Commun. Phys. Rev. E*, **65**, 030701.
- Hameed, S. & Rama, N. H. (2004). *J. Chem. Soc. Pak.* **26**, 157–162.
- Hartung, H., Hoffmann, F. & Weissflog, W. (1997). *J. Mol. Struct.* **415**, 205–214.
- Higashi, T. (1999). *NUMABS*. Rigaku Corporation, Tokyo, Japan.
- Hussain, M., Hussain, M. T., Rama, N. H., Hameed, S., Malik, A. & Khan, K. M. (2003). *Nat. Prod. Res.* **17**, 207–214.
- Hussain, M. T., Rama, N. H., Hameed, S., Malik, A. & Khan, K. M. (2005). *Nat. Prod. Res.* **19**, 41–51.
- Johnson, C. K. (1976). *ORTEPII*. Report ORNL-5138. Oak Ridge National Laboratory, Tennessee, USA.
- Kong, X. X. & Tang, B. Z. (1998). *Chem. Mater.* **10**, 3352–3363.
- Molecular Structure Corporation & Rigaku (2001). *Crystal Clear*. MSC, The Woodlands, Texas, USA, and Rigaku Corporation, Tokyo, Japan.
- Molecular Structure Corporation & Rigaku (2004). *TEXSAN*. MSC, The Woodlands, Texas, USA, and Rigaku Corporation, Tokyo, Japan.
- Nazir, S., Muhammad, K., Khawar Rauf, M., Ebihara, M. & Hameed, S. (2008a). *Acta Cryst.* **E64**, o1013.
- Nazir, S., Khawar Rauf, M., Ebihara, M. & Hameed, S. (2008b). *Acta Cryst.* **E64**, o423.
- Ribeiro, G., Benadiba, M., Colquhoun, A. & Silva, D. D. (2008). *Polyhedron*, **27**, 1131–1137.
- Shafiq, Z., Arfan, M., Rama, N. H., Hameed, S., Abbas, G. & Hussain, M. T. (2005). *Turk. J. Chem.* **29**, 321–325.
- Shafiq, Z., Arfan, M., Rama, N. H., Hussain, M. & Hameed, S. (2003). *Indian J. Chem.* **42B**, 1523–1526.
- Sheldrick, G. M. (2008). *Acta Cryst.* **A64**, 112–122.
- Wu, S.-L. & Hsu, H.-N. (2007). *Liq. Cryst.* **34**, 1159–1165.
- Wu, S.-L. & Lin, C.-Y. (2007). *Liq. Cryst.* **34**, 25–31.

supporting information

Acta Cryst. (2008). E64, o1251 [doi:10.1107/S1600536808016942]

4-(4-Propoxybenzoyloxy)benzoic acid

Khushi Muhammad, M. Khawar Rauf, Masahiro Ebihara and Shahid Hameed

S1. Comment

Differently substituted aromatic carboxylic acids having benzene rings either joined directly through a covalent bond (Wu & Hsu 2007) or through some functional group, mostly an ester (Cady *et al.*, 2002; Wu & Lin 2007) or an olefin (Nazir *et al.*, 2008a; 2008b), have been investigated for their liquid crystal properties. Such acids have been used in the synthesis of intermediates for side-chain liquid crystal polymers (Kong & Tang 1998) as well as for main-chain liquid crystal polymers (Aranzazu *et al.*, 2006). In addition, the carboxylic acids, in general, have been used as intermediates in the synthesis of a large number of organic compounds (Hussain *et al.*, 2005; 2003; Shafiq *et al.*, 2005; 2003; Ahmad *et al.*, 2003). The pharmaceutical industry has also benefited from this class of compounds (Ribeiro *et al.*, 2008; Hameed & Rama, 2004). The title compound (I) was synthesized in our lab as an intermediate in the synthesis of side-chain liquid crystal polymers, by treating 4-hydroxybenzaldehyde with 4-propyloxybenzoylchloride followed by KMnO_4 oxidation. In this report, the crystal structure of (I) is presented. Bond lengths and angles are within the normal ranges as given for benzoyloxybenzoic acids (Hartung *et al.*, 1997). The C(14)—O(4), C(14)—O(3), C(7)—O(1) and C(7)—O(2) bond lengths are 1.237 (3), 1.300 (3), 1.204 (3) and 1.367 (3) respectively, clearly indicating the partial double bond character of the carboxylate groups. The benzoic acid groups subtend dihedral angles [55.35 (6)°] with the central benzoyloxy moiety C(1)/C(2)/C(3)/C(4)/C(5)/C(6)/C(7)/O(1)/O(2). Two molecules related by an inversion center form a dimer *via* two hydrogen bonds composed of two carboxyl groups as shown in Fig. 2.

S2. Experimental

To a solution of 4-hydroxybenzaldehyde (0.032 moles) in 50 ml of triethylamine (TEA) was added an equivalent amount of 4-propoxybenzoylchloride with stirring and the mixture heated at 333 K for 1 hour. The excess TEA was removed in vacuo and the product, after recrystallization from hot ethanol, was subjected to KMnO_4 oxidation. The 4-(4-propoxybenzoyloxy)benzaldehyde (0.025 moles) was dissolved in acetone (100 ml) and aqueous KMnO_4 (0.025 moles) was added dropwise at room temperature with stirring. The stirring was continued for three hours when the reaction mixture was filtered and the filtrate acidified using 6M HCl. The product was purified by recrystallization from acetone. Yield: 93% (from 4-(4-propoxybenzoyloxy)benzaldehyde); m.p: 478-480.5K; IR (ν_{max} , KBr, cm^{-1}): 3100-2400, 1731, 1685, 1603, 1512, 1425, 1300, 1260, 1206, 1163, 1061, 1009, 758; $^1\text{H-NMR}$ (300 MHz, DMSO-d_6): δ 0.99 (3H, t, $J = 7.2$ Hz), 1.77 (2H, sex, $J = 6.9$ Hz), 4.05 (2H, t, $J = 6.6$ Hz), 7.12 (2H, d, $J = 8.7$ Hz), 7.4 (2H, d, $J = 8.7$ Hz), 8.03 (2H, d, $J = 8.7$ Hz), 8.08 (2H, d, $J = 8.7$ Hz), 13.02 (1H, bs); $^{13}\text{C-NMR}$ (75 MHz, DMSO-d_6): 10.75, 22.33, 69.91, 115.16, 120.85, 122.70, 128.79, 131.35, 132.60, 154.65, 163.82, 164.29, 167.12.

S3. Refinement

The O-bound H atom was refined isotropically. All the other H atoms were placed in idealized positions and treated as riding atoms, with C—H distance in the range 0.95–0.99 Å and $U_{\text{iso}}(\text{H}) = 1.2U_{\text{eq}}(\text{C})$ or $1.5U_{\text{eq}}(\text{C})$.

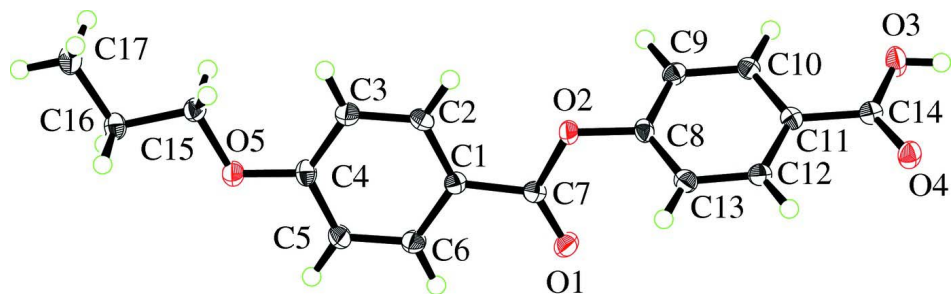


Figure 1

Molecular structure of (I) showing atom-labelling scheme and displacement ellipsoids at the 30% probability level.



Figure 2

Showing hydrogen bonded molecules through N—H...O.

4-(4-Propoxybenzoyloxy)benzoic acid

Crystal data

$C_{17}H_{16}O_5$
 $M_r = 300.30$
 Monoclinic, $C2/c$
 Hall symbol: $-C 2yc$
 $a = 21.063 (15) \text{ \AA}$
 $b = 5.703 (4) \text{ \AA}$
 $c = 24.437 (18) \text{ \AA}$
 $\beta = 99.790 (9)^\circ$
 $V = 2893 (3) \text{ \AA}^3$
 $Z = 8$

$F(000) = 1264$
 $D_x = 1.379 \text{ Mg m}^{-3}$
 Mo $K\alpha$ radiation, $\lambda = 0.71070 \text{ \AA}$
 Cell parameters from 3169 reflections
 $\theta = 3.4\text{--}27.5^\circ$
 $\mu = 0.10 \text{ mm}^{-1}$
 $T = 123 \text{ K}$
 Rod, colorless
 $0.30 \times 0.19 \times 0.15 \text{ mm}$

Data collection

Rigaku/MSC Mercury CCD
 diffractometer
 Radiation source: fine-focus sealed tube
 Graphite monochromator
 ω scans
 Absorption correction: empirical (using
 intensity measurements)
 (NUMABS; Higashi, 1999)
 $T_{\min} = 0.970$, $T_{\max} = 0.985$

11426 measured reflections
 3297 independent reflections
 2824 reflections with $I > 2\sigma(I)$
 $R_{\text{int}} = 0.051$
 $\theta_{\max} = 27.5^\circ$, $\theta_{\min} = 3.4^\circ$
 $h = -23 \rightarrow 27$
 $k = -7 \rightarrow 5$
 $l = -31 \rightarrow 31$

Refinement

Refinement on F^2
 Least-squares matrix: full
 $R[F^2 > 2\sigma(F^2)] = 0.084$
 $wR(F^2) = 0.146$
 $S = 1.26$
 3297 reflections

201 parameters
 0 restraints
 Primary atom site location: structure-invariant
 direct methods
 Secondary atom site location: difference Fourier
 map

Hydrogen site location: inferred from
neighbouring sites
H-atom parameters constrained

$$w = 1/[\sigma^2(F_o^2) + (0.026P)^2 + 6.5341P]$$

where $P = (F_o^2 + 2F_c^2)/3$

$$(\Delta/\sigma)_{\max} < 0.001$$

$$\Delta\rho_{\max} = 0.29 \text{ e } \text{\AA}^{-3}$$

$$\Delta\rho_{\min} = -0.28 \text{ e } \text{\AA}^{-3}$$

Special details

Geometry. All e.s.d.'s (except the e.s.d. in the dihedral angle between two l.s. planes) are estimated using the full covariance matrix. The cell e.s.d.'s are taken into account individually in the estimation of e.s.d.'s in distances, angles and torsion angles; correlations between e.s.d.'s in cell parameters are only used when they are defined by crystal symmetry. An approximate (isotropic) treatment of cell e.s.d.'s is used for estimating e.s.d.'s involving l.s. planes.

Refinement. Refinement of F^2 against ALL reflections. The weighted R -factor wR and goodness of fit S are based on F^2 , conventional R -factors R are based on F , with F set to zero for negative F^2 . The threshold expression of $F^2 > \sigma(F^2)$ is used only for calculating R -factors(gt) *etc.* and is not relevant to the choice of reflections for refinement. R -factors based on F^2 are statistically about twice as large as those based on F , and R -factors based on ALL data will be even larger.

Fractional atomic coordinates and isotropic or equivalent isotropic displacement parameters (\AA^2)

	<i>x</i>	<i>y</i>	<i>z</i>	$U_{\text{iso}}^*/U_{\text{eq}}$
C1	0.12026 (11)	0.2626 (4)	0.39828 (9)	0.0171 (5)
C2	0.15716 (12)	0.4515 (4)	0.42065 (10)	0.0223 (5)
H2	0.1686	0.5699	0.3968	0.027*
C3	0.17771 (13)	0.4698 (4)	0.47766 (10)	0.0229 (5)
H3	0.2030	0.6000	0.4926	0.027*
C4	0.16099 (12)	0.2958 (4)	0.51274 (10)	0.0198 (5)
C5	0.12360 (12)	0.1058 (4)	0.49037 (10)	0.0229 (5)
H5	0.1120	-0.0124	0.5142	0.027*
C6	0.10351 (12)	0.0891 (4)	0.43378 (10)	0.0212 (5)
H6	0.0781	-0.0408	0.4188	0.025*
C7	0.09682 (11)	0.2342 (4)	0.33803 (10)	0.0176 (5)
O1	0.06221 (9)	0.0793 (3)	0.31697 (7)	0.0250 (4)
O2	0.11946 (8)	0.4078 (3)	0.30793 (7)	0.0216 (4)
C8	0.09736 (11)	0.4149 (4)	0.25035 (9)	0.0181 (5)
C9	0.06788 (11)	0.6204 (4)	0.22986 (10)	0.0192 (5)
H9	0.0624	0.7460	0.2542	0.023*
C10	0.04640 (11)	0.6402 (4)	0.17308 (10)	0.0177 (5)
H10	0.0254	0.7794	0.1583	0.021*
C11	0.05562 (11)	0.4570 (4)	0.13782 (10)	0.0169 (5)
C12	0.08634 (11)	0.2523 (4)	0.15939 (10)	0.0188 (5)
H12	0.0928	0.1274	0.1352	0.023*
C13	0.10753 (12)	0.2303 (4)	0.21606 (10)	0.0202 (5)
H13	0.1286	0.0915	0.2310	0.024*
C14	0.03310 (11)	0.4762 (4)	0.07712 (10)	0.0177 (5)
O3	0.00181 (9)	0.6673 (3)	0.06089 (7)	0.0272 (4)
H3O	-0.0102	0.6630	0.0263	0.041*
O4	0.04427 (9)	0.3198 (3)	0.04501 (7)	0.0244 (4)
O5	0.17781 (9)	0.2955 (3)	0.56890 (7)	0.0238 (4)
C15	0.21608 (12)	0.4869 (4)	0.59482 (10)	0.0202 (5)
H15A	0.1923	0.6365	0.5875	0.024*

H15B	0.2568	0.4988	0.5799	0.024*
C16	0.22997 (12)	0.4371 (4)	0.65666 (10)	0.0207 (5)
H16A	0.2560	0.2922	0.6636	0.025*
H16B	0.1889	0.4117	0.6704	0.025*
C17	0.26641 (13)	0.6408 (5)	0.68816 (11)	0.0277 (6)
H17A	0.3098	0.6505	0.6788	0.042*
H17B	0.2696	0.6153	0.7282	0.042*
H17C	0.2433	0.7875	0.6777	0.042*

Atomic displacement parameters (Å²)

	U^{11}	U^{22}	U^{33}	U^{12}	U^{13}	U^{23}
C1	0.0169 (12)	0.0177 (11)	0.0174 (12)	0.0001 (9)	0.0053 (9)	-0.0012 (9)
C2	0.0269 (13)	0.0199 (12)	0.0207 (13)	-0.0054 (10)	0.0062 (10)	0.0038 (10)
C3	0.0262 (13)	0.0212 (12)	0.0214 (13)	-0.0056 (10)	0.0042 (10)	0.0002 (10)
C4	0.0189 (12)	0.0255 (13)	0.0156 (12)	0.0005 (10)	0.0044 (10)	0.0003 (10)
C5	0.0275 (14)	0.0237 (12)	0.0184 (13)	-0.0057 (10)	0.0061 (10)	0.0025 (10)
C6	0.0220 (13)	0.0210 (12)	0.0213 (13)	-0.0045 (10)	0.0051 (10)	-0.0004 (10)
C7	0.0181 (12)	0.0163 (11)	0.0192 (12)	0.0005 (9)	0.0058 (10)	0.0002 (9)
O1	0.0298 (10)	0.0258 (9)	0.0203 (9)	-0.0100 (8)	0.0067 (8)	-0.0043 (7)
O2	0.0274 (10)	0.0236 (9)	0.0134 (8)	-0.0069 (7)	0.0024 (7)	0.0006 (7)
C8	0.0174 (12)	0.0232 (12)	0.0138 (12)	-0.0057 (9)	0.0031 (9)	0.0022 (9)
C9	0.0193 (12)	0.0188 (11)	0.0203 (12)	-0.0009 (9)	0.0063 (10)	-0.0032 (9)
C10	0.0175 (12)	0.0176 (11)	0.0184 (12)	0.0006 (9)	0.0045 (9)	0.0013 (9)
C11	0.0136 (11)	0.0193 (11)	0.0181 (12)	-0.0008 (9)	0.0040 (9)	0.0014 (9)
C12	0.0204 (12)	0.0173 (11)	0.0198 (12)	-0.0009 (9)	0.0072 (10)	-0.0012 (9)
C13	0.0208 (12)	0.0199 (12)	0.0200 (12)	-0.0007 (9)	0.0036 (10)	0.0021 (9)
C14	0.0153 (11)	0.0190 (11)	0.0196 (12)	0.0013 (9)	0.0055 (9)	-0.0009 (9)
O3	0.0382 (11)	0.0267 (10)	0.0155 (9)	0.0145 (8)	0.0012 (8)	0.0001 (7)
O4	0.0296 (10)	0.0244 (9)	0.0193 (9)	0.0073 (8)	0.0043 (7)	-0.0031 (7)
O5	0.0281 (10)	0.0259 (9)	0.0168 (9)	-0.0071 (8)	0.0024 (7)	0.0004 (7)
C15	0.0200 (12)	0.0220 (12)	0.0184 (12)	-0.0036 (10)	0.0029 (10)	-0.0007 (10)
C16	0.0181 (12)	0.0269 (13)	0.0174 (12)	0.0002 (10)	0.0035 (10)	0.0009 (10)
C17	0.0284 (14)	0.0338 (15)	0.0200 (13)	-0.0014 (11)	0.0012 (11)	0.0000 (11)

Geometric parameters (Å, °)

C1—C2	1.385 (3)	C10—H10	0.9500
C1—C6	1.400 (3)	C11—C12	1.394 (3)
C1—C7	1.480 (3)	C11—C14	1.482 (3)
C2—C3	1.391 (4)	C12—C13	1.387 (3)
C2—H2	0.9500	C12—H12	0.9500
C3—C4	1.395 (3)	C13—H13	0.9500
C3—H3	0.9500	C14—O4	1.237 (3)
C4—O5	1.358 (3)	C14—O3	1.300 (3)
C4—C5	1.395 (3)	O3—H3O	0.8400
C5—C6	1.379 (3)	O5—C15	1.438 (3)
C5—H5	0.9500	C15—C16	1.516 (3)

C6—H6	0.9500	C15—H15A	0.9900
C7—O1	1.204 (3)	C15—H15B	0.9900
C7—O2	1.367 (3)	C16—C17	1.527 (4)
O2—C8	1.406 (3)	C16—H16A	0.9900
C8—C9	1.380 (3)	C16—H16B	0.9900
C8—C13	1.385 (3)	C17—H17A	0.9800
C9—C10	1.389 (3)	C17—H17B	0.9800
C9—H9	0.9500	C17—H17C	0.9800
C10—C11	1.389 (3)		
C2—C1—C6	119.3 (2)	C10—C11—C14	120.7 (2)
C2—C1—C7	123.2 (2)	C12—C11—C14	119.3 (2)
C6—C1—C7	117.6 (2)	C13—C12—C11	120.2 (2)
C1—C2—C3	120.8 (2)	C13—C12—H12	119.9
C1—C2—H2	119.6	C11—C12—H12	119.9
C3—C2—H2	119.6	C8—C13—C12	118.6 (2)
C2—C3—C4	119.6 (2)	C8—C13—H13	120.7
C2—C3—H3	120.2	C12—C13—H13	120.7
C4—C3—H3	120.2	O4—C14—O3	123.5 (2)
O5—C4—C3	124.9 (2)	O4—C14—C11	121.2 (2)
O5—C4—C5	115.3 (2)	O3—C14—C11	115.3 (2)
C3—C4—C5	119.7 (2)	C14—O3—H3O	109.5
C6—C5—C4	120.2 (2)	C4—O5—C15	118.32 (19)
C6—C5—H5	119.9	O5—C15—C16	107.18 (19)
C4—C5—H5	119.9	O5—C15—H15A	110.3
C5—C6—C1	120.4 (2)	C16—C15—H15A	110.3
C5—C6—H6	119.8	O5—C15—H15B	110.3
C1—C6—H6	119.8	C16—C15—H15B	110.3
O1—C7—O2	122.9 (2)	H15A—C15—H15B	108.5
O1—C7—C1	125.5 (2)	C15—C16—C17	110.8 (2)
O2—C7—C1	111.61 (19)	C15—C16—H16A	109.5
C7—O2—C8	118.23 (18)	C17—C16—H16A	109.5
C9—C8—C13	122.2 (2)	C15—C16—H16B	109.5
C9—C8—O2	116.1 (2)	C17—C16—H16B	109.5
C13—C8—O2	121.7 (2)	H16A—C16—H16B	108.1
C8—C9—C10	118.8 (2)	C16—C17—H17A	109.5
C8—C9—H9	120.6	C16—C17—H17B	109.5
C10—C9—H9	120.6	H17A—C17—H17B	109.5
C11—C10—C9	120.2 (2)	C16—C17—H17C	109.5
C11—C10—H10	119.9	H17A—C17—H17C	109.5
C9—C10—H10	119.9	H17B—C17—H17C	109.5
C10—C11—C12	120.0 (2)		
C6—C1—C2—C3	0.2 (4)	C13—C8—C9—C10	1.5 (4)
C7—C1—C2—C3	179.7 (2)	O2—C8—C9—C10	178.5 (2)
C1—C2—C3—C4	0.0 (4)	C8—C9—C10—C11	-1.1 (3)
C2—C3—C4—O5	-179.5 (2)	C9—C10—C11—C12	0.2 (3)
C2—C3—C4—C5	-0.3 (4)	C9—C10—C11—C14	-179.8 (2)

O5—C4—C5—C6	179.7 (2)	C10—C11—C12—C13	0.3 (3)
C3—C4—C5—C6	0.3 (4)	C14—C11—C12—C13	-179.7 (2)
C4—C5—C6—C1	-0.1 (4)	C9—C8—C13—C12	-1.1 (4)
C2—C1—C6—C5	-0.1 (4)	O2—C8—C13—C12	-177.8 (2)
C7—C1—C6—C5	-179.7 (2)	C11—C12—C13—C8	0.2 (4)
C2—C1—C7—O1	-176.3 (2)	C10—C11—C14—O4	175.9 (2)
C6—C1—C7—O1	3.3 (4)	C12—C11—C14—O4	-4.1 (3)
C2—C1—C7—O2	3.8 (3)	C10—C11—C14—O3	-3.7 (3)
C6—C1—C7—O2	-176.6 (2)	C12—C11—C14—O3	176.3 (2)
O1—C7—O2—C8	4.9 (3)	C3—C4—O5—C15	-0.4 (4)
C1—C7—O2—C8	-175.2 (2)	C5—C4—O5—C15	-179.7 (2)
C7—O2—C8—C9	122.6 (2)	C4—O5—C15—C16	-177.7 (2)
C7—O2—C8—C13	-60.5 (3)	O5—C15—C16—C17	-175.9 (2)

Hydrogen-bond geometry (Å, °)

<i>D</i> —H \cdots <i>A</i>	<i>D</i> —H	H \cdots <i>A</i>	<i>D</i> \cdots <i>A</i>	<i>D</i> —H \cdots <i>A</i>
O3—H3O \cdots O4 ⁱ	0.84	1.77	2.606 (3)	172

Symmetry code: (i) $-x, -y+1, -z$.